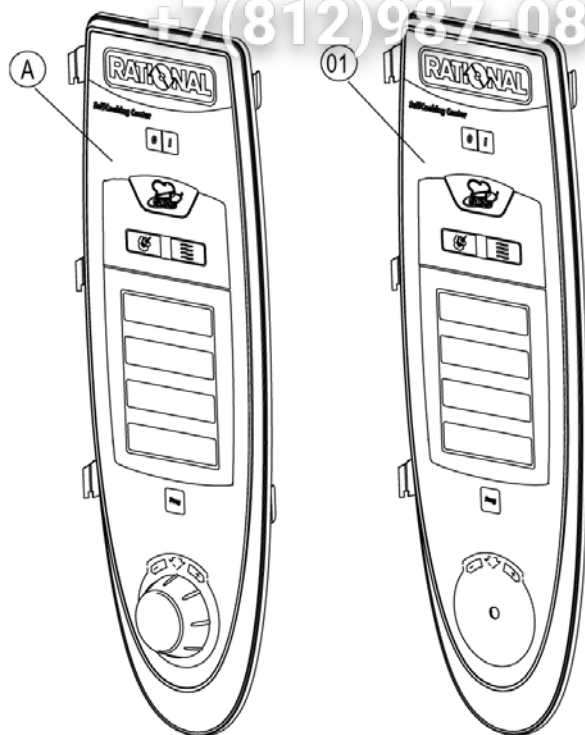
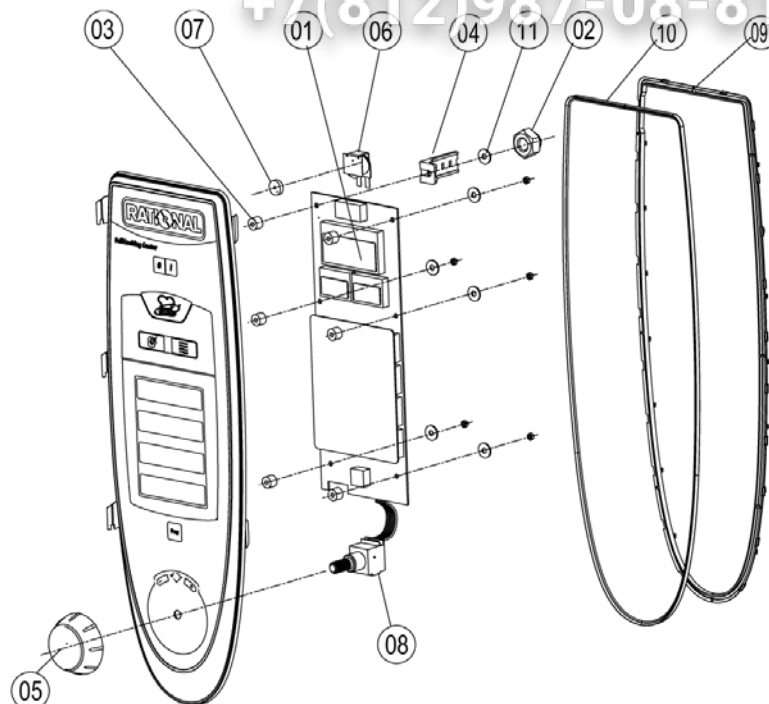


| Item no. | Part no | Reference | Description |
|----------|---------|-----------|-----------------------------|
| 1 | | ►1 | Control panel |
| 2 | | ►2 | Electrical installation |
| 3 | | ►3 | Clima Plus |
| 4 | | ►4 | Steam generator, Bypass |
| 5 | | ►5 | Hot air heating |
| 6 | | ►6 | Motor and fan wheel |
| 7 | | ►7 | Interior cabinet |
| 8 | | ►8 | Door |
| 9 | | ►9 | Water supply, quenching box |
| 10 | | ►10 | Hand shower |
| 11 | | ►11 | CleanJet |
| 12 | | ►12 | Gas parts |
| 13 | | ►13 | Exterior cabinet |
| 14 | | ►14 | Miscellaneous |
| 15 | | ►15 | Voltage depending parts |

| | | |
|------|---|----|
| 1 | Control panel | 3 |
| 1.A | Control panel..... | 4 |
| 2 | Electrical installation | 5 |
| 2.A | - EM SCC 061/G 1NAC230V50-60 1/04 | 6 |
| 3 | Clima Plus..... | 8 |
| 3.A | Hose set f. humidity control | 9 |
| 4 | Steam generator, Bypass | 10 |
| 4.A | Pump connection | 12 |
| 4.B | Venting valve for steam generation..... | 13 |
| 5 | Hot air heating | 14 |
| 5.A | Burner hot air | 15 |
| 6 | Motor and fan wheel | 16 |
| 7 | Interior cabinet | 17 |
| 7.A | Interior cabinet welded..... | 18 |
| 7.B | Gasket frame w. glass a. gaskets | 19 |
| 7.C | Air baffle..... | 20 |
| 8 | Door | 21 |
| 8.A | Door | 22 |
| 9 | Water supply, quenching box..... | 23 |
| 10 | Hand shower..... | 24 |
| 11 | CleanJet..... | 25 |
| 12 | Gas parts | 26 |
| 12.A | Gas valve cpl. ND 055 RG130 | 27 |
| 12.B | Gas valve cpl. WND 055 RG130..... | 28 |
| 13 | Exterior cabinet..... | 29 |
| 13.A | - P-Außenkasten CPC 061/G 01/04 | 30 |
| 14 | Miscellaneous | 32 |
| 15 | Voltage depending parts..... | 33 |

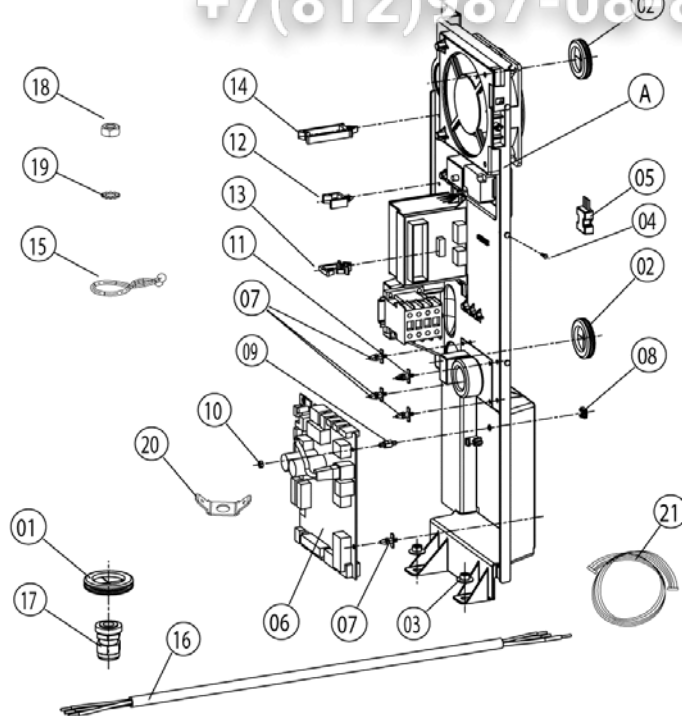


| Item no. | Part no | Reference | Description |
|----------|-----------|-----------|-----------------------------------|
| A | 16.00.676 | ▶1.A | Control panel |
| 1 | 87.00.002 | | Control panel insert with overlay |



| Item no. | Part no | Reference | Description |
|----------|-----------|-----------|---|
| 1 | 42.00.002 | | Control pcb |
| 2 | 1104.0121 | | Hex nut M4 self locking |
| 3 | 2039.0326 | | Spacer for pcb |
| 4 | 2020.0400 | | Fixing device for cable harness |
| 5 | 16.00.232 | | Dial f. pulse generator |
| 6 | 3006.0107 | | Buzzer |
| 7 | 5110.1028 | | Gasket poti hot air, core temperature |
| 8 | 40.00.404 | | Pulse generator |
| 9 | 16.00.385 | | Mounting device f. sealing lip panel insert |
| 10 | 16.00.386 | | Sealing lip f. panel insert |
| 11 | 1306.0218 | | Washer A4,3 |

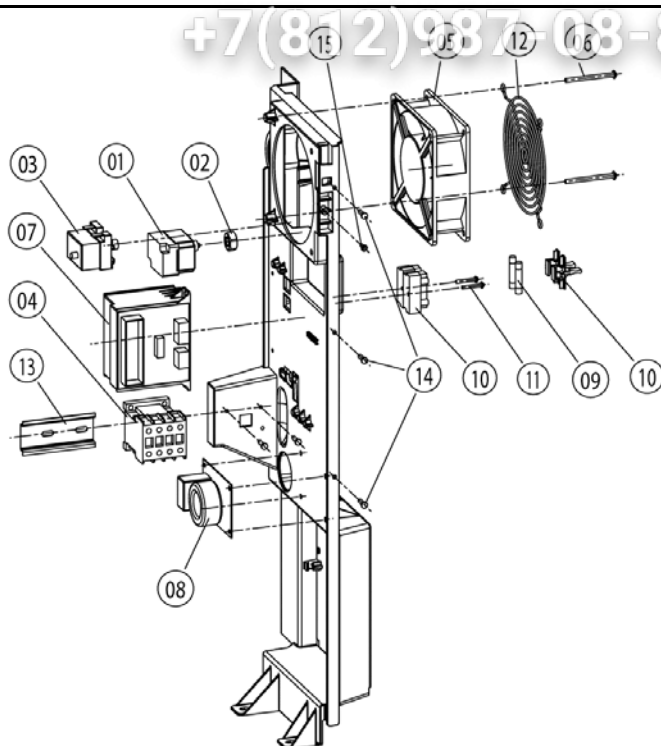
+7(812)987-0881



| Item no. | Part no | Reference | Description |
|----------|------------|-----------|--|
| A | _40.00.386 | ►2.A | - EM SCC 061/G 1NAC230V50-60 1/04 |
| 1 | 4007.0620 | | Membrane DGC 29 |
| 2 | 4007.0621 | | Membrane DGC 36 |
| 3 | 1106.0803 | | Hex combination nut M6 galv |
| 4 | 10.00.239 | | EJOT PT-Screw Torx 4x10 |
| 5 | 42.00.007 | | External memory |
| 6 | 40.00.049 | | Relay-I/O pcb |
| 7 | 40.00.417 | | Fixing clip f. pcb |
| 8 | 1104.0801 | | Cage nut M4 |
| 9 | 10.00.243 | | Spacer M4x8 |
| 10 | 1104.0120 | | Hex nut M4 |
| 11 | 40.01.579 | | - Platinenhalteclip 61-202 m. Nase 01/04 |
| 12 | 10.00.112 | | Cable clip short |
| 13 | 10.00.421 | | Cable clip |
| 14 | 10.00.111 | | Cable clip long |
| 15 | 10.00.471 | | Cable clip d10-12mm |
| 16 | 40.01.596 | | Power supply cable 3x2,5mm ² 3m |
| 17 | 40.00.320 | | Cable connection M20x1.5 |
| 18 | 1106.0160 | | Hex nut M6 |
| 19 | 1206.0120 | | Tooth lock washer A6,4 |
| 20 | 4002.0110 | | Cable connector, junction |
| 21 | 40.00.471 | | Bus cable 0.8m |
| 21 | 40.01.091 | | Bus cable 0.4m |
| -- | 42.00.029 | | - Memory-Stick SCC 01/04 |

Attention! Individual parts shown might not be used in this component group!

► 15* Voltage depending parts shown in chapter 15



| Item no. | Part no | Reference | Description |
|----------|-----------|-----------|---|
| 1 | 3014.0328 | | Dry up protector 275°F/135°C |
| 2 | 3014.0302 | | Hex nut M10 for dry-up protector |
| 3 | 40.01.482 | | - Sicherheitstemperaturbegr.365°61/G 1/04 |
| 4 | 3014.0327 | | Hex nut M10x1,0 |
| 5 | 40.00.451 | | Contactor MC1A 310 AH6 |
| 6 | 3101.1008 | | Cooling fan |
| 7 | 10.00.238 | | Screw Torx 4x50 |
| 8 | 40.00.277 | | Control transformer |
| 9 | 40.01.483 | | Electronic noise filter |
| 10 | 40.00.230 | | Cable gas valve |
| 11 | 4001.0224 | | Fuse 6.35x32mm |
| 12 | 4001.1295 | | Fuse holder e 1003Si/1DS |
| 13 | 10.00.240 | | Screw Torx 3x20 |
| 14 | 2005.0106 | | Protective grid for cooling fan |
| 15 | 40.00.519 | | Installation rail for Contactor 75mm |
| 16 | 10.00.239 | | EJOT PT-Screw Torx 4x10 |
| 17 | 4001.1203 | | End plate for mounting rail |
| 18 | 10.00.111 | | Cable clip long |
| 19 | 40.01.484 | | Cable burner blower |
| 19 | 40.00.209 | | Cable buzzer |
| 19 | 40.00.202 | | Cable CDS sensor |
| 19 | 40.00.213 | | Cable control transformer sec. |
| 19 | 40.00.207 | | Cable differential pressure switch |
| 19 | 40.00.208 | | Cable humidity control |
| 19 | 40.00.205 | | Cable level electrode |
| 19 | 40.00.247 | | Cable SC pump |

Attention! Individual parts shown might not be used in this component group!

► 15* Voltage depending parts shown in chapter 15



SCC 61 G

Зип Общепит

Valid as of G61SE0404 up to G61SE....

Gas unit

▶ 2.A - EM SCC 061/G 1 NAC 230V 50-60 1/04

2

2 Electrical installation

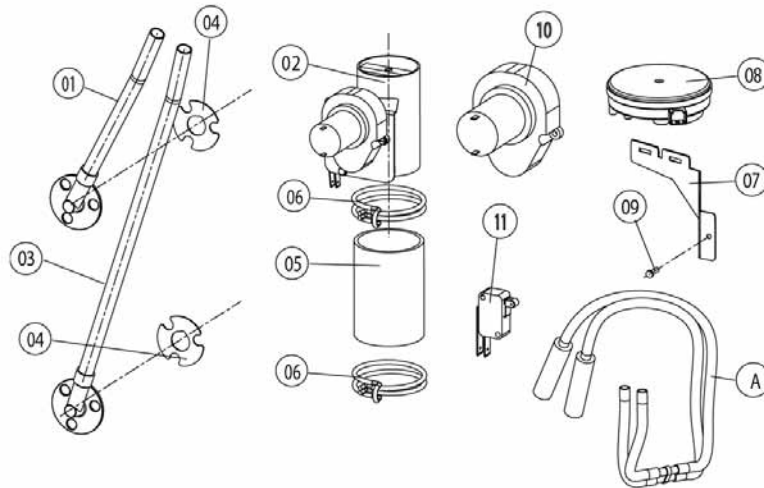
Voltage 1 NAC 230V 50-60Hz

| Item no. | Part no | Reference | Description |
|----------|-----------|-----------|--|
| 19 | 40.00.203 | | Cable solenoid valve |
| 19 | 40.00.231 | | Cable transformer for cooling fan sec. |

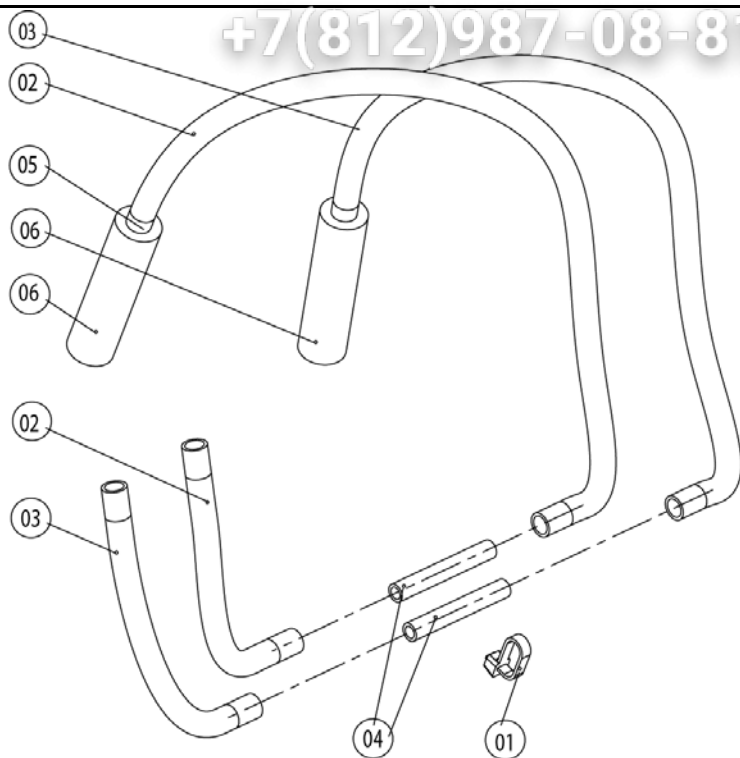
+7(812)987-08-81

Attention! Individual parts shown might not be used in this component group!

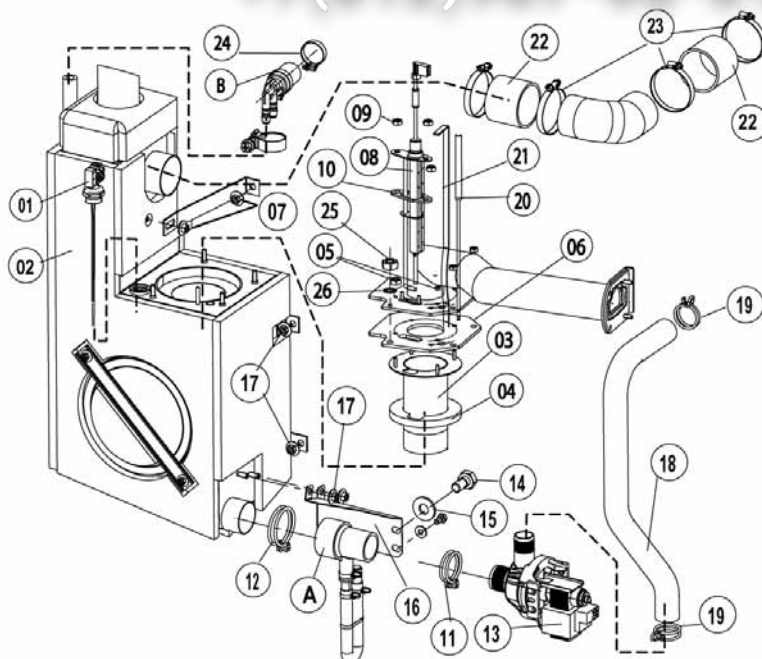
▶ 15* Voltage depending parts shown in chapter 15



| Item no. | Part no | Reference | Description |
|----------|-----------|-----------|--------------------------------------|
| A | 22.00.234 | ►3.A | Hose set f. humidity control |
| 1 | 22.00.199 | | Inner humidity meas. Piece |
| 2 | 22.00.318 | | Humidity control cpl. with motor |
| 3 | 22.00.200 | | Outer humidity meas. Piece |
| 4 | 22.00.198 | | Gasket f. hum. meas. Pipe |
| 5 | 22.00.174 | | Hose d50x83 |
| 6 | 2066.0531 | | Hose clamp ø56 |
| 7 | 22.00.326 | | Mounting device f. pressure sensor |
| 8 | 3017.1011 | | Pressure sensor for humidity control |
| 9 | 10.00.239 | | EJOT PT-Screw Torx 4x10 |
| 10 | 3101.1010 | | Humidity control motor |
| 11 | 3016.0102 | | Micro switch |



| Item no. | Part no | Reference | Description |
|----------|-----------|-----------|--|
| 1 | 4005.0101 | | Tie rap 145 mm |
| 2 | 2110.1020 | | Silicon hose $\varnothing 5 \times 1.5$ blue |
| 3 | 2110.1019 | | Silicone hose $\varnothing 5 \times 1,5$ "red" |
| 4 | 1900.0203 | | Ceramic tube 8x5x60mm for |
| 5 | 2112.1338 | | Silicone hose $\varnothing 8 \times 2 \times 20$ |
| 6 | 2110.1008 | | Silicon hose $\varnothing 10 \times 2$ mm |

+7(812)987-08-81


| Item no. | Part no | Reference | Description |
|----------|------------|-----------|---|
| A | _8354.1320 | ►4.A | Pump connection |
| B | 8354.1304 | ►4.B | Venting valve for steam generation |
| 1 | 44.00.253 | | Filling level electrode 85mm |
| 2 | 44.00.182 | | Steam generator insolated |
| 3 | 72.00.003 | | Burner steam gen. |
| 4 | 72.00.048 | | Insulation f. burner steam gen. |
| 5 | 1104.0122 | | Hex combination nut M4 galv |
| 6 | 72.00.020 | | Gasket f. burner carrier |
| 7 | 1105.0121 | | Hex combination nut M5 galv |
| 8 | 44.00.251 | | Ignition electrode steam generator |
| 9 | 1104.0120 | | Hex nut M4 |
| 10 | 44.00.250 | | Gasket f. ignition electrode |
| 11 | 2066.0519 | | Hose clamp 35,6mm |
| 12 | 2066.0526 | | Hose clamp \varnothing 46mm |
| 13 | 44.00.207 | | Emptying pump |
| 14 | 1006.0762 | | Hex screw M6x10 |
| 15 | 1306.0222 | | Washer A6.4x15x1.5 |
| 16 | 44.00.226 | | Fixing device f. pump steam generator |
| 17 | 1106.0803 | | Hex combination nut M6 galv |
| 18 | 44.00.234 | | Drain hose steam generator |
| 19 | 2066.0518 | | Hose clamp 30mm |
| 20 | 40.01.094 | | Thermocouple steam gen. (B5) |
| 21 | 44.00.516 | | Fixing plate steam generator thermostat |
| 22 | 2112.1006 | | Steam hose 50x7mm |
| 23 | 2066.0504 | | Hose clamp 40-60mm |
| 24 | 2066.0506 | | Hose clamp 20-32mm |

Attention! Individual parts shown might not be used in this component group!

► 15* Voltage depending parts shown in chapter 15



SCC 61 G

Зип Общепит

Valid as of G61SE0404 up to G61SE....

Gas unit

► 4 Steam generator, Bypass

4

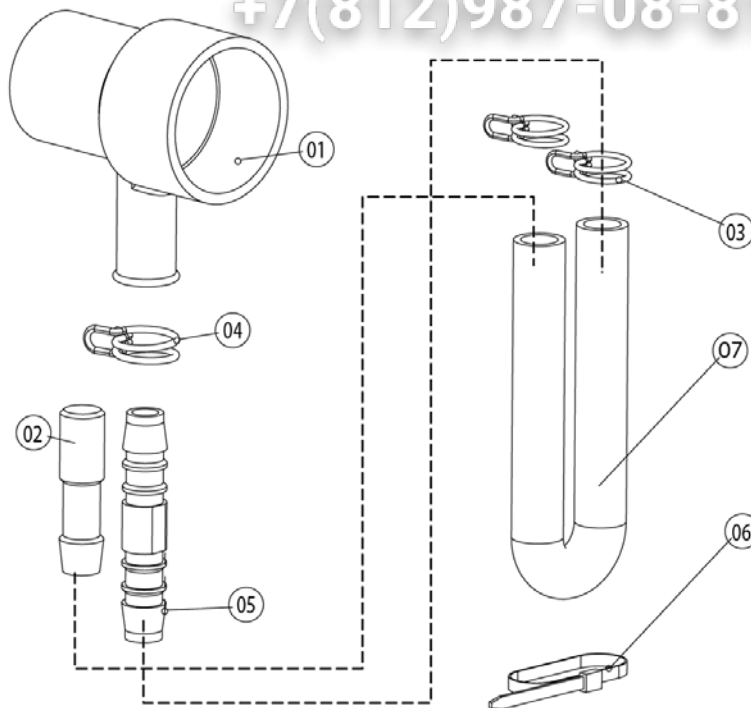
4 Steam generator, Bypass Voltage 1 NAC 230V 50-60Hz

| Item no. | Part no | Reference | Description |
|----------|-----------|-----------|------------------------|
| 25 | 1105.0120 | | Hex nut M5 |
| 26 | 1205.0120 | | Tooth lock washer A5,3 |

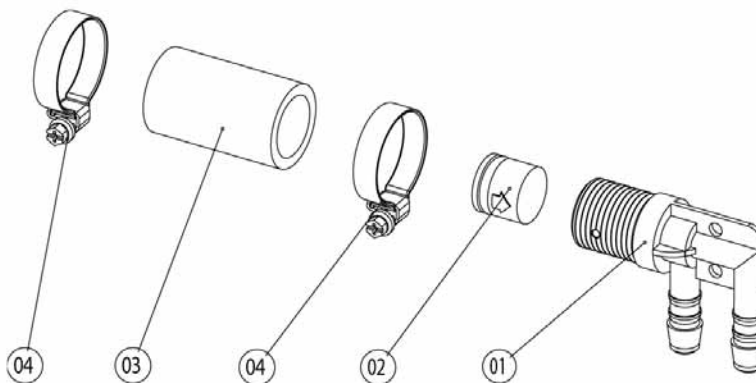
Attention! Individual parts shown might not be used in this component group!

► 15* Voltage depending parts shown in chapter 15

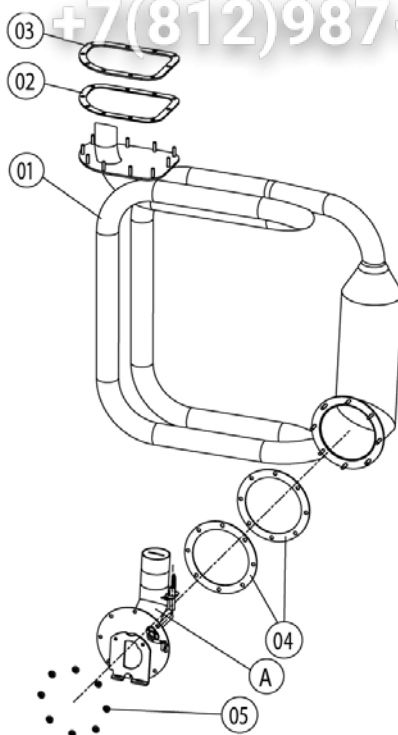
+7(812)987-08-81



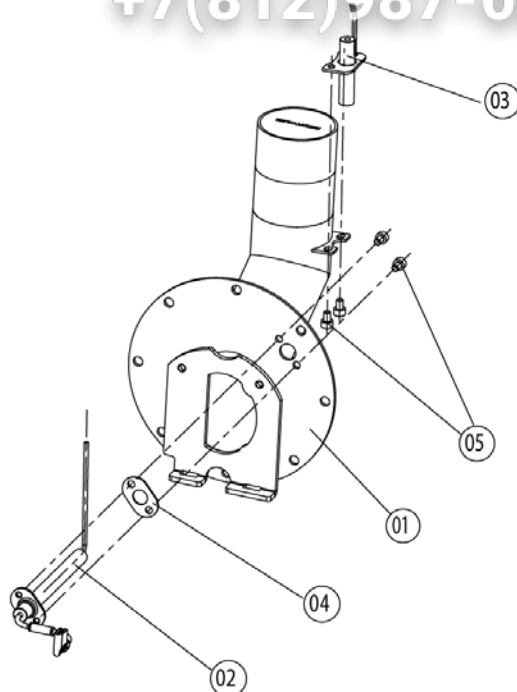
| Item no. | Part no | Reference | Description |
|----------|-----------|-----------|------------------------------|
| 1 | 2118.1000 | | Pump connection spout |
| 2 | 2120.1259 | | Stop plug 10mm |
| 3 | 2066.0527 | | Hose clamp ø14mm |
| 4 | 2066.0530 | | Hose clamp ø16.4mm |
| 5 | 2062.0331 | | Junction pressure hose GS 10 |
| 6 | 4005.0101 | | Tie rap 145 mm |
| 7 | 2110.1008 | | Silicon hose ø10x2mm |



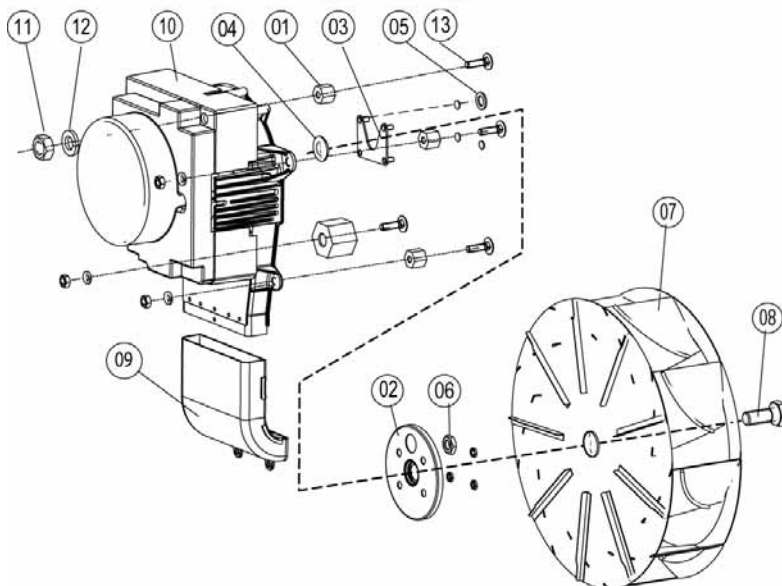
| Item no. | Part no | Reference | Description |
|----------|-----------|-----------|--|
| 1 | 2062.0332 | | Receptacle for ventilation valve SG |
| 2 | 2069.0108 | | Ventilation valve |
| 3 | 2112.1310 | | Form hose for ventilation of steam generator |
| 4 | 2066.0506 | | Hose clamp 20-32mm |



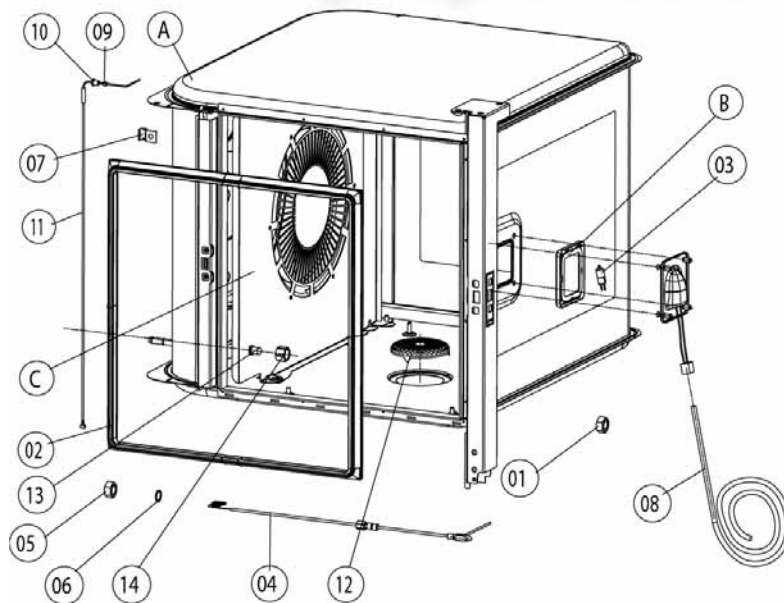
| Item no. | Part no | Reference | Description |
|----------|-----------|-----------|--|
| A | 74.00.276 | ►5.A | Burner hot air |
| 1 | 74.00.134 | | Hot air heat exchanger |
| 2 | 74.00.234 | | Gasket hot air heat exchanger/interior cabinet |
| 3 | 74.00.313 | | Mating flange heat exchanger |
| 4 | 74.00.296 | | Gasket f. heat exchanger below |
| 5 | 1105.0122 | | Hex combination nut M5 V2A |

+7(812)987-08-81


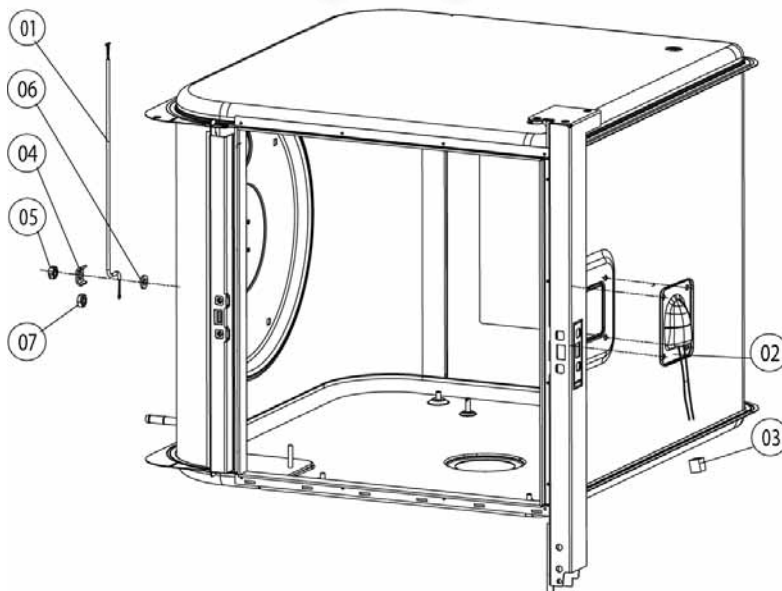
| Item no. | Part no | Reference | Description |
|----------|-----------|-----------|-------------------------------|
| 1 | 74.00.340 | | Burner welded hot air |
| 2 | 74.00.230 | | Ignitionelectrode1 f. hot air |
| 3 | 74.00.235 | | Ignitionelectrode2 f. hot air |
| 4 | 74.00.290 | | Gasket electrode hot air |
| 5 | 10.00.060 | | Pan head screw Torx M4x6 |



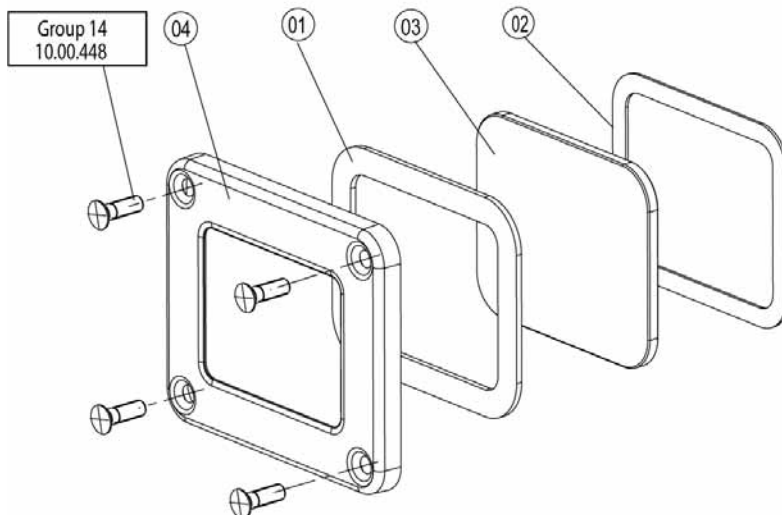
| Item no. | Part no | Reference | Description |
|----------|-----------|-----------|---------------------------------------|
| 1 | 2120.1306 | | Spacer SW19x17 |
| 2 | 22.00.123 | | Flange f. motor shaft gasket |
| 3 | 22.00.120 | | Mounting support f. gasket flange |
| 4 | 22.00.083 | | Motor shaft gasket |
| 5 | 1315.0101 | | Copper washer 6x10 |
| 6 | 1106.0220 | | Hex nut M6 flat |
| 7 | 22.00.188 | | Fan wheel d340x110 |
| 8 | 1008.0763 | | Hex screw M8x20 |
| 9 | 40.00.310 | | Exhaust pipe below |
| 10 | 40.00.274 | | Fan motor |
| 11 | 1108.0260 | | Hex nut M8 |
| 12 | 1208.0260 | | Spring washer B8 |
| 13 | 1008.1005 | | Square necked mushroom head bolt 8x40 |



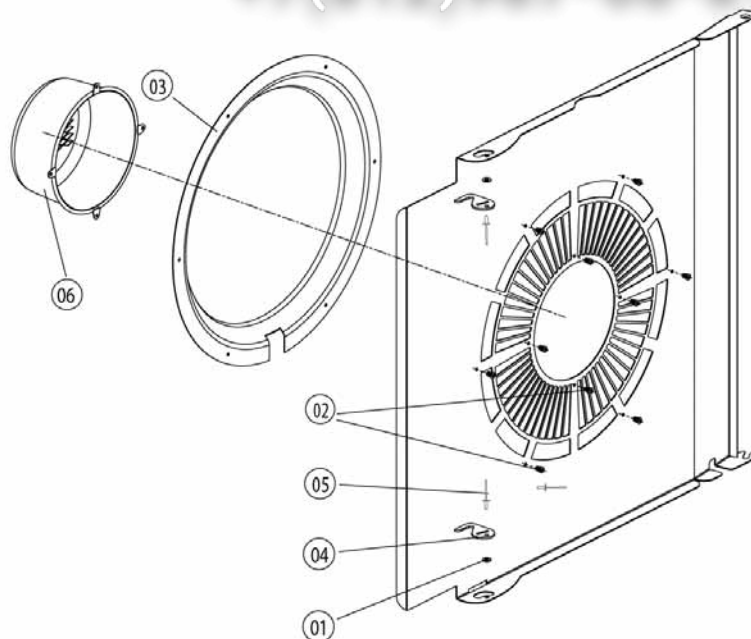
| Item no. | Part no | Reference | Description |
|----------|------------|-----------|---------------------------------------|
| A | _20.00.143 | ►7.A | Interior cabinet welded |
| B | 40.00.091 | ►7.B | Gasket frame w. glass a. gaskets |
| C | 22.00.379 | ►7.C | Air baffle |
| 1 | 10.00.070 | | Hex nut M6 |
| 2 | 20.00.394 | | Door gasket |
| 3 | 3024.0201 | | Halogen bulb for interior cabinet |
| 4 | 40.00.293 | | Meat probe sensor |
| 5 | 10.00.422 | | Hex nut M16 |
| 6 | 1315.0104 | | Copper washer 16x20x1,5 |
| 7 | 2760.1089 | | Guide bush for core temperatur sensor |
| 8 | 40.00.211 | | Wiring interior light |
| 9 | 3014.0162 | | Sealing cone for thermocouple |
| 10 | 3014.0163 | | Gasket sleeve with nipple |
| 11 | 40.01.097 | | Thermocouple interior cabinet (B1) |
| 12 | 2005.0308 | | Outlet sieve |
| 13 | 50.00.395 | | Nozzle f. moistening |
| 14 | 50.00.394 | | Union nut M12x12 |



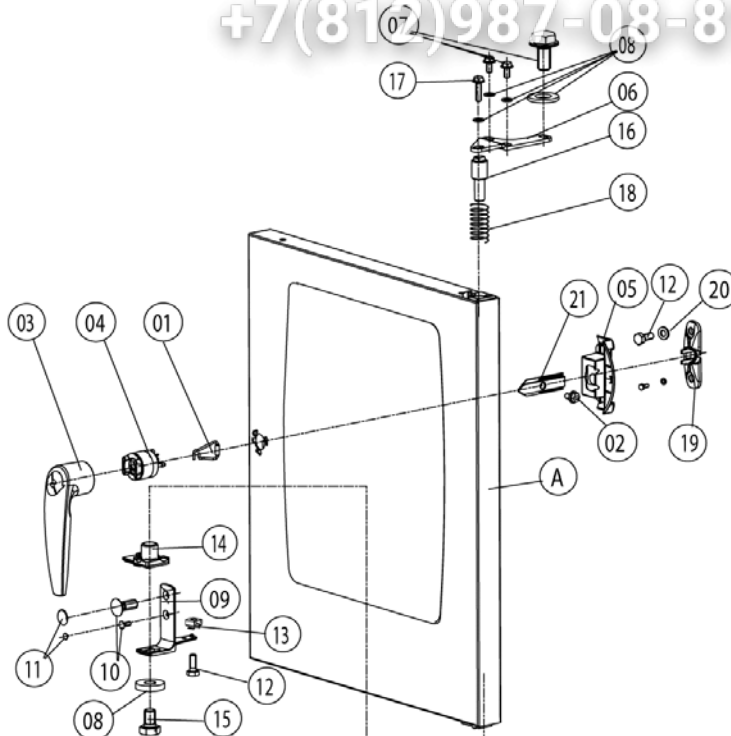
| Item no. | Part no | Reference | Description |
|----------|-----------|-----------|--|
| 1 | 40.00.290 | | Thermocouple humidity |
| 2 | 40.00.098 | | Reflector f. interior light |
| 3 | 4001.1248 | | Porcelain connector 2-pin interior light |
| 4 | 1330.0100 | | Clamp strap f. sensor |
| 5 | 1106.0224 | | Hex nut M6 self locking |
| 6 | 1306.0120 | | Washer A6,4 |
| 7 | 10.00.100 | | Hex nut M4, self-locking |



| Item no. | Part no | Reference | Description |
|----------|-----------|-----------|--------------------------------|
| 1 | 40.00.093 | | Outer gasket f. interior light |
| 2 | 40.00.094 | | Inner gasket f. interior light |
| 3 | 40.00.095 | | Glass pane f. interior light |
| 4 | 40.00.096 | | Gasket frame f. interior light |

+7(812)987-08-81


| Item no. | Part no | Reference | Description |
|----------|-----------|-----------|--------------------------------|
| 1 | 1304.0160 | | Washer A4,3 |
| 2 | 1604.0167 | | Rivet 4x10 |
| 3 | 22.00.332 | | Air sucking ring f. air baffle |
| 4 | 2760.1370 | | Latch hook for air baffle |
| 5 | 1603.0168 | | Rivet 3,2x8 A4 |
| 6 | 22.00.361 | | Deep-draw f. air baffle |

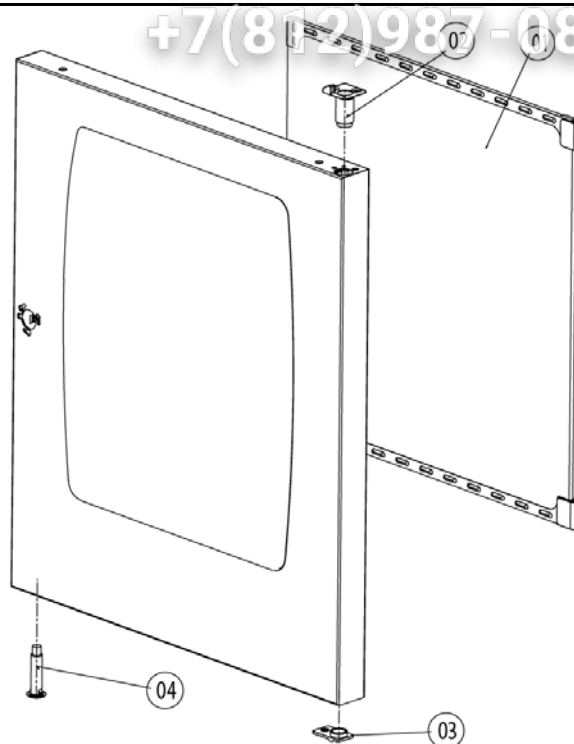
+7(812)987-08-81


| Item no. | Part no | Reference | Description |
|----------|-----------|-----------|-------------------------------|
| A | 24.00.088 | ►8.A | Door |
| 1 | 24.00.506 | | Spring clip f. door lock |
| 2 | 1005.2000 | | Interlocking tooth screw M5x8 |
| 3 | 24.00.152 | | Door handle |
| 4 | 24.00.176 | | Door lock |
| 5 | 24.00.504 | | Lock cover |
| 6 | 24.00.133 | | Door mounting support top |
| 7 | 1008.0768 | | Ornamental screw M8x16 |
| 8 | 1308.0160 | | Washer A8,4 |
| 9 | 24.00.223 | | Door mounting support bottom |
| 10 | 1006.1962 | | Countersunk screw Torx M6x16 |
| 11 | 10.00.090 | | Cap f. Torx T30 |
| 12 | 1006.0760 | | Hex screw M6x16 |
| 13 | 1106.0802 | | Cage nut M6 |
| 14 | 24.00.137 | | Door bolt |
| 15 | 10.00.099 | | Hex screw M8x12 |
| 16 | 24.00.048 | | Door bolt |
| 17 | 1008.0769 | | Ornamental screw M8x30 |
| 18 | 2001.0109 | | Compression spring |
| 19 | 24.00.141 | | Holding bracket f. door catch |
| 20 | 1306.0120 | | Washer A6,4 |
| 21 | 24.00.142 | | Door catch |

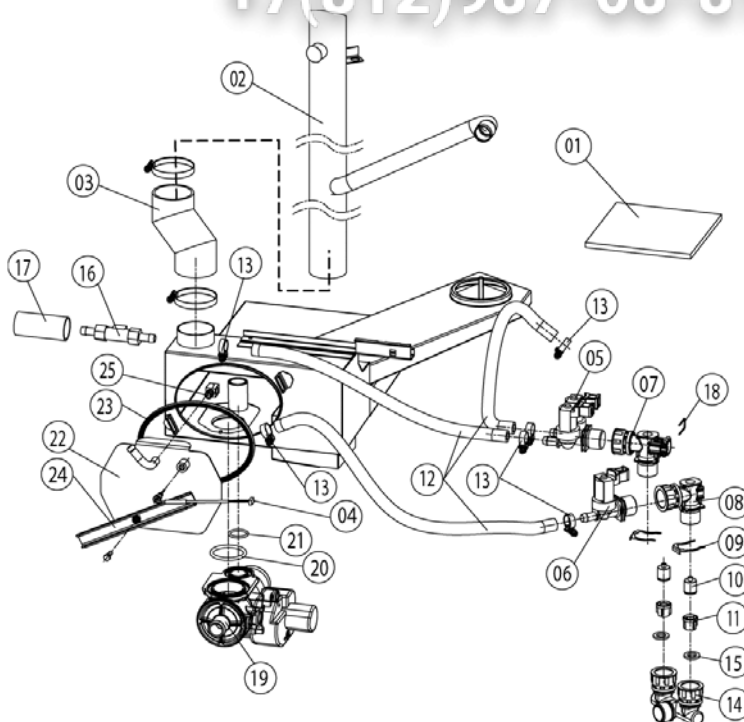
Attention! Individual parts shown might not be used in this component group!

► 15* Voltage depending parts shown in chapter 15

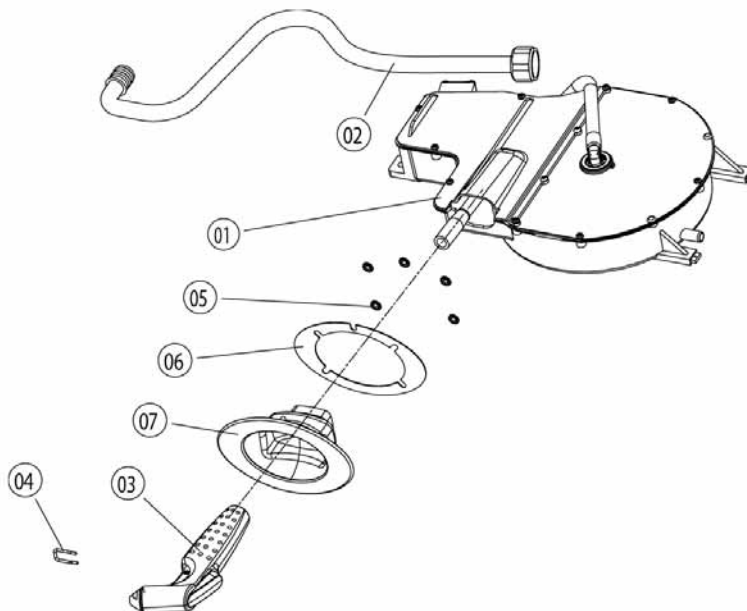
+7(812)987-08-81



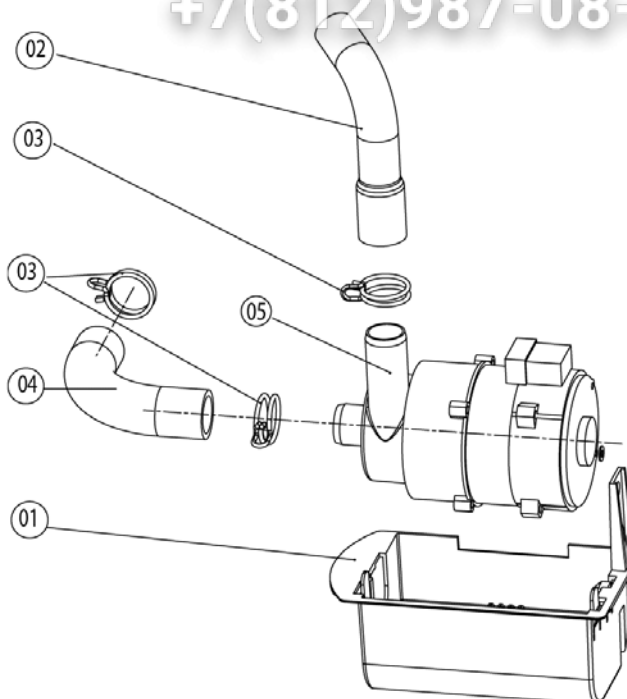
| Item no. | Part no | Reference | Description |
|----------|-----------|-----------|--------------------------|
| 1 | 24.00.163 | | Inner door pane |
| 2 | 24.00.147 | | Sleeve for door bolt top |
| 3 | 24.00.146 | | Door setting bolt |
| 4 | 24.00.502 | | Fixing device f. magnet |



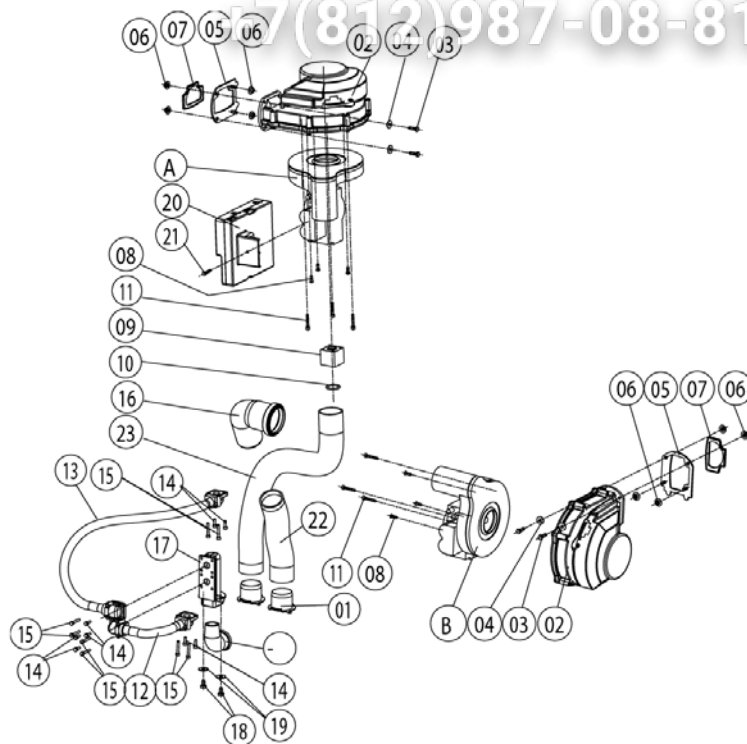
| Item no. | Part no | Reference | Description |
|----------|-----------|-----------|--|
| 1 | 5003.0300 | | Insulation, melamin resin foam |
| 2 | 54.00.223 | | Exhaust pipe |
| 3 | 54.00.086 | | Rubber form piece venting pipe |
| 4 | 40.00.287 | | Thermocouple quenching |
| 5 | 50.00.138 | | Double solenoid valve |
| 6 | 50.00.139 | | Single solenoid valve |
| 7 | 50.00.070 | | Water distribution hor roll guide con. |
| 8 | 50.00.071 | | Water distribution hor. w/o roll guide con. |
| 9 | 50.00.086 | | Locking plate f. water distribution |
| 10 | 50.00.078 | | Non return valve DW16/DN12 |
| 11 | 1900.0202 | | Water filter |
| 12 | 2067.0050 | | Pressure hose d10mm |
| 13 | 2066.0205 | | Hose clamp 8-16x9 mm SW 7mm |
| 14 | 8664.1301 | | T-fitting water connection |
| 15 | 5110.1024 | | Gasket for G3/4" threaded joint |
| 16 | 44.00.211 | | Water volume sensor |
| 17 | 2112.1346 | | Protecting hose $\varnothing 28 \times 2 \times 70$ mm |
| 18 | 50.00.085 | | Plug-in spring f. hand shower roll guide |
| 19 | 54.00.357 | | Ball valve drain SCC cpl. |
| 20 | 10.00.511 | | O-Ring f. Kugelhahn 46x3.5 |
| 21 | 10.00.512 | | O-Ring f. Kugelhahn 26x3.5 |
| 22 | 54.00.228 | | Inspection lid f. quenching chamber |
| 23 | 5012.0566 | | Gasket quenching chamber O-ring |
| 24 | 54.00.225 | | Clamping bar |
| 25 | 2016.0935 | | Quenching nozzle 2.3 l/min. |

+7(812)987-08-81


| Item no. | Part no | Reference | Description |
|----------|-----------|-----------|---|
| 1 | 50.00.140 | | Hand shower roll guide |
| 2 | 50.00.178 | | Connect. pipe f. hand shower roll guide |
| 3 | 50.00.130 | | Hand shower |
| 4 | 50.00.156 | | Clamp f. hand shower roll guide |
| 5 | 1107.0100 | | Star lock d4 |
| 6 | 50.00.298 | | Tape f. tulip |
| 7 | 50.00.279 | | Tulip for handshower |

+7(812)987-08-81


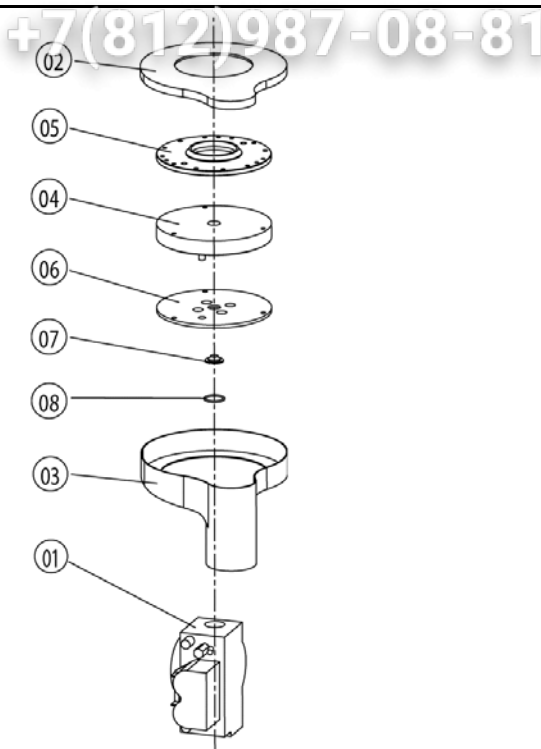
| Item no. | Part no | Reference | Description |
|----------|-----------|-----------|---------------------------|
| 1 | 12.00.319 | | Housing f. Cleaning pump |
| 2 | 56.00.166 | | Pressure hose f. cleaning |
| 3 | 2066.0521 | | Hose clamp 27mm |
| 4 | 56.00.188 | | Suction hose f. cleaning |
| 5 | 56.00.153 | | Pump f. cleaning UP30 |



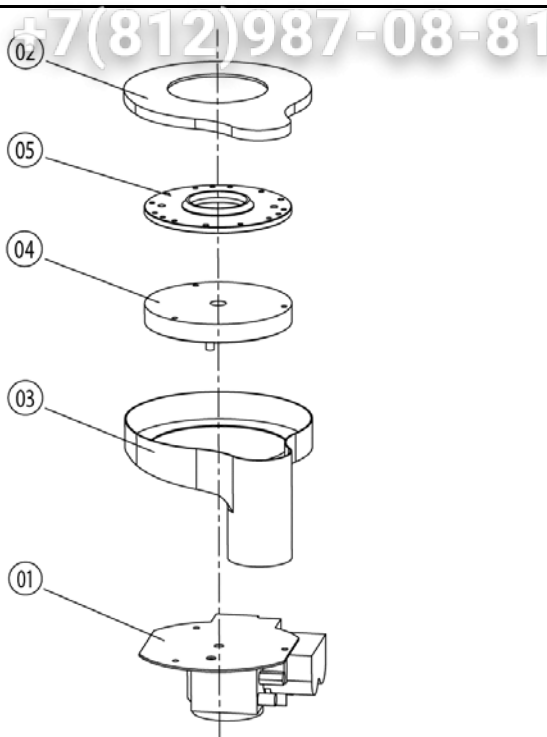
| Item no. | Part no | Reference | Description |
|----------|-----------|-----------|------------------------------------|
| A | 70.00.033 | ►12.A | Gas valve cpl. ND 055 RG130 |
| B | 70.00.029 | ►12.B | Gas valve cpl. WND 055 RG130 |
| 1 | 70.00.221 | | Air hose fixing device 40mm |
| 2 | 70.00.028 | | Blower for burner RG130 |
| 3 | 1008.0750 | | Hex screw M5x16 |
| 4 | 1305.0160 | | Washer A5,3 x 10 mm |
| 5 | 74.00.310 | | Flange f. burner blower RG130 |
| 6 | 1105.0122 | | Hex combination nut M5 V2A |
| 7 | 74.00.301 | | Gasket f. blower burner |
| 8 | 10.00.065 | | Countersunk screw Torx T20 M4x12 |
| 9 | 70.00.069 | | Spacer sleeve f. gas burner blower |
| 10 | 70.00.262 | | O-ring 21.89x2.62 |
| 11 | 10.00.064 | | Pan head screw Torx T20 M4x30 |
| 12 | 70.00.132 | | Corrugated hose 110mm |
| 13 | 70.00.090 | | Corrugated hose 580mm |
| 14 | 10.00.061 | | Pan head screw Torx T20 M4x12 |
| 15 | 10.00.063 | | Pan head screw Torx T20 M4x25 |
| 16 | 70.00.301 | | Combustion air angle pipe hot air |
| 17 | 74.00.308 | | Gas connection manifold 2x3/4" |
| 18 | 1006.0762 | | Hex screw M6x10 |
| 19 | 1306.0222 | | Washer A6.4x15x1.5 |
| 20 | 74.00.221 | | Automatic ignition controller |
| 21 | 10.00.062 | | Pan head screw Torx T20 M4x20 |
| 22 | 70.00.094 | | Air hose D40x200mm |
| 23 | 70.00.093 | | Air hose D40x650mm |

Attention! Individual parts shown might not be used in this component group!

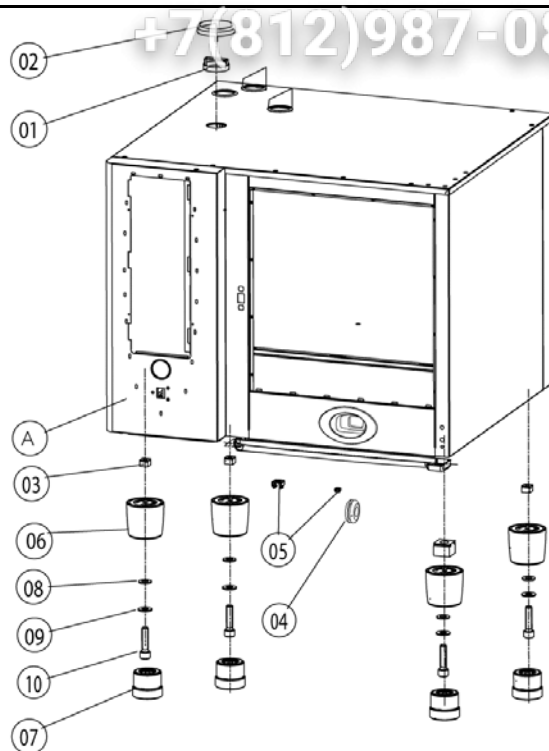
► 15* Voltage depending parts shown in chapter 15



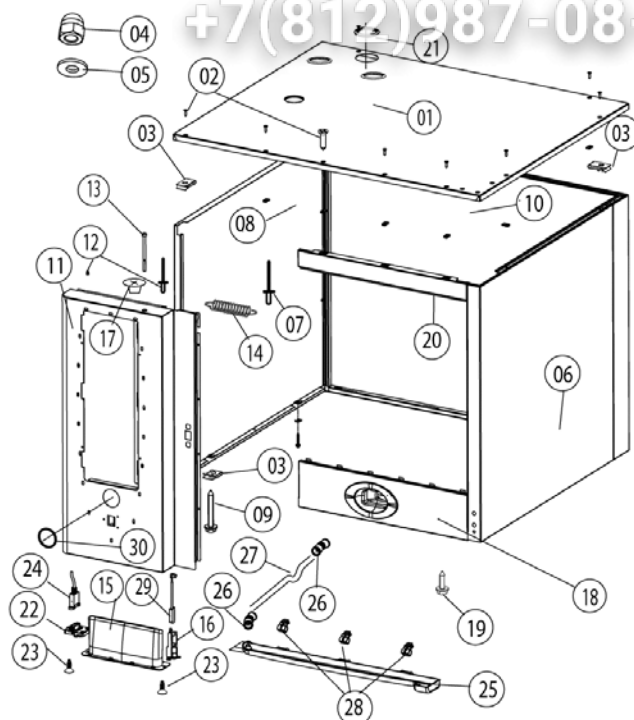
| Item no. | Part no | Reference | Description |
|----------|-----------|-----------|-----------------------------------|
| 1 | 70.00.220 | | Gas valve |
| 2 | 70.00.255 | | Premix chamber cover gas f. RG130 |
| 3 | 70.00.030 | | Premix chamber gas f. RG130 |
| 4 | 70.00.106 | | Premix disc gas |
| 5 | 70.00.256 | | Disc premix chamber-blower RG130 |
| 6 | 70.00.108 | | Disc gas valve-premix chamber |
| 7 | 70.00.260 | | Gas nozzle 7mm |
| 8 | 70.00.261 | | O-ring 17x1.5 |



| Item no. | Part no | Reference | Description |
|----------|-----------|-----------|-----------------------------------|
| 1 | 70.00.031 | | Gas valve |
| 2 | 70.00.255 | | Premix chamber cover gas f. RG130 |
| 3 | 70.00.030 | | Premix chamber gas f. RG130 |
| 4 | 70.00.106 | | Premix disc gas |
| 5 | 70.00.256 | | Disc premix chamber-blower RG130 |



| Item no. | Part no | Reference | Description |
|----------|------------|-----------|---------------------------------|
| A | _16.00.138 | ►13.A | - P-Außenkasten CPC 061/G 01/04 |
| 1 | 8450.1310 | | Spacer ring |
| 2 | 8455.1209 | | Vent cover |
| 3 | 1110.0800 | | Cage nut M10 |
| 4 | 2022.0101 | | Grommet 18 mm |
| 5 | 1106.0802 | | Cage nut M6 |
| 6 | 12.00.205 | | Upper part of pedestal |
| 7 | 12.00.206 | | Lower part of pedestal |
| 8 | 1310.0160 | | Washer A10,5 |
| 9 | 1328.0102 | | Safety washer A10,2 |
| 10 | 10.00.107 | | Allen screw M10x30 |



| Item no. | Part no | Reference | Description |
|----------|-----------|-----------|---------------------------------------|
| 1 | 16.00.273 | | Top cover |
| 2 | 1003.2265 | | Countersunk self tapping screw 4,2x16 |
| 3 | 1104.0820 | | Snap nut 4.2mm |
| 4 | 1105.0260 | | Cap nut M5, high shape |
| 5 | 1305.0160 | | Washer A5,3 x 10 mm |
| 6 | 16.00.135 | | Side panel right |
| 7 | 1603.0166 | | Rivet 3.2x7,9, CNS closed |
| 8 | 16.00.136 | | Side panel left |
| 9 | 10.00.102 | | Hex self tapping screw 4,2x32 |
| 10 | 16.00.187 | | Back panel |
| 11 | 16.00.294 | | Front panel |
| 12 | 1603.0161 | | Rivet 3,2x6 |
| 13 | 10.00.069 | | Slotted pan head screw M6x90 |
| 14 | 2002.0107 | | Tension spring for front panel |
| 15 | 16.00.673 | | Air inlet filter |
| 16 | 16.00.384 | | Bracket for door contact switch |
| 17 | 2039.0331 | | Cap for service door |
| 18 | 16.00.325 | | Crossbar below |
| 19 | 1004.2160 | | Hex self tapping screw 4,2x16 |
| 20 | 16.00.180 | | Crossbar top |
| 21 | 5105.1027 | | Gasket f. exhaust pipe d=54mm |
| 22 | 16.00.329 | | Cover f. USB interface |
| 23 | 10.00.103 | | EJOT PT-screw KA 3.5x10 |
| 24 | 40.00.469 | | Interface cable USB 0.9m |
| 25 | 50.00.286 | | Drip collector |
| 26 | 50.00.303 | | Bushing drip collector |

Attention! Individual parts shown might not be used in this component group!

► 15* Voltage depending parts shown in chapter 15



SCC 61 G

Зип Общепит

Valid as of G61SE0404 up to G61SE....

Gas unit

▶ 13.A - P-Außenkasten GFC 061/G 01/04

13

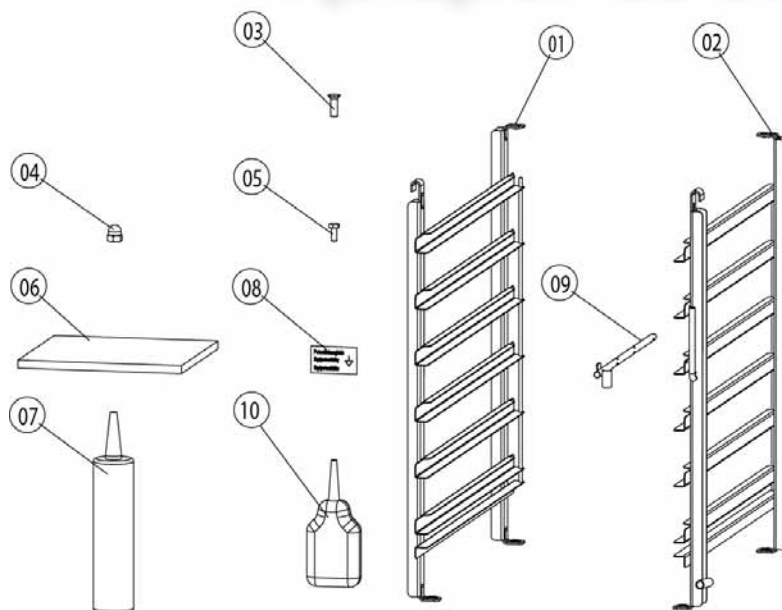
13 Exterior cabinet

Voltage 1 NAC 230V 50-60Hz

| Item no. | Part no | Reference | Description |
|----------|-----------|-----------|-------------------------|
| 27 | 50.00.299 | | Drain, drip collector |
| 28 | 50.00.296 | | Clip f. drip collector |
| 29 | 40.00.335 | | Door switch |
| 30 | 16.00.338 | | Edge protection profile |

Attention! Individual parts shown might not be used in this component group!

▶ 15* Voltage depending parts shown in chapter 15

+7(812)987-08-81


| Item no. | Part no | Reference | Description |
|----------|-----------|-----------|---------------------------------------|
| 1 | 60.61.016 | | Hinging rack left |
| 2 | 60.61.017 | | Hinging rack right |
| 3 | 10.00.448 | | Phillips countersunk-head screw M5x16 |
| 4 | 1106.0360 | | Cap nut M6, high shape |
| 5 | 1004.0666 | | Hex screw M4x10 |
| 6 | 5003.0300 | | Insulation, melamin resin foam |
| 7 | 5006.0500 | | Polyurethan-Glue for insulation 310ml |
| 8 | 2049.0817 | | Sticker, Equipotential bonding |
| 9 | 60.60.574 | | - Halter für KT-Fühler 61-202 01/04 |
| 10 | 5006.0202 | | Loctite IS 495 |



SCC 61 G

Зип Общепит

Valid as of up to

Gas unit

▶ 15 Voltage depending parts

0

0 Voltage depending parts

Voltage 1 NAC 230V 50-60Hz

| Item no. | Part no | Reference | Description |
|----------|---------|-----------|-------------|
|----------|---------|-----------|-------------|

+7(812)987-08-81

Attention! Individual parts shown might not be used in this component group!

▶ 15* Voltage depending parts shown in chapter 15



xxxx
0 xxxx

Зип Общепит

0

Elektrogeräte

► 0 xxxx

0

Gültig von
xxxx

vsezip.ru

bis:
xxxx

Spannung: xxxx

+7(812)987-08-81

Attention! Individual parts shown might not be used in this component group!

► 15* Voltage depending parts shown in chapter 15