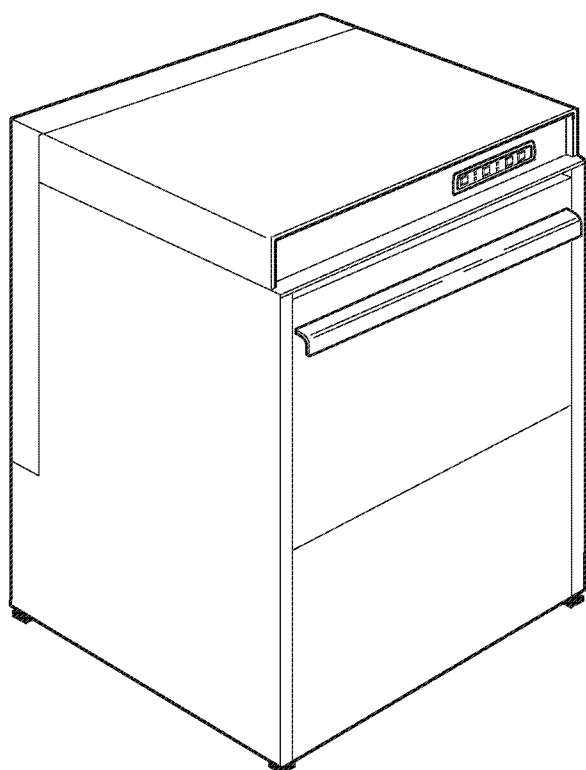


**CATALOGO RICAMBI  
SPARE PARTS  
PIECES DETACHEES  
ERSATZTEILE  
LISTA DE RECAMBIOS**

Зип Общепит

vsezip.ru

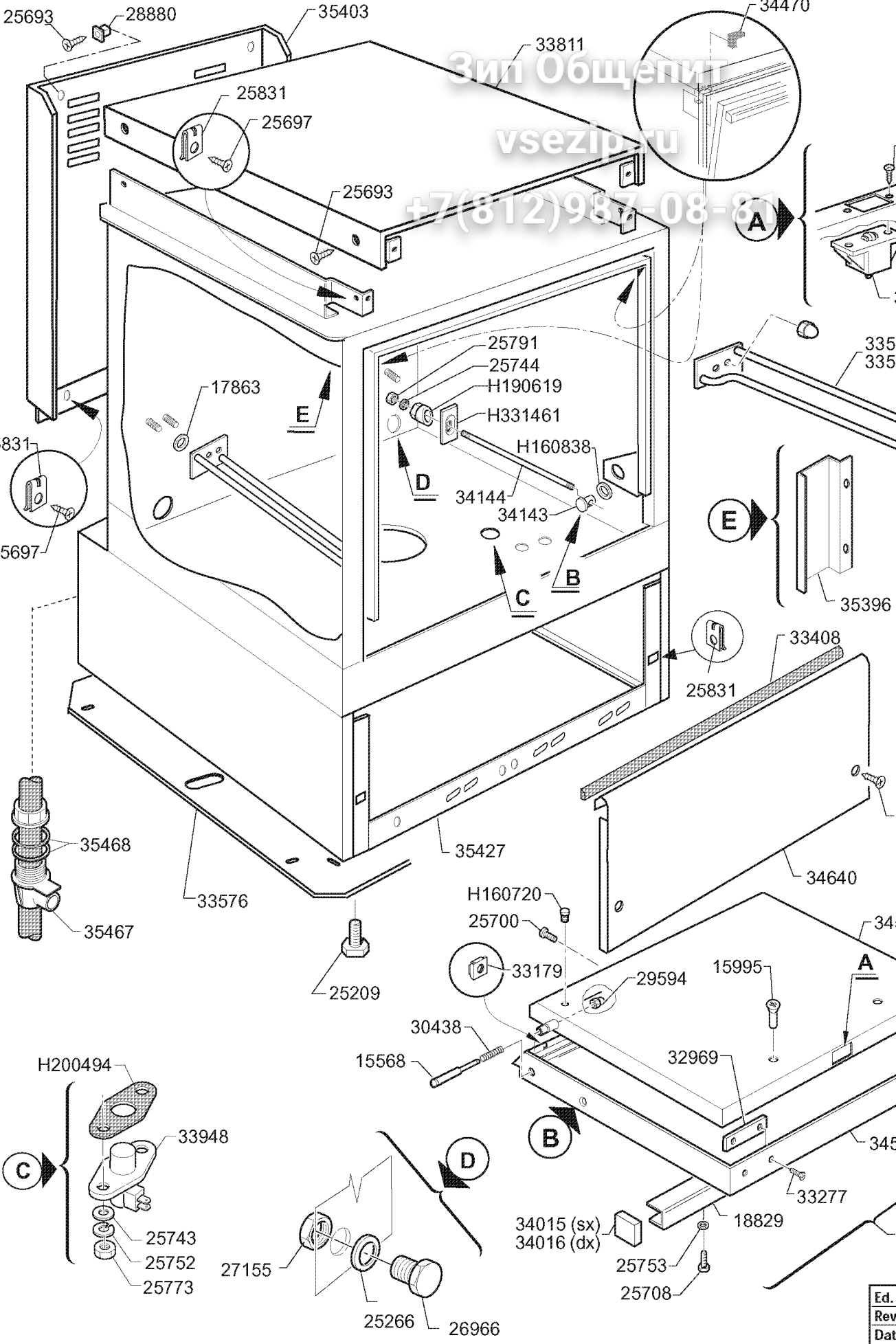
+7(812)987-08-81



**Lavastoviglie  
Lavevaisselle  
Geschirrspüler  
Dishwashers  
Lavavajillas**

**60 BT**

Ed. 12/2001



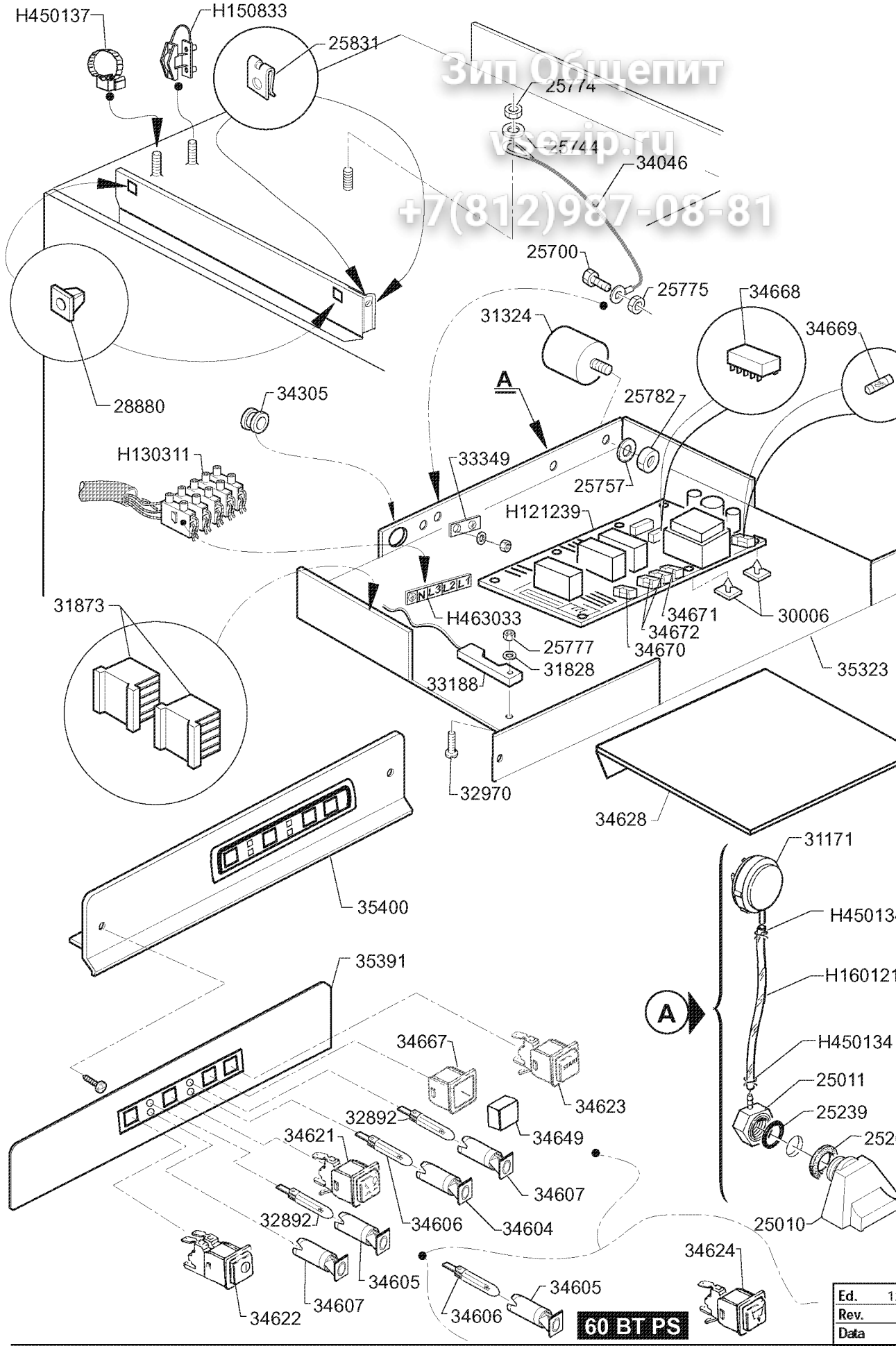
Зип Общежит  
 vsezip.ru  
 +7(812)987-08-81

|      |
|------|
| Ed.  |
| Rev. |
| Date |

Зип-Общепит

zip.ru

+7(812)987-08-81



H450137

H150833

25831

25774

34046

25700

25775

34668

34669

28880

34305

31324

25782

H130311

33349

25757

H121239

30006

31873

H463033

25777

34671

34672

34670

31828

33188

35323

32970

34628

31171

H450134

H160121

H450134

25011

25239

25239

35400

35391

34667

34623

32892

34649

34621

34607

32892

34606

34604

25010

34622

34607

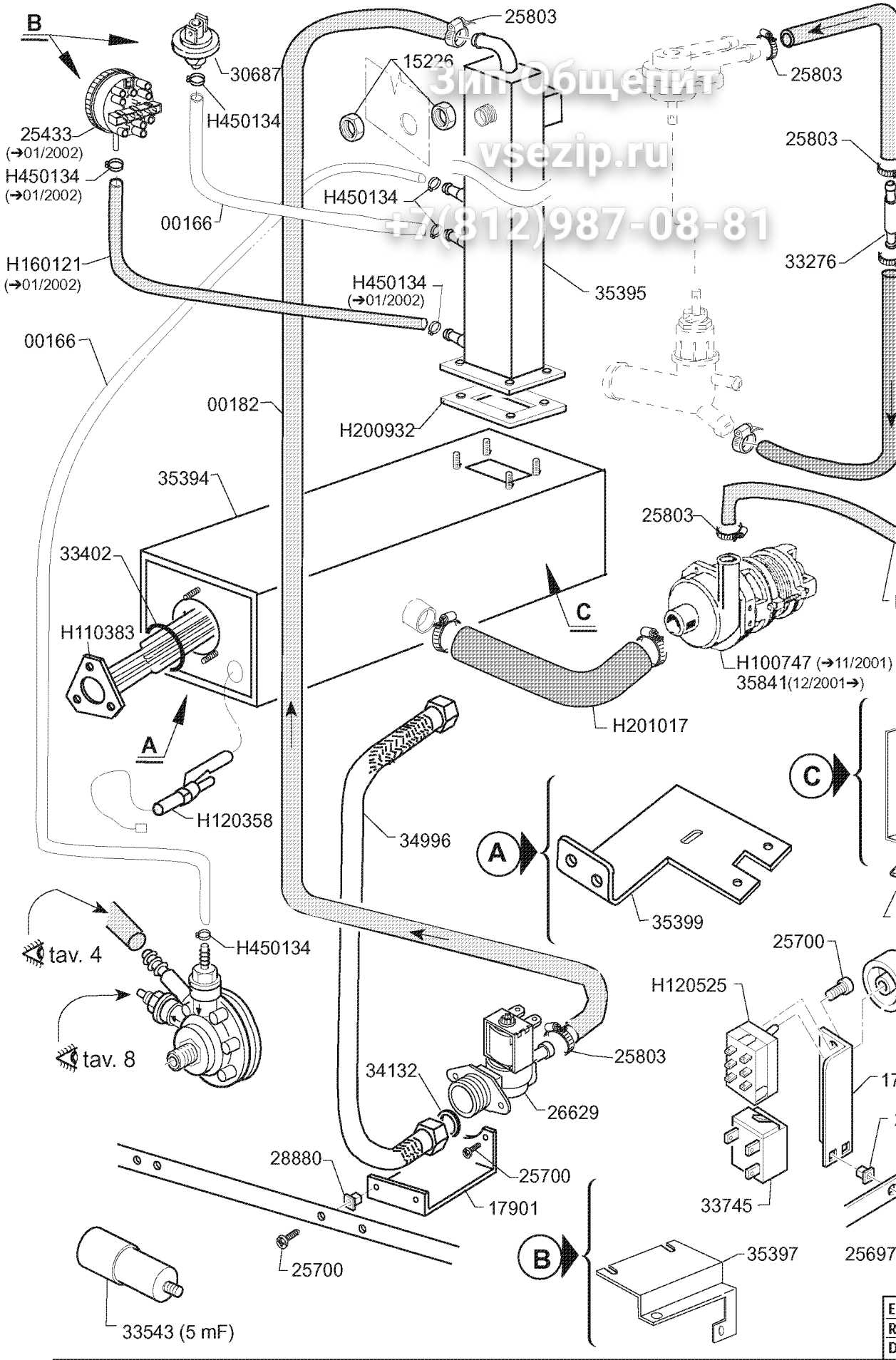
34606

34605

34624

**60 BT PS**

|      |   |
|------|---|
| Ed.  | 1 |
| Rev. |   |
| Data |   |

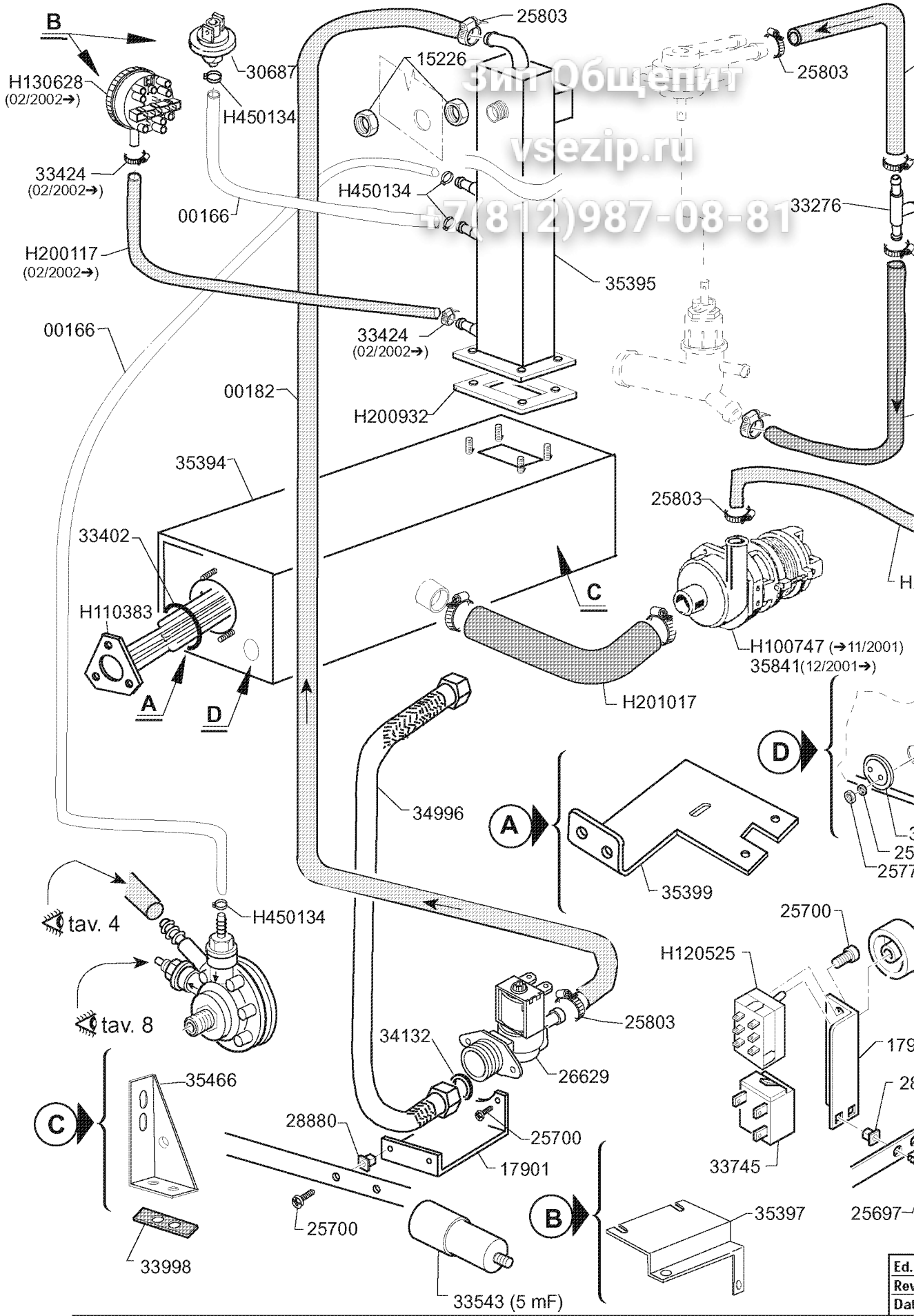


Зип ОбщениТ  
vsezip.ru  
+7(812)987-08-81

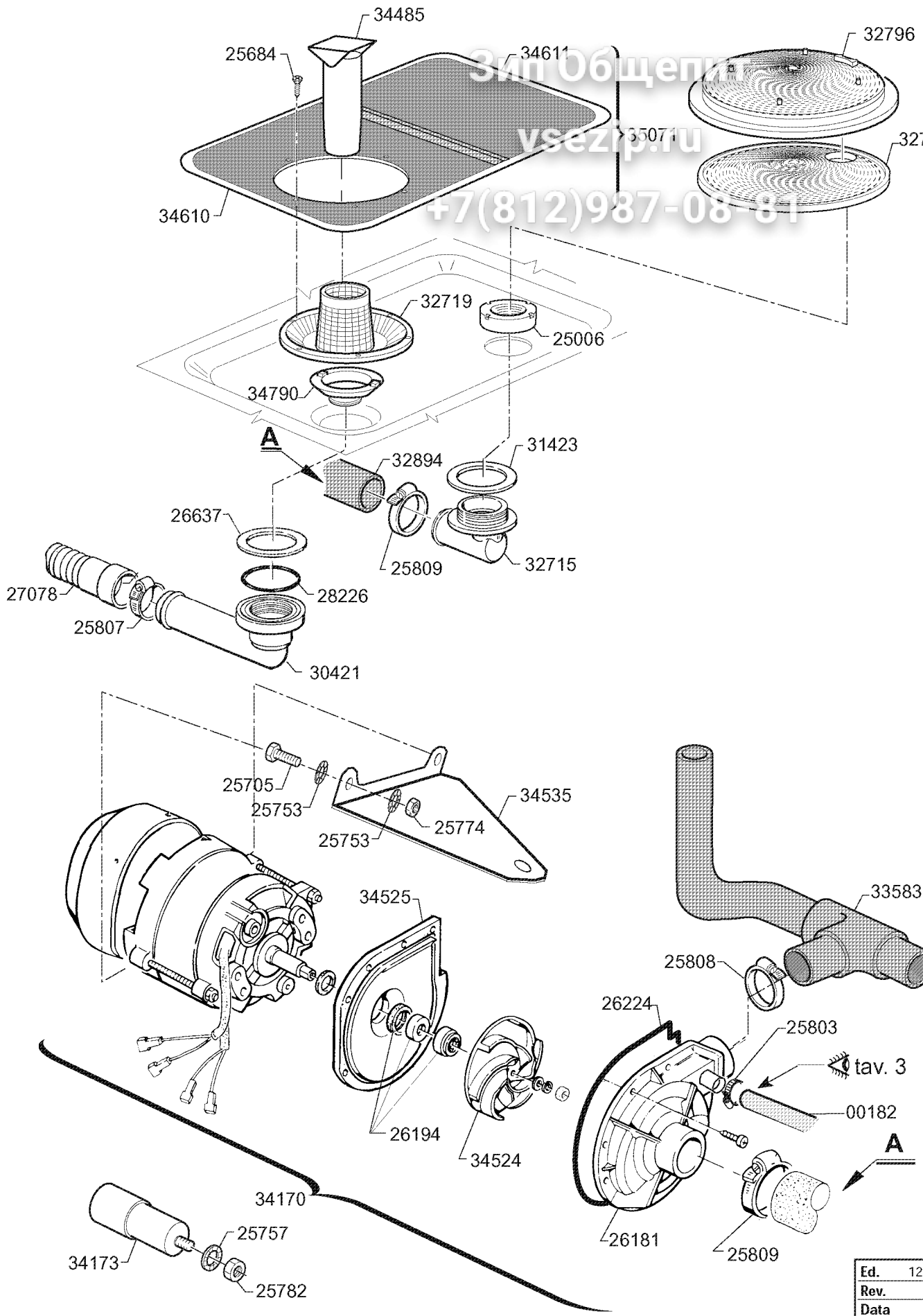
E  
R  
D

Зит Общепит  
vsezip.ru

+7(812)987-08-81



|      |
|------|
| Ed.  |
| Rev. |
| Da   |

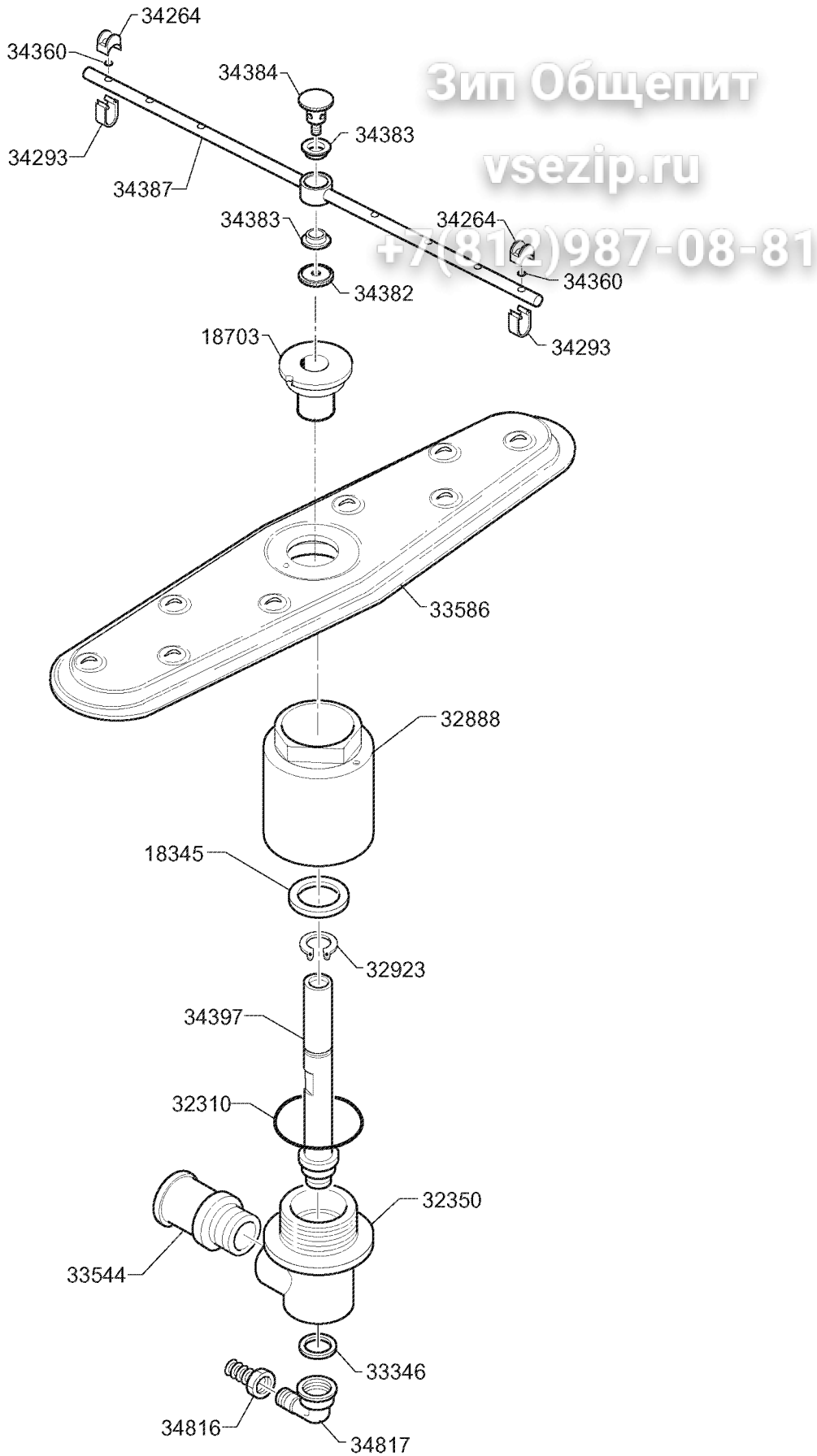


|      |    |
|------|----|
| Ed.  | 12 |
| Rev. |    |
| Data |    |

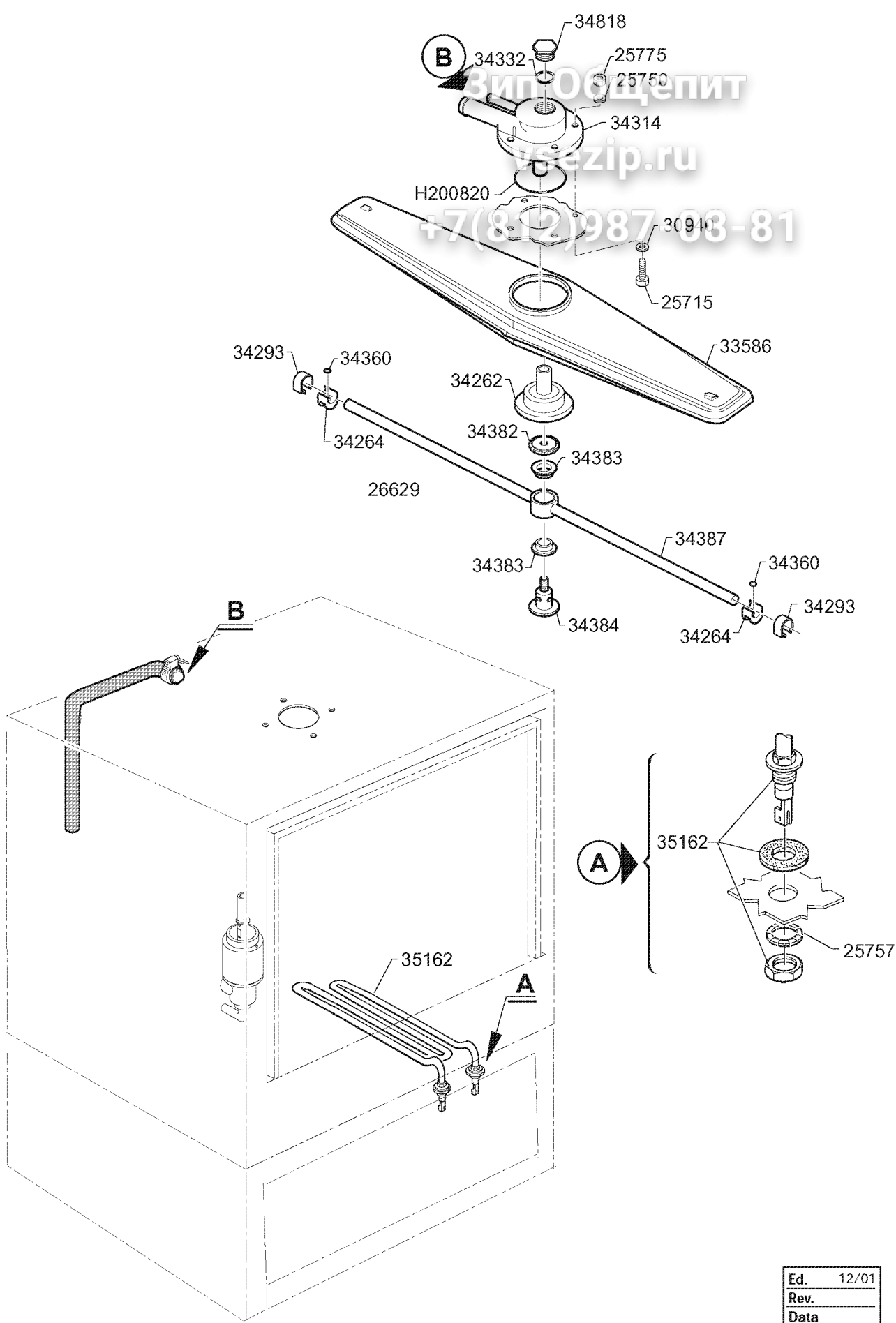
Зип Общепит

vsezip.ru

+7(812)987-08-81



|      |       |
|------|-------|
| Ed.  | 12/01 |
| Rev. |       |
| Data |       |



|      |       |
|------|-------|
| Ed.  | 12/01 |
| Rev. |       |
| Data |       |



Зип Общепит

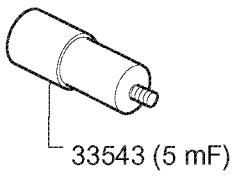
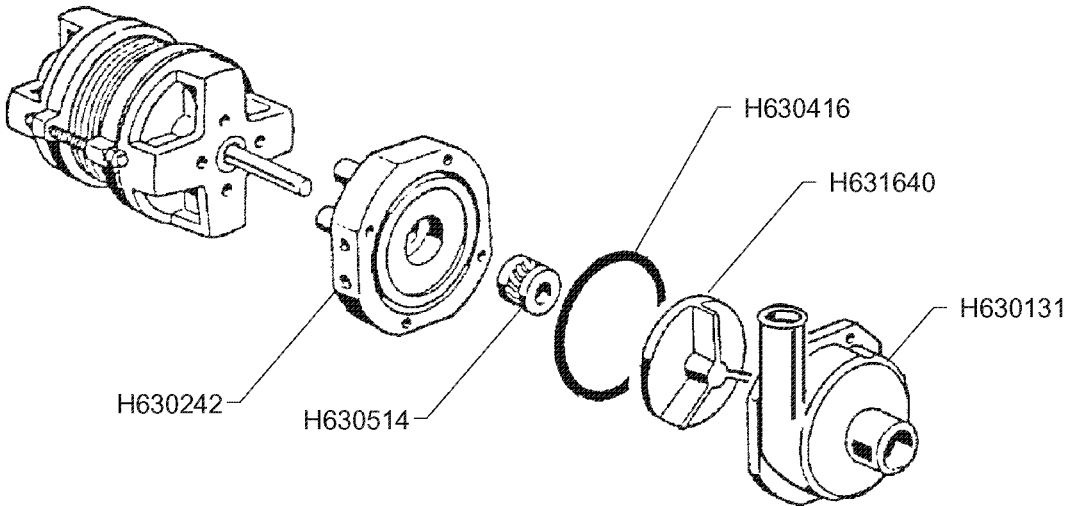
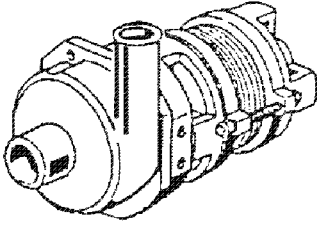
H100747

vsezip.ru

220/240V - 50 Hz  
Kw. 0,073

471(12)987-08-81

(→11/2001)



|      |       |
|------|-------|
| Ed.  | 12/01 |
| Rev. |       |
| Data |       |

Зип Общепит

vsezip.ru

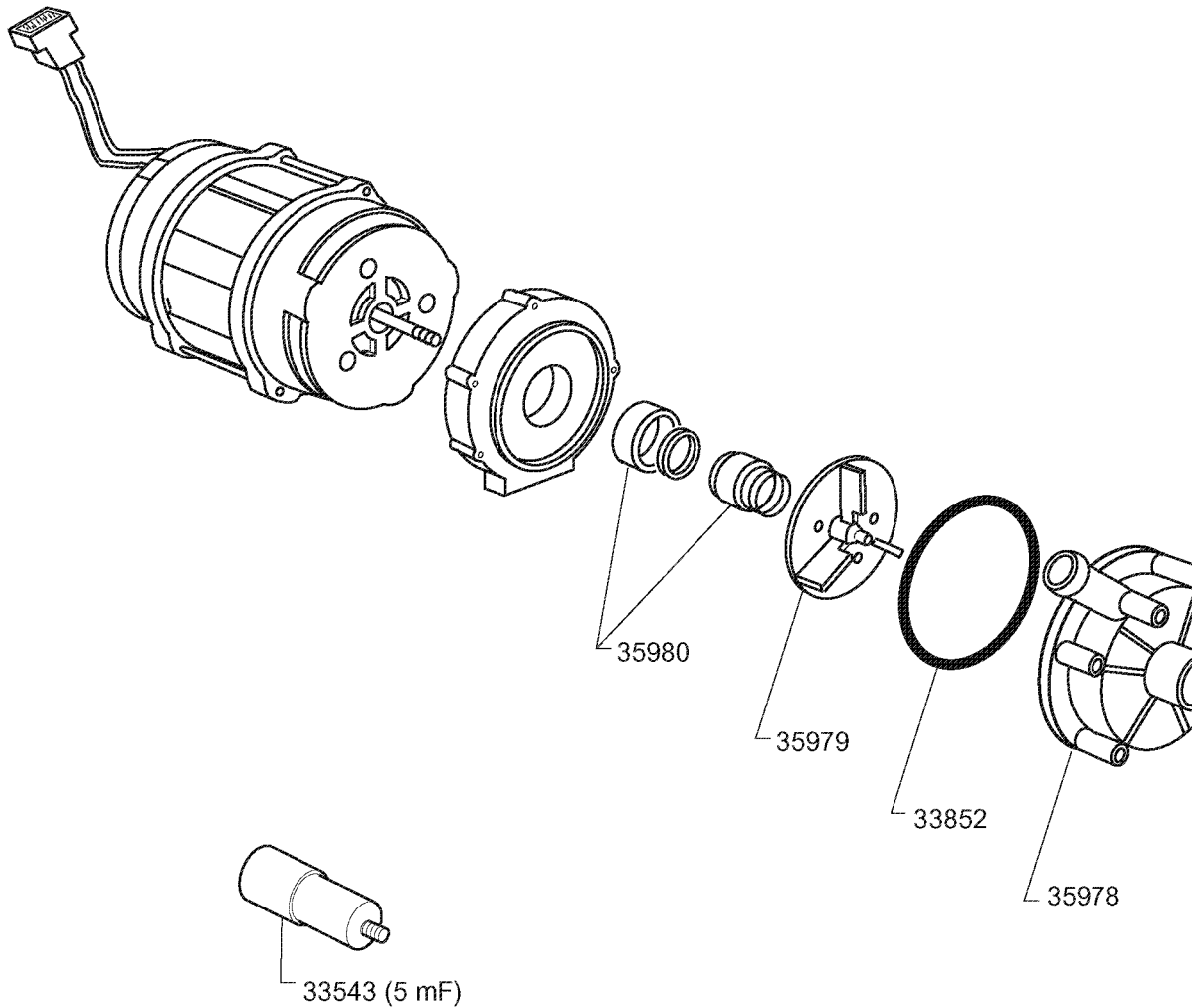
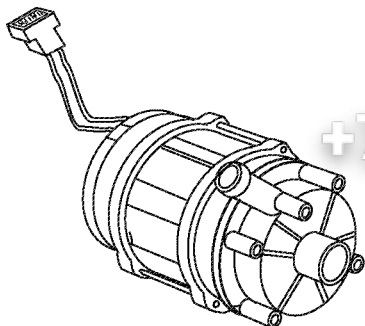
35841

+7(812)987-08-81

230 V - 50 Hz

Kw. 0,2

(12/2001→)

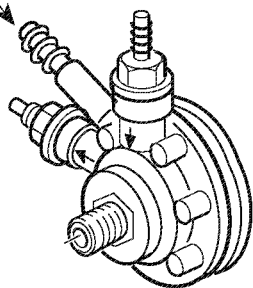


Зип Общепит

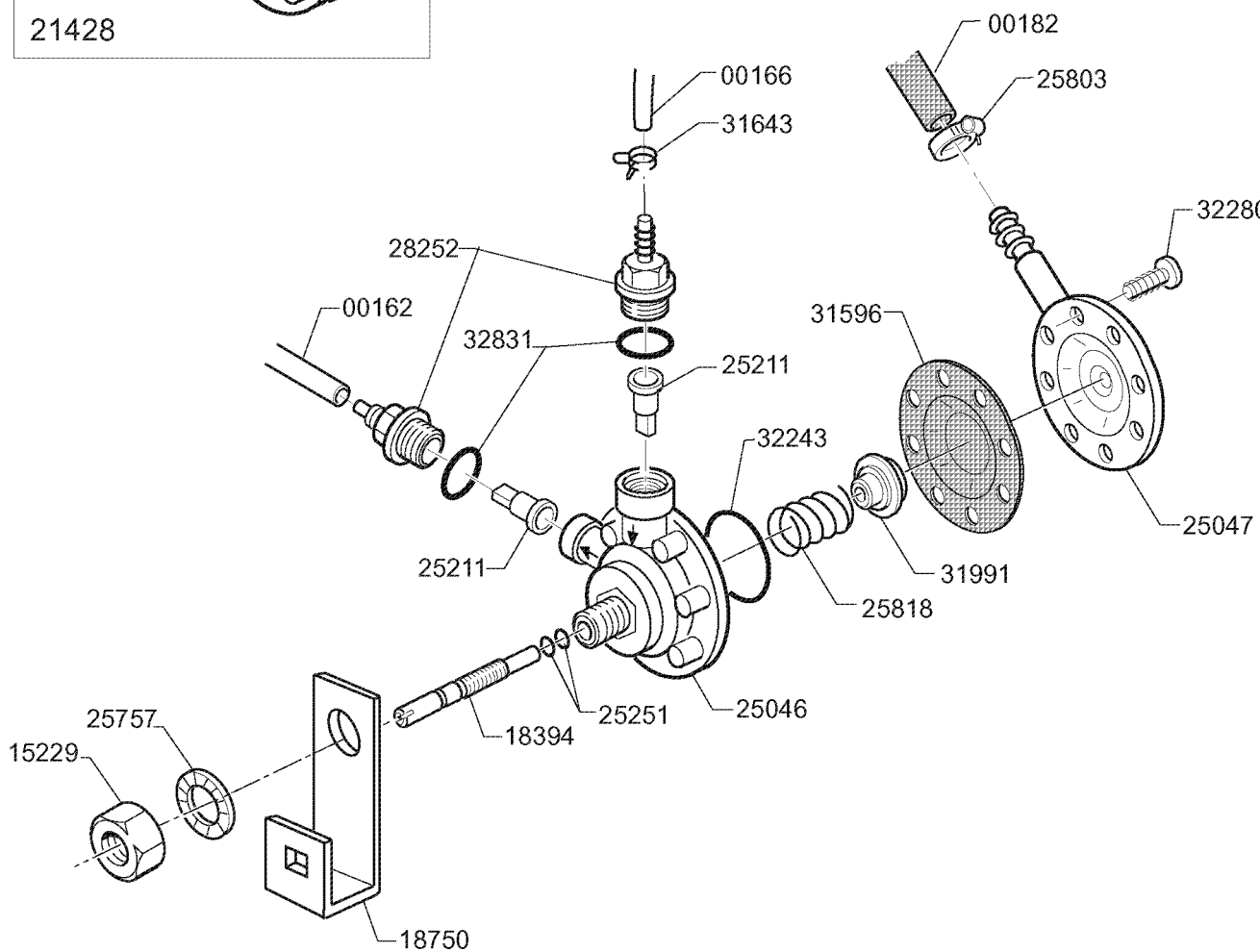
vsezip.ru

+7(812)987-08-81

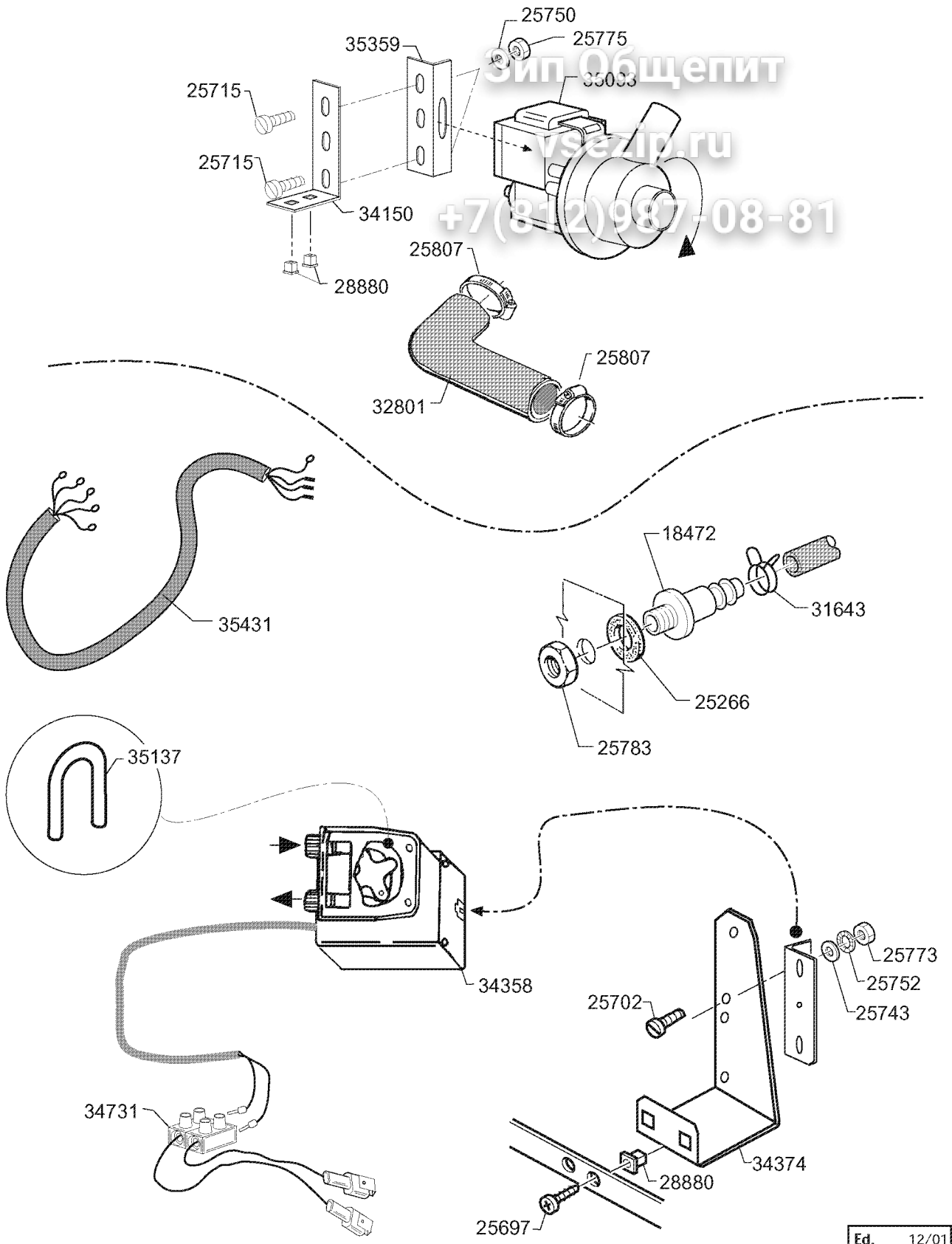
Тав. 3



21428



|      |   |
|------|---|
| Ed.  | 1 |
| Rev. |   |
| Data |   |



Эип Общепит

vsezip.ru

+7(812)987-08-81

|      |       |
|------|-------|
| Ed.  | 12/01 |
| Rev. |       |
| Data |       |

| Seite | Pos | Kredtor Artikel Nr. | IT                             | GB                                 |
|-------|-----|---------------------|--------------------------------|------------------------------------|
| 002   |     | 15568               | PERNO MOBILE X PORTELLO        |                                    |
| 002   |     | 15995               | BUSSOLA FISS. MANIGLIA STS     | PUSH SPRING FIX HANDLE STS         |
| 002   |     | 17863               | DISTANZIALE GUIDA              | DIS.TANCE GUIDE                    |
| 002   |     | 18829               | MANIGLIA X PORT. STS/APS/C 60  | HANDLE X DOOR STS/APS/C 60         |
| 002   |     | 25209               | PIEDINI BASE ESAGONALE         | FEET BASE HEXAG.                   |
| 002   |     | 25266               | GUARNIZIONE PIATTA 18 X 10 X 2 | FLAT GASKET 18 X 10 X 2            |
| 002   |     | 25693               | VITE AUTOFIL. TS 4,2X13 INOX   | SELF-TAPPING SCREW TS 4,2X13 SS    |
| 002   |     | 25694               | VITE AUTOFIL. TS 4,2X19 INOX   | SELF-TAPPING SCREW TS 4,2X19 SS    |
| 002   |     | 25697               | VITE AUTOF.T/TCROCE 3,9X13 ZIG | SELF-TAPPING SCREW T/ CROSS 3,9X13 |
| 002   |     | 25700               | VITE TC 4 X 8 CON ZIGRINATURA  | SCREW TC 4 X 8 KNURLED             |
| 002   |     | 25708               | VITE TE M 5 X 10 INOX          | SCREW TE M 5 X 10 SS               |
| 002   |     | 25743               | RONDELLA PIANA DIAM. 4         | SPACER PIANA DIAM. 4               |
| 002   |     | 25744               | RONDELLA PIANA DIAM.5          | SPACER PIANA DIAM.5                |
| 002   |     | 25752               | RONDELLA DENTEL.DIAM.4 D.E.    | SPACER DENTEL.DIAM.4 D.E.          |
| 002   |     | 25753               | RONDELLA DENTEL.DIAM.5 D.E.    | SPACER DENTEL.DIAM.5 D.E.          |
| 002   |     | 25773               | DADI 4 MA INOX 18/8            | NUTS 4 MA SS 18/8                  |
| 002   |     | 25791               | DADO AUTOBLOCCANTE 5 MA BASSO  | SELF-LOCKING NUT 5 MA BASSO        |
| 002   |     | 25831               | PIASTRINA X VITI AUTOF.LATI 7P | PLATE X SCREW AUTOF.LATI 7P        |
| 002   |     | 26691               | VITE TS M 4 X 8                | SCREW TS M 4 X 8                   |
| 002   |     | 26966               | TAPPO CHIUSURA FORO 10 DET.    | PLUG                               |
| 002   |     | 27155               | DADO IN PLASTICA 10 M          | PLASTIC NUT10 M                    |
| 002   |     | 28880               | MADREVITE                      | INTERNAL THREAD                    |
| 002   |     | 29594               | DADO CIECO 4 MA                | NUT BLIND 4 MA                     |
| 002   |     | 30438               | MOLLA X PERNO E PORTA          | SPRING X PIN AND DOOR              |
| 002   |     | 32969               | MAGNETE X CONTATTO M350 AP     | MAGNETO X CONTACT M350 AP          |
| 002   |     | 33179               | DADO IN GABBIETTA 4MA          | NUT IN HOLDER 4MA                  |
| 002   |     | 33277               | VITE AUTOF. TSP 2,9 X 9,5      | SELF-TAPPING SCREW TSP 2,9 X 9,5   |
| 002   |     | 33336               | SCROCCHETTO A ROTELLA          | DOOR CATCH                         |
| 002   |     | 33408               | GOMMA SPUGNA ADES. 8X4 NEOPREN | GASKET NEOPREN ADHESIVE 8 X 4      |
| 002   |     | 33576               | PROTEZ. INFERIORE STS/APS/C 60 |                                    |
| 002   |     | 33588               | GUIDA CESTELLO DX 53/60 BRILL  | GUIDE RACK DX 53/60                |
| 002   |     | 33589               | GUIDA CESTELLO SX 53/60 BRILL  | GUIDE RACK SX 53/60                |
| 002   |     | 33811               | PANNELLO SUPERIORE C 60        | PANEL UPPER C 60                   |
| 002   |     | 33948               | TERMOSTATO BIMETALLICO DOPPIO  | THERMOSTAT BIMET. DOUBLE CONTACT   |
| 002   |     | 34015               | TAPPO ESTREMITA'MANIGLIA SX    | PLUG END HANDLE SX                 |
| 002   |     | 34016               | TAPPO ESTREMITA'MANIGLIA DX    | PLUG END HANDLE DX                 |
| 002   |     | 34143               | PERNO PER TIRANTE PORTELLO     | PIN X ROD DOOR                     |
| 002   |     | 34144               | TIRANTE PER PORTELLO 60-80     | ROD X DOOR 60-80                   |
| 002   |     | 34470               | ANGOLARE GOMMA LABIRINTO VASCA | CORNER PROTECTION RUBBER           |
| 002   |     | 34548               | INVOLUCRO PORTA APS/STS/C60/98 |                                    |
| 002   |     | 34549               | PANNELLO CONTROP. APS/STS/C 60 |                                    |
| 002   |     | 34640               | FRONTALINO VASCA C60/98        |                                    |
| 002   |     | 34665/R             | PORTELLO TAMB.PREM. C/STS60/98 |                                    |
| 002   |     | 35396               | SQUADRETTA PARASPRUZZI         | HOLDER SPLASH BARRIER              |
| 002   |     | 35403               | PANNELLO POSTERIORE 60 BT      | PANEL REAR 60 BT                   |
| 002   |     | 35427               | VASCA-BASAMENTO 60 BT CPL      | TANK-BASE STAND 60 BT CPL          |
| 002   |     | 35467               | FERMACAVO 5024/2/15/26 STEAB   | CABLE FIX 5024/2/15/26 STEAB       |
| 002   |     | 35468               | RONDELLA ADATT.X FERMAC. 35467 |                                    |
| 002   |     | H160720             | TAPPO A SCATTO HEYCO D.8       | PLUG HEYCO D.8                     |
| 002   |     | H160838             | RONDEL.X GRANO TIRANTE FC/LF   | SLIDING WASHER TIE ROD FC          |
| 002   |     | H190619             | FERMO TIRANTE PORTA +LF/FC+    | DOOR CATCH B-F-R                   |
| 002   |     | H200494             | GUARNIZ.TERMOST.BIM.DOPPIO Ç   | GASKET FOR TANKTHERMOSTAT BT       |
| 002   |     | H331461             | -PIASTRINA PER TIRAN. G65/BC   | TIE ROD PLATE FOR G65-115          |
| 003   |     | 25010               | TRAPPOLA ARIA                  | AIR TRAP                           |
| 003   |     | 25011               | CALOTTA X TRAPPOLA ARIA        | COVER X AIR TRAP                   |
| 003   |     | 25239               | GUARN. OR PB 701 3112 X TRAPP. | GASKET OR PB 701 3112 x AIR TRAP   |
| 003   |     | 25263               | GUARN. PIATTA 38 X 25 X 2 TRAP | FLAT GASKET 38 X 25 X 2 A.TRAP     |
| 003   |     | 25700               | VITE TC 4 X 8 CON ZIGRINATURA  | SCREW TC 4 X 8 KNURLED             |
| 003   |     | 25744               | RONDELLA PIANA DIAM.5          | SPACER PIANA DIAM.5                |
| 003   |     | 25757               | RONDELLA DENTEL. DIAM. 12 D.E. | SPACER DENTEL. DIAM. 12 D.E.       |
| 003   |     | 25774               | DADI 5 MA                      | NUTS 5 MA                          |
| 003   |     | 25775               | DADO 6 MA                      | NUT 6 MA                           |
| 003   |     | 25777               | DADI 3 MA                      | NUTS 3 MA                          |
| 003   |     | 25782               | DADO 8 MA                      |                                    |
| 003   |     | 25831               | PIASTRINA X VITI AUTOF.LATI 7P | PLATE X SCREW AUTOF.LATI 7P        |
| 003   |     | 28880               | MADREVITE                      | INTERNAL THREAD                    |
| 003   |     | 30006               | DISTANZIALE X SUPP.CIRC.STAMP. |                                    |

| Seite | Pos | Kredtor Artikel Nr. | IT                                 | GB                                  |
|-------|-----|---------------------|------------------------------------|-------------------------------------|
| 003   |     | 31828               | RONDELLA DENTEL.E. DIAM.3          |                                     |
| 003   |     | 31873               | TELERUTTORE 220-240V- B6-30-10     | CONTACTOR 220V. - CN 5-10           |
| 003   |     | 32892               | LAMPADA NEON"VERDE" FL-T FM6,3     | LIG.IT BULB "NEON"GREEN" FL-T FM6,3 |
| 003   |     | 32970               | VITE TS 3 X 20 CROCE               | SCREW TS 3 X 20 cross               |
| 003   |     | 33188               | SENSORE MAGNETICO                  | SENSOR MAGNETIC                     |
| 003   |     | 33349               | TARGHETTA INDICAZIONE TERRA        |                                     |
| 003   |     | 34046               | CORDA IN NYLON X FERMOCASSETTO     |                                     |
| 003   |     | 34305               | PASSACAVO STEAB 6211/16/21         |                                     |
| 003   |     | 34604               | GEMMA ARANCIO SEG.LUM. S.57.3      | COVER "CRANCE" BRIGHT SIGN. S.57.3  |
| 003   |     | 34605               | GEMMA VERDE SEG.LUM. S.57.3        | COVER "GREEN" BRIGHT SIGN. S.57.3   |
| 003   |     | 34606               | LAMPADINA SERIE S 21.32 24V        | LIGHT BULB SERIE S 21.32 24V        |
| 003   |     | 34607               | GEMMA NERA                         | COVER BLACK                         |
| 003   |     | 34621               | INTERRUT.CM UNIP.DEV.CPL CICLO     | SWITCH ROLD CM SINGPOLE.DEV.        |
| 003   |     | 34622               | INTERRUT. CM BIP.DEV.CPL LINEA     | SWITCH ROLD CM DOUBLE P. DEV.       |
| 003   |     | 34623               | PULSANTE CM UNIP.NA CPL START      | PUSH-BUTT. ROLD CM SING.P.NA START  |
| 003   |     | 34624               | PULSANTE CM UNIP.NA CPL PSCAR      | PUSH-BUTT. ROLD CM SING.P.NA DRAI.P |
| 003   |     | 34628               | PROTEZ.PARTI ELETT.60 IN MILAR     |                                     |
| 003   |     | 34649               | TAPPO QUADRO X SERIE PULSANTE.DOM. |                                     |
| 003   |     | 34667               | SUPPORTO X TAPPO PULSANTE          |                                     |
| 003   |     | 34668               | MICROP.UNIECO-UNICOM               | MICROP.UNIECO-UNICOM                |
| 003   |     | 34669               | FUS.VETRO 250MA(UNIECO-UNICOM)     |                                     |
| 003   |     | 34670               | FUS.VETRO 1A (UNIECO-UNICOM)       |                                     |
| 003   |     | 34671               | FUS.VETRO 2A (UNICOM)              |                                     |
| 003   |     | 34672               | FUS.VETRO 6,3A (UNIECO-UNICOM)     |                                     |
| 003   |     | 35323               | SUPPORTO IMP.EL. C/STS 60          |                                     |
| 003   |     | 35391               | TARGA COMANDI 60 BT                | COMMAND FASCIAPANEL 60 BT           |
| 003   |     | 35400               | IMPIANTO ELETTRICO 60 BT 2°        |                                     |
| 003   |     | H121239             | TIMER ELT.UNICOM C/BREAK TANK\$    | ELECTR.TIMER UNICOM FOR BREAK TANK  |
| 003   |     | H130311             | MORSETT.5 POSTI ELETTRIGIBI        | TERMINAL BLOCK                      |
| 003   |     | H150833             | PRESSAC.EGB PA268/RO               | CABLE HOLDER BC/BR                  |
| 003   |     | H160121             | TUBO GOMMA NERA "5 X 9"            | HOSE EPDM D. 5 X 9                  |
| 003   |     | H450134             | FASCET. A DUE FILI D.9,3/8,8       | ELASTIC HOSE CLIP D.9,3/8,8         |
| 003   |     | H450137             | ATTACCO A COLLARE C/BASE 31900     | COLLAR CONNECTION WITH BASE 31900   |
| 003   |     | H463033             | TARGHETTA DOX SYSTEM FC544A \$     | FC544A NAME                         |
| 004   |     | 00166               | TUBETTO TRASP. 4X7 IN ROTOLO       | ROLL TUBE TRANSP. 8X4               |
| 004   |     | 00182               | TUBO GOMMA 11X19 CASER/15"BLU"     | HOSE 11X19 CASER/15"BLUE"           |
| 004   |     | 15226               | DADO 3/4"                          | NUT 3/4"                            |
| 004   |     | 17901               | SQUADRETTA ELETTROVALVOLA          | HOLDER SOLENOID VALVE               |
| 004   |     | 17955               | SQUADRETTA DOPPIA TERMOSTATI       |                                     |
| 004   |     | 25092               | MANOPOLA NERA INDICE BIANCO        |                                     |
| 004   |     | 25433               | PRESSOSTATO TAR. 40-20             | PRESSURE SWITCH TAR. 40-20          |
| 004   |     | 25697               | VITE AUTOF.T/TCROCE 3,9X13 ZIG     | SELF-TAPPING SCREW T/TCROSS 3,9X13  |
| 004   |     | 25700               | VITE TC 4 X 8 CON ZIGRINATURA      | SCREW TC 4 X 8 KNURLED              |
| 004   |     | 25803               | FASCETTA STRINGITUBO 13-20 ABA     | HOSE CLIP 13-20 ABA                 |
| 004   |     | 26629               | ELETTROVALVOLA SING.3/4" T/N       | SOLENOID VALVE SING.3/4" T/N        |
| 004   |     | 28880               | MADREVITE                          | INTERNAL THREAD                     |
| 004   |     | 30687               | PRESSOSTATO-INTERRUT. LVL N.C.     | PRESSURE SWITCH LVL N.C.            |
| 004   |     | 33276               | CONNETTORE A T-D11,5-COM180413     | CONNECTOR A T-D11,5-COM180413       |
| 004   |     | 33402               | GUARN. OR 6X56X68                  | GASKET OR 6X56X68                   |
| 004   |     | 33543               | CONDENSATORE 5 UF-450 V            | CAPACITOR 5 UF-450 V                |
| 004   |     | 33745               | LIMITATORE 110° RIARMO MANUALE     | LIMITATORE 110° RIARMO MANUALE      |
| 004   |     | 33998               | GOMMA ANTIVIBRANTE PER POMPA       | ANTIVIBRATION RUBBER PLATE FOR PUMP |
| 004   |     | 34132               | REGOLATORE QTA' 8 LT.              | CONTROL QTY 8 LT.                   |
| 004   |     | 34996               | TUBO DI CARICO 90°C VDE            |                                     |
| 004   |     | 35394               | BOILER 60 BT                       | BOOSTER 60 BT                       |
| 004   |     | 35395               | COLONNA BREAK TANK                 | COLUMN BREAK TANK                   |
| 004   |     | 35397               | SQUADRETTA PRESSOSTATI             | HOLDER PRESSURE SWITCHES            |
| 004   |     | 35399               | PIASTRA FISSAGGIO BOILER           | PLATE FIXING BOOSTER                |
| 004   |     | 35466               | PIASTRA POMPA STS 60 BT            | PLATE PUMP 60 BT                    |
| 004   |     | 35841               | POMPA KW 0,2 ZF131DX 230V-60BT     |                                     |
| 004   |     | H100747             | POMPA KW 0,073 220/240-50 4208     | PUMP 0,073 KW                       |
| 004   |     | H110383             | RES.FL.6000 240/415-5000 220       | HEAT.ELEMENT 6KW 240/415-5KW 220    |
| 004   |     | H120358             | REED GALLEGGIANTEXB.T.             | FLOATING MAGN.SWITCH                |
| 004   |     | H120525             | TERMOSTATO A 2 TEMPERATURE TRZ     | BOOSTER THERMOSTAT FC-C MODELS      |
| 004   |     | H160121             | TUBO GOMMA NERA "5 X 9"            | HOSE EPDM D. 5 X 9                  |
| 004   |     | H200759             | MANICOTTO PER ECORINS SE/1         | DELIVERY HOSE FOR ECORINSE AC-ACR   |
| 004   |     | H200932             | GUARNIZ.BOILER/BREAK TANK °        | BOILER GASKET                       |

| Seite | Pos | Kredtor Artikel Nr. | IT                              | GB                                  |
|-------|-----|---------------------|---------------------------------|-------------------------------------|
| 005   |     | 00166               | TUBETTO TRASP. 4X7 IN ROLO      | ROLL TUBE TRANSP. 8X4               |
| 005   |     | 00182               | TUBO GOMMA 11X19 CASER/15"BLU"  | HOSE 11X19 CASER/15"BLUE"           |
| 005   |     | 15226               | DADO 3/4"                       | NUT 3/4"                            |
| 005   |     | 17901               | SQUADRETTA ELETTROVALVOLA       | HOLDER SOLENOID VALVE               |
| 005   |     | 17955               | SQUADRETTA DOPPIA TERMOSTATI    |                                     |
| 005   |     | 25092               | MANOPOLA NERA INDICE BIANCO     |                                     |
| 005   |     | 25697               | VITE AUTOF.T/TCROCE 3,9X13 ZIG  | SELF-TAPPING SCREW T/TCROSS 3,9X13  |
| 005   |     | 25700               | VITE TC 4 X 8 CON ZIGRINATURA   | SCREW TC 4 X 8 KNURLED              |
| 005   |     | 25750               | RONDELLA SPACCATA DIAM. 6       | SPACER SPACER DIAM 6                |
| 005   |     | 25775               | DADO 6 MA                       | NUT 6 MA                            |
| 005   |     | 25803               | FASCETTA STRINGITUBO 13-20 ABA  | HOSE CLIP 13-20 ABA                 |
| 005   |     | 26629               | ELETTROVALVOLA SING.3/4" T/N    | SOLENOID VALVE SING.3/4" T/N        |
| 005   |     | 28880               | MADREVITE                       | INTERNAL THREAD                     |
| 005   |     | 30687               | PRESSOSTATO-INTERRUT. LVL N.C.  | PRESSURE SWITCH LVL N.C.            |
| 005   |     | 33276               | CONNETTORE A T-D11,5-COM180413  | CONNECTOR A T-D11,5-COM180413       |
| 005   |     | 33402               | GUARN. OR 6X56X68               | GASKET OR 6X56X68                   |
| 005   |     | 33424               | FASCETTA FE ZN 11-17 H=9        |                                     |
| 005   |     | 33543               | CONDENSATORE 5 UF-450 V         | CAPACITOR 5 UF-450 V                |
| 005   |     | 33745               | LIMITATORE 110° RIARMO MANUALE  | LIMITATORE 110° RIARMO MANUALE      |
| 005   |     | 33998               | GOMMA ANTIVIBRANTE PER POMPA    | ANTIVIBRATION RUBBER PLATE FOR PUMP |
| 005   |     | 34132               | REGOLATORE QTA' 8 LT.           | CONTROL QTY 8 LT.                   |
| 005   |     | 34996               | TUBO DI CARICO 90°C VDE         |                                     |
| 005   |     | 35394               | BOILER 60 BT                    | BOOSTER 60 BT                       |
| 005   |     | 35395               | COLONNA BREAK TANK              | COLUMN BREAK TANK                   |
| 005   |     | 35397               | SQUADRETTA PRESSOSTATI          | HOLDER PRESSURE SWITCHES            |
| 005   |     | 35399               | PIASTRA FISSAGGIO BOILER        | PLATE FIXING BOOSTER                |
| 005   |     | 35466               | PIASTRA POMPA STS 60 BT         | PLATE PUMP 60 BT                    |
| 005   |     | 35841               | POMPA KW 0,2 ZF131DX 230V-60BT  |                                     |
| 005   |     | 35901               | TAPPO CHIUSURA FORO GALLEGGIAN  |                                     |
| 005   |     | 35902               | DISCO X TAPPO CHIUS.FORO GALL.  |                                     |
| 005   |     | 35903               | GUARNIZIONE 21X38X3             | GASKET 21X38X3                      |
| 005   |     | H100747             | POMPA KW 0,073 220/240-50 4208  | PUMP 0,073 KW                       |
| 005   |     | H110383             | RES.FL.6000 240/415-5000 220    | HEAT.ELEMENT 6KW 240/415-5KW 220    |
| 005   |     | H120525             | TERMOSTATO A 2 TEMPERATURE TRZ  | BOOSTER THERMOSTAT FC-C MODELS      |
| 005   |     | H130628             | PRESSOSTATO A 3L 110-70 \$      | PRESSURE SWITCH                     |
| 005   |     | H200117             | TUBO GOMMA 8X15 INDUSTRIA 10    | RUBBER HOSE 7X16                    |
| 005   |     | H200759             | MANICOTTO PER ECORINSE SE/1     | DELIVERY HOSE FOR ECORINSE AC-ACR   |
| 005   |     | H200932             | GUARNIZ.BOILER/BREAK TANK °     | BOILER GASKET                       |
| 005   |     | H201017             | MANIC.ASP.POMPA RISC.LF/FC BT\$ | RINSE PUMP INLET HOSE LF/FC BT      |
| 005   |     | H450134             | FASCET. A DUE FILI D.9,3/8,8    | ELASTIC HOSE CLIP D.9,3/8,8         |
| 006   |     | 00182               | TUBO GOMMA 11X19 CASER/15"BLU"  | HOSE 11X19 CASER/15"BLUE"           |
| 006   |     | 25006               | GHIERA PILETTA ASP. P.          | NUT FO DRAIN SUCT. P.               |
| 006   |     | 25684               | VITE AUTOFIL. TC 2,9X9,5 INOX   | SELF-TAPPING SCREW TC 2,9X9,5 SS    |
| 006   |     | 25705               | VITE TE M 5 X 16 INOX 18/8      | SCREW TE M 5 X 16 SS 18/8           |
| 006   |     | 25753               | RONDELLA DENTEL.DIAM.5 D.E.     | SPACER DENTEL.DIAM.5 D.E.           |
| 006   |     | 25757               | RONDELLA DENTEL. DIAM. 12 D.E.  | SPACER DENTEL. DIAM. 12 D.E.        |
| 006   |     | 25774               | DADI 5 MA                       | NUTS 5 MA                           |
| 006   |     | 25782               | DADO 8 MA                       |                                     |
| 006   |     | 25803               | FASCETTA STRINGITUBO 13-20 ABA  | HOSE CLIP 13-20 ABA                 |
| 006   |     | 25807               | FASCETTA STRINGITUBO 26-38 ABA  | HOSE CLIP 26-38 ABA                 |
| 006   |     | 25808               | FASCETTE STRINGITUBO 27-51CLAM  | HOSE CLIP 27-51CLAM                 |
| 006   |     | 25809               | FASCETTA STRINGITUBO 40-64CLAM  | HOSE CLIP 40-64CLAM                 |
| 006   |     | 26181               | COPERCHIO ELETTROP.HP 0,5-0,75  | COVER WASH PUMP HP 0,5-0,75         |
| 006   |     | 26194               | TENUTA MECC.EL.HP0,25-0,5-0,75  | SHAFT SEAL WASH P.HP0,25-0,5-0,75   |
| 006   |     | 26224               | GUARNIZIONE CORPO POMPA         | GASKET PUMP HOUSING                 |
| 006   |     | 26637               | GUARNIZIONE PIATTA 55 X 42 X 2  | GUARNIZIONE PIATTA 55 X 42 X 2      |
| 006   |     | 27078               | TUBO DI SCARICO DIAM.24X1500    | DRAIN HOSE DIAM.24X1500             |
| 006   |     | 28226               | GUARNIZ.OR 3181 X PIPA SCARICO  | GASKET OR 3181 X DRAIN LUG          |
| 006   |     | 30421               | RACCORDO DI SCARICO LUNGO       | DRAIN FITTING LONG                  |
| 006   |     | 31423               | GUARNIZIONE PIATTA 65X51X3      | GASKET FLAT 65X51X3                 |
| 006   |     | 32715               | PILETTA DI ASP.POMPA 90°        | SUCTION ELBOW PUMP 90°              |
| 006   |     | 32719               | FILTRO RACCOGLITORE             | COLLECTOR FILTER                    |
| 006   |     | 32795               | FONDO FILTRO CIRCOLARE          | BOTTOM ROUND FILTER                 |
| 006   |     | 32796               | COPERCHIO FILTRO CIRCOLARE      | COVER ROUND FILTER                  |
| 006   |     | 32894               | MANICOTTO ASPIR.STS 60          | SUCTION SLEEVE.STS 60               |
| 006   |     | 33583               | MANICOTTO MAND.LAV. 53/60       | OUTLET SLEEVE WASH 53/60            |
| 006   |     | 34170               | ELETTROPOMPA HP. 1 STS/C60      | WASH PUMP HP. 1 STS/C60 C80         |

| Seite | Pos | Kredtor Artikel Nr. | IT                              | GB                                 |
|-------|-----|---------------------|---------------------------------|------------------------------------|
| 006   |     | 34524               | GIRANTE LGB 0591 M8SX ZF 340    | IMPELLER LGB 0591 M8SX ZF 340      |
| 006   |     | 34525               | FLANGIA LGB ZF 340              |                                    |
| 006   |     | 34535               | PIASTRA ADATT.FISS.POMPA LGB    |                                    |
| 006   |     | 34610               | FILTRO VASCA SX                 | FILTER TANK SX                     |
| 006   |     | 34611               | FILTRO VASCA DX                 | FILTER TANK DX                     |
| 006   |     | 34790               | PILETTA DI SCARICO SERIE 60     | DRAIN ELBOW SERIE 60               |
| 006   |     | 35071               | FILTRO VASCA RIC. 60            |                                    |
| 007   |     | 18345               | ANELLO DISTANZ.                 | RING DISTANCE ARM AP               |
| 007   |     | 18703               | BUSSOLA CENTR.ASTA LAV.INF.STS  | BUSH SPRING CENT. WASHARM LOW.STS  |
| 007   |     | 32310               | GUARNIZIONE OR 3200             | GASKET OR 3200                     |
| 007   |     | 32350               | GRUPPO CENTR.LAV-RISC.AP        | WASH-RINSE SUPPORT BOTTOM AP       |
| 007   |     | 32888               | BUSSOLA CENTR.RIDUZ. 53/60      | BUSH SPRING CENTR.REDUCT. 53/60    |
| 007   |     | 32923               | SEEGER X ALBERO O 14            | SNAP RING O 14                     |
| 007   |     | 33346               | DISCO GRUPPO CENTRALE           | DISC CENTRAL SUPPORT               |
| 007   |     | 33544               | RACCORDO PORTAGOMMA 1/2 "       | HOSE FITTING 1/2 "                 |
| 007   |     | 33586               | MULINELLO LAVAGGIO SUP/INF. 60  | WASHARM UPP./LOW. 60               |
| 007   |     | 34264               | GETTO RISC.CON MOLLETTA         | RINSE JET WITH SPRING              |
| 007   |     | 34293               | MOLLETTA BLOCCAGGIO GETTO       | JET BLOCK SPRING                   |
| 007   |     | 34360               | GUARNIZIONE OR 7 X 1 NBR 70     | GASKET OR 7 X 1 NBR 70             |
| 007   |     | 34382               | GHIERA DIST. RISC. ROT. SX      | DISTANCE WASHER RINSE LEFT TURNING |
| 007   |     | 34383               | BUSSOLA MOZZO MULINELLO RISC.   | BUSH SPRING HUB RINSE ARM          |
| 007   |     | 34384               | PERNO MULINELLO RISCIAQUO       | PIN RINSE ARM                      |
| 007   |     | 34387               | MULINELLO RISC.53-60 R. S/ANT.  | RINSE ARM 53-60 R. S/ANT.          |
| 007   |     | 34397               | ALBERO RISC. INF. STS-C 53-60   | RINSE SHAFT LOW. STS-C 53-60       |
| 007   |     | 34816               | PORTAGOMMA INOX 1/4" G          | HOSE FITTING SS 1/4" G             |
| 007   |     | 34817               | GOMITO INOX F/F 1/4" G          | ELBOW SS F/F 1/4" G                |
| 008   |     | 25715               | VITE TE M 6 X 16 INOX           | SCREW TE M 6 X 16 SS               |
| 008   |     | 25750               | RONDELLA SPACCATA DIAM. 6       | SPACER SPACCATA DIAM. 6            |
| 008   |     | 25757               | RONDELLA DENTEL. DIAM. 12 D.E.  | SPACER DENTEL. DIAM. 12 D.E.       |
| 008   |     | 25775               | DADO 6 MA                       | NUT 6 MA                           |
| 008   |     | 26629               | ELETTRIVALVOLA SING.3/4" T/N    | SOLENOID VALVE SING.3/4" T/N       |
| 008   |     | 30940               | RONDELLA PIANA NERA DIAM. 6     | SPACER FLAT BLACK DIAM. 6          |
| 008   |     | 33586               | MULINELLO LAVAGGIO SUP/INF. 60  | WASHARM UPP./LOW. 60               |
| 008   |     | 34262               | BUSSOLA CENTRALE H.28MULIN.SUP  | CENTRAL BUSH SPRING H.28MULIN.SUP  |
| 008   |     | 34264               | GETTO RISC.CON MOLLETTA         | RINSE JET WITH SPRING              |
| 008   |     | 34293               | MOLLETTA BLOCCAGGIO GETTO       | JET BLOCK SPRING                   |
| 008   |     | 34314               | SUPPORTO MULINELLO SUP. C-ST5   | HOLDER WASHARM UPP. C-ST5          |
| 008   |     | 34332               | GUARNIZIONE OR 128 TAPPO SUPP.  | GASKET OR 128 PLUG SUPP.           |
| 008   |     | 34360               | GUARNIZIONE OR 7 X 1 NBR 70     | GASKET OR 7 X 1 NBR 70             |
| 008   |     | 34382               | GHIERA DIST. RISC. ROT. SX      | DISTANCE WASHER RINSE LEFT TURNING |
| 008   |     | 34383               | BUSSOLA MOZZO MULINELLO RISC.   | BUSH SPRING HUB RINSE ARM          |
| 008   |     | 34384               | PERNO MULINELLO RISCIAQUO       | PIN RINSE ARM                      |
| 008   |     | 34387               | MULINELLO RISC.53-60 R. S/ANT.  | RINSE ARM 53-60 R. S/ANT.          |
| 008   |     | 34818               | TAPPO INOX 1/2" G               | PLUG SS 1/2" G                     |
| 008   |     | 35162               | RESIS. V. 2000 W-230V RAC.INOX  | HEAT.EL. V. 2000 W-230V RAC.SS     |
| 008   |     | H200820             | GUARN.OR 5,33X46,99X57,6        | O-RING151 46,99X5,33X57,6          |
| 009   |     | 33543               | CONDENSATORE 5 UF-450 V         | CAPACITOR 5 UF-450 V               |
| 009   |     | H100747             | POMPA KW 0,073 220/240-50 4208  | PUMP 0,073 KW                      |
| 009   |     | H630131             | CHIOCCIOLA POMPA FIR TIPO 4208  | VOLUTE PUMP FIR T.4208             |
| 009   |     | H630242             | FLANGIA POMPA FIR TIPO 4208 \$  | BACKPLATE FIR T.4208               |
| 009   |     | H630416             | -OR CHIOCC.0,12/0,3 TP2212-29   | OR FOR VOLUTE 0,12/0,3 TP2212-29   |
| 009   |     | H630514             | -TENUTA FRONTALE POMPA FIR4208  | PUMP SEAL HP 0,10-0,25-0,3 F       |
| 009   |     | H631640             | -GIR.HP0,20 D.72/2212-8F/50HZ   | IMPELLER D72 F2212 HP 0,12 50HZ    |
| 010   |     | 33543               | CONDENSATORE 5 UF-450 V         | CAPACITOR 5 UF-450 V               |
| 010   |     | 33852               | GUARNIZIONE OR.75,87*2.62       |                                    |
| 010   |     | 35841               | POMPA KW 0,2 ZF131DX 230V-60BT  |                                    |
| 010   |     | 35978               | CHIOCCIOLA POMPA ZF131 (35841)  |                                    |
| 010   |     | 35979               | GIRANTE ZF130 D.73 3P x (35841) |                                    |
| 010   |     | 35980               | TENUTA MECC.POMPA ZF131(35841)  |                                    |
| 011   |     | 00162               | ROTOLO TUBETTO 6X4 RILSAN       | ROLL TUBE 6X4 RILSAN               |
| 011   |     | 00166               | TUBETTO TRASP. 4X7 IN ROTOLO    | ROLL TUBE TRANSP. 8X4              |
| 011   |     | 00182               | TUBO GOMMA 11X19 CASER/15"BLU"  | HOSE 11X19 CASER/15"BLUE"          |
| 011   |     | 15229               | DADO FISS. DOSATORE             | LOCK NUT AID DISPENSER             |
| 011   |     | 18394               | VITE REGOLAZ.DOSATORE           | SCREW CONTROL DISPENSER            |
| 011   |     | 18750               | SQUADRETTA DOSATORE BRILL.      |                                    |
| 011   |     | 21428               | DOSATORE BRILL.COMENDA(2-28252) |                                    |
| 011   |     | 25046               | CORPO DOSATORE SUPER.           |                                    |



| Seite | Pos | Kredtor Artikel Nr. | IT                             | GB                                 |
|-------|-----|---------------------|--------------------------------|------------------------------------|
| 011   |     | 25251               | GUARNIZIONE OR 2012            | GASKET OR 2012                     |
| 011   |     | 25757               | RONDELLA DENTEL. DIAM. 12 D.E. | SPACER DENTEL. DIAM. 12 D.E.       |
| 011   |     | 25803               | FASCETTA STRINGITUBO 13-20 ABA | HOSE CLIP 13-20 ABA                |
| 011   |     | 25818               | MOLLA CILINDRICA (FILO)        | SPRING CYLINDRICAL (FILO)          |
| 011   |     | 28252               | RACCORDO ASPIRAZ.DOSATORE      | FITTING SUCTION DISPENSER          |
| 011   |     | 31596               | MEMBRANA DOSATORE              | MEMBRANE DISPENSER                 |
| 011   |     | 31643               | FASCETTA A FILO 7,3-7,8        | HOSE CLIP 7,3-7,8                  |
| 011   |     | 31991               | GUIDA MOLLA DOSATORE           | GUIDE SPRING DISPENSER             |
| 011   |     | 32243               | GUARNIZIONE OR 3156            | GASKET OR 3156                     |
| 011   |     | 32280               | VITE TRUCC.T/TCROCE 4 X 13     | SCREW CROSS 4 X 13                 |
| 011   |     | 32831               | GUARNIZIONE OR 2062            | GASKET OR 2062                     |
| 012   |     | 18472               | RACCORDO INIEZIONE DETERS.AP   | FITTING INJECT. DETERGENT AP       |
| 012   |     | 25266               | GUARNIZIONE PIATTA 18 X 10 X 2 | FLAT GASKET 18 X 10 X 2            |
| 012   |     | 25697               | VITE AUTOF.T/TCROCE 3,9X13 ZIG | SELF-TAPPING SCREW T/TCROSS 3,9X13 |
| 012   |     | 25702               | VITE TC CON ZIGRINATURA 4X14   | SCREW TC KNURLED 4X14              |
| 012   |     | 25715               | VITE TE M 6 X 16 INOX          | SCREW TE M 6 X 16 SS               |
| 012   |     | 25743               | RONDELLA PIANA DIAM. 4         | SPACER PIANA DIAM. 4               |
| 012   |     | 25750               | RONDELLA SPACCATO DIAM. 6      | SPACER SPACCATO DIAM. 6            |
| 012   |     | 25752               | RONDELLA DENTEL.DIAM.4 D.E.    | SPACER DENTEL.DIAM.4 D.E.          |
| 012   |     | 25773               | DADI 4 MA INOX 18/8            | NUTS 4 MA SS 18/8                  |
| 012   |     | 25775               | DADO 6 MA                      | NUT 6 MA                           |
| 012   |     | 25783               | DADO 10 MA                     | NUT 10 MA                          |
| 012   |     | 25807               | FASCETTA STRINGITUBO 26-38 ABA | HOSE CLIP 26-38 ABA                |
| 012   |     | 28880               | MADREVITE                      | INTERNAL THREAD                    |
| 012   |     | 31643               | FASCETTA A FILO 7,3-7,8        | HOSE CLIP 7,3-7,8                  |
| 012   |     | 32801               | MANICOTTO ASP.POM.SC.C/STS 60  | SUCTION SLEEVE DRAIN PUMP C/STS 60 |
| 012   |     | 34150               | SQUADRETTA SOST.POMPETTA SCAR. | HOLDER DRAIN PUMP                  |
| 012   |     | 34358               | POMPA PERISTALTICA SEKO PBR 3  | DETERGENT PUMP PERISTALTIC         |
| 012   |     | 34374               | SQUADRETTA FISS.POMP. DETERS.  | HOLDER FIXING DETERG.PUMP          |
| 012   |     | 34731               | MORSETTO CONNESS.ELETT.X AUTOC |                                    |
| 012   |     | 35093               | POMPA SCAR.HANNING DPS 25 50HZ | DRAIN PUMP HANNING TIPO DPS 25     |
| 012   |     | 35137               | TUBETTO POMPETTA DET.SEKO PG3  | HOSE PUMP DET.SEKO PG3             |
| 012   |     | 35359               | SQUADR.XPSCAR. HANNING C/STS60 | HOLDER.XP. DRAIN. HANNING C/STS60  |
| 012   |     | 35431               | FILI COLLEGAM. PS/PD X SCHEDA  | CABLE LOOM PS/PD x PCB             |