

+7(812)987-08-81

Ersatzteilliste / spare parts list

DIVIMAT D 350



Bitte geben Sie bei jeder Ersatzteilbestellung folgende Informationen immer an:

- ✓ **Maschinentype**
- ✓ **Maschinennummer**
- ✓ **Positionsnummer der Ersatzteile**

Please always inform us with your spare parts order about the following details:

- ✓ **Machine type**
- ✓ **Machine serial number**
- ✓ **Spare part item number**

+7(812)987-08-81



Bild: Unreine Seite / picture: unclean side

FREEpro-Steuerung /
FREEpro-control
Pos. 01

Not-Aus /
emergency stop
Pos. 02



Bild: Reine Seite / picture: clean side

Türöffner /
door opener
Pos. 03

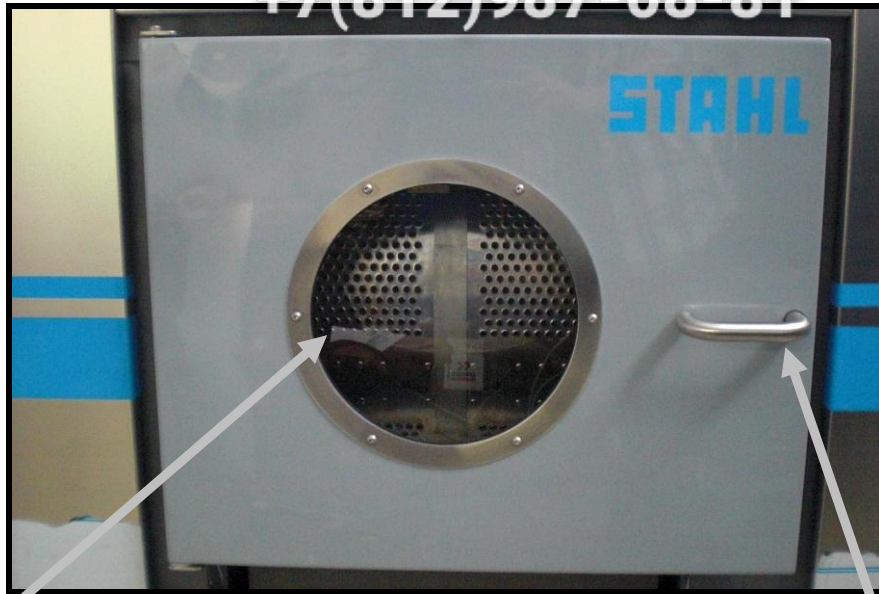


Bild: Unreine Seite / picture: unclean side

Türglas /
door glass
Pos. 04

Türgriff /
door knob
Pos. 05

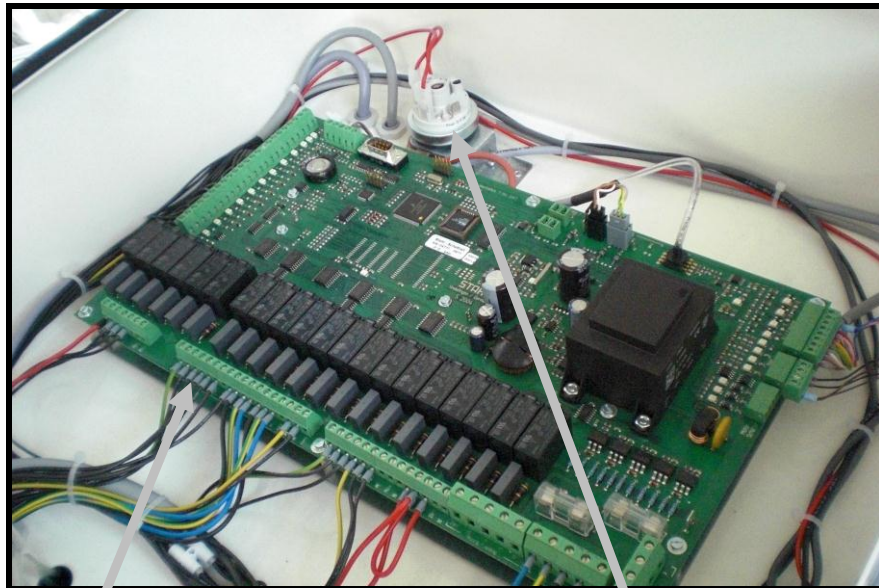
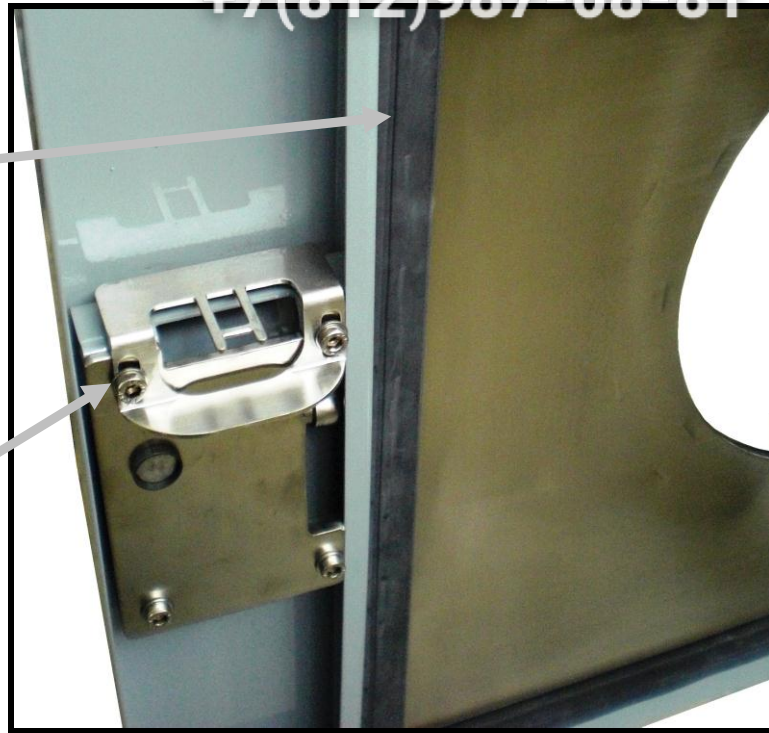


Entriegelungsmagnet /
unlocking solenoid
Pos. 06

+7(812)987-08-81

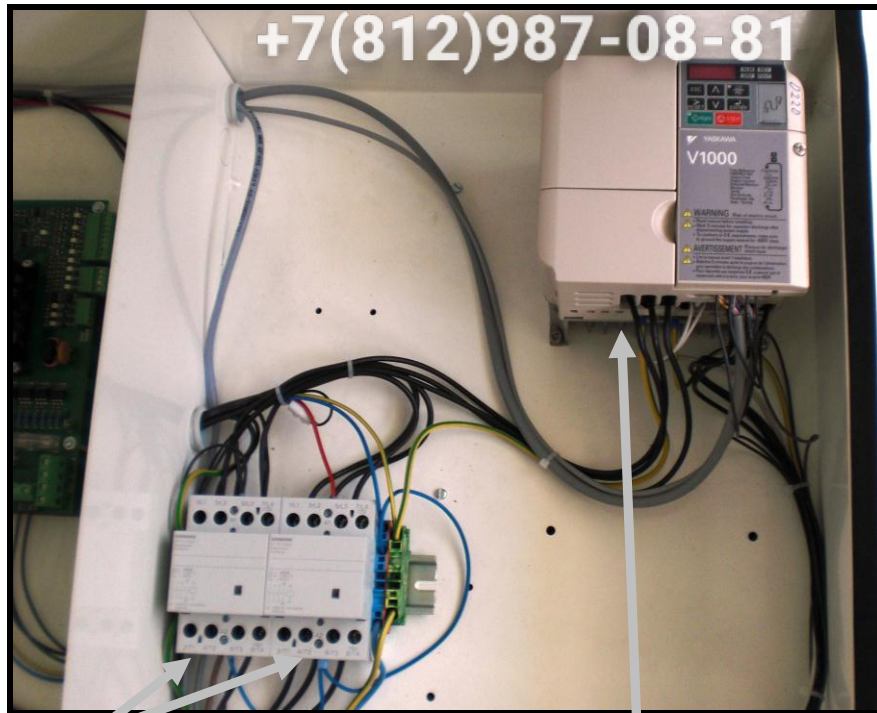
Türgummi /
door seal
Pos. 07

Schlüssel f.
Entriegelungsmagnet /
key f. unlocking solenoid
Pos. 08



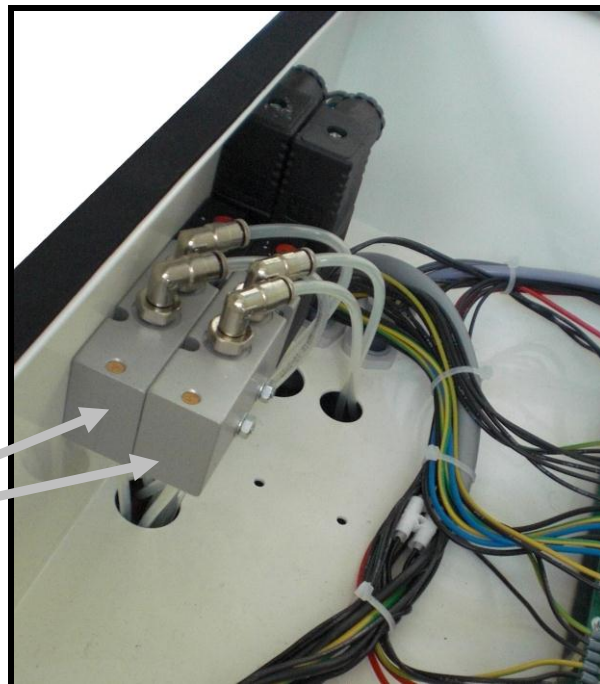
Leistungsplatine /
circuit board
Pos. 09

Druckdose /
housing
Pos. 10

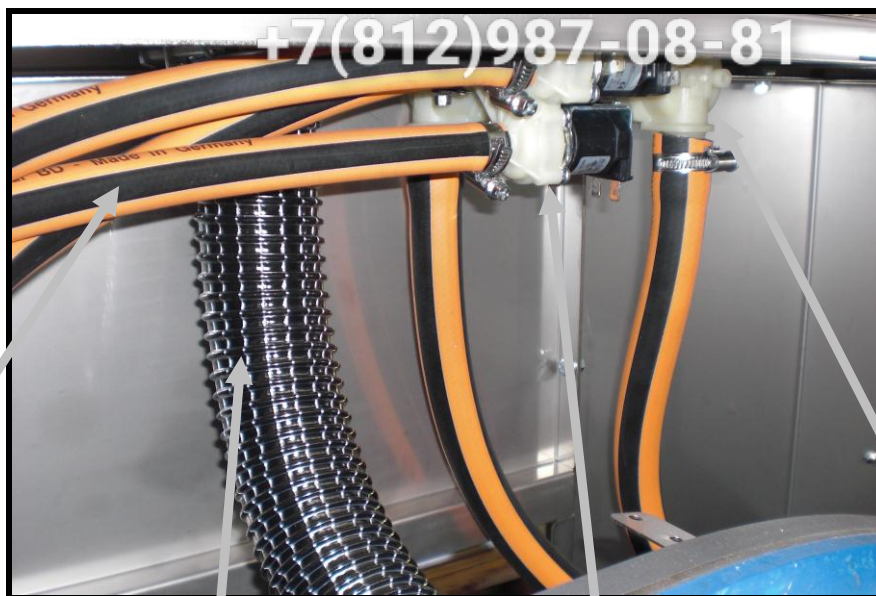


Heizungsschütz /
heating contactor
Pos. 11

Frequenzumrichter /
frequency converter
Pos. 12



5/2-Wegeventil /
5/2-way-valve
Pos. 13



Wasserschlauch /
water hose
Pos. 14

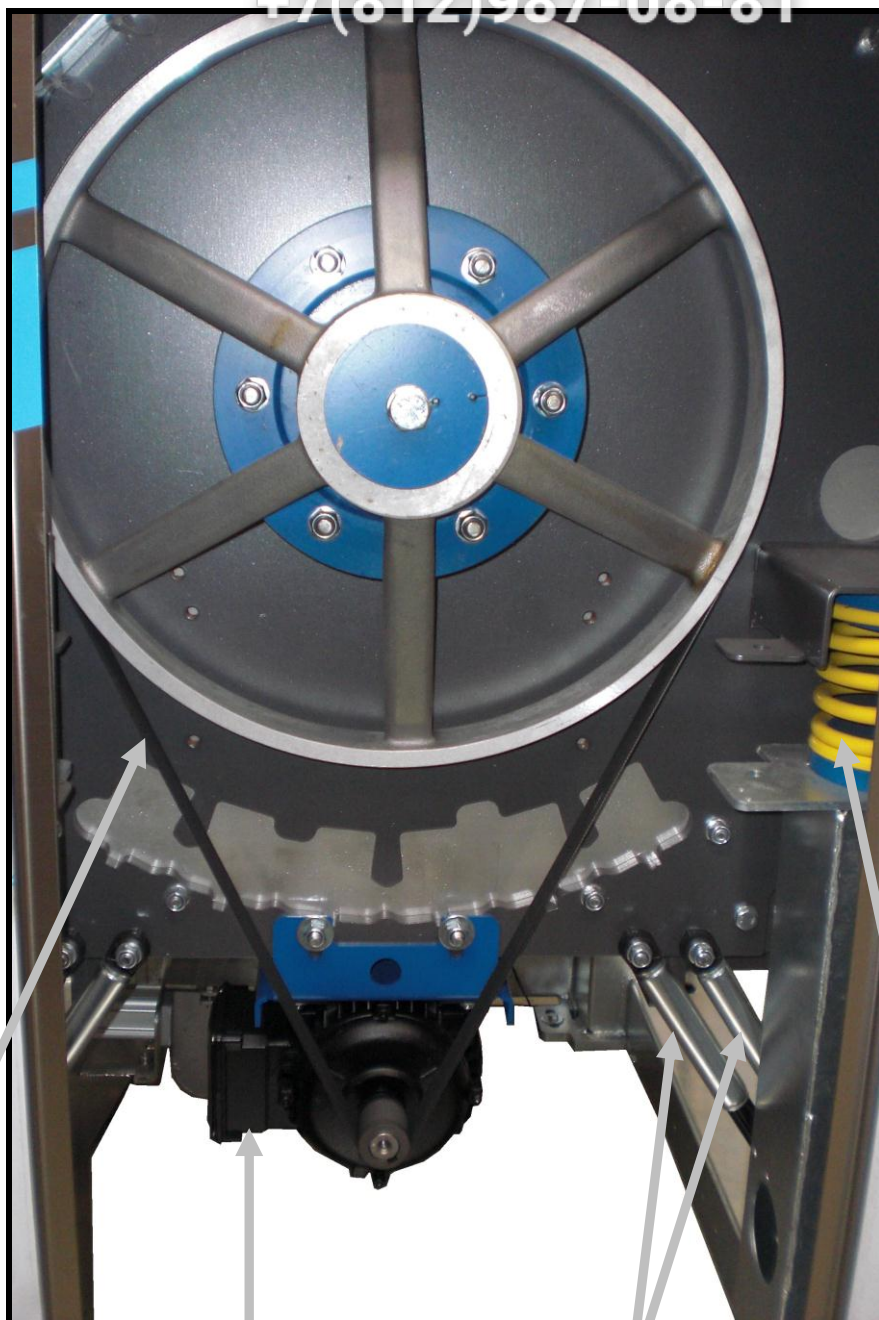
Entlüftungsschlauch /
venting hose
Pos. 15

Zulaufventil Pulverbox /
feed valve powder box
Pos. 16

Zulaufventil /
feed valve
Pos. 17



Faltenbalg /
bellow
Pos. 18



Antriebsriemen /
v-belt
Pos. 19

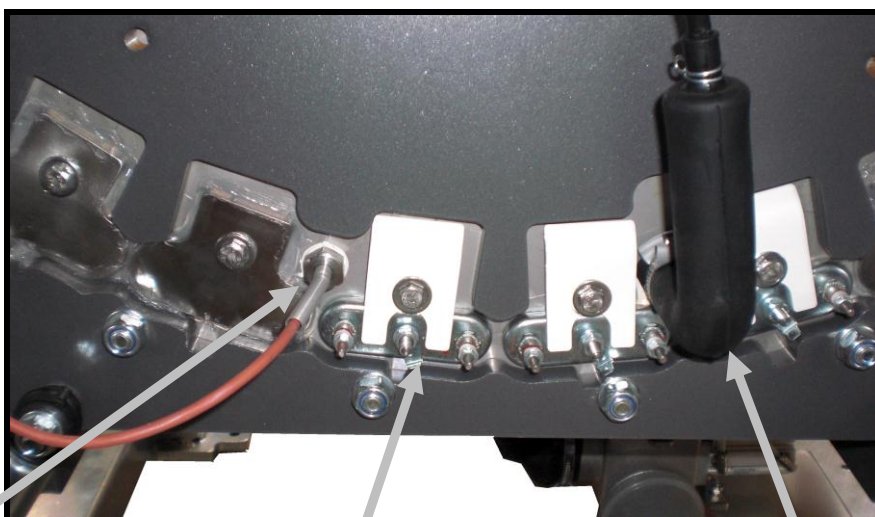
Antriebsmotor /
drive
Pos. 20

Stoßdämpfer /
shock absorber
Pos. 21

Druckfeder /
pressure spring
Pos. 22



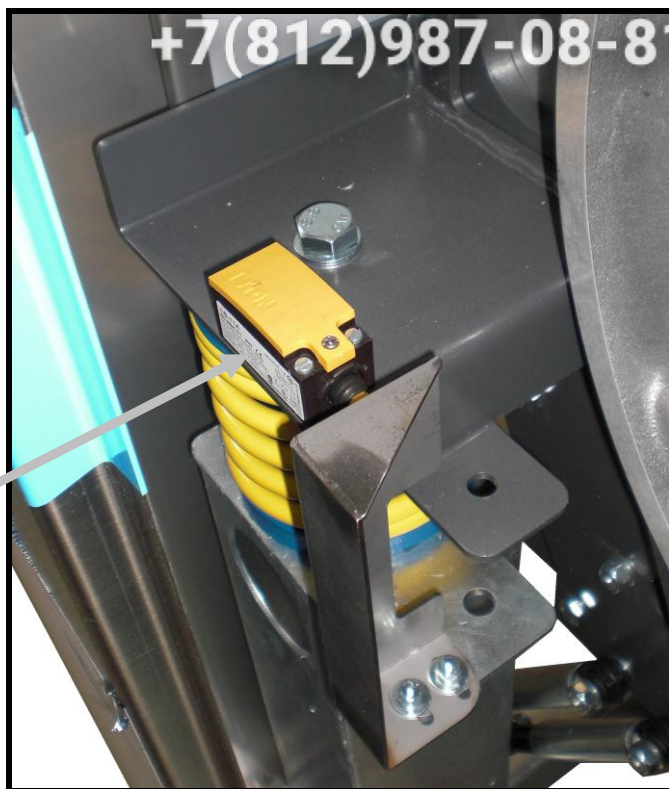
Faltenbalg /
bellow
Pos. 23



Temperatursensor /
temperature sensor
Pos. 24

Heizstab /
heating rod
Pos. 25

Luftfalle /
air trapping
Pos. 26



Unwuchtschalter /
unbalance switch
Pos. 27



Faltenbalg /
bellows
Pos. 28

Ablaufventil /
drain valve
Pos. 29

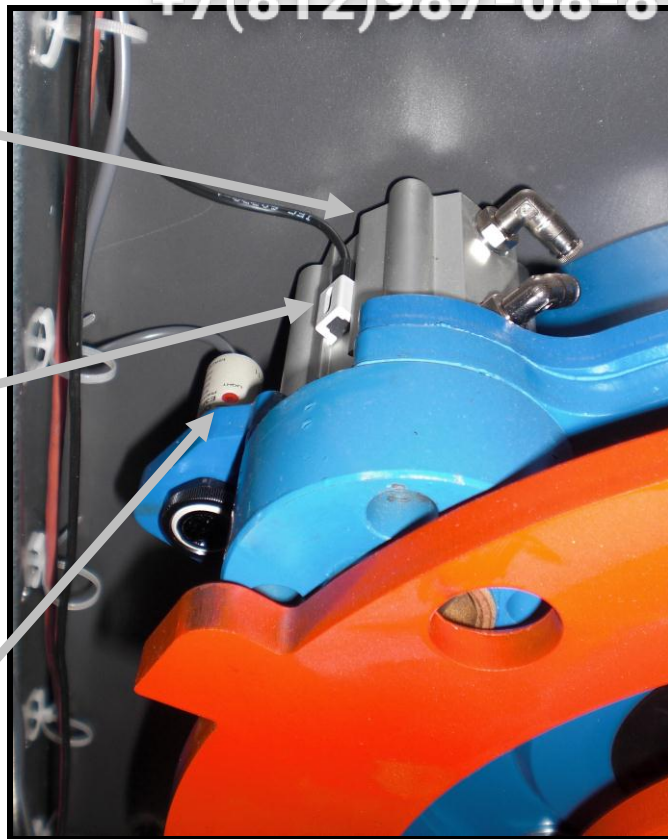
Zylinder f. Ablaufventil /
cylinder f. drain valve
Pos. 30

+7(812)987-08-81

Trommelarretierbolzen /
drum lock bolt
Pos. 31

Sensor f.
Trommelarretierung /
sensor f. drum fixation
Pos. 32

Fotozelle f. Planfahrt/
photo cell f.
positioning run
Pos. 33



Dampfventil /
steam valve
Pos. 34



Bild: Dampfbeheizung / picture: steam heating