

Зип Общепит

vsezip.ru

DESPIECE TECNICO / SPARE PARTS BOM

+7(812)987-08-81

**Hornos a gas
Fours à gaz
Gas ovens
Gas heissluftdämpfer
Forni a gas
Fornos a gás**

Modelos / Models:

**AG-201
ACG-201
APG-201**

Septiembre 2012 September

Revisado Abril 2016 Abril Revised

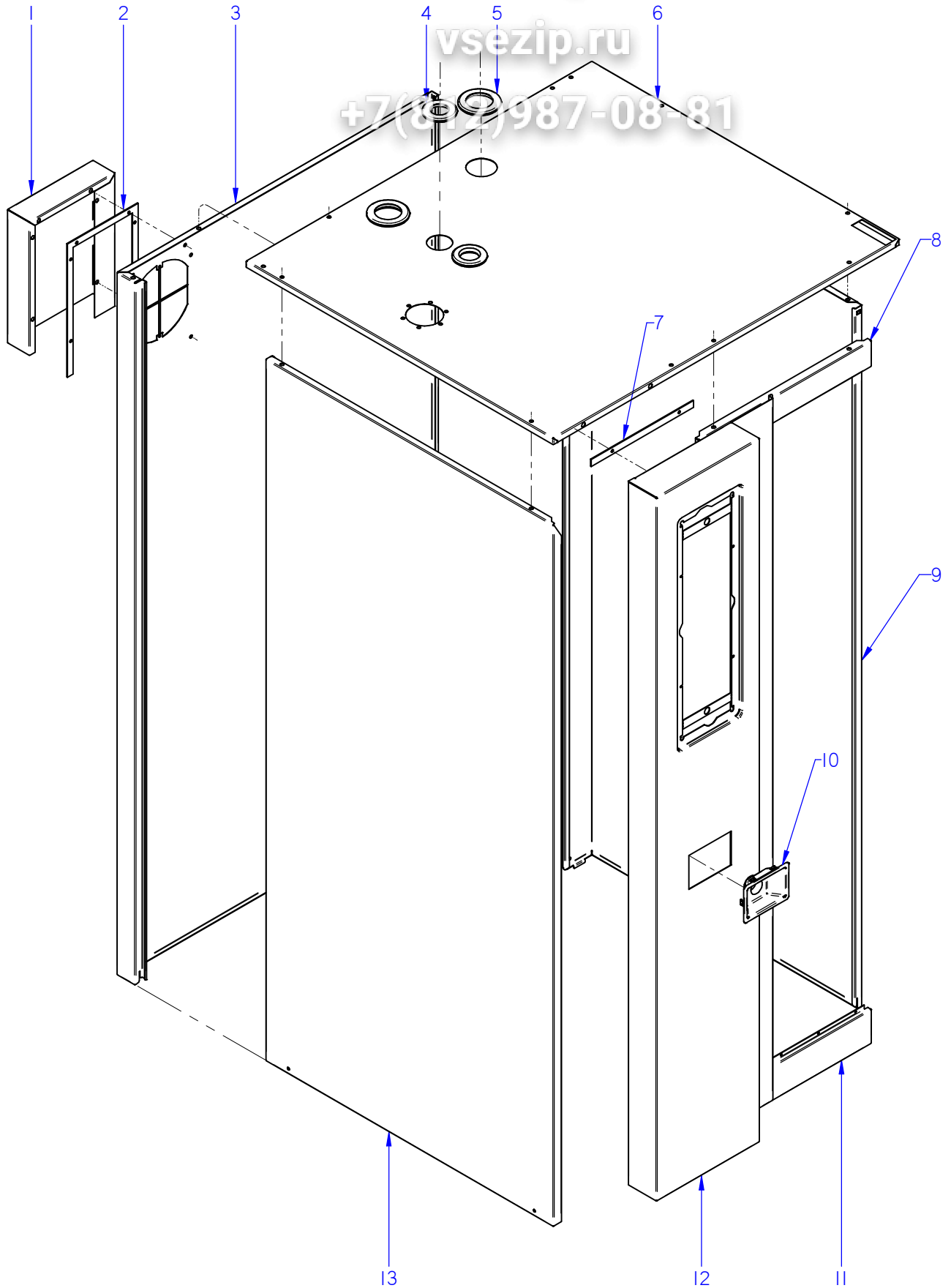


F A G O R I N D U S T R I A L

Зип Общепит

vsezip.ru

+7(812)987-08-81



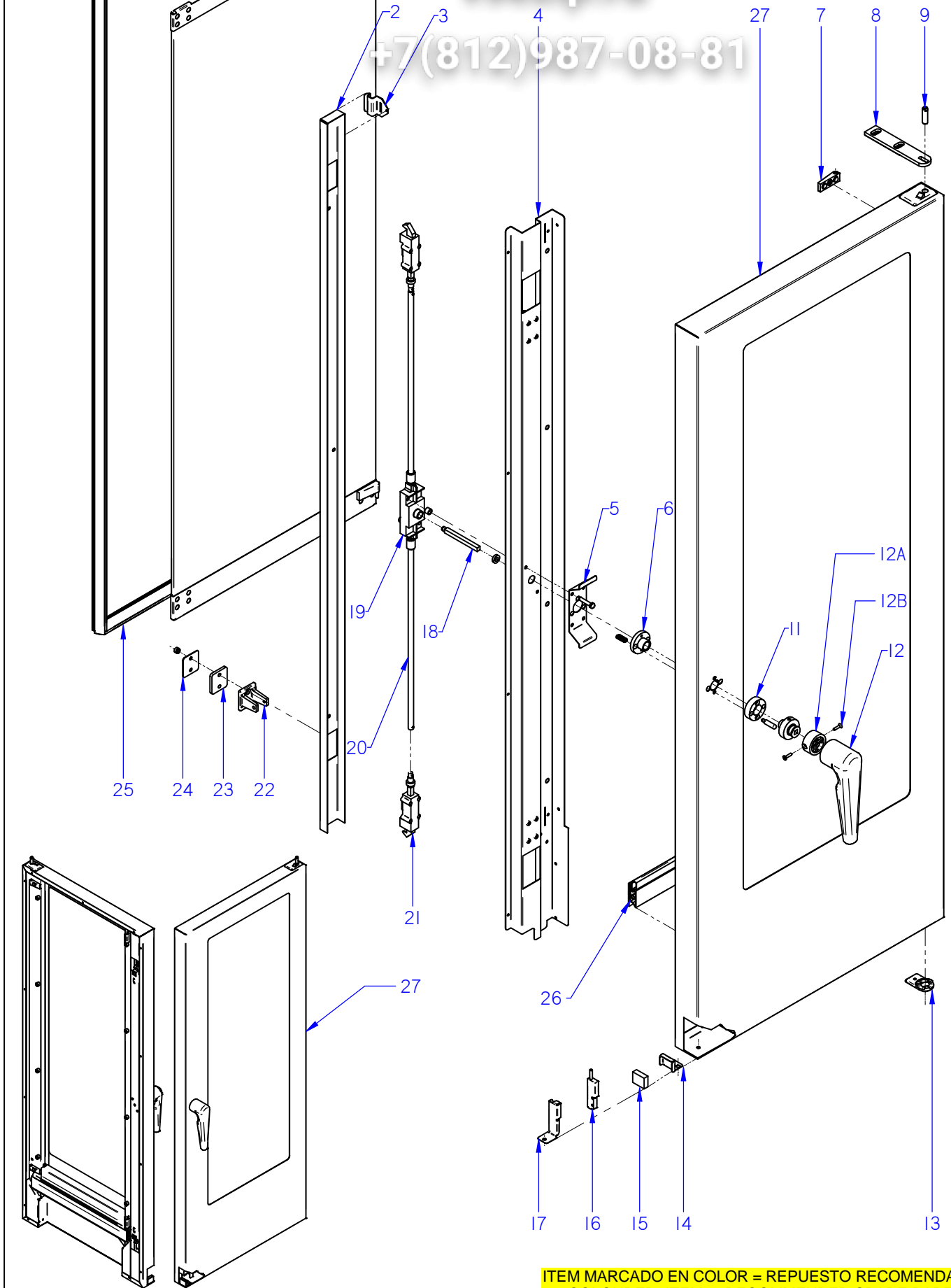
ITEM MARCADO EN COLOR = REPUESTO RECOMENDADO
COLOURED ITEM = RECOMMENDED SPARE PART

| | | | | | | |
|---------------------|--------------------|--------------|------------------------------|---------------|----------------|---------------------------------------|
| Nº plano / N° plane | Firma | Fecha / Date | Denominación / Denomination: | MUEBLE / UNIT | Lamina / Sheet | Fagor Industrial S.Coop. FAGOR |
| C-3072 | <i>(Signature)</i> | 2012-09 | HORNOS AG; ACG; APG-201 | | 1 | Oñate |

Зип Общепит

vsezip.ru

+7(812)987-08-81



ITEM MARCADO EN COLOR = REPUESTO RECOMENDADO
COLOURED ITEM = RECOMMENDED SPARE PART

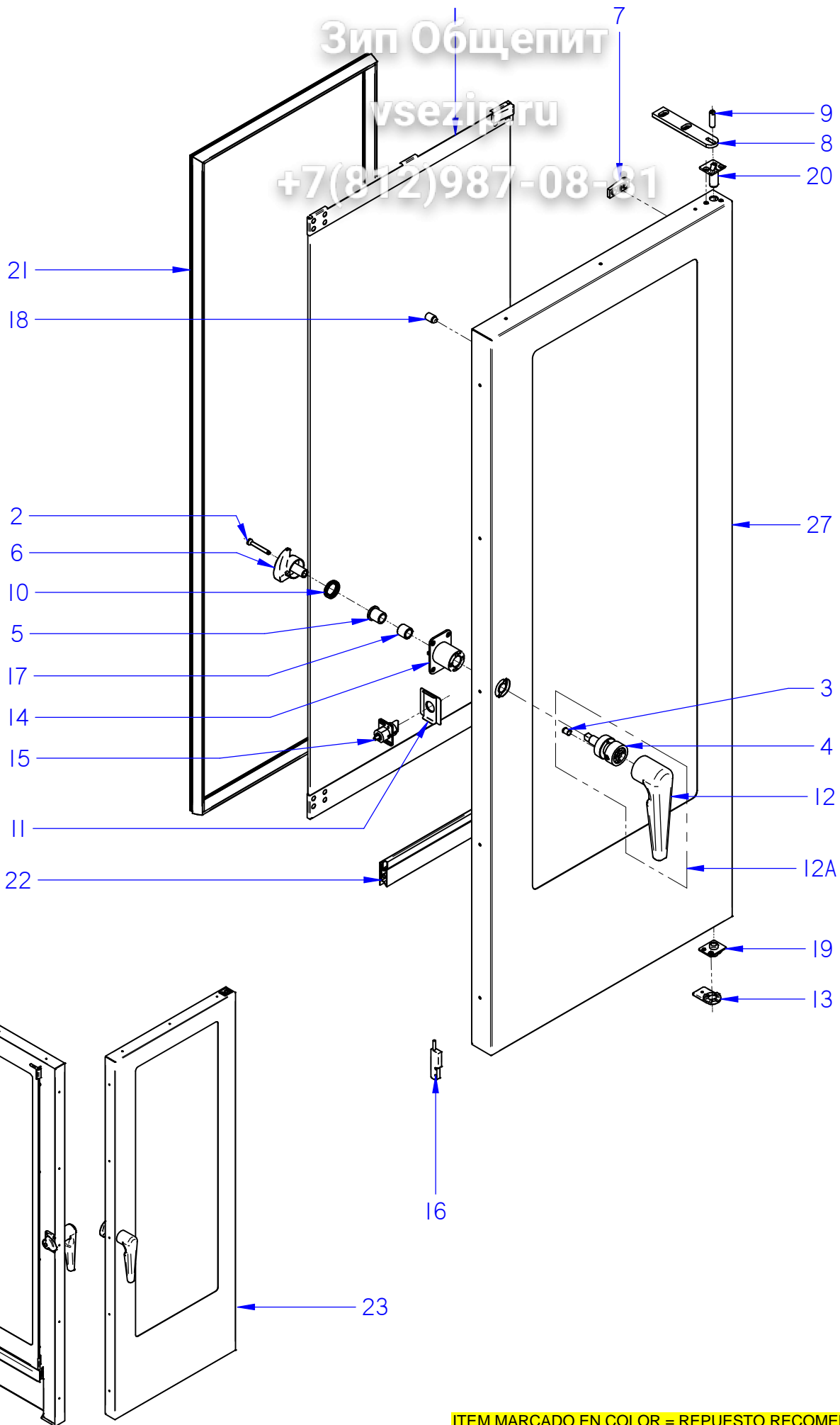
| | | | | | | |
|---------------------|------------------|--------------|------------------------------|---------------|----------------|---------------------------------------|
| Nº plano / N° plane | Firma | Fecha / Date | Denominación / Denomination: | PUERTA / DOOR | Lamina / Sheet | Fagor Industrial S.Coop. FAGOR |
| C-3073 | name (signature) | 2012-09 | HORNOS AG; ACG; APG-201 | | 2 | Oñate |

| MOD. | | HORNOS / OVEN | | ZONA / ZONE | | PUERTA (HASTA 06-2014) / DOOR (UNTIL 06-2014) | | | | | |
|------|------------------|------------------------------|--------------------------|-------------|--------|---|--|--|--|--|--|
| ITEM | CODIGO REFERENCE | DENOMINACION | DENOMINATION | ACG-201 | AG-201 | APG-201 | | | | | |
| 1 | 12041083 | KIT CRISTAL INTER. 201 | 201 INNER GLASS KIT | 1 | 1 | 1 | | | | | |
| 2 | 12039324 | TAPA CIERRE PUERTA 202 | DOOR CLOSING COVER 202 | 1 | 1 | 1 | | | | | |
| 3 | 12024319 | PESTILLO | INNER GLASS HINGE | 2 | 2 | 2 | | | | | |
| 4 | 12039302 | CONTRAPUERTA MANILLA 202 | COMPLETE HANDLE DOOR 202 | 1 | 1 | 1 | | | | | |
| 5 | 12039326 | SUPLEMENTO SUJ. CERRADURA | LOCK FIXING SUPPLEMENT | 1 | 1 | 1 | | | | | |
| 6 | 12024389 | GUIA MANILLA | HANDLE GUIDE | 1 | 1 | 1 | | | | | |
| 7 | 12024402 | BASE DE BISAGRA | HINGE BASE | 2 | 2 | 2 | | | | | |
| 8 | 12039312 | BISAGRA SUPERIOR | UPPER HINGE | 1 | 1 | 1 | | | | | |
| 9 | 12023636 | EJE SUPERIOR | UPPER SHAFT | 1 | 1 | 1 | | | | | |
| 11 | 12024505 | SOPORTE RESORTE | SPRING HOLDER | 1 | 1 | 1 | | | | | |
| 12 | 12044776 | ASA COMPLETA 2/1 ADVANCE | HANDLE 2/1 ADVANCE | 1 | 1 | 1 | | | | | |
| 12A | 12102288 | INSERTO AMARRE | FASTENING INSERT | 1 | 1 | 1 | | | | | |
| 12B | 12010262 | TORNILLO AVELLANADO M4X15 | COUNTERSUNK SCREW M4x15 | 2 | 2 | 2 | | | | | |
| 13 | 12039311 | BASE BISAGRA INFERIOR PUERTA | LOWER DOOR HINGE BASE | 1 | 1 | 1 | | | | | |
| 13 | 12047967 | BASE BISAGRA INFERIOR 6 DIEN | LOWER HINGE BASE | 1 | 1 | 1 | | | | | |
| 14 | 12022049 | SOPORTE IMAN | MAGNET HOLDER | 1 | 1 | 1 | | | | | |
| 15 | 12024384 | IMAN | MAGNET | 1 | 1 | 1 | | | | | |
| 16 | 12024560 | INTERRUPTOR MAGNETICO AC | MAGNETIC SWITCH AC | 1 | 1 | 1 | | | | | |
| 17 | 12022166 | SOPORTE MICRO PUERTA | DOOR MICRO SWITCH | 1 | 1 | 1 | | | | | |
| 18 | 12024799 | EJE DE MANILLA PUERTA | LEVER SHAFT | 1 | 1 | 1 | | | | | |
| 19 | 12024673 | MECANISMO CIERRE | CLOSING MECHANISM | 1 | 1 | 1 | | | | | |
| 20 | 12039308 | TUBO ALARGADERA 201/202 ADV | ROD 201/202 ADV | 2 | 2 | 2 | | | | | |
| 21 | 12024657 | ELEMENTO CIERRE | CLOSING COMPONENT | 2 | 2 | 2 | | | | | |
| 22 | 12024495 | ENGANCHE PUERTA | FASTENER | 2 | 2 | 2 | | | | | |
| 23 | 12024380 | SUPLEMENTO ENGANCHE | FASTENER SUPPLEMENT | 2 | 2 | 2 | | | | | |
| 24 | 12022138 | CALZO DE ENGANCHE | COUPLING CHOCK | 4 | 4 | 4 | | | | | |
| 25 | 12041134 | JUNTA PUERTA COMPL.201 ADV | DOOR JOINT 201 ADV | 1 | 1 | 1 | | | | | |
| 26 | 12041088 | JUNTA CIERRE INFERIOR 201 | LOWER LOCK JOINT 201 | 1 | 1 | 1 | | | | | |
| 27 | 12046022 | KIT PUERTA 201 | DOOR 201 KIT | 1 | 1 | 1 | | | | | |
| | | | | | | | | | | | |
| | | | | | | | | | | | |

Зип Общепит

vsezip.ru

+7(812)987-08-81



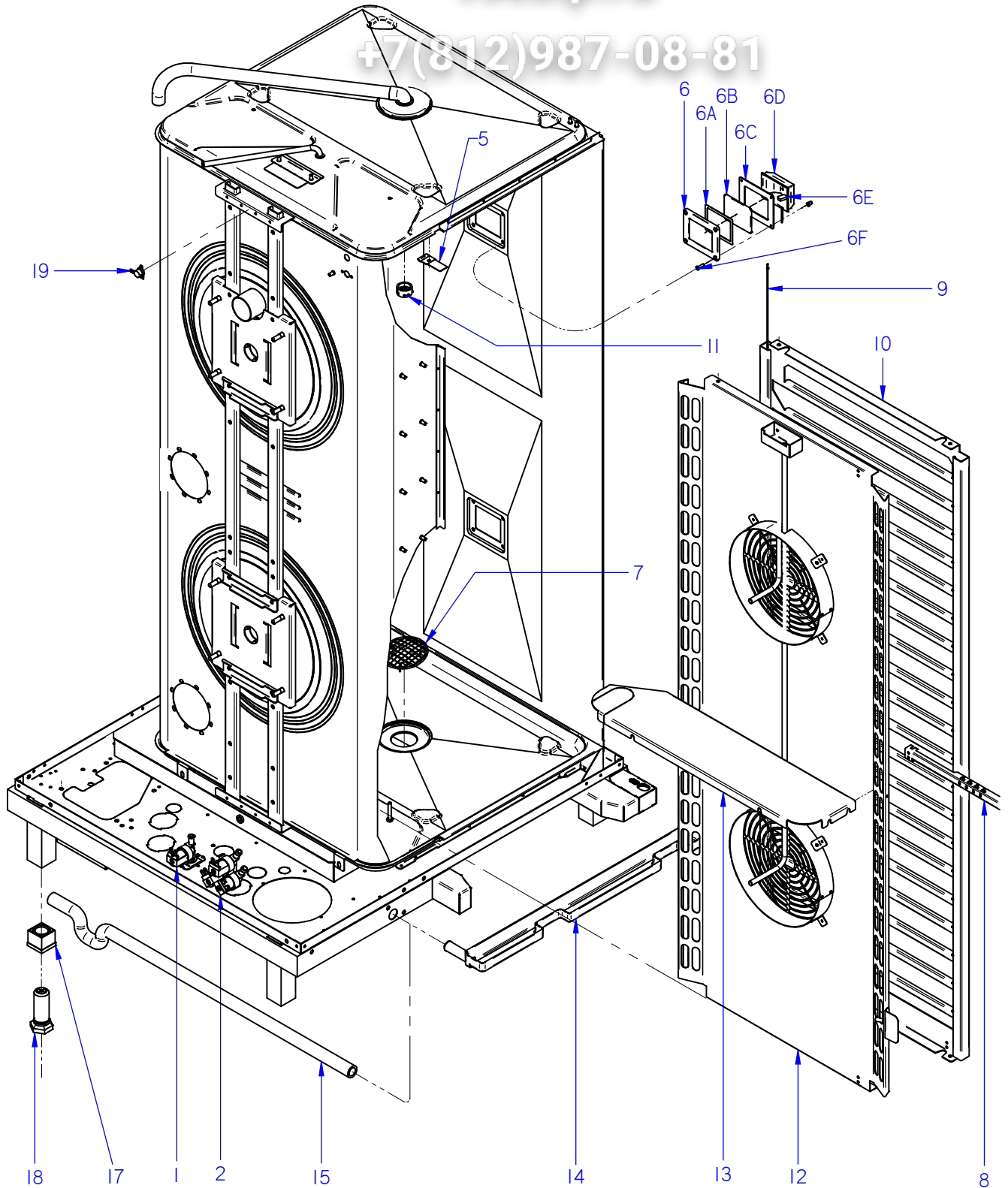
ITEM MARCADO EN COLOR = REPUESTO RECOMENDADO
COLOURED ITEM = RECOMMENDED SPARE PART

| | | | | | |
|-----------------------|-------------------|--------------|--|----------------|---------------------------------------|
| Nº plano / Drawing N. | Firma / Signature | Fecha / Date | Denominación / Denomination: | Lamina / Sheet | Fagor Industrial S.Coop. FAGOR |
| C-3073-14 | Iban R. | 03-2016 | PUERTA / DOOR HORNOS AG; ACG; APG-201 | 2-14 | Oñate |

Зип Ощепит

vsezip.ru

+7(812)987-08-81



ITEM MARCADO EN COLOR = REPUESTO RECOMENDADO
COLOURED ITEM = RECOMMENDED SPARE PART

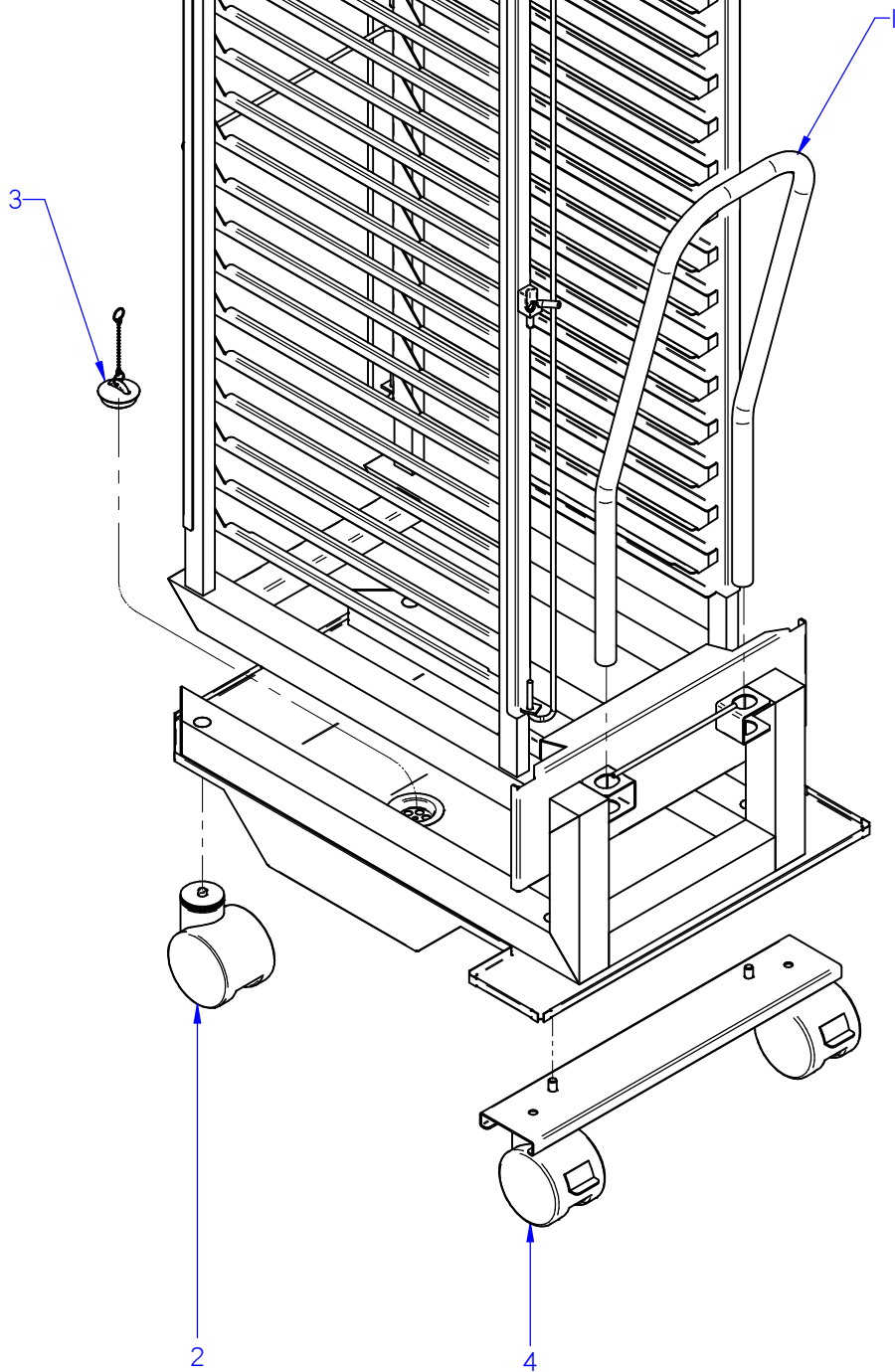
| | | | | | | |
|---------------------|---------|--------------|------------------------------|---------------------------------|----------------|---|
| Nº plano / N° plane | Firma | Fecha / Date | Denominación / Denomination: | MUEBLE INTERIOR / INTERIOR OVEN | Lamina / Sheet | Fagor Industrial S.Coop. FAGOR |
| C-3074 | Iban R. | 03-2015 | HORNOS AG; ACG; APG-201 | 3 | Oñate |  |

| MOD. | | HORNOS / OVEN | | ZONA / ZONE | | MUEBLE INTERIOR / INTERIOR OVEN | | | | | |
|------|---------------------|-----------------------------|----------------------------|-------------|--------|---------------------------------|--|--|--|--|--|
| ITEM | CODIGO REFERENCE | DENOMINACION | DENOMINATION | ACG-201 | AG-201 | APG-201 | | | | | |
| 1 | 12025161 | E.V. 230VAC 50/60Hz 1V | SOLENOID VALVE 230VAC 1 W | 1 | | 1 | | | | | |
| 2 | 12023794 | E.V. 230VAC 50/60Hz 2V | SOLENOID VALVE 230VAC 2 W | 1 | 1 | | | | | | |
| 2 | 12115418 | E.V. 230VAC 50/60Hz 3V | SOLENOID VALVE 230VAC 3 W | | 1 | 1 | | | | | |
| 5 | 12041767 | SOPORTE SONDA PINCHO CAMARA | CAMERA PROBE SUPP. PINCHO | 1 | 1 | 1 | | | | | |
| 6 | 12024464 | MARCO LAMPARA | LAMP ANCHORING PLATEN | 2 | 2 | 2 | | | | | |
| 6A | 12023532 | JUNTA INTERIOR LAMPARA | LAMP INNER JOINT | 2 | 2 | 2 | | | | | |
| 6B | 12023668 | CRISTAL LAMPARA | LAMP GLASS | 2 | 2 | 2 | | | | | |
| 6C | 12023578 | JUNTA EXTERIOR LAMPARA | LAMP OUTER JOINT | 2 | 2 | 2 | | | | | |
| 6D | 12024545 | PORTALAMPARAS | LAMP HOLDER | 2 | 2 | 2 | | | | | |
| 6E | 12025123 | LAMPARA 10W-12V | LIGHT 10W 12V | 2 | 2 | 2 | | | | | |
| 6F | 12010262 | TORNILLO AVELLANADO M4X15 | COUNTERSUNK SCREW M.4x15 | 8 | 8 | 8 | | | | | |
| 7 | 12020331 | FILTRO DESAGÜE 201 | DRAINAGE FILTER 201 | 1 | 1 | 1 | | | | | |
| 7 | 12095042 | FILTRO DESAGÜE Ø53 | DRAINAGE FILTER Ø53 | 1 | 1 | 1 | | | | | |
| 8 | 12126827 | SOPORTE CORE HOLDER | CORE HOLDER SUPPORT | 1 | | | | | | | |
| 9 | 12039490 | TOPE BANDEJAS 101-102 | TRAY TOP 101-102 | 4 | | | | | | | |
| 10 | 12126823 | PORTABANDEJAS IZDA 201 ACG | ACG 201 LEFT HOLDER | 1 | | | | | | | |
| 10 | 12126822 | PORTABANDEJAS DCHA 201 ACG | ACG 201 RIGHT HOLDER | 1 | | | | | | | |
| 11 | 12023935 | PUNTA DIFUSORA LAVADO | WASHING DISPENSER POINT | | | 1 | | | | | |
| 11 | 12129275 | PUNTA DIFUSORA ACLARADO | RINSING DISPENSER POINT | 1 | 1 | | | | | | |
| 12 | 12126836 | CUBREVENTILADOR 201 ADV | FAN COVER 201 ADV | 1 | | | | | | | |
| 12 | 12126837 | CUBREVENTILADOR 201 ADV | FAN COVER 201 ADV | | 1 | 1 | | | | | |
| 13 | 12041119 | CHAPA REFUERZO CUBA AE 201 | CUBA REINFOR. PLATE AE 201 | 1 | 1 | 1 | | | | | |
| 14 | 12039467 | RECOGEAGUAS HORNO 201 | SPRING WATER COLLE. 201 | 1 | | | | | | | |
| 15 | 12039498 | TUBO RECOGEAGUAS 101 | COLLECT WATER PIPE 101 | 1 | | | | | | | |
| | 12009628 | ABRAZADERA ELAST. 26.7-28.1 | SPRING CLAMP 26.7-28.1 | 2 | | | | | | | |
| 17 | 12043392 | TUERCA PATA 202 ADVANCE | NUT LEG 202 ADVANCE | 4 | 4 | 4 | | | | | |
| 18 | 12043393 | TORNILLO PATA 202 ADVANCE | SCREW LEG 202 ADVANCE | 4 | 4 | 4 | | | | | |
| 19 | 12095019 | TERMOSTATO_261_NA_51°C | THERMOSTAT_261_NA_51°C | 1 | 1 | | | | | | |
| | | | | | | | | | | | |
| | | | | | | | | | | | |
| | | | | | | | | | | | |

Зип Общепит

ysezip.ru

+7(812)987-08-81



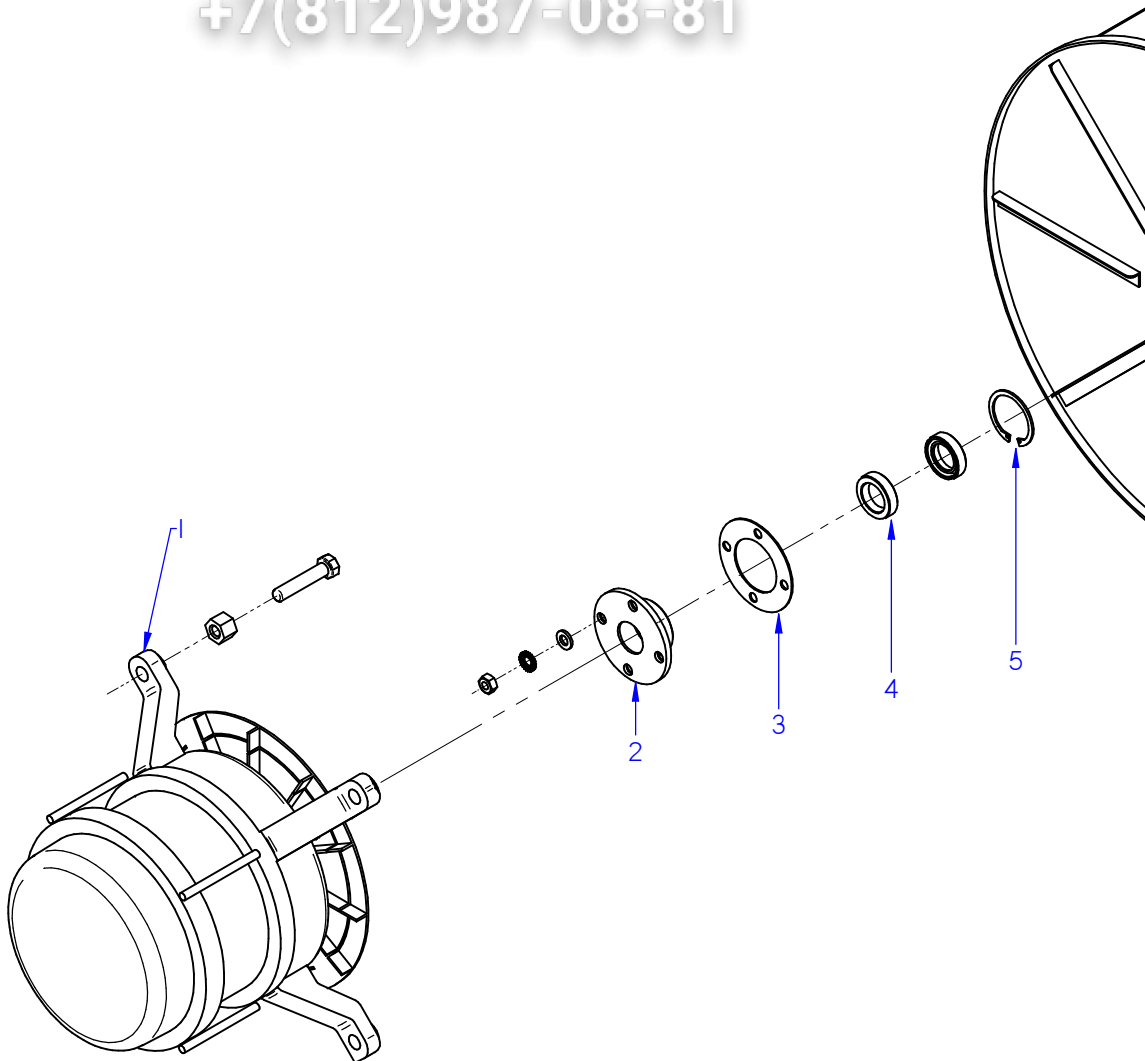
ITEM MARCADO EN COLOR = REPUESTO RECOMENDADO
COLOURED ITEM = RECOMMENDED SPARE PART

| | | | | | | |
|---------------------|--------|--------------|------------------------------|-----------------|----------------|---|
| Nº plano / N° plane | Firma | Fecha / Date | Denominación / Denomination: | CARRO / TROLLEY | Lamina / Sheet | Fagor Industrial S.Coop. FAGOR |
| C-3075 | Iban R | 06-2015 | HORNOS AG; APG-201 | 4 | Oñate |  |

Зип Общепит

vsezip.ru

+7(812)987-08-81



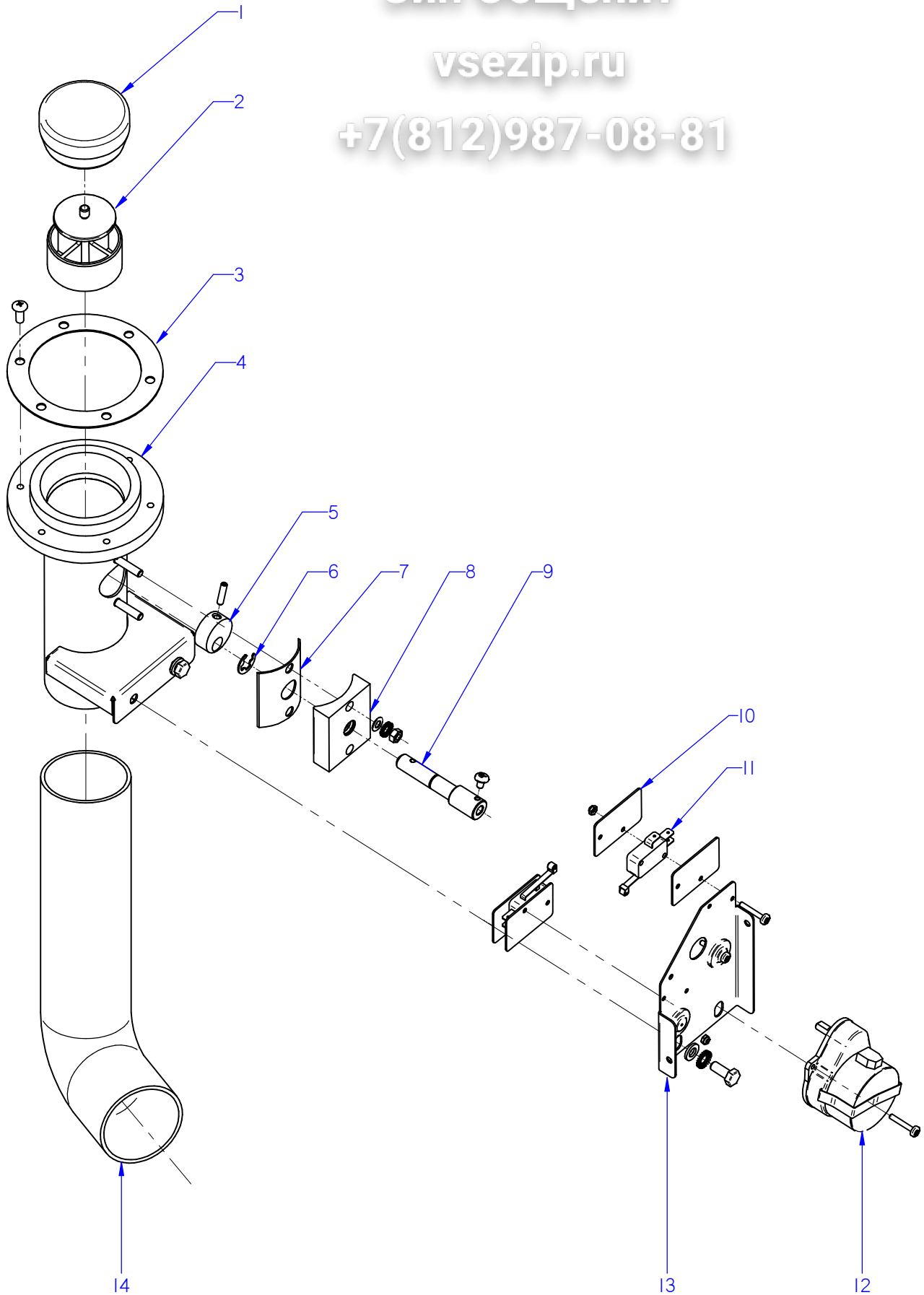
ITEM MARCADO EN COLOR = REPUUESTO RECOMENDADO
COLOURED ITEM = RECOMMENDED SPARE PART

| | |
|--------------------------------------|--|
| Nº plano / N° plane C-3076 | Firma <i>(Signature)</i> |
| Fecha / Date 2012-09 | Denominación / Denomination: HORNOS AG; ACG; ARG-201 |
| Lamina / Sheet 5 | Fagor Industrial S.Coop. FAGOR Onste |

Зип Общепит

vsezip.ru

+7(812)987-08-81



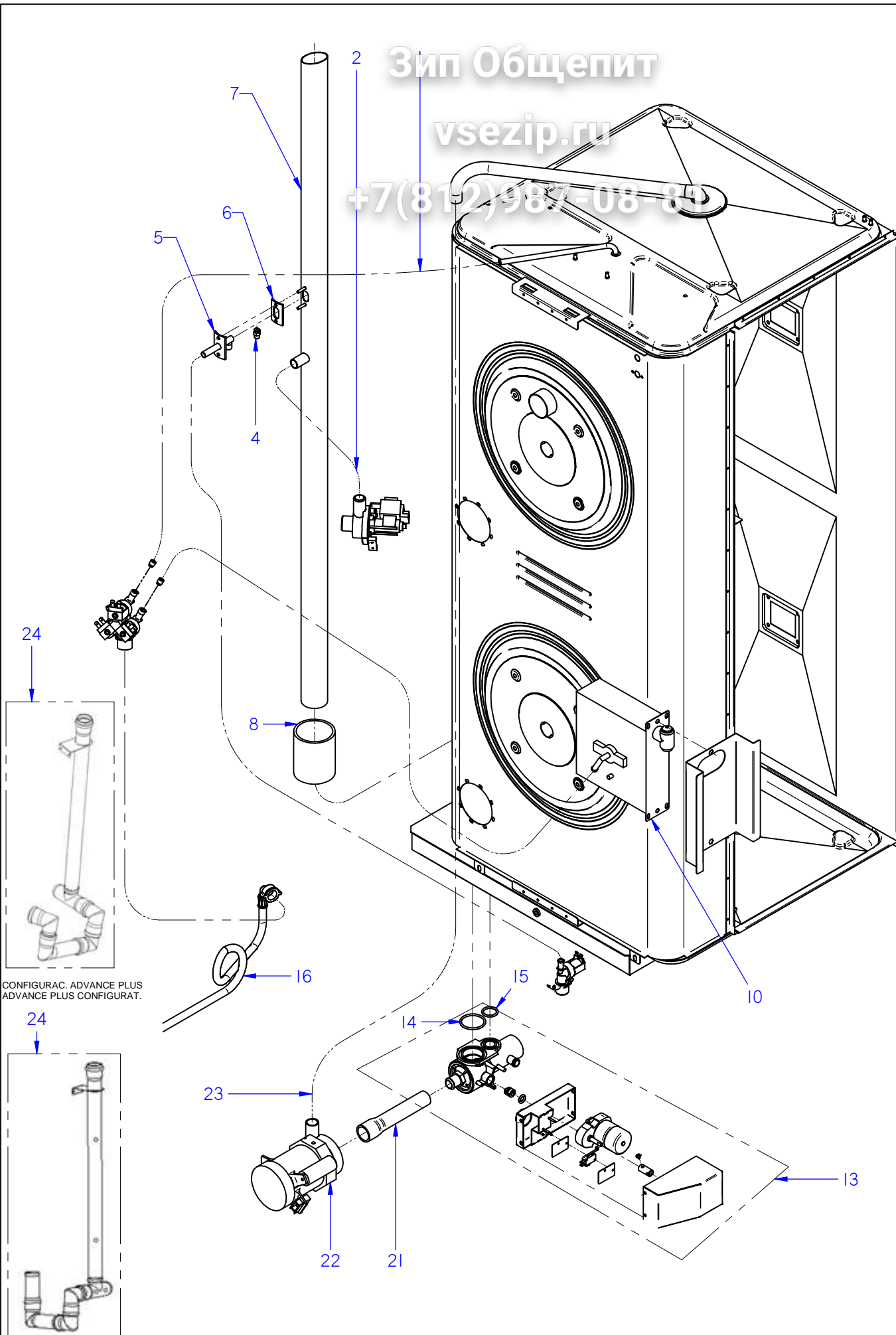
ITEM MARCADO EN COLOR = REPUESTO RECOMENDADO
COLOURED ITEM = RECOMMENDED SPARE PART

| | | | | | |
|---------------------|--------------------|--------------|--|----------------|---------------------------------------|
| Nº plano / N° plane | Firma | Fecha / Date | Denominación / Denomination: CHIMENEA / FLUEPIPE | Lamina / Sheet | Fagor Industrial S.Coop. FAGOR |
| C-3077 | <i>(Signature)</i> | 2012-09 | HORNOS AG; ACG; APG-201 | 6 | Oñate |

Зип Общепит

vsezip.ru

+7(812)987-08-89



CONFIGURAC. ADVANCE PLUS
ADVANCE PLUS CONFIGURAT.

CONFIGURAC. ADVANCE / CONCEPT
ADVANCE / CONCEPT CONFIGURAT.

ITEM MARCADO EN COLOR = REPUESTO RECOMENDADO
COLOURED ITEM = RECOMMENDED SPARE PART

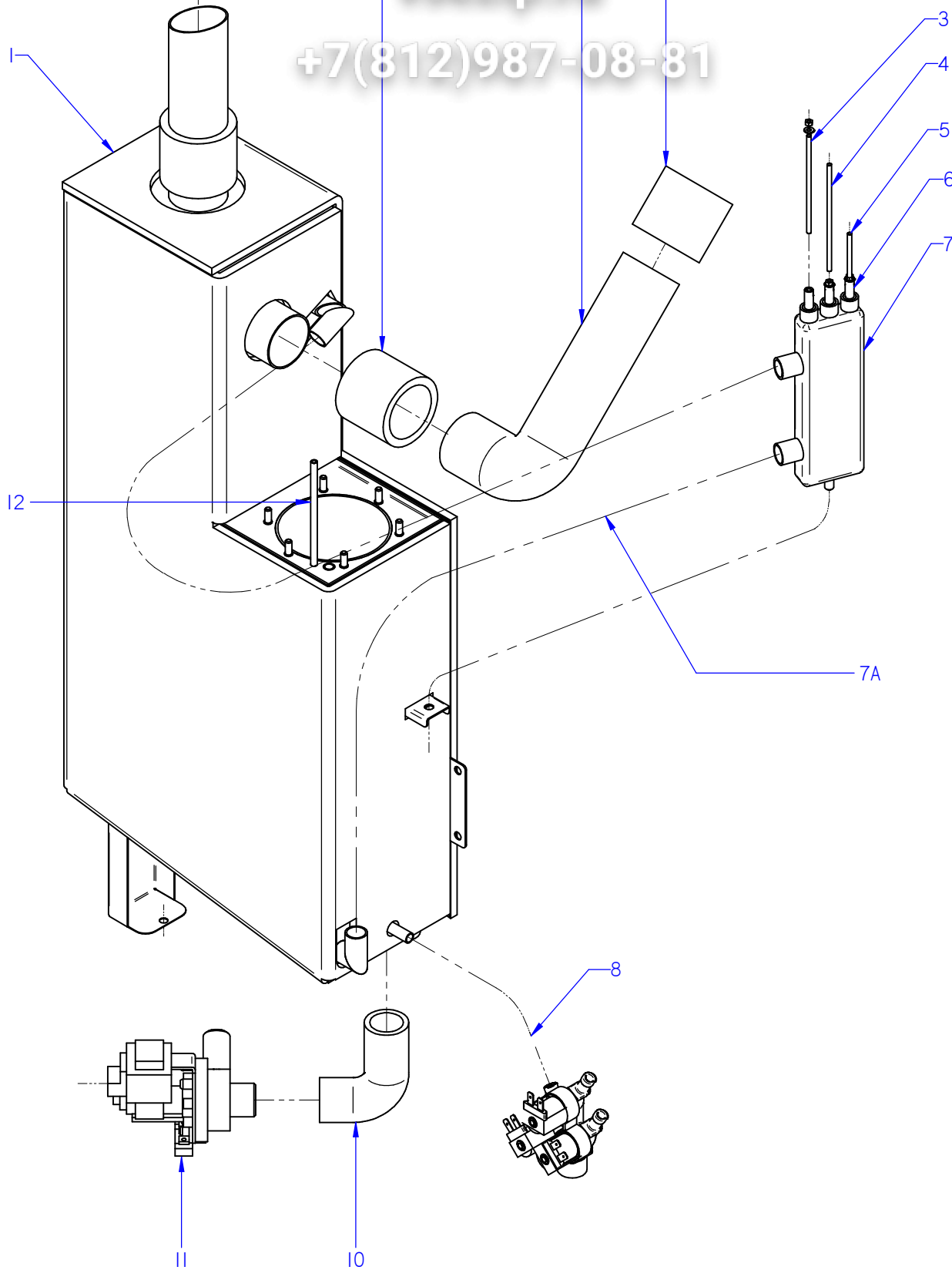
| | | | | | | |
|---------------------|---------|--------------|------------------------------|------------------------------------|----------------|---------------------------------------|
| Nº plano / N° plane | Firma | Fecha / Date | Denominación / Denomination: | CONDUCCIONES DE AGUA / WATER PIPES | Lamina / Sheet | Fagor Industrial S.Coop. FAGOR |
| C-3078 | Iban R. | 03-2016 | HORNOS AG; ACG; APG-201 | | 7 | Oñate |

| MOD. | | HORNOS / OVEN | | ZONA / ZONE | | CONDUCCIONES DE AGUA / WATER PIPE | | | | | |
|------|------------------|-----------------------------|-------------------------------|-------------|--------|-----------------------------------|--|--|--|--|--|
| ITEM | CODIGO REFERENCE | DENOMINACION | DENOMINATION | ACG-201 | AG-201 | APG-201 | | | | | |
| 1 | 11000083 | T. GOMA NEGRA Ø17*10 | BLACK RUBBER PIPE Ø17*10 | 3 | 3 | 3 | | | | | |
| | 12010036 | ABRAZADERA 12*20 | CLAMP 12-20 | 6 | 10 | 8 | | | | | |
| 2 | 11000157 | TUBO SILIC. ALTA Tª D26*18 | HIGH TEMP. SILIC. HOSE D26*18 | - | 2 | 2 | | | | | |
| | 12009628 | ABRAZAD. ELASTICA 26,7*28,1 | ELAST. CLAMP 26,7*28,1 | - | 1 | 1 | | | | | |
| 4 | 12024000 | TOBERA 1/8 | NOZZLE 1/8 | 1 | 1 | 1 | | | | | |
| 4 | 12049131 | BOQUILLA 1/8M-B-1-3 | INJECTOR 1/8M-B-1-3 | 1 | 1 | 1 | | | | | |
| 5 | 12039468 | CONDUCC. VAHOS COMPLETO | COMPLETE VAPOUR DUCT | 1 | 1 | 1 | | | | | |
| 6 | 12023605 | JUNTA TUBO INYECTOR | INJECTOR PIPE SEAL | 1 | 1 | 1 | | | | | |
| 7 | 12043995 | CHIMENEA COMPLETA 201 ACE | COMPL. FLUEPIPE 201 ACE | 1 | - | - | | | | | |
| 7 | 12041127 | CHIMENEA COMPLETA 201 ADV | COMPLET FLUEPIPE 201 ADV | - | 1 | 1 | | | | | |
| 8 | 12047901 | EMPALME SILICONA Ø53 | SILICONE JOINT Ø53 | 1 | 1 | 1 | | | | | |
| | 12007943 | ABRAZADERA ELASTICA 62*66 | ELAST. CLAMP 62*66 | 2 | 2 | 2 | | | | | |
| 10 | 12040977 | DUCHA | SHOWER | - | 1 | 1 | | | | | |
| 13 | 12126816 | KIT VALVULA DESAGUE ADVAN. | VALVE DRAIN ADVANCE KIT | - | - | 1 | | | | | |
| 14 | 12010081 | JUNTA TORICA Ø52X3,5 | O-RING Ø52X3.5 | - | - | 1 | | | | | |
| 15 | 12010131 | JUNTA TORICA Ø33x3,5 | O-RING Ø33x3.5 | - | - | 1 | | | | | |
| 16 | 12025198 | MANGUERA ENTRADA AGUA | WATER INLET HOSE | 1 | 1 | 1 | | | | | |
| 21 | 12024407 | GOMA VALVULA BOMBA GAS | PUMP VALVE RUBBER | - | - | 1 | | | | | |
| | 12010023 | ABRAZADERA 20-32 | CLAMP 20-32 | - | - | 1 | | | | | |
| | 12009997 | ABRAZADERA 25-40 | CLAMP 25-40 | - | - | 1 | | | | | |
| 22 | 12024782 | MOTOBOMBA 230V AC 1N 50Hz | MOTOR 230V AC 1N 50Hz 74,6 | - | - | 1 | | | | | |
| S/Nº | 12024463 | CONDENSADOR ELEC. 250V VDE | CONDENSER ELEC. 250V VDE | 1 | 1 | 1 | | | | | |
| 23 | 11000005 | TUBO SILIC. ALTA Tª D31*23 | HIGH TEMP. SILIC. HOSE D31*23 | - | - | 2 | | | | | |
| 24 | 12047404 | MOD CONJUNTO DESAGUE ADV | ADV DRAIN SET MODEL | 1 | 1 | 1 | | | | | |
| | | | | | | | | | | | |
| | | | | | | | | | | | |
| | | | | | | | | | | | |
| | | | | | | | | | | | |
| | | | | | | | | | | | |
| | | | | | | | | | | | |
| | | | | | | | | | | | |

Зип Общелит

vsezip.ru

+7(812)987-08-81



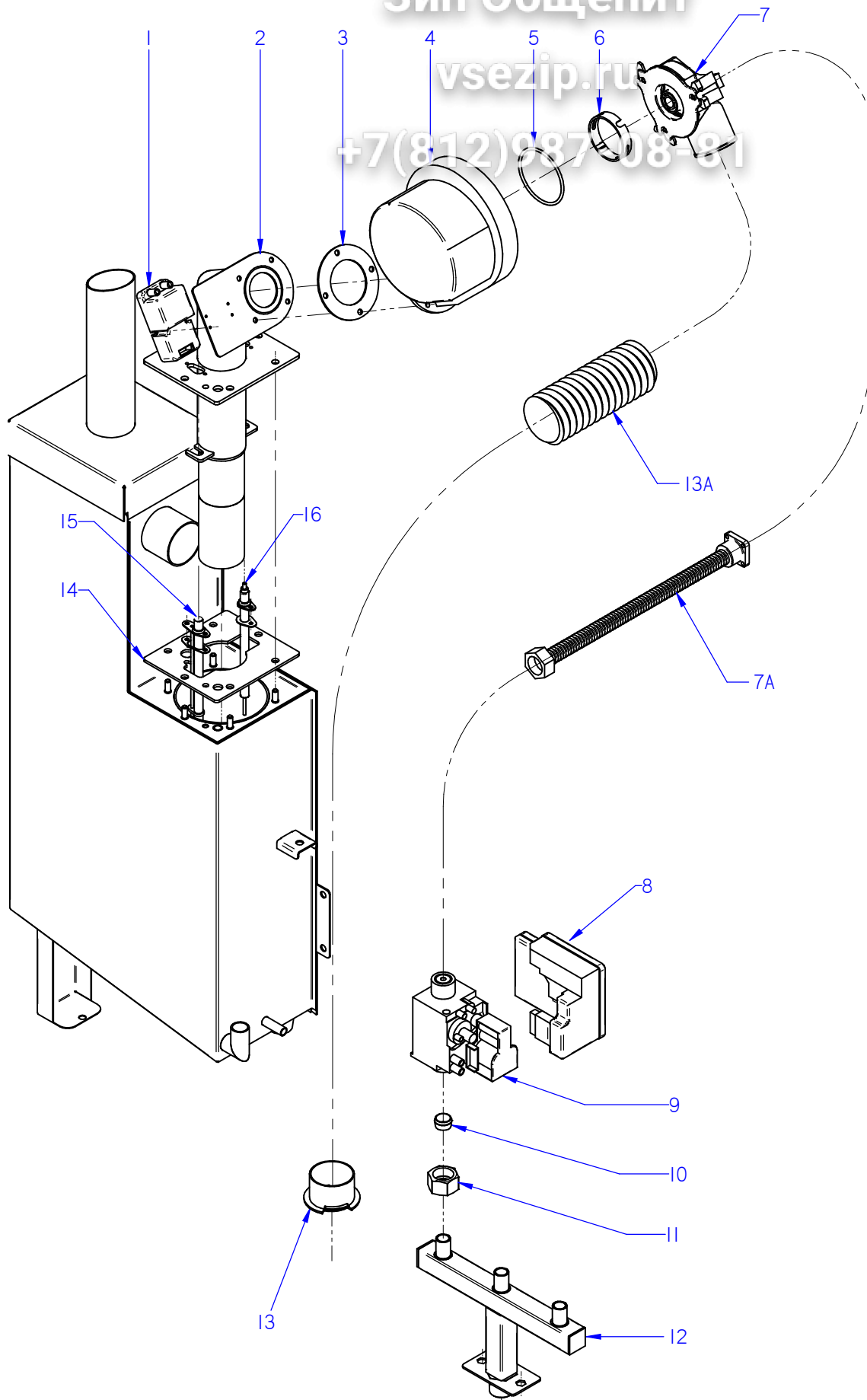
ITEM MARCADO EN COLOR = REPUESTO RECOMENDADO
COLOURED ITEM = RECOMMENDED SPARE PART

| | | | | | | |
|---------------------|--------------------|--------------|------------------------------|-----------------------------------|----------------|---------------------------------------|
| Nº plano / N° plane | Firma | Fecha / Date | Denominación / Denomination: | CIRCUITO DE VAPOR / STEAM CIRCUIT | Lamina / Sheet | Fagor Industrial S.Coop. FAGOR |
| C-3079 | <i>(Signature)</i> | 04-2016 | HORNOS AG; APG-201 | 8 | Oñate | |

Зип Общежит

vsezip.ru

+7(812)987-008-81



ITEM MARCADO EN COLOR = REPUESTO RECOMENDADO
COLOURED ITEM = RECOMMENDED SPARE PART

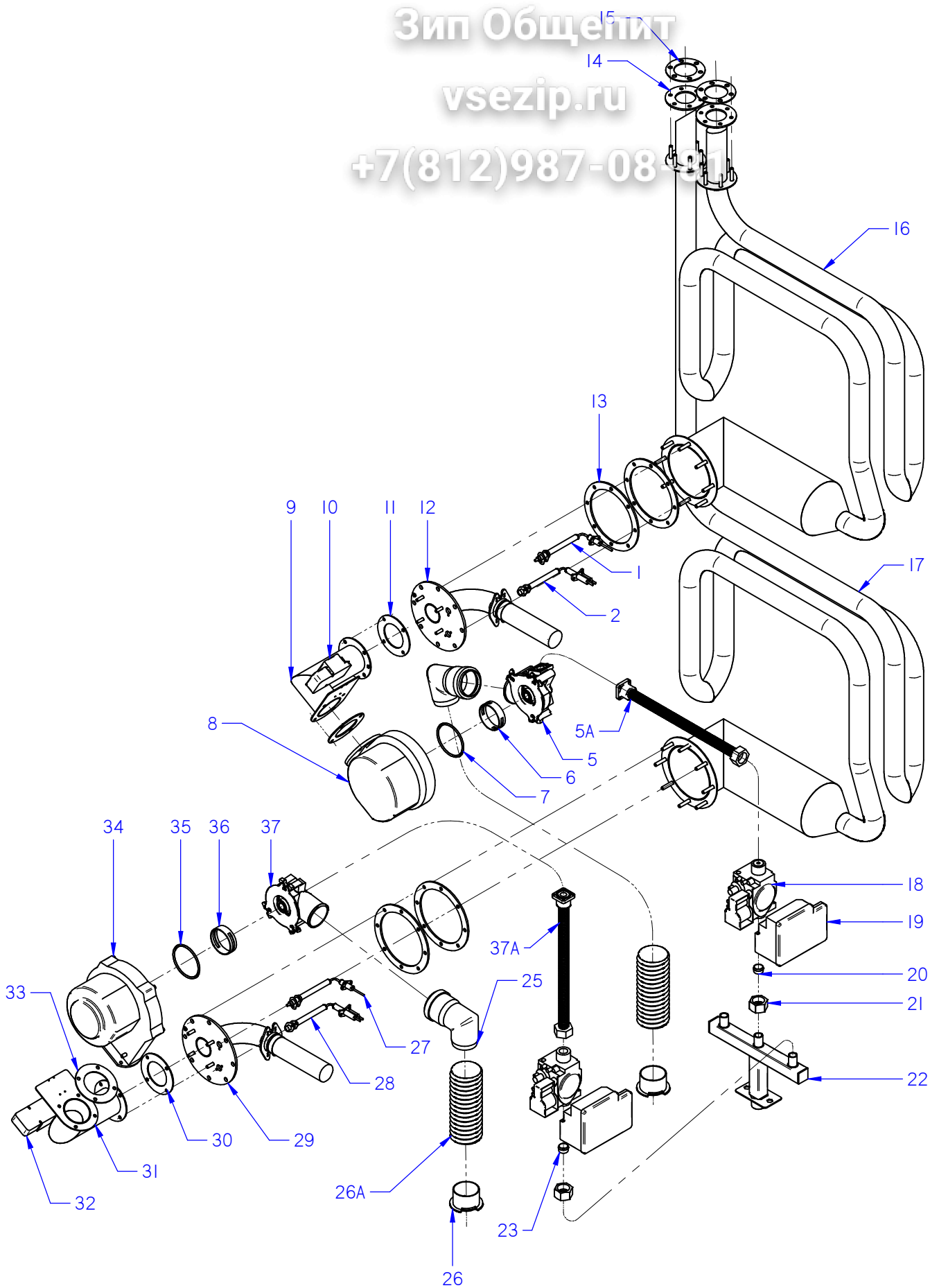
| | | | | | |
|---------------------|-------------------|--------------|---|----------------|---------------------------------------|
| Nº plano / N° plane | Firma / Signature | Fecha / Date | Denominación / Denomination: FUNC. GAS GENERADOR / FUNCT. GAS GENERATOR | Lamina / Sheet | Fagor Industrial S.Coop. FAGOR |
| C-3080 | Iban R. | 2014-09 | HORNOS AG; APG-201 | 9 | Oñate |

| MOD. | | HORNOS / OVEN | | ZONA / ZONE | | FUNCIONAL GAS GENERADOR FUNCTIONAL GAS GENERATOR | | | | | |
|------|---------------------|------------------------------|-----------------------------|-------------|---------|---|--|--|--|--|--|
| ITEM | CODIGO REFERENCE | DENOMINACION | DENOMINATION | AG-201 | APG-201 | | | | | | |
| 1 | 12039544 | CHISPA BRAHMA | BRAHMA SPARK | 1 | 1 | | | | | | |
| 2 | 12044424 | QUEMADOR GENERADOR 201G | BURNER GENERATOR 201G | 1 | 1 | | | | | | |
| 3 | 12045252 | JUNTA ACOP.SOPLANTE GRAFITO | JOINT COJ. GRAPHITE BLOWER | 1 | 1 | | | | | | |
| 4 | 12044607 | SOPLANTE NRG 118 55kw | BLOWER NRG 118 55kw | 1 | 1 | | | | | | |
| 5 | 12009940 | JUNTA TORICA114x3 | O-RING 114x3 | 1 | 1 | | | | | | |
| 6 | 12044292 | ARO VENTURI VERDE | GREEN RING VENTURI | 1 | 1 | | | | | | |
| 7 | 12039540 | MIXER COMPLETO | MIXER COMPLETE | 1 | 1 | | | | | | |
| S/Nº | 12041612 | JUNTA TORICA 63X3 | O-RING 63X3 | 1 | 1 | | | | | | |
| 7A | 12040731 | TUBO GAS FLEXIBLE 900-90º | FLEXIBLE GAS PIPE 900-90º | 1 | 1 | | | | | | |
| 8 | 12039440 | CAJA CONTROL DBC 579 | DBC CONTROL BOX 579 | 1 | 1 | | | | | | |
| 9 | 12046364 | VALVULA REGUL 50HZ ADV | ADV 50HZ VALVE CONTROLL. | 1 | 1 | | | | | | |
| 9 | 12046365 | VALVULA REGUL 60HZ ADV | ADV 60HZ VALVE CONTROLL. | 1 | 1 | | | | | | |
| 10 | 12045672 | TOBERA Ø 5,4 BP | NOZZLE Ø 5,4 BP | 1 | 1 | | | | | | |
| 10 | | GN (SIN INYECTOR) | (WITHOUT INJECTOR)GN | 1 | 1 | | | | | | |
| 11 | 12048850 | TUERCA G 3/4 | NUT G 3/4 | 1 | 1 | | | | | | |
| 12 | 12041051 | ENTRADA GAS CO. ADV 202 SUB | ADV GAS INLET ADV 202 SUB | 1 | 1 | | | | | | |
| S/Nº | 12008775 | BICONO Ø16 | BICONE Ø16 | 1 | 1 | | | | | | |
| 13 | 12039679 | AMARRE TUBOS AIRE | MOORING PIPES AIR | 1 | 1 | | | | | | |
| 13A | 11000232 | TUBO AIRE VULCANO PUZ 50 | AIR TUBE VULCANO PUZ 50 | 1 | 1 | | | | | | |
| 14 | 12044286 | JUNTA QUEMADOR GENERA 102 | GENERATOR GASKET BURNER | 1 | 1 | | | | | | |
| 15 | 12039430 | BUJIA GENERADOR 202 | PLUG GENERATOR 202 | 1 | 1 | | | | | | |
| S/Nº | 12039587 | JUNTA BUJIA GENERADOR 06/101 | PLUG BOARD GENERATOR 06/101 | 1 | 1 | | | | | | |
| | 12010244 | TUERCA EXAGONAL M4 LATON | HEXAGONAL NUT M4 BRASS | 2 | 2 | | | | | | |
| 16 | 12039431 | DETECTOR GENERADOR 202 | GENERATOR SENSOR 202 | 1 | 1 | | | | | | |
| S/Nº | 12039450 | JUNTA BUJIA CONVECCION 102 | SPARK CONVECTI. BOARD 102 | 1 | 1 | | | | | | |
| | | | | | | | | | | | |
| | | | | | | | | | | | |
| | | | | | | | | | | | |
| | | | | | | | | | | | |
| | | | | | | | | | | | |

Зип Обществ

vsezip.ru

+7(812)987-08-91



ITEM MARCADO EN COLOR = REPUESTO RECOMENDADO
 COLOURED ITEM = RECOMMENDED SPARE PART

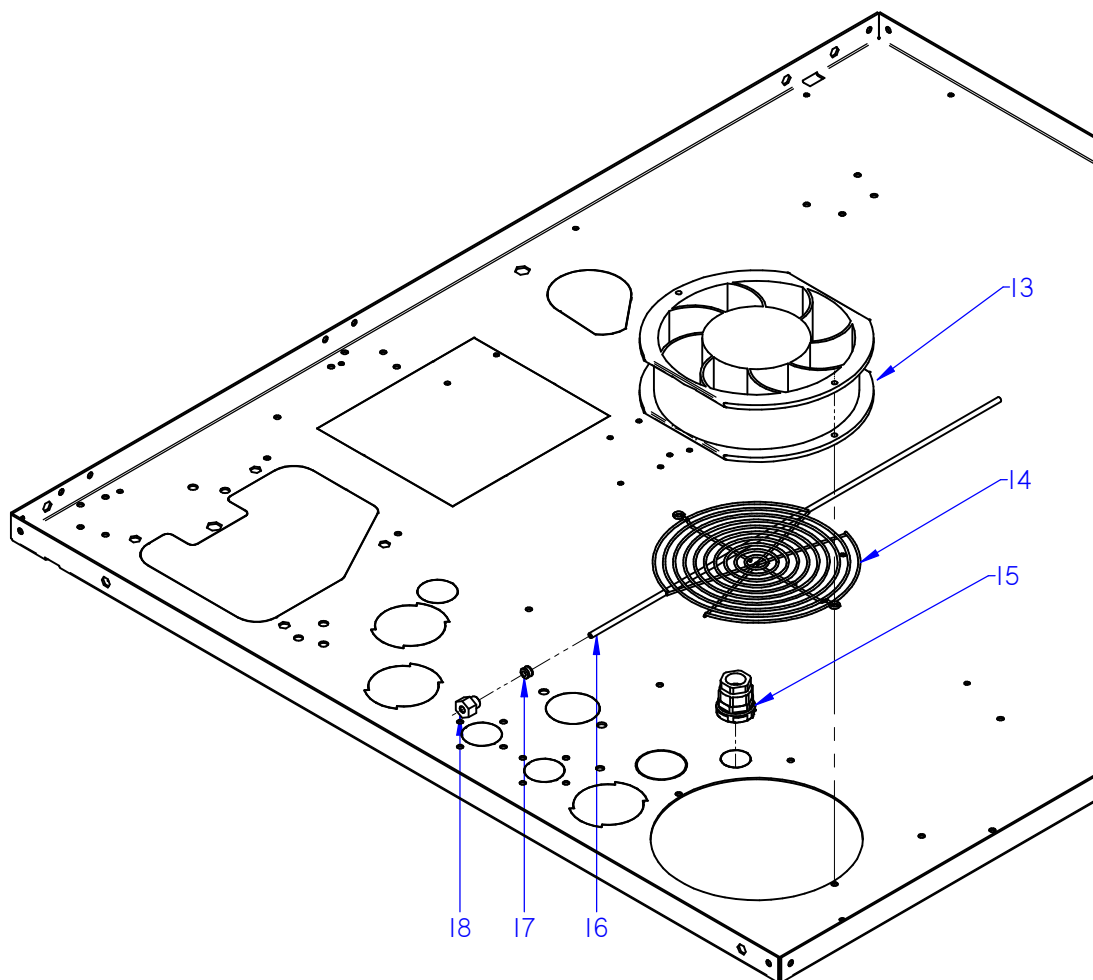
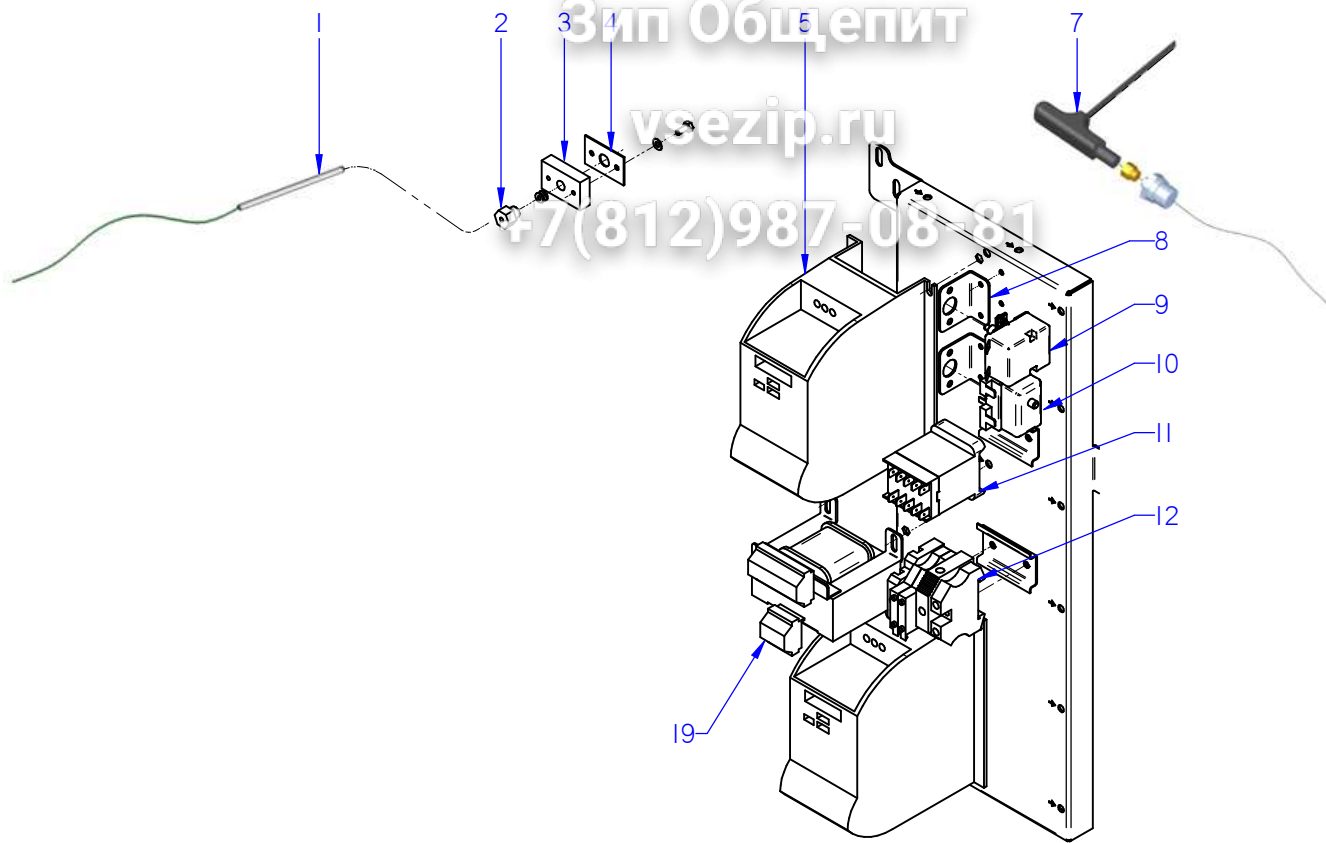
| | | | | | |
|---------------------|---------|--------------|---|----------------|---------------------------------------|
| Nº plano / N° plane | Firma | Fecha / Date | Denominación / Denomination: FUNC. GAS CONVECCION / FUNCT. GAS CONVECTION | Lamina / Sheet | Fagor Industrial S.Coop. FAGOR |
| C-3081 | Iban R. | 2014-09 | HORNOS AG; ACG; APG-201 | 10 | Oñate |

| MOD. | | HORNOS / OVEN | ZONA / ZONE | FUNCIONAL GAS CONVECCION FUNCTIONAL GAS CONVECTION | | | | | |
|------|---------------------|----------------------------------|----------------------------|---|--------|---------|--|--|--|
| ITEM | CODIGO REFERENCE | DENOMINACION | DENOMINATION | ACG-201 | AG-201 | APG-201 | | | |
| 1 | 12039685 | DETECTOR CONVECCION 061 | CONVECTION DETECTOR 061 | 1 | 1 | 1 | | | |
| S/Nº | 12039450 | JUNTA BUJIA CONVECCION 102 | PLUG BOARD CONVECTION 102 | 1 | 1 | 1 | | | |
| 2 | 12039684 | BUJIA CONVECCION 061 | SPARK CONVECTION 061 | 1 | 1 | 1 | | | |
| S/Nº | 12039449 | 102 JUNTA BUJIA CONVECCION | 102 SPARK CONVECTI. BOARD | 1 | 1 | 1 | | | |
| 3 | 12044447 | TUBO DESAGUE ADV 01 | DRAIN PIPE ADV 01 | 1 | 1 | 1 | | | |
| 4 | 12045252 | JUNTA ACOP.SOPLANTE GRAFITO | JOINT COU. GRAPHITE BLOWER | 1 | 1 | 1 | | | |
| 5 | 12039540 | MIXER COMPLETO | MIXER COMPLETE | 1 | 1 | 1 | | | |
| S/Nº | 12041612 | JUNTA TORICA 63X3 | O-RING 63X3 | 1 | 1 | 1 | | | |
| 5A | 12040731 | TUBO GAS FLEXIBLE 900-90º | FLEXIBLE GAS PIPE 900-90º | 1 | 1 | 1 | | | |
| 6 | 12039541 | ARO VENTURI ROJO | RED RING VENTURI | 1 | 1 | 1 | | | |
| 7 | 12009940 | JUNTA TORICA114x3 | O-RING 114x3 | 1 | 1 | 1 | | | |
| 8 | 12044607 | SOPLANTE NRG 118 55kw | BLOWER NRG 118 55kw | 1 | 1 | 1 | | | |
| 9 | 12039560 | CAMARA SILENCIADOR 101 | CHAMBER MUFFLER 101 | 1 | 1 | 1 | | | |
| 10 | 12039544 | CHISPA BRAHMA | BRAHMA SPARK | 1 | 1 | 1 | | | |
| 11 | 12045252 | JUNTA ACOP.SOPLANTE GRAFITO | JOINT COU. GRAPHITE BLOWER | 1 | 1 | 1 | | | |
| 12 | 12039556 | QUEMADOR CONVECCION 101 | BURNER CONVECTION 101 | 1 | 1 | 1 | | | |
| 13 | 12039559 | JUNTA AMARRE QUEMADOR 101 | BURNER TIE BOARD 101 | 2 | 2 | 2 | | | |
| 14 | 12039474 | JUNTA SALIDA INTERCAMBOR 201 | OUTPUT BOARD EXCHANG. 201 | 1 | 1 | 1 | | | |
| 15 | 12039517 | AMARRE SALIDA CUERPO INT 101 | INSIDE OUT BODY TIE 101 | 1 | 1 | 1 | | | |
| 16 | 12039473 | INTERCAMB. CALOR SUPER. 201 | TOP HEAT EXCHANGER 201 | 1 | 1 | 1 | | | |
| 17 | 12040734 | INTERCAMBIAD. CALOR INFERIOR 201 | BOTTOM HEAT EXCHANGER 201 | 1 | 1 | 1 | | | |
| 18 | 12046364 | VALVULA REGUL 50HZ ADV | ADV 50HZ VALVE CONTROLL. | 2 | 2 | 2 | | | |
| 18 | 12046365 | VALVULA REGUL 60HZ ADV | ADV 60HZ VALVE CONTROLL. | 2 | 2 | 2 | | | |
| 19 | 12039440 | CAJA CONTROL DBC 579 | DBC CONTROL BOX 579 | 2 | 2 | 2 | | | |
| 20 | 12045675 | TOBERA Ø 5,2 BP | NOZZLE Ø 5,2 BP | 1 | 1 | 1 | | | |
| 20 | 12045677 | TOBERA Ø 7,5 GN | NOZZLEØ 7,5 GN | 1 | 1 | 1 | | | |
| 21 | 12048850 | TUERCA G 3/4 | NUT G 3/4 | 2 | 2 | 2 | | | |
| 22 | 12044366 | ENTRADA GAS CO. ACG 202 SUB | GAS INLET ACG 202 SUB | 1 | - | - | | | |
| 22 | 12041051 | ENTRADA GAS CO. ADV 202 SUB | GAS INLET ADV 202 SUB | - | 1 | 1 | | | |
| | | | | | | | | | |
| | | | | | | | | | |

Зип Общепит

vsezip.ru

7(812)987-08-81



ITEM MARCADO EN COLOR = REPUESTO RECOMENDADO
COLOURED ITEM = RECOMMENDED SPARE PART

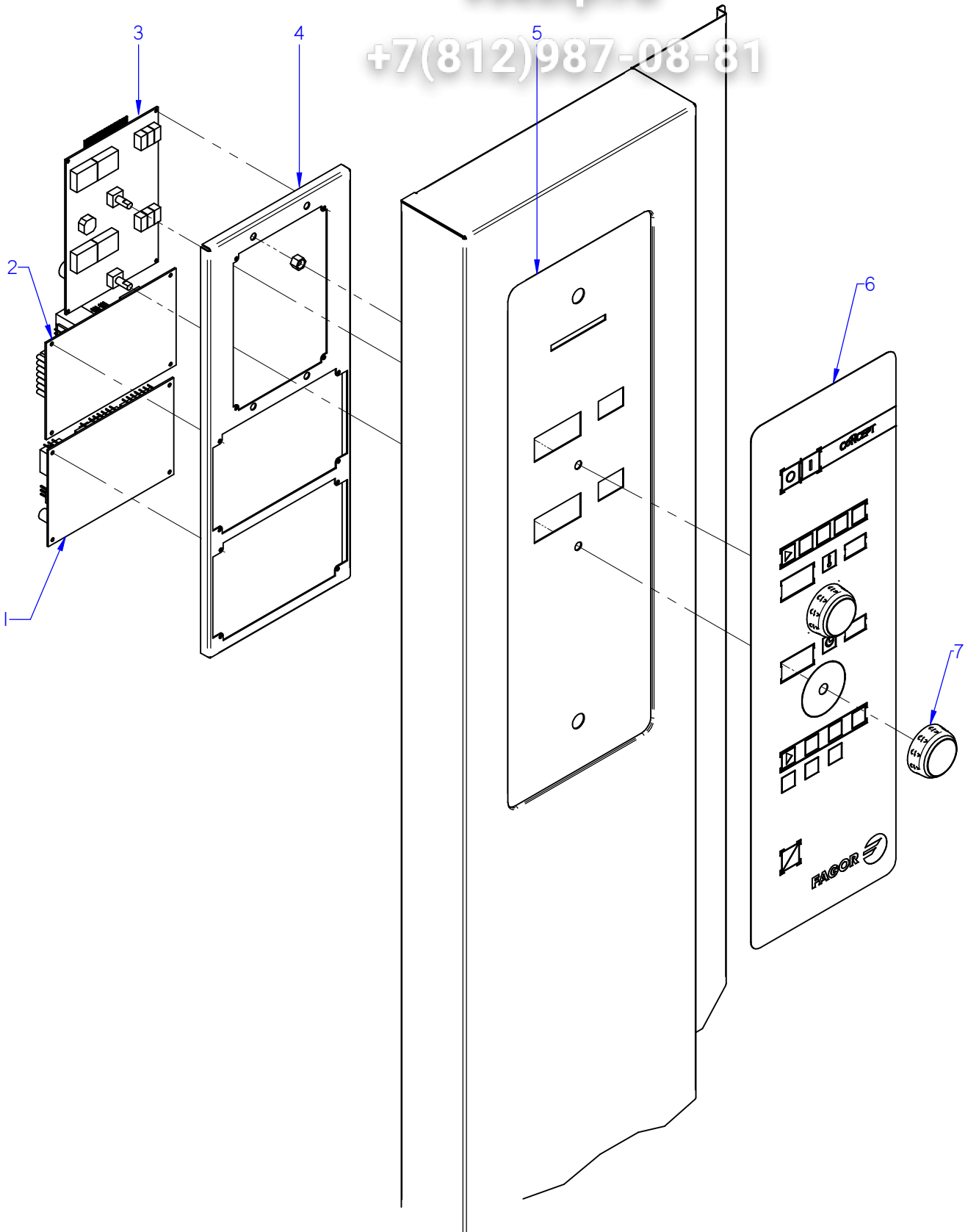
| | | | | | | |
|---------------------|--------------------|--------------|------------------------------|-----------------------------------|----------------|---------------------------------------|
| Nº plano / N° plane | Firma | Fecha / Date | Denominación / Denomination: | CUADRO ELECTRICO / ELECTRIC PANEL | Lamina / Sheet | Fagor Industrial S.Coop. FAGOR |
| C-3082 | <i>(Signature)</i> | 2012-09 | HORNOS AG; ACG; APG-201 | 11 | Oñate | |

| MOD. | | HORNOS / OVEN | | ZONA / ZONE | | CUADRO ELECTRICO / ELECTRIC PANEL | | | | | |
|------|------------------|------------------------------------|------------------------------|-------------|--------|-----------------------------------|--|--|--|--|--|
| ITEM | CODIGO REFERENCE | DENOMINACION | DENOMINATION | ACG-201 | AG-201 | APG-201 | | | | | |
| 1 | 12024642 | CONJUN. TERMOPAR CAMARA (Tn) | CHAM. THERMOCOUPLE UNIT (Tn) | 1 | 1 | 1 | | | | | |
| 2 | 12023581 | RACORD CIERRE SONDA | PROBE CLOSING ADAPTOR | 2 | 2 | 2 | | | | | |
| S/Nº | 12024247 | BICONO CIERRE SONDA | PROBE CLOSING BICONE | 1 | 1 | 1 | | | | | |
| 3 | 12023737 | BASE CIERRE SONDA | FIXING CORE PROBE | 1 | 1 | 1 | | | | | |
| 4 | 12023504 | JUNTA PASAMUROS SIMPLE | SIMPLE | 1 | 1 | 1 | | | | | |
| 5 | 12048798 | REP VARIADOR REGULADO ADV | REGULATED VARIATOR ADV | 2 | 2 | 2 | | | | | |
| 7 | 12039548 | SONDA PINCHO ADVANCE | ADVANCE PROBE PINCHO | 1 | 1 | 1 | | | | | |
| | 12040566 | CONTRATUERCA H 1/4" | COUNTERNUT H 1/4" | 1 | 1 | 1 | | | | | |
| 8 | 12022001 | SOPORTE TERMOS VAPOR | THERMOSTAT SUPPORT | 2 | 2 | 2 | | | | | |
| 9 | 12024591 | TERMOSTATO LIMITADOR 10/21 | LIMITER THERMOSTAT10/21 | 1 | 1 | 1 | | | | | |
| 10 | 12024884 | TERMOSTATO LIMITADOR CORTE | THERMOSTAT LIMITER | - | 1 | 1 | | | | | |
| 11 | 12024011 | CONTACTOR 230 V. 50-60 HZ | 230 V. 50-60 HZ CONTACTOR | 1 | 1 | 1 | | | | | |
| 12 | 12025158 | BORNAS PORTA FUSIBLES | FUSE HOLDER TERMINAL | 2 | - | - | | | | | |
| S/Nº | 12024152 | FUSIBLE 10A Ø5MM 20X5 | 10A Ø5MM 20X5 FUSE | 2 | - | - | | | | | |
| 12 | 12040888 | BORNAS PORTAFUSIBLES 15A 4 | FUSE HOLDER TERMINAL 15A | - | 2 | 2 | | | | | |
| S/Nº | 12017280 | FUSIBLE 15A Ø5MM 20X5 | 15A Ø5MM 20X5 FUSE | - | 2 | 2 | | | | | |
| | 12024743 | BORNA TIERRA 10 WPE-10103.O | EARTH TERMINAL10 WPE-10103.O | 1 | 1 | 1 | | | | | |
| | 12024199 | TOPE FINAL BORNA 10mm2 UL | FINAL STOP TERMINAL UL 10 | 1 | 1 | 1 | | | | | |
| 13 | 12024106 | VENTILADOR 230V AC 1N 50/60Hz 36KW | FAN 230V AC 1N 50/60Hz 36KW | 2 | 2 | 2 | | | | | |
| 14 | 12024790 | PROTECCI. VENTILADOR RM-155 | FAN PROTECTION RM-155 | 1 | 1 | 1 | | | | | |
| 15 | 12009966 | PRENSA ESTOPAS | STUFFING BOX | 1 | 1 | 1 | | | | | |
| | 12010121 | CONTRATUERCA (GAES)790.1300.0 | COUNTERNUT (GAES) 790.1300.0 | 1 | 1 | 1 | | | | | |
| | 12010046 | JUNTA GOMA (GAES) | RUBBER BOARD (GAES) | 1 | 1 | 1 | | | | | |
| 16 | 12041634 | CON.TERMOPAR VAPOR (Tv) | STEAM THERMOCOUPLE UNIT (Tv) | 1 | 1 | - | | | | | |
| 16 | 12044609 | CONJ. TERMOPAR L425 (Tv) | L425 THERMOCOUPLE UNIT (Tv) | - | - | 1 | | | | | |
| 17 | 12043409 | BICONO CIERRE SONDA Ø4 | PROBE CLOSING BICONE Ø4 | 1 | 1 | 1 | | | | | |
| 18 | 12041049 | RACORD CIERRE SONDA Ø 4 | PROBE CLOSING ADAPTOR Ø 4 | 1 | 1 | 1 | | | | | |
| 19 | 12024173 | TRANSFORMADOR 12-0-12-0,24-0 | TRANSFORMER 12-0-12-0,24-0 | 1 | 1 | 1 | | | | | |
| | | | | | | | | | | | |
| | | | | | | | | | | | |
| | | | | | | | | | | | |

Зип Общепит

vsezip.ru

+7(812)987-08-81



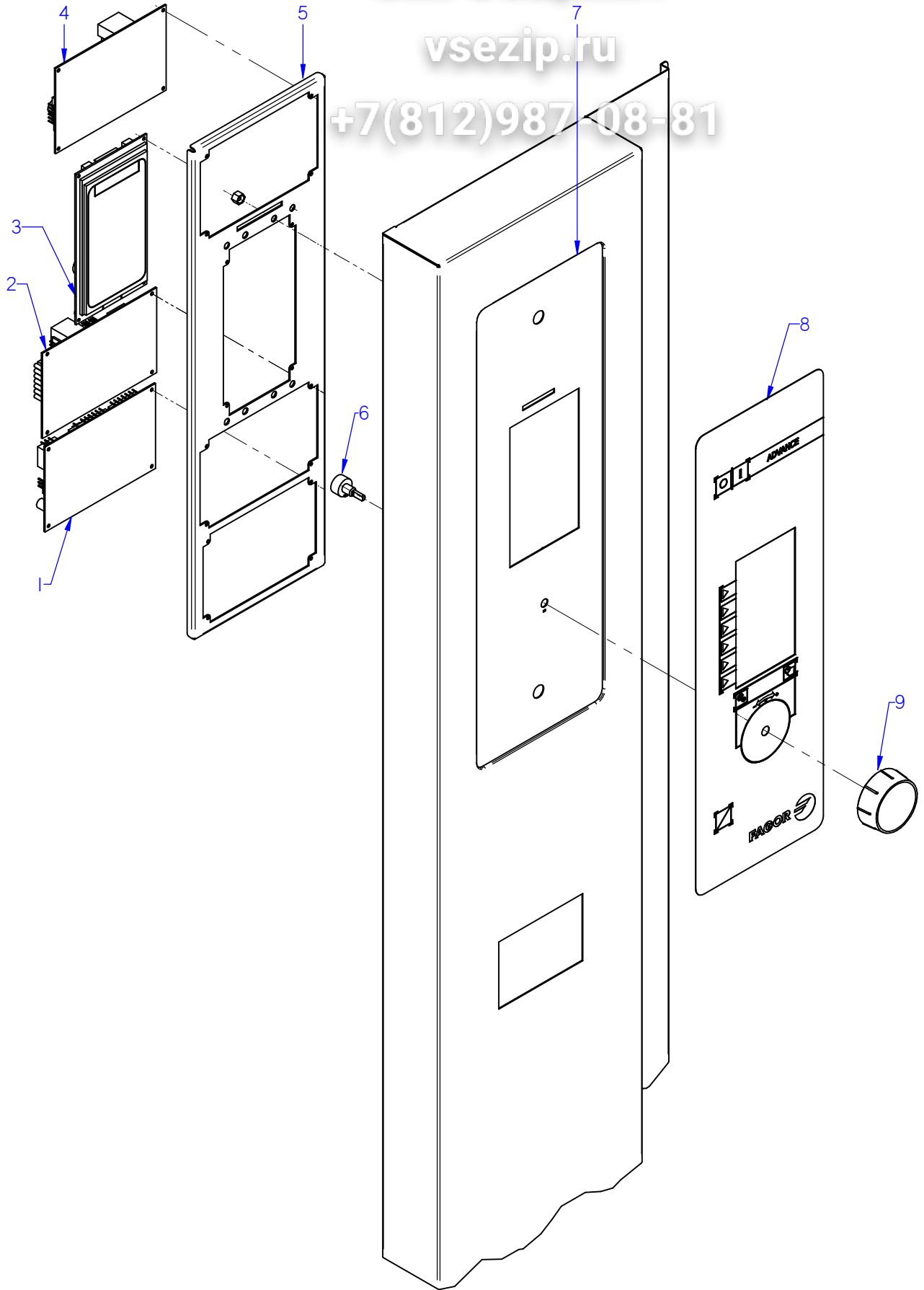
ITEM MARCADO EN COLOR = REPUESTO RECOMENDADO
COLOURED ITEM = RECOMMENDED SPARE PART

| | | | | | |
|---------------------|--------------------|--------------|---|----------------|---|
| Nº plano / N° plane | Firma | Fecha / Date | Denominación / Denomination: PORTAMANDOS / CONTROL HOLDER | Lamina / Sheet | Fagor Industrial S.Coop. FAGOR  |
| C-3083 | <i>name Benfor</i> | 2012-09 | HORNOS ACG-201 | 12 | Odate |

Зип Общепит

vsezip.ru

+7(812)987 08-81



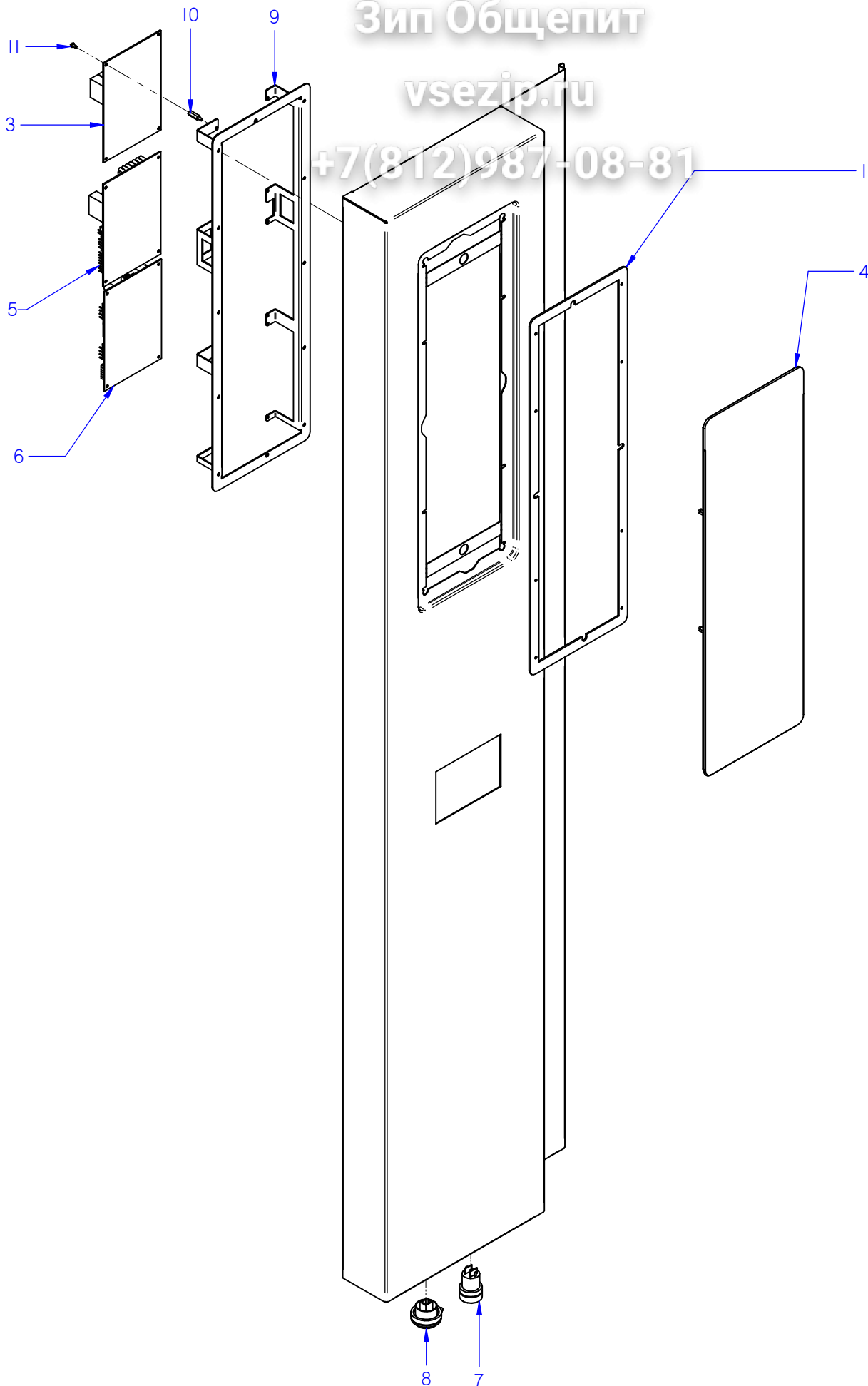
ITEM MARCADO EN COLOR = REPUESTO RECOMENDADO
COLOURED ITEM = RECOMMENDED SPARE PART

| | | | | | |
|---------------------|--------------------|--------------|---|----------------|---------------------------------------|
| Nº plano / N° plane | Firma | Fecha / Date | Denominación / Denomination: PORTAMANDOS / CONTROL HOLDER | Lamina / Sheet | Fagor Industrial S.Coop. FAGOR |
| C-3084 | <i>(Signature)</i> | 2012-09 | HORNOS AG-201 | 13 | Odate |

Зип Общепит

vsezip.ru

+7(812)987-08-81



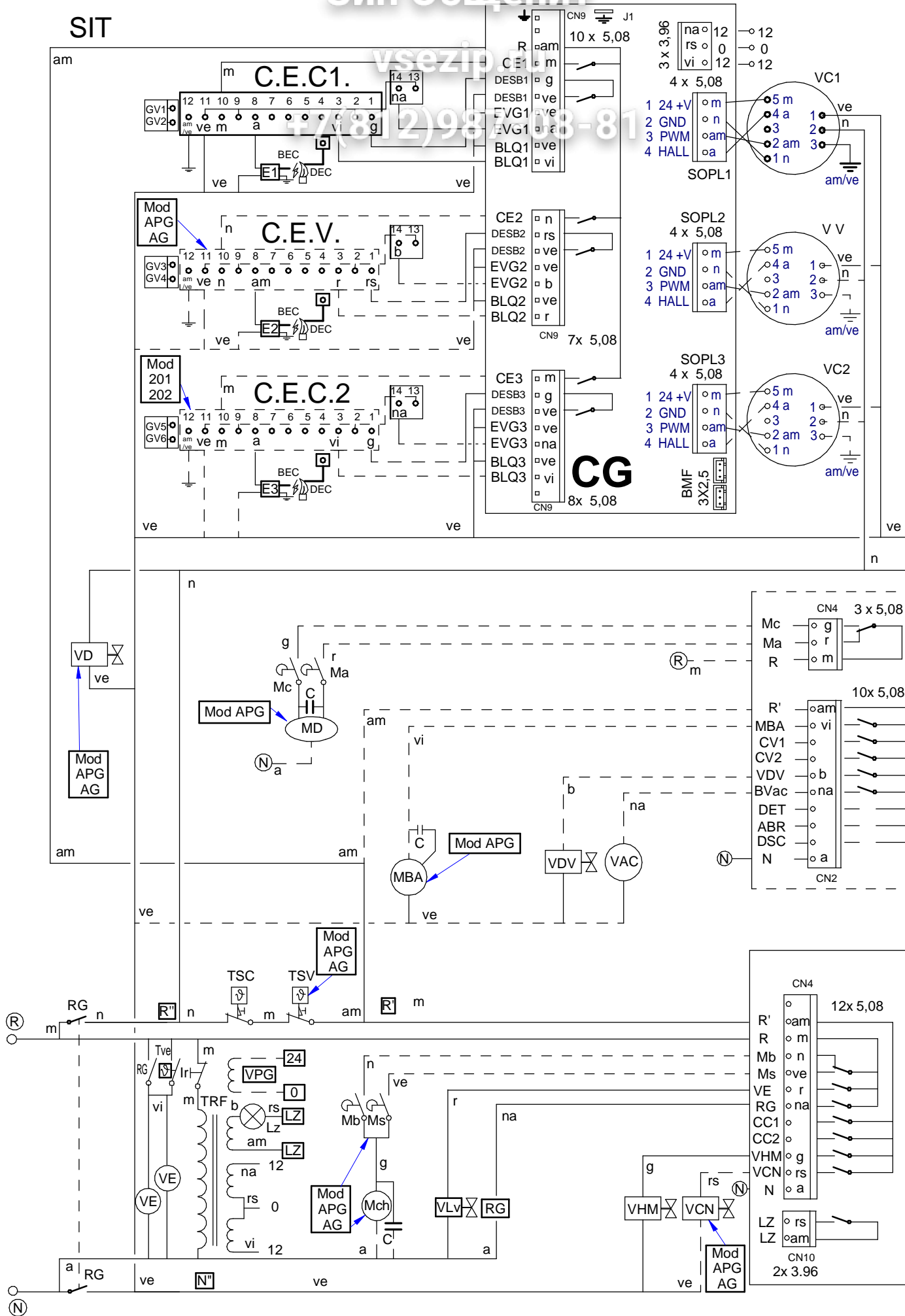
ITEM MARCADO EN COLOR = REPUESTO RECOMENDADO
COLOURED ITEM = RECOMMENDED SPARE PART

| | | | | | |
|---------------------|--------------------|--------------|---|----------------|---------------------------------------|
| Nº plano / N° plane | Firma | Fecha / Date | Denominación / Denomination: PORTAMANDOS / CONTROL HOLDER | Lamina / Sheet | Fagor Industrial S.Coop. FAGOR |
| C-3085 | <i>[Signature]</i> | 05-2015 | HORNOS APG-201 | 14 | Oñate |

| MOD. | | HORNOS / OVEN | | ZONA / ZONE | | REPUESTOS RECOMENDADOS RECOMMENDED SPARE PART | | | | | |
|------|---------------------|---------------------------------|------------------------------|-------------|--------|--|--|--|--|--|--|
| ITEM | CODIGO REFERENCE | DENOMINACION | DENOMINATION | ACG-201 | AG-201 | APG-201 | | | | | |
| 23 | 12097686 | KIT PUERTA 201 CIERRE UNICO | SINGLE LOCK DOOR 201 KIT | 1 | 1 | 1 | | | | | |
| 1 | 12041083 | KIT CRISTAL INTER. 201 | 201 INNER GLASS KIT | 1 | 1 | 1 | | | | | |
| 8 | 12039312 | BISAGRA SUPERIOR | UPPER HINGE | 1 | 1 | 1 | | | | | |
| 12A | 12135274 | REP. ASA COMP. 20X CIERRE UNICO | SPARE SINGLE LOCK 20X HANDLE | 1 | 1 | 1 | | | | | |
| 13 | 12047967 | BASE BISAGRA INFERIOR 6 DIEN | LOWER HINGE BASE | 1 | 1 | 1 | | | | | |
| 16 | 12024560 | INTERRUPTOR MAGNETICO AC | MAGNETIC SWITCH AC | 1 | 1 | 1 | | | | | |
| 21 | 12041134 | JUNTA PUERTA COMPL.201 ADV | DOOR JOINT 201 ADV | 1 | 1 | 1 | | | | | |
| 22 | 12041088 | JUNTA CIERRE INFERIOR 201 | LOWER LOCK JOINT 201 | 1 | 1 | 1 | | | | | |
| 1 | 12025161 | E.V. 230VAC 50/60Hz 1V | SOLENOID VALVE 230VAC 1 W | 1 | - | 1 | | | | | |
| 2 | 12023794 | E.V. 230VAC 50/60Hz 2V | SOLENOID VALVE 230VAC 2 W | 1 | 1 | - | | | | | |
| 2 | 12115418 | E.V. 230VAC 50/60Hz 3V | SOLENOID VALVE 230VAC 3 W | - | 1 | 1 | | | | | |
| 19 | 12095019 | TERMOSTATO_261_NA_51°C | THERMOSTAT_261_NA_51°C | 1 | 1 | - | | | | | |
| 1 | 12024325 | MOTOR 230V AC 3N650KW 1450RPM | MOTOR 230V AC 3N650KW 1450 | 2 | 2 | 2 | | | | | |
| 4 | 12024510 | RETEN 17X28X7V | RETAINER 28x17x7 | 4 | 4 | 4 | | | | | |
| 5 | 12010122 | ANILLO DE SEGURIDAD Ø 28X1.2 | SAFETY RING 28x1,2 | 2 | 2 | 2 | | | | | |
| 6 | 12024306 | TURBINA RECTA Ø350X127 HANN. | TURBINE RECTA Ø350X127 HAN | 2 | 2 | 2 | | | | | |
| 11 | 12025193 | INTERRUPTOR PUERTA | DOOR SWITCH | 2 | 2 | 2 | | | | | |
| 12 | 12024638 | MOTOR CHIMENEA | FLUEPIPE MOTOR | 1 | 1 | 1 | | | | | |
| 14 | 12024122 | TUBO FLEXIBLE Ø53X360 | FLEXIBLE TUBE Ø53X360 | 1 | 1 | 1 | | | | | |
| 13 | 12126816 | KIT VALVULA DESAGUE ADVAN. | VALVE DRAIN ADVANCE KIT | - | - | 1 | | | | | |
| 22 | 12024782 | MOTOBOMBA 230V AC 1N 50Hz | MOTOR 230V AC 1N 50Hz 74,6 | - | - | 1 | | | | | |
| 1 | 12046107 | KIT GENERADOR VAPOR 201 | STEAM GENERATOR 201 KIT | - | 1 | 1 | | | | | |
| 3 | 12023573 | ELECTRODO ALTO | HIGH LEVEL ELECTRODE | - | 1 | 1 | | | | | |
| 4 | 12023574 | ELECTRODO BAJO | LOW LEVEL ELECTRODE | - | 1 | 1 | | | | | |
| 5 | 12023575 | ELECTRODO DE MASA | EARTH ELECTRODE | - | 1 | 1 | | | | | |
| 11 | 12039546 | MOTOBOMBA 230V AC 1N 50/60Hz | PUMP 230V AC 50/60Hz 30W 1N | - | 1 | 1 | | | | | |
| 12 | 12023901 | CONJUN. TERMOPAR VAPOR | STEAM THERMOCOUPLE UNIT | - | 1 | 1 | | | | | |
| | | | | | | | | | | | |
| | | | | | | | | | | | |
| | | | | | | | | | | | |

| MOD. | | HORNOS / OVEN | | ZONA / ZONE | | REPUESTOS RECOMENDADOS RECOMMENDED SPARE PART | | | | | |
|------|---------------------|------------------------------------|------------------------------|-------------|--------|--|--|--|--|--|--|
| ITEM | CODIGO REFERENCE | DENOMINACION | DENOMINATION | ACG-201 | AG-201 | APG-201 | | | | | |
| 1 | 12039544 | CHISPA BRAHMA | BRAHMA SPARK | - | 1 | 1 | | | | | |
| 2 | 12044424 | QUEMADOR GENERADOR 201G | BURNER GENERATOR 201G | - | 1 | 1 | | | | | |
| 4 | 12044607 | SOPLANTE NRG 118 55kw | BLOWER NRG 118 55kw | - | 1 | 1 | | | | | |
| 8 | 12039440 | CAJA CONTROL DBC 579 | DBC CONTROL BOX 579 | - | 1 | 1 | | | | | |
| 9 | 12046364 | VALVULA REGUL 50HZ ADV | ADV 50HZ VALVE CONTROLL. | - | 1 | 1 | | | | | |
| 9 | 12046365 | VALVULA REGUL 60HZ ADV | ADV 60HZ VALVE CONTROLL. | - | 1 | 1 | | | | | |
| 15 | 12039430 | BUJIA GENERADOR 202 | PLUG GENERATOR 202 | - | 1 | 1 | | | | | |
| 16 | 12039431 | DETECTOR GENERADOR 202 | GENERATOR SENSOR 202 | - | 1 | 1 | | | | | |
| 1 | 12039685 | DETECTOR CONVECCION 061 | CONVECTION DETECTOR 061 | 1 | 1 | 1 | | | | | |
| 2 | 12039684 | BUJIA CONVECCION 061 | SPARK CONVECTION 061 | 1 | 1 | 1 | | | | | |
| 8 | 12044607 | SOPLANTE NRG 118 55kw | BLOWER NRG 118 55kw | 1 | 1 | 1 | | | | | |
| 12 | 12039556 | QUEMADOR CONVECCION 101 | BURNER CONVECTION 101 | 1 | 1 | 1 | | | | | |
| 18 | 12046364 | VALVULA REGUL 50HZ ADV | ADV 50HZ VALVE CONTROLL. | 2 | 2 | 2 | | | | | |
| 18 | 12046365 | VALVULA REGUL 60HZ ADV | ADV 60HZ VALVE CONTROLL. | 2 | 2 | 2 | | | | | |
| 19 | 12039440 | CAJA CONTROL DBC 579 | DBC CONTROL BOX 579 | 2 | 2 | 2 | | | | | |
| 27 | 12039685 | DETECTOR CONVECCION 061 | CONVECTION DETECTOR 061 | 1 | 1 | 1 | | | | | |
| 28 | 12039684 | BUJIA CONVECCION 061 | SPARK CONVECTION 061 | 1 | 1 | 1 | | | | | |
| 29 | 12039556 | QUEMADOR CONVECCION 101 | BURNER CONVECTION 101 | 1 | 1 | 1 | | | | | |
| 34 | 12044607 | SOPLANTE NRG 118 55kw | BLOWER NRG 118 55kw | 1 | 1 | 1 | | | | | |
| 1 | 12024642 | CONJUN. TERMOPAR CAMARA (Tn) | CHAMBER THERMOCOUPLE (Tn) | 1 | 1 | 1 | | | | | |
| 5 | 12048798 | REP VARIADOR REGULADO ADV | REGULATED VARIATOR ADV | 2 | 2 | 2 | | | | | |
| 7 | 12039548 | SONDA PINCHO ADVANCE | ADVANCE PROBE PINCHO | 1 | 1 | 1 | | | | | |
| 9 | 12024591 | TERMOSTATO LIMITADOR 10/21 | LIMITER THERMOSTAT10/21 | 1 | 1 | 1 | | | | | |
| 10 | 12024884 | TERMOSTATO LIMITADOR CORTE | THERMOSTAT LIMITER | - | 1 | 1 | | | | | |
| 13 | 12024106 | VENTILADOR 230V AC 1N 50/60Hz 36KW | FAN 230V AC 1N 50/60Hz 36KW | 2 | 2 | 2 | | | | | |
| 16 | 12041634 | CONJUN.TERMOPAR VAPOR (Tv) | STEAM THERMOCOUPLE UNIT (Tv) | 1 | 1 | - | | | | | |
| 16 | 12044609 | CONJ. TERMOPAR L425 (Tv) | L425 THERMOCOUPLE UNIT (Tv) | - | - | 1 | | | | | |
| 19 | 12024173 | TRANSFORMADOR 12-0-12-0,24-0 | TRANSFORMER 12-0-12-0,24-0 | 1 | 1 | 1 | | | | | |
| | | | | | | | | | | | |
| | | | | | | | | | | | |
| | | | | | | | | | | | |

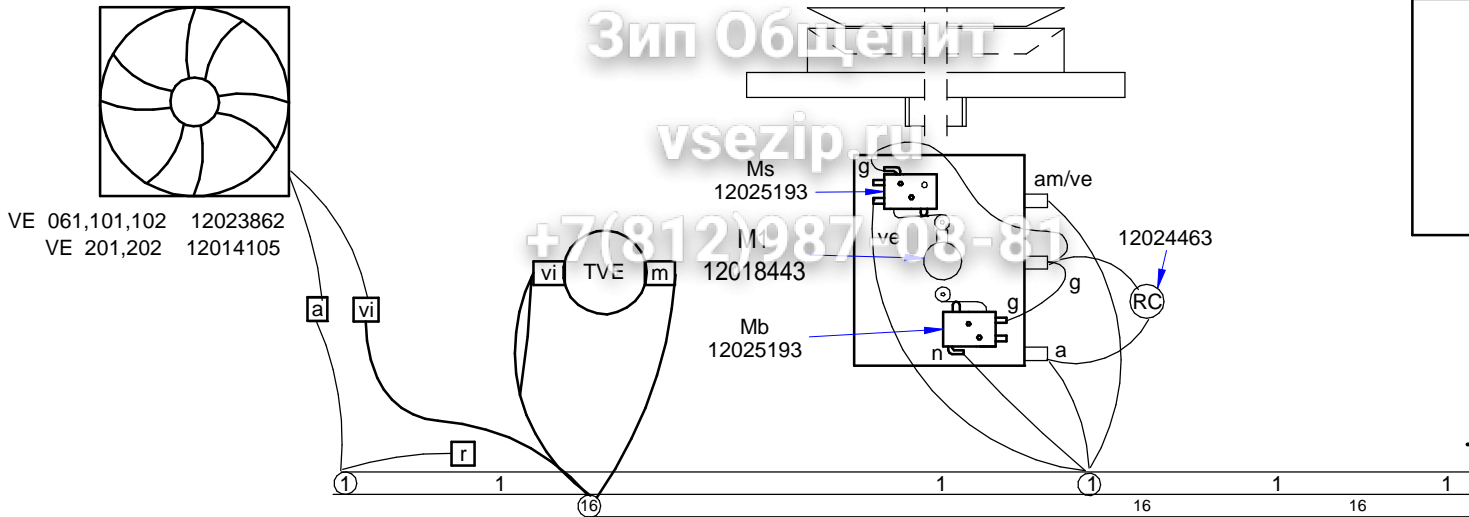
SIT



Зип Общепит

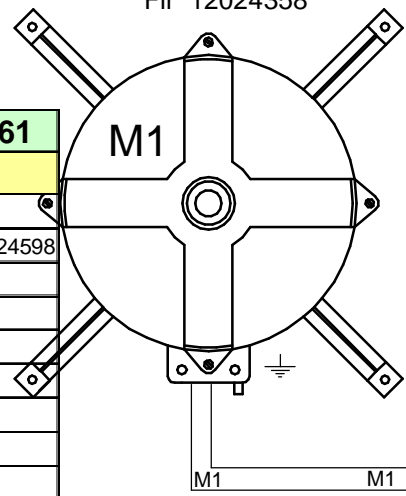
vsezip.ru

+7(812)987103-85

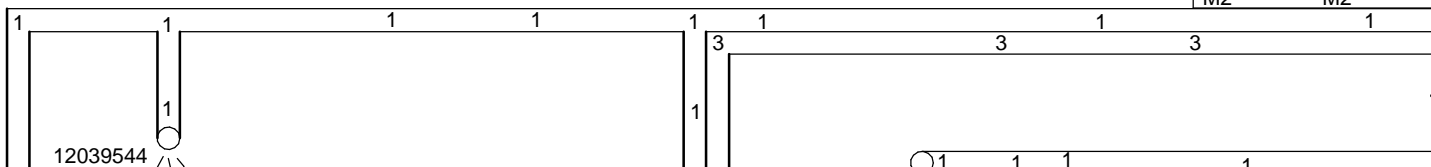
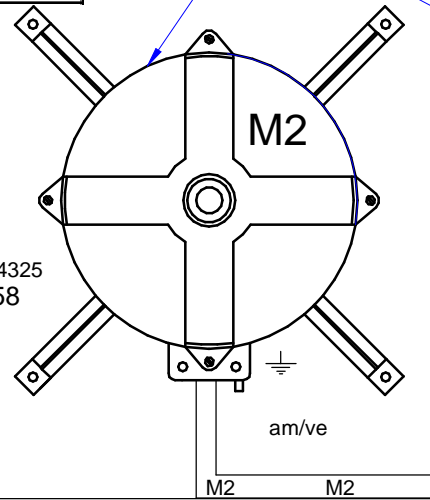


Hanning 12024325
Fir 12024358

| | | 061, 101, 102 | 202, 201 | 201, 202 | 102 | 101 | 061 |
|------------|----|---------------|-------------|-------------|----------|----------|----------|
| | | AG | APG | AG | ACG | | |
| Genrl | 1 | 12039537 | 12049470 UL | 12039472 | 12044393 | 12044401 | |
| Cbl.Sp VC1 | 2 | 12024598 | 12008929 | 12024655 | 12008929 | 12024655 | 12008929 |
| Cbl.Sp V V | 3 | 12024598 | | 12008929 | 12024598 | | |
| Cbl.Sp VC2 | 4 | | | 12008929 | | | |
| DII.C1 | 5 | 12024399 | | 12024453 | | | 12024399 |
| DII.V | 6 | 12024453 | | | | | |
| BMF | 7 | 12023696 | | | | | |
| DII.C2 | 8 | 12024399 | | | | | |
| ADPT | 9 | 12039455 | | 12039455 | | | |
| Lz | 10 | 12024569 | | 12024575 | | 12024569 | |
| Lavado | 11 | 12040567 | | | | | |
| Rst | 12 | 12008976 | | | | | |
| TFT | 13 | 12009257 | | | | | |
| USB | 14 | 12023775 | | | | | |
| Tierra | 15 | 12008032 | | | | | |
| Ventilador | 16 | 12130535 | | 12130541 | | 12130535 | |
| Esquema | - | 12039676 | | 12049534 UL | | | |
| Leyenda | - | 12022177 | | | | | |
| Ind.Comp | - | 12022160 | | | | | |
| Sop VC1 | | NRG118 | RG128 | | NRG118 | | |
| Sop VV | | NRG118 | RG148 | NRG118 | | | |
| Sop VC2 | | RG128 | | | | | |



Hanning 12024325
Fir 12024358



| | ESPAÑOL | FRANÇAIS | ENGLISH |
|----------|-----------------------------------|--|---------------------------|
| BEc | Bujía Encendido Cámara | Bougie Allumage Chambre | Chamber Spark Plug |
| BEV | Bujía Encendido Caldera | Bougie Allumage Chaudière | Boiler Spark Plug |
| C.C. | Control Camara | Contrôle Chambre | Chamber Control |
| C.E.C | Control Combustión Cámara | Contrôle Combustion Chambre | Chamber Combustion |
| C.E.V | Control Combustión Caldera | Contrôle Combustion Chaudière | Boiler Combustion |
| C.G. | Control Gas | Contrôle Gaz | Control Gas |
| C.V. | Control Caldera | Contrôle Chaudière | Boiler Control |
| CC1, CC2 | Contactador Resistencia Cámara | Contacteur Élément Chauffant Chambre | Chamber Heating Element |
| CK1, CK2 | Contactador General Calentamiento | Relais Élément Chauffant | Heating Element Relay |
| CV1, CV2 | Contactador Resistencias Caldera | Contacteur Élément Chauffant Chaudière | Boiler Heating Element |
| DEC | Detector Llama Cámara | Détecteur Flamme Chambre | Chamber Flame Detector |
| DEV | Detector Llama Caldera | Détecteur Flamme Chaudière | Boiler Flame Detector |
| DN | Detector Nivel Caldera | Détecteur Niveau Chaudière | Boiler Level Detector |
| F | Fusibles | Fusibles | Fuses |
| FI | Filtro Interferencias | Filtre Interférences | Interference Filter |
| FM | Térmico Motor | Thermique Moteur | Thermal Engine |
| GV1, GV2 | Electro válvula Gas Cámara | Électrovanne Gaz Chambre | Chamber Gas Solenoid |
| GV3, GV4 | Electro válvula Gas Caldera | Électrovanne Gaz Chaudière | Boiler Gas Solenoid |
| Ip | Interruptor Seguridad Puerta | Interrupteur Sécurité Porte | Door Safety Switch |
| Lz | Luz Interior | Éclairage Intérieur | Inner Light |
| M, M2 | Motor Turbina | Moteur Turbine | Turbine Engine |
| Ma | Interruptor Micro Abierto | Microrupteur Ouvert | Open Microswitch |
| Mb | Interruptor Micro Bajada | Microrupteur Descente | Drop Microswitch |
| Mc | Interruptor Micro Cerrado | Microrupteur Fermé | Closed Microswitch |
| Mch | Motor Chimenea | Moteur Cheminée | Stack Engine |
| MD | Motor Desague | Moteur évacuation | Drain Engine |
| Ms | Interruptor Micro Subida | Microrupteur Montée | Rise Microswitch |
| PF | Potenciómetro Selector Funciones | Potentiomètre Sélecteur Fonctions | Functions Selector |
| RC | Resistencias Cámara | Éléments Chauffants Chambre | Chamber Heating Elements |
| RG | Rele General | Relais Général | Main Relay |
| RV | Resistencias Caldera | Éléments Chauffants Chaudière | Boiler Heating Elements |
| Tc | Sonda Cámara | Sonde Chambre | Chamber Probe |
| TCN | Termostato Condensación | Thermostat Condensation | Condensation Thermostat |
| Tg | Sonda Caldera | Sonde Chaudière | Boiler Probe |
| Tn | Sonda Núcleo | Sonde Noyau | Core Probe |
| TRF | Transformador | Transformateur | Transformer |
| TSC | Termostato Seguridad Cámara | Thermostat Sécurité Chambre | Chamber Safety Thermostat |
| TSV | Termostato Seguridad Caldera | Thermostat Sécurité Chaudière | Boiler Safety Thermostat |
| Tv | Sonda Vapor | Sonde Vapeur | Steam Probe |
| VAC | Bomba Vaciado | Pompe Vidange | Vacuum Pump |
| MBA | Moto Bomba Aclarado | Pompe Rinçage | Rinsing Pump |
| VC1, VC2 | Ventilador Soplante Camara | Ventilateur Soufflant | Blowing Fan |
| VCN | Electro válvula Condensación | Électrovanne Condensation | Condensation Solenoid |
| VDV | Electro válvula Llenado Caldera | Électrovanne Remplissage Chaudière | Chamber Filling Solenoid |
| VE | Ventilador Cuadro Eléctrico | Ventilateur Tableau Électrique | Fan Switchboard |
| VF1,VF2 | Variador de Frecuencia | Variateur Vitesse | Speed Variator |
| VHM | Electro válvula Humidificador | Électrovanne Humidificateur | Humidifier Solenoid |
| Vv | Ventilador Soplante Caldera | Ventilateur soufflement chaudière | Boiler Blowing Fan |
| | COLORES | COULEURS | COLOUR |
| a | Azul | Bleu | Blue |
| am | Amarillo | Jaune | Yellow |
| am/ve | Amarillo/verde | Jaune / vert | Yellow / green |
| b | Blanco | Blanc | White |
| g | Gris | Gris | Grey |
| m | Marrón | Marron | Brown |
| n | Negro | Noir | Black |
| na | Naranja | Orange | Orange |
| r | Rojo | Rouge | Red |
| rs | Rosa | Rose | Pink |
| ve | Verde | Vert | Green |
| vi | Violeta | Violet | Purple |