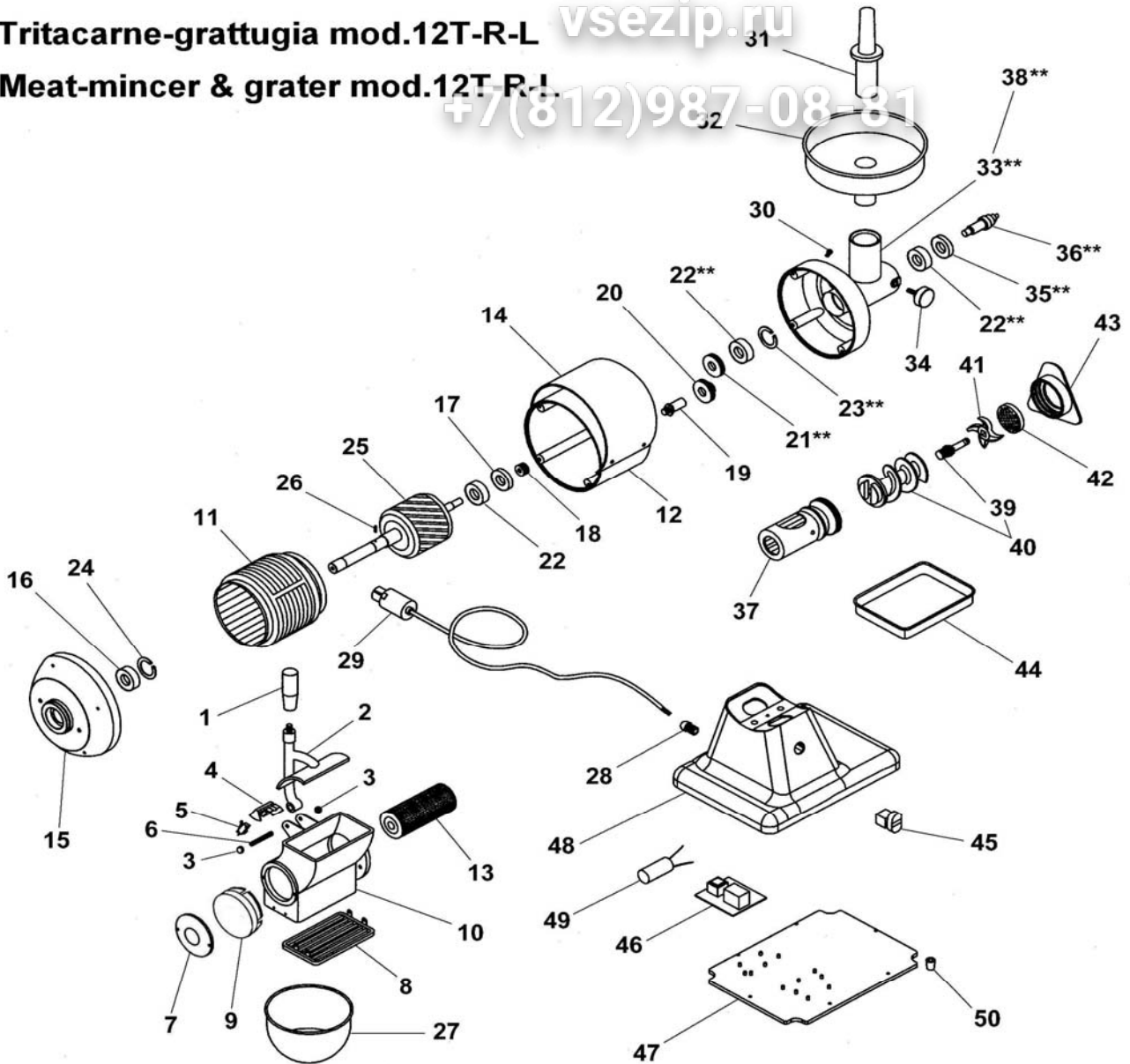


Tritacarne-grattugia mod.12T-R-L

Meat-mincer & grater mod.12T R-L

+7(812)987-08-81



\*\* : Assemblato / Assembly

# TRITACARNE-GRATTOIA MOD.12T-R-L MEAT-MINCE & GRATER MOD.12T-R-L

Rif No	Codice Code	Caratteristiche Characteristics	Descrizione Description
1	SL0106	☉	Impugnatura Grip
2	SL0201		Pressore Lever press
2	SL0107	01/09/99 f.p.(*)	Pressore Lever press
3	SL0108	M8	Dado Nut
4	SL0882		Supporto Support
5	SL0885	☉	Micrinterruttore Microswitch
6	SL0258	M8x60	Prigioniero Stud
7	SL2833		Coperchio Cover
8	SL1452	01/01/04 f.p.(*)	Griglia Grid
9	SL2573		Tappo Tap
10	SL0203		Bocca Casing
10	SL0112	01/09/99 f.p.(*)	Bocca Casing
11	SL0183	400V/3Ph/50Hz	Statore Stator
11	SL0122	230V/1Ph/50Hz	Statore Stator
12	SL0146		Carcassa Housing
12	SL0123	01/04/00 f.p.(*)	Carcassa Housing
13	SA5200		Rullo Roller
14	SL0181		Copertura Covering
15	SL0117		Calotta Calotte
16	SL0118	6205 ZZ	Cuscinetto Bearing
17	SL0127	17x40x7	Paraolio Oil seal
18	SL0128		Ingranaggio Gear
19	SL0124		Albero Shaft
20	SL0125		Ingranaggio Gear
21	SL0130		Ingranaggio Gear
22	SL0131	6203 2RS	Cuscinetto Bearing
23	SL0132	ø40	Seeger Seeger
24	SL0119	ø52	Seeger Seeger
25	SA6700	400V/3Ph/50Hz	Rotore Rotor
25	SA6600	230V/1Ph/50Hz	Rotore Rotor
26	SL0121	ø5x10	Spina Pin
27	SL0174	(R-T)	Recipiente Container
27	SL0175	(L)	Recipiente Container
28	SL1052	PG11	Pressacavo Cable clamp
29	SL1841	3Ph+Gnd	Cavo elettrico Electric cable
29	SL1671	1Ph+N+Gnd	Cavo elettrico Electric cable
30	SL2917	☉	Tappo Tap
30	SL0133		Tappo Tap
31	SL0134	☉	Pestello Pusher
32	SL0135	(R-L)	Tramoggia Hopper
32	SL0136	(T)	Tramoggia Hopper
33	SL3000		Bocchettone Sleeve
34	SL0138	☉	Pomello Knob
35	SL0139	25x40x7	Paraolio Oil seal
36	SL0140		Albero Shaft
37	SL0142		Bocchettone Sleeve
38	SA3700	Assembly	Bocchettone Sleeve
39	SL2521		Perno Pivot
39	SL0822	10/06/02 f.p.(*)	Perno Pivot
40	SA5300	☉	Elica Screw shaft
40	SA5100	01/01/00 f.p.(*)	Elica Screw shaft
41	//////////	☉	Coltello Cutter
42	//////////	☉	Piastra Plate
43	SL0171		Volantino Handwheel
44	SL0180	(R-T)	Recipiente Container
45	SL0891	☉	Pulsante Push button
46	SL0883	☉	Scheda elettronica Electronic card
47	SL2651	(R-T)	Fondo Bottom
47	SL0268	15/10/04 f.p.(*) (R-T)	Fondo Bottom
47	SL0226	(L)	Fondo Bottom
48	SL2988	(R-T)	Base Base
48	SL0178	15/10/04 f.p.(*) (R-T)	Base Base
48	SL0179	(L)	Base Base
49	SL0177	16µF	Condensatore Condenser
50	SL0235		Piedino Foot

(\*): fuori produzione / out of production

☉ : ricambio consigliato / spare part suggested