

Зип Общепит

vsezip.ru

+7(812)987-08-81



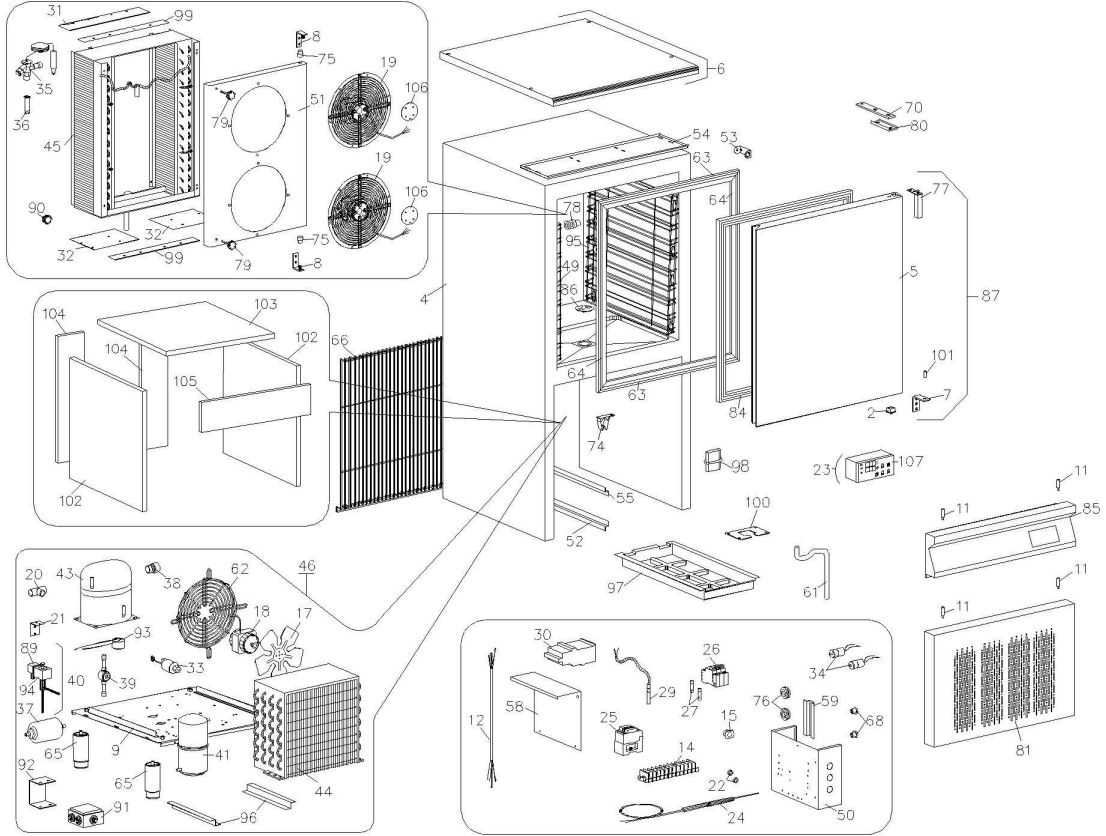
**ART2LD**

**Edition 20090901-**

Зип Общепит

vsezip.ru

+7(812)987-08-81



Pos	Code	Description	Info
002	3178300	PLUG	15/12/1997-
004	30D5700	FRAME	15/12/1997-
005	30F0460	DOOR	15/12/1997-
005	30F0930	DOOR	26/10/2001-
006	6006300	TOP	15/12/1997-
007	35C5600	BOTTOM BRACKET	19/06/2001-
008	30T2690	BRACKET	15/12/1997-
009	30W4150	TRAY X ASSEMBLY	01/02/2002-
011	36G9570	PIN	16/03/2001-
012	32A1960	POWER SUPPLY CABLE	15/12/1997-
013	32D0020	CABLE CLAMP Ø 4 - 12	15/12/1997-
014	32D1300	TERMINAL BOARD	15/12/1997-
015	32D1350	CABLE CLAMP	15/12/1997-
017	32M5311	FAN	15/12/1997-
018	32M4701	MOTOR	15/12/1997-
019	32M6610	FAN	20/01/2002-
020	33Q6190	"T" JOINT	15/12/1997-
021	35R1500	SUPPORT	15/12/1997-
022	32X0220	FAIRLEAD	15/12/1997-
023	32V0421	HORIZONTAL PCB 4 BLAST CHILLER	18/09/1999-
024	32V0441	PIN PROBE	06/07/1999-
025	32Z9250	SWITCH	15/12/1997-
026	32Z9500	FUSE-HOLDER	15/12/1997-
027	32Z9520	FUSE	15/12/1997-
029	32V0150	TEMP. PROBE	24/06/1999-
030	32Z7960	RELAY	15/12/1997-
031	35P0440	TOP EVAP. HEAD	15/12/1997-
032	35P0450	BOTTOM EVAP. HEAD	15/12/1997-
033	32Z9910	PRESSURE-SWITCH	15/12/1997-
034	32V5160	CONDENSER	20/01/2002-
035	33A0870	THERMOST. VALVE	15/12/1997-
036	33A0840	BORE	15/12/1997-
037	33A0350	FILTER	15/12/1997-
038	33A1200	AUXIL.VALVE	15/12/1997-
039	33D0740	FLOW-ON LIGHT	15/12/1997-
040	33G0070	VALVE	15/12/1997-
041	33G1170	DRIP TRAY	15/05/2002-
043	34D5940	COMPRESSOR	15/12/1997-
044	34D5190	CONDEN.+BAFFLE	15/12/1997-
045	34D6380	EVAPORATOR	08/11/1998-
046	34E0480	MOTOR ASS.Y	01/02/2002-
049	36C3790	RACK 6T NF	21/06/1999-
049	36C4060	LH RACK	03/09/1999-
050	35C8280	PANEL BOARD	15/12/1997-
051	3AA4450	EVAP.GUARD	31/05/2001-
052	35C5830	GUIDE	15/12/1997-
053	35C6250	PROBE SUPPORT	15/12/1997-
054	35C5940	"OMEGA" BRACKET	15/12/1997-
055	35C7250	GUIDE	15/12/1997-
058	35C8290	COVER	15/12/1997-
059	35S4540	"OMEGA" BRACKET	15/12/1997-

Pos	Code	Description	Info
061	35X4410	DRAIN PIPE	15/12/1997-
062	36C3061	FAN.PROT.	11/05/1999-
063	36C2390	TRIM FRAME	15/12/1997-
064	36C2411	TRIM FRAME	15/12/1997-
065	36C3690	ST-STEEL FO	01/02/2002-
065	36C4920	ST-STEEL FO	06/04/2002-
066	36E1450	PROTECT GRI	12/07/1999-
068	36D4440	PIN	15/12/1997-
070	36D9490	TOP BRACKET	15/12/1997-
074	36E0350	CABLE CAMP	15/12/1997-
075	36E0410	BUSHING	15/12/1997-
076	36G3940	PULLEY	15/12/1997-
077	36G6520	HINGE	15/12/1997-
078	36G8140	PIN	15/12/1997-
079	36G9560	HANDLE	16/03/2001-
080	3600770	SPACER	15/12/1997-
081	3AA2480	PROTECTION	15/12/1997-
084	37Q3800	GASKET	15/12/1997-
085	3AA2930	CONTROL BOARD	15/12/1997-
086	30G3710	PLUG	15/12/1997-
087	6013330	DOOR ASS.Y	26/10/2001-
088	32Q4310	CABLE ASS.Y	15/12/1997-
089	32D0710	THREE-POLE CONNECTOR	16/05/1998-
090	36Z0490	ENGINE CUTOUT	15/12/1997-
091	32D1380	BOX	15/12/1997-
092	35R7450	SUPPORT	15/12/1997-
093	32V0950	ENGINE CUTO	15/12/1997-
094	32Z2750	COIL	15/12/1997-
095	36C4050	RH RACK	03/09/1999-
096	35R8420	""""S""""FRAME"	12/11/1999-
097	36Z0300	COND. TRAY	12/11/1999-
098	33Q4390	COUPLING TUBES	12/11/1999-
099	35P1960	EVAP. HEAD	24/07/2000-
100	35Y2550	PLATE	15/06/2001-
101	36G9410	PIN	19/06/2001-
102	37Q4560	SOUND-PROOFING	15/03/2002-
103	37Q4910	SOUND-PROOFING	15/03/2002-
104	37Q4580	SOUND-PROOFING	15/03/2002-
105	37Q4590	SOUND-PROOFING	15/03/2002-
106	35Y3790	PROTECTION MOTOR	22/07/2004-
107	37N5060	SILK-SCREE.PANEL	01/09/2009-