

Зип Общепит

vsezip.ru

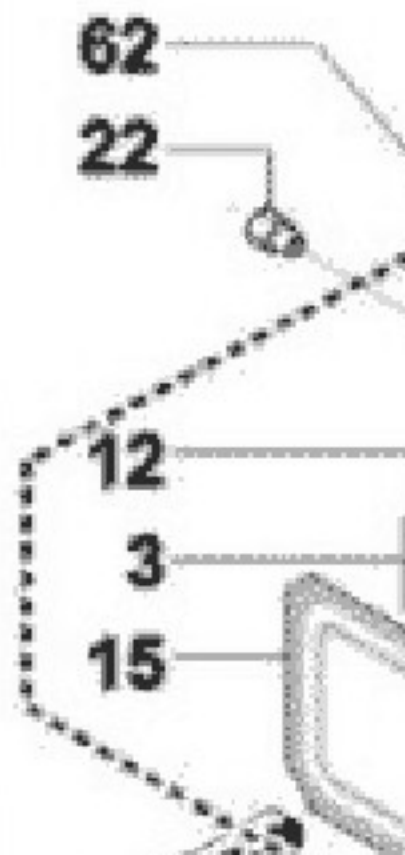
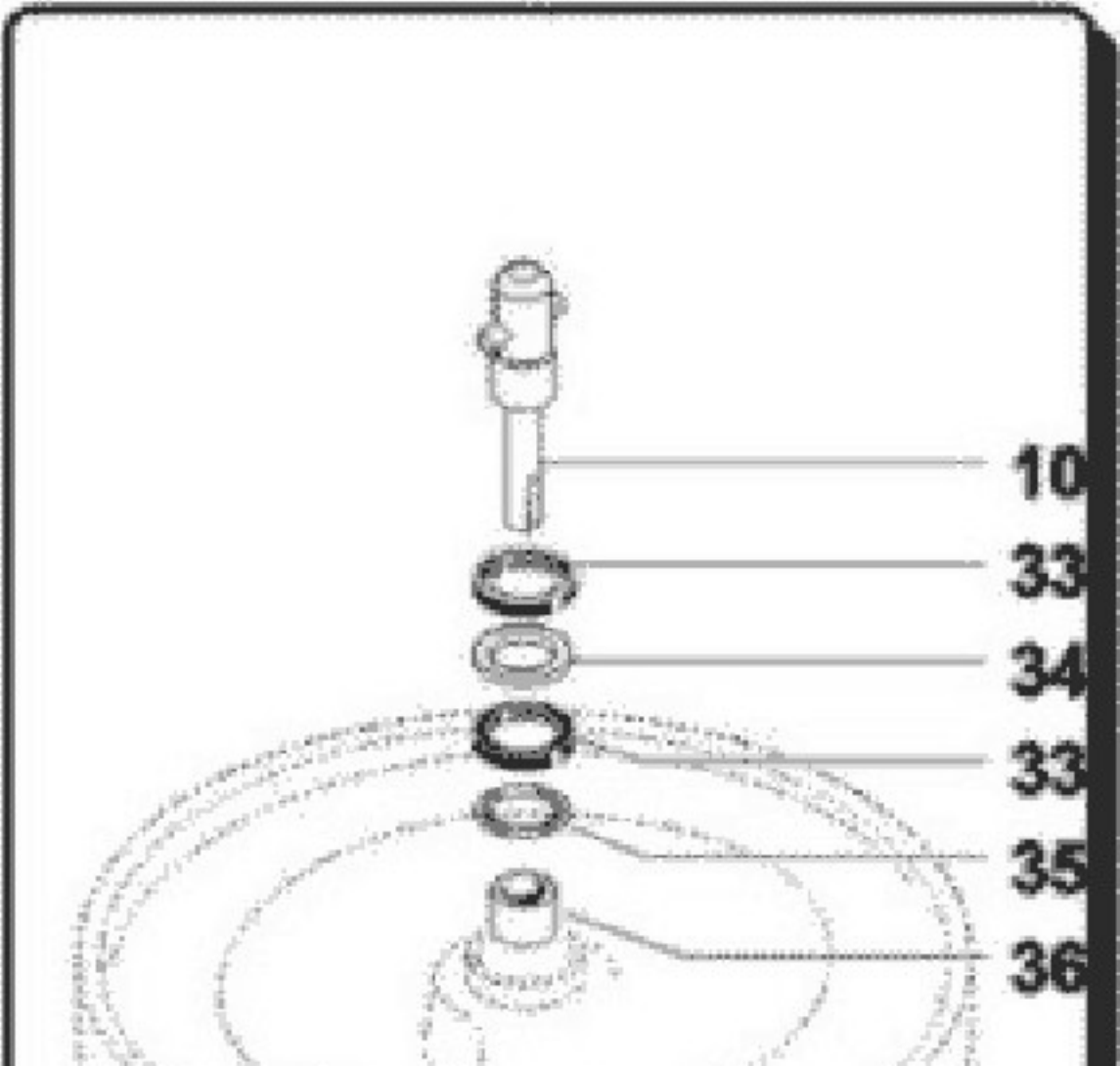
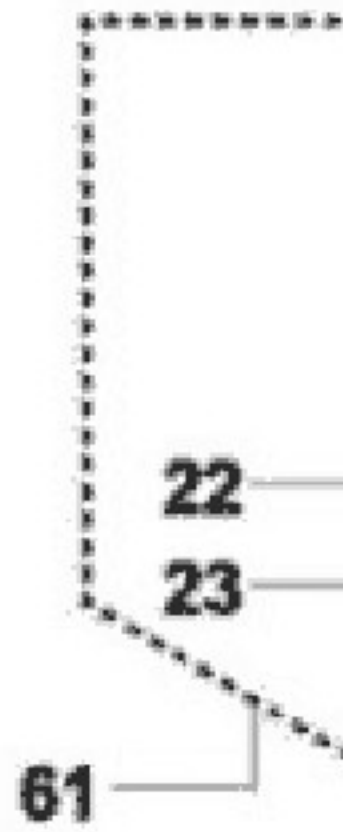
+7(812)987-08-81



P10

Edition 19980306-

Зип Общепит
vsezip.ru
+7(812)987-08-81



Pos	Code	Description	Info
001	30W2930	CUP BOARD	06/03/1998-
002	33D1371	INLET WATER SOLENOID VALVE	06/03/1998-
003	35G4730	HATCH CLOSING DEVICE	06/03/1998-
004	35Q8620	BOTTOM END PANEL	06/03/1998-
005	35S8400	SAFETY THERM. SUPPORT	06/03/1998-
006	35X1150	DRAIN PIPE	06/03/1998-
007	3600870	CHAMBER BOTTOM	06/03/1998-
008	36C0011	FRAME	06/03/1998-
009	36G2040	PIN	06/03/1998-
010	36G6590	TRANSMISSION SHAFT	06/03/1998-
011	36G6620	PULLEY	06/03/1998-
012	36Z6531	DOOR	06/03/1998-
013	37M1610	CONTROL PANEL	06/03/1998-
014	37Q7860	DOOR GASKET	06/03/1998-
015	37M7870	PANEL	06/03/1998-
016	30A3560	BOARD HOLDER	06/03/1998-
017	3191030	SPACER	06/03/1998-
018	32Z3030	P.C.B.	06/03/1998-
019	32Q2430	EL. CABLES	06/03/1998-
020	36Z6501	COVER	06/03/1998-
021	37Q7330	GASKET	06/03/1998-
022	36D9550	BUSHING	06/03/1998-
023	36M5090	HANDLE	06/03/1998-
024	36D9660	PAWL	06/03/1998-
025	35V6381	BRACKET	06/03/1998-
026	3600310	MAGNET	06/03/1998-
027	3128960	WASHER	06/03/1998-
028	36Z0690	CONTROL BOARD	06/03/1998-
029	36D7310	SLEEVE	06/03/1998-
030	32W3240	MICROSWITCH	06/03/1998-
031	3600160	MAGNET	06/03/1998-
032	6005400	HANDLE	06/03/1998-
033	3151300	WASHER	06/03/1998-
034	3190830	WASHER	06/03/1998-
035	36F0090	BEARING	06/03/1998-
036	36G5950	BEARING	06/03/1998-
037	36G6600	PULLEY	06/03/1998-
038	36G6610	BELT	06/03/1998-
039	35V1230	SUPPORT	06/03/1998-
040	32M0130	MOTOR	06/03/1998-
041	3140460	HOSE CLAMP	06/03/1998-
042	3151750	"O" RING Ø 400	06/03/1998-
043	33Q5180	HOSE SUPPORT	06/03/1998-
044	32X0120	GROMMET Ø 21	06/03/1998-
045	35V8601	ELCTRIC BOX	06/03/1998-
046	32D0520	TERMINAL BOARD	06/03/1998-
047	32D1030	THREE-POLE	06/03/1998-
048	32D1040	THREE-POLE CONNECTOR	06/03/1998-
049	32D0630	"OMEGA" BRACKET	06/03/1998-
050	32Z4840	RELAY	06/03/1998-
051	32D1100	TERMINAL CLAMP	06/03/1998-

Pos	Code	Description	Info
052	35M8840	BACK END PANEL	06/03/1998-
053	33Q6210	REDUCING	06/03/1998-
054	33Q6040	"ELBOW MF 1/4\''''"	06/03/1998-
055	33M0960	WATER BURNER PIPE	06/03/1998-
056	32D1090	FAIRLEAD	06/03/1998-
057	32D0360	CABLE CLAMP	06/03/1998-
058	131AA07	SLEEVE	06/03/1998-
059	3151550	GASKET	06/03/1998-
060	33M0010	PIPE	06/03/1998-
061	6005380	WELL LID ASS. Y	06/03/1998-
062	6005390	DOOR ASS.Y	06/03/1998-