

Зип Общепит

vsezip.ru

+7(812)987-08-81



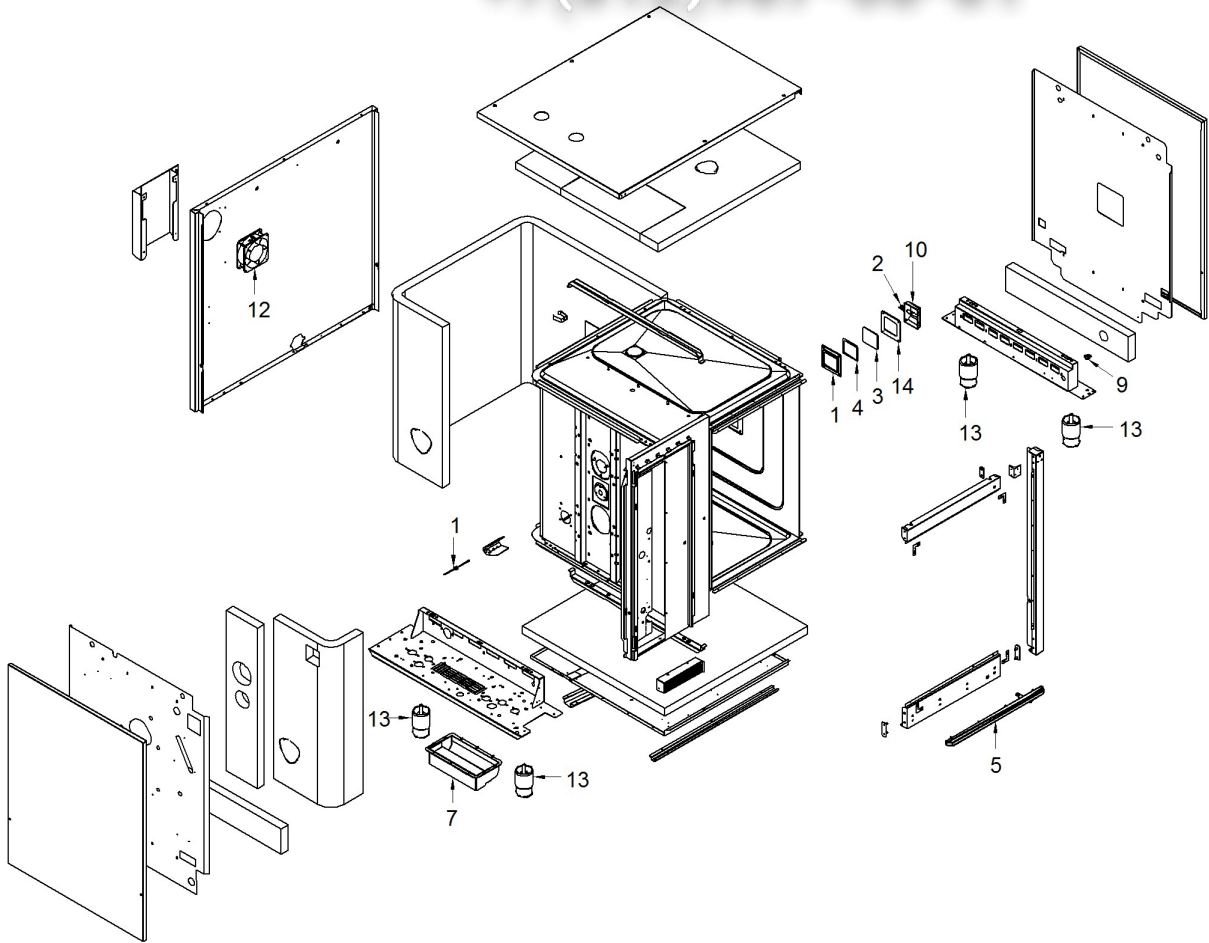
FX101E1

Edition 20150601-

Зип Общепит

vsezip.ru

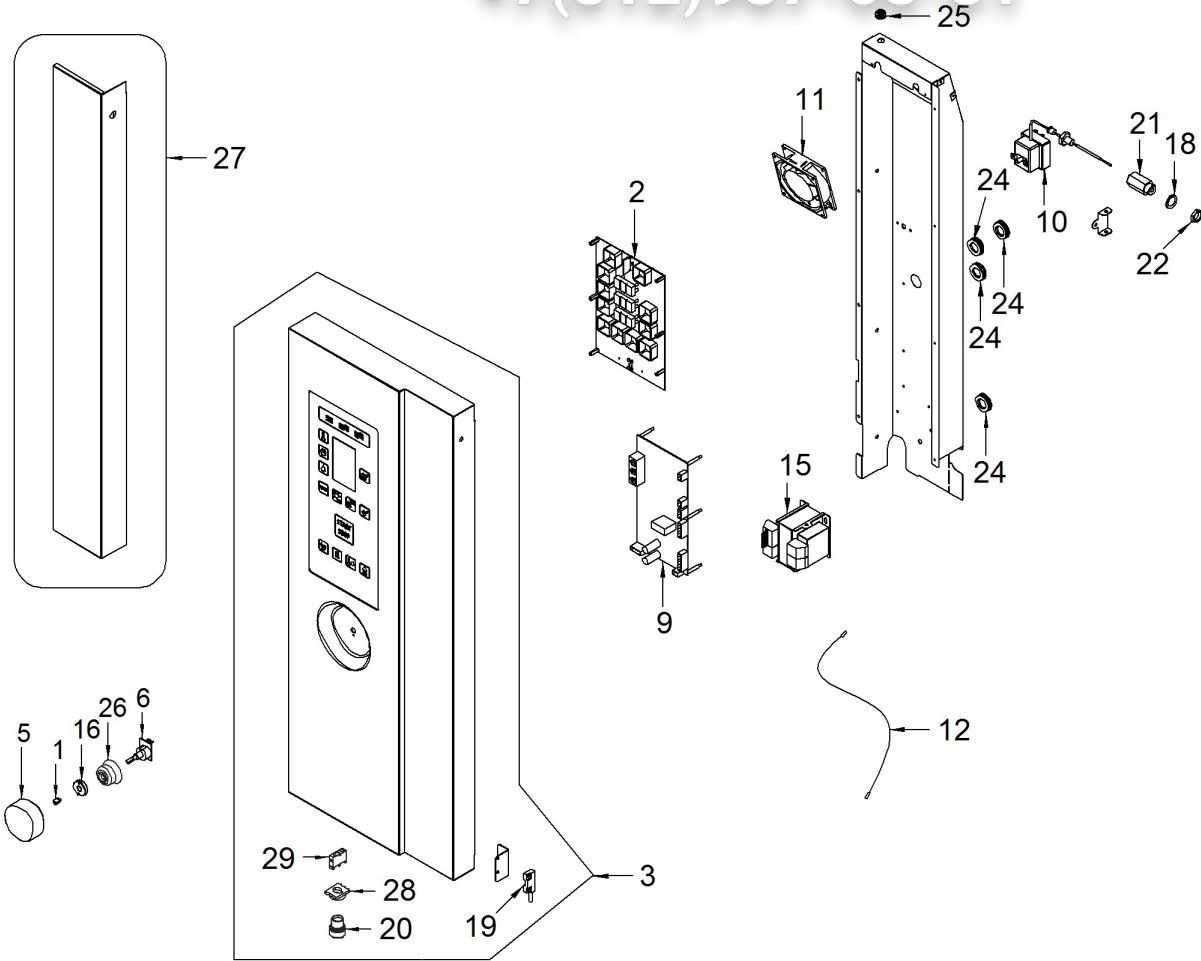
+7(812)987-08-81



Зип Общепит

vsezip.ru

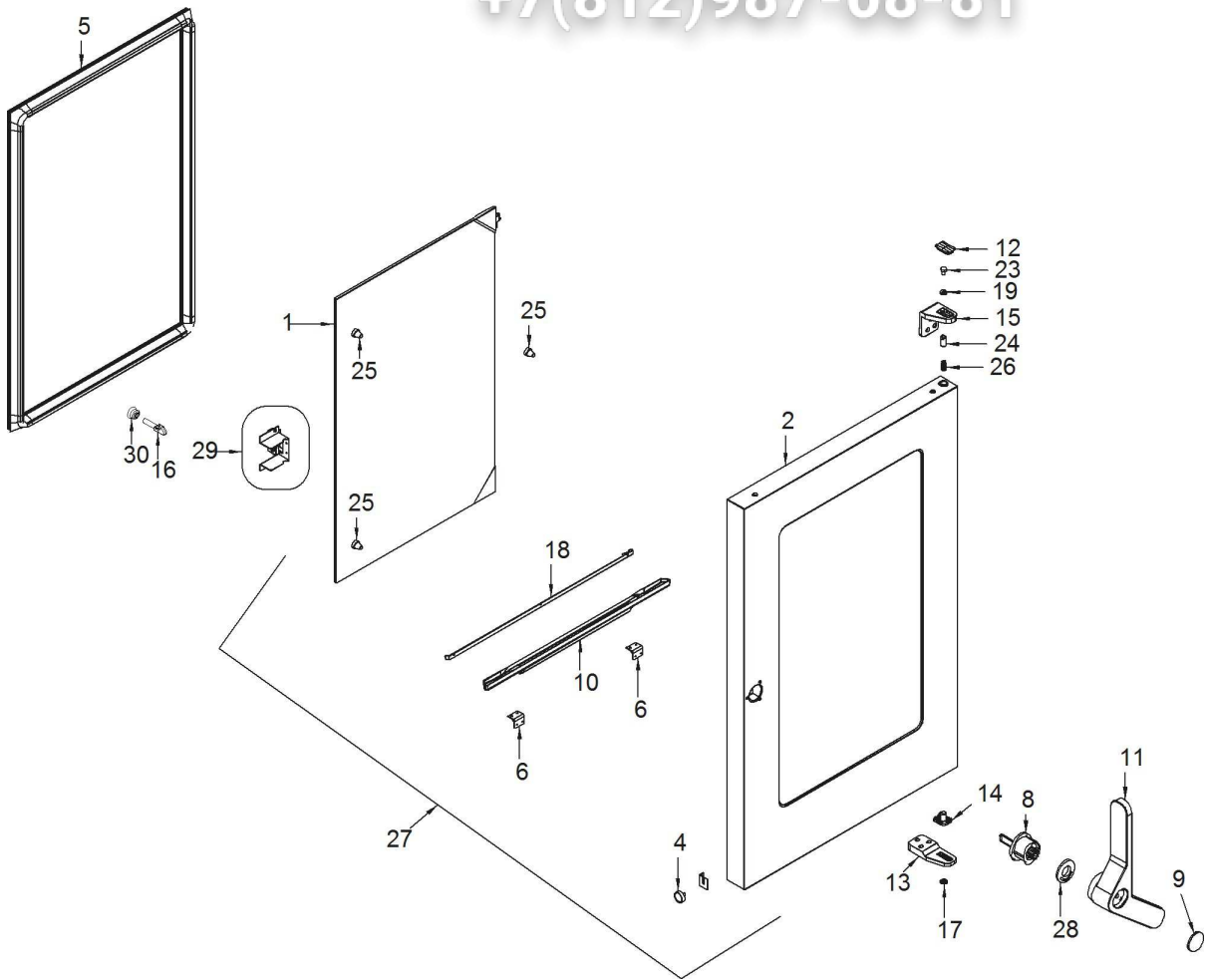
+7(812)987-08-81



Зип Общепит

vsezip.ru

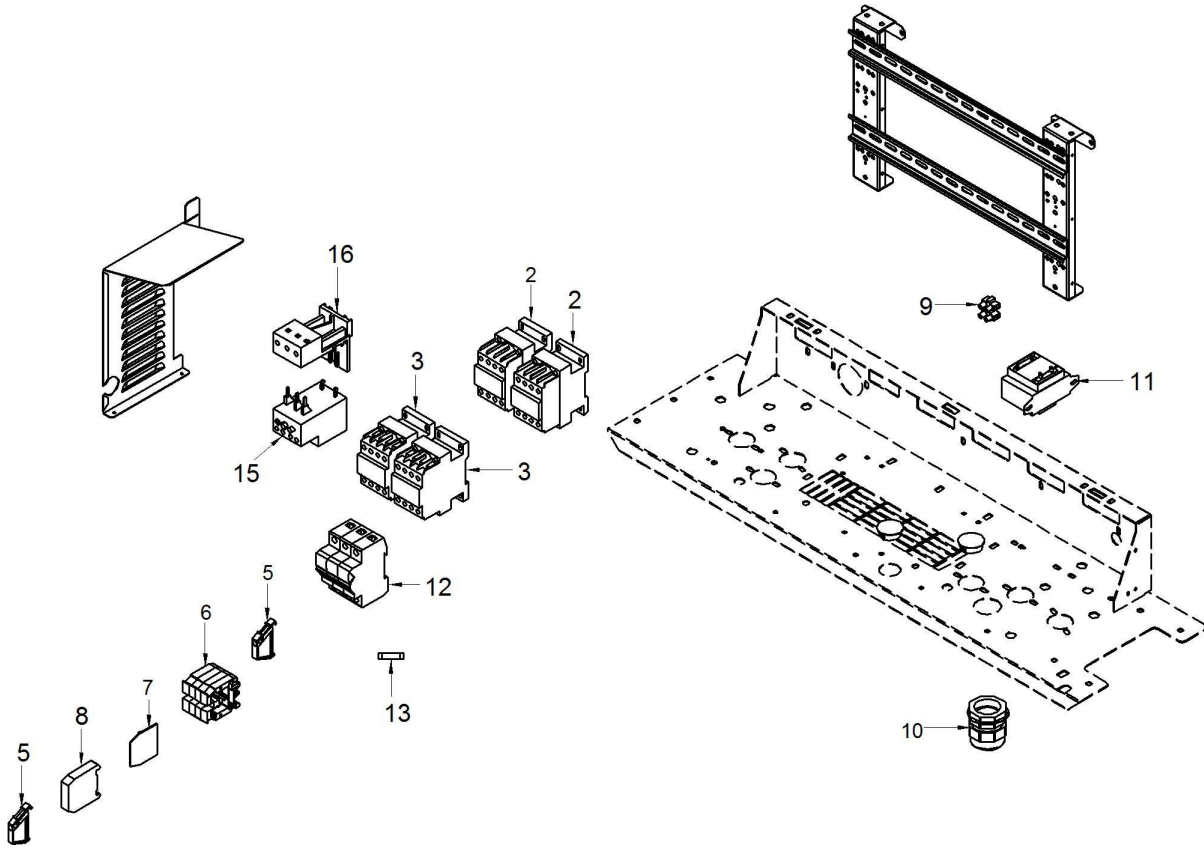
+7(812)987-08-81



Зип Общепит

vsezip.ru

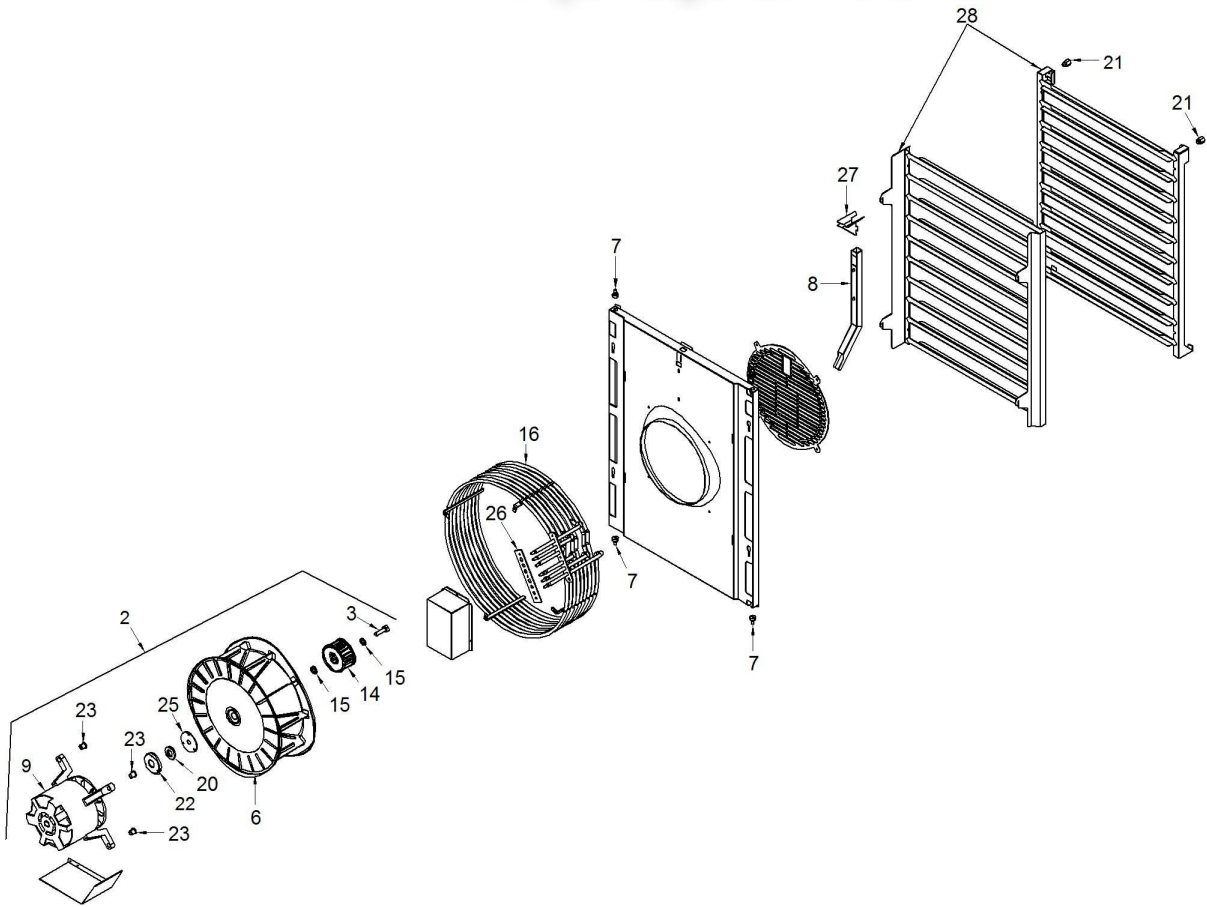
+7(812)987-08-81



Зип Общепит

vsezip.ru

+7(812)987-08-81



| Page | Pos | Code | Description | Info |
|------|-----|---------|--|-------------|
| 002 | 001 | 3278370 | LAMP GUARD | 14/01/2015- |
| 002 | 002 | 3030661 | HALOGEN LAMP | 01/12/2014- |
| 002 | 003 | 3036962 | GLASS | 07/08/2012- |
| 002 | 005 | 3215200 | TRAY | 01/09/2012- |
| 002 | 007 | 3116860 | AIR BOX | 15/12/2009- |
| 002 | 009 | 32D1450 | TERMINAL | 15/12/2009- |
| 002 | 010 | 32V5570 | LAMP, COMPLETE | 15/12/2009- |
| 002 | 011 | 32V5750 | THERMAL RESISTOR, PT1000 | 15/12/2009- |
| 002 | 012 | 32V5790 | FAN 20W 120mm | 21/02/2013- |
| 002 | 013 | 36D5732 | FOOT | 15/12/2009- |
| 002 | 014 | 36E3170 | LAMP GASKET | 15/12/2009- |
| 003 | 001 | 3170290 | KNOB SPRING | 15/12/2009- |
| 003 | 002 | 6301004 | LED/CPU PCB | 01/06/2015- |
| 003 | 003 | 6300887 | CONTROL BOARD ASS.Y + GLASS | 31/01/2013- |
| 003 | 005 | 3104142 | HANDLE | 24/10/2012- |
| 003 | 006 | 6300966 | ENCODER ASSEMBLY | 15/01/2014- |
| 003 | 009 | 6300755 | RELAYS PCB ASS.Y | 15/12/2009- |
| 003 | 010 | 3148080 | SAFETY THERMOSTAT | 22/01/2013- |
| 003 | 011 | 3205930 | FAN | 01/03/2012- |
| 003 | 012 | 3116170 | CABLE RJ45 L=1MT | 15/12/2009- |
| 003 | 015 | 3117170 | TRANSFORMER | 15/12/2009- |
| 003 | 016 | 3121921 | SPACER | 11/01/2013- |
| 003 | 018 | 3151441 | WASHER $\varnothing 22 \times 16.2 = 1.5$ CU | 15/12/2009- |
| 003 | 019 | 32V5740 | MAGNETIC MICROSWITCH | 15/12/2009- |
| 003 | 020 | 3233740 | PUSH BUTTON | 15/04/2013- |
| 003 | 021 | 3215050 | CONNECT MF 3/8" - M9x1 | 22/01/2013- |
| 003 | 022 | 36Q1171 | LOCKNUT M16X1.5 | 15/12/2009- |
| 003 | 024 | 32X0140 | GROMMET $\varnothing 13,5 - \varnothing 25$ | 15/12/2009- |
| 003 | 025 | 32X0200 | GROMMET $\varnothing 7.5 - \varnothing 11.5$ | 15/12/2009- |
| 003 | 026 | 36E2490 | GUARD | 20/01/2012- |
| 003 | 027 | 6300860 | NOT VAPOR INFILTRATION FX101 | 01/09/2012- |
| 003 | 028 | 3233750 | ASSEMBLY SUPPORT | 15/04/2013- |
| 003 | 029 | 3233760 | 1NO CONTACT | 15/04/2013- |
| 004 | 001 | 6300918 | DOOR INSIDE GLASS ASS.Y | 02/10/2013- |
| 004 | 002 | 6300711 | DOOR OUTSIDE GLASS ASS.Y | 15/12/2009- |
| 004 | 004 | 3008810 | MAGNET | 15/12/2009- |
| 004 | 005 | 3077271 | FRONT GASKET 10.10 | 01/07/2011- |
| 004 | 006 | 3085860 | HINGE | 15/12/2009- |
| 004 | 008 | 3088481 | OVEN DOOR LOCK | 08/02/2011- |
| 004 | 009 | 3104152 | PLUG | 24/10/2012- |
| 004 | 010 | 3104170 | TRAY | 15/12/2009- |
| 004 | 011 | 3104202 | HANDLE | 24/10/2012- |
| 004 | 012 | 3108262 | PLUG | 24/10/2012- |
| 004 | 013 | 3108730 | DOOR BOTTOM HINGE | 15/12/2009- |
| 004 | 014 | 3108740 | BOTTOM DOOR SUPPORT | 15/12/2009- |
| 004 | 015 | 3108760 | DOOR TOP HINGE | 15/12/2009- |
| 004 | 016 | 3238750 | PIN | 22/07/2014- |
| 004 | 017 | 3115570 | WASHER | 15/12/2009- |
| 004 | 018 | 3116521 | GUTTER | 15/12/2009- |
| 004 | 019 | 3120060 | WASHER | 15/12/2009- |
| 004 | 023 | 31A0560 | STEEL SCREW M6X10 | 15/12/2009- |

| Page | Pos | Code | Description | Info |
|------|-----|---------|--|-------------|
| 004 | 024 | 36D7062 | PIN | 15/12/2009- |
| 004 | 025 | 36E2781 | DOOR GUARD | 01/07/2011- |
| 004 | 026 | 36G5320 | SPRING | 15/12/2009- |
| 004 | 027 | 6300812 | OVEN DOOR ASSEMBLY | 01/07/2011- |
| 004 | 028 | 3171920 | BUSHING | 25/01/2010- |
| 004 | 029 | 6300798 | Glass Lock | 01/07/2011- |
| 004 | 030 | 36E2490 | GUARD | 22/07/2014- |
| 005 | 001 | 6028960 | BREATHER VAPORS + BUTTERFLY VALVE ASSEMBLY FX101 | 01/08/2012- |
| 005 | 002 | 3196210 | EXTRACTION PIPE ASSEMBLY | 24/01/2012- |
| 005 | 003 | 131AA12 | RUBBER HOSE Ø17 Ø10 X H ² O | 15/12/2009- |
| 005 | 005 | 3032680 | "SOLENOID VALVE 3/4" 1IN-1OUT" | 15/12/2009- |
| 005 | 006 | 3032880 | CONNECTOR | 15/12/2009- |
| 005 | 007 | 3032890 | CONNECTOR | 15/12/2009- |
| 005 | 008 | 3032900 | SPACER | 15/12/2009- |
| 005 | 009 | 3032940 | JET | 15/12/2009- |
| 005 | 010 | 3278360 | FILTER | 13/02/2015- |
| 005 | 011 | 3041830 | PRESSURESTAT | 15/12/2009- |
| 005 | 012 | 3045960 | GASKET | 15/12/2009- |
| 005 | 013 | 3051370 | SLEEVE F3/4 M1/2 | 15/12/2009- |
| 005 | 014 | 3089280 | DRAIN TRAP | 15/12/2009- |
| 005 | 015 | 3113840 | INSULANTING PANEL | 15/12/2009- |
| 005 | 016 | 3115260 | GASKET | 15/12/2009- |
| 005 | 019 | 3215240 | DRAIN PIPE | 01/09/2012- |
| 005 | 020 | 3120710 | PIPE | 15/12/2009- |
| 005 | 021 | 3140230 | 12/20 PIPE CLAMP | 15/12/2009- |
| 005 | 022 | 3152360 | WASHER 3/8" 3/8" Ø22-Ø17.2=1.5 CU/NI | 15/12/2009- |
| 005 | 024 | 32V5750 | THERMAL RESISTOR, PT1000 | 15/12/2009- |
| 005 | 025 | 32V5780 | CYCLE PROGRAMMER | 15/12/2009- |
| 005 | 026 | 33D1650 | "PRES. REDUC. VAL. F-F Ø 1/2" "" | 15/12/2009- |
| 005 | 027 | 33D1680 | MANOMETRE 0-40BAR M1/8 | 15/12/2009- |
| 005 | 028 | 33D2470 | SOL. VALVE SUPP. | 15/12/2009- |
| 005 | 029 | 33M0350 | PIPE | 15/12/2009- |
| 005 | 030 | 33Q2500 | NIPPLE 1/2"-3/4" | 15/12/2009- |
| 005 | 031 | 33Q4860 | H2O FILTER | 15/12/2009- |
| 005 | 033 | 36A3401 | BUTTERFLY VALVE | 04/12/2013- |
| 005 | 034 | 36E2990 | GASKET | 15/12/2009- |
| 005 | 035 | 36E3040 | "M" 1" PLUG" | 15/12/2009- |
| 005 | 036 | 36E3320 | SIPHON GASKET | 15/12/2009- |
| 005 | 037 | 36E3550 | WASHER | 15/12/2009- |
| 005 | 038 | 36Q1171 | LOCKNUT M16X1.5 | 15/12/2009- |
| 005 | 039 | 37Q2840 | GASKET | 15/12/2009- |
| 005 | 040 | 6019290 | WATER INTAKE UNIT | 15/12/2009- |
| 005 | 041 | 6020080 | WATER INTAKE UNIT | 15/12/2009- |
| 005 | 042 | 3097880 | FLAT BRACKET | 15/12/2009- |
| 005 | 043 | 3277540 | WATER INLET PIPE ASS.Y | 08/10/2014- |
| 005 | 044 | 3157160 | STOP GASKET | 15/12/2009- |
| 005 | 045 | 33Q5840 | "PLUG 1/8" "" | 15/12/2009- |
| 005 | 046 | 3032690 | BRACKET | 15/12/2009- |
| 005 | 047 | 33Q4820 | NOZZLE | 15/12/2009- |
| 005 | 048 | 3079680 | "O" RING | 31/08/2012- |

| Page | Pos | Code | Description | Info |
|------|-----|---------|---------------------------------|-------------|
| 006 | 002 | 3100930 | RELAY | 15/12/2009- |
| 006 | 003 | 3100940 | RELAY BF09 230V- 50/60Hz-25(9)A | 15/12/2009- |
| 006 | 005 | 32D0870 | TERMINAL CLAMP | 15/12/2009- |
| 006 | 006 | 32D0950 | LIVE TERMINAL | 15/12/2009- |
| 006 | 007 | 32D0960 | TERMINAL END COVER | 15/12/2009- |
| 006 | 008 | 32D0970 | GROUND TERMINAL | 15/12/2009- |
| 006 | 009 | 32D1450 | TERMINAL | 15/12/2009- |
| 006 | 010 | 32D1780 | FAIRLEAD | 15/12/2009- |
| 006 | 011 | 32V5770 | TRANSFORMER | 15/12/2009- |
| 006 | 012 | 32V6200 | FUSE TERMINAL 10x38 | 15/12/2009- |
| 006 | 013 | 32V6210 | FUSE | 15/12/2009- |
| 006 | 015 | 3156680 | RELAY | 15/12/2009- |
| 006 | 016 | 3100950 | INDEP. ASSEMBLY SUPPORT | 15/12/2009- |
| 007 | 002 | 6300733 | MOTOR ASS.Y | 15/12/2009- |
| 007 | 003 | 3016470 | SCREW M10X35 | 15/12/2009- |
| 007 | 006 | 3081530 | FAN | 15/12/2009- |
| 007 | 007 | 3084430 | SCREW TE M6 Ø16x23 | 15/12/2009- |
| 007 | 008 | 3137481 | | 05/11/2013- |
| 007 | 009 | 3103750 | MOTOR | 15/12/2009- |
| 007 | 014 | 3115410 | FAN | 15/12/2009- |
| 007 | 015 | 3115420 | WASHER | 15/12/2009- |
| 007 | 016 | 3177340 | 16.4KW230V Heater 16.4KW230V | 02/12/2013- |
| 007 | 020 | 3121930 | BEARING | 15/12/2009- |
| 007 | 021 | 3278380 | M6 TRAY HOLDER PIN | 11/02/2015- |
| 007 | 022 | 36E3160 | RING GASKET SUPPORT | 15/12/2009- |
| 007 | 023 | 36H0890 | BUSHING | 15/12/2009- |
| 007 | 025 | 37Q0250 | GASKET | 15/12/2009- |
| 007 | 026 | 37Q3220 | GASKET | 15/12/2009- |
| 007 | 027 | 3137011 | INPUT WATER TRAY | 27/09/2013- |
| 007 | 028 | 6300829 | PAIR OF POLISHED TRAY HOLDERS | 15/12/2009- |
| 007 | 028 | 6300864 | PAIR OF TRAY HOLDERS | 15/12/2009- |