

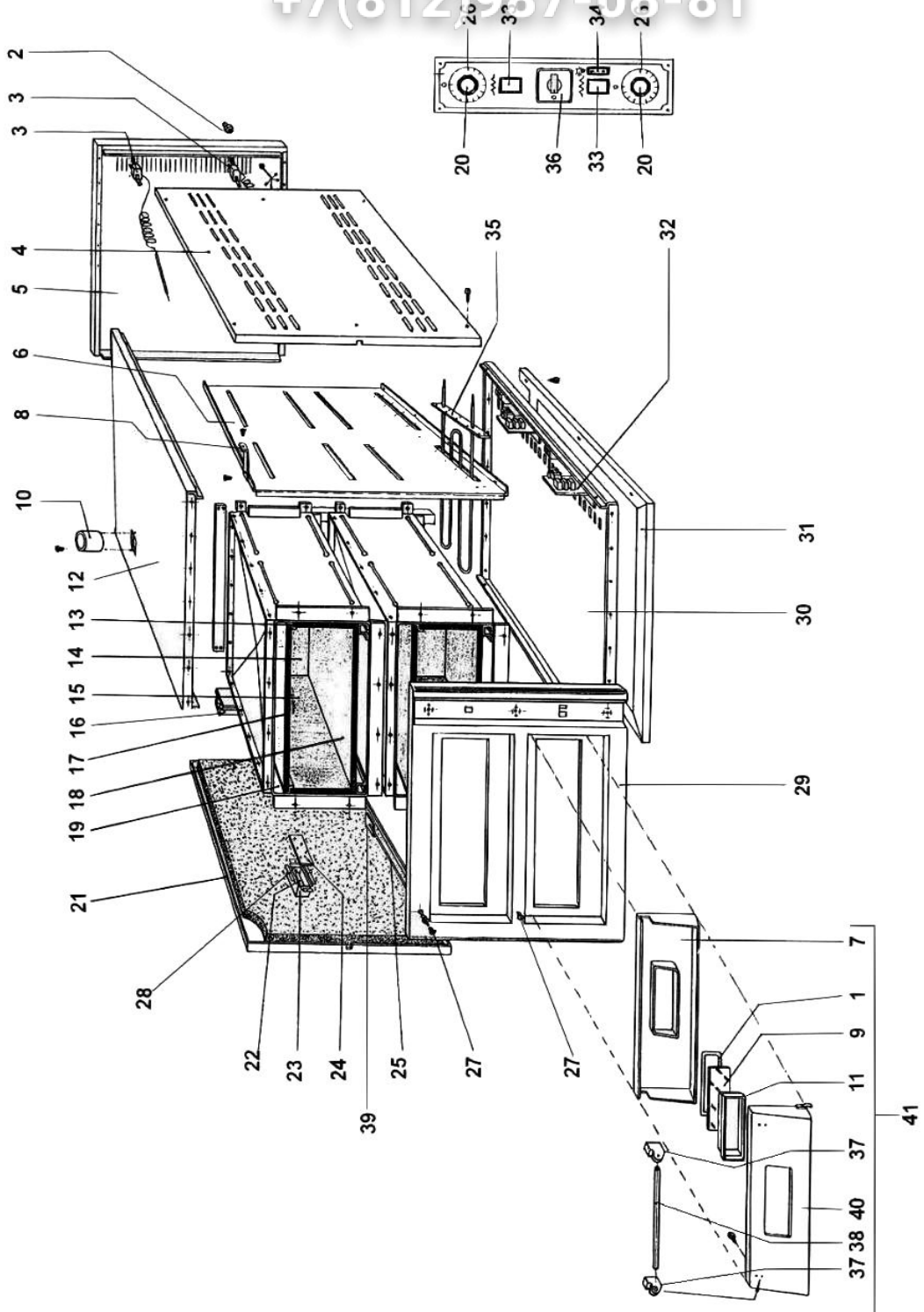
Зип Ощепит

vsezip.ru

+7(812)987-08-81

Forno elettrico mod.FM-FMS4-4+4-6-6+6-9

Electric oven mod.FM-FMS4-4+4-6-6+6-9



FORNO ELETTRICO MOD.FM-FMS4-44-6-66-9
ELECTRIC OVEN MOD.FM-FMS4-44-6-66-9

Rif No	Codice Code	Caratteristiche Characteristics	Descrizione Description
1	CO3615		Guarnizione Gasket
2	SL1021	PG21	Pressavviti Cable clamp
3	CO3649		Termos afro Termos afro
4	CO3550	(FM-FMS4)	Fianco destro Right side
4	CO3551	(FM-FMS44)	Fianco destro Right side
4	CO3552	(FM-FMS6)	Fianco destro Right side
4	CO3553	(FM-FMS66)	Fianco destro Right side
4	CO3655	(FM-FMS9)	Fianco destro Right side
5	CO3531	(FM-FMS4-6)	Fondo Bottom
5	CO3532	(FM-FMS44-66)	Fondo Bottom
5	CO3633	(FM-FMS9)	Fondo Bottom
6	CO3578	(FM-FMS4)	Divisorio Dividing head
6	CO3579	(FM-FMS44)	Divisorio Dividing head
6	CO3580	(FM-FMS6)	Divisorio Dividing head
6	CO3581	(FM-FMS66)	Divisorio Dividing head
6	CO3656	(FM-FMS9)	Divisorio Dividing head
7	CO3613	(FM-FMS4-44-6-66)	Sportello Door
7	CO3643	(FM-FMS9)	Sportello Door
8	CO3565		Staffa Bracket
9	CO1200		Vetro Glass
10	CO3526		Convogliatore Conveyor
11	CO3617		Distanziale Spacer
12	CO3523	(FM-FMS4-44)	Coperchio Cover
12	CO3524	(FM-FMS6-66)	Coperchio Cover
12	CO3632	(FM-FMS9)	Coperchio Cover
13	CO3657	(FM-FMS4-44)	Piana Stone
13	CO3658	(FM-FMS6-66)	Piana Stone
13	CO3648	(FM-FMS9)	Piana Stone
14	CO3645	(FM-FMS4-44-6-66)	Piana Stone
14	CO3659	(FM-FMS9)	Piana Stone
15	CO3665	(FM-FMS4-44)	Piana Stone
15	CO3646	(FM-FMS6-66)	Piana Stone
15	CO3666	(FM-FMS9)	Piana Stone
16	CO3528	(FM-FMS4-44)	Canna fumaria Chimney
16	CO3529	(FM-FMS6-66)	Canna fumaria Chimney
16	CO3530	(FM-FMS9)	Canna fumaria Chimney
17	CO3667	(FM-FMS4-44)	Piana Stone
17	CO3668	(FM-FMS6-66)	Piana Stone
17	CO3669	(FM-FMS9)	Piana Stone
18	CO3660	(FM-FMS4-44)	Piana Stone
18	CO3644	(FM-FMS6-66)	Piana Stone
18	CO3647	(FM-FMS9)	Piana Stone
19	CO3537	(FM-FMS4-44)	Camera Chamber
19	CO3538	(FM-FMS6-66)	Camera Chamber
19	CO3634	(FM-FMS9)	Camera Chamber
20	CO3601		Termostato Thermostat
21	CO3557	(FM-FMS4)	Fianco sinistro Left side
21	CO3558	(FM-FMS44)	Fianco sinistro Left side
21	CO3559	(FM-FMS6)	Fianco sinistro Left side
21	CO3560	(FM-FMS66)	Fianco sinistro Left side
21	CO3661	(FM-FMS9)	Fianco sinistro Left side
22	CO1272	230V/1Ph/50-60Hz	Lampada Lamp
22	CO3534	01/01/01 f.p.(*)	Lampada Lamp
23	CO3536		Scatola Box
24	CO3662		Vetro Glass
25	CO3502	(FM-FMS4-44)	Asta Rod
25	CO3503	(FM-FMS6-66)	Asta Rod
25	CO3504	(FM-FMS9)	Asta Rod
26	CO3611		Maniglia Handle
27	CO3501		Pomello Knob
28	CO3535		Supporto Support
29	CO3506	Stainless steel(FM-FMS4-6)	Copertura Covering
29	CO3507	Stainless steel(FM-FMS44-66)	Copertura Covering
29	CO3508	Rustic (FM-FMS4-6)	Copertura Covering
29	CO3509	Rustic (FM-FMS44-66)	Copertura Covering
29	CO3629	Stainless steel(FM-FMS9)	Copertura Covering
29	CO3630	Rustic (FM-FMS9)	Copertura Covering
30	CO3575	(FM-FMS4-44)	Fondo Bottom
30	CO3576	(FM-FMS6-66)	Fondo Bottom
30	CO3637	(FM-FMS9)	Fondo Bottom
31	CO3572	(FM-FMS4-44)	Supporto Support
31	CO3573	(FM-FMS6-66)	Supporto Support
31	CO3636	(FM-FMS9)	Supporto Support
32	CO3569	(FM-FMS4-44)	Scheda elettronica Electronic card
32	CO3570	(FM-FMS6-66-9)	Scheda elettronica Electronic card

(*): fuori produzione / out of production

FORNO ELETTRICO MOD.FM-FMS4-44-6-66-9
ELECTRIC OVEN MOD.FM-FMS4-44-6-66-9

Rif No	Codice Code	Caratteristiche Characteristics	Descrizione Description
33	CO3610		Lampada Lamp
34	CO3608		Interruttore Switch
35	CO3555	(FM-FMS4-6-44-66)	Resistenza Resistance
35	CO3635	(FM-FMS9)	Resistenza Resistance
36	CO3599	3Ph+1N	Interruttore Switch
36	CO3664	1Ph+1N	Interruttore Switch
37	CO3587		Staffa Bracket
38	CO3585	(FM-FMS4-6-44-66)	Maniglia Handle
38	CO3663	(FM-FMS9)	Maniglia Handle
39	CO3516		Staffa Bracket
40	CO3591	Stainless steel(FM-FMS4-6-44-66)	Copertura Covering
40	CO3639	Stainless steel (FM-FMS9)	Copertura Covering
40	CO3593	Rustic (FM-FMS4-6-44-66)	Copertura Covering
40	CO3641	Rustic (FM-FMS9)	Copertura Covering
41	CO3590	Stainless steel(FM-FMS4-6-44-66)	Sportello Door
41	CO3638	Stainless steel (FM-FMS9)	Sportello Door
41	CO3592	Rustic (FM-FMS4-6-44-66)	Sportello Door
41	CO3640	Rustic (FM-FMS9)	Sportello Door

(*): fuori produzione / out of production