

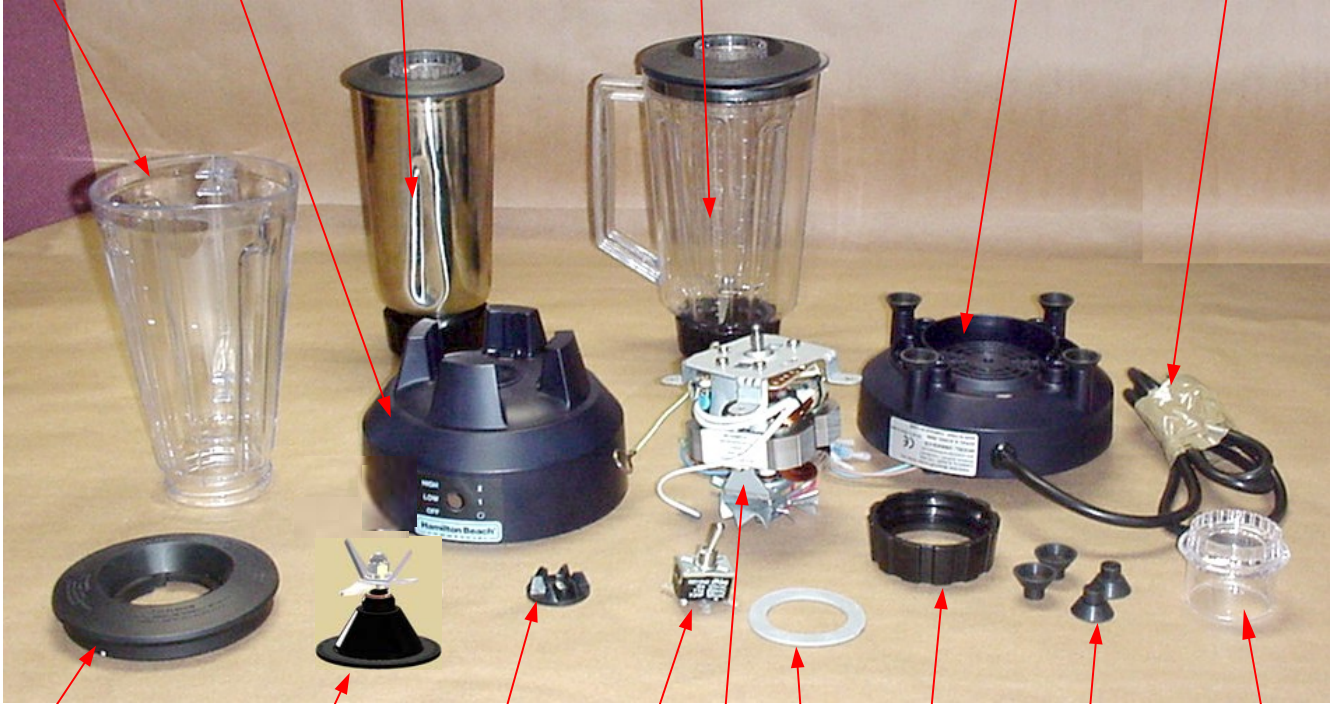
# Replacement Parts Diagram ПИТ

## Model HBB908-CE Series A-C

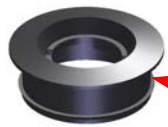
**PROPRIETARY RIGHTS NOTICE** This document and all information contained within it is the property of Hamilton Beach Brands, Inc. (HBB). It is confidential and proprietary and has been provided to you for a limited purpose. It must be returned or destroyed upon request. Disclosure, reproduction or use of this document and any information contained within it, in full or in part, for any purpose is forbidden without the prior written consent of HBB. No photographs may be taken of any article fabricated or assembled from this document without the prior written consent of HBB.

+7(812)987-08-81

- Container  
990035500
- Upper Housing  
990033400
- SS Container Kit\*  
6126-HBB909-CE
- Plastic Container Kit\*  
6126-HBB908-CE
- Housing, Lower  
990065800
- Cord Set  
990048000



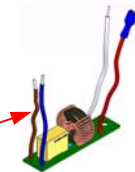
- Container Cover  
(for Plastic Container)  
990035400
- Cutter Assembly  
990079500
- Clutch  
990035800
- Switch  
990033500
- Gasket  
990035600
- Base Ring  
990047900
- Feet (Qty 4)  
990033900
- Filler Cap  
990035300



Container Cover  
(for SS Container)  
990057600

Motor & Fuse  
990058500


RFI Board  
990058700



Cutter Kit  
98908



**\*Container Kits Include: Container, Container Cover, Filler Cap, Cutter Assembly, Gasket, Base Ring, and Clutch.**

 4421 Waterfront Drive Glen Allen, VA 23060	Revision Description:		Changed Cutter Assembly part number.					
	Request Number:	HQE-6672	Revision Date:	7/16/08	Approved by:			
	Issue Code(s):	CS, SP	Page:	1 of 1	Document #:	<b>5100157XX</b>	Rev:	<b>G</b>