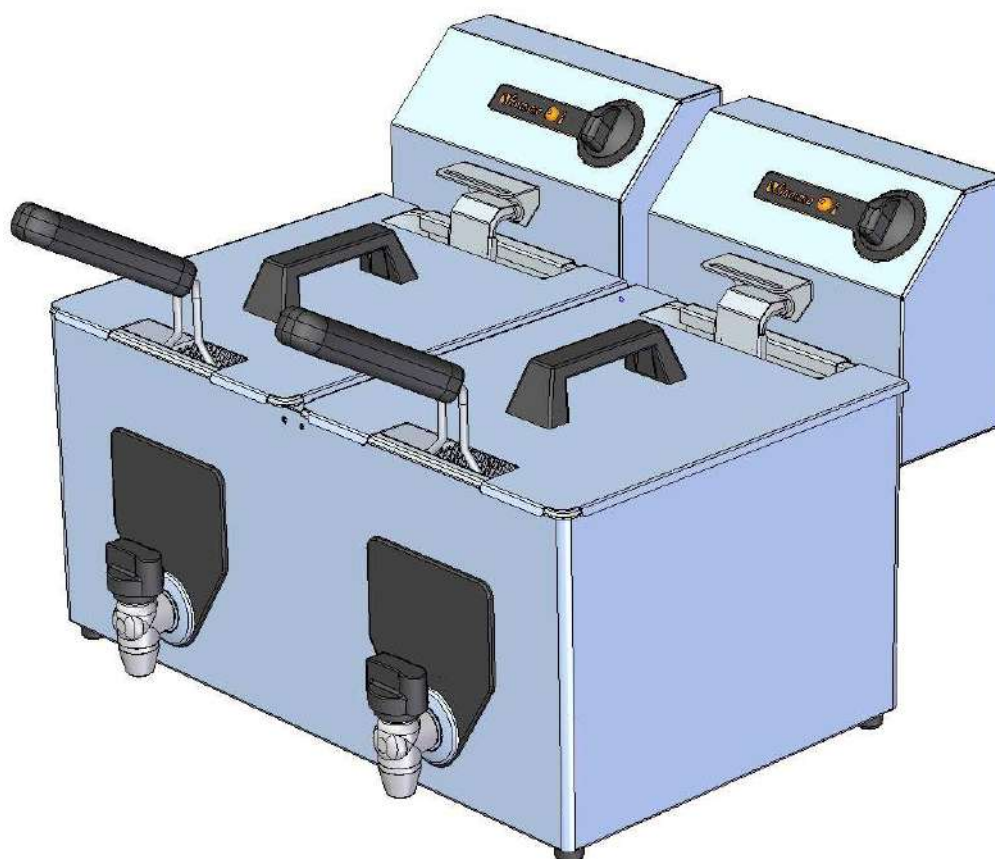


FRITADEIRA FF10+10 NV FRYER FF10+10 NV



FRITADEIRA FF10+10 NV FIAMMA - 2.0.088.1000 FRYER FF10+10 NV FIAMMA

POTÊNCIA 7000 W (3500+3500 W)
POWER

TENSÃO DE ALIMENTAÇÃO 220-240V/50Hz
POWER SUPPLY

TERMOSTATO REGULÁVEL 90-180 °C
ADJUSTABLE THERMOSTAT

PRODUTIVIDADE 13+13 kg/h
PRODUCTIVITY

PESO LIQUIDO 14 kg
NET WEIGHT

PESO BRUTO 15.5 kg
GROSS WEIGHT

DIMENSÕES (LxPxH) 525x475x375 mm
DIMENSIONS (LxPxH)

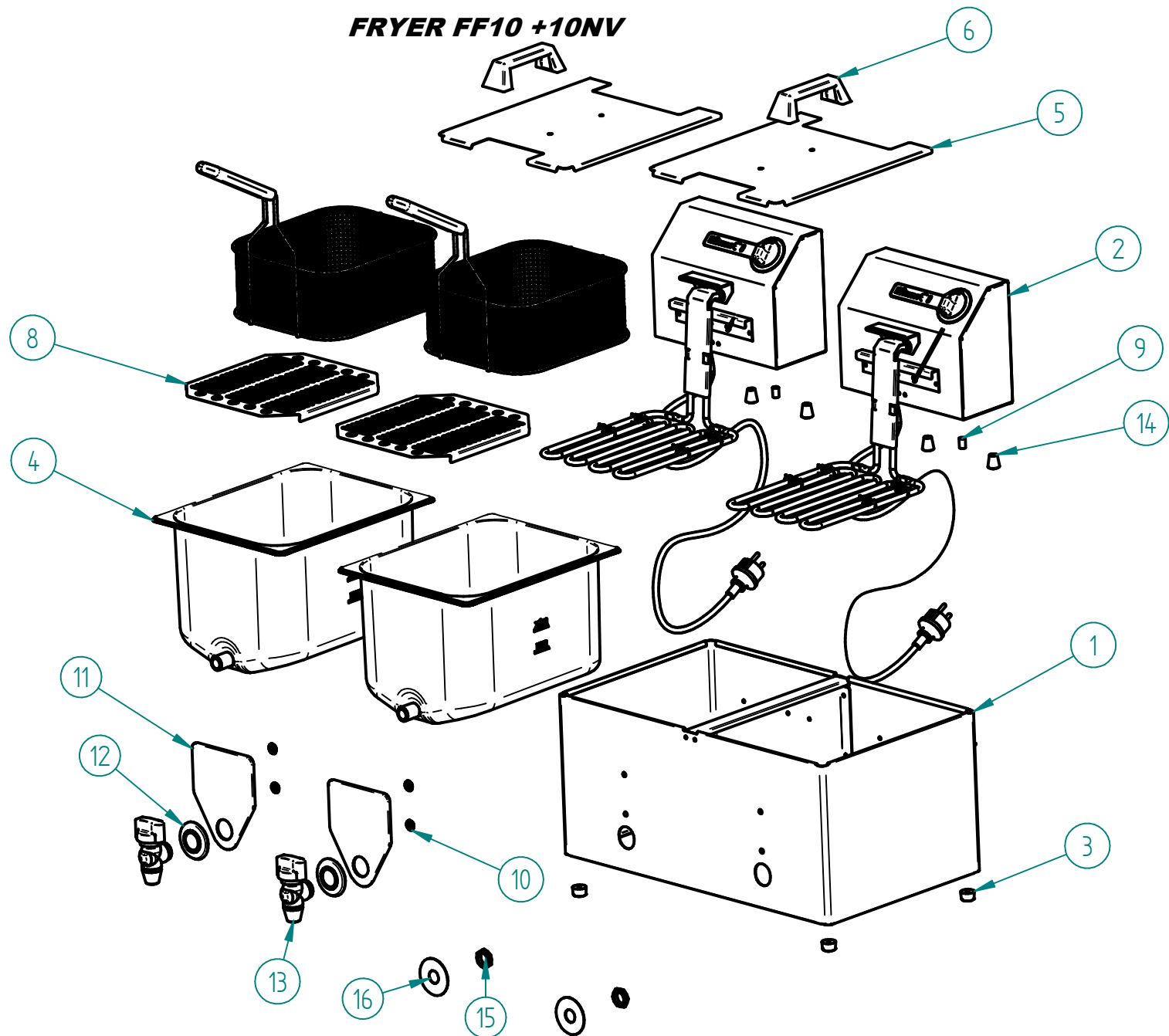
DIMENSÕES DA EMBALAGEM (LxPxH) 550x550x420 mm
PACKAGE DIMENSIONS

DIMENSÕES DO CESTO (LxPxH) 220x250x104 mm
BASKET DIMENSIONS

CAPACIDADE DE ÓLEO 8+8 L
OIL CAPACITY

FRITADEIRA FF10+10 NV

FRYER FF10 +10NV



LISTA DE COMPONENTES E ACESSÓRIOS
Spare parts list

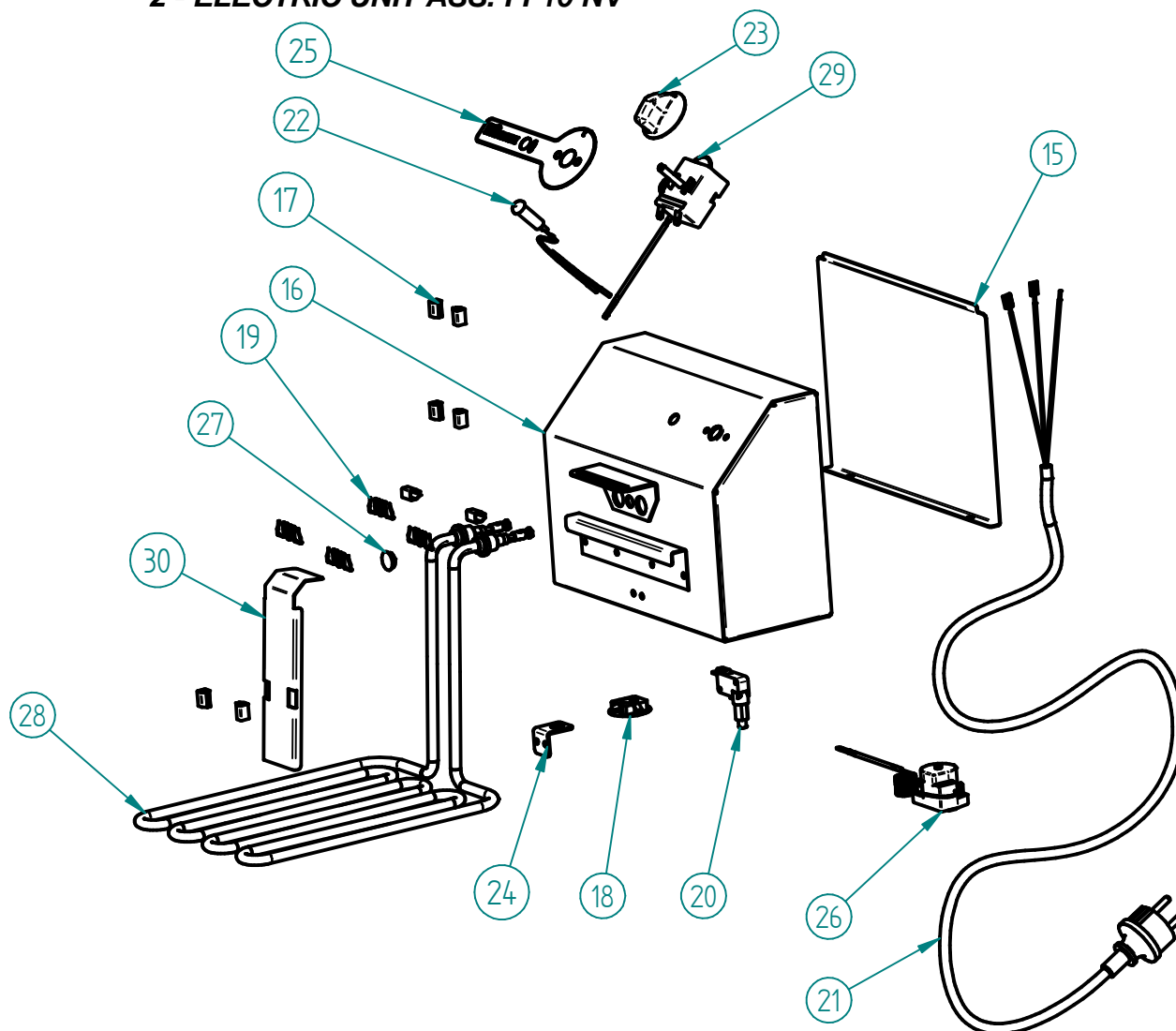
ITEM Nº	CÓDIGO	DESIGNAÇÃO	DESIGNATION	QUANT.
1	7.0.088.1005	BLINDAGEM CONJ. FF10+10 NV	SHIELDS ASS. FF10+10 NV	1
2	7.0.087.1000	CABEÇOTE MONTADO FF10 NV	ELECTRIC UNIT ASS. FF10 NV	2
3	4.2.000.9246	BATENTE PRETO Nº2	BLACK KNOCKER NR. 2	4
4	4.0.087.1029	CUBA GN1/2 H210mm C/ RACORD FF10 NV	TANK GN1/2 H210MM FF10 NV	2
5	7.0.085.1060	TAMPA CUBA FF6 NV / FF10 NV	TANK COVER FF6 NV / FF10 NV	2
6	4.1.000.6220	PEGADEIRA REF. 58 EM PVC	PVC HANDGRIP	2
7*	4.0.085.1031	CESTO CONJ. FF6 NV/FF10 NV	BASKET FF6 NV/FF10 NV	2
8	7.0.087.1070	GRELHA PROTECÇÃO RESIST. FF10 NV	HEATING ELEMENT PROTECTION GRID FF10 NV	2
9	4.0.028.0035	CASQUILHO GUIA TAB. SUP. PACIFIC	BUSHING GUIDE TRAY TOP PACIFIC	2
10	4.0.087.0040	ANILHA FIXAÇÃO RÁPIDA 6MM	FIXING RING 6MM	4
11	4.0.087.0034	PROTECÇÃO TERMICA TORNEIRA FF	THERMIC TAP PROTECTION	2
12	4.0.087.0032	ESPELHO CROMADO 3/4"	CHOMED MIRROR 3/4"	2
13	4.0.087.0030	TORNEIRA G1/2F	TAP G1/2F	2
14	4.0.085.0027	MANIPULO FRITADEIRAS (M5)	HANDLE (M5)	4
15	4.0.155.0015	PORCA G1/2 LATAO	BRASS NUT G1/2	2
16	7.0.087.1015	ANILHA PLANA 0.8X55X19.1 INOX	FLAT RING 0.8X55X19.1 INOX	2

FRITADEIRA FF10+10 NV

FRYER FF10 +10NV

2 - CABEÇOTE MONTADO FF10 NV - 7.0.087.1000

2 - ELECTRIC UNIT ASS. FF10 NV



LISTA DE COMPONENTES E ACESSÓRIOS

Spare parts list

ITEM Nº	CÓDIGO	DESIGNAÇÃO	DESIGNATION	QUANT.
15	7.0.085.0050	TAMPA CASTELO FF	COVER FOR ELECTRIC UNIT FF	1
16	7.0.085.1025	CASTELO CONJUNTO FF6 NV/FF10 NV	SHIELD OF ELECTRIC UNIT FF6 NV/ FF10 NV	1
17	4.0.085.0017	MOLA P/ CAPILARES	WIRE SPRING	8
18	4.2.000.9457	CERRA CABOS PA 107 - AD 003	CABLE FASTENER PA107 - AD 003	1
19	4.0.085.0114	MOLA ARAME P/ BOLBO	SPRING	4
20	4.0.085.0021	MICRO INTERRUPTOR RLP/A	MICRO SWITCH RLP/A	1
21	4.0.085.0070	CABO H07RN-F 3G1,5 - 1,5MT C/ FICHA+TERM.	CABLE H07RN-F 3G1,5 - 1,5MT W/ PLUG	1
22	4.0.085.0022	SINALIZADOR LARANJA TER. PONT. 250MM SL10207	ORANGE LED 250MM	1
23	4.0.075.0040	MANIPULO TEMPORIZADOR	BUTTON	1
24	7.0.085.1026	FIXADOR MICRO INTERRUPTOR FF NV	MICRO SWITCH FIXER	1
25	PAINEL PERSONALIZADO FIAMMA FCF	STICKER FCF FIAMMA	1	
26	4.0.085.0011	TERMOSTATO SEGURANÇA 230°	SAFETY THERMOSTAT 230°C	1
27	4.0.085.0035	TAPA FUROS Ø10MM	RUBBER COVER Ø10MM	1
28	4.0.087.1005	RESISTÊNCIA 3500W-230V FF10 NV	HEATING ELEMENT 3500W-230V FF10 NV	1
29	4.0.085.0008	TERMOSTATO REGULAVEL 175°	ADJUSTABLE THERMOSTAT 175°C	1
30	7.0.085.1067	BLINDAGEM CAPILARES FF NV	CAPILLARY SHIELD FF NV	1

FRITADEIRA FF10+10 NV

FRYER FF10 +10NV

ESQUEMA ELECTRICO
Electric Scheme

