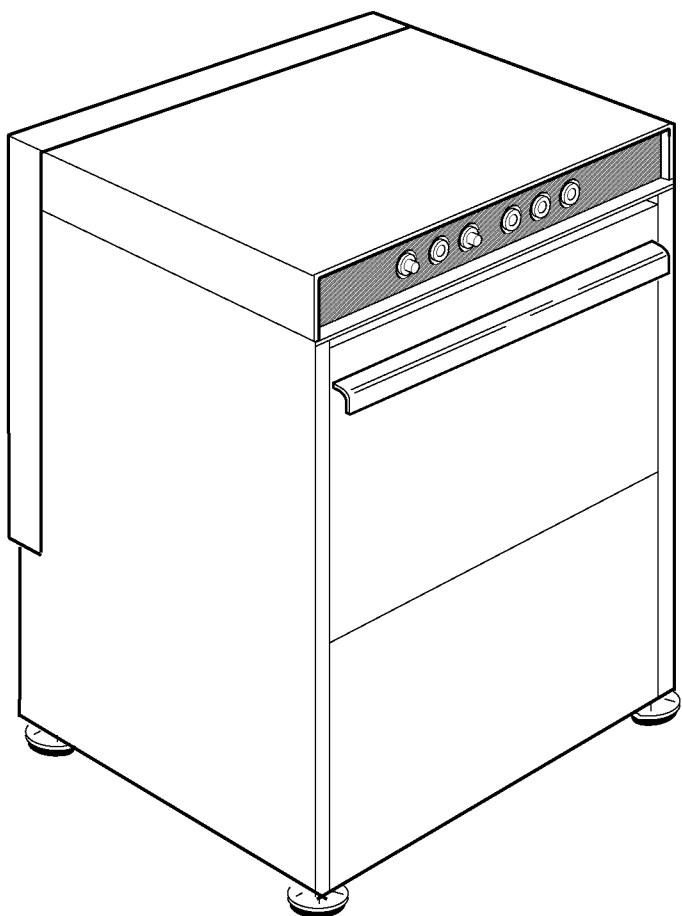


CATALOGO RICAMBI
SPARE PARTS
PIECES DETACHEES
ERSATZTEILE
LISTA DE RECAMBIOS

Зип Общепит

vsezip.ru

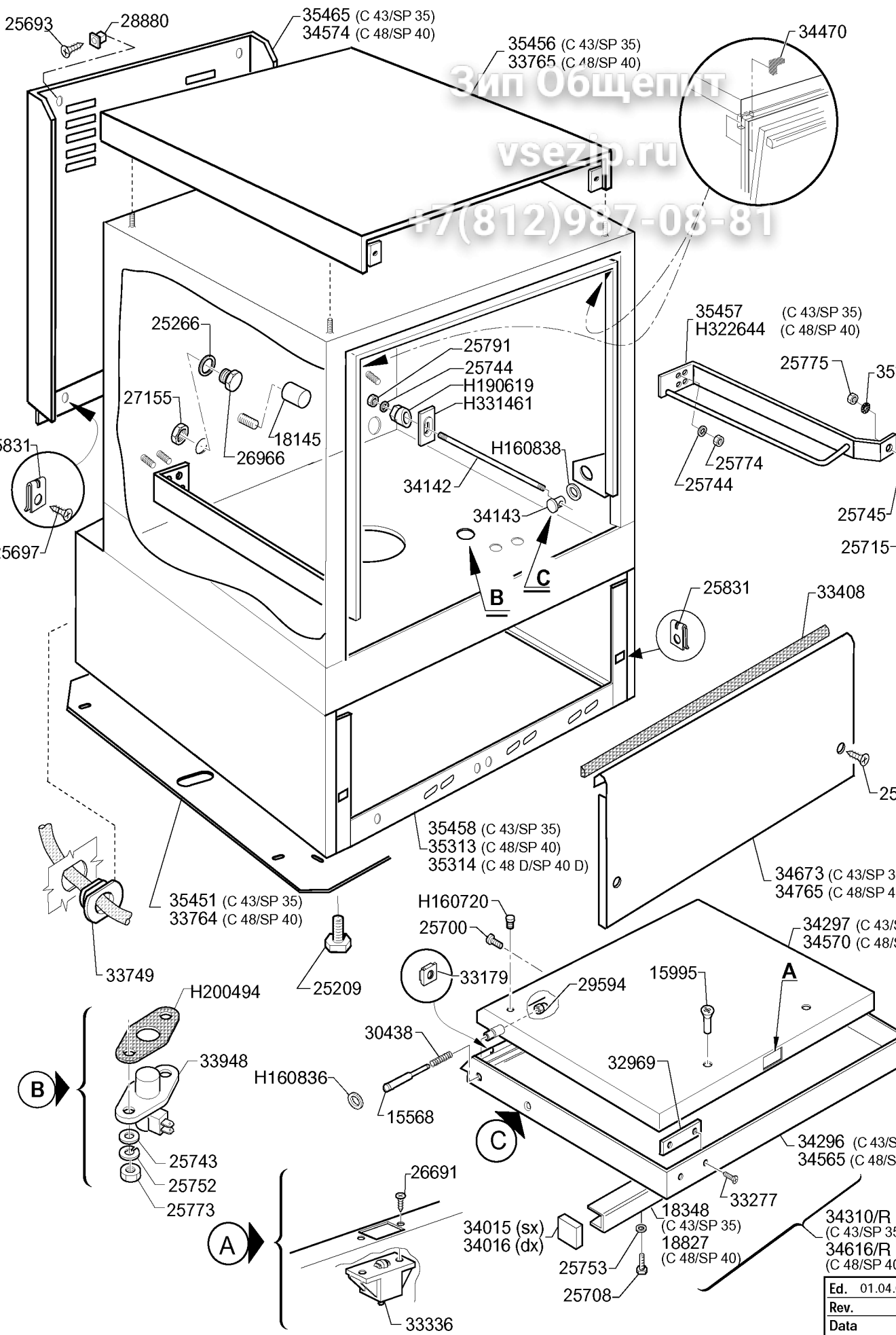
+7(812)987-08-81



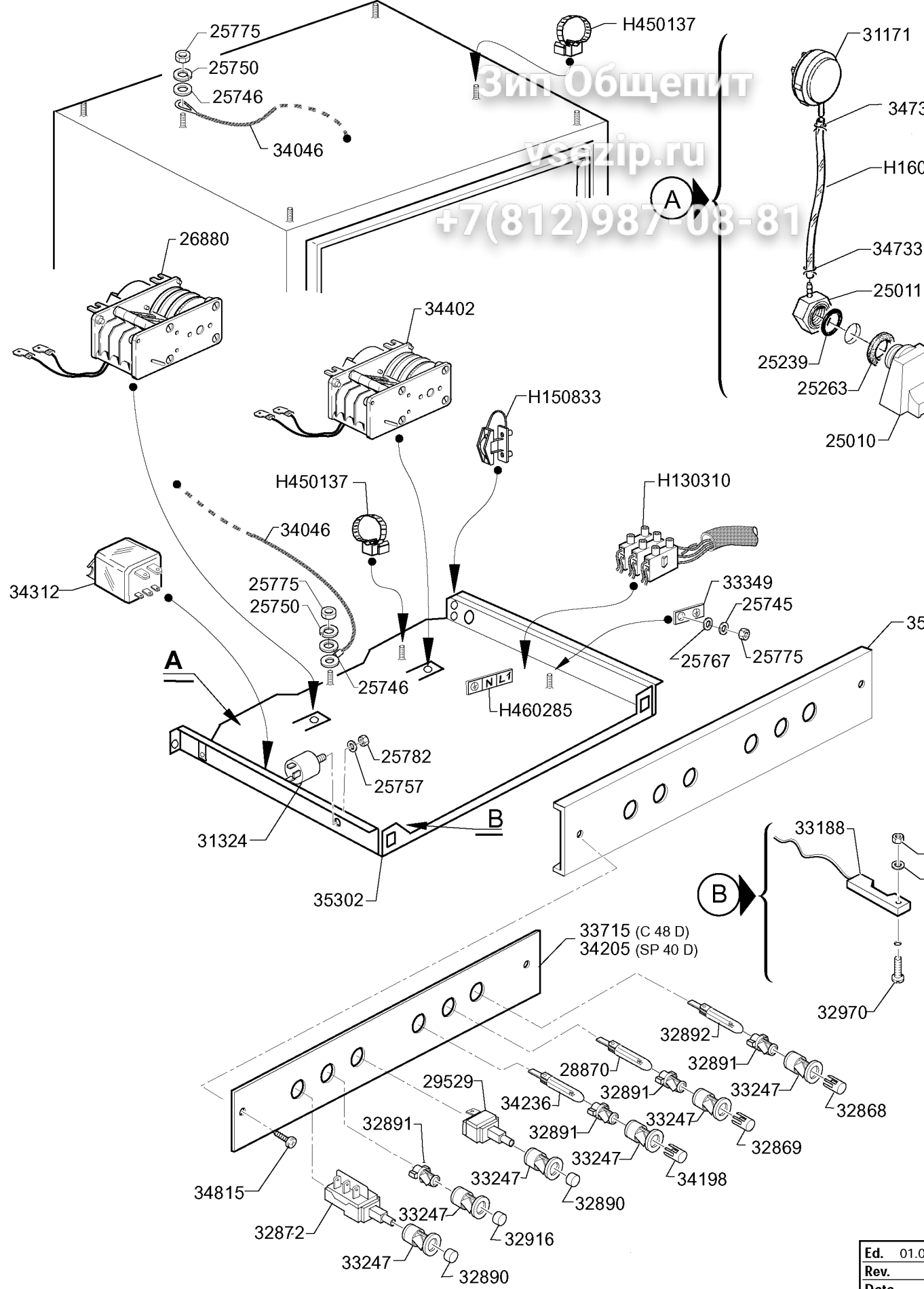
Lavastoviglie
Lavevaisselle
Geschirrspüler
Dishwashers
Lavavajillas

C/SP 2°

C/SP D 2°

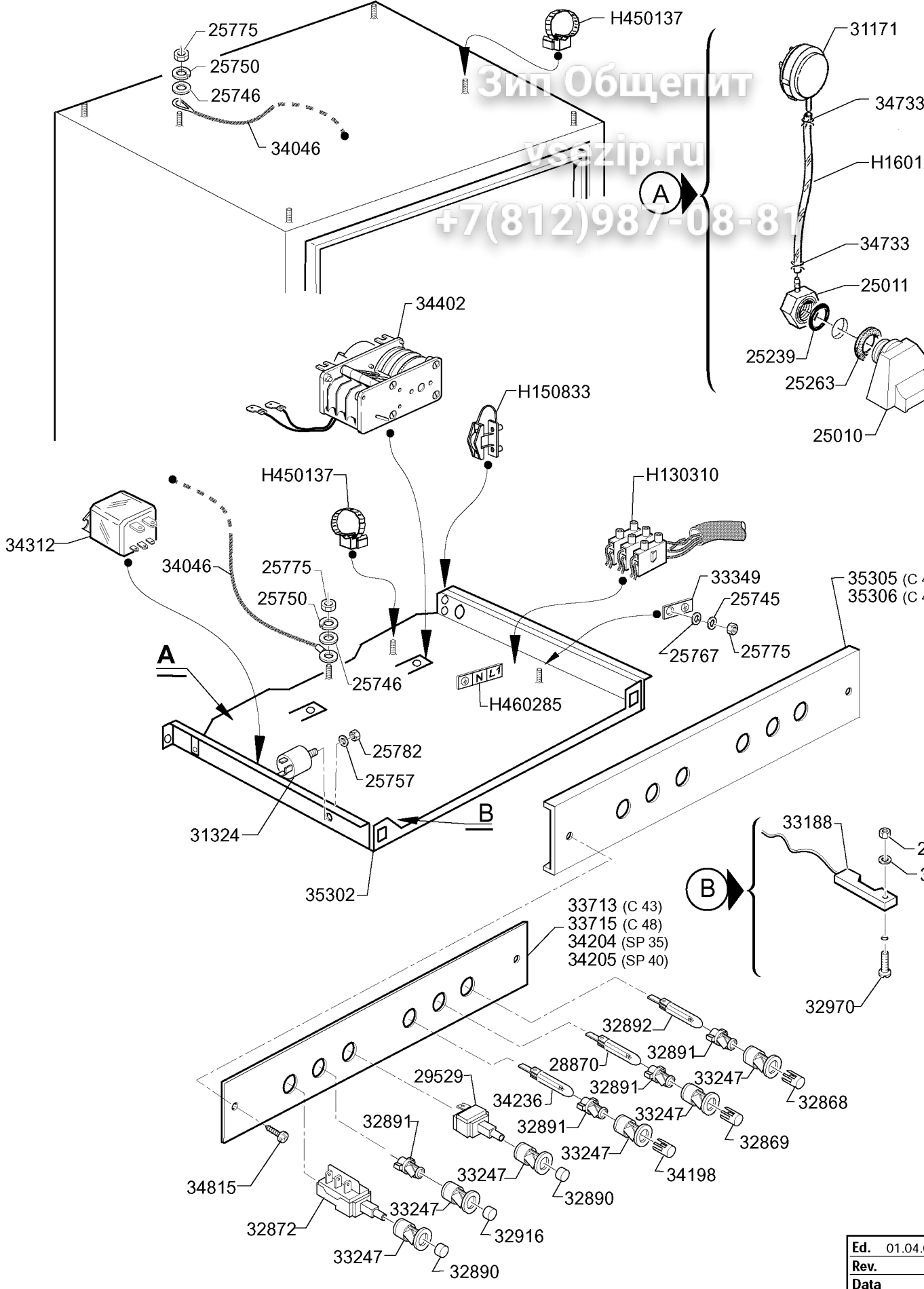


| | |
|------|--------|
| Ed. | 01.04. |
| Rev. | |
| Data | |



Вип Общепит
 vsezip.ru
 +7(812)987-08-81

| | |
|------|------|
| Ed. | 01.0 |
| Rev. | |
| Data | |



Зип Общепит
 vsezip.ru
 +7(812)987-08-81

| | |
|------|--------|
| Ed. | 01.04. |
| Rev. | |
| Data | |

Зип Общепит
vsezip.ru

+7(812)987-08-81

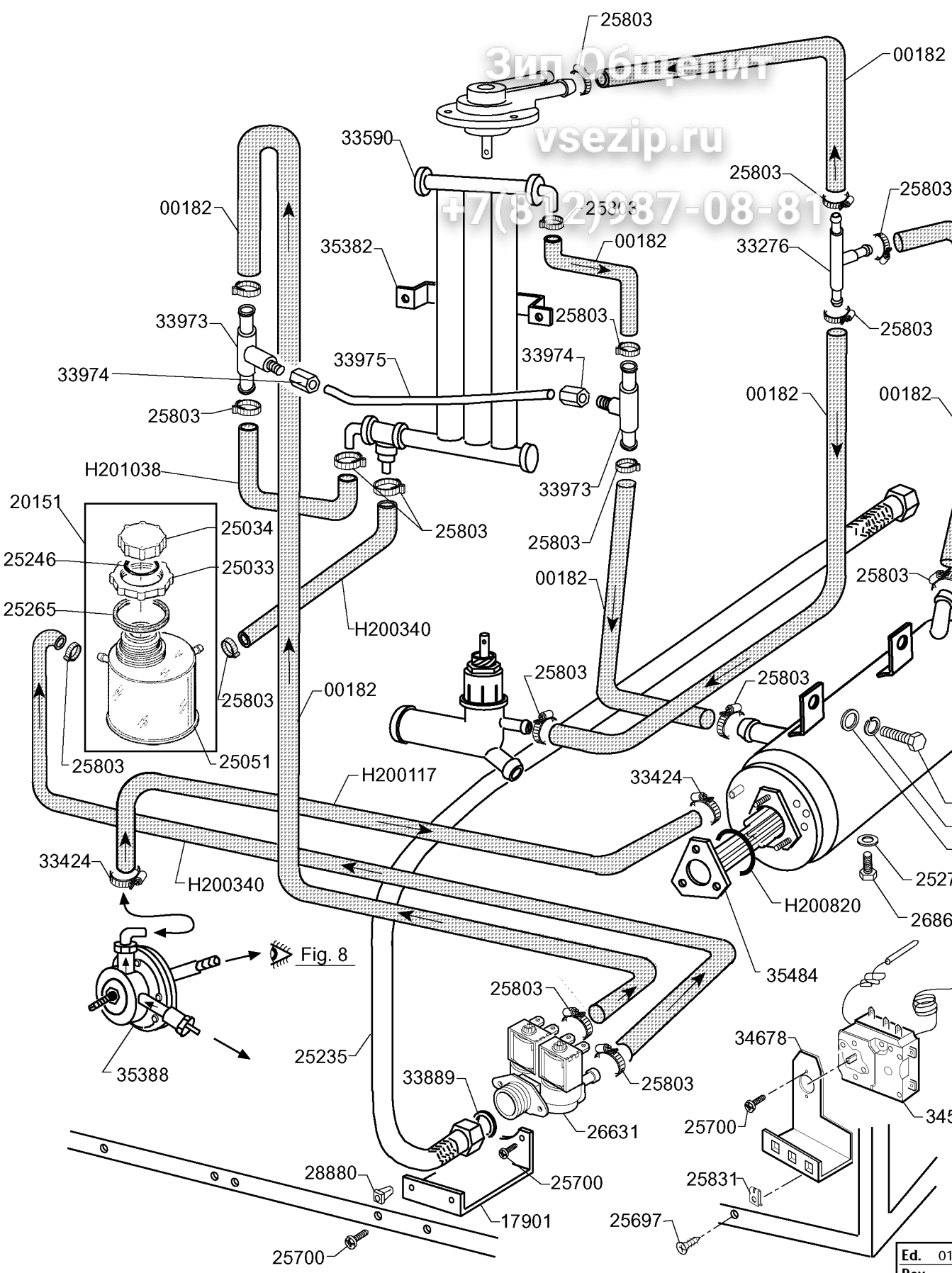
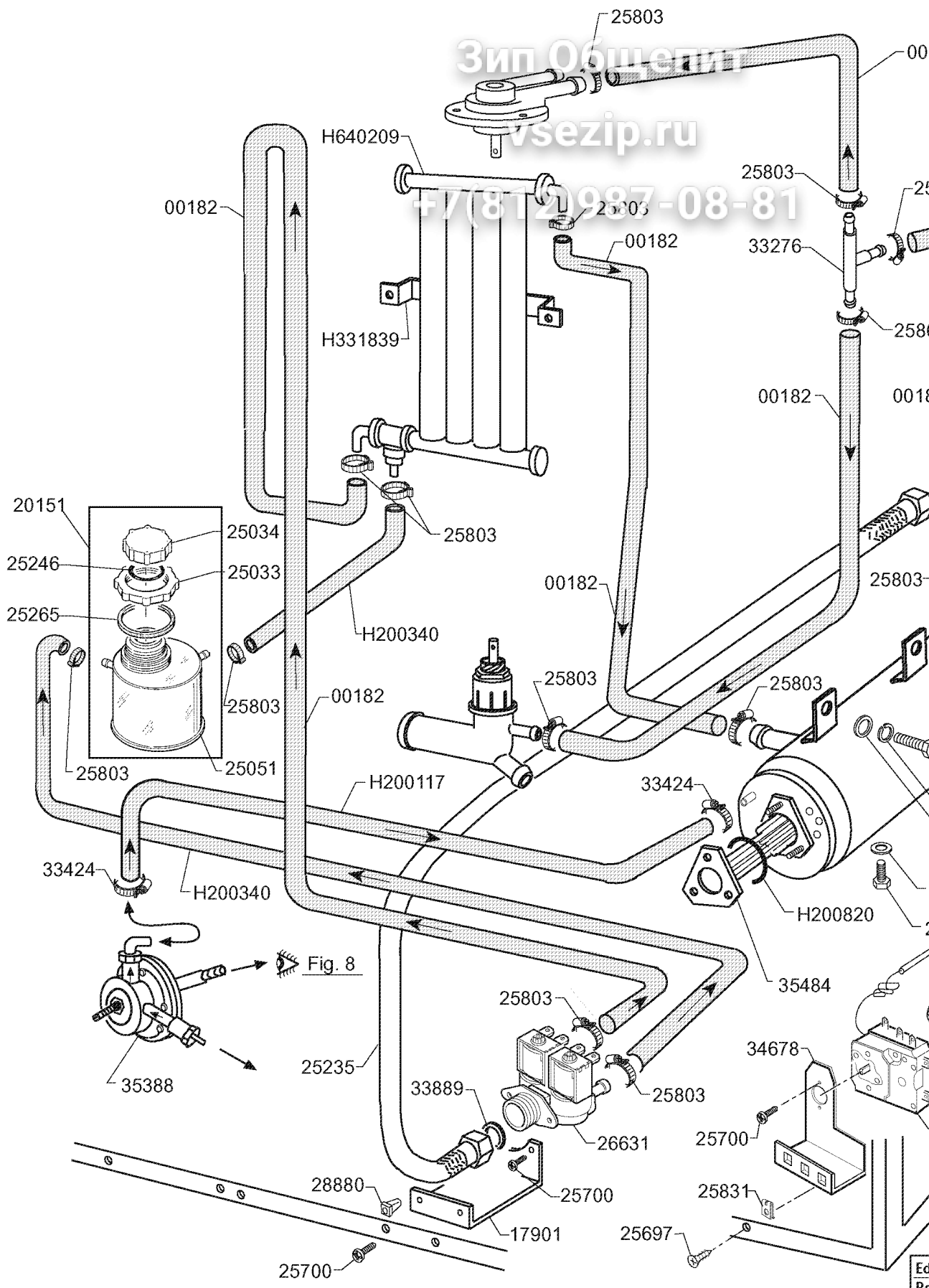


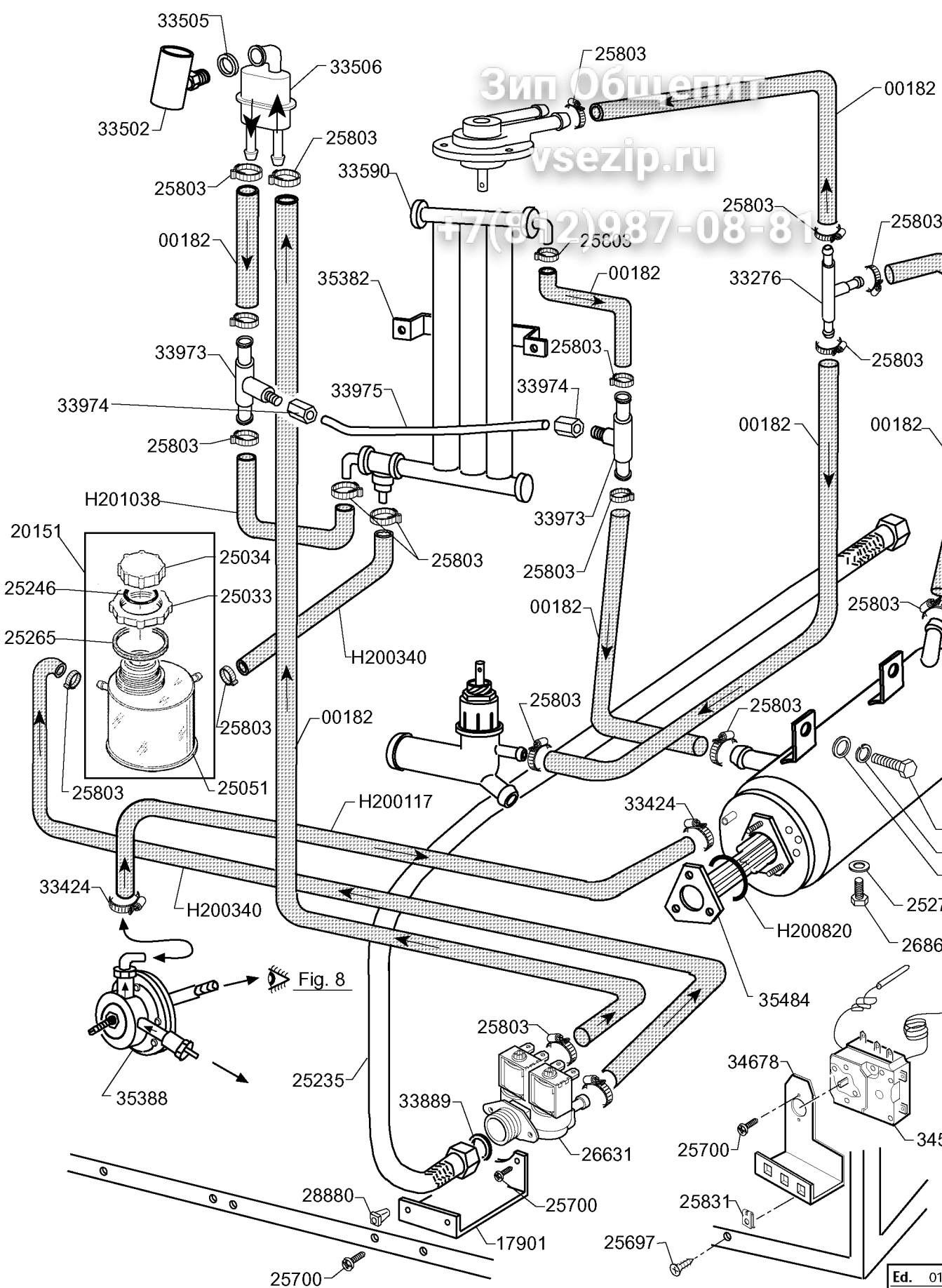
Fig. 8

| | |
|------|----|
| Ed. | 01 |
| Rev. | |
| Data | |

Зип Общепит
vsezip.ru

+7(812)987-08-81





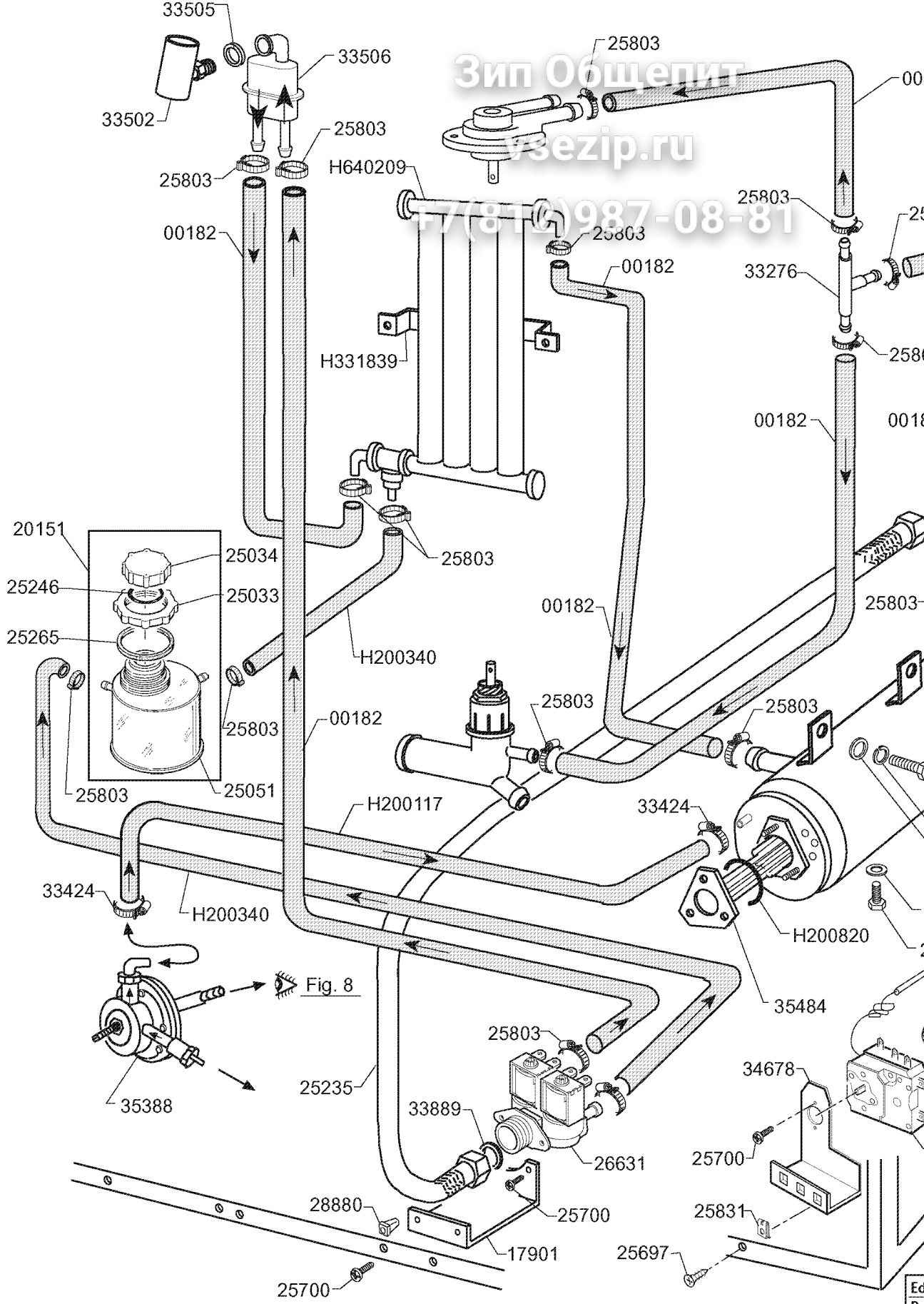
Зип Общепит
 vsezip.ru
 +7(812)987-08-81

Fig. 8

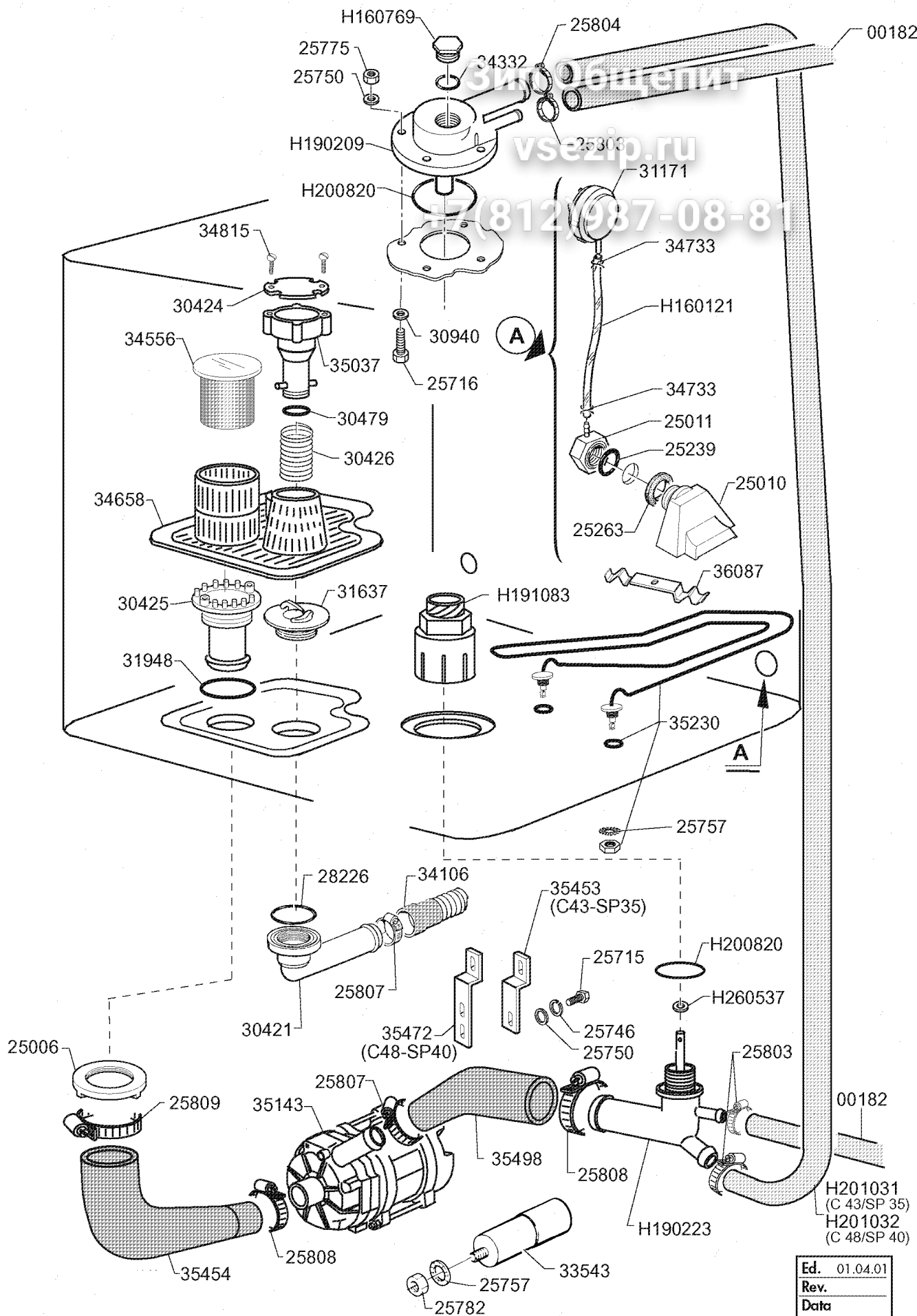
| | |
|------|----|
| Ed. | 01 |
| Rev. | |
| Data | |

Зип Общепит
vsezip.ru

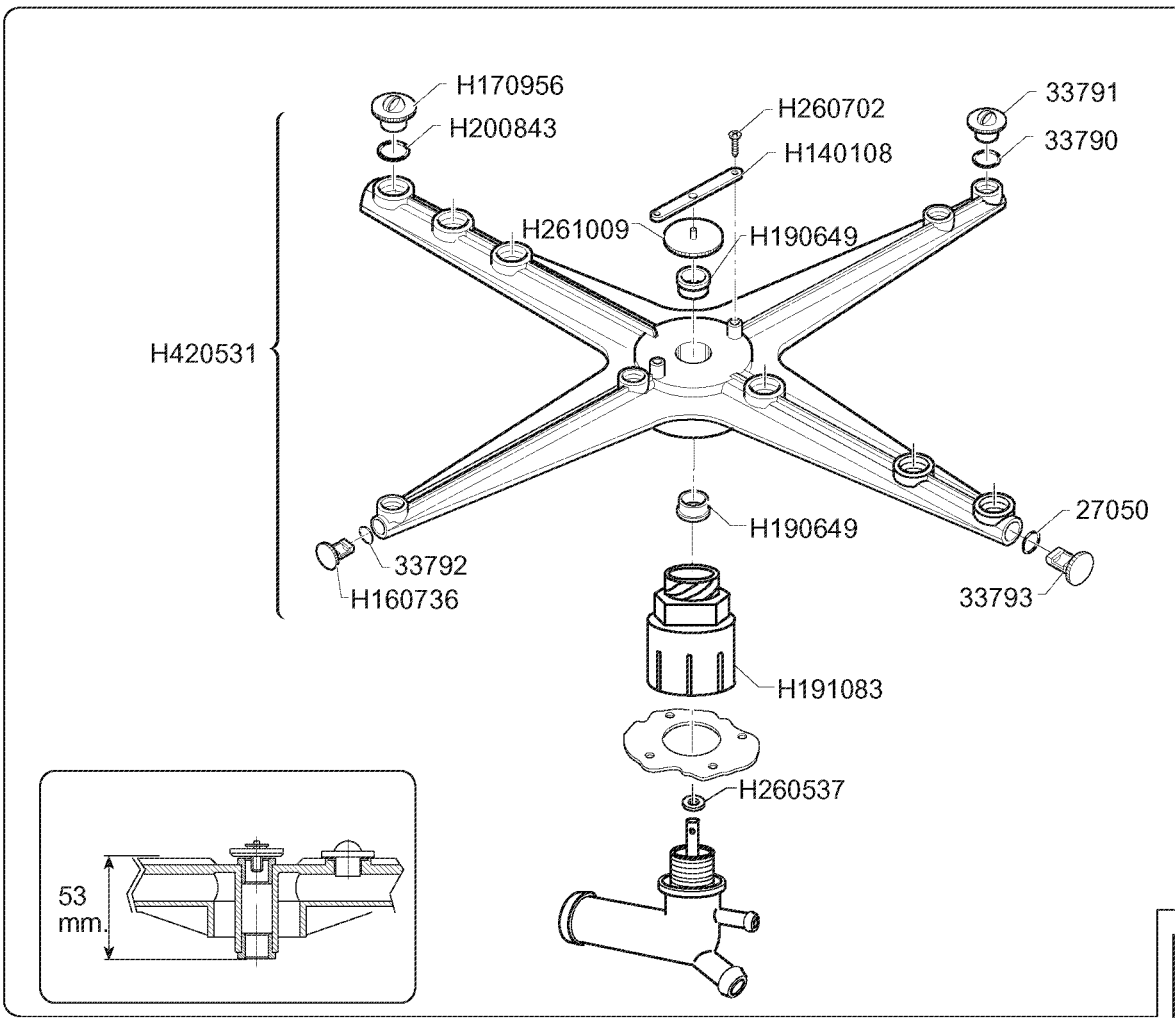
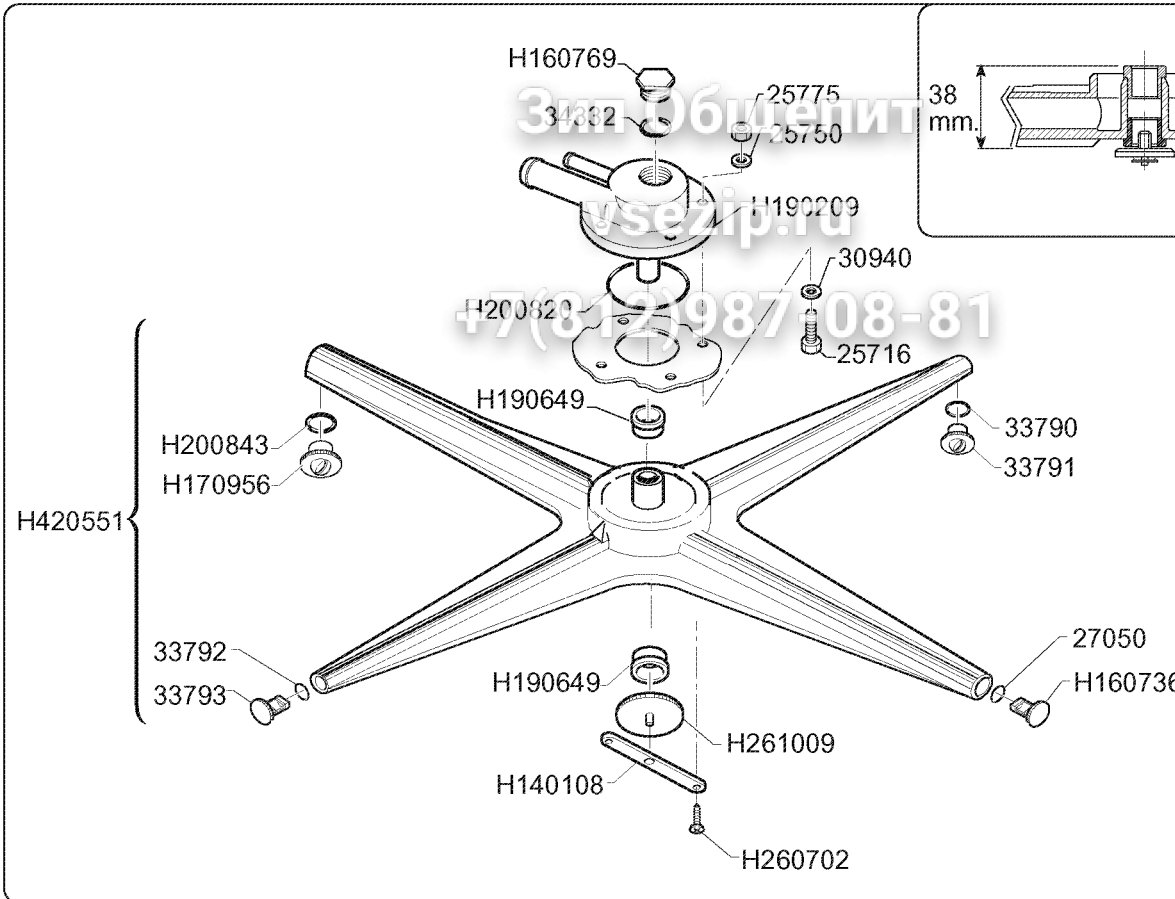
+7(810)987-08-81



Ed
Re
Da



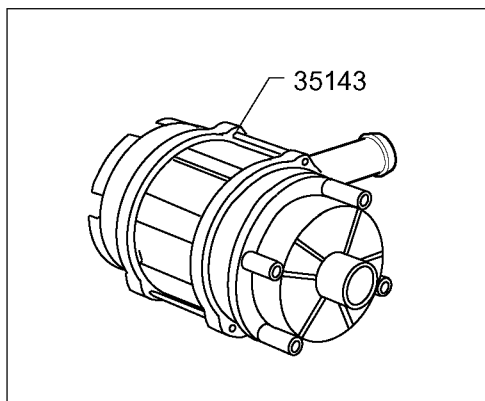
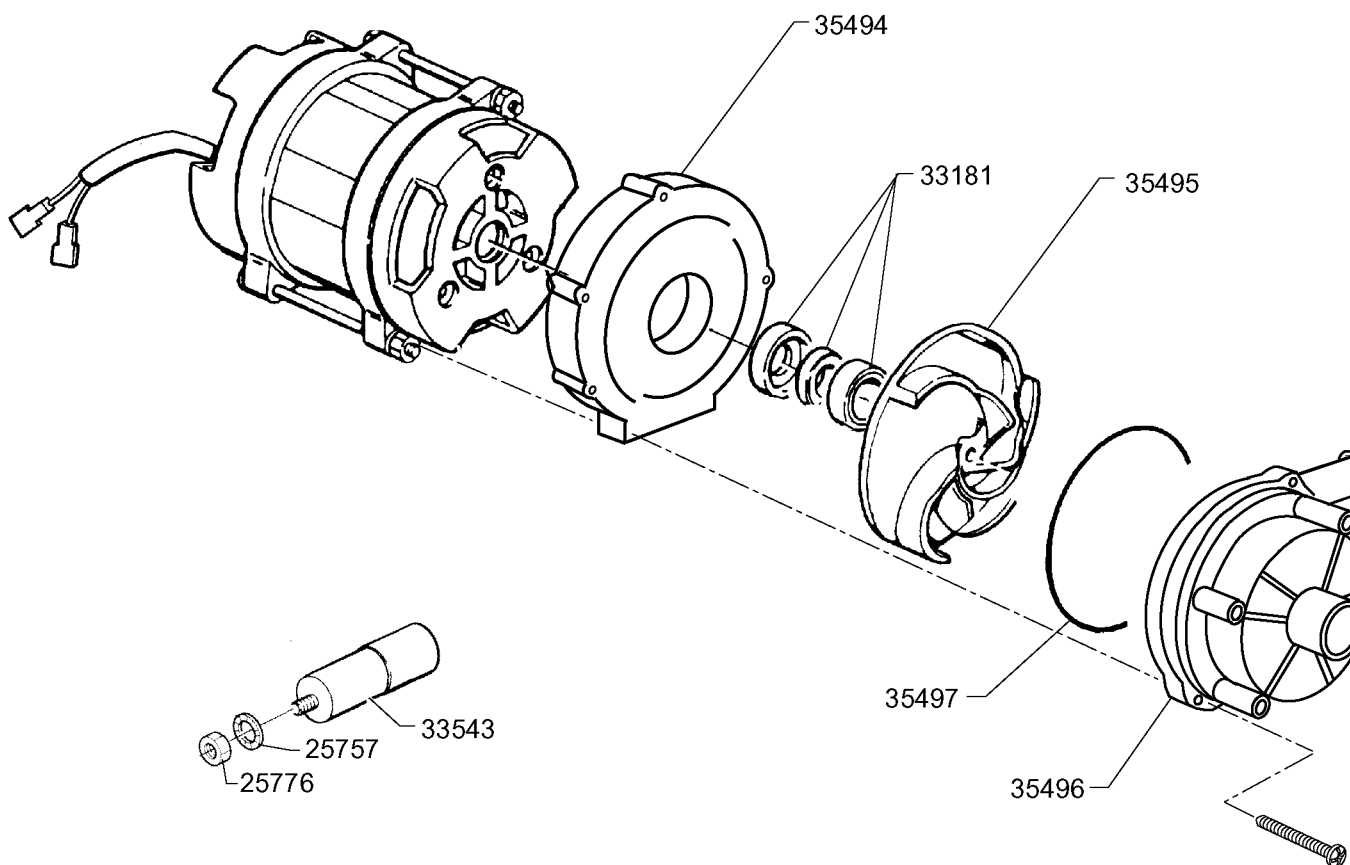
| | |
|------|----------|
| Ed. | 01.04.01 |
| Rev. | |
| Data | |



Зип Общепит

vsezip.ru

+7(812)987-08-81

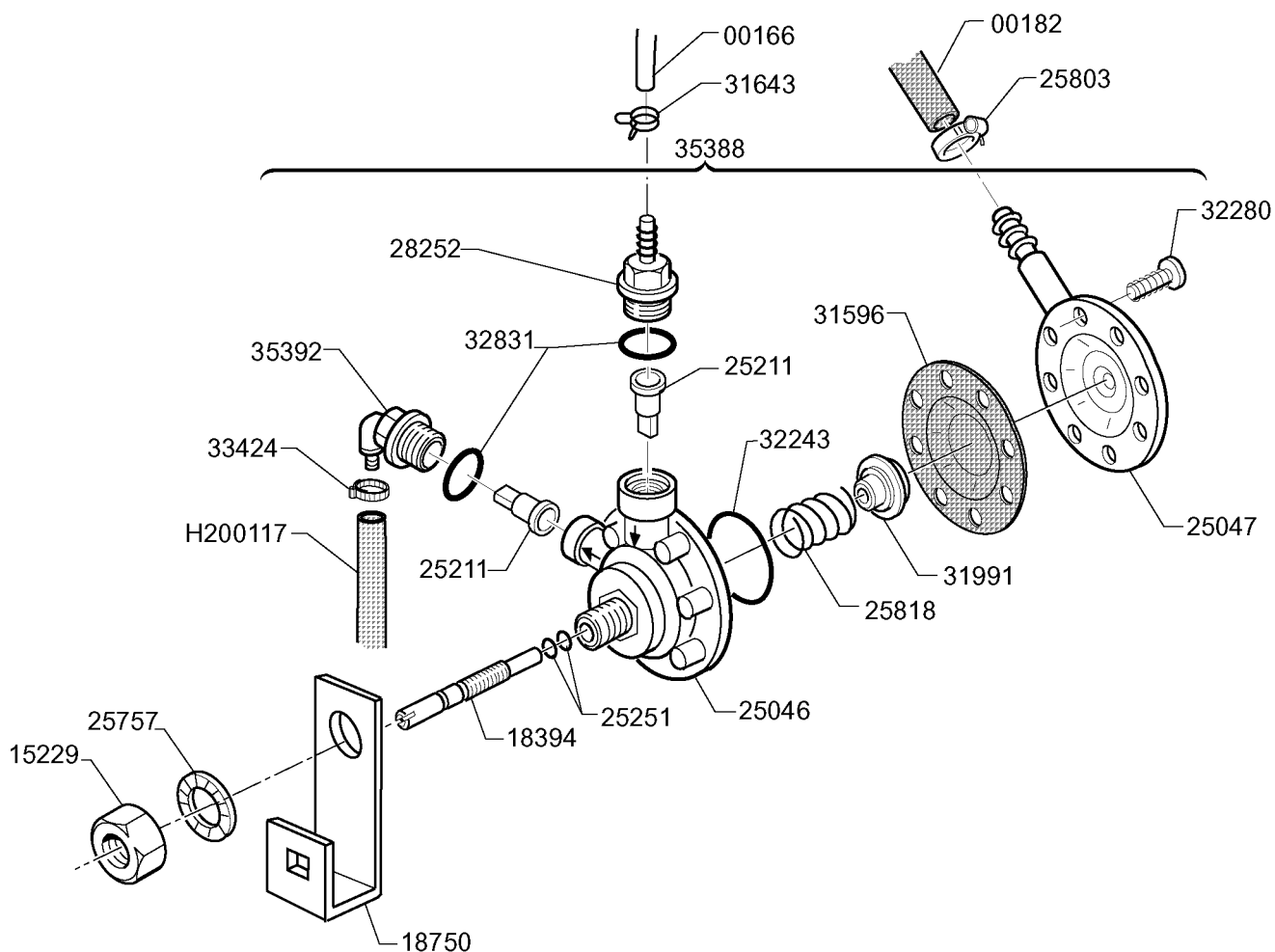


| | |
|------|----|
| Ed. | 01 |
| Rev. | |
| Data | |

Зип Общепит

vsezip.ru

+7(812)987-08-81



| | |
|------|-------|
| Ed. | 01.04 |
| Rev. | |
| Data | |

| Seite | Pos | Kredtor Artikel Nr. | IT | GB |
|-------|-----|---------------------|--------------------------------|---|
| 002 | | 34016 | TAPPO ESTREMITA'MANIGLIA DX | PLUG END HANDLE, RIGHT |
| 002 | | 34616 | PORTEL.TAMB. C48DL L452xH375 | DOOR ASSEMBLY CPL C48 DL L452xH375 |
| 002 | | 34574 | PANNELLO POSTERIORE C 48/98 | REAR PANEL C 48/98 |
| 002 | | 34570 | PANNELLO CONTRO.APS/STS/C48/98 | INNER DOOR PANEL APS/STS /C 48/98 |
| 002 | | 34565 | INVOLUCRO PORTA APS-ST5-C48/98 | DOOR CASING, APS-ST5-C48/98 |
| 002 | | 34470 | ANGOLARE GOMMA LABIRINTO VASCA | RUBBER PROTECT.CORNER, TANK LABYR. |
| 002 | | 34015 | TAPPO ESTREMITA'MANIGLIA SX | PLUG END HANDLE, LEFT |
| 002 | | 33948 | TERMOSTATO BIMETALLICO DOPPIO | BIMET. THERMOSTAT. DOUBLE CONTACT |
| 002 | | 33765 | PANNELLO SUPERIORE C 48 | UPPER PANEL C 48 |
| 002 | | 33764 | PROTEZIONE PARTI ELETTR. C 48 | PROTECTION, ELECTR.PANEL C48 |
| 002 | | 34143 | PERNO PER TIRANTE PORTELLO | PIN FOR ROD DOOR |
| 002 | | H160720 | TAPPO A SCATTO HEYCO D.8 | SNAP PLUG HEYCO D.8 |
| 002 | | 27155 | DADO IN PLASTICA 10 M | PLASTIC NUT10 M |
| 002 | | 33749 | FISSACAVO PA 277 | CABLE CLAMP PA 277 |
| 002 | | H331461 | PIASTRINA PER TIRAN. G65/BC | TIE ROD PLATE FOR G65/BC |
| 002 | | H322644 | GUIDA PORTACESTELLI PER BHC Ç | GUIDE FOR BASKETS, BHC |
| 002 | | H200494 | GUARNIZ.TERMOST.BIM.DOPPIO | GASKET FOR DOUBLE-THERMOSTAT |
| 002 | | H190619 | FERMO TIRANTE PORTA +LF/FC+ | DOOR CATCH +LF/FC+ |
| 002 | | 35313 | VASCA-BAS. C48 DL - FORO TERM. | TANK-BASE C48 DL - THERM.HOLE |
| 002 | | H160836 | ANELLO X PERNO SP08(COD 34143) | RING X PIN SP08(COD 34143) |
| 002 | | 34765 | FRONTALINO VASCA H C-CR 48 | TANK FRONT PANEL H C-CR 48 |
| 002 | | 35314 | VASCA-BAS. C 48D DL-FORO TERM. | TANK-BASE C48 D DL - THERM.HOLE |
| 002 | | 35304 | RONDELLA DENTELLATA DIAM.6 | TOOTHED WASHER DIA.6 |
| 002 | | H160838 | ANELLO PER PERNO PORTA | RING X DOOR PIN |
| 002 | | 33408 | GOMMA SPUGNA ADES. 8X4 NEOPREN | NEOPREN ADHESIVE GASKET 8 X 4 |
| 002 | | 25744 | RONDELLA PIANA DIAM.5 | SPACER, FLAT, DIAM.5 |
| 002 | | 25743 | RONDELLA PIANA DIAM. 4 | SPACER, FLAT, DIAM. 4 |
| 002 | | 25715 | VITE TE M 6 X 16 INOX | SCREW HEX.HD M 6 X 16 SS |
| 002 | | 25708 | VITE TE M 5 X 10 INOX | SCREW HEX.HD M 5 X 10 SS |
| 002 | | 25700 | VITE TC 4 X 8 CON ZIGRINATURA | SCREW CHEESE-H. 4 X 8 KNURLED |
| 002 | | 25697 | VITE AUTOF.T/TCROCE 3,9X13 ZIG | SELF-TAPPING SCREW CHEESE D747H.ROSS 3, |
| 002 | | 25745 | RONDELLA PIANA DIAM.6 | SPACER, FLAT, DIAM.6 |
| 002 | | 25693 | VITE AUTOFIL. TS 4,2X13 INOX | SELF-TAPPING SCREW BEVEL H. 4,2X13 SS |
| 002 | | 25266 | GUARNIZIONE PIATTA 18 X 10 X 2 | FLAT GASKET 18 X 10 X 2 |
| 002 | | 25209 | PIEDINI BASE ESAGONALE | FEET, HEXAG. BASE |
| 002 | | 29594 | DADO CIECO 4 MA | NUT BLIND 4 MA |
| 002 | | 18145 | FERMA CESTELLO MM.25 | RACK STOPPER MM.25 |
| 002 | | 15995 | BUSSOLA FISS. MANIGLIA STS | BUSH SPRING FIX. HANDLE STS |
| 002 | | 15568 | PERNO MOBILE X PORTELLO | MOBILE DOWEL FOR DOOR |
| 002 | | 25694 | VITE AUTOFIL. TS 4,2X19 INOX | SELF-TAPPING SCREW BEVEL H. 4,2X19 SS |
| 002 | | 30438 | MOLLA X PERNO E PORTA | SPRING FOR PIN AND DOOR |
| 002 | | 18827 | MANIGLIA X PORT. STS/APS/C 48 | HANDLE FOR DOOR STS/APS/C 48 |
| 002 | | 25752 | RONDELLA DENTEL.DIAM.4 D.E. | TOOTHED SPACER DIAM.4 D.E. |
| 002 | | 33336 | SCROCCHETTO A ROTELLA | ROLLER DOOR LATCH |
| 002 | | 33277 | VITE AUTOF. TSP 2,9 X 9,5 | SELF-TAPPING SCREW TSP 2,9 X 9,5 |
| 002 | | 32969 | MAGNETE X CONTATTO M350 AP | MAGNET FOR CONTACT M350 AP |
| 002 | | 28880 | MADREVITE | NUT SCREW |
| 002 | | 26966 | TAPPO CHIUSURA FORO 10 DET. | HOLE CLOSING PLUG |
| 002 | | 25774 | DADO 5 MA | NUTS 5 MA |
| 002 | | 25753 | RONDELLA DENTEL.DIAM.5 D.E. | TOOTHED SPACER.DIAM.5 D.E. |
| 002 | | 33179 | DADO IN GABBIA 4MA | ENCLOSED NUT 4MA |
| 002 | | 25773 | DADO 4 MA INOX 18/8 | NUTS 4 MA SS 18/8 |
| 002 | | 26691 | VITE TS M 4 X 8 | SCREW TS M 4 X 8 |
| 002 | | 25775 | DADO 6 MA | NUT 6 MA |
| 002 | | 25791 | DADO AUTOBLOCCANTE 5 MA BASSO | SELF-LOCKING NUT 5 MA LOWER SIDE |
| 002 | | 25831 | PIASTRINA X VITI AUTOF.LATI 7P | PLATE FOR SELFTHREAD. SCREW SIDES 7P |
| 003 | | 34236 | LAMPADA SIGNAL LUX BLU 230V | PILOT LIGHT, BLUE BULB 230V |
| 003 | | H160121 | TUBO GOMMA NERA "5 X 9" | HOSE, BLACK RUBBER D. 5 X 9 |
| 003 | | 33247 | SUPPORTO VETRO GRIGIO LUCIDO | SUPPORT LAMP HOLDER, BRIGHT GREY |
| 003 | | 33188 | SENSORE MAGNETICO | MAGNETIC SENSOR |
| 003 | | 33715 | TARGA COMANDI C 48 | NAMEPLATE, CONTROLS C 48 |
| 003 | | 34046 | CORDA IN NYLON X FERMOCASSETTO | NYLON ROPE, DRAWER LIMIT STOP |
| 003 | | 34198 | GEMMA D16 "BLU" | COVER, D16 "BLUE" |
| 003 | | 33349 | TARGHETTA INDICAZIONE TERRA | INDICAT.PLATE, EARTHING |
| 003 | | 34312 | RELE'T.A25 FA 16A 230V | T.RELAY A25 FA 16A 230V |
| 003 | | 34402 | TIMER P26/15 4CR 120"-230V. | TIMER P26/15 4CR 120"-230V. |
| 003 | | 34733 | FASCETTA A FILO X TUB.9,8-10,1 | WIRE PIPE CLAMP FOR 9,8-10,1 PIPE |

| Seite | Pos | Kredtor Artikel Nr. | IT | GB |
|-------|-----|---------------------|--------------------------------|---|
| 003 | | 35306 | SUPPORTO TARGA C 48 2 SERIE | NAMEPLATE HOLDER C 48 2° SERIES |
| 003 | | H150833 | PRESSAC.EGB PA268/RO | CABLE CLAMP EGB PA268/RO |
| 003 | | H460285 | CART.ATTACCO ACQUA FREDDA | COLD WATER INLET PLATE |
| 003 | | 32970 | VITE TS 3 X 20 CROCE | BEVEL, CROSS-SLOT HD. SCREW TS 3 X 20 |
| 003 | | H450137 | ATTACCO A COLLARE C/BASE 31900 | COLLAR COUPLING WITH BASE 31900 |
| 003 | | H130310 | MORSETT. 3POSTI ELETTRGIBI | TERMINAL BLOCK 3 POSIT ELECTROG. |
| 003 | | 25011 | CALOTTA X TRAPPOLA ARIA | COVER X AIR TRAP |
| 003 | | 25010 | TRAPPOLA ARIA | AIR TRAP |
| 003 | | 25239 | GUARN. OR PB 701 3112 x TRAPP. | GASKET OR PB 701 3112 X AIR TRAP |
| 003 | | 25263 | GUARN. PIATTA 38 X 25 X 2 TRAP | FLAT GASKET 38 X 25 X 2 A.TRAP |
| 003 | | 25745 | RONDELLA PIANA DIAM.6 | SPACER, FLAT, DIAM.6 |
| 003 | | 25746 | RONDELLA PIANA DIAM.6/18 | SPACER, FLAT, DIAM.6/18 |
| 003 | | 25750 | RONDELLA SPACCATA DIAM. 6 | SPACER, SPLITTED, DIAM. 6 |
| 003 | | 25757 | RONDELLA DENTEL. DIAM. 12 D.E. | TOOTHED SPACER DIAM. 12 D.E.D787 |
| 003 | | 25767 | ROND. SPAC. D.6 SOST.COD.25750 | SPACER , SPLITTED, D.6 REPLACES COD.25750 |
| 003 | | 25775 | DADO 6 MA | NUT 6 MA |
| 003 | | 25777 | DADO 3 MA | NUTS 3 MA |
| 003 | | 25782 | DADO 8 MA | NUT 8 MA |
| 003 | | 32872 | INTERRUTTORE CM UNIP. D | SWITCH SA SINGLE POLE D |
| 003 | | 32916 | TAPPO D 16 | PLUG D 16 |
| 003 | | 28870 | LAMPADA SIGNAL-LUX FM6,3 230V. | PILOT LIGHT BULB -LUX FM6,3 230V. |
| 003 | | 32890 | TASTO GRIGIO LUCIDO | BRIGHT GREY PUSH-BUTTON, |
| 003 | | 32892 | LAMPADA NEON"VERDE" FL-T FM6,3 | NEON LIGHT BULB "GREEN" FL-T FM6,3 |
| 003 | | 32869 | GEMMA D16"ARANCIO" | CAP, Ø16"ORANGE" |
| 003 | | 32868 | GEMMA D16"VERDE" | CAP, Ø16"GREEN" |
| 003 | | 31828 | RONDELLA DENTEL.E. DIAM.3 | DENTED ROUND SPACER, EX Ø 3 |
| 003 | | 31324 | FILTRO ANTIDISTURBO TIPO 5001 | NOISE FILTER, TYPE 5001 |
| 003 | | 31171 | PRESSOSTATO TAR. 28/12+-3 | PRESSURE SWITCH, RATED 28/12+-3 |
| 003 | | 29529 | PULSANTE UNIPOLARE NA | UNIPOLAR PUSHBUTTON NA |
| 003 | | 32891 | SUPPORTO LAMPADA | LIGHT BULB HOLDER |
| 004 | | 34236 | LAMPADA SIGNAL LUX BLU 230V | PILOT LIGHT, BLUE BULB 230V |
| 004 | | 34198 | GEMMA D16 "BLU" | COVER, D16 "BLUE" |
| 004 | | 34046 | CORDA IN NYLON X FERMOCASSETTO | NYLON ROPE, DRAWER LIMIT STOP |
| 004 | | 33715 | TARGA COMANDI C 48 | NAMEPLATE, CONTROLS C 48 |
| 004 | | 33596 | INTERRUTTORE BIP. SAA1C14110 | SWITCH, DOUB.POLE SAA1C14110 |
| 004 | | 33349 | TARGHETTA INDICAZIONE TERRA | INDICAT.PLATE, EARTHING |
| 004 | | 34312 | RELE'T.A2S FA 16A 230V | T.RELAY A2S FA 16A 230V |
| 004 | | 33188 | SENSORE MAGNETICO | MAGNETIC SENSOR |
| 004 | | H160121 | TUBO GOMMA NERA "5 X 9" | HOSE, BLACK RUBBER D. 5 X 9 |
| 004 | | 33247 | SUPPORTO VETRO GRIGIO LUCIDO | SUPPORT LAMP HOLDER, BRIGHT GREY |
| 004 | | 34402 | TIMER P26/15 4CR 120"-230V. | TIMER P26/15 4CR 120"-230V. |
| 004 | | 34733 | FASCETTA A FILO X TUB.9,8-10,1 | WIRE PIPE CLAMP FOR 9,8-10,1 PIPE |
| 004 | | 34815 | VITE AUT. T/TCROCE 3,9 X 13 | CROSS-SL.HD SELF-TAP.SCREW3,9 X 13 |
| 004 | | 35302 | SUPPORTO IMP.ELET. C/STS 43/48 | ELECTRIC PLANT SUPPORT C/STS 43/48 |
| 004 | | 35306 | SUPPORTO TARGA C 48 2 SERIE | NAMEPLATE HOLDER C 48 2° SERIES |
| 004 | | H150833 | PRESSAC.EGB PA268/RO | CABLE CLAMP EGB PA268/RO |
| 004 | | H450137 | ATTACCO A COLLARE C/BASE 31900 | COLLAR COUPLING WITH BASE 31900 |
| 004 | | H460285 | CART.ATTACCO ACQUA FREDDA | COLD WATER INLET PLATE |
| 004 | | 25010 | TRAPPOLA ARIA | AIR TRAP |
| 004 | | 32970 | VITE TS 3 X 20 CROCE | BEVEL, CROSS-SLOT HD. SCREW TS 3 X 20 |
| 004 | | 29529 | PULSANTE UNIPOLARE NA | UNIPOLAR PUSHBUTTON NA |
| 004 | | H130310 | MORSETT. 3POSTI ELETTRGIBI | TERMINAL BLOCK 3 POSIT ELECTROG. |
| 004 | | 25757 | RONDELLA DENTEL. DIAM. 12 D.E. | TOOTHED SPACER DIAM. 12 D.E.D787 |
| 004 | | 25011 | CALOTTA X TRAPPOLA ARIA | COVER X AIR TRAP |
| 004 | | 25239 | GUARN. OR PB 701 3112 x TRAPP. | GASKET OR PB 701 3112 x AIR TRAP |
| 004 | | 25263 | GUARN. PIATTA 38 X 25 X 2 TRAP | FLAT GASKET 38 X 25 X 2 A.TRAP |
| 004 | | 25745 | RONDELLA PIANA DIAM.6 | SPACER, FLAT, DIAM.6 |
| 004 | | 31324 | FILTRO ANTIDISTURBO TIPO 5001 | NOISE FILTER, TYPE 5001 |
| 004 | | 25750 | RONDELLA SPACCATA DIAM. 6 | SPACER, SPLITTED, DIAM. 6 |
| 004 | | 32892 | LAMPADA NEON"VERDE" FL-T FM6,3 | NEON LIGHT BULB "GREEN" FL-T FM6,3 |
| 004 | | 25767 | ROND. SPAC. D.6 SOST.COD.25750 | SPACER , SPLITTED, D.6 REPLACES COD.25750 |
| 004 | | 25775 | DADO 6 MA | NUT 6 MA |
| 004 | | 25777 | DADO 3 MA | NUTS 3 MA |
| 004 | | 32890 | TASTO GRIGIO LUCIDO | BRIGHT GREY PUSH-BUTTON, |
| 004 | | 26880 | TIMER RIGENERA 18'X S/E NKD | TIMER REGENERATION 20" X S/E NKD |
| 004 | | 28870 | LAMPADA SIGNAL-LUX FM6,3 230V. | PILOT LIGHT BULB -LUX FM6,3 230V. |
| 004 | | 31171 | PRESSOSTATO TAR. 28/12+-3 | PRESSURE SWITCH, RATED 28/12+-3 |

| Seite | Pos | Kredtor Artikel Nr. | IT | GB |
|-------|-----|---------------------|-------------------------------------|---|
| 004 | | 32869 | GEMMA D16"ARANCIO" | CAP, Ø16"ORANGE" |
| 004 | | 25782 | DADO 8 MA | NUT 8 MA |
| 004 | | 25746 | RONDELLA PIANA DIAM.6/18 | SPACER, FLAT, DIAM.6/18 |
| 004 | | 32891 | SUPPORTO LAMPADA | LIGHT BULB HOLDER |
| 005 | | H200340 | MANICOTTO B25-7-12-CONT.SAL. | SALT CONTAINER HOSE B25-7-12 |
| 005 | | 34534 | TERMOSTATO ASS.COTHERM 87-109° | THERMOSTAT ASS.COTHERM 87-109° |
| 005 | | 33424 | FASCETTA FE ZN 11-17 H=9 | FE-ZN CLAMP 11-17 H=9 |
| 005 | | 33590 | ADDOLCITORE 3 COLONNE | WATER SOFTENER 3 COLUMNS |
| 005 | | 33889 | RIDUTTORE ELETTROVAL. RIGENERA | REDUCER, SOLENOID V. REGENER |
| 005 | | 33276 | CONNETTORE A T-D11,5-COM180413 | T-SHAPED CONNECTOR Ø11,5-PART180413 |
| 005 | | 33973 | PORTAGOMMA COM 180411 | HOSE FITTING COM 180411 |
| 005 | | 33974 | DADO X RACCORDO COM 180130 | NUT FOR FITTING COM 180130 |
| 005 | | 33975 | TUBO POLLET.6.5X1.1 COM 160117 | PIPE 6.5X1.1 COM 160117 |
| 005 | | 34678 | SQUADRETTA TERMOSTATO COTHERM | BRACKET, THERMOSTAT COTHERM |
| 005 | | H201038 | TUBO COLL.VALV.ANTIV. ADD. H/C | CONNEC.TUBE ANTI VAC. VAL. ADD. H/C |
| 005 | | 35382 | CAVALLOTTO FISS.ADD.3 COLONNE | FIX.JUMPER, 3-COLUMN SOFTENER |
| 005 | | 35388 | DOSATORE BRILL.GIALL. C/STS | RINSE AID DISP."YELLOW" C/STS |
| 005 | | 35426 | BOLLITORE -C/CR/STSD/43/48 | BOILER -C/CR/STSD/43/48 |
| 005 | | H200117 | TUBO GOMMA 8X15 INDUSTRIA 10 | RUBBER HOSE 8X16, INDUSTR,10 |
| 005 | | H200820 | GUARN.OR 5,33X46,99X57,6 | OR GASKET 5,33X46,99X57,6 |
| 005 | | 28880 | MADREVITE | NUT SCREW |
| 005 | | 25216 | MANICOTTO SCARICO 50-52-T4(T5) | DRAIN SLEEVE 50-52-T4(T5) |
| 005 | | 35484 | RES.FLAN.3200W MONO s/za portabulbo | FL.RESIST.3200 MONO w/out CAPILLARY |
| 005 | | 25034 | TAPPO CONT.SALE -> 25051 | PLUG, SALT CONTAIN. -> 25051 |
| 005 | | 25265 | GUARNIZIONE PIATTA X SERBATOIO SALE | FLAT GASKET X RESERV. SALT |
| 005 | | 26863 | VITE TE 6 X 8 INOX | HEX HD SCREW 6 X 8 STAINLESS S. |
| 005 | | 17901 | SQUADRETTA ELETTROVALVOLA | SOLENOID VALVE HOLDER |
| 005 | | 25033 | GHIERA SALE -> VEDERE IL 25051 | SALT NUT -> SEE 25051 |
| 005 | | 00182 | TUBO GOMMA 11X19 CASER/15"BLU" | HOSE 11X19 CASER/15"BLUE" |
| 005 | | 25051 | CONTENITORE SALE COMPLETO | SALT CONTAINER COMPLETE |
| 005 | | 25235 | TUBO DI CARICO 3/4" 60 ATE | INLET HOSE 3/4" 60 ATE |
| 005 | | 25274 | GUARNIZIONE PIATTA 12 X 6 X 2 | FLAT GASKET 12 X 6 X 2 |
| 005 | | 25831 | PIASTRINA X VITI AUTOF.LATI 7P | PLATE FOR SELFTHREAD. SCREW SIDES 7P |
| 005 | | 20151 | CONTENITORE SALE 1Kg. | SALT CONTAINER FOR SPARE PART 1Kg. |
| 005 | | 26631 | ELETTROVALVOLA DOPPIA 3/4" | SOLENOID V., DOUBLE 3/4" |
| 005 | | 25697 | VITE AUTOF.T/TCROCE 3,9X13 ZIG | SELF-TAPPING SCREW CHEESE D747H.ROSS 3, |
| 005 | | 25803 | FASCETTA STRINGITUBO 13-20 ABA | HOSE CLIP 13-20 ABA |
| 005 | | 25750 | RONDELLA SPACCATA DIAM. 6 | SPACER, SPLITTED, DIAM. 6 |
| 005 | | 25746 | RONDELLA PIANA DIAM.6/18 | SPACER, FLAT, DIAM.6/18 |
| 005 | | 25715 | VITE TE M 6 X 16 INOX | SCREW HEX.HD M 6 X 16 SS |
| 005 | | 25700 | VITE TC 4 X 8 CON ZIGRINATURA | SCREW CHEESE-H. 4 X 8 KNURLED |
| 006 | | 34678 | SQUADRETTA TERMOSTATO COTHERM | BRACKET, THERMOSTAT COTHERM |
| 006 | | 28880 | MADREVITE | NUT SCREW |
| 006 | | 33276 | CONNETTORE A T-D11,5-COM180413 | T-SHAPED CONNECTOR Ø11,5-PART180413 |
| 006 | | 33424 | FASCETTA FE ZN 11-17 H=9 | FE-ZN CLAMP 11-17 H=9 |
| 006 | | 25274 | GUARNIZIONE PIATTA 12 X 6 X 2 | FLAT GASKET 12 X 6 X 2 |
| 006 | | 33889 | RIDUTTORE ELETTROVAL. RIGENERA | REDUCER, SOLENOID V. REGENER |
| 006 | | 34534 | TERMOSTATO ASS.COTHERM 87-109° | THERMOSTAT ASS.COTHERM 87-109° |
| 006 | | 26863 | VITE TE 6 X 8 INOX | HEX HD SCREW 6 X 8 STAINLESS S. |
| 006 | | 35388 | DOSATORE BRILL.GIALL. C/STS | RINSE AID DISP."YELLOW" C/STS |
| 006 | | 35426 | BOLLITORE -C/CR/STSD/43/48 | BOILER -C/CR/STSD/43/48 |
| 006 | | 35484 | RES.FLAN.3200W MONO s/za portabulbo | FL.RESIST.3200 MONO w/out CAPILLARY |
| 006 | | H200117 | TUBO GOMMA 8X15 INDUSTRIA 10 | RUBBER HOSE 8X16, INDUSTR,10 |
| 006 | | H200340 | MANICOTTO B25-7-12-CONT.SAL. | SALT CONTAINER HOSE B25-7-12 |
| 006 | | H200820 | GUARN.OR 5,33X46,99X57,6 | OR GASKET 5,33X46,99X57,6 |
| 006 | | H331839 | CAVALLOTTO FISS.ADD.4 COLONNE | JUMPER FIX. 4-COLUMN SOFTENER |
| 006 | | 26631 | ELETTROVALVOLA DOPPIA 3/4" | SOLENOID V., DOUBLE 3/4" |
| 006 | | H640209 | ADDOLCITORE 4 COLONNE | SOFTENER, 4-COLUMN |
| 006 | | 25033 | GHIERA SALE -> VEDERE IL 25051 | SALT NUT -> SEE 25051 |
| 006 | | 25831 | PIASTRINA X VITI AUTOF.LATI 7P | PLATE FOR SELFTHREAD. SCREW SIDES 7P |
| 006 | | 00182 | TUBO GOMMA 11X19 CASER/15"BLU" | HOSE 11X19 CASER/15"BLUE" |
| 006 | | 20151 | CONTENITORE SALE 1Kg. | SALT CONTAINER FOR SPARE PART 1Kg. |
| 006 | | 25034 | TAPPO CONT.SALE -> 25051 | PLUG, SALT CONTAIN. -> 25051 |
| 006 | | 25051 | CONTENITORE SALE COMPLETO | SALT CONTAINER COMPLETE |
| 006 | | 25235 | TUBO DI CARICO 3/4" 60 ATE | INLET HOSE 3/4" 60 ATE |
| 006 | | 25246 | GUARNIZIONE OR X CONTENIT.SALE | GASKET OR X SALT CONTAIN. |
| 006 | | 25803 | FASCETTA STRINGITUBO 13-20 ABA | HOSE CLIP 13-20 ABA |

| Seite | Pos | Kredtor Artikel Nr. | IT | GB |
|-------|-----|---------------------|-------------------------------------|---|
| 006 | | 25715 | VITE TE M 6 X 16 INOX | SCREW HEX.HD M 6 X 16 SS |
| 006 | | 25746 | RONDELLA PIANA DIAM.6/18 | SPACER, FLAT, DIAM.6/18 |
| 006 | | 25750 | RONDELLA SPACCATA DIAM. 6 | SPACER, SPLITTED, DIAM. 6 |
| 006 | | 25265 | GUARNIZIONE PIATTA X SERBATOIO SALE | FLAT GASKET X RESERV. SALT |
| 006 | | 17901 | SQUADRETTA ELETTROVALVOLA | SOLENOID VALVE HOLDER |
| 007 | | 33975 | TUBO POLLET.6.5X1.1 COM 160117 | PIPE 6.5X1.1 COM 160117 |
| 007 | | 33974 | DADO X RACCORDO COM 180130 | NUT FOR FITTING COM 180130 |
| 007 | | 33973 | PORTAGOMMA COM 180411 | HOSE FITTING COM 180411 |
| 007 | | 33889 | RIDUTTORE ELETTROVAL. RIGENERA | REDUCER, SOLENOID V. REGENER |
| 007 | | 33590 | ADDOLCITORE 3 COLONNE | WATER SOFTENER 3 COLUMNS |
| 007 | | 33506 | VALVOLA ANTIVUOTO "B-F-C" | ANTI-VACUUM VALVE "B-F-C" |
| 007 | | 33502 | TEE PARASPRUZZI VALVOLA ANTIV. | T SPLASHPROOF FOR ANTIVAC.VLV |
| 007 | | 34534 | TERMOSTATO ASS.COTHERM 87-109° | THERMOSTAT ASS.COTHERM 87-109° |
| 007 | | H201038 | TUBO COLL.VALV.ANTIV. ADD. H/C | CONNEC.TUBE ANTI VAC. VAL. ADD. H/C |
| 007 | | 33505 | GUARNIZ.30X21X2 KLING.(H460502 | GASKET 30X21X2 KLINGER SIL |
| 007 | | 34678 | SQUADRETTA TERMOSTATO COTHERM | BRACKET, THERMOSTAT COTHERM |
| 007 | | 35382 | CAVALLOTTO FISS.ADD.3 COLONNE | FIX.JUMPER, 3-COLUMN SOFTENER |
| 007 | | 35388 | DOSATORE BRILL.GIALL. C/STS | RINSE AID DISP."YELLOW" C/STS |
| 007 | | 35426 | BOLLITORE -C/CR/STSD/43/48 | BOILER -C/CR/STSD/43/48 |
| 007 | | 35484 | RES.FLAN.3200W MONO s/za portabulbo | FL.RESIST.3200 MONO w/out CAPILLARY |
| 007 | | H200117 | TUBO GOMMA 8X15 INDUSTRIA 10 | RUBBER HOSE 8X16, INDUSTR,10 |
| 007 | | 33276 | CONNETTORE A T-D11,5-COM180413 | T-SHAPED CONNECTOR 11,5-PART180413 |
| 007 | | H200820 | GUARN.OR 5,33X46,99X57,6 | OR GASKET 5,33X46,99X57,6 |
| 007 | | 28880 | MADREVITE | NUT SCREW |
| 007 | | H200340 | MANICOTTO B25-7-12-CONT.SAL. | SALT CONTAINER HOSE B25-7-12 |
| 007 | | 25033 | GHIERA SALE -> VEDERE IL 25051 | SALT NUT -> SEE 25051 |
| 007 | | 00182 | TUBO GOMMA 11X19 CASER/15"BLU" | HOSE 11X19 CASER/15"BLUE" |
| 007 | | 33424 | FASCETTA FE ZN 11-17 H=9 | FE-ZN CLAMP 11-17 H=9 |
| 007 | | 20151 | CONTENITORE SALE 1Kg. | SALT CONTAINER FOR SPARE PART 1Kg. |
| 007 | | 25034 | TAPPO CONT.SALE -> 25051 | PLUG, SALT CONTAIN. -> 25051 |
| 007 | | 25051 | CONTENITORE SALE COMPLETO | SALT CONTAINER COMPLETE |
| 007 | | 25235 | TUBO DI CARICO 3/4" 60 ATE | INLET HOSE 3/4" 60 ATE |
| 007 | | 25246 | GUARNIZIONE OR X CONTENIT.SALE | GASKET OR X SALT CONTAIN. |
| 007 | | 25265 | GUARNIZIONE PIATTA X SERBATOIO SALE | FLAT GASKET X RESERV. SALT |
| 007 | | 25274 | GUARNIZIONE PIATTA 12 X 6 X 2 | FLAT GASKET 12 X 6 X 2 |
| 007 | | 26631 | ELETTROVALVOLA DOPPIA 3/4" | SOLENOID V., DOUBLE 3/4" |
| 007 | | 17901 | SQUADRETTA ELETTROVALVOLA | SOLENOID VALVE HOLDER |
| 007 | | 25697 | VITE AUTOF.T/TCROCE 3,9X13 ZIG | SELF-TAPPING SCREW CHEESE D747H.ROSS 3, |
| 007 | | 26863 | VITE TE 6 X 8 INOX | HEX HD SCREW 6 X 8 STAINLESS S. |
| 007 | | 25831 | PIASTRINA X VITI AUTOF.LATI 7P | PLATE FOR SELFTHREAD. SCREW SIDES 7P |
| 007 | | 25803 | FASCETTA STRINGITUBO 13-20 ABA | HOSE CLIP 13-20 ABA |
| 007 | | 25750 | RONDELLA SPACCATA DIAM. 6 | SPACER, SPLITTED, DIAM. 6 |
| 007 | | 25746 | RONDELLA PIANA DIAM.6/18 | SPACER, FLAT, DIAM.6/18 |
| 007 | | 25715 | VITE TE M 6 X 16 INOX | SCREW HEX.HD M 6 X 16 SS |
| 007 | | 25700 | VITE TC 4 X 8 CON ZIGRINATURA | SCREW CHEESE-H. 4 X 8 KNURLED |
| 008 | | 28880 | MADREVITE | NUT SCREW |
| 008 | | H331839 | CAVALLOTTO FISS.ADD.4 COLONNE | JUMPER FIX. 4-COLUMN SOFTENER |
| 008 | | 34678 | SQUADRETTA TERMOSTATO COTHERM | BRACKET, THERMOSTAT COTHERM |
| 008 | | 33502 | TEE PARASPRUZZI VALVOLA ANTIV. | T SPLASHPROOF FOR ANTIVAC.VLV |
| 008 | | 33506 | VALVOLA ANTIVUOTO "B-F-C" | ANTI-VACUUM VALVE "B-F-C" |
| 008 | | 33889 | RIDUTTORE ELETTROVAL. RIGENERA | REDUCER, SOLENOID V. REGENER |
| 008 | | 34534 | TERMOSTATO ASS.COTHERM 87-109° | THERMOSTAT ASS.COTHERM 87-109° |
| 008 | | 33276 | CONNETTORE A T-D11,5-COM180413 | T-SHAPED CONNECTOR 11,5-PART180413 |
| 008 | | 35388 | DOSATORE BRILL.GIALL. C/STS | RINSE AID DISP."YELLOW" C/STS |
| 008 | | 35426 | BOLLITORE -C/CR/STSD/43/48 | BOILER -C/CR/STSD/43/48 |
| 008 | | 35484 | RES.FLAN.3200W MONO s/za portabulbo | FL.RESIST.3200 MONO w/out CAPILLARY |
| 008 | | H200117 | TUBO GOMMA 8X15 INDUSTRIA 10 | RUBBER HOSE 8X16, INDUSTR,10 |
| 008 | | H200820 | GUARN.OR 5,33X46,99X57,6 | OR GASKET 5,33X46,99X57,6 |
| 008 | | H640209 | ADDOLCITORE 4 COLONNE | SOFTENER, 4-COLUMN |
| 008 | | 26863 | VITE TE 6 X 8 INOX | HEX HD SCREW 6 X 8 STAINLESS S. |
| 008 | | 33424 | FASCETTA FE ZN 11-17 H=9 | FE-ZN CLAMP 11-17 H=9 |
| 008 | | H200340 | MANICOTTO B25-7-12-CONT.SAL. | SALT CONTAINER HOSE B25-7-12 |
| 008 | | 25051 | CONTENITORE SALE COMPLETO | SALT CONTAINER COMPLETE |
| 008 | | 26631 | ELETTROVALVOLA DOPPIA 3/4" | SOLENOID V., DOUBLE 3/4" |
| 008 | | 33505 | GUARNIZ.30X21X2 KLING.(H460502 | GASKET 30X21X2 KLINGER SIL |
| 008 | | 17901 | SQUADRETTA ELETTROVALVOLA | SOLENOID VALVE HOLDER |
| 008 | | 20151 | CONTENITORE SALE 1Kg. | SALT CONTAINER FOR SPARE PART 1Kg. |

| Seite | Pos | Kreditor Artikel Nr. | IT | GB |
|-------|-----|----------------------|-------------------------------------|---|
| 008 | | 25246 | GUARNIZIONE OR X CONTENIT.SALE | GASKET OR X SALT CONTAIN. |
| 008 | | 25265 | GUARNIZIONE PIATTA X SERBATOIO SALE | FLAT GASKET X RESERV. SALT |
| 008 | | 25274 | GUARNIZIONE PIATTA 12 X 6 X 2 | FLAT GASKET 12 X 6 X 2 |
| 008 | | 25803 | FASCETTA STRINGITUBO 13-20 ABA | HOSE CLIP 13-20 ABA |
| 008 | | 25033 | GHIERA SALE -> VEDERE IL 25051 | SALT NUT -> SEE 25051 |
| 008 | | 25831 | PIASTRINA X VITI AUTOF.LATI 7P | PLATE FOR SELFTHREAD. SCREW SIDES 7P |
| 008 | | 25697 | VITE AUTOF.T/TCROCE 3,9X13 ZIG | SELF-TAPPING SCREW CHEESE D747H.ROSS 3, |
| 008 | | 25750 | RONDELLA SPACCATA DIAM. 6 | SPACER, SPLITTED, DIAM. 6 |
| 008 | | 00182 | TUBO GOMMA 11X19 CASER/15"BLU | HOSE 11X19 CASER/15"BLUE" |
| 008 | | 25746 | RONDELLA PIANA DIAM.6/18 | SPACER, FLAT, DIAM.6/18 |
| 008 | | 25715 | VITE TE M 6 X 16 INOX | SCREW HEX.HD M 6 X 16 SS |
| 008 | | 25700 | VITE TC 4 X 8 CON ZIGRINATURA | SCREW CHEESE-H. 4 X 8 KNURLED |
| 009 | | H200820 | GUARN.OR 5,33X46,99X57,6 | OR GASKET 5,33X46,99X57,6 |
| 009 | | 33543 | CONDENSATORE 5 UF-450 V | CAPACITOR 5 UF-450 V |
| 009 | | 34332 | GUARNIZIONE OR 128 TAPPO SUPP. | GASKET OR 128 SUPP.PLUG |
| 009 | | 34556 | FILTRO ASP.POMPA STS-43-48-53 | SUCTION FILTER PUMP STS-43-48-53 |
| 009 | | 34658 | FILTRO VASCA POLIP. 43-53/98 | FILTER, TANK POLYP. 43-53/98 |
| 009 | | 34733 | FASCETTA A FILO X TUB.9,8-10,1 | WIRE PIPE CLAMP FOR 9,8-10,1 PIPE |
| 009 | | 34815 | VITE AUT. T/TCROCE 3,9 X 13 | CROSS-SL.HD SELF-TAP.SCREW3,9 X 13 |
| 009 | | 35037 | TROPPOPIENO 43/48 COM | OVERFLOW TUBE 43/48 COM |
| 009 | | 35143 | ELETTROPOMPA HP.0,3 ZF140 50Hz | WASH PUMP HP .0,3 ZF140 50 Hz |
| 009 | | 35230 | RESIS. VASCA 2000W-230V SAGOM. | HEAT.ELEM. TANK 2000W-230V S-SHAPE |
| 009 | | 34106 | TUBO DI SCARICO DR. D.20X1500 | DRAIN TUBE DR. D.20X1500 |
| 009 | | 35454 | MANICOTTO ASPIRAZ. C 43/C 48 | SUCTION SLEEVE H C 43/C48 |
| 009 | | 35472 | SQUADRETTA POMPA STS48 rib. | BRACKET, PUMP STS 48 SUNK |
| 009 | | 35498 | TUBO MANDATA INF. STS43-48 | DELIVERY PIPE.H STS43-48 |
| 009 | | 36087 | CAVALLOTTO FIS.RESIST.VASCA | SUPPORT X HEATING ELEM. TANK |
| 009 | | H160121 | TUBO GOMMA NERA "5 X 9" | HOSE, BLACK RUBBER D. 5 X 9 |
| 009 | | H160769 | TAPPO 1/2" X SUPPORTO MULIN. | PLUG 1/2" FOR REV.WASHARM SUPPORT |
| 009 | | H190209 | SUPPORTO MULINELLO SUPERIORE | SUPPORT, UPPER REVOLV.ARM |
| 009 | | 31948 | GUARNIZIONE OR | GASKET OR |
| 009 | | H191083 | COLONNINA INFERIORE STS48/BHC | LOWER COLUMN STS48/BHC |
| 009 | | 30425 | PILETTA ASPIRAZIONE | SUCTION PIPE UNION |
| 009 | | H201032 | TUBO MANDATA LAV.SUP.STS48/BHC | UPPER WASH. OUTLET TUBE STS48/BHC |
| 009 | | H260537 | RONDEL.INOX D.13X20X0,8-6592 | S.S. FLAT WASHER D13X20X0, 8-6592 |
| 009 | | H190223 | SUPPORTO MULINELLO INFERIORE | LOWER REV.WASHARM HOLDER |
| 009 | | 25715 | VITE TE M 6 X 16 INOX | SCREW HEX.HD M 6 X 16 SS |
| 009 | | 00182 | TUBO GOMMA 11X19 CASER/15"BLU" | HOSE 11X19 CASER/15"BLUE" |
| 009 | | 25006 | GHIERA PILETTA ASP. P. | NUT FO DRAIN SUCT. P. |
| 009 | | 25010 | TRAPPOLA ARIA | AIR TRAP |
| 009 | | 25011 | CALOTTA X TRAPPOLA ARIA | COVER X AIR TRAP |
| 009 | | 30479 | GUARNIZIONE OR 4081 | GASKET OR 4081 |
| 009 | | 25263 | GUARN. PIATTA 38 X 25 X 2 TRAP | FLAT GASKET 38 X 25 X 2 A.TRAP |
| 009 | | 31637 | GHIERA CON GANCIO S/ZA CROCE | CROSSLESS HOOK SLEEVE |
| 009 | | 25716 | VITE TE M 6 X 20 INOX | SCREW HEX.HD M 6 X 20 SS |
| 009 | | 25746 | RONDELLA PIANA DIAM.6/18 | SPACER, FLAT, DIAM.6/18 |
| 009 | | 25750 | RONDELLA SPACCATA DIAM. 6 | SPACER, SPLITTED, DIAM. 6 |
| 009 | | 25757 | RONDELLA DENTEL. DIAM. 12 D.E. | TOOTHED SPACER DIAM. 12 D.E.D787 |
| 009 | | 25775 | DADO 6 MA | NUT 6 MA |
| 009 | | 30424 | COPERCHIO X TROPPOPIENO | COVER FOR OVERFLOW TUBE |
| 009 | | 25239 | GUARN. OR PB 701 3112 x TRAPP. | GASKET OR PB 701 3112 x AIR TRAP |
| 009 | | 25782 | DADO 8 MA | NUT 8 MA |
| 009 | | 30426 | MOLLA X TROPPOPIENO | SPRING FOR OVERFLOW TUBE |
| 009 | | 31171 | PRESSOSTATO TAR. 28/12+-3 | PRESSURE SWITCH, RATED 28/12+-3 |
| 009 | | 30421 | RACCORDO DI SCARICO LUNGO | DRAIN FITTING, LONG |
| 009 | | 28226 | GUARNIZ.OR 3181 X PIPA SCARICO | GASKET OR 3181 FOR DRAIN LUG |
| 009 | | 25809 | FASCETTA STRINGITUBO 40-64CLAM | HOSE CLIP 40-64CLAM |
| 009 | | 25808 | FASCETTE STRINGITUBO 27-51CLAM | HOSE CLIP 27-51CLAM |
| 009 | | 25807 | FASCETTA STRINGITUBO 26-38 ABA | HOSE CLIP 26-38 ABA |
| 009 | | 25804 | FASCETTA STRINGITUBO 15-24 ABA | HOSE CLIP 15-24 ABA |
| 009 | | 25803 | FASCETTA STRINGITUBO 13-20 ABA | HOSE CLIP 13-20 ABA |
| 009 | | 30940 | RONDELLA PIANA NERA DIAM. 6 | FLAT SPACER, BLACK, DIA. 6 |
| 010 | | H200843 | GUARN.OR 2X13X17 F.SER. | OR GASKET 2X13X17 END OF SERIES |
| 010 | | H190209 | SUPPORTO MULINELLO SUPERIORE | SUPPORT, UPPER REVOLV.ARM |
| 010 | | H190649 | BUSSOLA PER MULINELLO | BUSH FOR WASHARM |
| 010 | | H191083 | COLONNINA INFERIORE STS48/BHC | LOWER COLUMN STS48/BHC |
| 010 | | H200820 | GUARN.OR 5,33X46,99X57,6 | OR GASKET 5,33X46,99X57,6 |

| Seite | Pos | Kredtor Artikel Nr. | IT | GB |
|-------|-----|---------------------|--------------------------------|--|
| 010 | | H261009 | VITE FISS. MULINELLO TUB.ACC. | RETAIN.SCREW FOR WASH-RINSE ARM |
| 010 | | H420531 | MULINELLO PL.MONTATO F20-BC | PLASTIC WASH-RINSE ARM, ASSEMB. F20-BC |
| 010 | | H420551 | MULIN.LAV.SUP.LBC-BHC MONT. C | UPPER WASH ARM GLASSWASHERS |
| 010 | | H160769 | TAPPO 1/2" X SUPPORTO MULIN. | PLUG 1/2" FOR REV.WASHARM SUPPORT |
| 010 | | H160736 | TAPPO MULINELLO LAVAGGIO | PLUG, REVOLV. WASHARM |
| 010 | | 33790 | GUARNIZIONE OR 2X9,5X13,5 F.S. | GASKET OR 2X9,5X13,5 F.S. |
| 010 | | H170956 | UGELLO LAVAGGIO "B" | WASH NOZZLE "B" |
| 010 | | 25750 | RONDELLA SPACCATA DIAM. 6 | SPACER, SPLITTED, DIAM 6 |
| 010 | | 25775 | DADO 6 MA | NUT 6 MA |
| 010 | | 30940 | RONDELLA PIANA NERA DIAM. 6 | FLAT SPACER, BLACK, DIA. 6 |
| 010 | | 33791 | UGELLO RISC. MULINELLO | RINSE JET, ROT.ARM |
| 010 | | 33792 | GUARNIZIONE OR 2,62X9,13X14,37 | GASKET OR 2,62X9,13X14,37 |
| 010 | | 33793 | TAPPO RISC. MULINELLO | PLUG, RINSE ARM |
| 010 | | 34332 | GUARNIZIONE OR 128 TAPPO SUPP. | GASKET OR 128 SUPP.PLUG |
| 010 | | H140108 | PIASTRINA X VITE FISS. MULIN. | PLATE F.CLAMP SCREW/WASH-RINSE ARM |
| 010 | | 25716 | VITE TE M 6 X 20 INOX | SCREW HEX.HD M 6 X 20 SS |
| 010 | | 27050 | GUARNIZIONE OR 2068 | GASKET OR 2068 |
| 011 | | 33543 | CONDENSATORE 5 UF-450 V | CAPACITOR 5 UF-450 V |
| 011 | | 35495 | GIRANTE POMPA ZF140 (35143) | PUMP IMPELLER ZF 140 (35143) |
| 011 | | 35497 | GUARNIZIONE OR 94,97x1,78 LGB | GASKET OR 94,97 X 1,78 LGB |
| 011 | | 35496 | CHIOCCIOLA POMPA ZF140 (35143) | PUMP SCROLL ZF 140 (35143) |
| 011 | | 33181 | TENUTA C3 (LGB)X POM.TIP.ZF140 | SHAFT SEAL C3 (LGB)FOR PUMP CODE 32926 |
| 011 | | 25776 | DADO 8 MA INOX 18/8 | NUTS 8 MA SS 18/8 |
| 011 | | 25757 | RONDELLA DENTEL. DIAM. 12 D.E. | TOOTHED SPACER DIAM. 12 D.E.D787 |
| 011 | | 35143 | ELETTROPOMPA HP.0,3 ZF140 50Hz | WASH PUMP HP .0,3 ZF140 50 Hz |
| 011 | | 35494 | FLANGIA POMPA ZF140 (35143) | PUMP FLANGE, ZF140 (35143) |
| 012 | | 35392 | RACCORDO VALV. A 90° BRILL.H/C | 90° VALVE FITTING, RINSE AID H/C |
| 012 | | 31596 | MEMBRANA DOSATORE | DIAPHRAGM, DISPENSER |
| 012 | | 31643 | FASCETTA A FILO 7,3-7,8 | HOSE CLIP 7,3-7,8 |
| 012 | | 31991 | GUIDA MOLLA DOSATORE | SPRING GUIDE FOR DISPENSER |
| 012 | | 32243 | GUARNIZIONE OR 3156 | GASKET OR 3156 |
| 012 | | 32280 | VITE TRUCC.T/TCROCE 4 X 13 | OVAL HD. CROSS-SL. SCREW 4 X 13 |
| 012 | | 32831 | GUARNIZIONE OR 2062 | GASKET OR 2062 |
| 012 | | 35388 | DOSATORE BRILL.GIALL. C/STS | RINSE AID DISP."YELLOW" C/STS |
| 012 | | H200117 | TUBO GOMMA 8X15 INDUSTRIA 10 | RUBBER HOSE 8X16, INDUSTR,10 |
| 012 | | 25251 | GUARNIZIONE OR 2012 | GASKET OR 2012 |
| 012 | | 28252 | RACCORDO ASPIRAZ.DOSATORE | FITTING SUCTION DISPENSER |
| 012 | | 33424 | FASCETTA FE ZN 11-17 H=9 | FE-ZN CLAMP 11-17 H=9 |
| 012 | | 18394 | VITE REGOLAZ.DOSATORE | SCREW CONTROL DISPENSER |
| 012 | | 25803 | FASCETTA STRINGITUBO 13-20 ABA | HOSE CLIP 13-20 ABA |
| 012 | | 25818 | MOLLA CILINDRICA (FILO) | CYLINDER SPRING (WIRE) |
| 012 | | 00166 | TUBETTO TRASP. 4x7 IN ROTOLO | ROLL TUBE TRANSP. 4X7 |
| 012 | | 15229 | DADO FISS. DOSATORE | LOCK NUT AID DISPENSER |
| 012 | | 18750 | SQUADRETTA DOSATORE BRILL. | SQUARE, RINSE AGENT DISPENSER |
| 012 | | 25046 | CORPO DOSATORE SUPER. | UPPER DISPENSER ASSEMBLY |
| 012 | | 25047 | CORPO DOSATORE INFER. | LOWER DISPENSER ASSEMBLY |
| 012 | | 25211 | VALVOLINA MAND.-ASPIRAZ.DOSAT. | NON RETURN VALVE RINSE AID DISP. |
| 012 | | 25757 | RONDELLA DENTEL. DIAM. 12 D.E. | TOOTHED SPACER DIAM. 12 D.E.D787 |
| 012 | | 00182 | TUBO GOMMA 11X19 CASER/15"BLU" | HOSE 11X19 CASER/15"BLUE" |