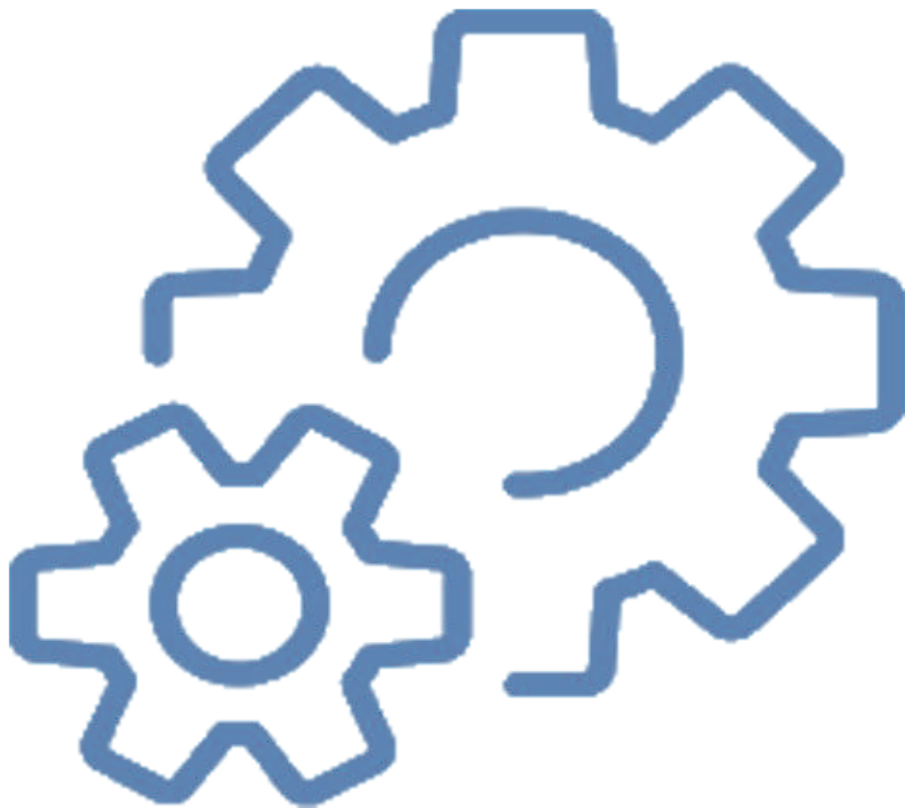
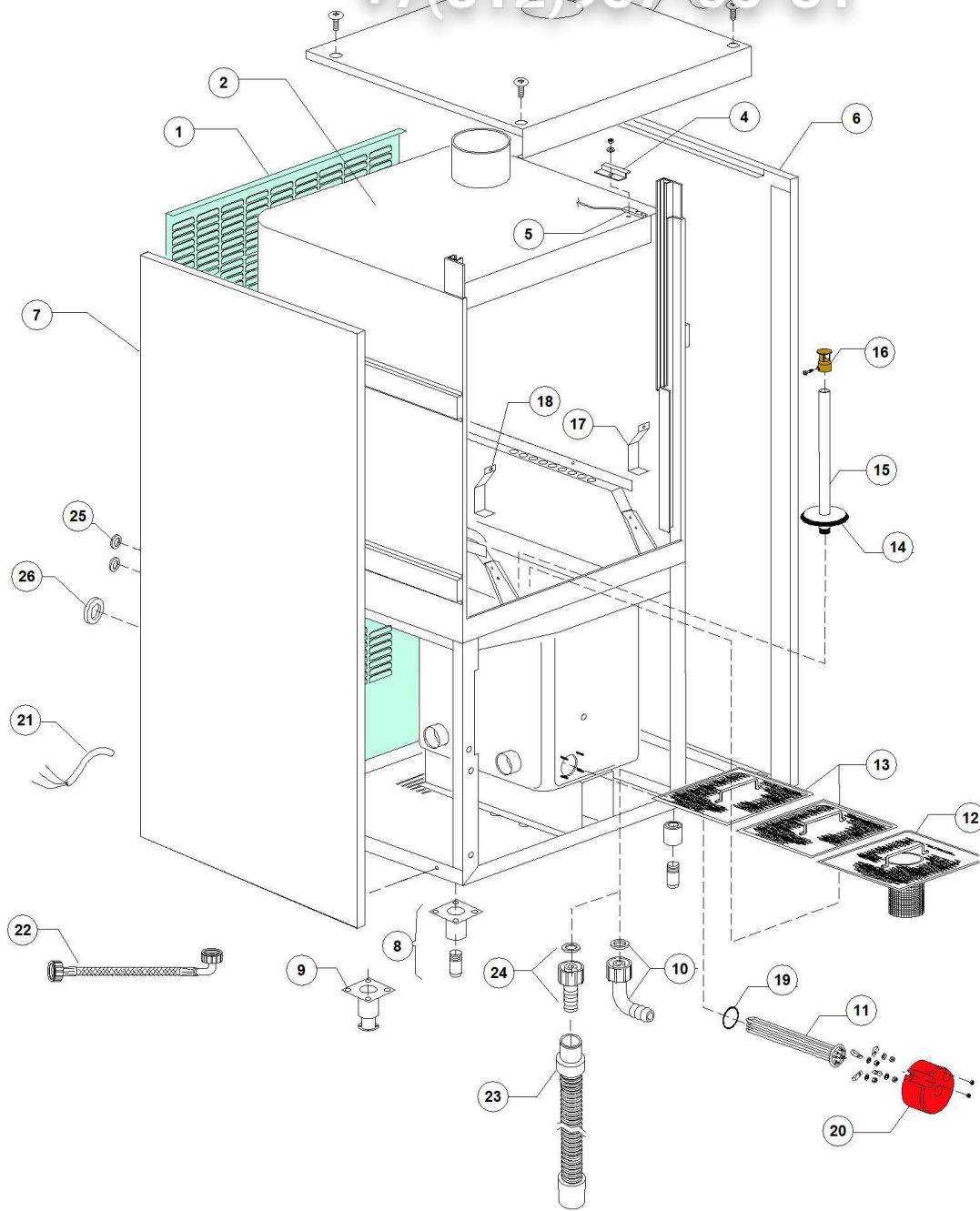


Зип Общепит  
vsezip.ru  
+7(812)987-08-81

Catalogo ricambi  
Spare parts catalog  
Catalogue de pièces détachées  
Ersatzteilkatalog  
Catálogo de repuestos  
Catálogo de peças de reposição  
каталог запасных частей



+7(812)987-08-81



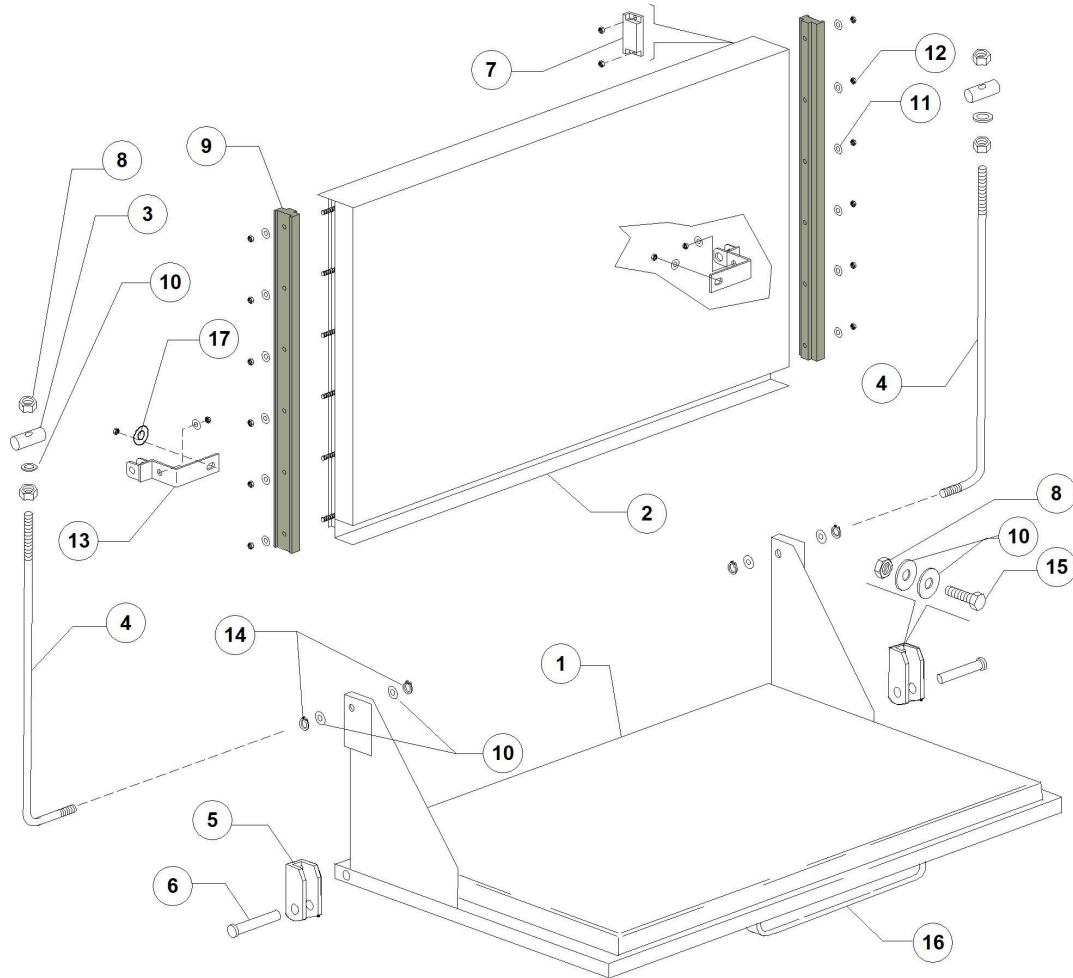
# Зип Общепит

vsozip.ru

LP2 S PLUS PS XP DDE PAP 380-400/3N/50 DW11013 198 Gruppo carrozzeria - DW118E

+7(812)987 08-81

| Pos. | Codice     | Descrizione                             | Description                         |
|------|------------|---|-------------------------------------|
| 1    | DW91004    | PANNELLO POSTERIORE                     | BACK PANEL                          |
| 2    | DW91000    | CARROZZERIA                             | BODYWORK                            |
| 3    | DW91005    | COPERCHIO P2S                           | COVER P2S                           |
| 4    | DW3009112  | SUPPORTO REED ECONOMIZZATORE            | ECONOMIZER MICROSWITCH SUPPORT      |
| 5    | DW3003112  | REED MICRO PORTA                        | MAGNETIC REED SWITCH                |
| 6    | DW91002    | PANNELLO DESTRO P2S/P3S                 | RIGHT SIDE PANEL P2S/P3S            |
| 7    | DW91003    | PANNELLO SINISTRO P2S/P3S               | LEFT SIDE PANEL P2S/P3S             |
| 8    | DW80116    | PIEDINO REGOLABILE 112-215 2"           | ADJUSTABLE FOOT 112-215 2"          |
| 10   | DW15613    | GOMITO DI SCARICO                       | DRAIN ELBOW                         |
| 11   | DW30001010 | RESISTENZA 6000/6530W 230/240V 3        | 6000/6530W 230/240V 3 HEATING ELEM. |
| 12   | DW11600906 | FILTRO VASCA ANTERIORE                  | TANK FRONT FILTER                   |
| 13   | DW11600907 | FILTRO VASCA POSTERIORE                 | TANK BACK FILTER                    |
| 14   | DW11600002 | GUARNIZIONE A FLANGIA                   | FLANGE GASKET                       |
| 15   | DW91101    | ASSIEME TROPPOPIENO                     | OVERFLOW PIPE ASSEMBLY              |
| 16   | DW11600019 | TAPPO PER TROPPOPIENO                   | OVERFLOW PIPE PLUG                  |
| 17   | DW22254    | PARASPRUZZI INFERIORE                   | LOWER SPLASH GUARD                  |
| 18   | DW22254    | PARASPRUZZI INFERIORE                   | LOWER SPLASH GUARD                  |
| 19   | DW13015    | GUARNIZIONE 6225 OR 160 NBR (MIN. 5 PZ) | 6225 O-RING 160 NBR (MIN. 5 PCS)    |
| 20   | DW75311    | CUFFIOTTO PER RESISTENZA                | HEATING ELEMENT COVER               |
| 21   | DW80200    | CAVO ALIMENTAZIONE 5X4X3400             | CABLE 5X4X3400                      |
| 22   | DW10726    | CANNA DI CARICO                         | LOAD PIPE                           |
| 24   | DW15613/A  | PORTAGOMMA DRITTO                       | STRAIGHT HOSE CONNECTOR             |
| 25   | DW13323    | PASSACAPO IN GOMMA D.13 (MIN. 2 PZ)     | RUBBER FAIRLEAD D.13 (MIN. 2 PCS)   |
| 26   | DW13324    | PASSACAPO IN GOMMA D.46X50              | RUBBER FAIRLEAD D.46X50             |



# Зип Общепит

vsezip.ru

LP2 S PLUS PS XP DDE PAP 380-400/3N/5C - DW11018198 - Porta - DW118E

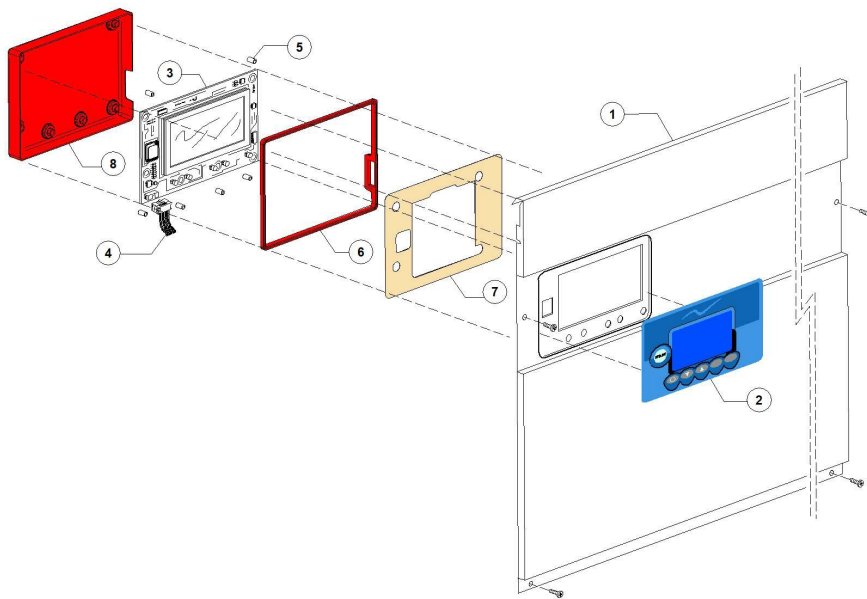
| Pos. | Codice    | Descrizione                                     | Description                                  |
|------|-----------|---|--|
| 1    | DW91000/A |   | COMPLETE LOWER DOOR P2S                      |
| 2    | DW91000/B |   | COMPLETE TOP DOOR P2S                        |
| 3    | DW22219   | CILINDRETTI PORTA                               | SMALL DOOR CYLINDERS                         |
| 4    | DW22220   | ASTA PORTA                                      | DOOR ROD                                     |
| 5    | DW22206/B | CERNIERA PORTA                                  | DOOR HINGE                                   |
| 6    | DW22220/A | PERNO INOX PER CERNIERA PER PORTA               | DOOR HINGE S/S STUD                          |
| 7    | DW80232   | MAGNETE PER REED                                | REED MAGNETIC UNIC                           |
| 8    | DW11721   | DADO M6 AUTOBLOCCANTE INOX DIN982 (MIN. 10 PZ.) | S/S SELF-LOCKING NUT M6 DIN982 (MIN. 10 PCS) |
| 9    | DW90024   | PATTINO SCORRIMENTO PORTA                       | DOOR SLIDING GUIDE                           |
| 10   | DW11177   | RONDELLA 6X12 PIANA INOX UNI6592 DIN125         | 6X12 S/S PLAIN WASHER UNI6592 DIN125         |
| 11   | DW11176   | RONDELLA 5X10 PIANA INOX UNI6592 DIN125         | 5X10 S/S PLAIN WASHER UNI6592 DIN125         |
| 12   | DW11169   | DADO M5 AUTOBLOCCANTE INOX DIN982               | S/S SELF-LOCKING NUT M5 DIN982               |
| 13   | DW90916   | STAFFA MOVIMENTO PORTA                          | DOOR MOVEMENT SUPPORT                        |
| 14   | DW11815   | SEEGER D.8 INOX (MIN. 5 PZ)                     | SNAP RING D.8 S/S                            |
| 15   | DW11104/B | VITE M6X16 INOX TE DIN933                       | M6X16 TE S/S SCREW DIN933                    |
| 17   | DW11185   | RONDELLA 8X16 PIANA INOX DIN125                 | 8X16 S/S PLANE WASHER DIN125                 |

# Зип Общепит

vsezip.ru

LP2 S PLUS PS XP DDE PAP 380-400/3N/50 - DW118198 - Pannello comandi - DW118E

+7(812)987-08-81

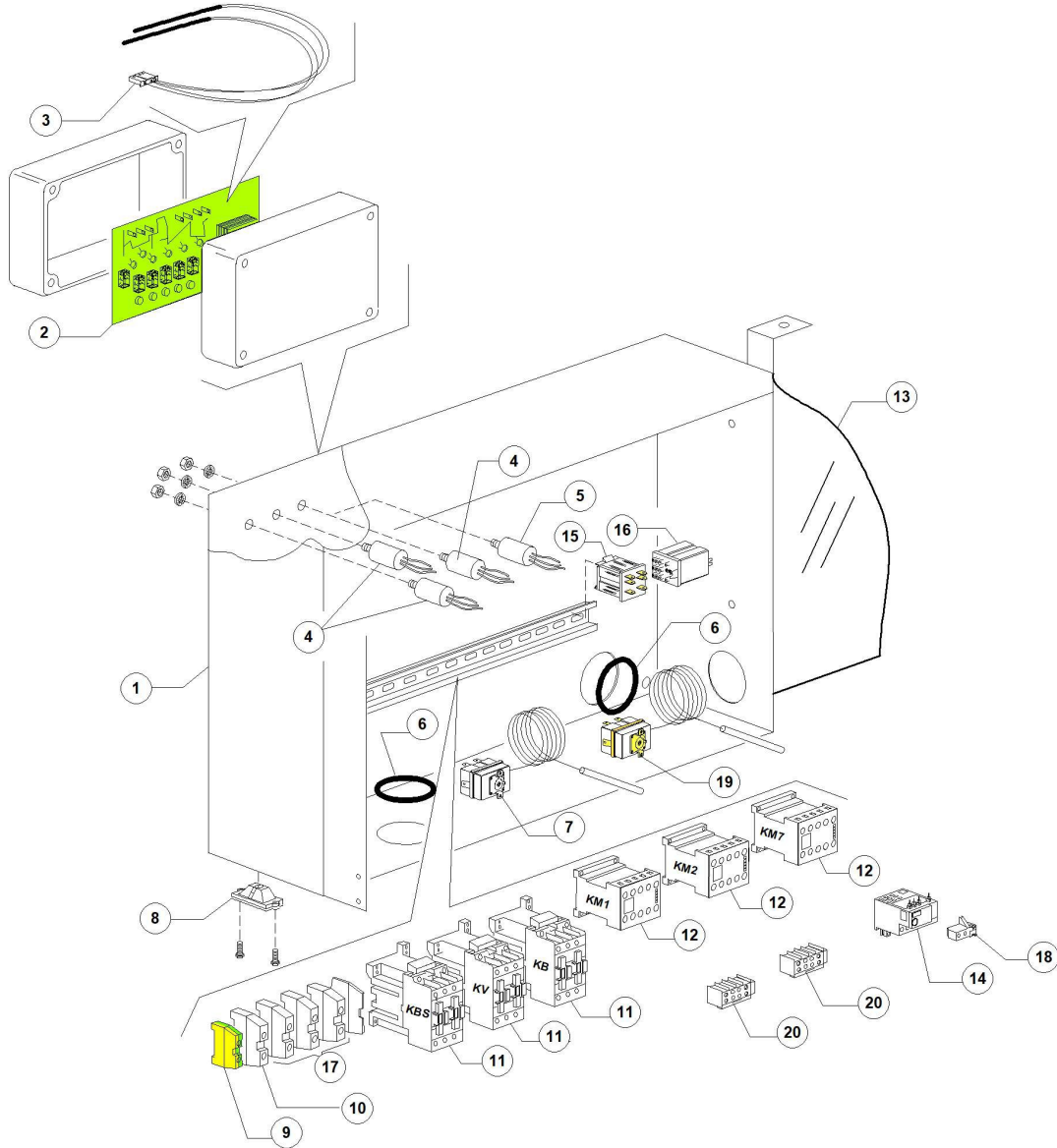


# Зип Общепит

vsozip.ru

**LP2 S PLUS PS XP DDE PAP 380-400/3N/50 - DW118198 - Pannello comandi - DW118E**

| Pos. | Codice    | Descrizione                     | Description                             |
|------|-----------|---------------------------------|---|
| 1    | DW91013   | SOTTOPORTA/PANNELLO COMANDI     | FRONT PANEL/CONTROL PANEL               |
| 2    | DW96704   | MOSTRINA DIHR                   | CONTROL OVERLAY DIHR                    |
| 3    | DW50650   | TASTIERA CON DISPLAY            | KEY BOARD WITH DISPLAY                  |
| 4    | DW50651   | PIATTINA MULTIFILO F16p L1000   | RIBBON CABLE F16p L1000                 |
| 5    | DW50561   | DISTANZIALE SCHEDA D.8X10       | MAINBOARD SPACER D.8X10                 |
| 6    | DW50650/B | GUARNIZIONE SCATOLA DW50650/A   | PROTECTION BOX GASKET DW50650/A         |
| 7    | DW96716   | PROTEZIONE ISOLANTE PULSANTIERA | PUSH BUTTON PANEL INSULATING PROTECTION |
| 8    | DW50650/A | SCATOLA PROTEZIONE SCHEDA 50650 | ELECTRONIC BOARD PROTECTION BOX 50650   |





**LP2 S PLUS PS XP DDE PAP 380-400/3N/50 DW118198 - Componenti elettrici - DW118E**

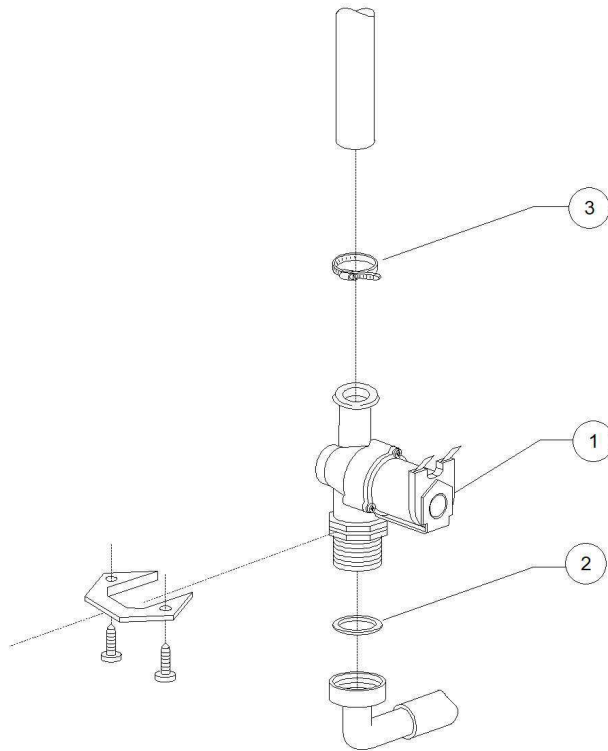
| Pos. | Codice     | Descrizione                              | Description                           |
|------|------------|--|---------------------------------------|
| 1    | DW91001    | PANNELLO PORTACOMPONENTI                 | ELECTRIC COMPONENTS PANEL             |
| 2    | DW91120    | SCHEDA MADRE P2S-P3S-P4S8 PLUS 2009 (BL) | MAINBOARD P2S-P3S-P4S8 PLUS 2009 (BL) |
| 3    | DW50562    | SONDA TERMOSTATO                         | THERMOSTAT PROBE                      |
| 4    | DW15149    | FILTRO ANTIDISTURBO F3 0,33MF            | ANTIJAMMING FILTER F3 (CX0.47MF)      |
| 6    | DW13324    | PASSACAPO IN GOMMA D.46X50               | RUBBER FAIRLEAD D.46X50               |
| 7    | DW2000430  | TERMOSTATO DI SICUREZZA                  | SAFETY THERMOSTAT                     |
| 8    | DW15065/A  | FISSACAPO CON VITI (2X11007)             | CABLE-FASTENER WITH SCREW             |
| 9    | DW3006173  | MORSETTO 16mmq GIALLO/VERDE              | TERMINAL 16mmq YELLOW/GREEN           |
| 10   | DW3006155  | MORSETTO NEUTRO 16mmq BLU                | TERMINAL 16mmq BLEU                   |
| 11   | DW10300050 | TELERUTTORE 25A/12A 4NA 230V 50-60HZ     | CONTACTOR 25A/12A 4NA 230V 50-60HZ    |
| 12   | DW15086    | TELERUTTORE 230V 50/60Hz 4C AC3(6A)      | CONTACTOR 230V 50/60Hz 4C AC3(6A)     |
| 13   | DW11600039 | PROTEZIONE COMPONENTI ELETTRICI          | ELECTRICAL COMPONENTS PROTECTION      |
| 16   | DW560301   | RELÈ 230V 50/60Hz GUIDA DIN              | RELAY 230V 50/60Hz DIN RAIL           |
| 17   | DW3006082  | MORSETTO 16mmq                           | TERMINAL 16mmq                        |
| 20   | DW3006068  | CONTATTO AUSILIARIO PER MC9 1NO-1NC      | MC9 AUXILIARY CONTACT 1NO-1NC         |

# Зип Общепит

vsezip.ru

LP2 S PLUS PS XP DDE PAP 380-400/3N/50 - DW118E - Valvola di carico - DW118E

## +7(812)987-08-81



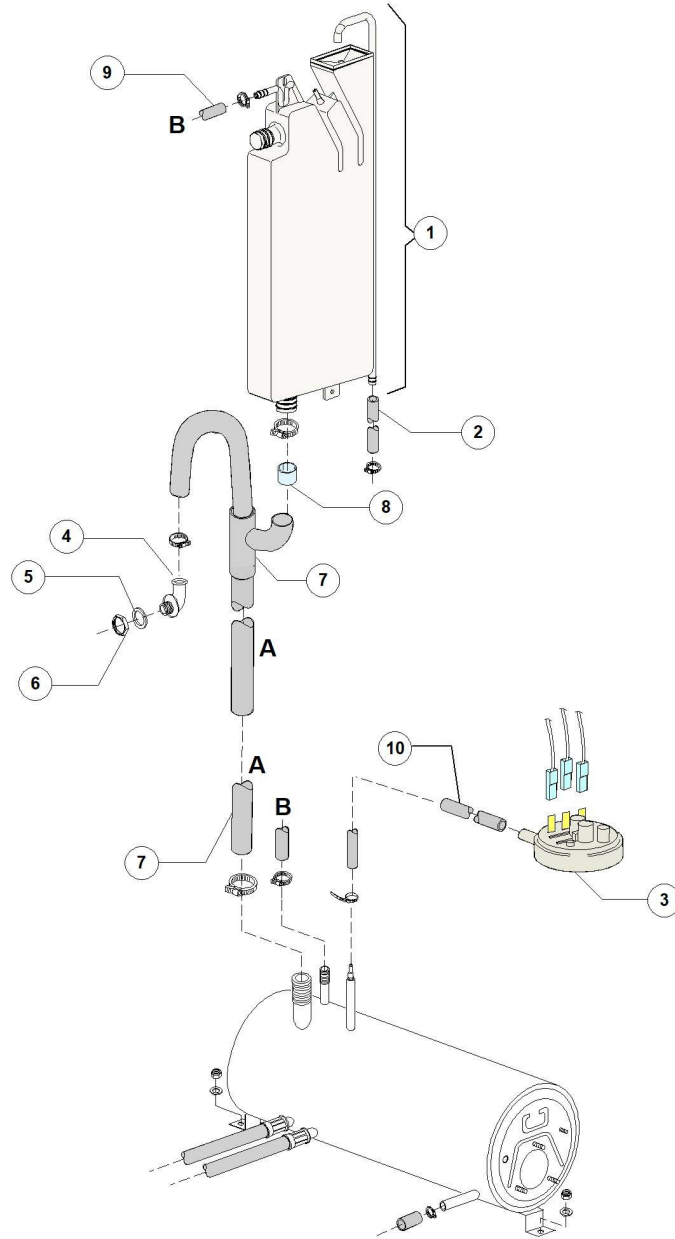
# Зип Общепит

vsozip.ru

**LP2 S PLUS PS XP DDE PAP 380-400/3N/50 - DW118E - Valvola di carico - DW118E**

| Pos. | Codice  | Descrizione                         | Description                       |
|------|---------|-------------------------------------|-----------------------------------|
| 1    | DW10703 | ELETTRORVALVOLA SINGOLA H20 230V    | SINGLE SOLENOID VALVE H20 230V    |
| 2    | DW13307 | GUARNIZIONE 3/4 CARICO              | O-RING 3/4 LOAD H20 DIS.LS061     |
| 3    | DW11807 | FASCETTA AISI 430 12/22 (MIN. 3 PZ) | CLAMP 12/22 AISI 430 (MIN. 3 PCS) |

+7(812)987-08-81



# Зип Цеппит

ysozip.ru

LP2 S PLUS PS XP DDE PAP 380-400/3N/50 - PVH L 0.8193 - Break Tank - DW118E

| Pos. | Codice    | Descrizione                        | Description                              |
|------|-----------|------------------------------------|--|
| 1    | DW15720   | ASSIEME BREAK TANK 3.5LT           | BREAK TANK ASSEMBLY 3.5 LT               |
| 2    | DW2907352 | TUBO GOMMA PVC WRAS                | PVC WRAS RUBBER PIPE                     |
| 3    | DW10706/A | PRESSOSTATO 46-26                  | PRESSURE SWITCH 46-26                    |
| 4    | DW10701   | GOMITO DI SCARICO                  | DRAIN ELBOW                              |
| 5    | DW13305   | GUARNIZIONE GOMITO SCARICO 44X32X3 | O-RING FOR DRAIN ELBOW 44x32x3 DIS.LS061 |
| 6    | DW11701/A | DADO INOX                          | S/S NUT                                  |
| 7    | DW91112   | MANICOTTO EPDM                     | LOADING/SAFETY PIPES ASSEMBLY            |
| 8    | DW12533   | RINFORZO COLLARE USCITA BREAK TANK | BREAK TANK OUTLET COLLAR REINFORCEMENT   |
| 9    | DW2907351 | TUBO GOMMA EPDM 11,5X19            | 11,5X19 EPDM RUBBER PIPE                 |
| 10   | DW14506   | TUBO GOMMA EPDM 9.5X16             | 9,5X16 EPDM RUBBER PIPE 9.5X16           |



# Зип Общепит

vsezip.ru

LP2 S PLUS PS XP DDE PAP 380-400/3N/50 - DW110193 - Pompa aumento pressione - DW118E

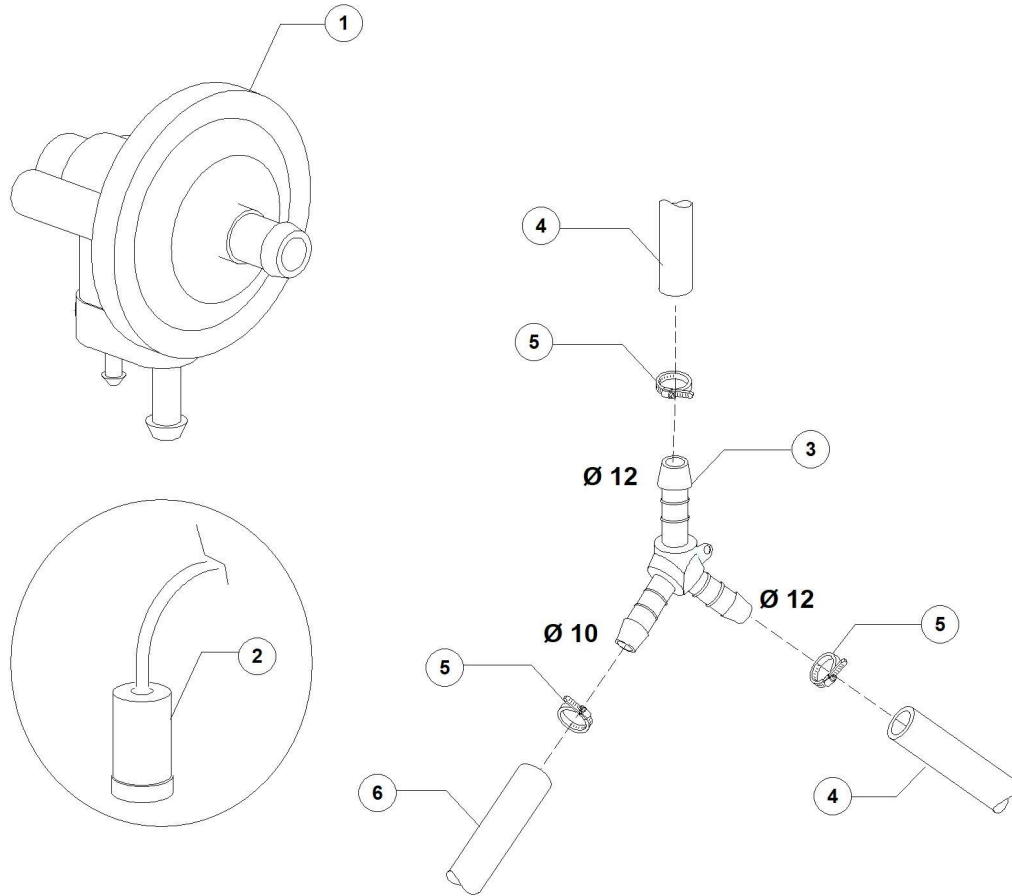
| Pos. | Codice     | Descrizione                         | Description                      |
|------|------------|-------------------------------------|----------------------------------|
| 1    | DW15100/DO | POMPA RISCIAQUO 220-240/50HZ (PLUS) | RINSE PUMP 220-240V, 50HZ (PLUS) |
| 2    | DW16043    | CONDENSATORE 5 UF                   | 5 UF CONDENSER                   |
| 3    | DW15100/S  | TENUTE ROTANTI EPDM (15100/DO)      | EPDM ROTARY SEAL (15100/DO)      |
| 4    | DW15100/T  | GUARNIZIONE OR (15100/DO)           | O-RING EPDM (15100/DO)           |
| 5    | DW15100/U  | GIRANTE POMPA 90X2,5 (DW15100/DO)   | PUMP ROTOR 90X2.5 (DW15100/DO)   |
| 6    | DW15100/V  | CHIOCCIOLA POMPA 15100/DO           | SCROLL FOR PUMP 15100/DO         |
| 7    | DW2907351  | TUBO GOMMA EPDM 11,5X19             | 11,5X19 EPDM RUBBER PIPE         |
| 8    | DW91111    | ASSIEME TUBI ASPIRAZIONE D.12       | EXHAUSTER PIPE ASSEMBLY D.12     |

# Зип Общепит

vsezip.ru

LP2 S PLUS PS XP DDE PAP 380-400/3N/50 - DW1201-12E - Gruppo dosatore Brillantante - DW118E

+7(812)987-08-81





# Зип Общепит

vszip.ru

LP2 S PLUS PS XP DDE PAP 380-400/3N/50 - DW1018198 - Gruppo dosatore Brillantante - DW118E

| Pos. | Codice    | Descrizione                         | Description                       |
|------|-----------|-------------------------------------|-----------------------------------|
| 1    | DW10799/G | DOSATORE BRILLANTANTE               | RINSE AID DOSING PUMP             |
| 2    | DW15058   | FILTRINO (MIN. 3 PZ)                | SMALL FILTER (MIN. 3 PCS)         |
| 3    | DW540105  | DERIVAZIONE 3 VIE D.10-12-12        | Y-PIECE D.10-12-12                |
| 4    | DW2907351 | TUBO GOMMA EPDM 11,5X19             | 11,5X19 EPDM RUBBER PIPE          |
| 5    | DW11807   | FASCETTA AISI 430 12/22 (MIN. 3 PZ) | CLAMP 12/22 AISI 430 (MIN. 3 PCS) |

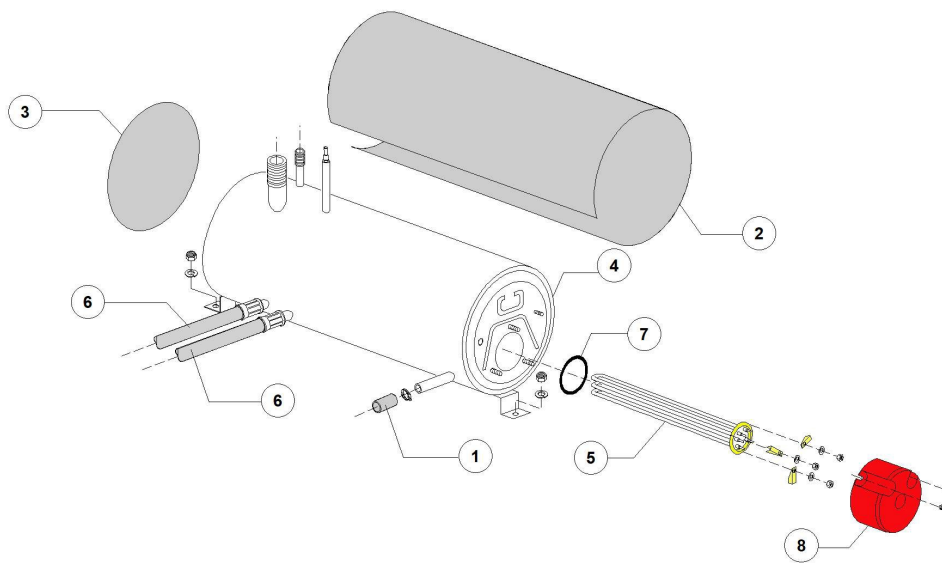
+7(812)987-08-81

# Зип Ощепит

vsezip.ru

LP2 S PLUS PS XP DDE PAP 380-400/3N/50 - DW110 B3198 Gruppo boiler - DW118E

## +7(812)987-08-81



# Зип Общепит

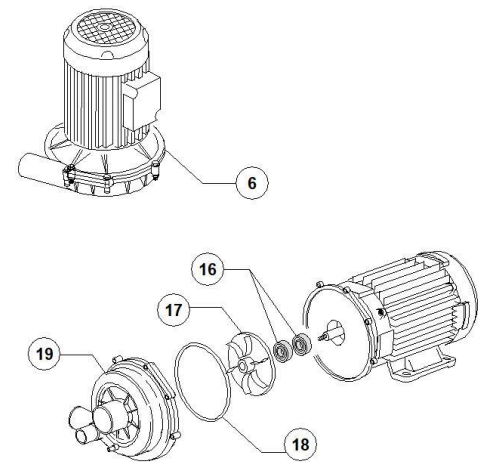
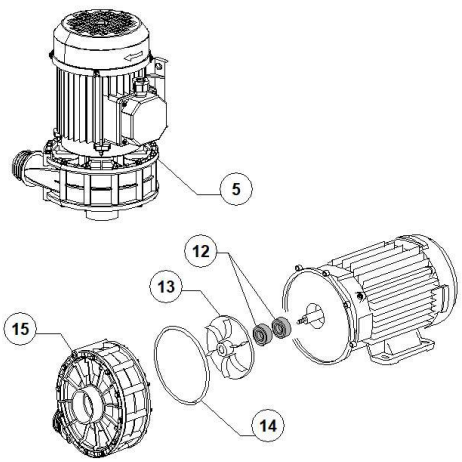
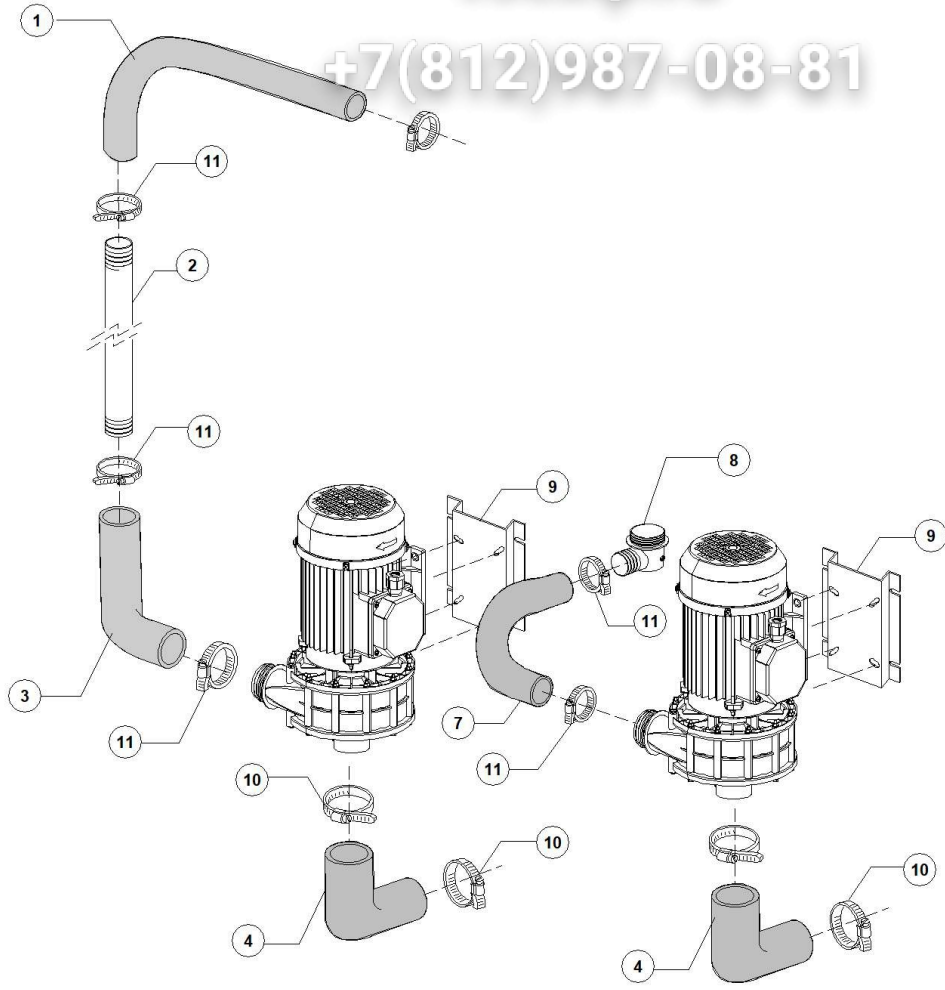
vsezip.ru

LP2 S PLUS PS XP DDE PAP 380-400/3N/50 - DW11013198 Gruppo boiler - DW118E

| Pos. | Codice       | Descrizione                             | Description                           |
|------|--------------|---|---------------------------------------|
| 1    | DW10200293   | TUBO EPDM 8X15                          | 8X15 EPDM PIPE                        |
| 2    | DW91116      | COIBENTE BOILER 600X680                 | BOILER INSULATING 600X680             |
| 3    | DW91115      | DISCO ESPANSOLENE D.190                 | INSULATING DISK D.190                 |
| 4    | DW91104      | BOILER ATMOSFERICO AISI 316             | ATMOSPHERIC BOILER AISI 316           |
| 5    | DW30001010   | RESISTENZA 6000/6530W 230/240V 3        | 6000/6530W 230/240V 3 HEATING ELEM.   |
| 5    | DW30001011/A | RESISTENZA 12000/13070W 230/240V 3      | 12000/13070W 230/240V 3 HEATING ELEM. |
| 6    | DW91111      | ASSIEME TUBI ASPIRAZIONE D.12           | EXHAUSTER PIPE ASSEMBLY D.12          |
| 7    | DW13015      | GUARNIZIONE 6225 OR 160 NBR (MIN. 5 PZ) | 6225 O-RING 160 NBR (MIN. 5 PCS)      |
| 8    | DW75311      | CUFFIOTTO PER RESISTENZA                | HEATING ELEMENT COVER                 |

+7(812)987-08-81

+7(812)987-08-81



# Зип Общепит

vsezip.ru

**LP2 S PLUS PS XP DDE PAP 380-400/3N/50 - DW118E - P 198 Gruppo pompa di lavaggio - DW118E**

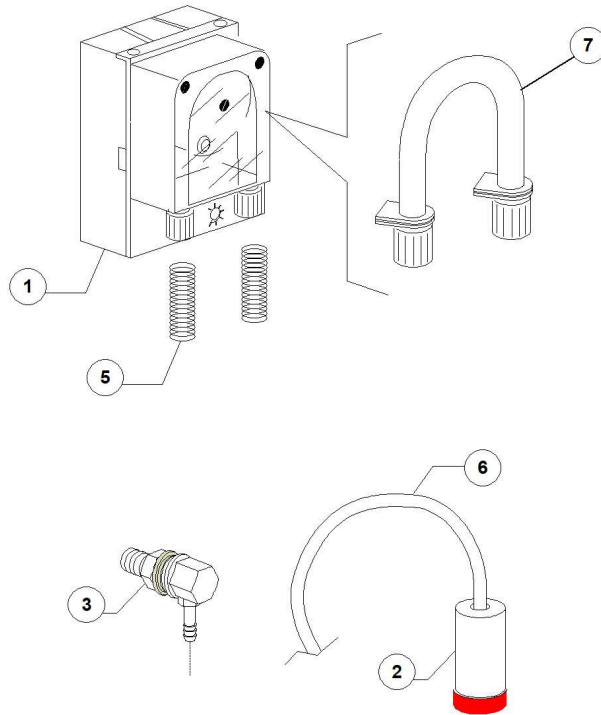
| Pos. | Codice       | Descrizione                         | Description                       |
|------|--------------|-------------------------------------|-----------------------------------|
| 1    | DW91106      | MANICOTTO MANDATA 45/45             | DELIVERY PIPE COUPLING 45/45      |
| 2    | DW91105      | RAMPA DI LAVAGGIO P2S               | WASH RISER P2S                    |
| 3    | DW91106      | MANICOTTO MANDATA 45/45             | DELIVERY PIPE COUPLING 45/45      |
| 4    | DW3002020    | MANICOTTO A GOMITO D.60             | ELBOW PIPE COUPLING D.60          |
| 5    | DW22037      | POMPA HP2.0 220-240/380-415V3/50HZ  | PUMP HP2.0 220-240/380-415V3/50HZ |
| 6    | DW22037      | POMPA HP2.0 220-240/380-415V3/50HZ  | PUMP HP2.0 220-240/380-415V3/50HZ |
| 7    | DW91108      | MANICOTTO MANDATA INFERIORE         | LOWER DELIVERY PIPE COUPLING      |
| 8    | DW90008      | TORRETTA INFERIORE/SUPERIORE        | LOWER / UPPER SUPPORT             |
| 9    | DW11600623   | STAFFA SUPPORTO POMPA               | PUMP SUPPORT G12                  |
| 10   | DW2902491    | FASCETTA AISI 430 60/80 (MIN. 2 PZ) | CLAMP 60/80 AISI 430 (MIN. 2 PCS) |
| 11   | DW11824      | FASCETTA AISI 430 50/70 (MIN. 2 PZ) | CLAMP 50/70 AISI 430 (MIN. 2 PCS) |
| 12   | DW15080      | TENUTE ROTANTI                      | ROTATING SEALS                    |
| 13   | DW22045/O    | GIRANTE POMPA                       | PUMP ROTOR (PUMP 2HP)             |
| 14   | DW10200290/O | GUARNIZIONE OR                      | OR 1225 GASKET                    |
| 15   | DW10200222/O | CHIOCCIOLA                          | SCROLL                            |
| 16   | DW15080      | TENUTE ROTANTI                      | ROTATING SEALS                    |
| 17   | DW22045      | GIRANTE POMPA (POMPA DA 2HP)        | PUMP ROTOR (PUMP 2HP)             |
| 18   | DW10200290   | GUARNIZIONE OR 1225                 | OR 1225 GASKET                    |
| 19   | DW10200222   | CHIOCCIOLA                          | SCROLL                            |

# Зип Общепит

vsezip.ru

LP2 S PLUS PS XP DDE PAP 380-400/3N/50 DW118198 Dosatore detersivo - DW118E

## +7(812)987-08-81

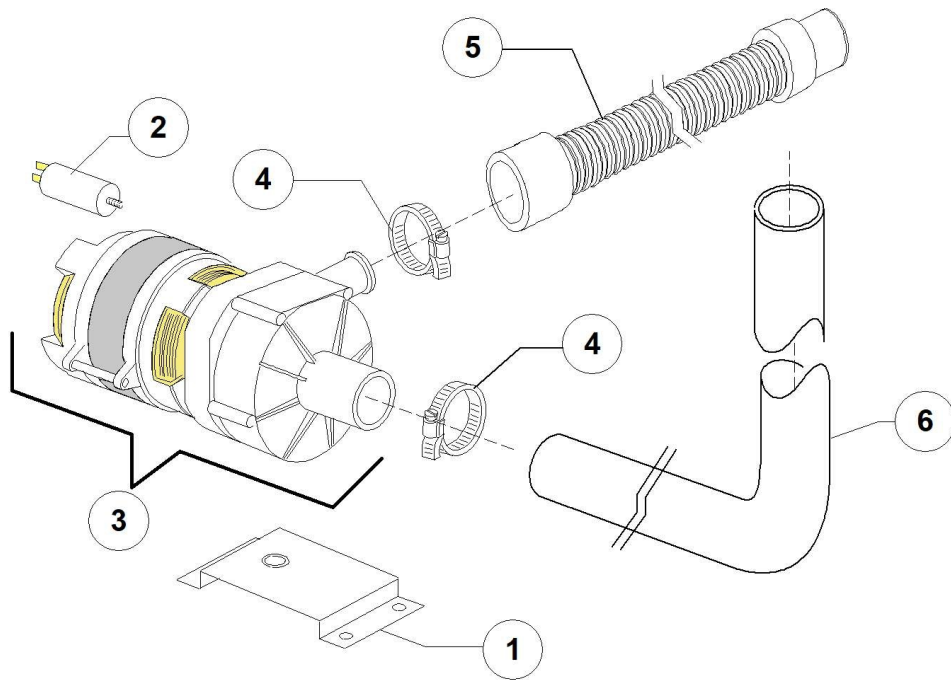


# Зип Общепит

vsezip.ru

LP2 S PLUS PS XP DDE PAP 380-400/3N/50 DW11018198 Dosatore detersivo - DW118E

| Pos. | Codice    | Descrizione                           | Description                           |
|------|-----------|---------------------------------------|---------------------------------------|
| 1    | DW15985   | DOSATORE DETERGENTE 0-3L/H            | DETERGENT DOSING PUMP 0-3L/H          |
| 2    | DW15058   | FILTRINO (MIN. 3 PZ)                  | SMALL FILTER (MIN. 3 PCS)             |
| 3    | DW15123   | INIETTORE PER DOSATORE DETERSIVO INOX | S/S DOSING PUMP INJECTOR              |
| 5    | DW10763   | MOLLA INOX PER TUBO                   | PIPE S/S SPRING                       |
| 6    | DW14503   | TUBO PVC TRASPARENTE D.6X4            | D.6X4 PVC TRANSPARENT HOSE            |
| 7    | DW15108/E | TUBO TERMOPLASTICO DOSATORE GERMAC    | GERMAC DISPENSER THERMOPLASTIC HOSE   |
| 7    | DW15185   | TUBO TERMOPLASTICO DOSATORE SEKO      | SEKO DISPENSER THERMOPLASTIC HOSE     |
| 7    | DW15297   | TUBO TERMOPLASTICO DOSATORE SEKO      | SEKO DISPENSER THERMOPLASTIC HOSE     |
| 7    | DW15297/T | TUBO TERMOPLASTICO DOSATORE TECNOPRO  | TECNOPRO DISPENSER THERMOPLASTIC HOSE |
| 7    | DW15985/A | #TUBO TERMOPLASTICO DDE MICRODOS      | MICRODOS THERMOPLASTIC PIPE           |





# Зип Общепит

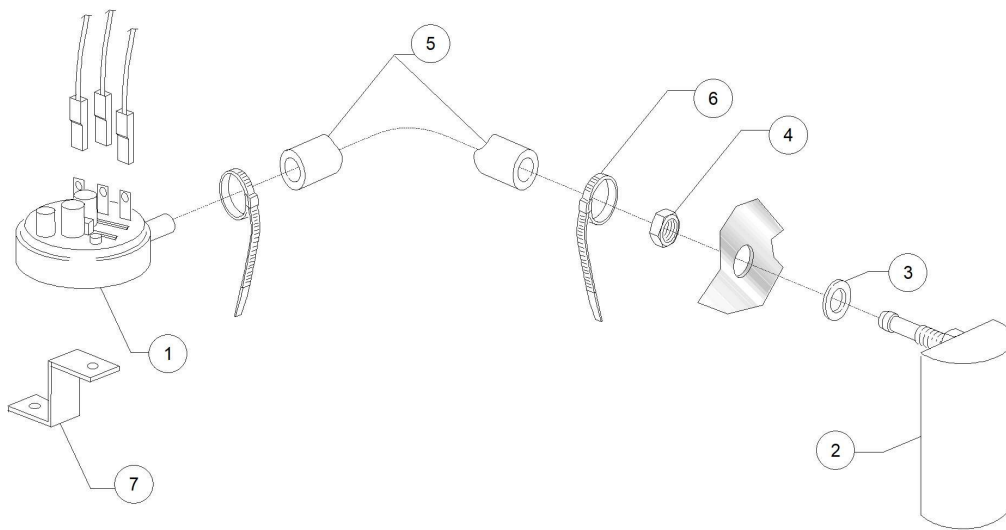
vsezip.ru

LP2 S PLUS PS XP DDE PAP 380-400/3N/50 - DW118193 - Gruppo pompa di scarico - DW118E

| Pos. | Codice    | Descrizione                         | Description                       |
|------|-----------|-------------------------------------|-----------------------------------|
| 1    | DW440122  | SUPPORTO POMPA LAVAGGIO             | WASH PUMP SUPPORT                 |
| 2    | DW10702   | CONDENSATORE 5 UF                   | 5 UF CONDENSER                    |
| 3    | DW10501/A | POMPA 190W 230V/50HZ                | PUMP 190W 230V/50HZ               |
| 4    | DW11806   | FASCETTA AISI 430 25/40 (MIN. 2 PZ) | CLAMP 25/40 AISI 430 (MIN. 2 PCS) |
| 5    | DW10727   | CANNA DI SCARICO                    | DRAIN HOSE                        |
| 6    | DW18044   | TUBO EPDM D.28                      | D.28 EPDM PIPE                    |

+7(812)987-08-81

+7(812)987-08-81



# Зип Общепит

vsezip.ru

**LP2 S PLUS PS XP DDE PAP 380-400/3N/50 DW1018198 Pressostato - DW118E**

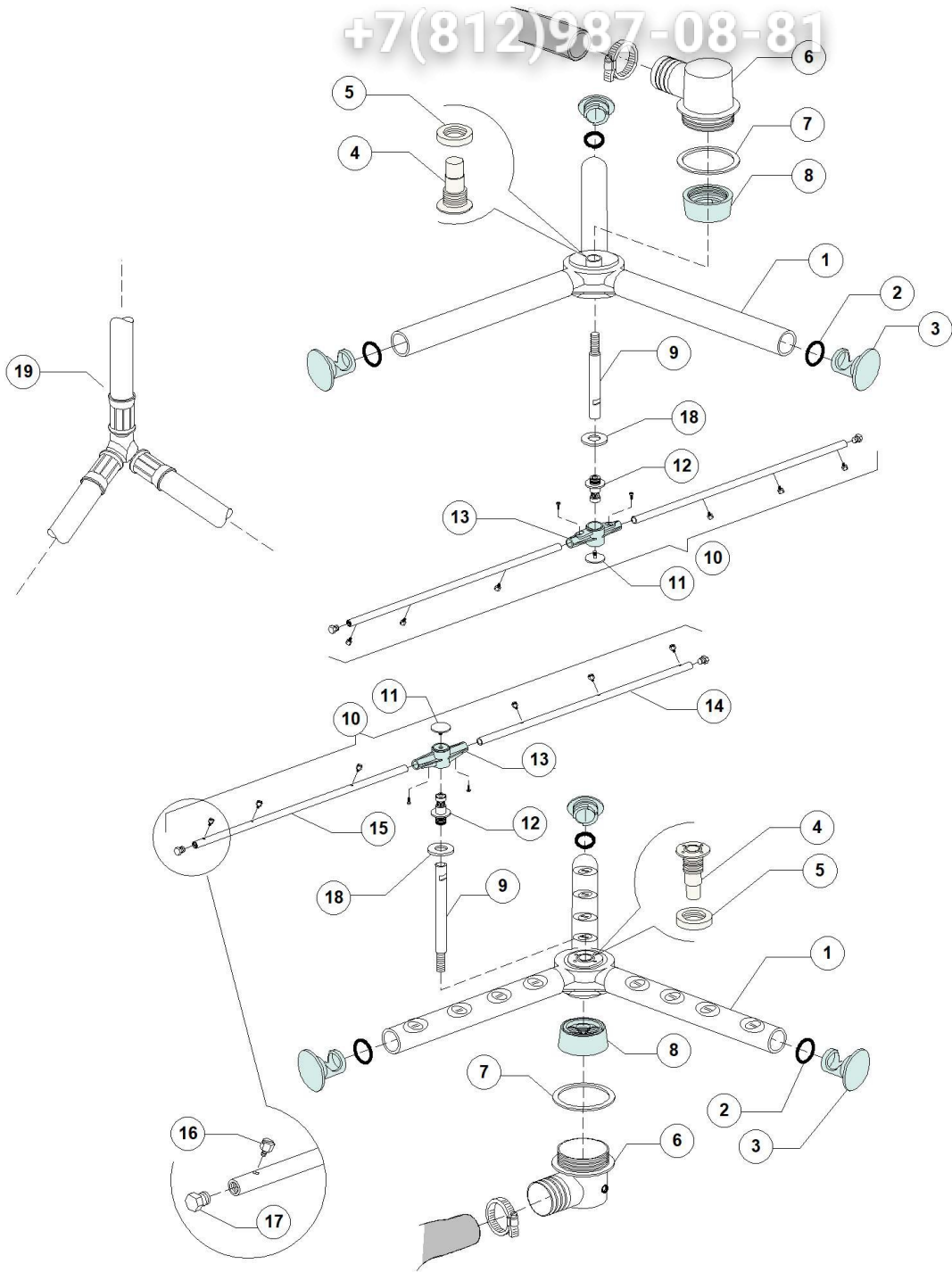
| Pos. | Codice    | Descrizione                        | Description                            |
|------|-----------|------------------------------------|--|
| 1    | DW88110   | PRESSOSTATO 250-40                 | PRESSURE SWITCH 250-40                 |
| 2    | DW135911  | ASSIEME GABBIA D'ARIA GRIGIA L90   | GREY AIR TRAP ASSEMBLY L90             |
| 3    | DW13301   | GUARNIZIONE D14X8X1,5 (MIN. 10 PZ) | O-RING ROLMART D14X8X1,5 (MIN. 10 PCS) |
| 4    | DW11702   | DADO M8 INOX DIN934 (MIN. 20 PZ)   | S/S NUT M8 DIN934 (MIN. 20 PCS)        |
| 5    | DW14508   | TUBO EPDM 4,5X9 (MIN. 2 MT)        | EPDM HOSE 4.5X9 (MIN. 2 MT)            |
| 6    | DW10738   | FASCETTA PLASTICA 98X2,5           | PLASTIC CLAMP 98X2,5                   |
| 7    | DW3009363 | SUPPORTO PRESSOSTATO               | PRESSURE-SWITCH SUPPORT                |

# Зип Ощепит

LP2 S PLUS PS XP DDE PAP 380-400/3N/50 - DW110 e 193 - Gruppo lavaggio-risciacquo - DW118E

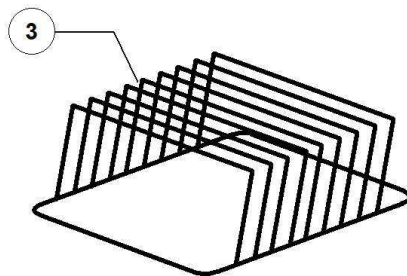
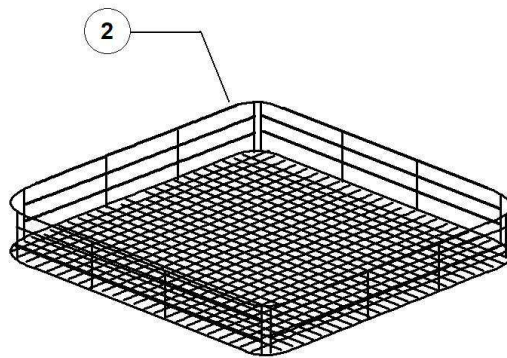
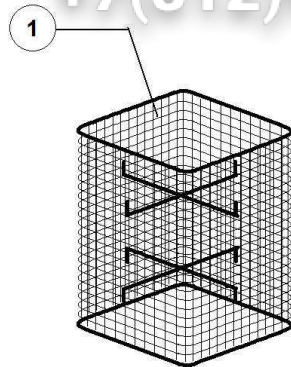
vsezip.ru

+7(812)987-08-81



| Pos. | Codice    | Descrizione                                 | Description                         |
|------|-----------|---|-------------------------------------|
| 1    | DW91102   | GIRANTE LAVAGGIO SUPERIORE/INFERIORE        | UPPER/LOWER WASH ROTOR              |
| 2    | DW13023   | GUARNIZIONE OR 131 (4093)                   | OR 131 (4093) NBR GASKET            |
| 3    | DW3003029 | TAPPO PLASTICA                              | PLASTIC PLUG                        |
| 4    | DW75316   | MOZZO PER GIRANTE                           | HUB FOR ROTOR 11S/96                |
| 5    | DW75317   | DADO PER MOZZO 11S/96                       | NUT FOR ROTOR HUB 11S/96            |
| 6    | DW90008   | TORRETTA INFERIORE/SUPERIORE                | LOWER / UPPER SUPPORT               |
| 7    | DW80208   | GUARNIZIONE RAMPA D.95X75X3 (MIN. 2 PZ)     | RISER GASKET D.95X75X3 (MIN. 2 PCS) |
| 8    | DW90009   | MOZZO PER GIRANTE                           | HUB FOR ROTOR                       |
| 9    | DW90010   | PROLUNGA ASSE RISCIAQUO INFERIORE/SUPERIORE | UPPER/LOWER RINSE AXLE EXTENSION    |
| 10   | DW91103   | GRUPPO RISCIAQUO INFERIORE/SUPERIORE        | UPPER/LOWER RINSE ASSEMBLY          |
| 11   | DW10652   | VITE RISCIAQUO/03                           | RINSE ARM SCREW                     |
| 12   | DW10651   | ASSE RISCIAQUO                              | RINSE AXLE                          |
| 13   | DW10650   | MOZZO PER GIRANTE RISCIAQUO                 | HUB FOR RINSE ROTOR 03              |
| 14   | DW91103/D | BRACCIO RISCIAQUO DESTRO                    | RIGHT RINSE ARM                     |
| 15   | DW91103/S | BRACCIO RISCIAQUO SINISTRO                  | LEFT RINSE ARM                      |
| 16   | DW560018  | UGELLO RISCIAQUO INOX                       | STAINLESS STEEL RINSE NOZZLE        |
| 17   | DW560017  | TAPPO PER TUBO RISCIAQUO                    | RINSE ARM PLUG                      |
| 18   | DW90031   | RONDELLA SCORRIMENTO LP1S/LP1S8             | SLIDING WASHER P1SLP1S8             |
| 19   | DW91110   | ASSIEME TUBI RISCIAQUO D.12                 | RINSE PIPE ASSEMBLY D.12            |

+7(812)987-08-81



# Зип Общепит

vsezip.ru

LP2 S PLUS PS XP DDE PAP 380-400/3N/3G - DW118198 - Cesti - DW118E

| Pos. | Codice  | Descrizione                  | Description            |
|------|---------|------------------------------|------------------------|
| 1    | DWC86/A | CESTELLO PORTA SPATOLE INOX  | S/S SPATULA BASKET     |
| 2    | DW91100 | CESTO INOX 700X700 P2S       | 700X700 S/S BASKET P2S |
| 3    | DWC97/A | INSERTO INOX PER VASSOI 8 PZ | S/S TRAY SUPPORT 8 PCS |

+7(812)987-08-81

Зип Общепит

vsezip.ru

+7(812)987-08-81

