

Зип Общепит

vsezip.ru

+7(812)987-08-81

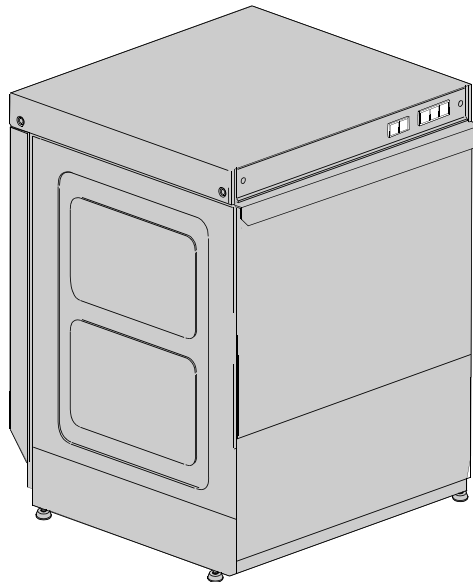
DISHWASHER

ELECTROMECHANICAL SWITCHES
ELECTRONICAL SWITCHES
LOWER AND UPPER WASHING

TYPE: 9R

Accessories
BREAK TANK
BOOSTER PUMP
DVGW
COLD RINSE
WATER SOFTNER
DETERGENT DISPENSER
DRAIN PUMP

Spare Parts Manual



INFORMAZIONI GENERALI

Questo catalogo serve per richiedere con esattezza le parti di ricambio

Nelle ordinazioni indicare:

1) il numero dei codici dei particolari seguito dalla descrizione e la quantità desiderata;

2) Il codice alfa-numerico presente nella seconda colonna della tabella ;

I disegni delle parti di ricambio sono solo indicativi e non rappresentano il pezzo in oggetto.

I dati contenuti in questo catalogo sono indicativi e possono essere soggetti a modifiche senza impegno di preavviso.

ALLGEMEINE INFORMATIONEN

Dieser Ersatzteilkatalog dient zur genauen Angabe der Teile bei Ersatzteilbestellungen.

Bei Ersatzbestellung ist folgendes anzugeben:

1) Die Bestellnummer der Ersatzteile mit der entsprechenden Beschreibung genaue Menge;

2) Der alpha-numerischer Code auf der zweiten Reihe in dein Sculd;

Die Zeichnungen der Ersatzteile sind nur als Hinweise gedacht und stellen nicht das betroffene Teil dar.

Bei den im Katalog angeführten Daten handelt es sich um Anhaltsdaten, die jederzeit, ohne Vorankündigung, geändert werden können.

GENERAL INFORMATION

The present spare parts order exactly the right spare parts

When ordering specify:

1) the part's code number followed by its description and quantity needed;

2) The alpha-numeric code is in the second column in the chart;

Spare parts drawings are general and do not represent the part.

The contents of this catalogue are general and can undergo changes without prior notice.

INFORMACIONES GENERALES

El presente catálogo sirve para pedir con exactitud las partes de repuesto

En los pedidos se debe indicar:

1) el número de código de la parte y a continuación la descripción cantidad deseada;

2) El código alfanumerico presente en la segnada columna de la tabla;

Los diseños de las partes de recambio son solo indicativos y no representan la pieza en cuestión.

Los datos contenidos en el presente catálogo son indicativos y pueden modificarse sin aviso previo.

INFORMATIONS GENERALES

Ce catalogue permet de commander correctement les pièces détachées

Les commandes doivent être passées en indiquant:

1) le numero de code des pièces détachées suivi de leur description quantité désirée;

2) le code alphanumérique dans la deuxième colonne du tableau;

Les plans des pièces détachées sont fournis seulement à titre indicatif et ne représentent pas la pièce concernée.

Les données de ce catalogue sont citées seulement à titre indicatif et peuvent être l'objet de modifications sans avis préalable.

**ESEMPIO
EXAMPLE
EXEMPLE
BEISPIEL**

| Rif. | Codici |
|--------------------|---------|
| MODULE:Particolari | |
| 10505 | 540903 |
| 10510 | 540908 |
| 10515 | 15065/A |
| 10520 | 540086 |
| 10525 | 540028 |



Note

Tutte le informazioni riportate si intendono aggiornate alla data di stampa. Il Produttore si riserva il diritto di apportare qualsiasi modifica richiesta dallo sviluppo evolutivo dei suddetti prodotti.

Per la sicurezza ,la garanzia, l'affidabilità ed il valore della lavastoviglie usa solo ricambi originali. **Per alcuni codici, sono richieste quantità minime d'ordine.**



Attenzione

Questo libretto è parte integrante della lavastoviglie e, in caso di passaggio di proprietà, deve essere consegnato al nuovo acquirente.



Remarque

Toutes les informations contenues dans ce manuel s'entendent mises à jour à la date d'impression. En raison du développement constant de ses produits, usine se réserve le droit d'apporter à tout instant les modifications qu'elle jugera utiles.

Pour la sécurité, la garantie, la fiabilité et la valeur de votre lavevaisselles n'utilisez que des pièces de rechange d'origine. **Pour quelque référence on demande un minimum de pièces par commande**



Attention

Ce manuel doit être considéré comme partie intégrante de la lavevaisselles, en cas de transfert de propriété, doit toujours être remis au nouveau propriétaire.



Note

The information contained herein is valid at the time of going to print. The Company reserves the right to make any changes required by the future development of the above-mentioned products.

For your safety, as well as to preserve the warranty reliability and worth of your dishwashers , use original spare parts only. **For some codes a minimum quantity for order is required.**



Warning

This manual forms an integral part of the dishwashers and - if a transfer of title occurs - must always be handed over to the new owner.



Hinweis


Die Der Hersteller behält sich das Recht vor, jegliche, durch eine Weiterentwicklung der genannten Produkte bedingte Änderungen vornehmen zu können.


Verwenden Sie für Ihre Sicherheit, die Garantie, die Zuverlässigkeit und den Wert Ihrer machine originale Ersatzteile. **Für bestimmte Code nummer werden mindesten bestellungen verlangt.**





Achtung

Diese Betriebsanleitung ist Bestandteile des machine und muss bei seinem Weiterverkauf dem neuen Besitzer ausgehändigt werden.








Code DW 999XYYYY **CL/Part** 

Model DESCRIPTION
S/N DW A 1015770 Type

400V 3N 50HZ 8A
3500W 500W




IPX3 16A 200-500 kPa

Pressione Dinamica alimentazione idrica
 Pression dynamique arrivee d'eau
 Dynamic pressure water supply
 Dynamischer Druck asserreinlauf


Pressione dinamica vapore saturo
 Pression dynamique vapore satuee
 Dyanischer Druck gesattigter Dampf
 Pression Dinamica Vapor Saturado


TECHICAL SPECIFICATION

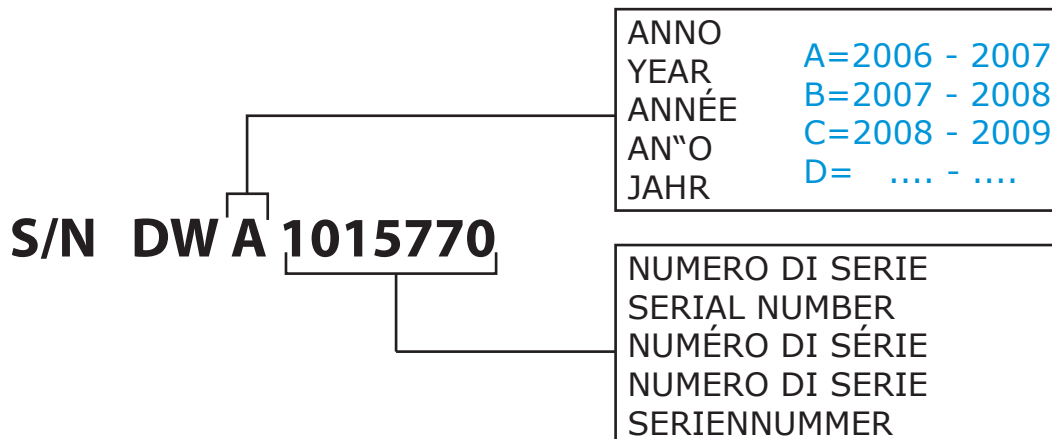
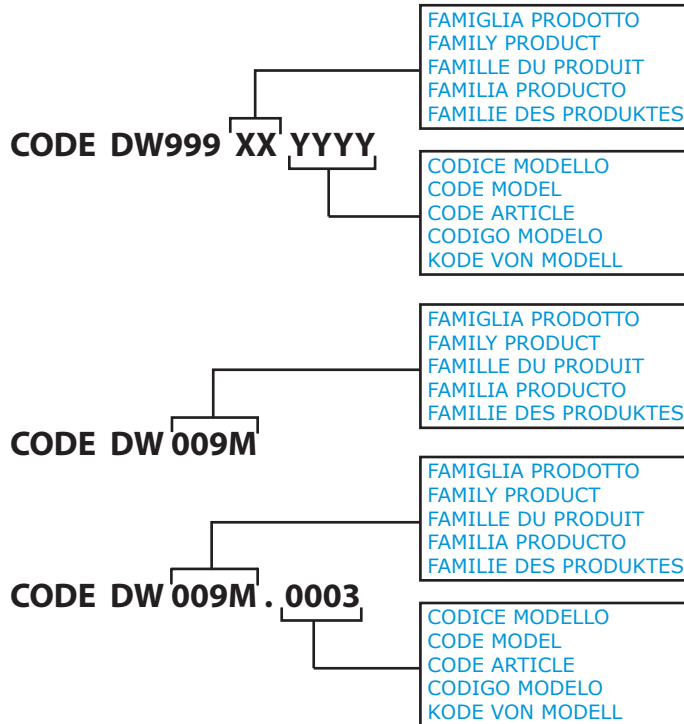


MADE IN ITALY

Temperatura massima acqua in ingresso **60°C**
 Temperature max eau a l'entre
 Maximale Temperatur Wasseranschlù
 Maximum Water temperature in-feeding

Model 

S/N 



Spare parts

Зип Общепит

vsezip.ru

+7(812)987-08-81

vsezip.ru

+7(812)987-08-81

1. Spare parts

| | |
|----------------------------------|----|
| General body parts..... | 7 |
| Lockup system | 11 |
| Control panel and switches..... | 13 |
| Control panel and switches..... | 17 |
| Membrane key-driver | 19 |
| Electric control components..... | 21 |
| Solenoid valve group | 23 |
| Solenoid valve group | 25 |
| Break Tank | 27 |
| DVGW | 29 |
| Water softner group..... | 31 |
| Rinse aid dispenser group..... | 33 |
| Rinse aid dispenser group..... | 35 |
| Boiler group | 37 |
| 3 ways connection | 39 |
| Wash pump | 41 |

Wash pump 43

Dosing detergent group 45

Drain pump group 47

Pressure switch group with air trap ... 49

Turret group with rotating arms 51

Turret group with rotating arms 55

Turret group with rotating arms 57

1.1 Voltage codes

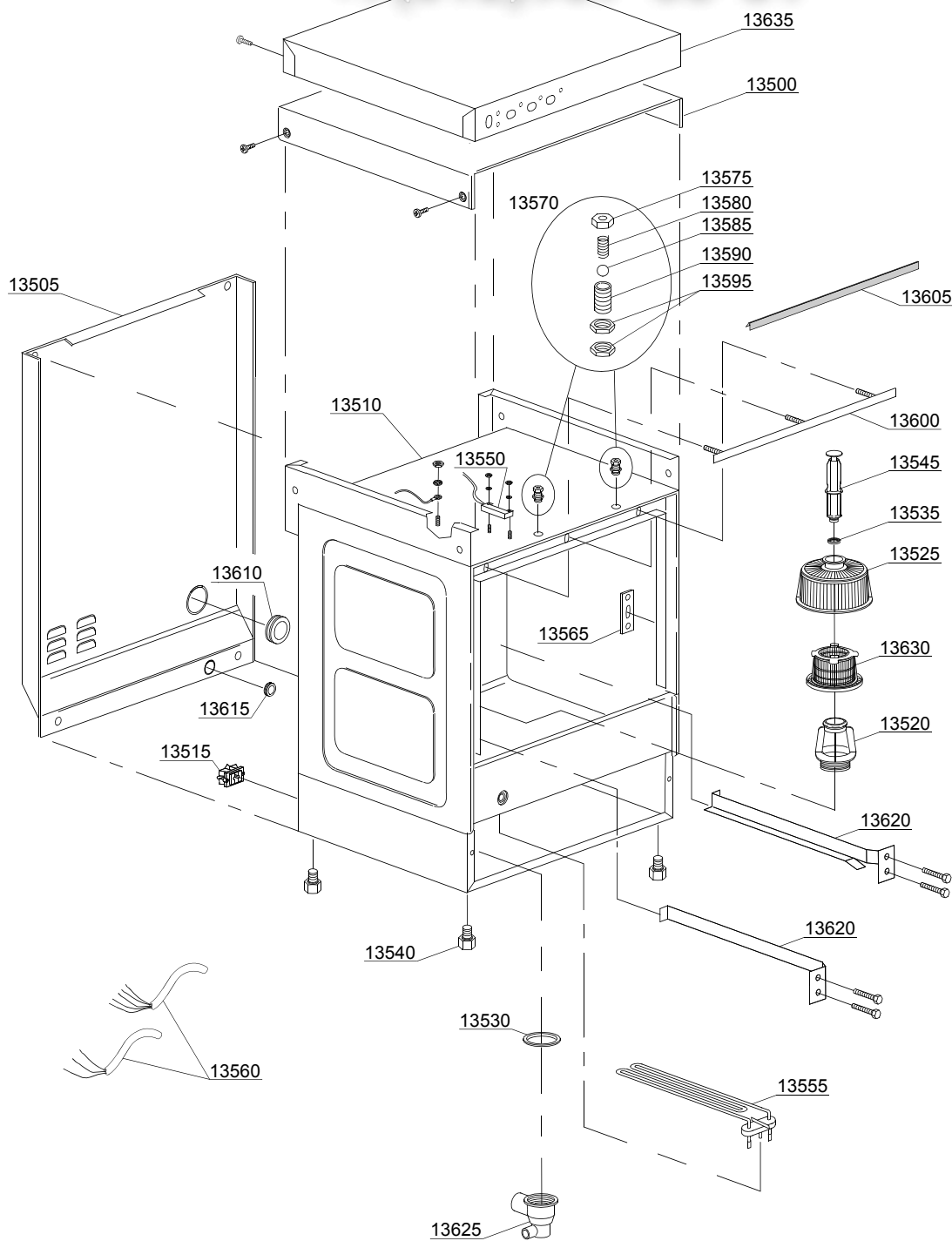
| Volt | Voltage code |
|------|-------------------------|
| A | 3/N/PE~380-400V 50-60Hz |
| D | 3/PE~200-210V 50-60Hz |
| F | 2/PE~220-240V 50-60Hz |
| G | 3/N/PE~415V 50-60Hz |
| H | 3/PE~220-230V 50-60Hz |
| K | 3/PE~380-400V 50-60Hz |
| L | 3/PE~415V 50-60Hz |
| M | 3/PE~440V 60Hz |
| P | 1/N/PE~220-230V 50-60Hz |
| R | 2/PE~220-240V 50-60Hz |
| U | 1/N/PE~240V 50-60Hz |
| V | 3/PE~240V 50-60Hz |
| W | 1/N/PE~100-110V 50-60Hz |

1.2 Product codes

| Product code | Full name |
|-----------------|----------------------------|
| Model codes | |
| em | ELECTROMECHANICAL SWITCHES |
| e | ELECTRONICAL SWITCHES |
| uw | LOWER AND UPPER WASHING |
| Type codes | |
| 9R | 9R |
| Accessory codes | |
| bt | BREAK TANK |
| bp | BOOSTER PUMP |
| dvgw | DVGW |
| cr | COLD RINSE |
| ws | WATER SOFTNER |
| dd | DETERGENT DISPENSER |
| dp | DRAIN PUMP |

vsezip.ru

+7(812)987-08-81



01_015_e

vsezip.ru

| ID | P-code | SN from | SN to | Mod. | Acces. | Volt | Description |
|----------------------------------|----------|---------|-------|------|--------|------|---|
| Module:General body parts | | | | | | | |
| 13500 | 500904 | | - | | | | Cover |
| 13505 | 500909 | | - | | | | Back panel |
| 13510 | 500900 | | - | | | | Body |
| 13510 | 500900/A | | - | | ws | | Body |
| 13515 | 15065/A | | - | | | | Cable-fastener with screw |
| 13520 | 500607 | | - | | | | Ferrule with filter |
| 13525 | 500616 | | - | | | | Suction filter |
| 13530 | 80208 | | - | | | | 95x75x3 O-ring (minimum 2 pieces) |
| 13535 | 13021 | | - | | | | DEM 40 O-ring (minimum 2 pieces) |
| 13540 | 10851 | | - | | | | Foot (minimum 4 pieces) |
| 13545 | 500618 | | - | | | | Overflow pipe |
| 13550 | 10778 | | - | | | | Reed magnet |
| 13555 | 150047 | | - | | | | 2,7/2,94KW 230/240V heating element |
| 13555 | 16035/A | | - | | | | 2,18/2,37KW 230/240V 50Hz heating element |
| 13555 | 15047/E | | - | | | | 2,5/2,72KW 230/240V heating element |
| 13555 | 150047/A | | - | | | | 2,7KW heating element - 440V |
| 13555 | 16035/B | | - | | | | 1,6KW 110V 60Hz heating element |
| 13560 | 15118 | | - | | | | 5x2,5x2500 cable |
| 13560 | 15104/B | | - | | | | 3x4x2500 cable |
| 13560 | 10713 | | - | | | | 3x2,5x2500 cable |
| 13560 | 15145 | | - | | | | 4x4x2500 cable |
| 13565 | 150401 | | - | | | | Door rod slide (minimum 4 pieces) |
| 13570 | 10775 | | - | | | | Door jack assembly |
| 13575 | 10802 | | - | | | | Door jack locknut (minimum 3 pieces) |
| 13580 | 10777 | | - | | | | Spring for door hook |
| 13585 | 10776 | | - | | | | Sphere for door hook |
| 13590 | 10803 | | - | | | | Door jack body |
| 13595 | 10801 | | - | | | | Door jack nut (minimum 5 pieces) |

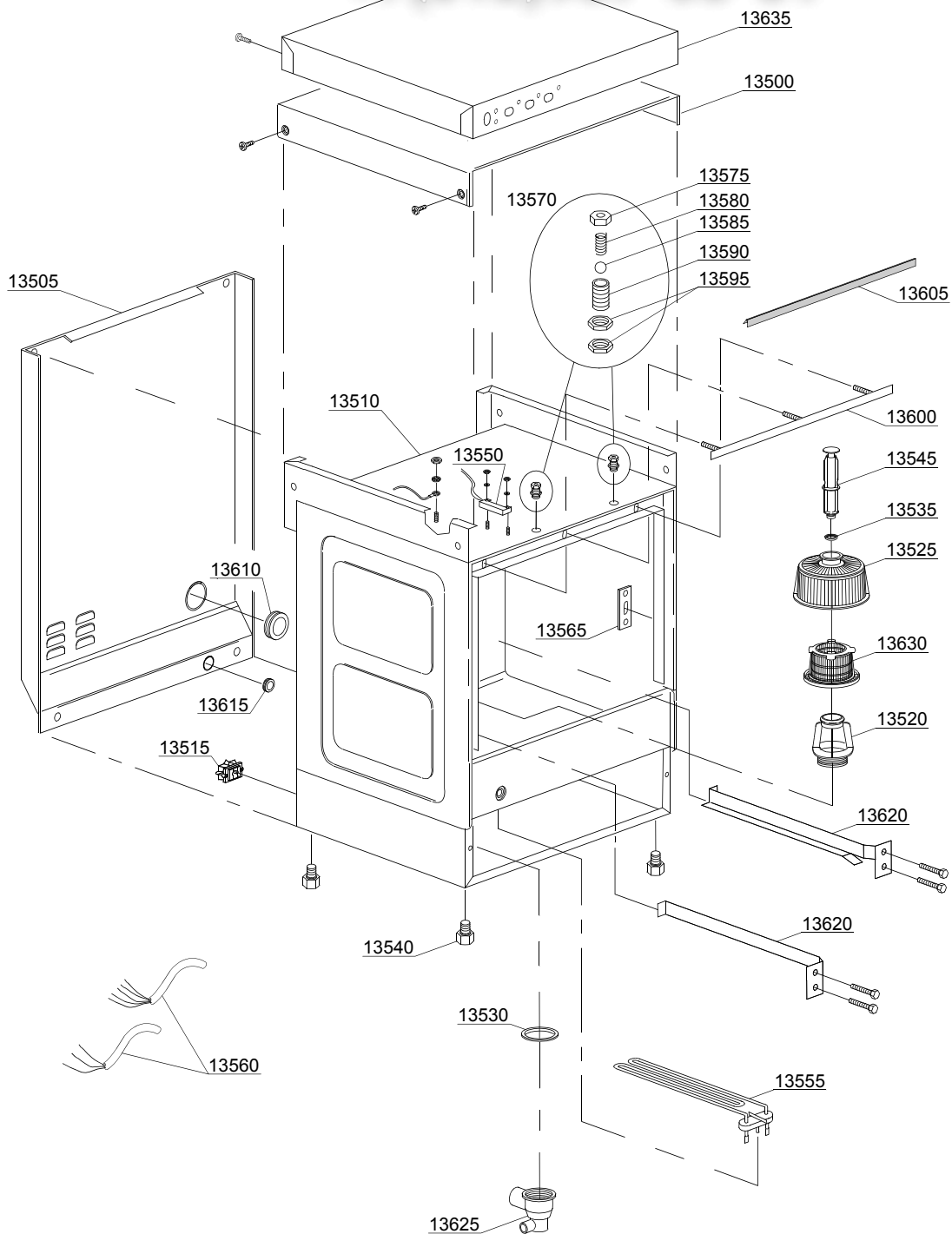
em=ELECTROMECHANICAL SWITCHES, e=ELECTRONICAL SWITCHES, uw=LOWER AND UPPER WASHING
9R=9R

bt=BREAK TANK, bp=BOOSTER PUMP, dvgw=DVGW, cr=COLD RINSE, ws=WATER SOFTNER, dd=DETERGENT
DISPENSER, dp=DRAIN PUMP

A=3/N/PE~380-400V 50-60Hz, D=3/PE~200-210V 50-60Hz, F=2/PE~220-240V 50-60Hz, G=3/N/PE~415V 50-60Hz,
H=3/PE~220-230V 50-60Hz, K=3/PE~380-400V 50-60Hz, L=3/PE~415V 50-60Hz, M=3/PE~440V 60Hz, P=1/N/PE~220-
230V 50-60Hz, R=2/PE~220-240V 50-60Hz, U=1/N/PE~240V 50-60Hz, V=3/PE~240V 50-60Hz, W=1/N/PE~100-110V
50-60Hz

vsezip.ru

+7(812)987-08-81



01_015_e

vsezip.ru

| ID | P-code | SN from | SN to | Mod. | Acces. | Volt | Description |
|----------------------------------|--------|---------|-------|------|--------|------|---|
| Module:General body parts | | | | | | | |
| 13600 | 150921 | | - | | | | Door O-ring angular |
| 13605 | 135205 | | - | | | | Door O-ring |
| 13610 | 13317 | | - | | | | D.40mm unloading pipe pass (minimum 2 pieces) |
| 13615 | 13323 | | - | | | | D.13mm dosing pipe pass (minimum 2 pieces) |
| 13620 | 500902 | | - | | | | Right/left internal slide |
| 13625 | 500606 | | - | | | | Right side scrap tray |
| 13630 | 500600 | | - | | | | Interior filter with rack |
| 13635 | 500140 | | - | | | | Cover with integrated push buttons |

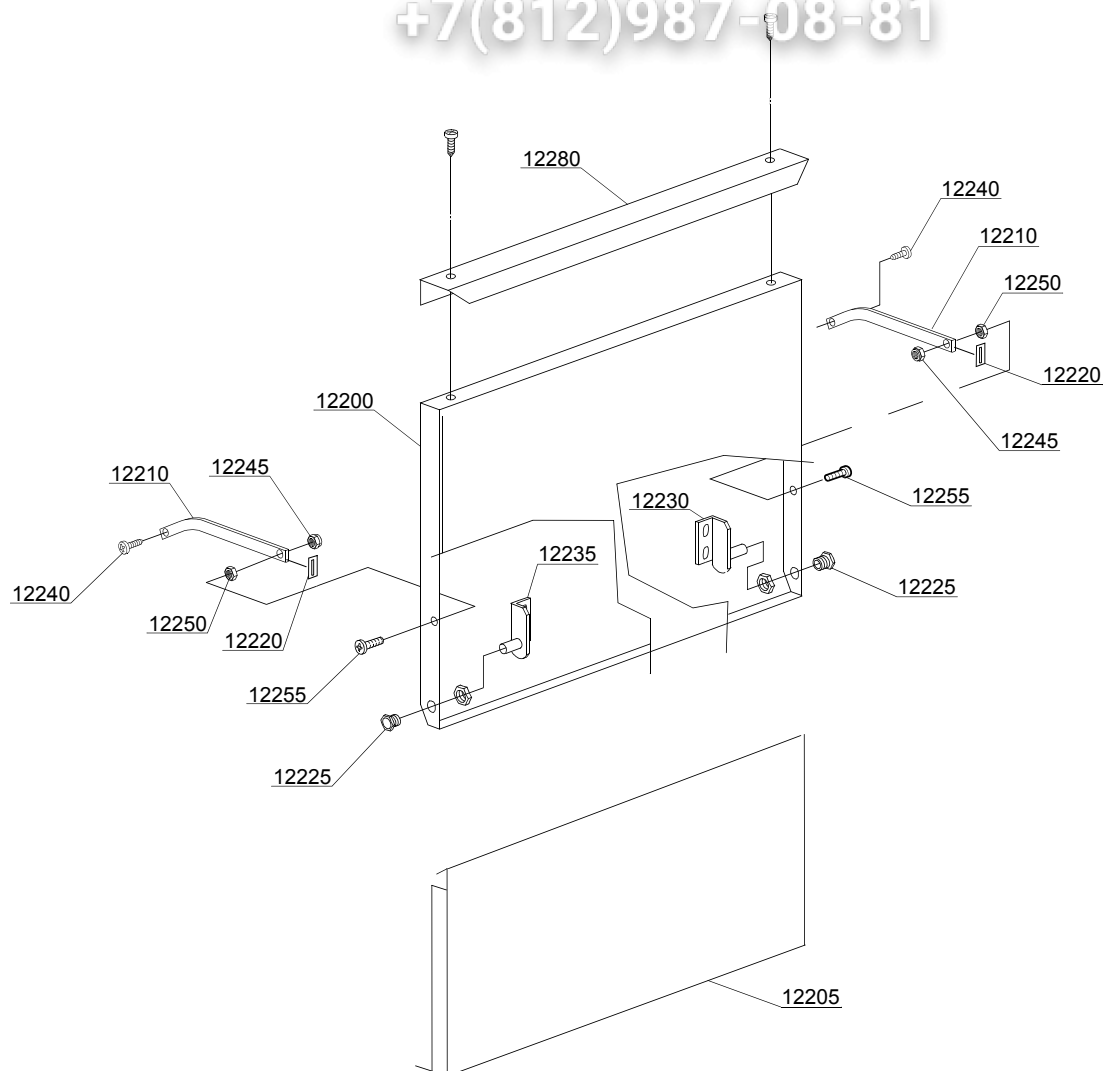
em=ELECTROMECHANICAL SWITCHES, e=ELECTRONICAL SWITCHES, uw=LOWER AND UPPER WASHING
9R=9R

bt=BREAK TANK, bp=BOOSTER PUMP, dvgw=DVGW, cr=COLD RINSE, ws=WATER SOFTNER, dd=DETERGENT
DISPENSER, dp=DRAIN PUMP

A=3/N/PE~380-400V 50-60Hz, D=3/PE~200-210V 50-60Hz, F=2/PE~220-240V 50-60Hz, G=3/N/PE~415V 50-60Hz,
H=3/PE~220-230V 50-60Hz, K=3/PE~380-400V 50-60Hz, L=3/PE~415V 50-60Hz, M=3/PE~440V 60Hz, P=1/N/PE~220-
230V 50-60Hz, R=2/PE~220-240V 50-60Hz, U=1/N/PE~240V 50-60Hz, V=3/PE~240V 50-60Hz, W=1/N/PE~100-110V
50-60Hz

vsezip.ru

+7(812)987-08-81



02_111ae

vsezip.ru

| ID | P-code | SN from | SN to | Mod. | Acces. | Volt | Description |
|------------------------------|---------|---------|-------|------|--------|------|---|
| Module: Lockup system | | | | | | | |
| 12200 | 500943 | | - | | | | Door |
| 12205 | 500903 | | - | | | | Lower door |
| 12210 | 150221 | | - | | | | Right/left door rod |
| 12220 | 135222 | | - | | | | Hinge door seal |
| 12225 | 11835/A | | - | | | | Brass bush for axis |
| 12230 | 150210 | | - | | | | Right hinge door |
| 12235 | 150211 | | - | | | | Left hinge door |
| 12240 | 11121 | | - | | | | M4x8 screw (minimum 20 pieces) |
| 12245 | 11721 | | - | | | | M6 self-locking nut (minimum 10 pieces) |
| 12250 | 11706 | | - | | | | M6 stainless steel nut (minimum 20 pieces) |
| 12255 | 11111 | | - | | | | M6x16 stainless steel screw (minimum 10 pieces) |
| 12280 | 500118 | | - | | | | Inox handle |

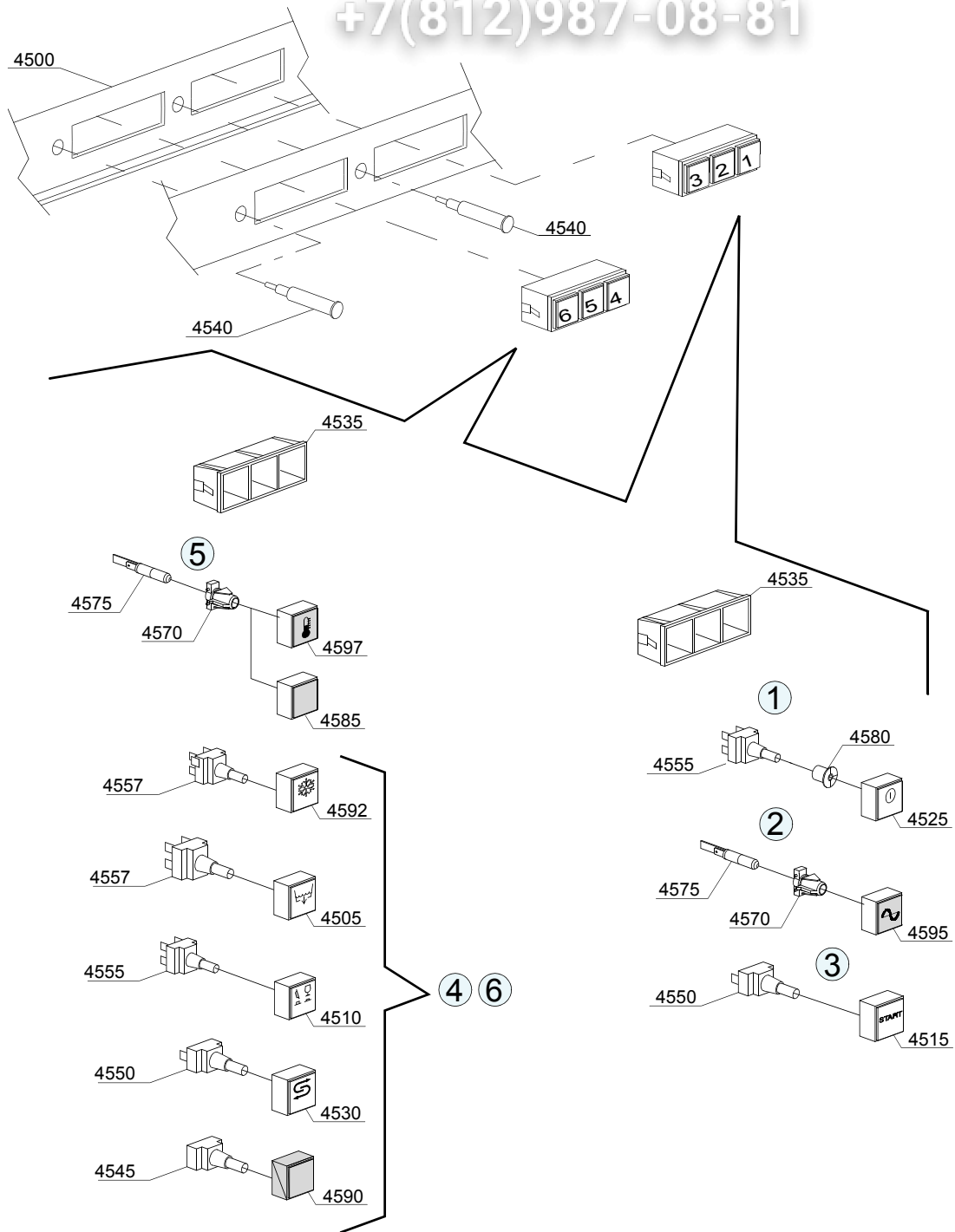
em=ELECTROMECHANICAL SWITCHES, e=ELECTRONICAL SWITCHES, uw=LOWER AND UPPER WASHING
9R=9R

bt=BREAK TANK, bp=BOOSTER PUMP, dvgw=DVGW, cr=COLD RINSE, ws=WATER SOFTNER, dd=DETERGENT
DISPENSER, dp=DRAIN PUMP

A=3/N/PE~380-400V 50-60Hz, D=3/PE~200-210V 50-60Hz, F=2/PE~220-240V 50-60Hz, G=3/N/PE~415V 50-60Hz,
H=3/PE~220-230V 50-60Hz, K=3/PE~380-400V 50-60Hz, L=3/PE~415V 50-60Hz, M=3/PE~440V 60Hz, P=1/N/PE~220-
230V 50-60Hz, R=2/PE~220-240V 50-60Hz, U=1/N/PE~240V 50-60Hz, V=3/PE~240V 50-60Hz, W=1/N/PE~100-110V
50-60Hz

vsezip.ru

+7(812)987-08-81



03_001_e

| ID | P-code | SN from | SN to | Mod. | Acces | Volt | Description |
|--|---------|---------|-------|------|-------|------|---------------------------------|
| Module:Control panel and switches | | | | | | | |
| 4500 | 500410 | | - | em | | | Control panel |
| 4505 | 15854 | | - | em | dp | | Green drain pump push button |
| 4505 | 15990 | | - | em | dp | | Blu drain pump push button |
| 4505 | 15991 | | - | em | dp | | Yellow drain pump push button |
| 4515 | 15873 | | - | em | | | Green start push button |
| 4515 | 15986 | | - | em | | | Blu start push button |
| 4515 | 15987 | | - | em | | | Yellow start push button |
| 4520 | 15847 | | - | em | | | Green push button |
| 4520 | 15817 | | - | em | | | Blu push button |
| 4520 | 15819 | | - | em | | | Yellow push button |
| 4525 | 15874 | | - | em | | | Green ON-OFF push button |
| 4525 | 15988 | | - | em | | | Blu ON-OFF push button |
| 4525 | 15989 | | - | em | | | Yellow ON-OFF push button |
| 4530 | 15871 | | - | em | ws | | Green regeneration push button |
| 4530 | 15993 | | - | em | ws | | Blu regeneration push button |
| 4530 | 15858 | | - | em | ws | | Yellow regeneration push button |
| 4535 | 15843 | | - | em | | | Square black triple support |
| 4535 | 15836 | | - | em | | | Square grey triple support |
| 4540 | 10711/B | | - | em | | | Pilot light |
| 4545 | 15844 | | - | em | | | Push button support |
| 4550 | 15813 | | - | em | | | 16A unipolar switch |
| 4555 | 15812 | | - | em | | | 16A switch |
| 4557 | 15800 | | - | em | | | 16A bipolar switch |
| 4570 | 15827 | | - | em | | | Pilot light support |
| 4575 | 15826 | | - | em | | | Pilot light 220V |
| 4580 | 15824 | | - | em | | | Green-orange cam roll |
| 4585 | 15825 | | - | em | | | Green cover |
| 4590 | 15880 | | - | em | | | Grey plug |

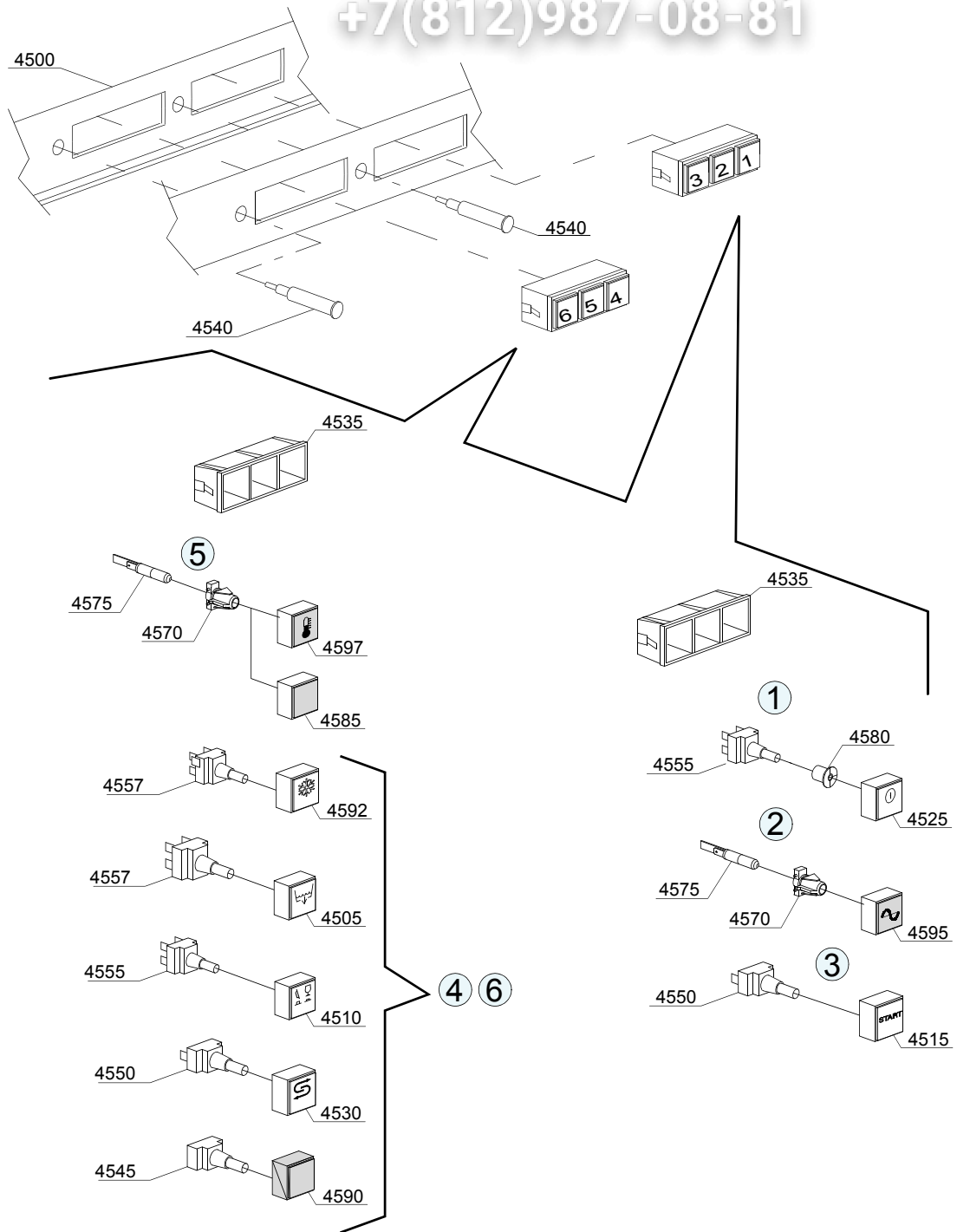
em=ELECTROMECHANICAL SWITCHES, e=ELECTRONICAL SWITCHES, uw=LOWER AND UPPER WASHING 9R=9R

bt=BREAK TANK, bp=BOOSTER PUMP, dvgw=DVGW, cr=COLD RINSE, ws=WATER SOFTNER, dd=DETERGENT DISPENSER, dp=DRAIN PUMP

A=3/N/PE~380-400V 50-60Hz, D=3/PE~200-210V 50-60Hz, F=2/PE~220-240V 50-60Hz, G=3/N/PE~415V 50-60Hz, H=3/PE~220-230V 50-60Hz, K=3/PE~380-400V 50-60Hz, L=3/PE~415V 50-60Hz, M=3/PE~440V 60Hz, P=1/N/PE~220-230V 50-60Hz, R=2/PE~220-240V 50-60Hz, U=1/N/PE~240V 50-60Hz, V=3/PE~240V 50-60Hz, W=1/N/PE~100-110V 50-60Hz

vsezip.ru

+7(812)987-08-81



03_001_e

vsezip.ru

| ID | P-code | SN from | SN to | Mod. | Acces. | Volt | Description |
|--|--------|---------|-------|------|--------|------|--|
| Module:Control panel and switches | | | | | | | |
| 4590 | 15845 | | - | em | | | Black plug |
| 4592 | 15872 | | - | em | | | Green additional cold rinse push button |
| 4592 | 15992 | | - | em | | | Blu additional cold rinse push button |
| 4592 | 15856 | | - | em | | | Yellow additional cold rinse push button |
| 4595 | 15875 | | - | em | | | Green square cycle cover |
| 4597 | 15876 | | - | em | | | Green square temperature cover |

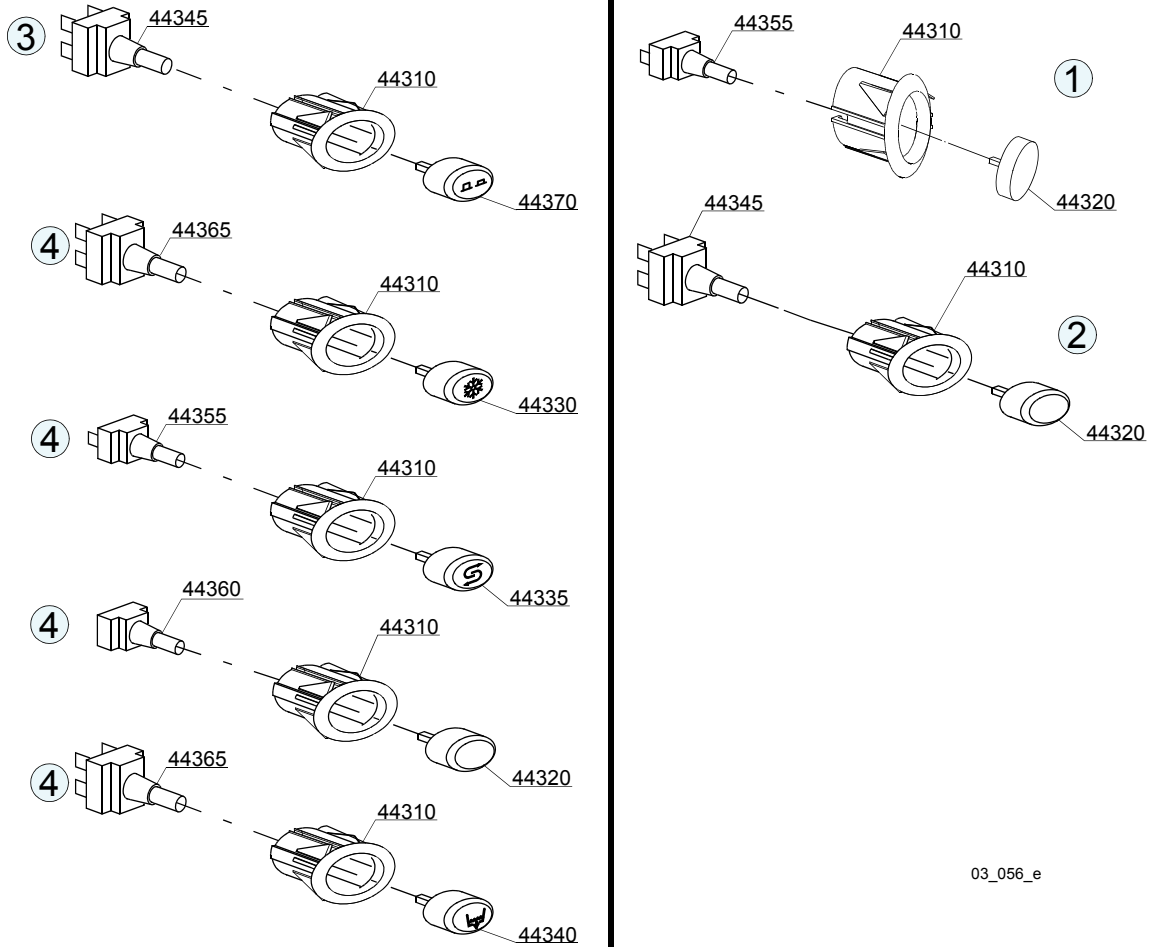
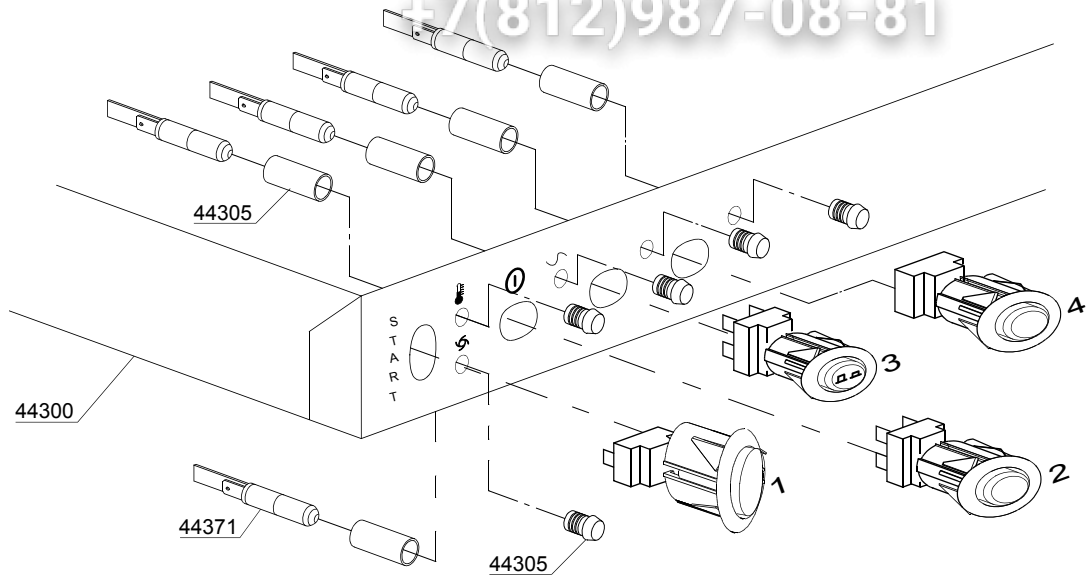
em=ELECTROMECHANICAL SWITCHES, e=ELECTRONICAL SWITCHES, uw=LOWER AND UPPER WASHING
9R=9R

bt=BREAK TANK, bp=BOOSTER PUMP, dvgw=DVGW, cr=COLD RINSE, ws=WATER SOFTNER, dd=DETERGENT
DISPENSER, dp=DRAIN PUMP

A=3/N/PE~380-400V 50-60Hz, D=3/PE~200-210V 50-60Hz, F=2/PE~220-240V 50-60Hz, G=3/N/PE~415V 50-60Hz,
H=3/PE~220-230V 50-60Hz, K=3/PE~380-400V 50-60Hz, L=3/PE~415V 50-60Hz, M=3/PE~440V 60Hz, P=1/N/PE~220-
230V 50-60Hz, R=2/PE~220-240V 50-60Hz, U=1/N/PE~240V 50-60Hz, V=3/PE~240V 50-60Hz, W=1/N/PE~100-110V
50-60Hz

vsezip.ru

+7(812)987-08-81



03_056_e

vsezip.ru

| ID | P-code | SN from | SN to | Mod | Acces. | Volt | Description |
|--|---------|---------|-------|-----|--------|------|-------------------------------------|
| Module:Control panel and switches | | | | | | | |
| 44300 | 500140 | | | em | | | Cover with integrated push buttons |
| 44305 | 15827/A | | - | em | | | Support lamp with small glass |
| 44310 | 84000 | | - | em | | | Push button support |
| 44320 | 84001 | | - | em | | | Blind push button |
| 44330 | 84004 | | - | em | | | Touche chaud/froid (OPTIONAL) |
| 44335 | 84005 | | - | em | ws | | Regeneration push button (OPTIONAL) |
| 44340 | 84003 | | - | em | dp | | Drain pump push button (OPTIONAL) |
| 44345 | 15812 | | - | em | | | 16A bipolar switch |
| 44350 | 15811 | | - | em | | | 16A bipolar switch |
| 44350 | 15811/A | | - | em | | | 16A bipolar switch |
| 44355 | 15813 | | - | em | | | 16A unipolar switch |
| 44360 | 15844 | | - | em | | | Push button support |
| 44365 | 15800 | | - | em | | | 16A bipolar switch |
| 44370 | 84002 | | - | em | | | Time selector switch |
| 44371 | 15826 | | - | em | | | Pilot light 220V |

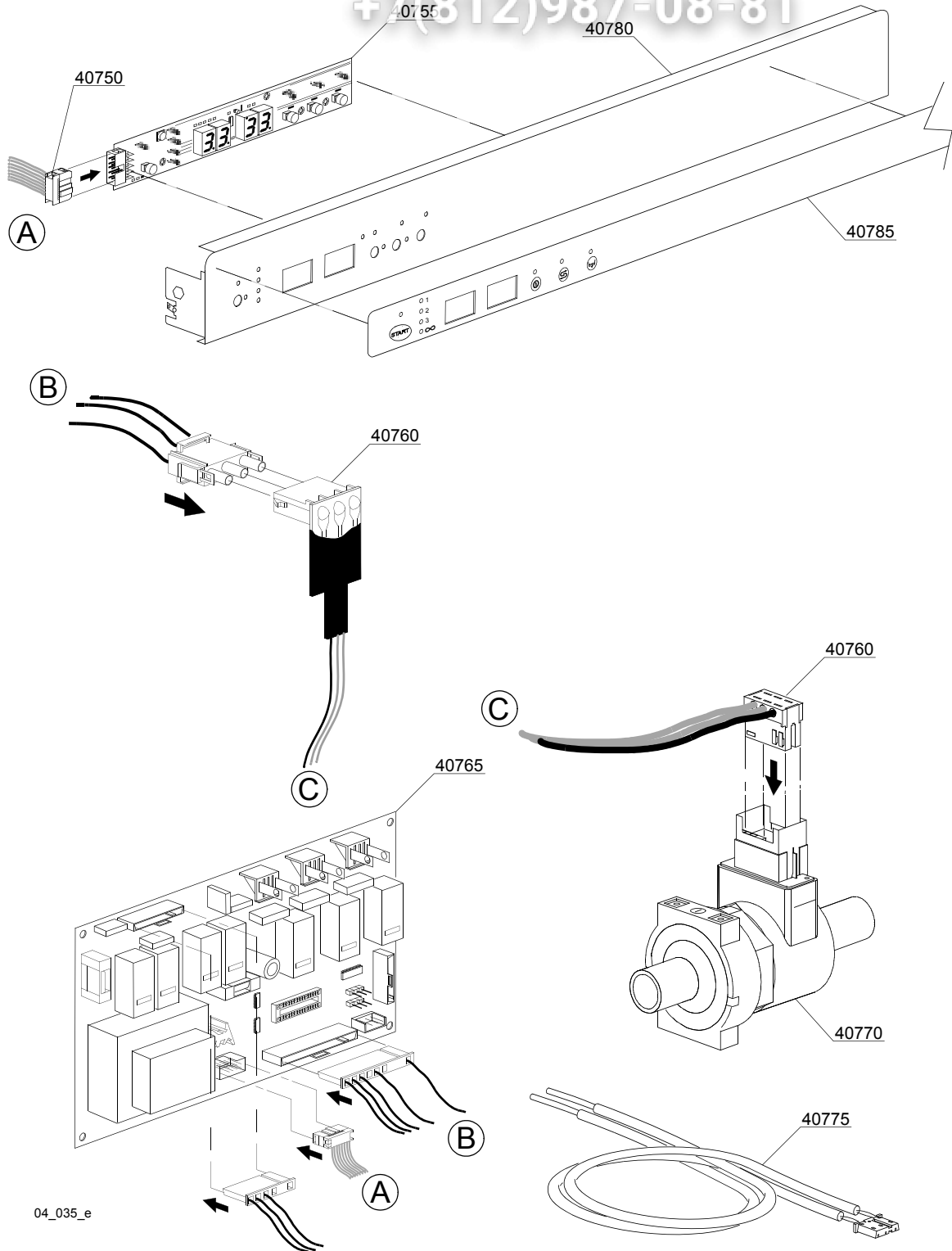
em=ELECTROMECHANICAL SWITCHES, e=ELECTRONICAL SWITCHES, uw=LOWER AND UPPER WASHING
9R=9R

bt=BREAK TANK, bp=BOOSTER PUMP, dvgw=DVGW, cr=COLD RINSE, ws=WATER SOFTNER, dd=DETERGENT
DISPENSER, dp=DRAIN PUMP

A=3/N/PE~380-400V 50-60Hz, D=3/PE~200-210V 50-60Hz, F=2/PE~220-240V 50-60Hz, G=3/N/PE~415V 50-60Hz,
H=3/PE~220-230V 50-60Hz, K=3/PE~380-400V 50-60Hz, L=3/PE~415V 50-60Hz, M=3/PE~440V 60Hz, P=1/N/PE~220-
230V 50-60Hz, R=2/PE~220-240V 50-60Hz, U=1/N/PE~240V 50-60Hz, V=3/PE~240V 50-60Hz, W=1/N/PE~100-110V
50-60Hz

vsezip.ru

+7(812)987-08-81



vsezip.ru

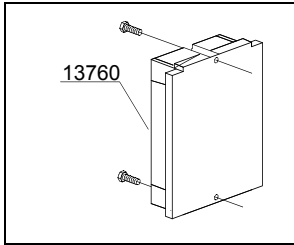
| ID | P-code | SN from | SN to | Mod. | Acces | Volt | Description |
|-----------------------------------|--------|---------|-------|------|-------|------|-----------------------------|
| Module:Membrane key-driver | | | | | | | |
| 40750 | 50589 | | - | e | | | Plug |
| 40755 | 50581 | | - | e | | | Touche sensitive |
| 40760 | 50584 | | - | e | | | Water flow board |
| 40765 | 50580 | | - | e | | | Electronic timer+main board |
| 40770 | 50583 | | - | e | | | Water flow meter for board |
| 40775 | 50562 | | - | e | | | Temperature probe set |
| 40780 | 500139 | | - | e | | | Control Panel |
| 40785 | 500424 | | - | e | | | Silkscreen processed grill |

em=ELECTROMECHANICAL SWITCHES, e=ELECTRONICAL SWITCHES, uw=LOWER AND UPPER WASHING
9R=9R

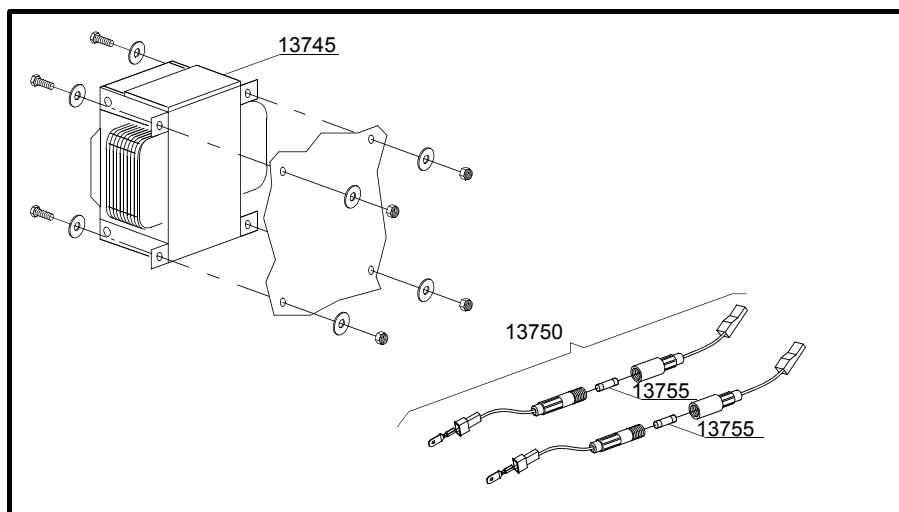
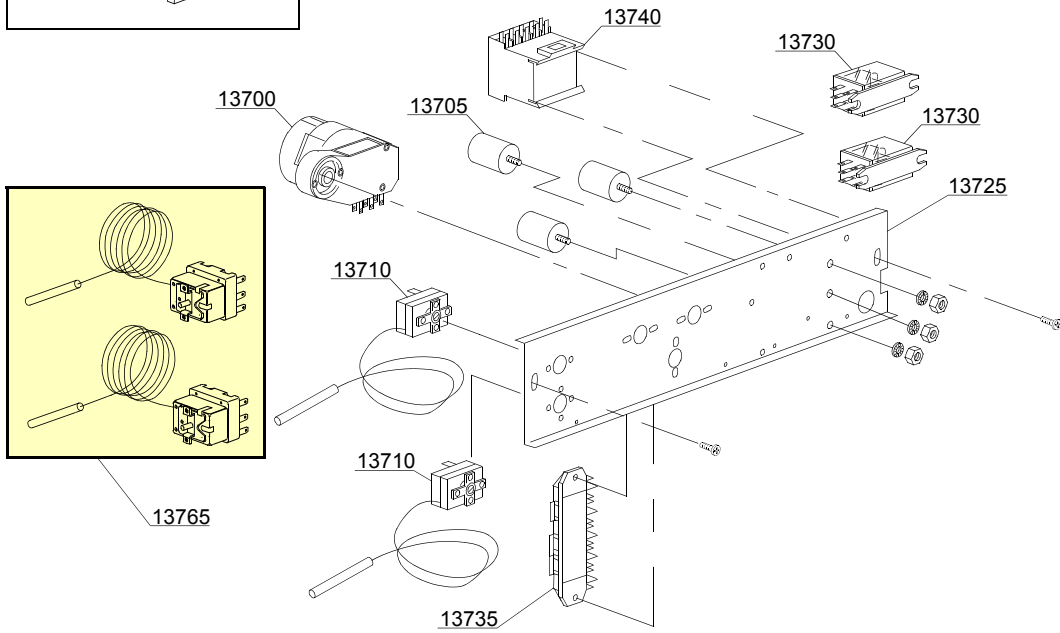
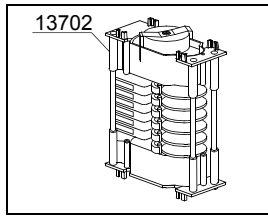
bt=BREAK TANK, bp=BOOSTER PUMP, dvgw=DVGW, cr=COLD RINSE, ws=WATER SOFTNER, dd=DETERGENT
DISPENSER, dp=DRAIN PUMP

A=3/N/PE~380-400V 50-60Hz, D=3/PE~200-210V 50-60Hz, F=2/PE~220-240V 50-60Hz, G=3/N/PE~415V 50-60Hz,
H=3/PE~220-230V 50-60Hz, K=3/PE~380-400V 50-60Hz, L=3/PE~415V 50-60Hz, M=3/PE~440V 60Hz, P=1/N/PE~220-
230V 50-60Hz, R=2/PE~220-240V 50-60Hz, U=1/N/PE~240V 50-60Hz, V=3/PE~240V 50-60Hz, W=1/N/PE~100-110V
50-60Hz

2 TEMPI DEPURAZIONE
2 PROGRAMS REGENERATION



2 TEMPI POMPA SCARICO
2 PROGRAMS DRAIN PUMP



04_013_e

vsezip.ru

| ID | P-code | SN from | SN to | Mod. | Acces. | Volt | Description |
|--|----------|---------|-------|------|--------|------|---|
| Module: Electric control components | | | | | | | |
| 13700 | 10708/L | | - | e,em | | A | 120" timer - 230Vac 50Hz |
| 13700 | 10708/B | | - | e,em | | | 120" timer - 220Vac 60Hz |
| 13700 | 10708/E | | - | e,em | | | 120" timer with thermostop - 110Vac 60Hz |
| 13700 | 10708/T | | - | e,em | | | Timer 120" with thermostop - 230Vac 50Hz |
| 13702 | 30001027 | | - | e,em | | A | 120/180s timer - 230Vac 50Hz |
| 13702 | 30001030 | | - | e,em | | A | 120/180s timer - 230Vac 50Hz with TERMOSTOP |
| 13702 | 30001031 | | - | e,em | dp | A | 120/180" timer with thermostop and drain pump |
| 13705 | 15149 | | - | e,em | | | Low noise filter F3 0,33 mF |
| 13705 | 15187 | | - | e,em | | | Low noise filter F3 440 VaC 3 |
| 13710 | 10707/1 | | - | e,em | | | 0-90°C thermostat |
| 13725 | 500910 | | - | e,em | | | Electric components panel |
| 13730 | 15620 | | - | e,em | dp | | 16A bipolar relay in deviation |
| 13730 | 15620/A | | - | e,em | | | Bipolar relay in deviation - 110Vac 60Hz |
| 13735 | 500550 | | - | e,em | | | 3 poles terminal board |
| 13735 | 500551 | | - | e,em | | | 6 poles terminal board |
| 13740 | 15086 | | - | e,em | | | Contactora 230V 50/60Hz 4C |
| 13740 | 10300055 | | - | e,em | | | 25A 110Vac 50/60Hz contactora |
| 13760 | 50553 | | - | e,em | ws | | 3 times electronic timer with regeneration |
| 13765 | 15553 | | - | e,em | | | Security Thermostat (EGO) 110°C 3 poles |

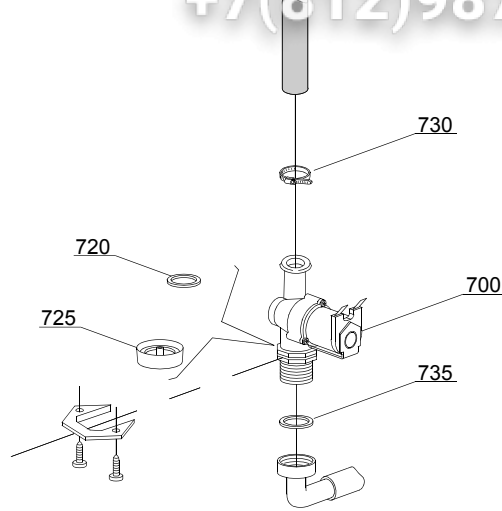
em=ELECTROMECHANICAL SWITCHES, e=ELECTRONICAL SWITCHES, uw=LOWER AND UPPER WASHING
9R=9R

bt=BREAK TANK, bp=BOOSTER PUMP, dvgw=DVGW, cr=COLD RINSE, ws=WATER SOFTNER, dd=DETERGENT
DISPENSER, dp=DRAIN PUMP

A=3/N/PE~380-400V 50-60Hz, D=3/PE~200-210V 50-60Hz, F=2/PE~220-240V 50-60Hz, G=3/N/PE~415V 50-60Hz,
H=3/PE~220-230V 50-60Hz, K=3/PE~380-400V 50-60Hz, L=3/PE~415V 50-60Hz, M=3/PE~440V 60Hz, P=1/N/PE~220-
230V 50-60Hz, R=2/PE~220-240V 50-60Hz, U=1/N/PE~240V 50-60Hz, V=3/PE~240V 50-60Hz, W=1/N/PE~100-110V
50-60Hz

vsezip.ru

+7(812)987-08-81



05_002_e

vsezip.ru

| ID | P-code | SN from | SN to | Mod | Acces. | Volt | Description |
|------------------------------------|---------|---------|-------|------|--------|------|--------------------------------|
| Module:Solenoid valve group | | | | | | | |
| 700 | 10703 | | - | em,e | | | Single solenoid valve - 230Vac |
| 700 | 10703/A | | - | em,e | | | Single solenoid valve - 110Vac |
| 720 | N.C. | | - | em,e | | | Pression reducing valve |
| 730 | 11807 | | - | em,e | | | 12/22 clamp (minimum 3 pieces) |
| 735 | 13307 | | - | em,e | | | 3/4 gasket |

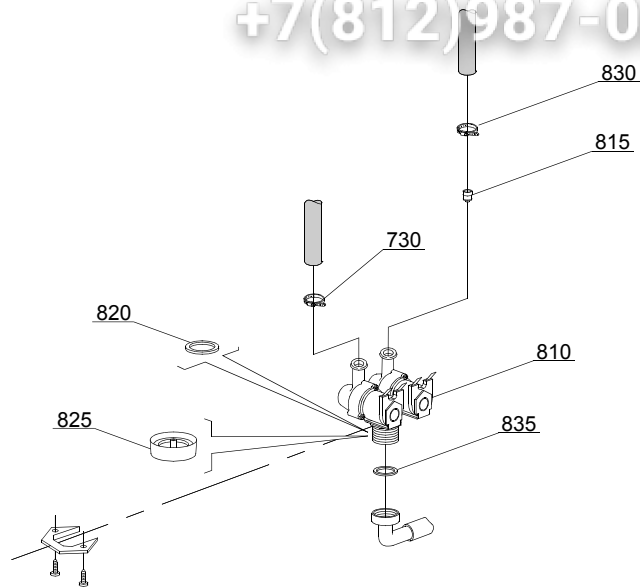
em=ELECTROMECHANICAL SWITCHES, e=ELECTRONICAL SWITCHES, uw=LOWER AND UPPER WASHING
9R=9R

bt=BREAK TANK, bp=BOOSTER PUMP, dvgw=DVGW, cr=COLD RINSE, ws=WATER SOFTNER, dd=DETERGENT
DISPENSER, dp=DRAIN PUMP

A=3/N/PE~380-400V 50-60Hz, D=3/PE~200-210V 50-60Hz, F=2/PE~220-240V 50-60Hz, G=3/N/PE~415V 50-60Hz,
H=3/PE~220-230V 50-60Hz, K=3/PE~380-400V 50-60Hz, L=3/PE~415V 50-60Hz, M=3/PE~440V 60Hz, P=1/N/PE~220-
230V 50-60Hz, R=2/PE~220-240V 50-60Hz, U=1/N/PE~240V 50-60Hz, V=3/PE~240V 50-60Hz, W=1/N/PE~100-110V
50-60Hz

vsezip.ru

+7(812)987-08-81



05_003_ε

vsezip.ru

| ID | P-code | SN from | SN to | Mod. | Acces | Volt | Description |
|------------------------------------|--------|---------|-------|------|-------|------|---|
| Module:Solenoid valve group | | | | | | | |
| 810 | 15098 | | - | em,e | cr,ws | | Double solenoid valve - Ø10 - 230Vac |
| 815 | 15115 | | - | e,em | cr,ws | | Green pression solenoid valve for regeneration (minimum 2 pieces) |
| 820 | N.C. | | - | e,em | cr,ws | | Pression reducing valve |
| 830 | 11807 | | - | em,e | | | 12/22 clamp (minimum 3 pieces) |
| 835 | 13307 | | - | em,e | | | 3/4 gasket |

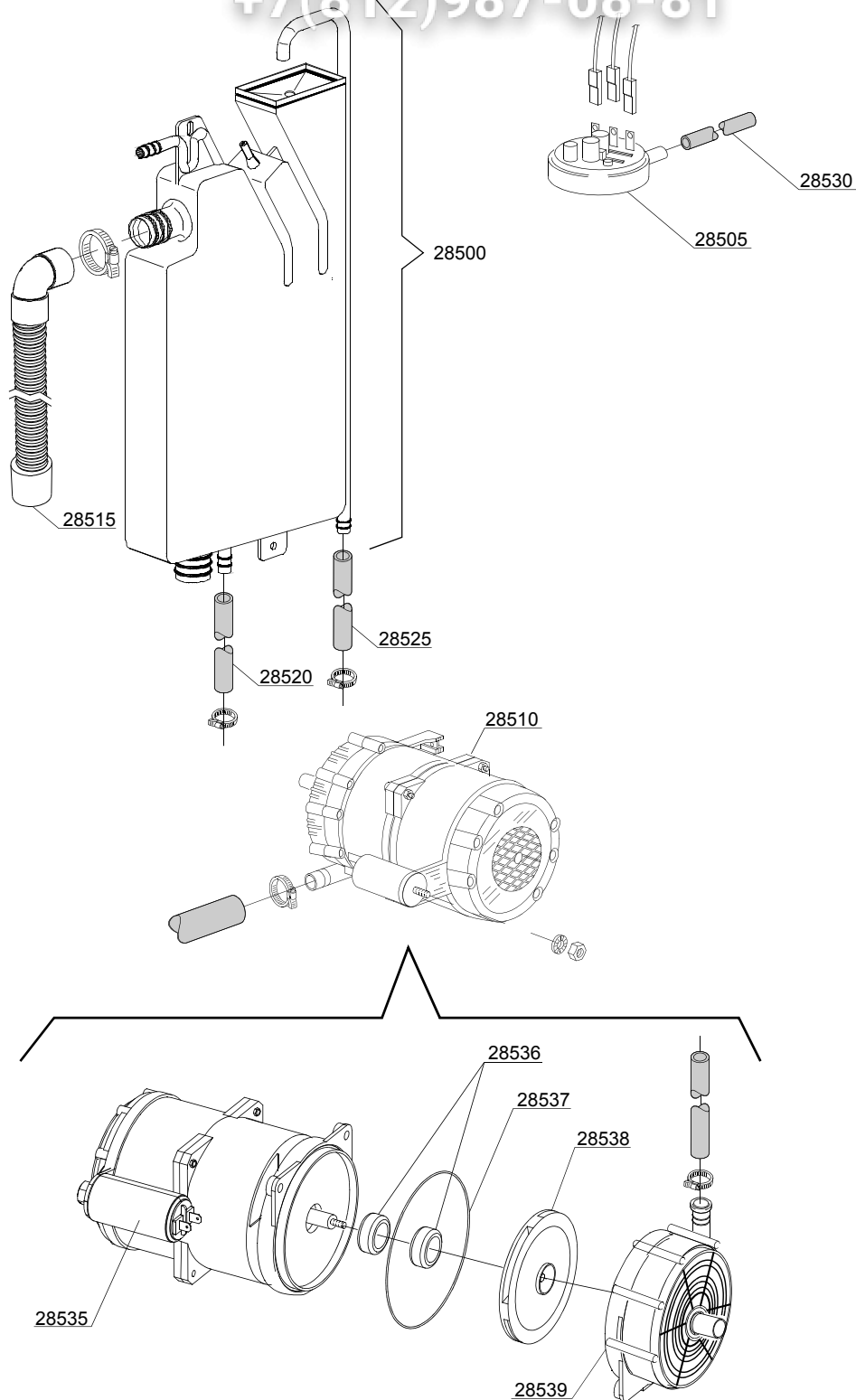
em=ELECTROMECHANICAL SWITCHES, e=ELECTRONICAL SWITCHES, uw=LOWER AND UPPER WASHING
9R=9R

bt=BREAK TANK, bp=BOOSTER PUMP, dvgw=DVGW, cr=COLD RINSE, ws=WATER SOFTNER, dd=DETERGENT
DISPENSER, dp=DRAIN PUMP

A=3/N/PE~380-400V 50-60Hz, D=3/PE~200-210V 50-60Hz, F=2/PE~220-240V 50-60Hz, G=3/N/PE~415V 50-60Hz,
H=3/PE~220-230V 50-60Hz, K=3/PE~380-400V 50-60Hz, L=3/PE~415V 50-60Hz, M=3/PE~440V 60Hz, P=1/N/PE~220-
230V 50-60Hz, R=2/PE~220-240V 50-60Hz, U=1/N/PE~240V 50-60Hz, V=3/PE~240V 50-60Hz, W=1/N/PE~100-110V
50-60Hz

vsezip.ru

+7(812)987-08-81



06_004ae

vsezip.ru

| ID | P-code | SN from | SN to | Mod. | Acces. | Volt | Description |
|--------------------------|---------|---------|-------|------|--------|------|---|
| Module:Break Tank | | | | | | | |
| 28500 | 15735 | | - | e,em | bt | | Break tank assembly |
| 28505 | 10706/A | | - | e,em | bt | | 47-27 pressure switch |
| 28510 | 15100/D | | - | e,em | bt | | Booster pump 220/240V - body pumps in plastic |
| 28515 | 15721 | | - | e,em | bt | | BT long pipe L=1070 |
| 28515 | 15722 | | - | e,em | bt | | BT middle pipe L=920 |
| 28515 | 15723 | | - | e,em | bt | | BT small pipe L=690 |
| 28520 | 2907350 | | - | e,em | bt | | 12x20 EPDM rubber hose |
| 28525 | 2907352 | | - | e,em | bt | | PVC WRAS rubber hose |
| 28530 | 14508 | | - | e,em | bt | | 4,5x9 EPDM rubber hose (minimum 2 mt) |
| 28535 | 10702 | | - | e,em | bt | | 5 uF condenser - 450V |
| 28536 | 15100/S | | - | e,em | bt | | Rotating seals |
| 28537 | 15100/T | | - | e,em | bt | | OR-(O-ring) gasket EPDM |
| 28538 | 15100/U | | - | e,em | bt | | Pump rotor |
| 28539 | 15100/V | | - | e,em | bt | | Scroll |

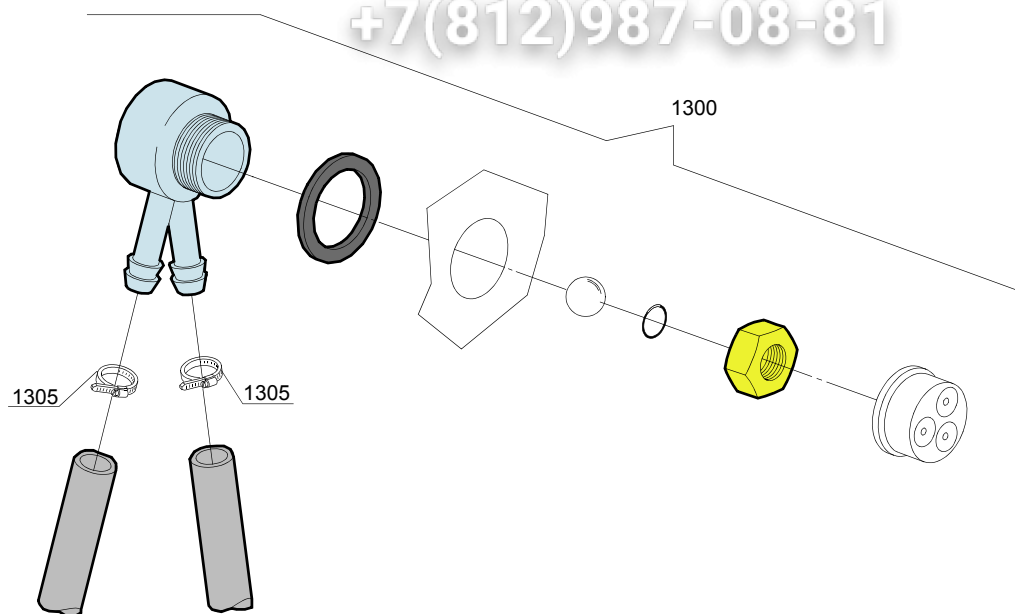
em=ELECTROMECHANICAL SWITCHES, e=ELECTRONICAL SWITCHES, uw=LOWER AND UPPER WASHING
9R=9R

bt=BREAK TANK, bp=BOOSTER PUMP, dvgw=DVGW, cr=COLD RINSE, ws=WATER SOFTNER, dd=DETERGENT
DISPENSER, dp=DRAIN PUMP

A=3/N/PE~380-400V 50-60Hz, D=3/PE~200-210V 50-60Hz, F=2/PE~220-240V 50-60Hz, G=3/N/PE~415V 50-60Hz,
H=3/PE~220-230V 50-60Hz, K=3/PE~380-400V 50-60Hz, L=3/PE~415V 50-60Hz, M=3/PE~440V 60Hz, P=1/N/PE~220-
230V 50-60Hz, R=2/PE~220-240V 50-60Hz, U=1/N/PE~240V 50-60Hz, V=3/PE~240V 50-60Hz, W=1/N/PE~100-110V
50-60Hz

vsezip.ru

+7(812)987-08-81



08_005_e

vsezip.ru

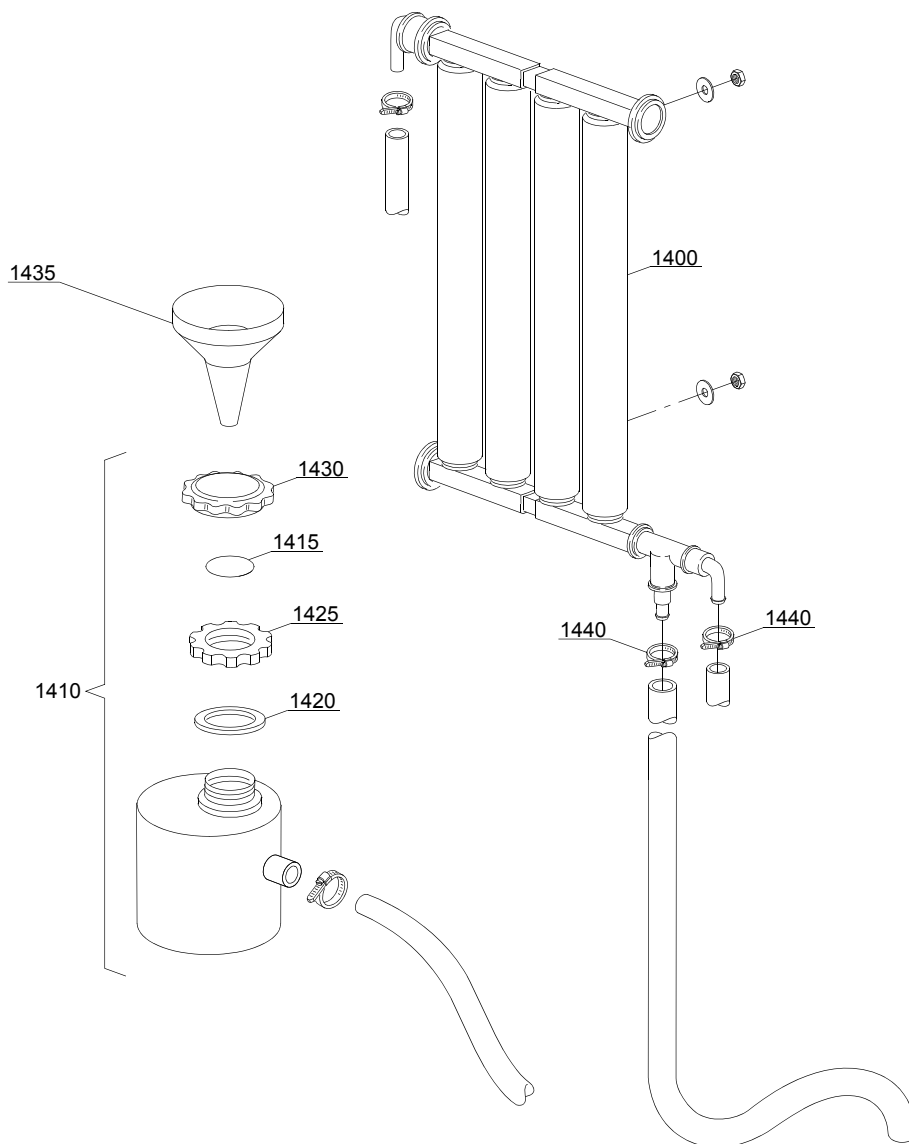
| ID | P-code | SN from | SN to | Mod. | Acces | Volt | Description |
|--------------------|-----------|---------|-------|------|-------|------|--------------------------------|
| Module:DVGW | | | | | | | |
| 1300 | 999900006 | | - | e,em | dvgw | | DVGW assembly |
| 1305 | 11807 | | - | e,em | dvgw | | 12/22 clamp (minimum 3 pieces) |

em=ELECTROMECHANICAL SWITCHES, e=ELECTRONICAL SWITCHES, uw=LOWER AND UPPER WASHING
9R=9R

bt=BREAK TANK, bp=BOOSTER PUMP, dvgw=DVGW, cr=COLD RINSE, ws=WATER SOFTNER, dd=DETERGENT
DISPENSER, dp=DRAIN PUMP

A=3/N/PE~380-400V 50-60Hz, D=3/PE~200-210V 50-60Hz, F=2/PE~220-240V 50-60Hz, G=3/N/PE~415V 50-60Hz,
H=3/PE~220-230V 50-60Hz, K=3/PE~380-400V 50-60Hz, L=3/PE~415V 50-60Hz, M=3/PE~440V 60Hz, P=1/N/PE~220-
230V 50-60Hz, R=2/PE~220-240V 50-60Hz, U=1/N/PE~240V 50-60Hz, V=3/PE~240V 50-60Hz, W=1/N/PE~100-110V
50-60Hz

09_001_e



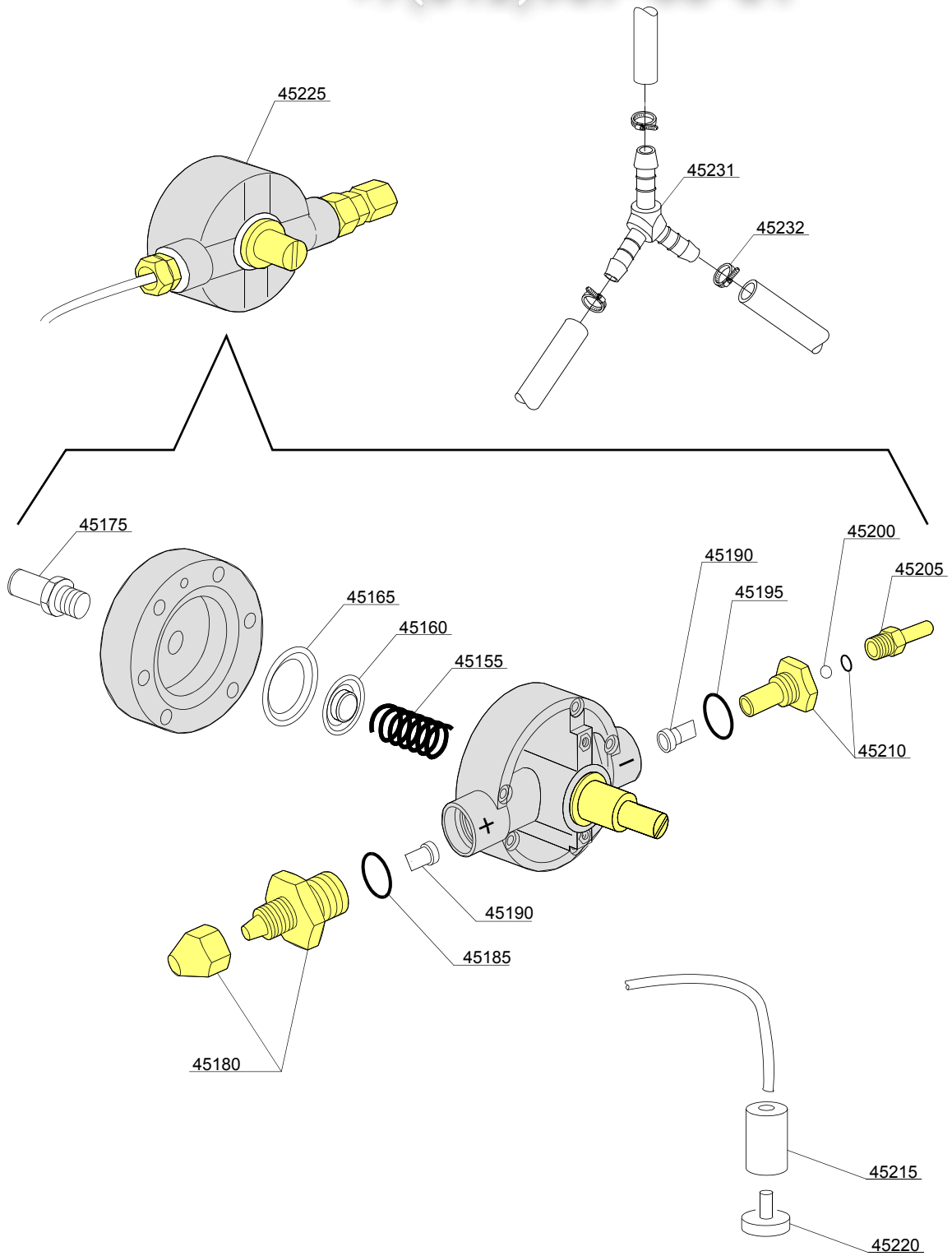
vsezip.ru

| ID | P-code | SN from | SN to | Mod. | Acces. | Volt | Description |
|------------------------------------|---------|---------|-------|------|--------|------|--------------------------------|
| Module: Water softner group | | | | | | | |
| 1400 | 16066 | | - | e,em | ws | | 4 elements water softner |
| 1410 | 16065 | | - | e,em | ws | | Salt container |
| 1415 | 16067/A | | - | e,em | ws | | OR O-ring |
| 1420 | 16067/B | | - | e,em | ws | | O-ring |
| 1425 | 16067/C | | - | e,em | ws | | Ring nut |
| 1430 | 16067/D | | - | e,em | ws | | Plug |
| 1435 | 16082 | | - | e,em | ws | | Funnel |
| 1440 | 11807 | | - | e,em | ws | | 12/22 clamp (minimum 3 pieces) |

em=ELECTROMECHANICAL SWITCHES, e=ELECTRONICAL SWITCHES, uw=LOWER AND UPPER WASHING
9R=9R

bt=BREAK TANK, bp=BOOSTER PUMP, dvgw=DVGW, cr=COLD RINSE, ws=WATER SOFTNER, dd=DETERGENT
DISPENSER, dp=DRAIN PUMP

A=3/N/PE~380-400V 50-60Hz, D=3/PE~200-210V 50-60Hz, F=2/PE~220-240V 50-60Hz, G=3/N/PE~415V 50-60Hz,
H=3/PE~220-230V 50-60Hz, K=3/PE~380-400V 50-60Hz, L=3/PE~415V 50-60Hz, M=3/PE~440V 60Hz, P=1/N/PE~220-
230V 50-60Hz, R=2/PE~220-240V 50-60Hz, U=1/N/PE~240V 50-60Hz, V=3/PE~240V 50-60Hz, W=1/N/PE~100-110V
50-60Hz



| ID | P-code | SN from | SN to | Mod. | Acces. | Volt | Description |
|--|---------|---------|-------|------|--------|------|----------------------------------|
| Module: Rinse aid dispenser group | | | | | | | |
| 45155 | 10705/M | | - | e,em | | | Spring |
| 45160 | 10705/N | | - | e,em | | | Disc to membrane |
| 45165 | 10750/O | | - | e,em | | | Membrane |
| 45175 | 12506 | | - | e,em | | | Rubber-holder Ø 10mm |
| 45180 | 10705/G | | - | e,em | | | Pipe fitting |
| 45185 | 10705/C | | - | e,em | | | OR-gasket |
| 45190 | 10705/D | | - | e,em | | | Silicone valve |
| 45195 | 10705/C | | - | e,em | | | OR-gasket |
| 45200 | 10705/T | | - | e,em | | | Sphere made of Teflon |
| 45205 | 10705/R | | - | e,em | | | Brass pipe fitting |
| 45210 | 10705/E | | - | e,em | | | OR-gasket Guide valve |
| 45215 | 12525 | | - | e,em | | | Ballast |
| 45220 | 15058 | | - | e,em | | | Small filter (minimum 3 pieces) |
| 45225 | 10799/G | | - | e,em | | | GERMAC rinse aid dispenser |
| 45231 | 540091 | | - | e,em | | | Ø12 mm plastic 3 ways connection |
| 45232 | 11807 | | - | e,em | | | Clamp 12-22 (minimum 3 pieces) |

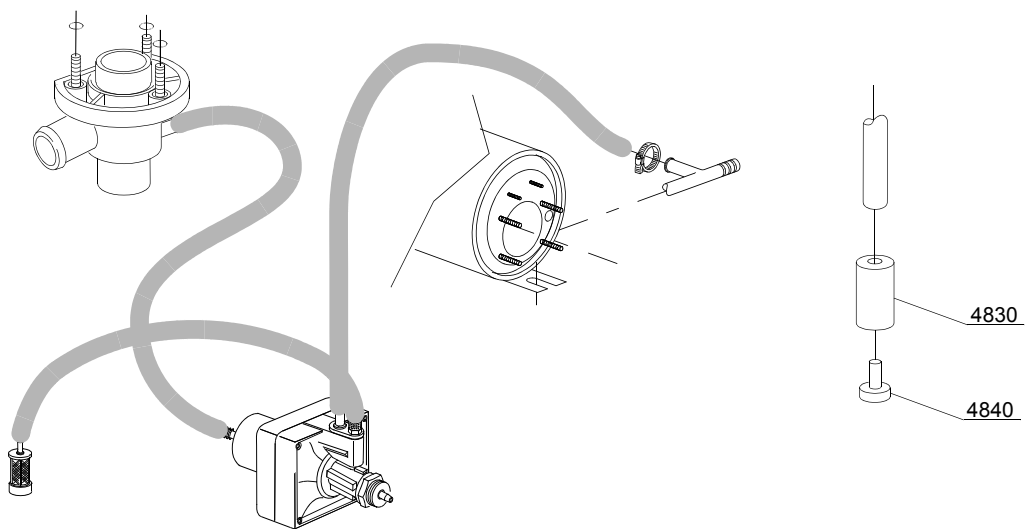
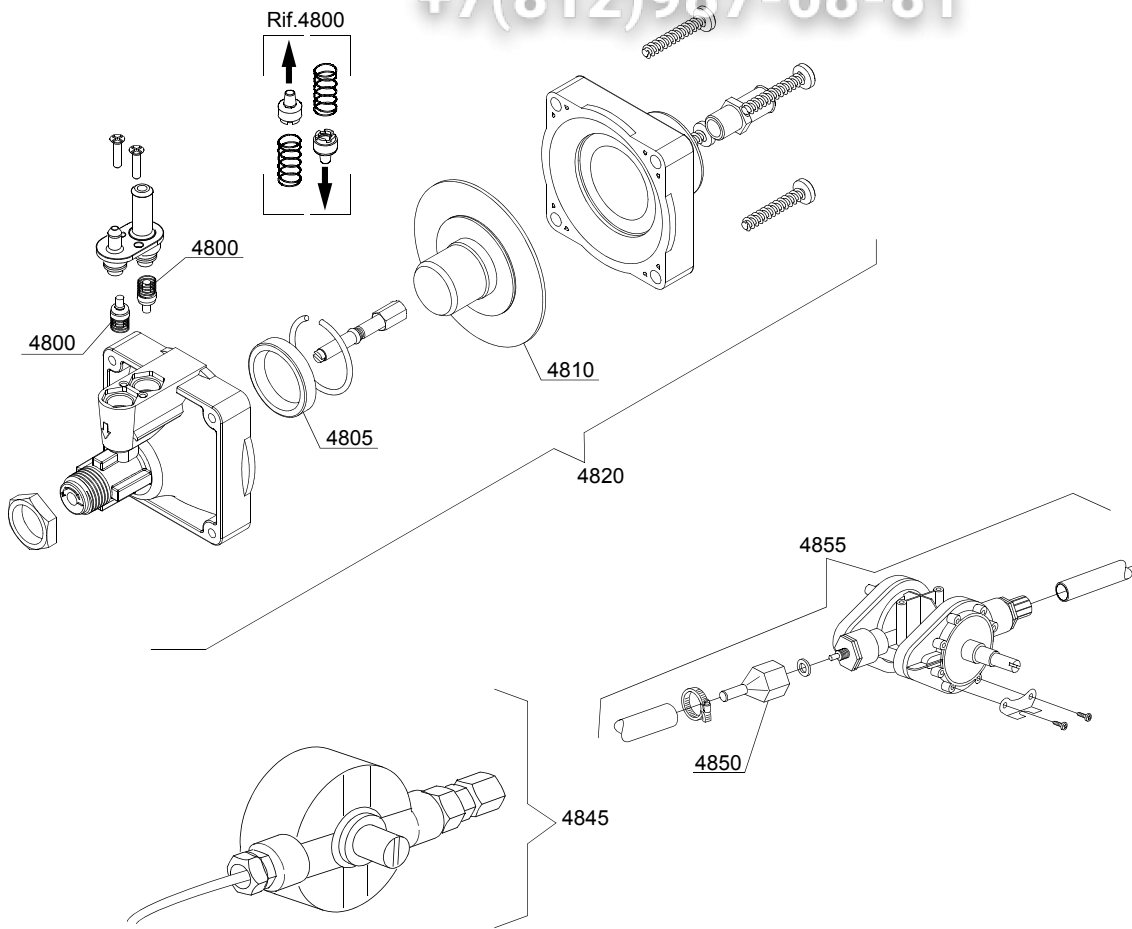
em=ELECTROMECHANICAL SWITCHES, e=ELECTRONICAL SWITCHES, uw=LOWER AND UPPER WASHING
9R=9R

bt=BREAK TANK, bp=BOOSTER PUMP, dvgw=DVGW, cr=COLD RINSE, ws=WATER SOFTNER, dd=DETERGENT
DISPENSER, dp=DRAIN PUMP

A=3/N/PE~380-400V 50-60Hz, D=3/PE~200-210V 50-60Hz, F=2/PE~220-240V 50-60Hz, G=3/N/PE~415V 50-60Hz,
H=3/PE~220-230V 50-60Hz, K=3/PE~380-400V 50-60Hz, L=3/PE~415V 50-60Hz, M=3/PE~440V 60Hz, P=1/N/PE~220-
230V 50-60Hz, R=2/PE~220-240V 50-60Hz, U=1/N/PE~240V 50-60Hz, V=3/PE~240V 50-60Hz, W=1/N/PE~100-110V
50-60Hz

vsezip.ru

+7(812)987-08-81



10_004_e

vsezip.ru

| ID | P-code | SN from | SN to | Mod. | Acces. | Volt | Description |
|--|---------|---------|-------|------|--------|------|---------------------------------|
| Module: Rinse aid dispenser group | | | | | | | |
| 4800 | 10805 | | - | e,em | | | Tecnopro non return valve |
| 4805 | 10806 | | - | e,em | | | Ø22 O-ring |
| 4810 | 10807 | | - | e,em | | | Membrane |
| 4820 | 10799 | | - | e,em | | | TECNO PRO rinse aid dispenser |
| 4830 | 12525 | | - | e,em | | | Ballast |
| 4840 | 15058 | | - | e,em | | | Small filter (minimum 3 pieces) |
| 4845 | 10799 | | - | e,em | | | GERMAC rinse aid dispenser |
| 4850 | 10798/B | | - | e,em | | | Brass pipe fitting |
| 4855 | 10798 | | - | e,em | | | LANG rinse aid dispenser |

em=ELECTROMECHANICAL SWITCHES, e=ELECTRONICAL SWITCHES, uw=LOWER AND UPPER WASHING
9R=9R

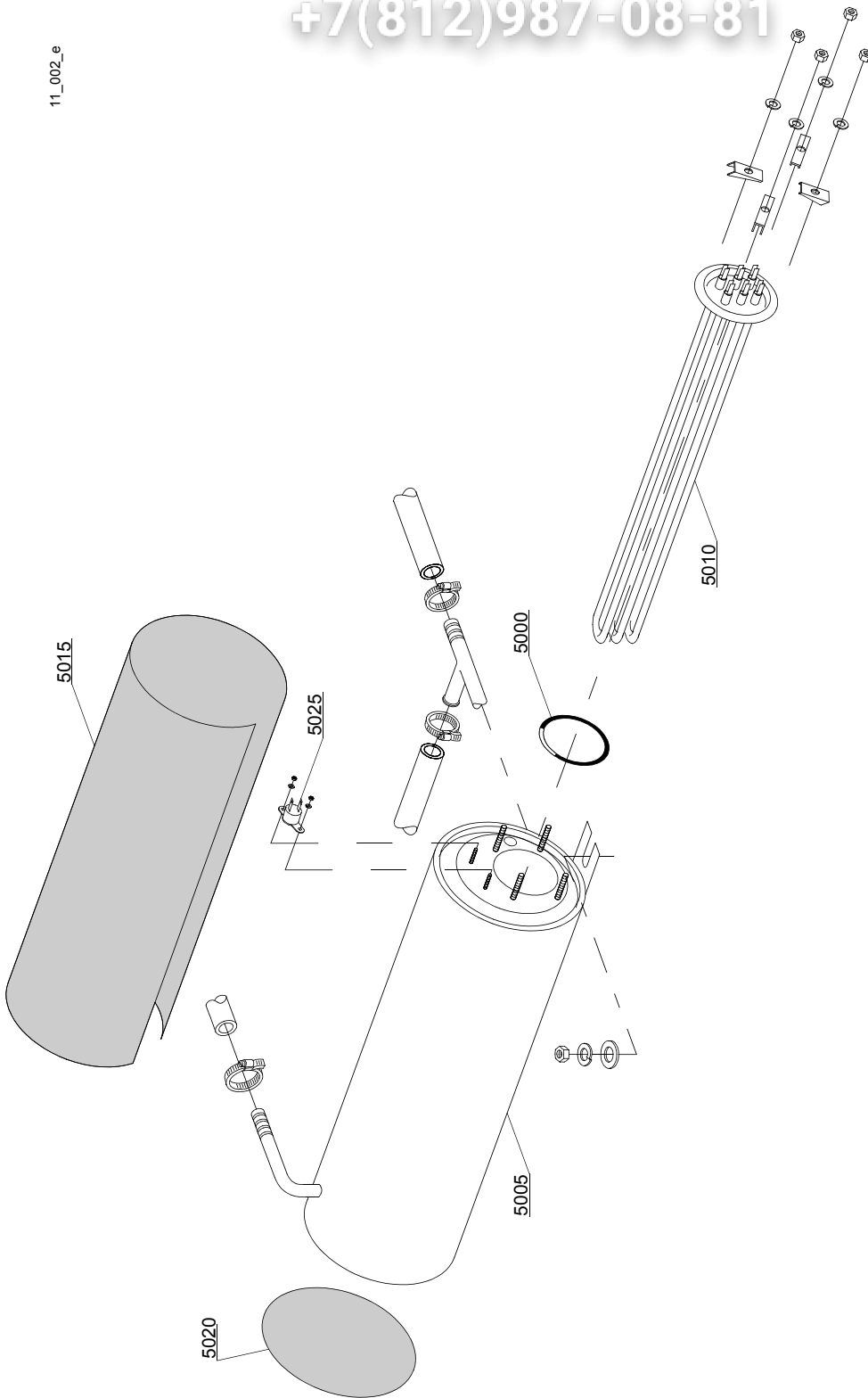
bt=BREAK TANK, bp=BOOSTER PUMP, dvgw=DVGW, cr=COLD RINSE, ws=WATER SOFTNER, dd=DETERGENT
DISPENSER, dp=DRAIN PUMP

A=3/N/PE~380-400V 50-60Hz, D=3/PE~200-210V 50-60Hz, F=2/PE~220-240V 50-60Hz, G=3/N/PE~415V 50-60Hz,
H=3/PE~220-230V 50-60Hz, K=3/PE~380-400V 50-60Hz, L=3/PE~415V 50-60Hz, M=3/PE~440V 60Hz, P=1/N/PE~220-
230V 50-60Hz, R=2/PE~220-240V 50-60Hz, U=1/N/PE~240V 50-60Hz, V=3/PE~240V 50-60Hz, W=1/N/PE~100-110V
50-60Hz

vsezip.ru

+7(812)987-08-81

11_002_e



| ID | P-code | SN from | SN to | Mod. | Acces. | Volt | Description |
|----------------------------|---------|---------|-------|------|--------|------|---------------------------------------|
| Module:Boiler group | | | | | | | |
| 5000 | 13005 | | - | e,em | | | OR 151 NBR O-ring (minimum 5 pieces) |
| 5005 | 150905 | | - | e,em | | | Boiler |
| 5005 | 150917 | | - | e,em | | | AISI 314 boiler |
| 5010 | 15089 | | - | e,em | | | 4,5/4,9KW 230/240V 3 heating element |
| 5010 | 15089/B | | - | e,em | | | 4,5KW heating element - 254/440Vac |
| 5010 | 15089/C | | - | e,em | | | 3,5KW - 110V heating element |
| 5010 | 15089/D | | - | e,em | | | 2,8/3,05KW - 230/240V heating element |
| 5010 | 15089/E | | - | e,em | | | 6/6,53KW - 230/240V 3 heating element |
| 5015 | 15066 | | - | e,em | | | Insulation boiler |
| 5020 | 15205 | | - | e,em | | | Ø160 End piece (minimum 2 pieces) |
| 5025 | 15550 | | - | e,em | | | Safety thermostat |

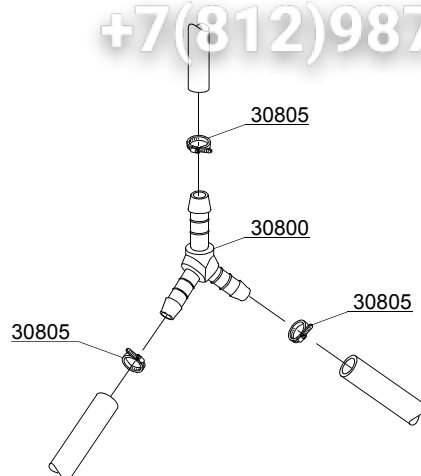
em=ELECTROMECHANICAL SWITCHES, e=ELECTRONICAL SWITCHES, uw=LOWER AND UPPER WASHING
9R=9R

bt=BREAK TANK, bp=BOOSTER PUMP, dvgw=DVGW, cr=COLD RINSE, ws=WATER SOFTNER, dd=DETERGENT
DISPENSER, dp=DRAIN PUMP

A=3/N/PE~380-400V 50-60Hz, D=3/PE~200-210V 50-60Hz, F=2/PE~220-240V 50-60Hz, G=3/N/PE~415V 50-60Hz,
H=3/PE~220-230V 50-60Hz, K=3/PE~380-400V 50-60Hz, L=3/PE~415V 50-60Hz, M=3/PE~440V 60Hz, P=1/N/PE~220-
230V 50-60Hz, R=2/PE~220-240V 50-60Hz, U=1/N/PE~240V 50-60Hz, V=3/PE~240V 50-60Hz, W=1/N/PE~100-110V
50-60Hz

vsezip.ru

+7(812)987-08-81



12_003ae

vsezip.ru

| ID | P-code | SN from | SN to | Mod | Acces. | Volt | Description |
|---------------------------------|--------|---------|-------|------|--------|------|----------------------------------|
| Module:3 ways connection | | | | | | | |
| 30800 | 540091 | | - | e,em | | | Ø12 mm plastic 3 ways connection |
| 30805 | 11807 | | - | e,em | | | 12/22 clamp (minimum 3 pieces) |

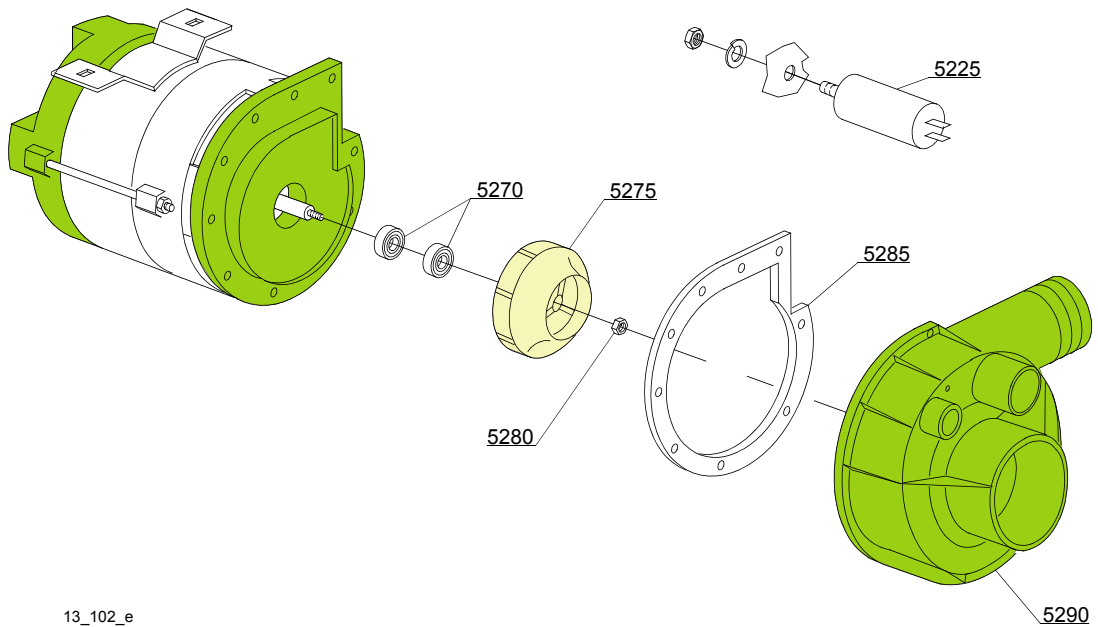
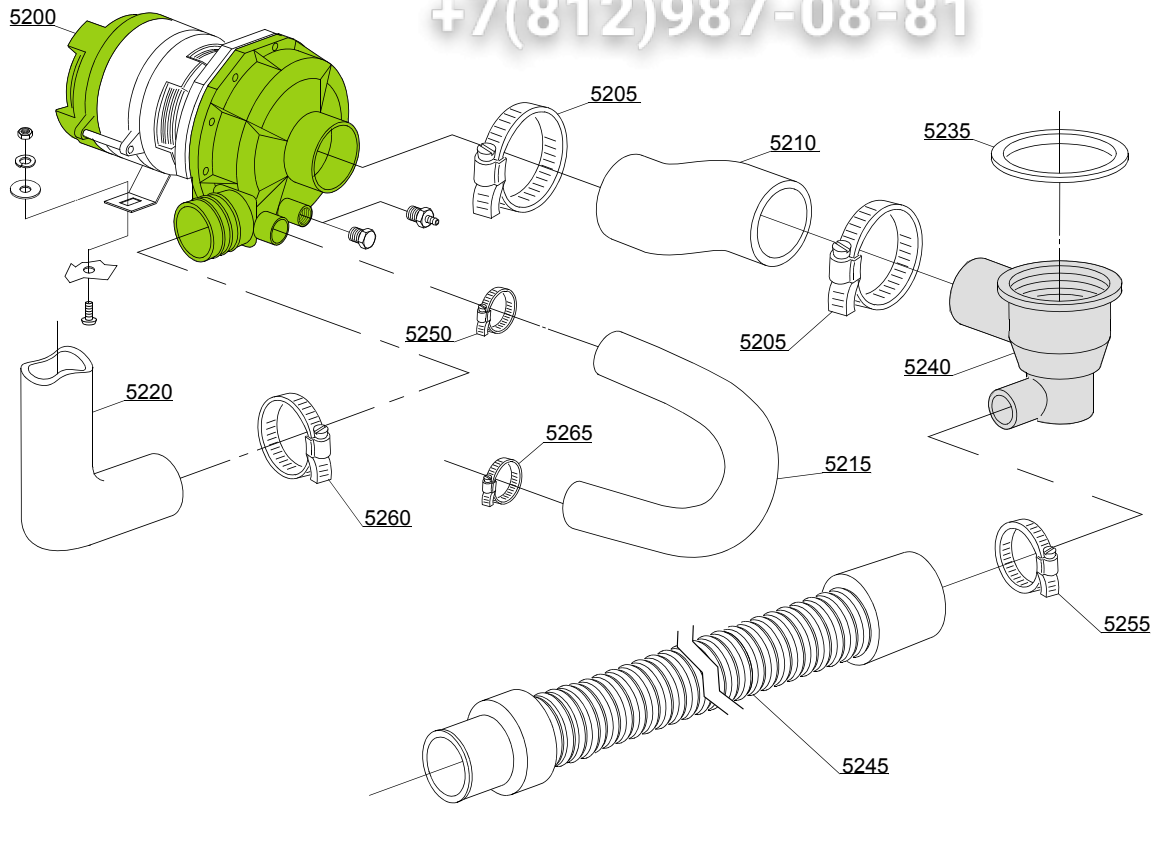
em=ELECTROMECHANICAL SWITCHES, e=ELECTRONICAL SWITCHES, uw=LOWER AND UPPER WASHING
9R=9R

bt=BREAK TANK, bp=BOOSTER PUMP, dvgw=DVGW, cr=COLD RINSE, ws=WATER SOFTNER, dd=DETERGENT
DISPENSER, dp=DRAIN PUMP

A=3/N/PE~380-400V 50-60Hz, D=3/PE~200-210V 50-60Hz, F=2/PE~220-240V 50-60Hz, G=3/N/PE~415V 50-60Hz,
H=3/PE~220-230V 50-60Hz, K=3/PE~380-400V 50-60Hz, L=3/PE~415V 50-60Hz, M=3/PE~440V 60Hz, P=1/N/PE~220-
230V 50-60Hz, R=2/PE~220-240V 50-60Hz, U=1/N/PE~240V 50-60Hz, V=3/PE~240V 50-60Hz, W=1/N/PE~100-110V
50-60Hz

vsezip.ru

+7(812)987-08-81



13_102_e

vsezip.ru

| ID | P-code | SN from | SN to | Mod. | Acces. | Volt | Description |
|--------------------------|---------|---------|-------|------|--------|------|--------------------------------------|
| Module: Wash pump | | | | | | | |
| 5200 | 15908/A | | - | uw | | A | 0,75Hp wash pump - 220/240V 50Hz |
| 5200 | 15908/P | | - | uw | | | 0,75Hp - 110Vac 60Hz wash pump |
| 5200 | 15908/O | | - | uw | | | 0,75Hp - 200Vac 50Hz wash pump |
| 5200 | 15908/D | | - | uw | | | 1Hp wash pump - 220/240Vac 50Hz |
| 5200 | 15908/E | | - | uw | | A | 0,75Hp wash pump - 440V/3/60Hz |
| 5205 | 11824 | | - | uw | | | 50/70 clamp (minimum 2 pieces) |
| 5210 | 25032 | | - | uw | | | Suction pipe coupling |
| 5215 | 560014 | | - | uw | | | Pump/lower wash turret delivery pipe |
| 5220 | 560008 | | - | uw | | | Top delivery pipe |
| 5225 | 15081 | | - | uw | | | 12,5 uF condenser |
| 5235 | 80208 | | - | uw | | | 95x75x3 O-ring (minimum 2 pieces) |
| 5240 | 500606 | | - | uw | | | Right side scrap tray |
| 5245 | 10727 | | - | uw | | | Drain pipe |
| 5250 | 11806 | | - | uw | | | 25/40 clamp (minimum 2 pieces) |
| 5255 | 11807 | | - | uw | | | 12/22 clamp (minimum 3 pieces) |
| 5260 | 11810 | | - | uw | | | 40/60 clamp (minimum 2 pieces) |
| 5265 | 11809 | | - | uw | | | 30/45 clamp (minimum 2 pieces) |
| 5270 | 15080/C | | - | uw | | | Rotating seals |
| 5270 | 15080 | | - | uw | | | Rotating seals (1HP) |
| 5275 | 15079/B | | - | uw | | | Pump rotor |
| 5275 | 15912 | | - | uw | | | Pump rotor (1HP) |
| 5280 | 11724 | | - | uw | | | M6 stainless steel nut |
| 5285 | 15079/D | | - | uw | | | O-ring |
| 5290 | 15031/E | | - | uw | | | Scroll |

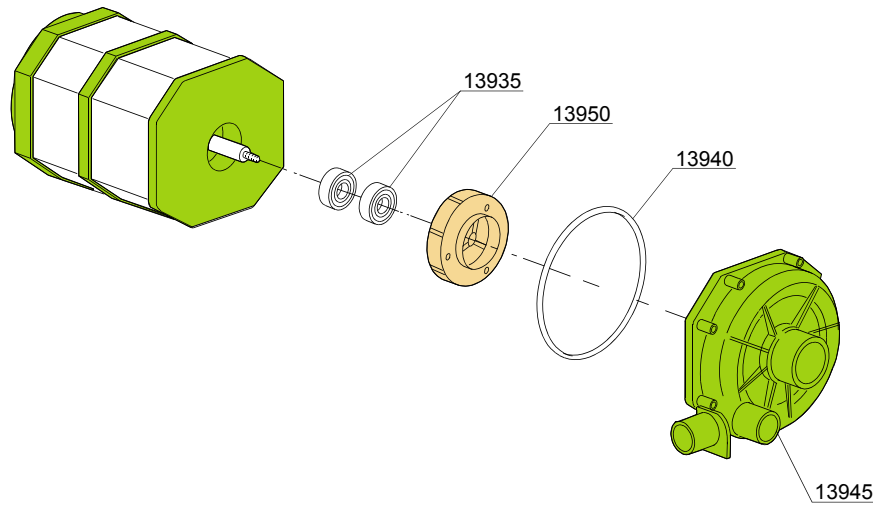
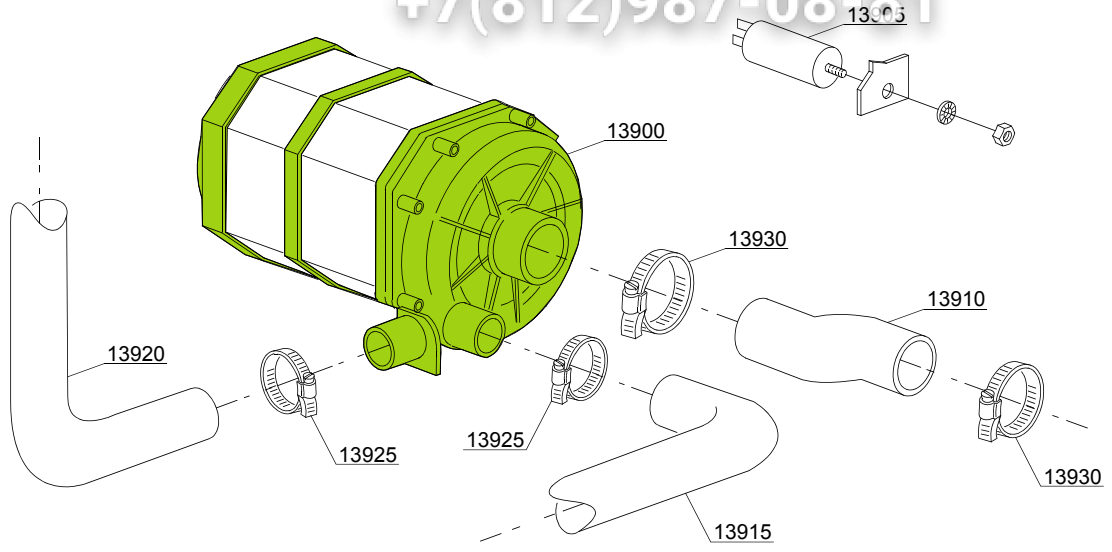
em=ELECTROMECHANICAL SWITCHES, e=ELECTRONICAL SWITCHES, uw=LOWER AND UPPER WASHING
9R=9R

bt=BREAK TANK, bp=BOOSTER PUMP, dvgw=DVGW, cr=COLD RINSE, ws=WATER SOFTNER, dd=DETERGENT
DISPENSER, dp=DRAIN PUMP

A=3/N/PE~380-400V 50-60Hz, D=3/PE~200-210V 50-60Hz, F=2/PE~220-240V 50-60Hz, G=3/N/PE~415V 50-60Hz,
H=3/PE~220-230V 50-60Hz, K=3/PE~380-400V 50-60Hz, L=3/PE~415V 50-60Hz, M=3/PE~440V 60Hz, P=1/N/PE~220-
230V 50-60Hz, R=2/PE~220-240V 50-60Hz, U=1/N/PE~240V 50-60Hz, V=3/PE~240V 50-60Hz, W=1/N/PE~100-110V
50-60Hz

vsezip.ru

+7(812)987-08-81



13_110_e

vsezip.ru

| ID | P-code | SN from | SN to | Mod. | Acces. | Volt | Description |
|--------------------------|----------|---------|-------|------|--------|------|-----------------------------------|
| Module: Wash pump | | | | | | | |
| 13900 | 150914 | | - | uw | | | 0,70Hp wash pump - 230Vac 50Hz |
| 13900 | 150915 | | - | uw | | | 0,70Hp wash pump - 230Vac 60Hz |
| 13905 | 15081 | | - | uw | | | 12,5 uF condenser |
| 13910 | 25032/A | | - | uw | | | Suction pipe coupling |
| 13915 | 150049 | | - | uw | | | Lower wash pipe coupling |
| 13920 | 150048/A | | - | uw | | | Wash ramp |
| 13925 | 11806 | | - | uw | | | 25/40 clamp (minimum 2 pieces) |
| 13930 | 11809 | | - | uw | | | 30/45 clamp (minimum 2 pieces) |
| 13935 | 15080 | | - | uw | | | Rotating seals |
| 13940 | 7130 | | - | uw | | | OR pump O-ring (minimum 2 pieces) |
| 13945 | 16182 | | - | uw | | | Scroll |
| 13950 | 15079/F | | - | uw | | | Pump rotor |

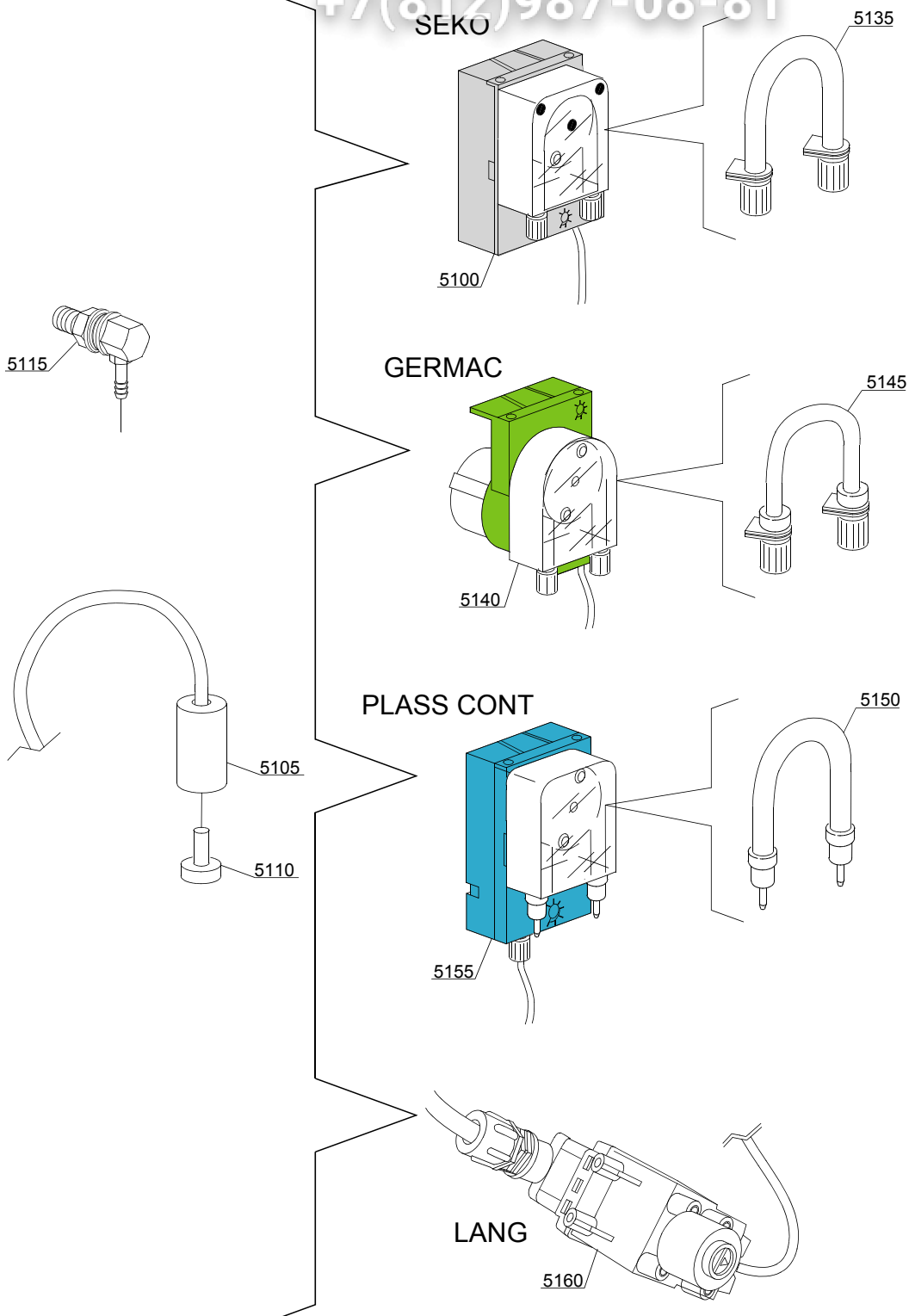
em=ELECTROMECHANICAL SWITCHES, e=ELECTRONICAL SWITCHES, uw=LOWER AND UPPER WASHING
9R=9R

bt=BREAK TANK, bp=BOOSTER PUMP, dvgw=DVGW, cr=COLD RINSE, ws=WATER SOFTNER, dd=DETERGENT
DISPENSER, dp=DRAIN PUMP

A=3/N/PE~380-400V 50-60Hz, D=3/PE~200-210V 50-60Hz, F=2/PE~220-240V 50-60Hz, G=3/N/PE~415V 50-60Hz,
H=3/PE~220-230V 50-60Hz, K=3/PE~380-400V 50-60Hz, L=3/PE~415V 50-60Hz, M=3/PE~440V 60Hz, P=1/N/PE~220-
230V 50-60Hz, R=2/PE~220-240V 50-60Hz, U=1/N/PE~240V 50-60Hz, V=3/PE~240V 50-60Hz, W=1/N/PE~100-110V
50-60Hz

vsezip.ru

+7(812)987-08-81



14_004_e

| ID | P-code | SN from | SN to | Mod. | Acces | Volt | Description |
|--------------------------------------|---------|---------|-------|------|-------|------|-----------------------------------|
| Module:Dosing detergent group | | | | | | | |
| 5100 | 15985 | | - | em,e | dd | | Seko detergent pump |
| 5105 | 12525 | | - | em,e | dd | | Ballast |
| 5110 | 15058 | | - | em,e | dd | | Small filter (minimum 3 pieces) |
| 5115 | 15123 | | - | em,e | dd | | Compleat stainless steel injector |
| 5135 | 15185 | | - | em,e | dd | | Seko thermoplastic pipe |
| 5140 | 15985 | | - | em,e | dd | | Germac detergent pump |
| 5145 | 15108/E | | - | em,e | dd | | Germac thermoplastic pipe |
| 5150 | 15985/A | | | em,e | dd | | Plas Cont thermoplastic pipe |
| 5155 | 15985 | | | em,e | dd | | Plas Cont detergent pump |
| 5160 | 15108/L | | | em,e | dd | | LANG detergent pump |

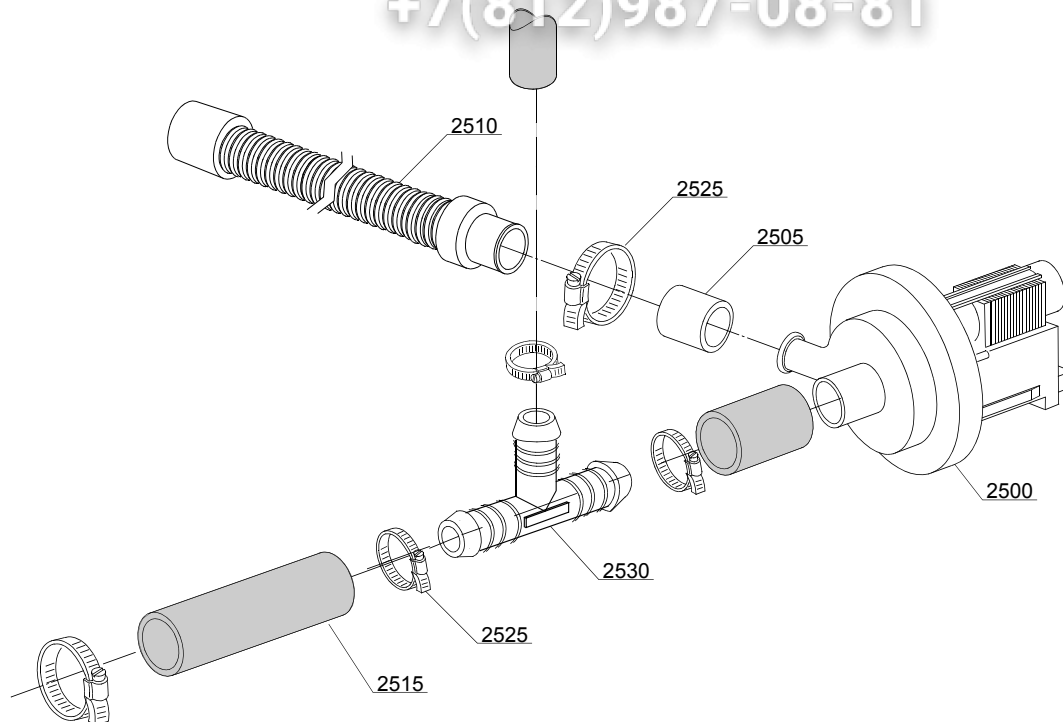
em=ELECTROMECHANICAL SWITCHES, e=ELECTRONICAL SWITCHES, uw=LOWER AND UPPER WASHING
9R=9R

bt=BREAK TANK, bp=BOOSTER PUMP, dvgw=DVGW, cr=COLD RINSE, ws=WATER SOFTNER, dd=DETERGENT
DISPENSER, dp=DRAIN PUMP

A=3/N/PE~380-400V 50-60Hz, D=3/PE~200-210V 50-60Hz, F=2/PE~220-240V 50-60Hz, G=3/N/PE~415V 50-60Hz,
H=3/PE~220-230V 50-60Hz, K=3/PE~380-400V 50-60Hz, L=3/PE~415V 50-60Hz, M=3/PE~440V 60Hz, P=1/N/PE~220-
230V 50-60Hz, R=2/PE~220-240V 50-60Hz, U=1/N/PE~240V 50-60Hz, V=3/PE~240V 50-60Hz, W=1/N/PE~100-110V
50-60Hz

vsezip.ru

+7(812)987-08-81



15_004be

vsezip.ru

| ID | P-code | SN from | SN to | Mod. | Acces. | Volt | Description |
|---------------------------------|---------|---------|-------|------|--------|------|--|
| Module: Drain pump group | | | | | | | |
| 2500 | 15101 | | - | em,e | dp | | Drain pump 220/240V 50Hz |
| 2505 | 15101/D | | - | em,e | dp | | Pipe fitting (minimum 3 pieces) |
| 2510 | 10727 | | - | em,e | dp | | Drain pipe |
| 2515 | 18044 | | - | em,e | dp | | Ø28 top wash pipe |
| 2525 | 11806 | | - | em,e | dp | | 25/40 clamp (minimum 2 pieces) |
| 2530 | 540098 | | - | em,e | dp,bt | | D25 3 ways connection for BREAK TANK(bt) |

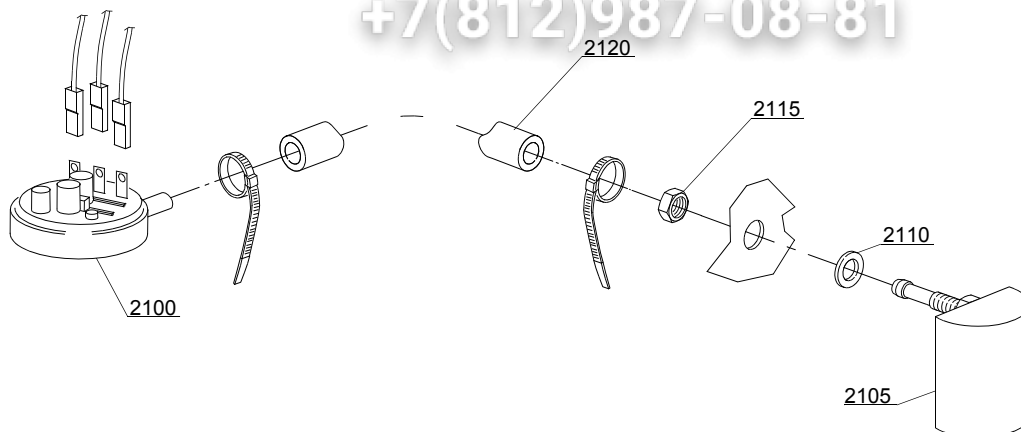
em=ELECTROMECHANICAL SWITCHES, e=ELECTRONICAL SWITCHES, uw=LOWER AND UPPER WASHING
9R=9R

bt=BREAK TANK, bp=BOOSTER PUMP, dvgw=DVGW, cr=COLD RINSE, ws=WATER SOFTNER, dd=DETERGENT
DISPENSER, dp=DRAIN PUMP

A=3/N/PE~380-400V 50-60Hz, D=3/PE~200-210V 50-60Hz, F=2/PE~220-240V 50-60Hz, G=3/N/PE~415V 50-60Hz,
H=3/PE~220-230V 50-60Hz, K=3/PE~380-400V 50-60Hz, L=3/PE~415V 50-60Hz, M=3/PE~440V 60Hz, P=1/N/PE~220-
230V 50-60Hz, R=2/PE~220-240V 50-60Hz, U=1/N/PE~240V 50-60Hz, V=3/PE~240V 50-60Hz, W=1/N/PE~100-110V
50-60Hz

vsezip.ru

+7(812)987-08-81



16_001_e

vsezip.ru

| ID | P-code | SN from | SN to | Mod | Acces. | Volt | Description |
|--|----------|---------|-------|------|--------|------|--|
| Module: Pressure switch group with air trap | | | | | | | |
| 2100 | 10706/A | | - | em,e | | | 47-27 pressure switch |
| 2105 | 135911/B | 4020618 | - | em,e | | | Grey air trap assembly |
| 2110 | 13301 | | - | em,e | | | O-ring (minimum 10 pieces) - D14x8x1,5 |
| 2115 | 11702 | | - | em,e | | | M8 stainless steel nut (minimum 10 pieces) |
| 2120 | 14508 | | - | em,e | | | 4,5X9 EPDM rubber hose (minimum 2mt) |

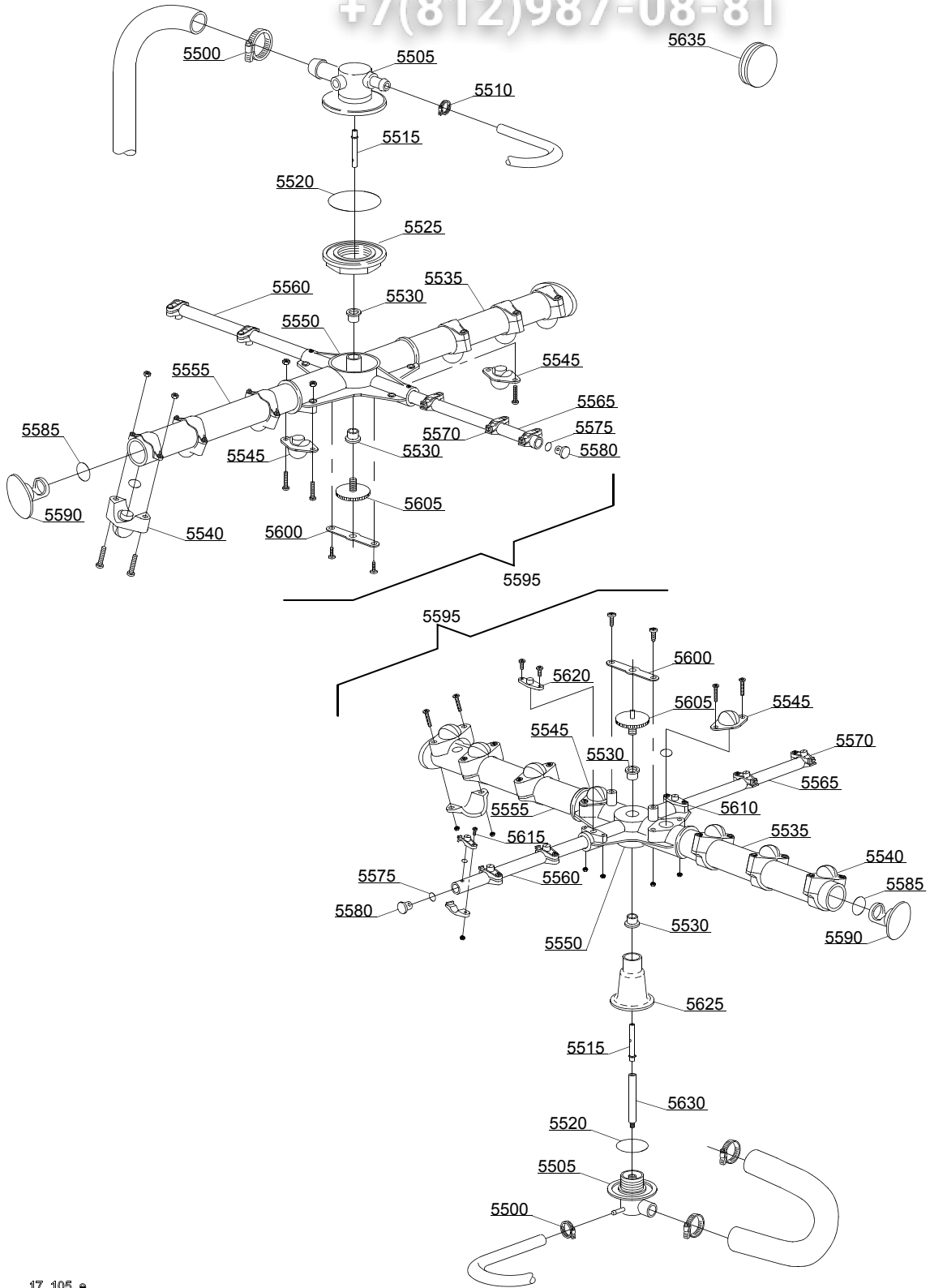
em=ELECTROMECHANICAL SWITCHES, e=ELECTRONICAL SWITCHES, uw=LOWER AND UPPER WASHING
9R=9R

bt=BREAK TANK, bp=BOOSTER PUMP, dvgw=DVGW, cr=COLD RINSE, ws=WATER SOFTNER, dd=DETERGENT
DISPENSER, dp=DRAIN PUMP

A=3/N/PE~380-400V 50-60Hz, D=3/PE~200-210V 50-60Hz, F=2/PE~220-240V 50-60Hz, G=3/N/PE~415V 50-60Hz,
H=3/PE~220-230V 50-60Hz, K=3/PE~380-400V 50-60Hz, L=3/PE~415V 50-60Hz, M=3/PE~440V 60Hz, P=1/N/PE~220-
230V 50-60Hz, R=2/PE~220-240V 50-60Hz, U=1/N/PE~240V 50-60Hz, V=3/PE~240V 50-60Hz, W=1/N/PE~100-110V
50-60Hz

vsezip.ru

+7(812)987-08-81



17_105_9

| ID | P-code | SN from | SN to | Mod. | Acces. | Volt | Description |
|---|---------|---------|---------|---------|--------|------|--|
| Module:Turret group with rotating arms | | | | | | | |
| 5500 | 11806 | | - | e,em,uw | | | 25/40 clamp (minimum 2 pieces) |
| 5505 | 500612 | | - | e,em,uw | | | Top/lower turret |
| 5510 | 11807 | | - | e,em,uw | | | 12/22 clamp (minimum 3 pieces) |
| 5515 | 15300 | | - | e,em,uw | | | Ø10x51 lower/top rinse axle |
| 5520 | 13015 | | - | e,em,uw | | | 6225 OR 160 NBR O-ring (minimum 5 pieces) |
| 5525 | 500623 | 4017774 | - | e,em,uw | | | Ring nut for fixing turret |
| 5530 | 13319 | | - | e,em,uw | | | Sliding washer (minimum 4 pieces) |
| 5535 | 15571 | | - | e,em,uw | | | Ø28 right wash pipe |
| 5540 | 10261 | | - | e,em,uw | | | Ø28 raised nozzle (minimum 2 pieces) |
| 5545 | 10268 | | - | e,em,uw | | | Ø28 opened plane nozzle (minimum 2 pieces) |
| 5550 | 10259 | | - | e,em,uw | | | 4 ways big rotor |
| 5555 | 15572 | | - | e,em,uw | | | Ø28 left wash pipe |
| 5560 | 15575 | | - | e,em,uw | | | Right rinse pipe |
| 5565 | 15576 | | - | e,em,uw | | | Left rinse pipe |
| 5570 | 10262 | | - | e,em,uw | | | Ø10 complet rinse nozzle (minimum 2 pieces) |
| 5575 | 13016 | | - | e,em,uw | | | 2018 OR 103 NBR O-ring (minimum 10 pieces) |
| 5580 | 12532 | | - | e,em,uw | | | Ø10 plastic plug (minimum 3 pieces) |
| 5585 | 13018 | | - | e,em,uw | | | OR 2087 NBR O-ring (minimum 10 pieces) |
| 5590 | 10257 | | - | e,em,uw | | | Ø28 plastic plug (minimum 3 pieces) |
| 5595 | 15958 | | - | e,em,uw | | | Ø28 wash/rinse group |
| 5600 | 10260 | | - | e,em,uw | | | Blocking ring nut rotor plaque (minimum 10 pieces) |
| 5605 | 11101/I | | - | e,em,uw | | | Stainless steel group fixing screw |
| 5610 | 10267 | | - | e,em,uw | | | Ø10 closed plane nozzle (minimum 2 pieces) |
| 5615 | 11004 | | - | e,em,uw | | | 4x10 TCB Ø8 spax toothed screw |
| 5620 | 10263 | | - | e,em,uw | | | Ø10 opened plane nozzle (minimum 2 pieces) |
| 5625 | 560004 | | 4010319 | e,em,uw | | | Lower pipe coupling |
| 5625 | 560024 | 4010320 | - | e,em,uw | | | Lower pipe coupling |
| 5625 | 550225 | | 4023175 | e,em,uw | | | Lower pipe coupling |

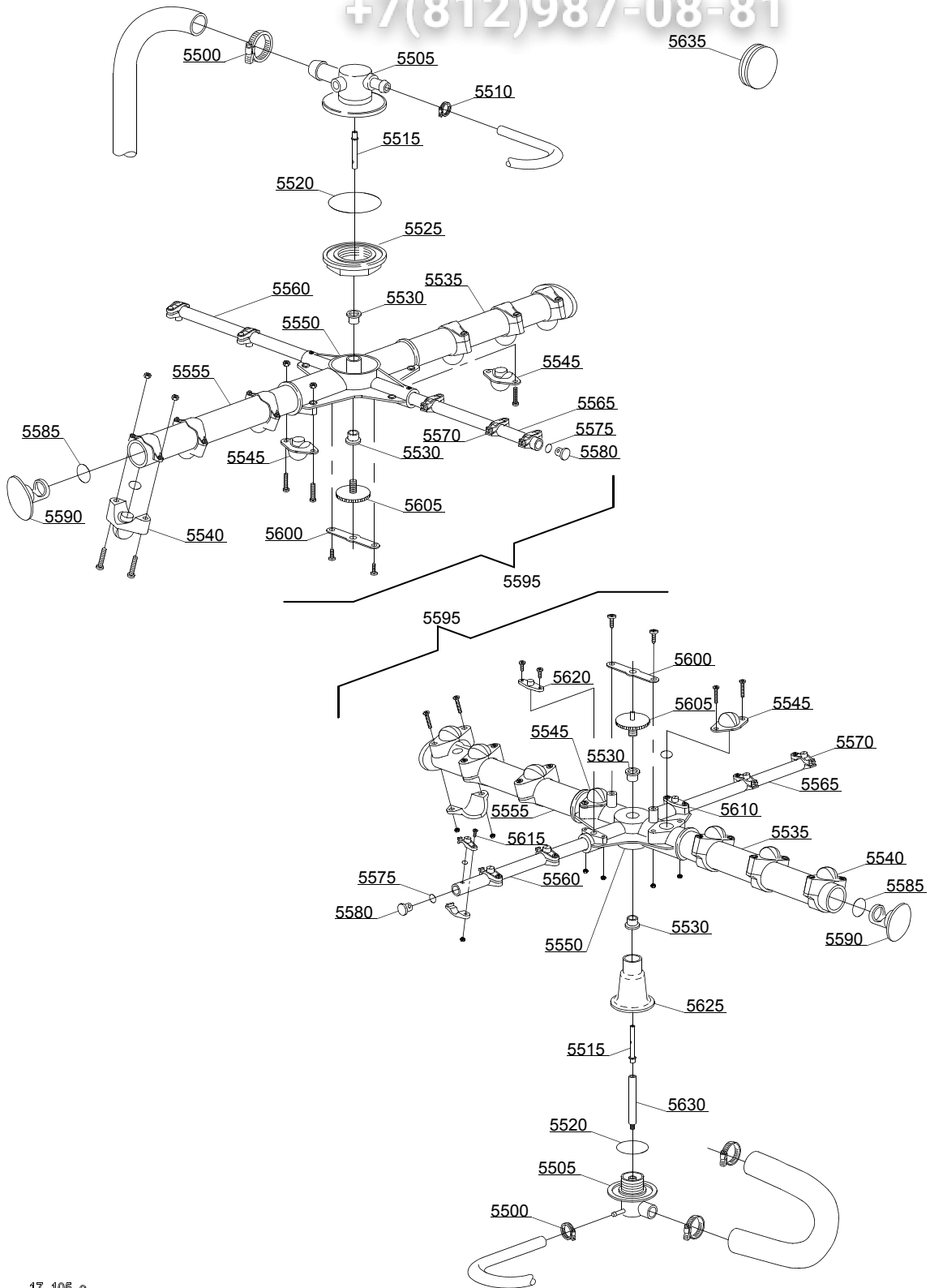
em=ELECTROMECHANICAL SWITCHES, e=ELECTRONICAL SWITCHES, uw=LOWER AND UPPER WASHING
9R=9R

bt=BREAK TANK, bp=BOOSTER PUMP, dvgw=DVGW, cr=COLD RINSE, ws=WATER SOFTNER, dd=DETERGENT
DISPENSER, dp=DRAIN PUMP

A=3/N/PE~380-400V 50-60Hz, D=3/PE~200-210V 50-60Hz, F=2/PE~220-240V 50-60Hz, G=3/N/PE~415V 50-60Hz,
H=3/PE~220-230V 50-60Hz, K=3/PE~380-400V 50-60Hz, L=3/PE~415V 50-60Hz, M=3/PE~440V 60Hz, P=1/N/PE~220-
230V 50-60Hz, R=2/PE~220-240V 50-60Hz, U=1/N/PE~240V 50-60Hz, V=3/PE~240V 50-60Hz, W=1/N/PE~100-110V
50-60Hz

vsezip.ru

+7(812)987-08-81



17_105_e

vsezip.ru

| ID | P-code | SN from | SN to | Mod. | Acces. | Volt | Description |
|---|---------|---------|-------|---------|--------|------|---------------------|
| Module:Turret group with rotating arms | | | | | | | |
| 5625 | 550225 | 4023176 | - | e,em,uw | | | Lower pipe coupling |
| 5630 | 550226 | | - | e,em,uw | | | Lower rinse axle |
| 5635 | 13316/A | | - | e,em,uw | | | DVGW hole O-ring |

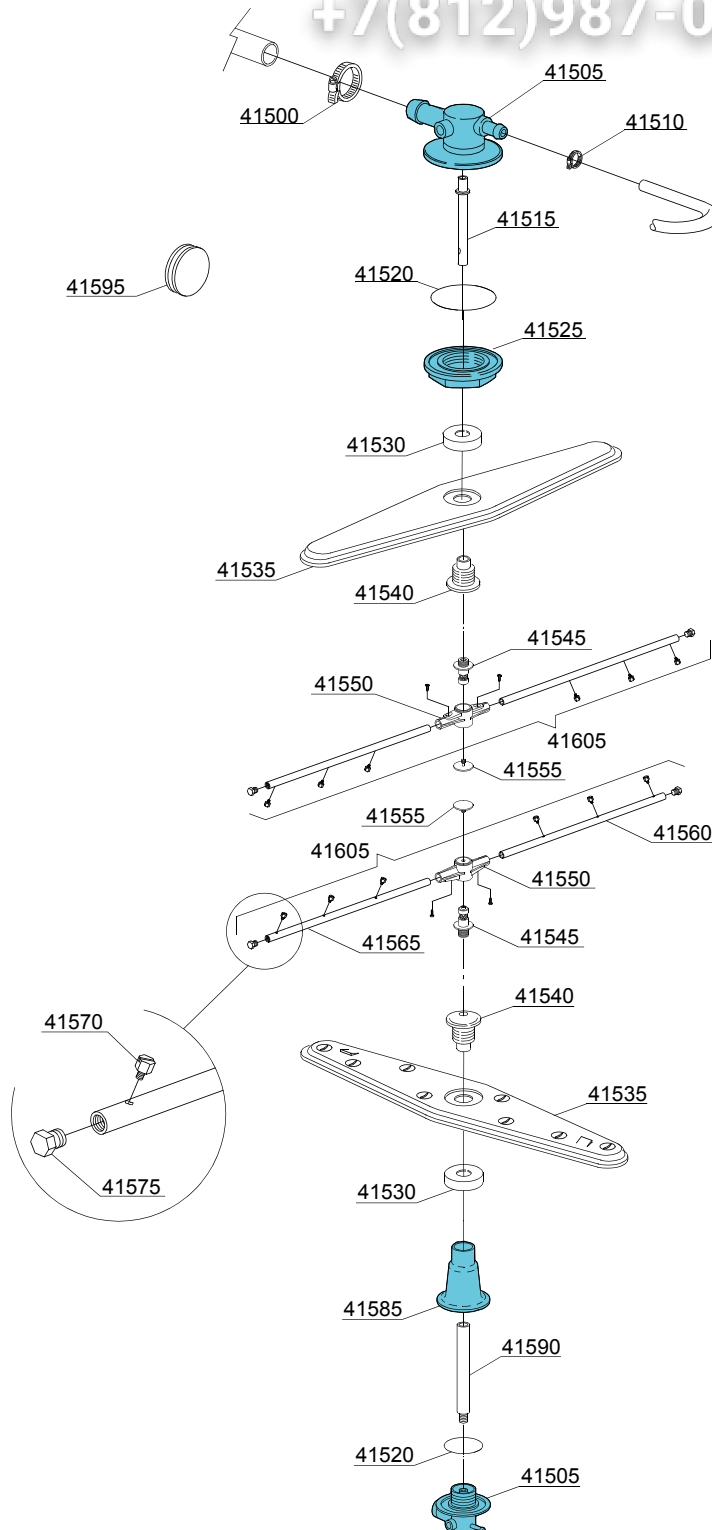
em=ELECTROMECHANICAL SWITCHES, e=ELECTRONICAL SWITCHES, uw=LOWER AND UPPER WASHING
9R=9R

bt=BREAK TANK, bp=BOOSTER PUMP, dvgw=DVGW, cr=COLD RINSE, ws=WATER SOFTNER, dd=DETERGENT
DISPENSER, dp=DRAIN PUMP

A=3/N/PE~380-400V 50-60Hz, D=3/PE~200-210V 50-60Hz, F=2/PE~220-240V 50-60Hz, G=3/N/PE~415V 50-60Hz,
H=3/PE~220-230V 50-60Hz, K=3/PE~380-400V 50-60Hz, L=3/PE~415V 50-60Hz, M=3/PE~440V 60Hz, P=1/N/PE~220-
230V 50-60Hz, R=2/PE~220-240V 50-60Hz, U=1/N/PE~240V 50-60Hz, V=3/PE~240V 50-60Hz, W=1/N/PE~100-110V
50-60Hz

vsezip.ru

+7(812)987-08-81



17_127_e

| ID | P-code | SN from | SN to | Mod | Acces. | Volt | Description |
|---|---------|---------|-------|------|--------|------|--|
| Module:Turret group with rotating arms | | | | | | | |
| 41500 | 11806 | | - | uw,e | | | 25/40 clamp (minimum 2 pieces) |
| 41505 | 500612 | | - | uw,e | | | Top/lower turret |
| 41510 | 11807 | | - | uw,e | | | 12/22 clamp (minimum 3 pieces) |
| 41515 | 75315 | | - | uw,e | | | Rinse axle extension |
| 41515 | 500703 | | - | uw,e | | | Upper rinse axle extension |
| 41520 | 13015 | | - | uw,e | | | 6225 OR 160 NBR O-ring (minimum 5 pieces) |
| 41525 | 500623 | | - | uw,e | | | Ring nut for fixing turret |
| 41530 | 500702 | | - | uw,e | | | Nut for wash arm bearing 05 (inox rinse arm) |
| 41535 | 500700 | | - | uw,e | | | Stainless steel wash rotor |
| 41540 | 500701 | | - | uw,e | | | Hub for rotor (inox rinse arm) |
| 41545 | 10651 | | - | uw,e | | | Rinse axle |
| 41550 | 10650 | | - | uw,e | | | Rinse arm |
| 41555 | 10652 | | - | uw,e | | | Rinse arm screw |
| 41560 | 10657 | | - | uw,e | | | Right rinse arm - stainless steel nozzle |
| 41565 | 10658 | | - | uw,e | | | Left rinse arm - stainless steel nozzle |
| 41570 | 560018 | | - | uw,e | | | Stainless steel rinse nozzle |
| 41575 | 560017 | | - | uw,e | | | Rinse arm plug |
| 41580 | 550220 | | - | uw,e | | | Hub rotor/pipe coupling spacer |
| 41585 | 550225 | | - | uw,e | | | Lower pipe coupling |
| 41590 | 500704 | | - | uw,e | | | Rinse lower distributor connection axle |
| 41595 | 13316/A | | - | uw,e | | | DVGW hole O-ring |
| 41605 | 75918 | | - | uw,e | | | Top/lower rinse arm complete |

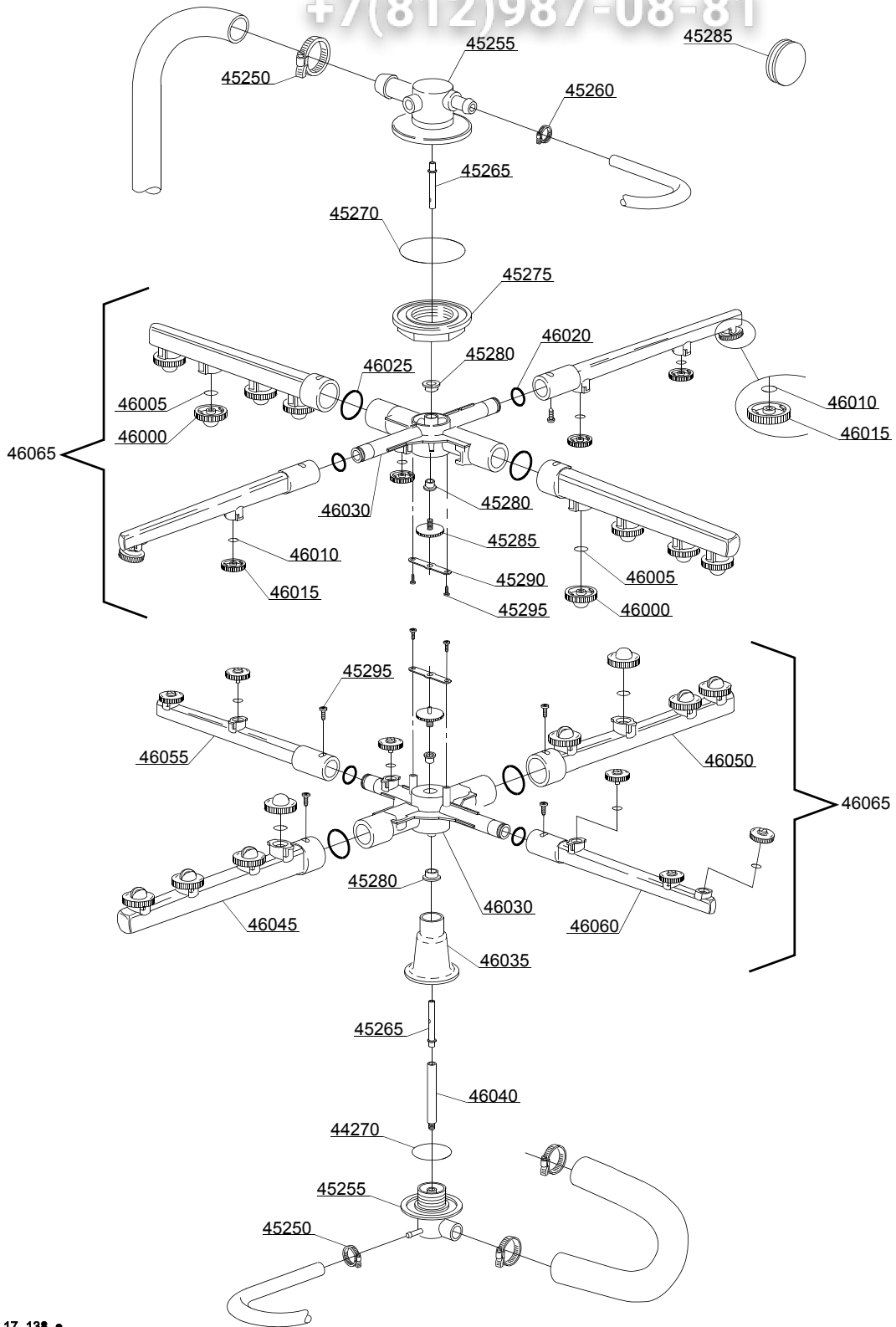
em=ELECTROMECHANICAL SWITCHES, e=ELECTRONICAL SWITCHES, uw=LOWER AND UPPER WASHING
9R=9R

bt=BREAK TANK, bp=BOOSTER PUMP, dvgw=DVGW, cr=COLD RINSE, ws=WATER SOFTNER, dd=DETERGENT
DISPENSER, dp=DRAIN PUMP

A=3/N/PE~380-400V 50-60Hz, D=3/PE~200-210V 50-60Hz, F=2/PE~220-240V 50-60Hz, G=3/N/PE~415V 50-60Hz,
H=3/PE~220-230V 50-60Hz, K=3/PE~380-400V 50-60Hz, L=3/PE~415V 50-60Hz, M=3/PE~440V 60Hz, P=1/N/PE~220-
230V 50-60Hz, R=2/PE~220-240V 50-60Hz, U=1/N/PE~240V 50-60Hz, V=3/PE~240V 50-60Hz, W=1/N/PE~100-110V
50-60Hz

vsezip.ru

+7(812)987-08-81



17_138_e

| ID | P-code | SN from | SN to | Mod. | Acces. | Volt | Description |
|---|---------|---------|-------|---------|--------|------|--|
| Module:Turret group with rotating arms | | | | | | | |
| 45250 | 11806 | | - | e,em,uw | | | 25/40 clamp (minimum 2 pieces) |
| 45255 | 500612 | | - | e,em,uw | | | Top/lower turret |
| 45260 | 11807 | | - | e,em,uw | | | 12/22 clamp (minimum 3 pieces) |
| 45265 | 15300 | | - | e,em,uw | | | Ø10x51 lower/top rinse axle |
| 45270 | 13015 | | - | e,em,uw | | | 6225 OR 160 NBR O-ring (minimum 5 pieces) |
| 45275 | 500623 | | - | e,em,uw | | | Ring nut for fixing turret |
| 45280 | 13319 | | - | e,em,uw | | | Sliding washer (minimum 4 pieces) |
| 45285 | 11101/I | | - | e,em,uw | | | Stainless steel group fixing screw |
| 45290 | 10260 | | - | e,em,uw | | | Blocking ring nut rotor plaque (minimum 10 pieces) |
| 45295 | 11004 | | - | e,em,uw | | | 4x10 TCB Ø8 spax toothed screw |
| 46000 | 10369 | | - | e,em,uw | | | Opened wash nozzle (minimum 2 pieces) |
| 46005 | 13009 | | - | e,em,uw | | | OR 2050 NBR O-ring (minimum 10 pieces) |
| 46010 | 13002 | | - | e,em,uw | | | OR R6 NBR O-ring (minimum 10 pieces) |
| 46015 | 10371 | | - | e,em,uw | | | Rinse nozzle |
| 46020 | 13002 | | - | e,em,uw | | | OR R6 NBR O-ring (minimum 10 pieces) |
| 46025 | 13025 | | - | e,em,uw | | | OR 2081 O-ring (minimum 10 pieces) |
| 46030 | 50755 | | - | e,em,uw | | | Under / upper turret wash rotor |
| 46035 | 550225 | | - | e,em,uw | | | Lower pipe coupling |
| 46040 | 550226 | | - | e,em,uw | | | Lower rinse axle |
| 46045 | 500754 | | - | e,em,uw | | | Left wash pipe |
| 46050 | 500753 | | - | e,em,uw | | | Right wash pipe |
| 46055 | 500751 | | - | e,em,uw | | | Right rinse arm |
| 46060 | 500752 | | - | e,em,uw | | | Left rinse arm |
| 46065 | 500750 | | - | e,em,uw | | | Wash group grey/rinse lower/upper distributor |

em=ELECTROMECHANICAL SWITCHES, e=ELECTRONICAL SWITCHES, uw=LOWER AND UPPER WASHING
9R=9R

bt=BREAK TANK, bp=BOOSTER PUMP, dvgw=DVGW, cr=COLD RINSE, ws=WATER SOFTNER, dd=DETERGENT
DISPENSER, dp=DRAIN PUMP

A=3/N/PE~380-400V 50-60Hz, D=3/PE~200-210V 50-60Hz, F=2/PE~220-240V 50-60Hz, G=3/N/PE~415V 50-60Hz,
H=3/PE~220-230V 50-60Hz, K=3/PE~380-400V 50-60Hz, L=3/PE~415V 50-60Hz, M=3/PE~440V 60Hz, P=1/N/PE~220-
230V 50-60Hz, R=2/PE~220-240V 50-60Hz, U=1/N/PE~240V 50-60Hz, V=3/PE~240V 50-60Hz, W=1/N/PE~100-110V
50-60Hz