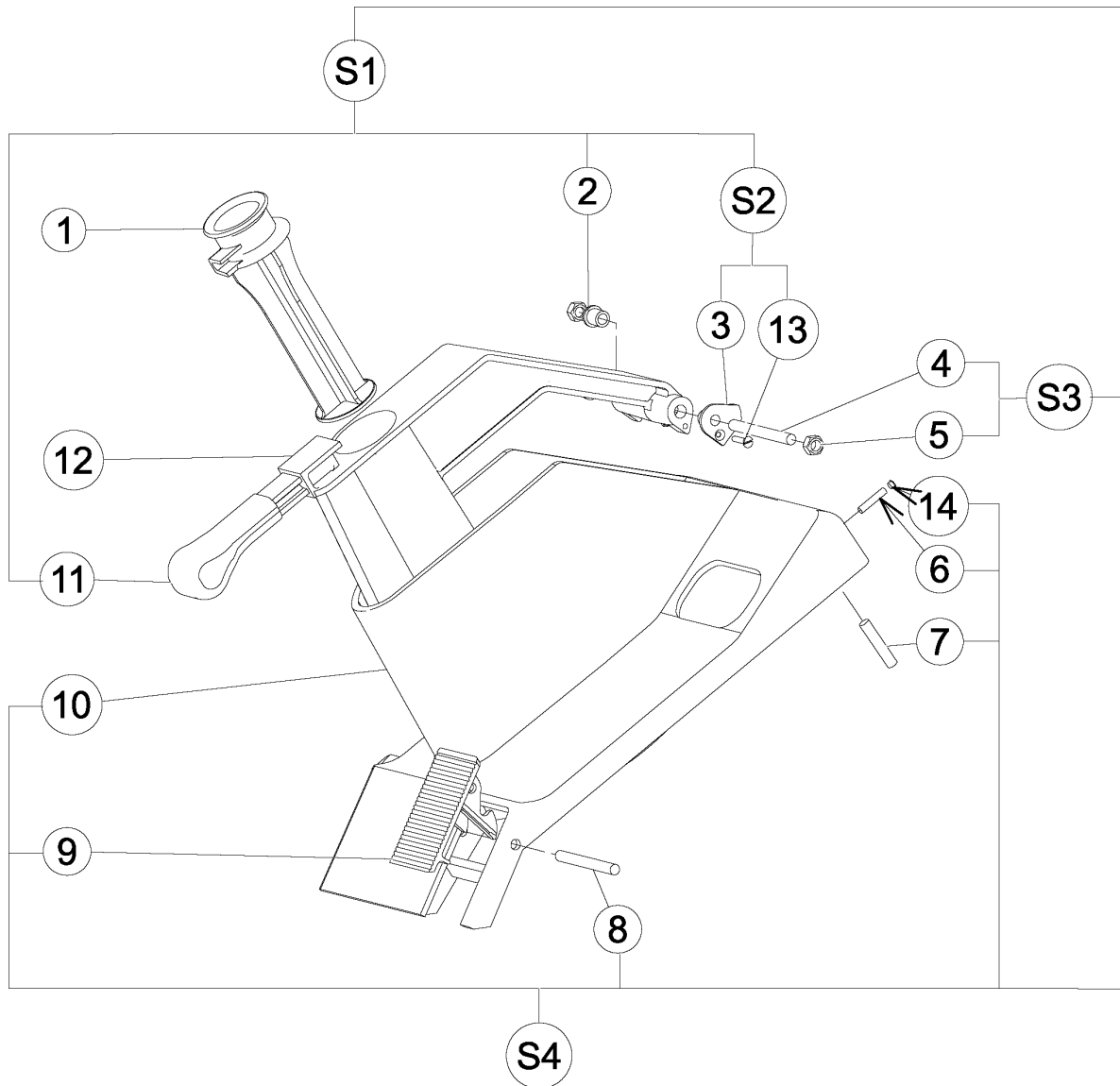


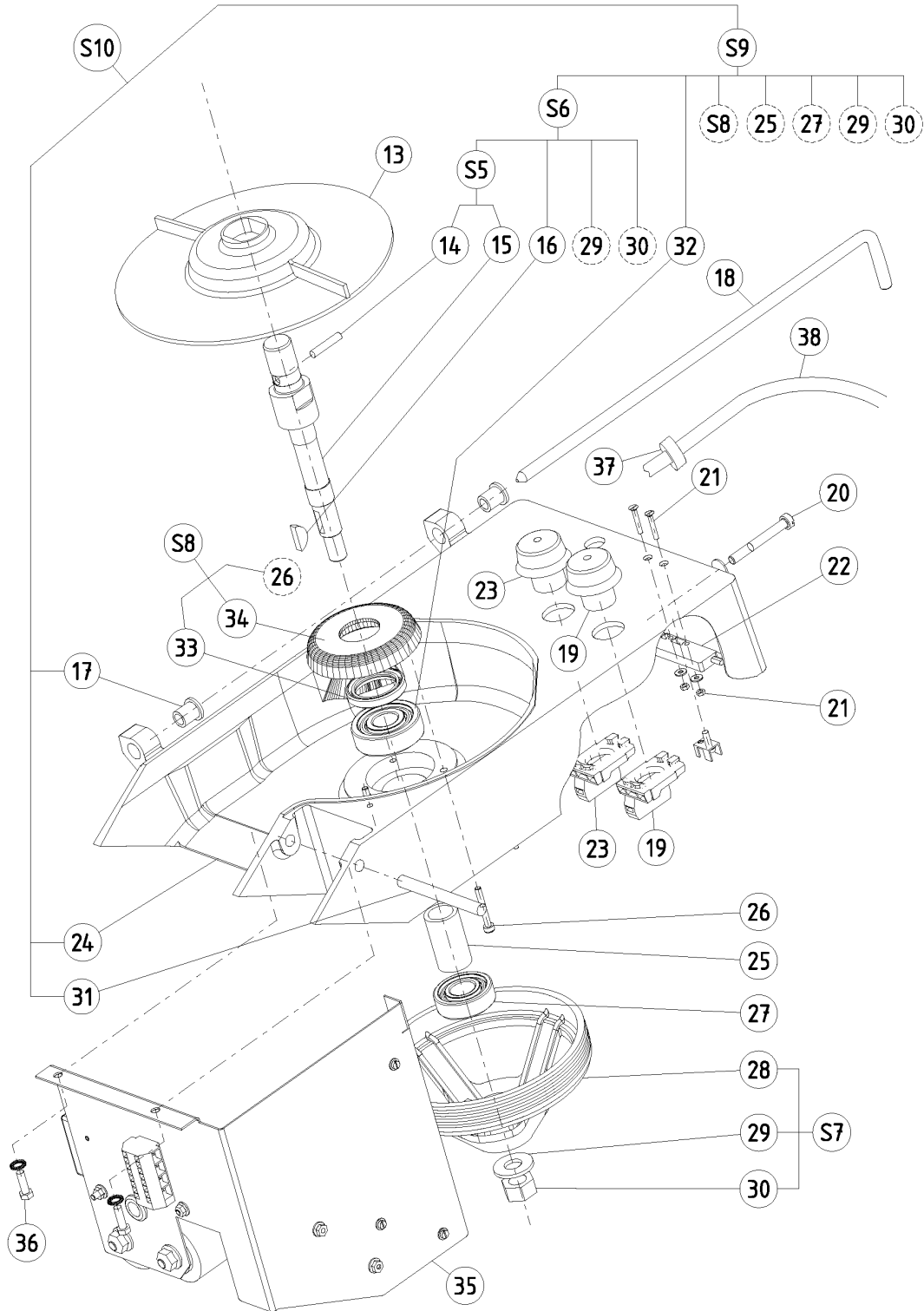
Зип Общепит

Vue éclatée Trémie / Hopper exploded view / Despiece - Tolva
vsezip.ru

+7(812)987-08-81



| Pos. | Spare Part | Alias Code | Repl. by | S | Info | Kit | Techn. Bulletin | Description | Notes |
|------|------------|------------|----------|---|------|-----|-----------------|---------------------------|--------|
| 0001 | 0KI992 | | | S | | | | FEED STICK | |
| 0002 | 0KJ599 | | | S | A | | | BUSHING; 5 PCS | |
| 0003 | 0D3620 | | | | | | | CAM TRS | |
| 0004 | 000000 | | | | | | | | |
| 0005 | 0KL161 | | | | | | | CAP NUT ; 10 PCS /M8 | |
| 0006 | 0D0522 | | | | | + | | SCREW; 10 PCS | |
| 0007 | 0KI586 | | | S | A | + | | MAGNET | |
| 0008 | 033596 | | | S | A | | | PIN | |
| 0009 | 0KI095 | | | S | A | | | LOCKING LEVER | |
| 0010 | 0KI788 | | | | | | | COVER | |
| 0011 | 033638 | | | S | A | | | HANDLE | |
| 0012 | 000000 | | | | | | | | See S1 |
| 0013 | 0KQ480 | | | | | | | SCREW; 10 PCS | |
| 0014 | 0D3482 | | | | | | | PLUG T10 (SET X10) | |
| 00S1 | 0KI993 | | | S | A | | | ALUMINUM LEVER + CAM; TRS | |
| 00S2 | 0U0446 | | | S | A | | | PLASTIC CAM | |
| 00S3 | 0KQ540 | | | S | A | | | AXIS | |
| 00S4 | 0KL205 | | | S | A | | | HOPPER | |

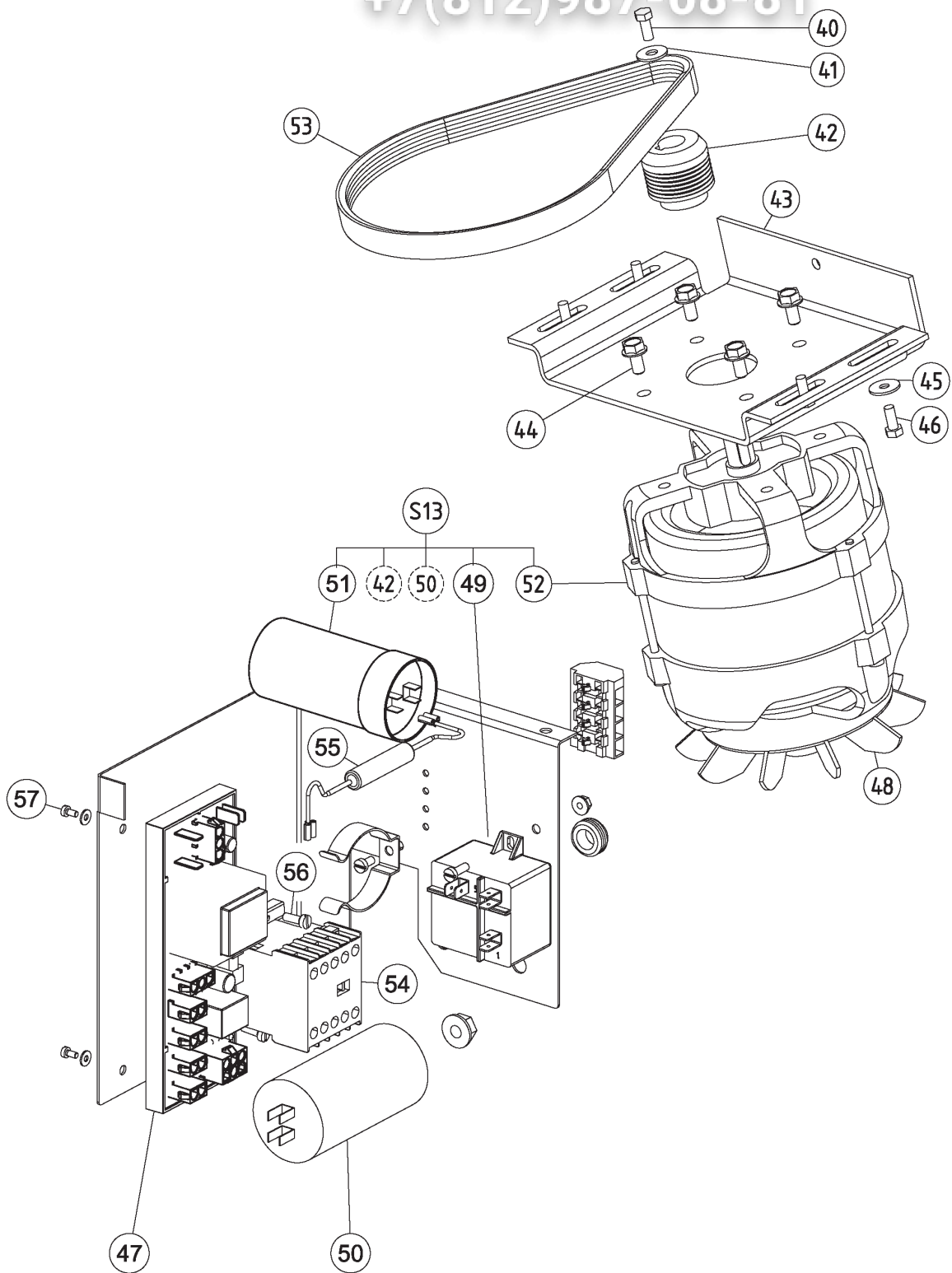


| Pos. | Spare Part | Alias Code | Repl. by | S | Info | Kit | Techn. Bulletin | Description | Notes |
|--------------------|------------|------------|----------|---|------|-----|-----------------|--------------------------------------|---------|
| Model | All | | | | | | | | |
| Table | SPTR24 | | | | | | | | |
| Page | 4 | | | | | | | | |
| Body exploded view | | | | | | | | | |
| 0013 | 0D6188 | | | | D | | | EJECTEUR SPECIAL DEAN TRS | |
| 0014 | 0KJ001 | | 0D7860 | S | A | | | SCREW; 5X24; INOX; 10 PCS | |
| 0015 | 000000 | | | | | | | | |
| 0016 | 0KQ556 | | | | | | | KEY; 10 PCS | |
| 0017 | 0KJ599 | | | S | A | | | BUSHING; 5 PCS | |
| 0018 | 0D3588 | | | S | | | | HOPPER LID PIVOT; TRS | |
| 0019 | 0KQ665 | | | | A | | | STOP PUSH BUTTON | |
| 0020 | 0D0511 | | | | | | | SCREW; 10 PCS | |
| 0021 | 0D3416 | | | | | | | SCREW F M3X20 STLESS STL SET X10 TRS | |
| 0021 | 0D7383 | | | | | | | NUT; SET 10PCS; M3 | |
| 0022 | 0D2946 | | | S | | | | COMPLETE PROXIMITY DETECTOR CRUDI | |
| 0023 | 0KQ666 | | | | A | | | ON PUSH BUTTON | |
| 0024 | 000000 | | | | | | | | See S10 |
| 0025 | 0KI789 | | | S | | | | SPACER | |
| 0026 | 0U0655 | | | | | | | SCREWCAP LEAD; 3 PCS | |
| 0027 | 0KJ007 | | | S | A | | | BALL BEARING; 6203 2 RS | |
| 0028 | 0D2093 | | | | | | | POULIE RECEPTRICE TRS | |
| 0029 | 0D0545 | | | | | | | SCREW; 10 PCS | |
| 0030 | 0D0588 | | | | | | | NUT; 10 PCS | |
| 0031 | 033596 | | | S | A | | | PIN | |
| 0032 | 0KI590 | | | S | | | | BALL BEARING; 6303 2RS1 | |
| 0033 | 0KI998 | | | S | A | | | RING; 28X40X7MM; FOR TRS; 5 PCS | |
| 0034 | 000000 | | | | | | | | See S8 |
| 0035 | 0D7432 | | | | D | | | COMPONENT SUPPORT | |
| 0036 | 0D0579 | | | | | | | NUT; 10 PCS | |
| 0036 | 0D3415 | | | | D | | | SCREW SHC 5X30 STLESS STL SET X10 | |
| 0036 | 0KQ491 | | | | | | | WASHER; 10 PCS | |
| 0037 | 0D3511 | | | | | | | GROMMET DA8X16X6 MVS (SET X5) | |
| 0038 | 0D7378 | | | | | | | USA CABLE | |
| 00S5 | 0D0117 | | | S | A | | | TRS SHAFT + PIN | |
| 00S6 | 0KJ000 | | | S | | | | DRIVING SHAFT; TRS | |
| 00S7 | 033105 | | | S | | | | PULLEY | |
| 00S8 | 0KI999 | | | S | A | | | FLANGE + SCREW; TRS | |
| 00S9 | 0KQ361 | | | S | A | | | SHAFT ASSEMBLY; TRS | |
| 0S10 | 0U0356 | | | | | | | BODY | |

Vue éclatée Moteur / Motor exploded view / Despiece -
Motor

vsezip.ru

+7(812)987-08-81



Model All

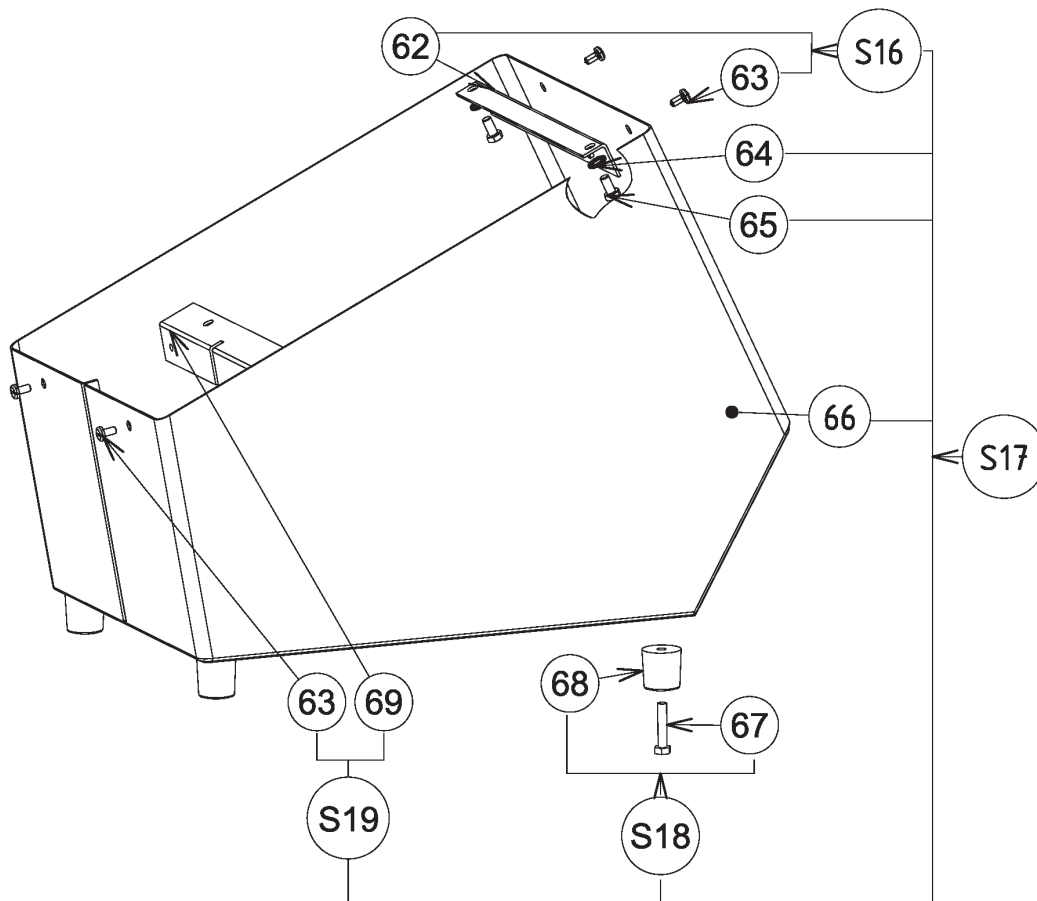
Table SPTR24 Page 6 Motor exploded view

| Pos. | Spare Part | Alias Code | Repl. by | S | Info | Kit | Techn. Bulletin | Description | Notes |
|------|------------|------------|----------|---|------|-----|-----------------|--------------------------------|-------|
| 0040 | 000000 | | | | | | | | |
| 0041 | 000000 | | | | | | | | |
| 0042 | 0D3191 | | | | | | | POULIE MOTRICE 750W TRS | |
| 0043 | 0KQ365 | | | | | | | MOTOR BLOCK | |
| 0044 | 0D6786 | | | | | + | | SCREW; M6X12; SET 10PCS | |
| 0045 | 0D0625 | | | | | | | WASHER; 10 PCS | |
| 0046 | 0D0506 | | | | D | | | SCREW; 10 PCS | |
| 0047 | 0D7384 | | | | | | | POWER BOARD; 115V 60HZ | |
| 0048 | 0D1442 | | 0D3570 | | D | | | TRS/TR21NM/T10 FAN 1PC347 | |
| 0049 | 0D7379 | | | | | | | RELAY; HLR3800 7B3L - 115V | |
| 0050 | 0D7389 | | | | | | | CAPACITOR; 60MF 250V | |
| 0051 | 0H1034 | | | S | A | | | CAPACITOR; 200MF | |
| 0052 | 0D7377 | | | | A | | | ASSEMBLY MOTOR; 115V 60HZ 750W | |
| 0053 | 033106 | | | S | A | | | BELT; POLY V 559 J6 | |
| 0054 | 0D7399 | | 0D8011 | | | | | CONTACTOR; LP1K12015JD | |
| 0055 | 0D7401 | | | S | | | | RESISTOR; 1 OHM 11W | |
| 0056 | 0D0611 | | | | D | | | K55 SCREW TC 4X12 | |
| 0056 | 0D3065 | | | | | | | NUT HU M4 WRAPPED (SET X10) | |
| 0057 | 033984 | | | | D | | | SCREW; 10 PCS | |
| 0057 | 033986 | | | | | + | | SCREW; 10 PCS | |
| 0S13 | 0D7381 | | | | A | | | ASSEMBLY MOTOR; 115V 60HZ | |

Зип Общепит

Vue éclatée Caisson-Caisson inox / Stainless steel casing /
Nomenclatura - Carcasa inox vsezip.ru

+7(812)987-08-81

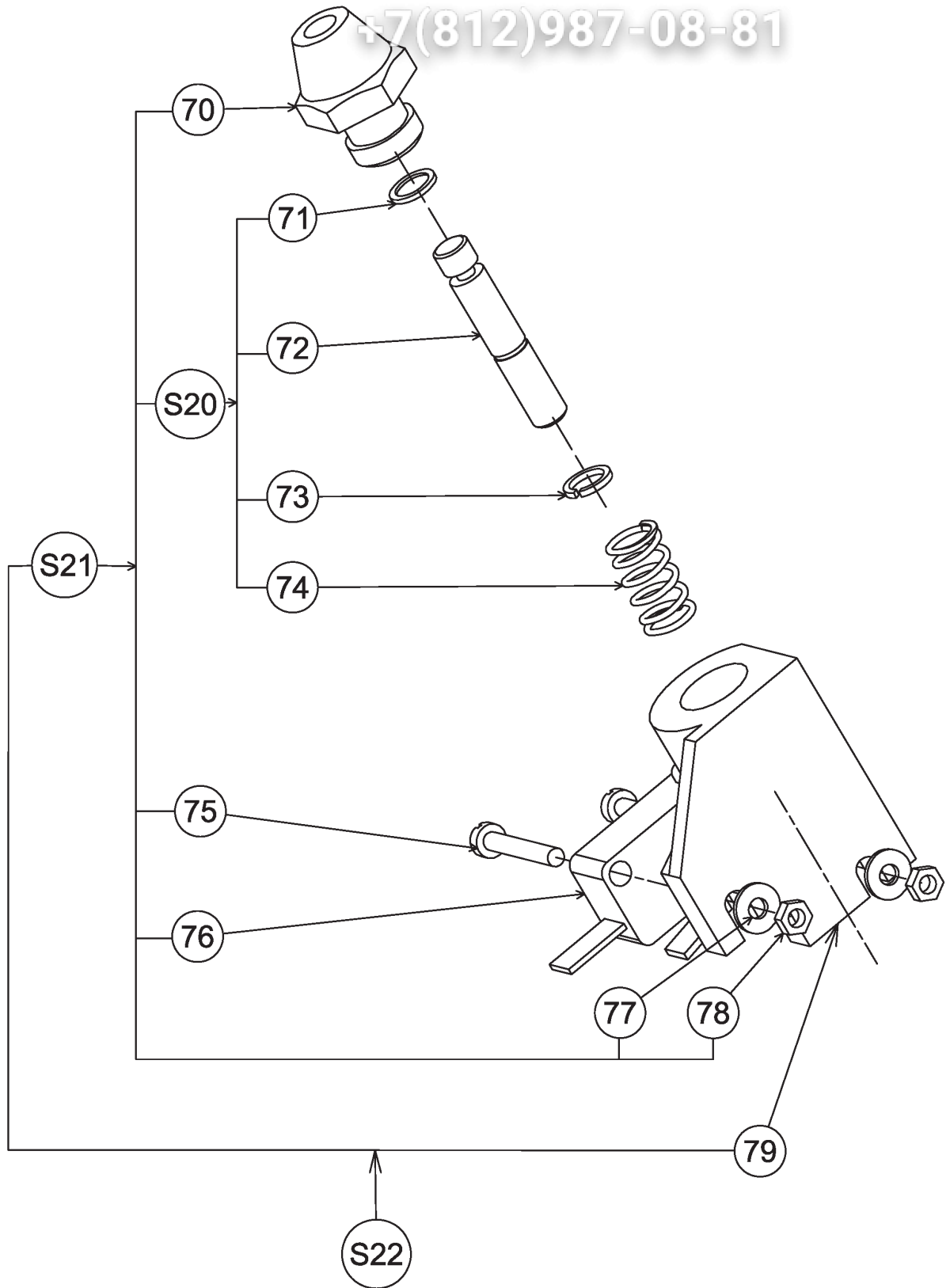


| Pos. | Spare Part | Alias Code | Repl. by | S | Info | Kit | Techn. Bulletin | Description | Notes |
|------|------------|------------|----------|---|------|-----|-----------------|-------------------------------------|---------|
| 0062 | 000000 | | | | | | | | See S16 |
| 0063 | 0KQ527 | | | | | | | SCREW; 10 PCS | |
| 0064 | 0KQ491 | | | | | | | WASHER; 10 PCS | |
| 0065 | 0D0506 | | | | D | | | SCREW; 10 PCS | |
| 0066 | 000000 | | | | | | | | SeeS17 |
| 0067 | 0D3216 | | | | | | | SCREW HM5X25 STLESS STL SET X10 | |
| 0068 | 000000 | | | | | | | | See S18 |
| 0069 | 000000 | | | | | | | | See S19 |
| 0S16 | 0D0813 | | | | | | | REAR SQUARE | |
| 0S17 | 0U0488 | | | | | | | CASING (S/STEEL) | |
| 0S18 | 0D3417 | | | | | | | FOOT ASSY TRS SET X4 | |
| 0S19 | 0D3418 | | | | | | | FRONT BRACKET CASING STLESS STL TRS | |

Зип Общепит

Vue éclatée - Sécurité levier / Lever safety device -
Exploded view / Despiece - Seguridad palanca

+7(812)987-08-81



| Pos. | Spare Part | Alias Code | Repl. by | S | Info | Kit | Techn. Bulletin | Description | Notes |
|------|------------|------------|----------|---|------|-----|-----------------|---|---------|
| 0070 | 0KQ362 | | | | | | | BUSH | |
| 0071 | 0KQ521 | | | | A | | | SEAL; 10 PCS | |
| 0072 | 000000 | | | | | | | | See S20 |
| 0073 | 0KQ485 | | | | D | | | CIRCLIP; 10 PCS | |
| 0074 | 0D3621 | | | | | | | RESSORT TRS | |
| 0075 | 0D0608 | | | | | | | SCREW; 10 PCS | |
| 0076 | 0KQ309 | | | | D | | | SAFETY SWITCH | |
| 0077 | 033986 | | | | | + | | SCREW; 10 PCS | |
| 0078 | 033987 | | | | | + | | SCREW; 10 PCS | |
| 0079 | 000000 | | | | | | | | |
| 0S20 | 0KQ220 | | | S | | | | PLUNGER | |
| 0S21 | 0D3414 | | | | | | | LEVER SAFETY BOX+ MICROSWITCH ASSY TRS | |
| 0S22 | 0KI996 | | | | | | | SAFETY SWITCH | |