


Replacement Parts Diagram Model HBB250S-CE (Series A-F)

PROPRIETARY RIGHTS NOTICE This document and all information contained within it is the property of Hamilton Beach Brands, Inc. (HBB). It is confidential and proprietary and has been provided to you for a limited purpose. It must be returned or destroyed upon request. Disclosure, reproduction or use of this document and any information contained within it, in full or in part, for any purpose is forbidden without the prior written consent of HBB. No photographs may be taken of any article fabricated or assembled from this document without the prior written consent of HBB.



 Hamilton Beach 4421 Waterfront Drive Glen Allen, VA 23060	Revision Description:		Added Jar Sensor and part number			
	Request Number:	HQE-8982	Revision Date:	1/27/10	Approved by:	HQE-8982
	Issue Code(s):	CS, SP	Page:	1 of 4	Document #:	510020300
					Rev:	H

Replacement Parts Diagram Model HBB250S-CE (Series A-F)

PROPRIETARY RIGHTS NOTICE This document and all information contained within it is the property of Hamilton Beach Brands, Inc. (HBB). It is confidential and proprietary and has been provided to you for a limited purpose. It must be returned or destroyed upon request. Disclosure, reproduction or use of this document and any information contained within it, in full or in part, for any purpose is forbidden without the prior written consent of HBB. No photographs may be taken of any article fabricated or assembled from this document without the prior written consent of HBB.

+7(812)987-08-81

Jar Sensor (Only)
Qty of 1
990084400



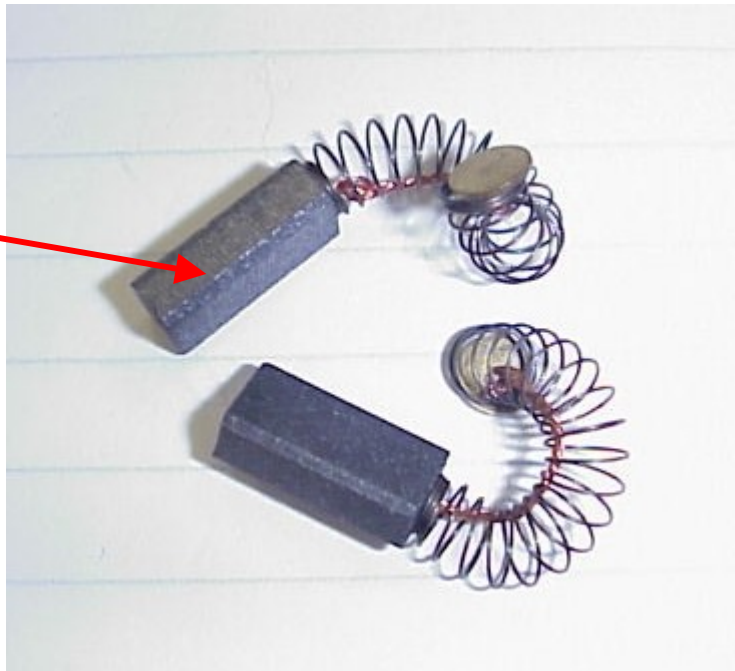
RFI Board with Sensor
990064600


Cordset Socket
990064800



Hamilton Beach
Commercial Badge
990092700

Brush Motor Kit
990075100



 4421 Waterfront Drive Glen Allen, VA 23060	Revision Description:		Added Jar Sensor and part number					
	Request Number:	HQE-8982	Revision Date:	1/27/10	Approved by:	HQE-8982		
	Issue Code(s):	CS, SP	Page:	2 of 4	Document #:	510020300	Rev:	H

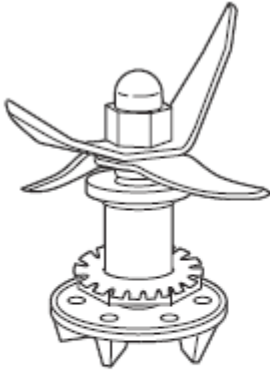
Replacement Parts Diagram

Model HBB250S-CE (Series A-F)

PROPRIETARY RIGHTS NOTICE This document and all information contained within it is the property of Hamilton Beach Brands, Inc. (HBB). It is confidential and proprietary and has been provided to you for a limited purpose. It must be returned or destroyed upon request. Disclosure, reproduction or use of this document and any information contained within it, in full or in part, for any purpose is forbidden without the prior written consent of HBB. No photographs may be taken of any article fabricated or assembled from this document without the prior written consent of HBB.

Cutter Assembly Replacement Instructions

+7(812)987-08-81



**Cutter Repair Kit
for Rio Blenders**



⚠ WARNING

Cut Hazard
Handle cutter
assembly with
care.
Failure to follow
these instructions
can result in cuts
or other injuries.

**Removing the
old cutter assembly**

Hold the blades with a cloth. Unscrew the clutch counterclockwise.

Remove the clutch and felt washer.

Remove the shaft and blade assembly

Use a flathead screwdriver to flatten the tabs on the tab washer.

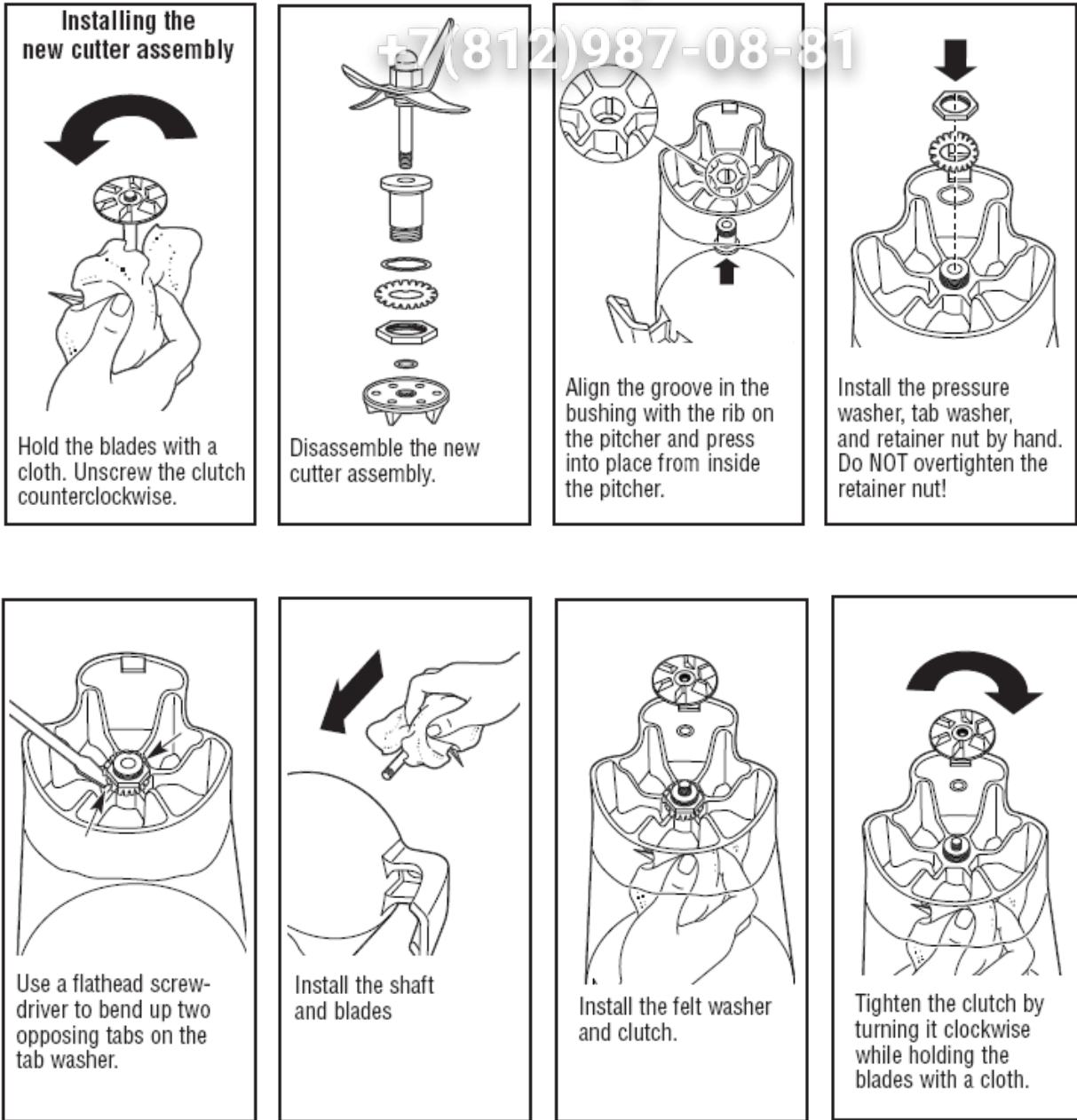
Remove the nut by turning counterclockwise by hand. Then remove the tab washer and pressure washer.

Remove bushing.

 4421 Waterfront Drive Glen Allen, VA 23060	Revision Description: Added Jar Sensor and part number		Request Number: HQE-8982		Revision Date: 1/27/10		Approved by: HQE-8982	
	Issue Code(s): CS, SP		Page: 3 of 4		Document #: 510020300		Rev: H	

Replacement Parts Diagram Model HBB250S-CE (Series A-F)

PROPRIETARY RIGHTS NOTICE This document and all information contained within it is the property of Hamilton Beach Brands, Inc. (HBB). It is confidential and proprietary and has been provided to you for a limited purpose. It must be returned or destroyed upon request. Disclosure, reproduction or use of this document and any information contained within it, in full or in part, for any purpose is forbidden without the prior written consent of HBB. No photographs may be taken of any article fabricated or assembled from this document without the prior written consent of HBB.



<p>Hamilton Beach 4421 Waterfront Drive Glen Allen, VA 23060</p>	Revision Description: Added Jar Sensor and part number		Revision Date: 1/27/10		Approved by: HQE-8982	
	Request Number: HQE-8982	Page: 4 of 4		Document #: 510020300		Rev: H
	Issue Code(s): CS, SP					