

BR9/BR9M-4...
BR9M-6... SERIE 900
BR9SB-4...

Зип Общепит
 vsezip.ru



BRASIERE ROVESCIBILI ELETTRICHE
ELECTRIC HEATED TILTING BRATT PANS
SAUTEUSES BASCULANTES ELECTRIQUES
KIPPBRATPFANNEN ELEKTRISCH BEHEIZT
SARTENES VOLCABLES ELECTRICAS

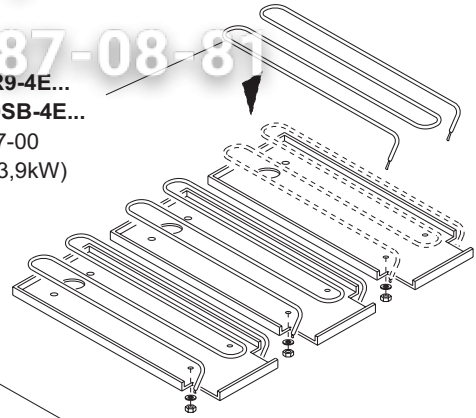
93190-60 BR9-4E
 93191-60 BR9-4EI

93195-60 BR9M-4E
 93196-60 BR9M-4EI

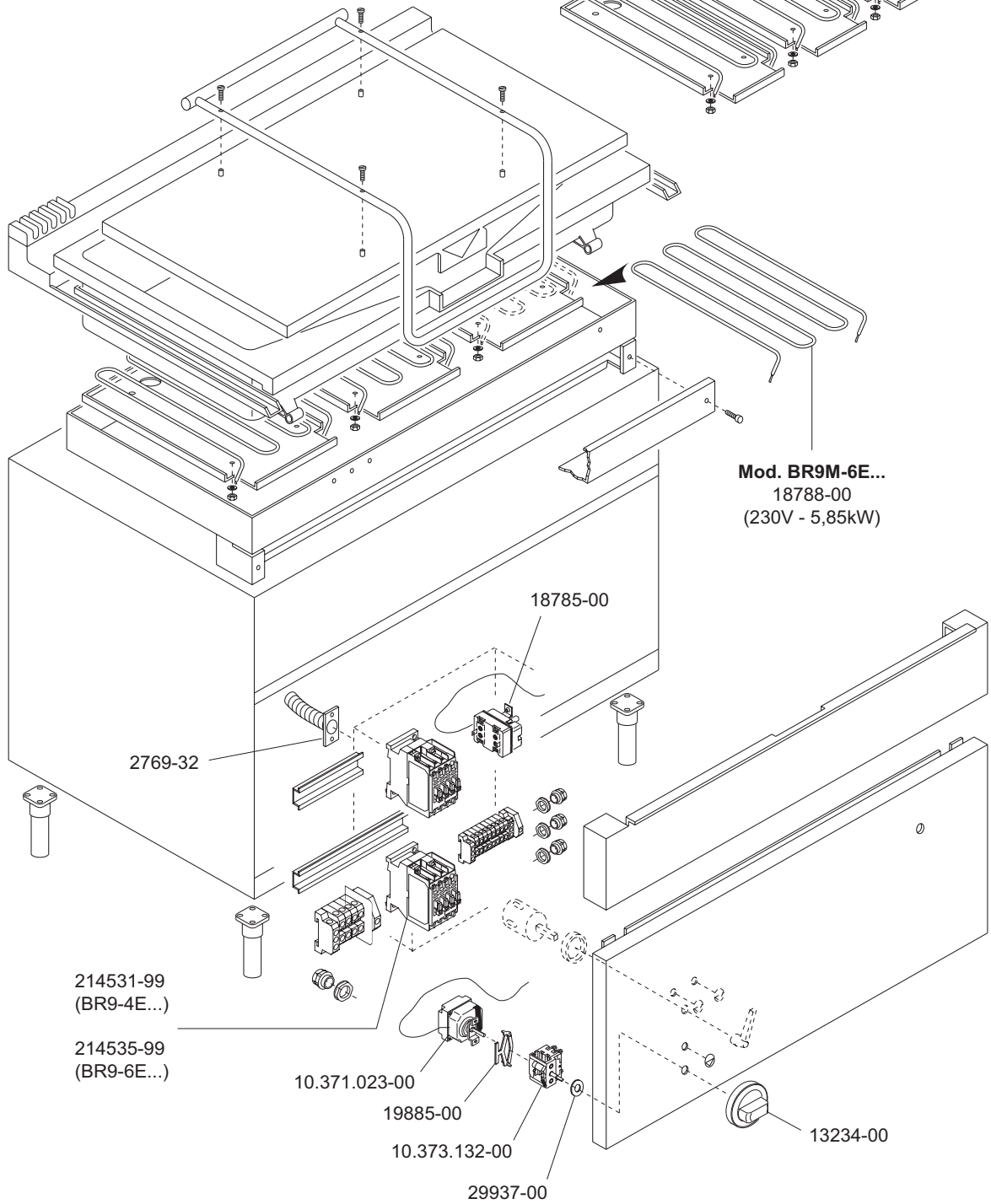
93197-60 BR9M-6E
 93198-60 BR9M-6EI

+7(812)987-08-81

Mod. BR9-4E...
 Mod. BR9SB-4E...
 18787-00
 (230V - 3,9kW)



Mod. BR9M-6E...
 18788-00
 (230V - 5,85kW)



214531-99
 (BR9-4E...)

214535-99
 (BR9-6E...)

10.371.023-00

19885-00

10.373.132-00

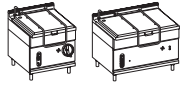
29937-00

18785-00

2769-32

13234-00

| | | | | | | |
|---|-----------------------|------------|-----------------------------|--------------------|-----|------------|
|  MARENO INDUSTRIE ALI spa Mareno di Piave (TV) | ELABORATO: | APPROVATO: | GRUPPO: | DENOMINAZIONE: | | |
| | <i>Platt</i> | | Serie 900 | Impianto elettrico | | |
| | DATA: | DATA: | PARTICOLARE: | REV. N. | DEL | DISEGNO N. |
| | 10 Dic 96 | 10 Dic 96 | Disegno esploso per ricambi | ▼ | ▼ | ▼ |
| SOST. DIS. | Z00 - 9612.3.9.41.BRE | | Z00 - 9612.3.9.41.BRE | | | |



BR9/BR9M-4...
BR9M-6... *SERIE 900*
BR9SB-4...

Зип Общепит



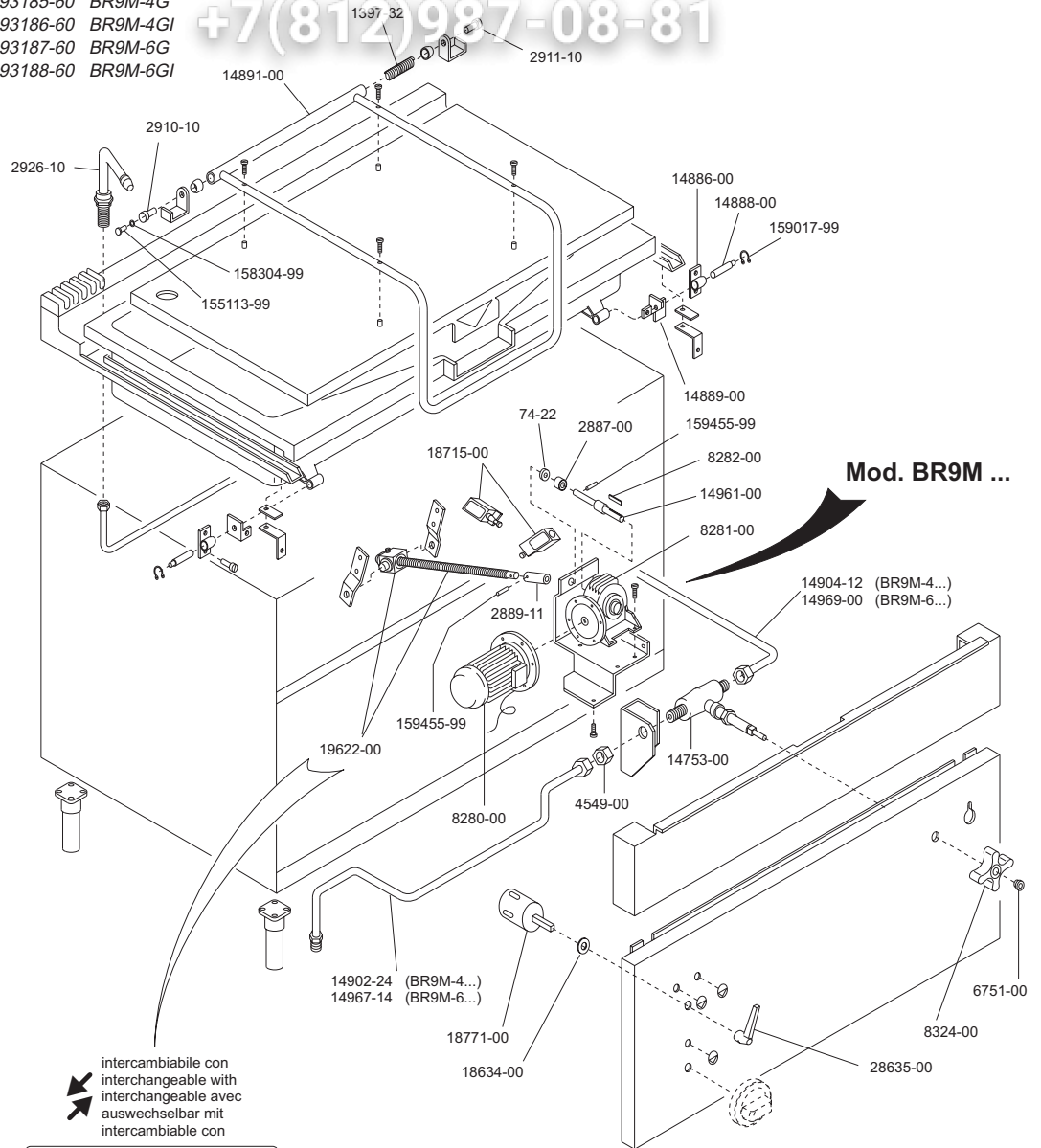
vsezip.ru

BRASIERE ROVESCIBILI
TILTING BRATT PANS
SAUTEUSES BASCULANTES
KIPPBRATPFANNEN
SARTENES VOLCABLES

93190-60 BR9-4E
 93191-60 BR9-4EI
 93195-60 BR9M-4E
 93196-60 BR9M-4EI
 93197-60 BR9M-6E
 93198-60 BR9M-6EI


93180-60 BR9-4G
 93181-60 BR9-4GI
 93185-60 BR9M-4G
 93186-60 BR9M-4GI
 93187-60 BR9M-6G
 93188-60 BR9M-6GI

+7(812)987-08-81



Mod. BR9M ...

Mod. BR9-4E, ... 4EI

| | | | | | | |
|--|-----------------------|------------|------------------------------------|---|-----|------------|
|  MARENO INDUSTRIE ALI spa Mareno di Piave (TV) | ELABORATO: | APPROVATO: | GRUPPO: | DENOMINAZIONE: | | |
| | <i>Platt</i> | | <i>Serie 900</i> | <i>Mobile e sistemi movimento vasca</i> | | |
| | DATA: | DATA: | PARTICOLARE: | REV. N. | DEL | DISEGNO N. |
| | 10 Dic 96 | 10 Dic 96 | <i>Disegno esploso per ricambi</i> | ▼ | ▼ | ▼ |
| SOST. DIS. | Z00 - 9612.3.9.42.BRM | | Z00 - 9612.3.9.42.BRM | | | |



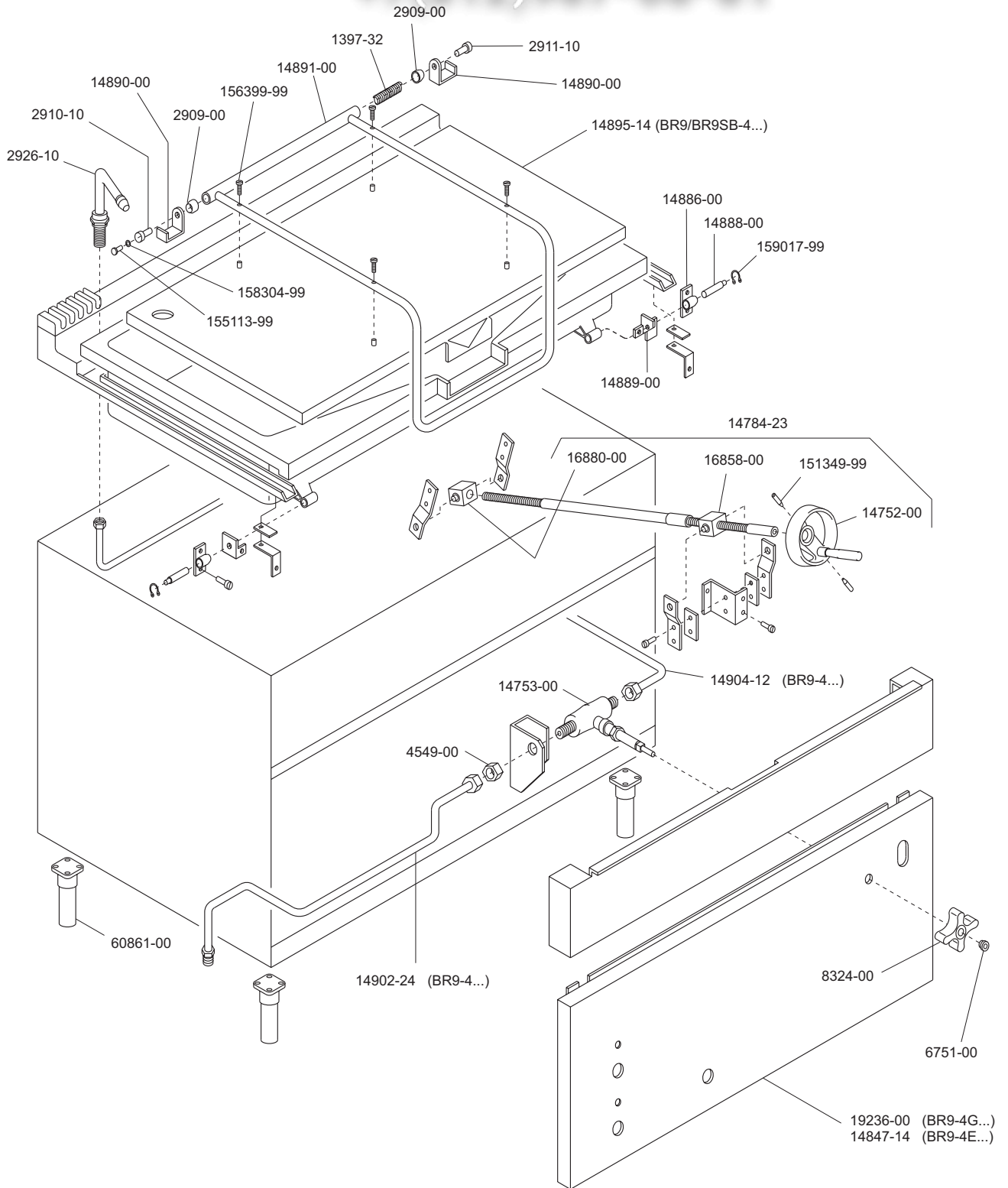
BR9-4...
BR9SB-4...


SERIE 900

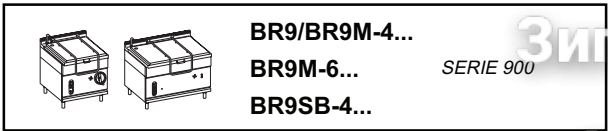
Зип Общежитие
vsezip.ru

BRASIERE ROVESCIBILI A GAS ED ELETTRICHE
GAS AND ELECTRIC HEATED TILTING BRATT PANS
SAUTEUSES BASCULANTES A GAZ ET ELECTRIQUES
KIPPBRATPFANNEN GAS UND ELEKTRISCH BEHEIZT
CARTENES VOLCABLES A GAS Y ELECTRICAS

+7(812)987-08-81



| | | | | | | |
|---|-----------------------|------------|-----------------------------|--|-----|------------|
|  MARENO INDUSTRIE ALI spa Mareno di Piave (TV) | ELABORATO: | APPROVATO: | GRUPPO: | DENOMINAZIONE: | | |
| | <i>Plum</i> | | Serie 900 | Mobile e sistema di sollevamento manuale | | |
| | DATA: | DATA: | PARTICOLARE: | REV. N. | DEL | DISEGNO N. |
| | 10 Ott 96 | 10 Ott 96 | Disegno esploso per ricambi | ▼ | ▼ | ▼ |
| SOST. DIS. | Z01 - 9610.3.9.13.BRV | | Z01 - 9610.3.9.13.BRV | | | |



BR9/BR9M-4...
BR9M-6... SERIE 900
BR9SB-4...

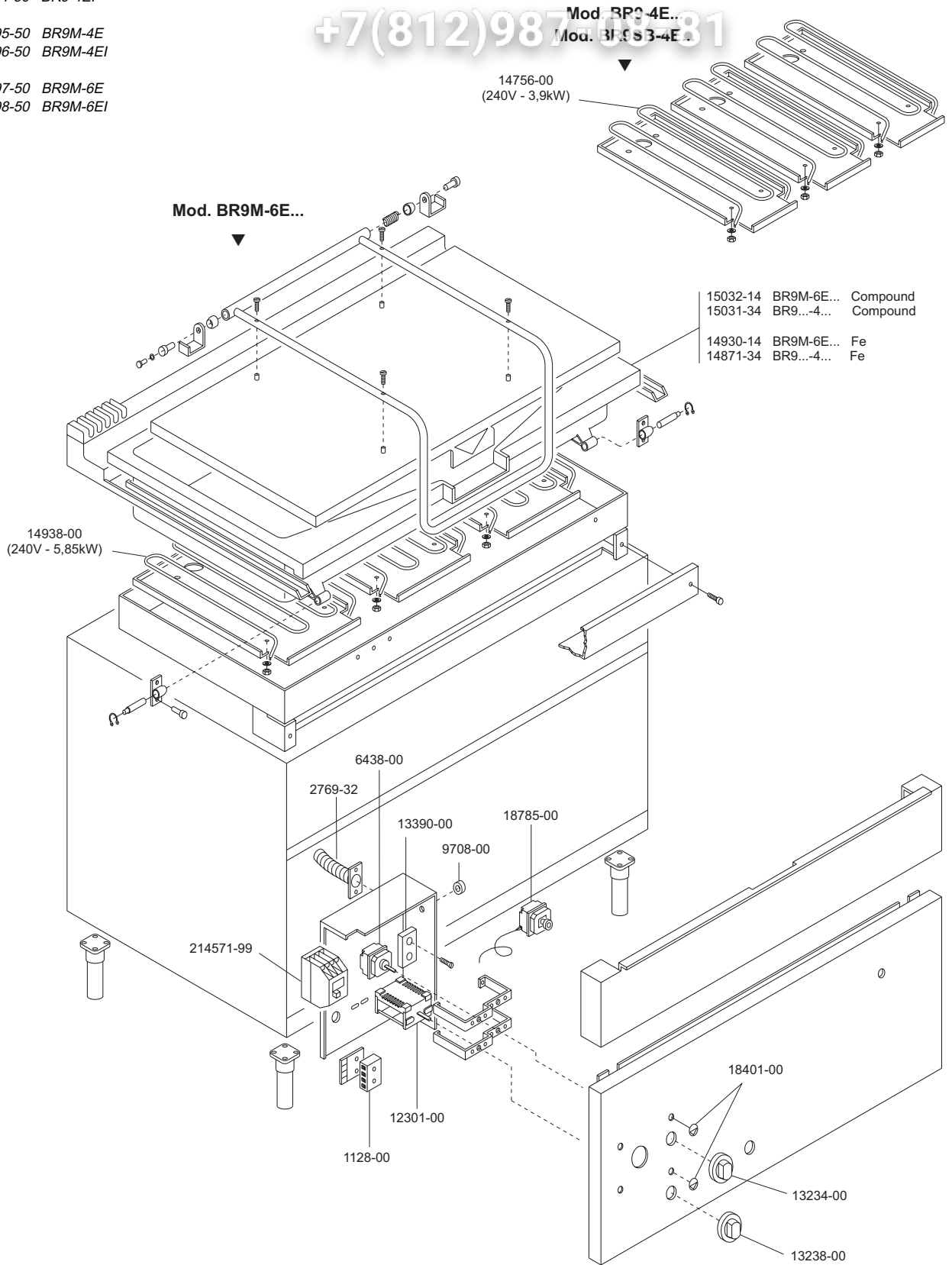
BRASIERE ROVESCIBILI ELETTRICHE
ELECTRIC HEATED TILTING BRATT PANS
SAUTEUSES BASCULANTES ELECTRIQUES
KIPPBRATPFANNEN ELEKTRISCH BEHEIZT
SAETENES VOLCABLES ELECTRICAS

93190-50 BR9-4E
 93191-50 BR9-4EI

93195-50 BR9M-4E
 93196-50 BR9M-4EI

93197-50 BR9M-6E
 93198-50 BR9M-6EI

vsezip.ru
 +7(812)987-0881



| | | | | | |
|-----------------|-----------------------|-----------------------------|---------------------------------------|-----|------------|
| ELABORATO: | APPROVATO: | GRUPPO: | DENOMINAZIONE: | | |
| <i>Plinelli</i> | | Serie 900 | Impianto elettrico | | |
| DATA: | DATA: | PARTICOLARE: | REV. N. | DEL | DISEGNO N. |
| 10 Dic 96 | 10 Dic 96 | Disegno esploso per ricambi | ▼ | ▼ | ▼ |
| SOST. DIS. | Z01 - 9612.3.9.16.BRE | | Z 0 1 - 9 6 1 2 . 3 . 9 . 1 6 . B R E | | |