

Зип Общепит

vsezip.ru

DESPIECE TECNICO

+7(812)987-08-81

Cocedor multifunción eléctrico
Electric bratt pan
Sauteuse électrique
Elektro bräter
Brasiera elettrica
Cozedor multifunções elétrico

GAMA SNACK

Modelos:

CMF6-05

Junio 2009 June

Revisado Marzo 2014 Revised

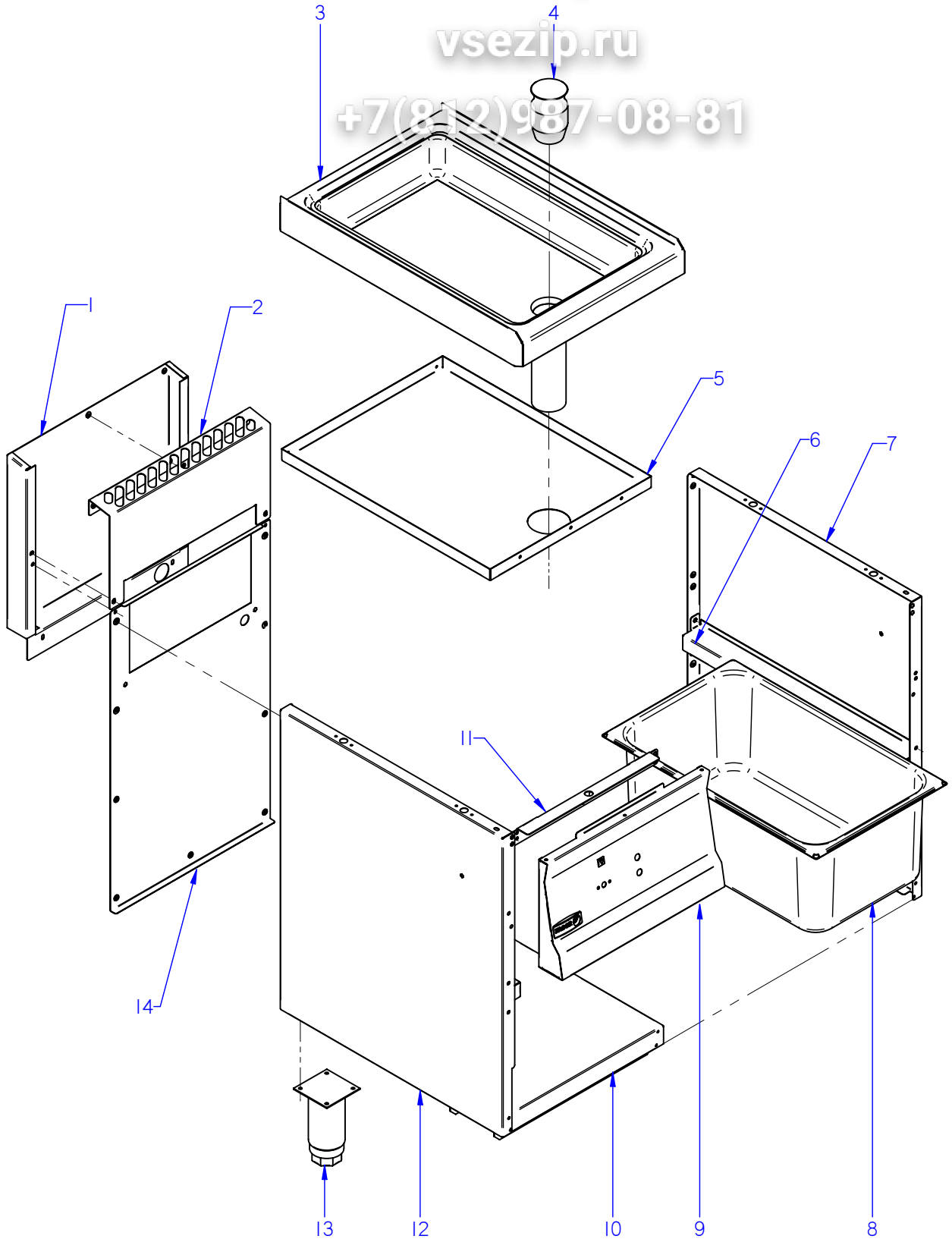
FAGOR 

F A G O R I N D U S T R I A L

Зип Общепит

vsezip.ru

+7(812)987-08-81



ITEM MARCADO EN COLOR = REPUESTO RECOMENDADO
COLOURED ITEM = RECOMMENDED SPARE PART

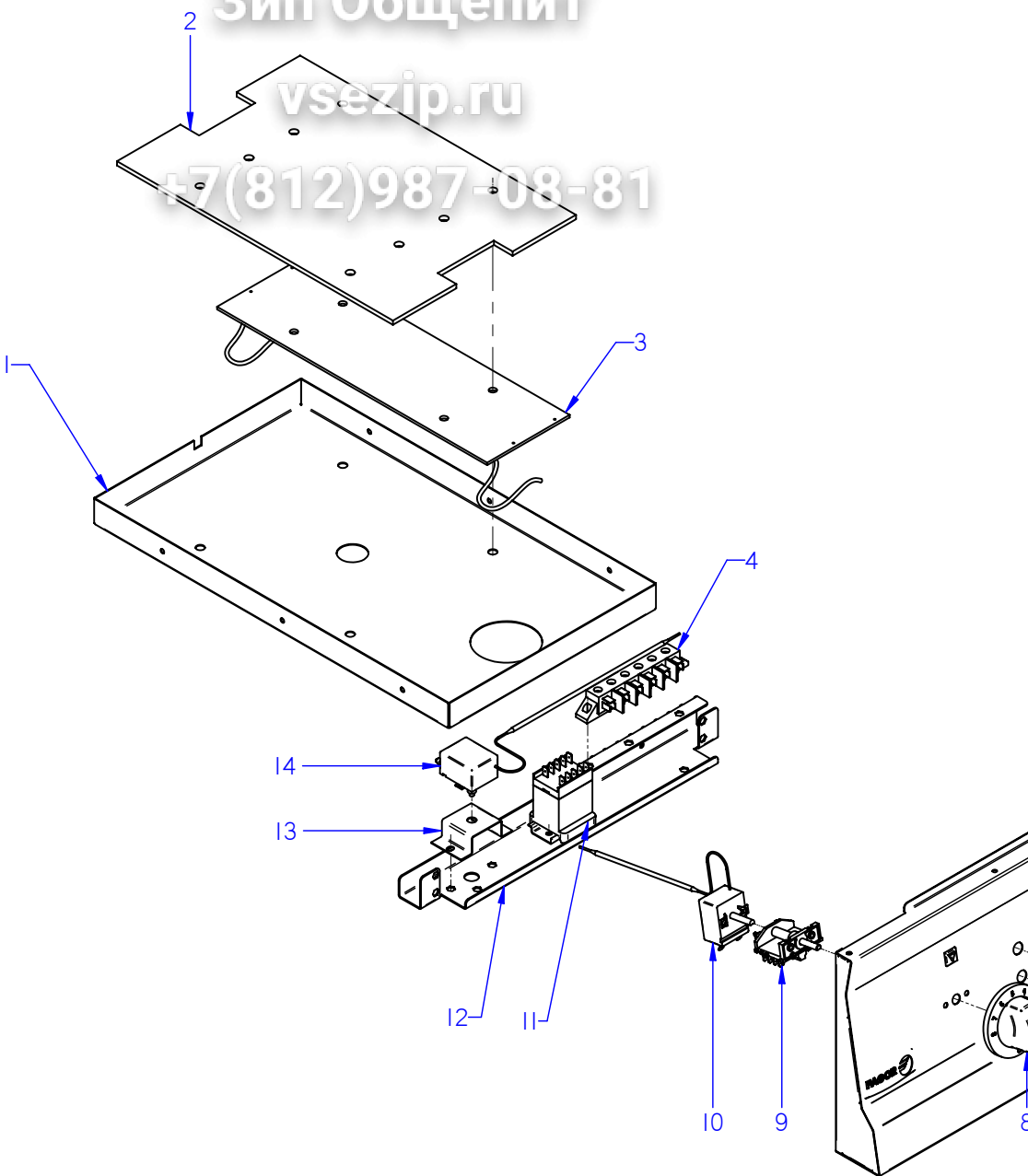
N plano	Firma	Fecha	Aparato	MUEBLE	Lamina	Fagor Industrial S.Coop. FAGOR
C-2401	<i>[Signature]</i>	2009-06	COCEDOR MULTIFUNCION CMF6-05		1	Oñate

MOD.		COCEDOR MULTIFUNCION ELECTRIC BRATT PAN		ZONA	MUEBLE / UNIT			
ITEM	CODIGO	DENOMINACION	TEXTO	CMF6-05				
1	J302808000	PROT. CHIMENEA POST.	PROTECTION CHIMEMEY POS.	1				
	Q419005000	REMACHE 4X8 ALMG3 / ALUMINIO	RIVET 4X8 ALMG3 / ALUMINIUM	2				
2	J142810000	PROTECCION CHIMENEA ANT. 400	PROTECTION CHIMENEY ANT	1				
2	J142829000	PROTECCION CHIMENEA FREID.	PROTECTION CHIMENEY	1				
	Q012031000	TORNILLO EXAGONAL M5x10 A304	HEXAGONAL BOLT M5x10 A304	4				
	Q302022000	ARANDELA 16x6x1,2 A304	WASHER 16x6x1.2 A304	4				
	Q221342000	REMACHE EXAGONAL M5	HEXAGONAL RIVET M5	3				
3	J305403000	ENCIMERA MP6-05 COMPL.	TOP MP6-05 COMPL.	1				
	X012612000	PITON CIERRE	LOCK SPIKE	2				
	Z442919000	PITON CIERRE	LOCK SPIKE	2				
	Q221342000	REMACHE EXAGONAL M5	HEXAGONAL RIVET M5	2				
4	12110681	TAPON COCEDOR MULTIFUNCION	ELECTRIC BRATT PAN CAP	1				
5	J302604000	BASE INFERIOR 400 MULTIPLA	LOWER BASE 400 MULTIPLA	1				
	Q419005000	REMACHE 4x8 ALMG3 / ALUMINIO	RIVET 4X8 ALMG3 / ALUMINIUM	6				
6	J302807000	SUPORTE CUBA MULTIPLA	SUPPORT CUBA MULTIPLA	2				
	Q221342000	REMACHE EXAGONAL M5	HEXAGONAL RIVET M5	4				
	Q152004000	TORNIL. APLASTADO M5X13 A 304	FLAT HEADED SCREW M5x13 A 3	4				
7	J022802000	PANEL LATERAL DCHO CG6-41	LATERAL RIGHT RANGE CG6-41	1				
7	J022816000	PANEL LATERAL DCHO CG6-41	LATERAL RIGHT RANGE CG6-41	1				
	Q419005000	REMACHE 4X8 ALMG3 / ALUMINIO	RIVET 4X8 ALMG3 / ALUMINIUM	4				
	X010503000	CIERRE MUELLE	LOCK SPRING	2				
	Z442918000	CLIP CIERRE	LOCK SPRING	2				
	Q419007000	REMACHE TUBULAR C/V D3.2X6	TUBULAR RIVET C/V D3.2X6	4				
	Q221342000	REMACHE EXAGONAL M5	HEXAGONAL RIVET M5	1				
8	J305422000	CUBA MULTIPLA MP6-05	PAN MULTIPLA MP6-05	1				
9	J302803000	PORTAMANDOS COMPL. MP6-05	CONTROL HOLDER MP6-05	1				
	U022836000	ESCUDO FAGOR	FAGOR EMBLEM	1				
	Q221023000	CLIP SUJECIÓN RAPIDA Ø5	RAPID CONNECT CLIP Ø5	2				
	Q419005000	REMACHE 4x8 ALMG3 / ALUMINIO	RIVET 4X8 ALMG3 / ALUMINIUM	6				
	Q012031000	TORNILLO EXAGONAL M5x10 A304	HEXAGONAL BOLT M5x10 A304	2				
	Q302022000	ARANDELA 16x6x1,2 A304	WASHER 16x6x1.2 A304	2				

Зип Общепит

vsezip.ru

+7(812)987-08-81



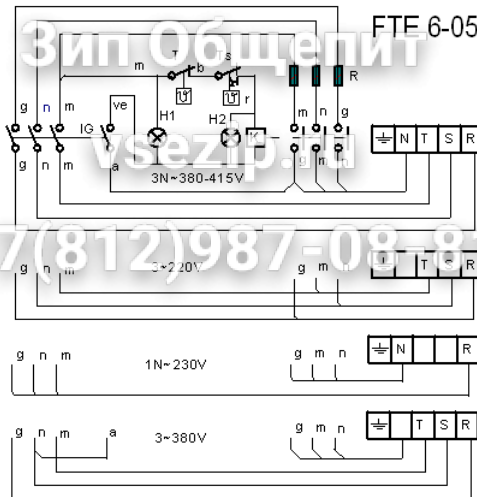
ITEM MARCADO EN COLOR = REPUESTO RECOMENDADO
COLOURED ITEM = RECOMMENDED SPARE PART

N plano	Firma	Fecha	Aparato	CONJUNTO FUNCIONAL	Lamina	Fagor Industrial S. Coop. FAGOR 
C-2402		2009-06	COSEADOR MULTIFUNCION CMF6-05		2	Ortfe

MOD.	COCEDOR MULTIFUNCION ELECTRIC BRATT PAN	ZCNA	CONJUNTO FUNCIONAL / FUNCTIONAL UNIT
-------------	--	------	---

ITEM	CODIGO	DENOMINACION	TEXTO	CMF6-05				
1	J305405000	TAPA RESISTENCIAS MULTIPLA	TAPA RESISRENCES MULTIPLA	1				
	Q162040000	TUERCA EXAGONAL M6	HEXAGONAL NUT M6	4				
	Q232040000	ARANDELA A6	WASHER A6	4				
2	J305404000	ALOJAMIENTO RESISTENCIAS	RESISTENCES BILLET	1				
	Q162040000	TUERCA EXAGONAL M6	HEXAGONAL NUT M6	4				
	Q232040000	ARANDELA A6	WASHER A6	4				
3	J303001000	RESISTENCIAS 1600W 230v	RESISTENC 1600W 230v	2				
4	R253044000	REGLETA AUXILIAR FV-122	AUXILIARY TERMINAL STRIP FV-	1				
	Q152004000	TORNIL. APLASTADO M5X13 A 304	FLAT HEADED SCREW M5x13 A 3	2				
5	R693055000	PILOTO VERDE 41227000C7	GREEN PILOT 41227000C7	1				
5	12047390	PILOTO VERDE 230V AC 8KW 16MM	GREEN PILOT 230V AC 8KW 16M	1				
6	R693056000	PILOTO AMBAR 41227000A4	AMBER PILOT 41227000A4	1				
6	12024669	PILOTO AMBAR Ø18	AMBER PILOT Ø18	1				
7	J302803000	PORTAMANDOS COMPL. MP6-05	CONTROL HOLDER MP6-05	1				
8	X482101000	BOTON DE MANDO Ø6 G-750Q	CONTROL Ø6 G-750Q	1				
9	X163007000	CONMUT. ACOPLER TERMOSTATO	THERMOSTAT CONNECTION SW	1				
	Q151320000	TORNILLO ALOMADO M4x6 H.ZINC.	CURVED SCREW M4x6 H,ZINC.	2				
10	X153000000	TERMOSTATO 50-310 C	THERMOSTAT 50-310 C	1				
11	Z213007000	CONTACTOR 3F2010-3AL2	CONTACTOR 3F2010-3AL2	1				
	Z123018000	GUIA CONTACTOR L-55	CONTACTOR GUIDE L-55	1				
	Q419005000	REMACHE 4x8 ALMG3 / ALUMINIO	RIVET 4X8 ALMG3 / ALUMINIUM	2				
12	J302603000	FRONTAL SUPERIOR MULTIPLA	FRONT SUPPORT MULTIPLA	1				
13	X152661000	SOPORTE LIMITADOR	LIMITER SUPPORT	1				
	Q221341000	REMACHE EXAGONAL M4	HEXAGONAL RIVET M4	2				
	Q151320000	TOR. ALOMADO M4X6 H.ZINCADO	CURVED SCREW M4X6 H. ZINC	2				
14	R612103000	TERMOSTATO LIMITADOR	THERMOSTAT LIMITER	1				


FTE 6-05, FTE 6-10, FE 6-05, CMF 6-05



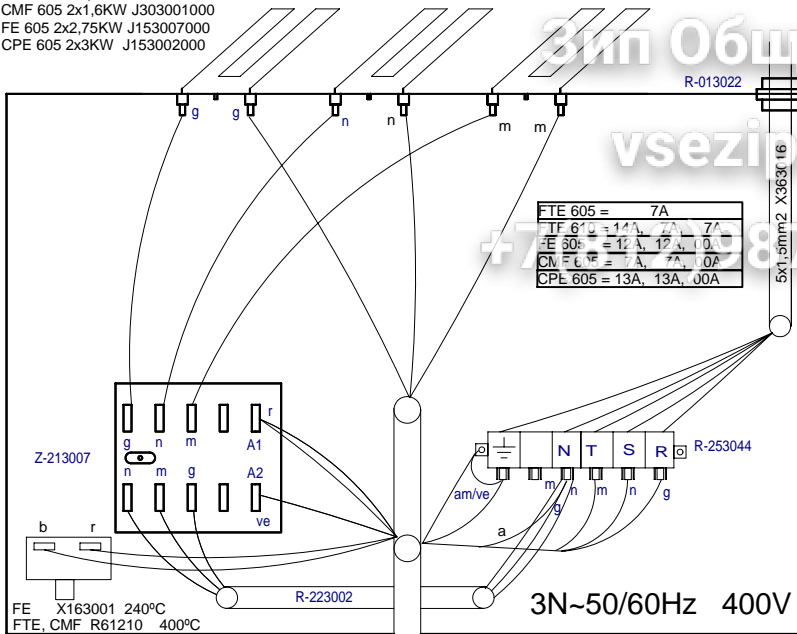
IG : Interruptor general / Main switch
 H1 : Lámpara funcionamiento / Operating lamp
 H2 : Lámpara calentamiento / Heating Lamp
 K : Contactor de calentamiento / heating contactor
 R : Resistencia de Calentamiento / Resistance heating
 T : Termostato / thermostat
 Ts : Termostato de seguridad / Hi-limit thermostat

r = rojo / red
 m = marrón / brown
 g = gris / grey
 n = negro / black
 a = azul / blue
 b = blanco / white
 am / ve = amarillo-verde / Yellow-green

J153003000

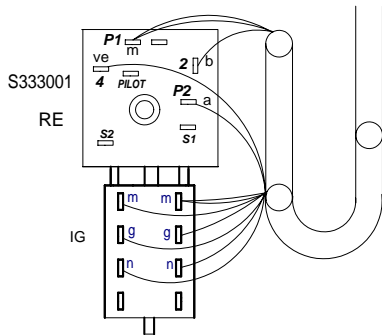
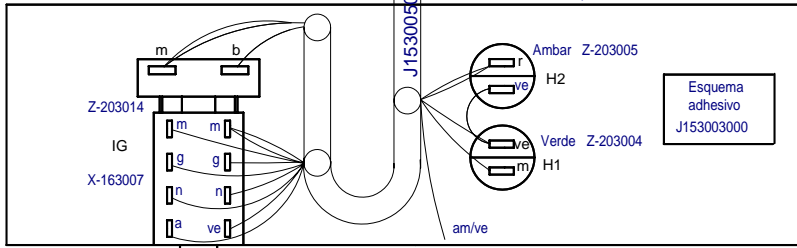
-	Theoretical diagram:FE 605, FTE 605, FTE 610, CMF 605		J153003000		
Zk./Nº	Pieza	Cant.	Material/Material	Klas. zk/Nº Clas.	Gainazal akabera/Tra
Zk./Nº	Aldaketa/Modificaciones		Nork proposatua/Propuesta de	Data/Fecha	Perdoi orokorr Tolerancias gene
-			-	-	
-			-	-	< 5 ± 0.2
-			-	-	5 ± 25 ± 0.4
-			-	-	25 ± 50 ± 0.6
-			-	-	50 ± 100 ± 0.6
Marratzua/Dibujado	Sinadura/Firma	Data/Fecha	 Fagor Industrial, Koop. Elk., Mugatua		Gainazal perdo Mecanizado supe
Proiektatua/Proyectado	e.carrascal	2008-10-23			
Egiaztatua/Comprobado	<i>[Signature]</i>	2008-10-23			
Eskala/E scale	COOKING				Plano Zk./Plano HB-80489
Plano hau ezin daiteke erabili, ez berrizatu, gure baimenik gabe.					- Zk. c - Zk. g

FTE 610 4x1,6KW J303001000
 FTE 605 3x1,6KW J303001000
 CMF 605 2x1,6KW J303001000
 FE 605 2x2,75KW J153007000
 CPE 605 2x3KW J153002000

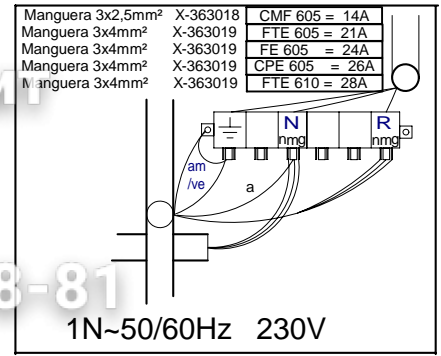


FE 610 x2

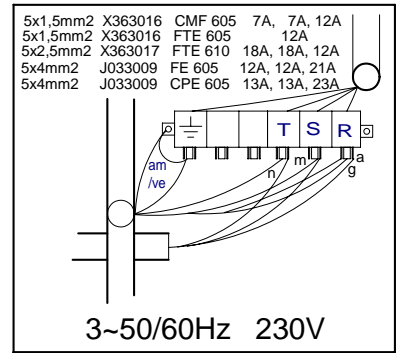
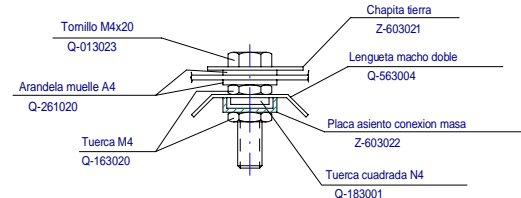
FTE 605 FT610,
 FE 605, CMF 605



CPE 605



1N~50/60Hz 230V



3~50/60Hz 230V

Plano Montaje		
Zk./Nº	Pieza	
Zk./Nº	Aldaketa/Modificaciones	
-	-	-
-	-	-
-	-	-
-	-	-
Sinadura/Firma		Data/Fe
Marratzua/Dibujado		M.Maillo 2009-05
Proiektatua/Proyectado		M.Maillo 2009-05
Egiaztatua/Comprobado		I.Alberdi 2009-05
Eskala/Escala		
Plano hau ezin daiteke er		