



ELECTROLUXPROFESSIONAL

ModularPlatform

Viale Treviso, 15
33170 Pordenone - Italy
Fax: +390434-380577

SPARE PARTS CATALOGUE
CATALOGO PARTI DI RICAMBIO

**GRIGLIA GAS ED ELETTRICA N900
GAS AND ELECTRIC GRILL N900**

| PNC | Model | Ref. | Page | Notes |
|------------|--------------|-------------|-------------|------------------------|
| 200 241 | KGR/G1 | a | 1 - 6 | Gas grill 400 |
| 200 242 | KGR/G2 | b | 1 - 6 | Gas grill 800 |
| 200 249 | KGR/T1 | c | 1 - 6 | Gas grill Town Gas 400 |
| 200 250 | KGR/T2 | d | 1 - 6 | Gas grill Town Gas 800 |
| 200 243 | KGR/E1 | e | 1 - 6 | Electric grill 400 |
| 200 244 | KGR/E2 | f | 1 - 6 | Electric grill 800 |

Pag. 1 - 2 - 3
Pag. 4 - 5 - 6

Index
Frame and components
Spare parts list

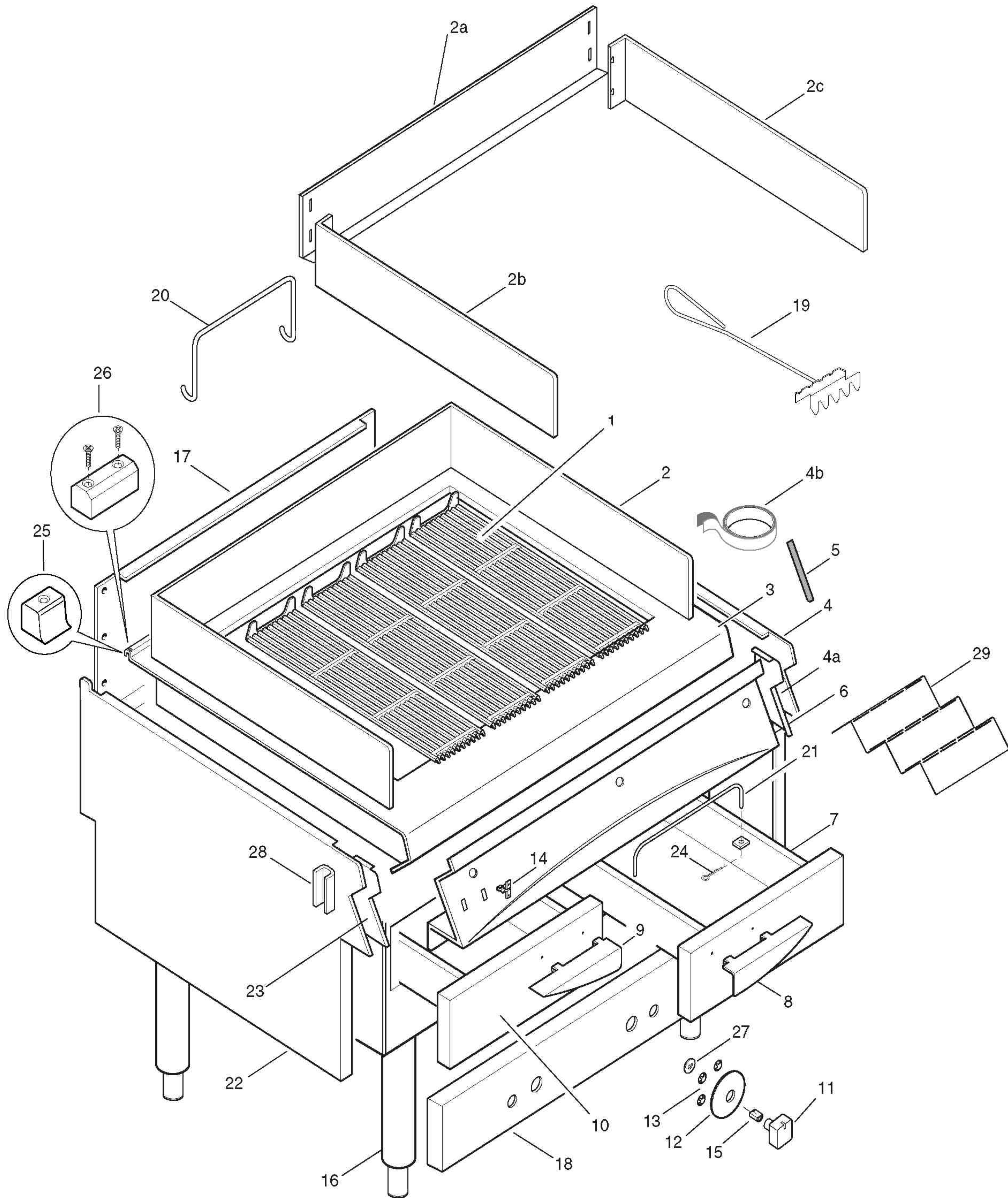
Indice
Struttura e componenti
Lista ricambi

Brand / Marchio : Zanussi
Factory code: 9PDX

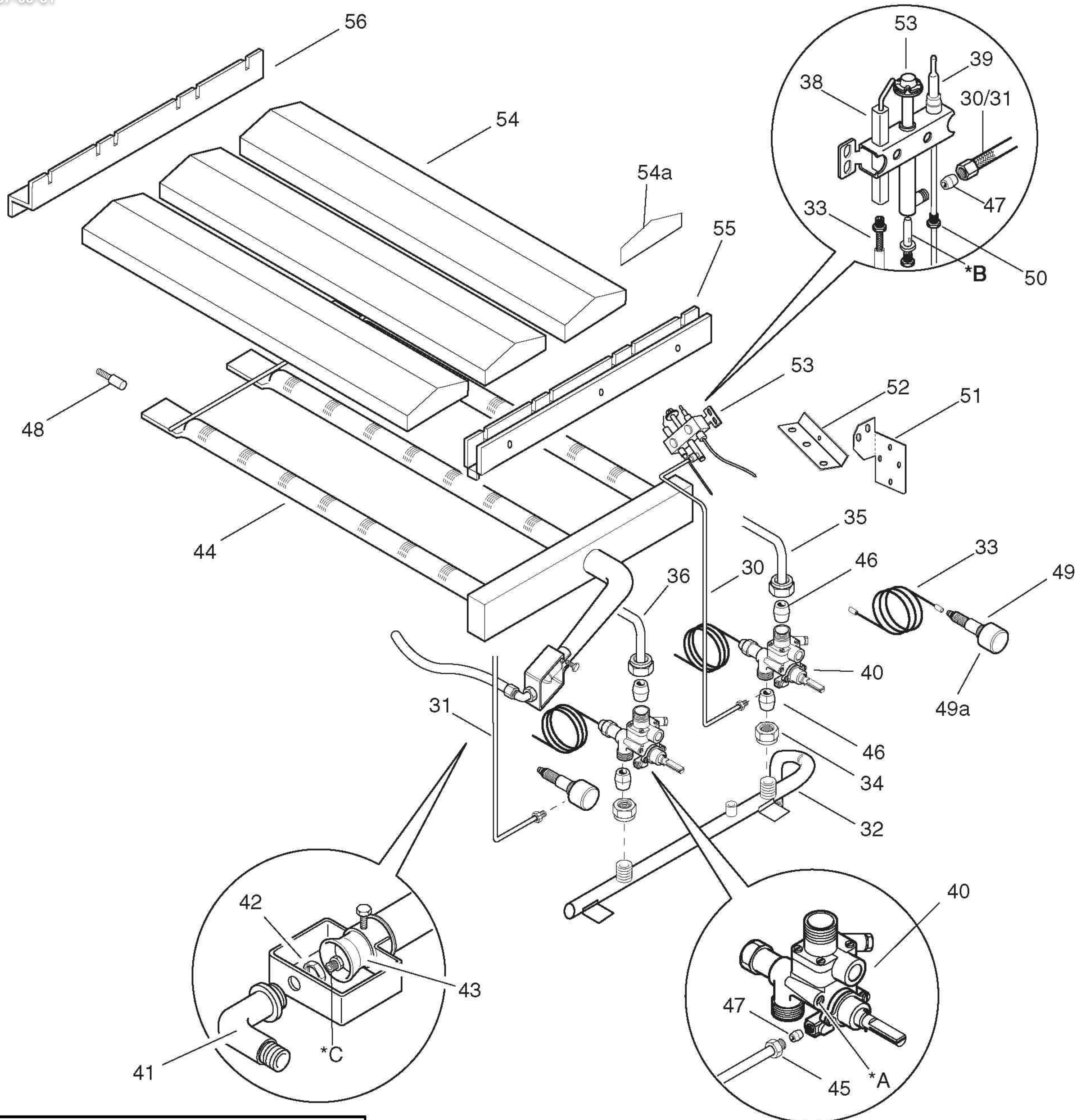
From ser. nr. / Da Ser. Nr.:.....

Ed. 2006 11

Doc. Nr.: **2 - 25 2 00**



GRIGLIA GAS ED ELETTRICA N900
GAS AND ELECTRIC GRILL N900



B - Ugello pilota / Pilot nozzle

| 6DGT Code | Ref./ Notes |
|-----------|---------------------------------|
| 056656 | n°35 2H/2E+ G20 20mbar |
| 056656 | n°35 2ELL G25 20mbar |
| 056656 | n°35 2L G25 25mbar |
| 058330 | n°25 3+3B/P G30/31 28-30/37mbar |
| 058330 | n°25 3B/P G30/31 50mbar |
| 056656 | n°35 No CE G20 10mbar |
| 056798 | n°70 G110 |
| 056798 | n°70 G120 |

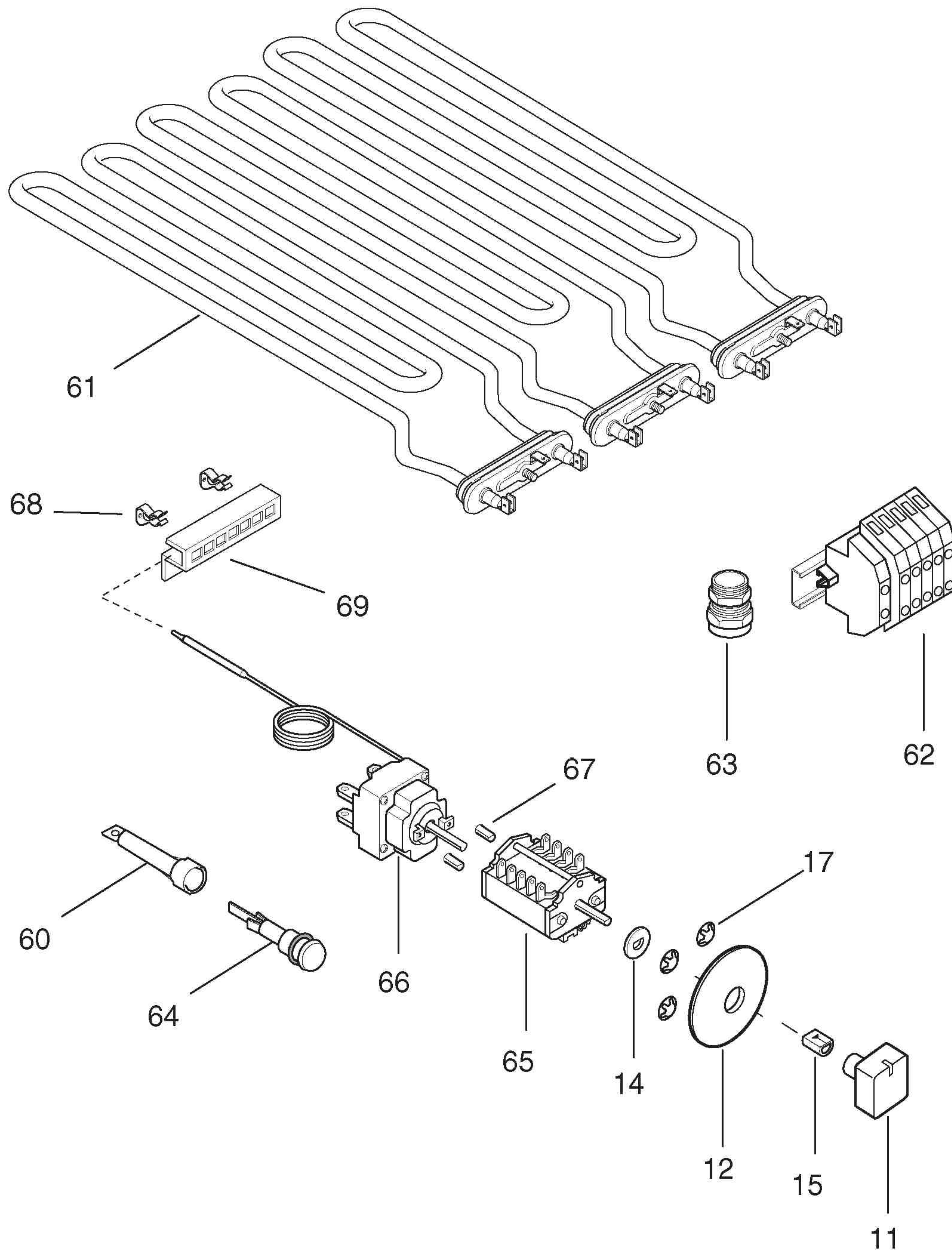
A - Vite di minimo / Min screw

| 6DGT Code | Ref./ Notes |
|-----------|----------------------------------|
| 002993 | n°180 2H/2E+ G20 20mbar |
| 002993 | n°180 2ELL G25 20mbar |
| 002993 | n°180 2L G25 25mbar |
| 056742 | n°110 3+3B/P G30/31 28-30/37mbar |
| 002392 | n°95 3B/P G30/31 50mbar |
| 002494 | n°220 No CE G20 10mbar |
| - | adjust G110 |
| - | adjust G120 |

C - Ugello bruciatore / Burner nozzle

| 6DGT Code | Ref. / Notes |
|-----------|----------------------------------|
| 059382 | ø2.50 2H/2E+ G20 20mbar |
| 0A2868 | ø2.75 2ELL G25 20mbar |
| 0A2570 | ø2.60 2L G25 25mbar |
| 0A2141 | ø1.65 3+3B/P G30/31 28-30/37mbar |
| 0A2091 | ø1.45 3B/P G30/31 50mbar |
| 059358 | ø2,85 No CE G20 10mbar |
| 0C0449 | ø5.40 G110 |
| 003951 | ø4.70 G120 |

GRIGLIA GAS N900
GAS GRILL N900



GRIGLIA ELETTRICA N900
ELECTRIC GRILL N900



ELECTROLUXPROFESSIONAL

ModularPlatform

Viale Treviso, 15
33170 Pordenone - Italy
Fax: +390434-380577

SPARE PARTS CATALOGUE
CATALOGO PARTI DI RICAMBIO

**GRIGLIA GAS ED ELETTRICA N900
GAS AND ELECTRIC GRILL N900**

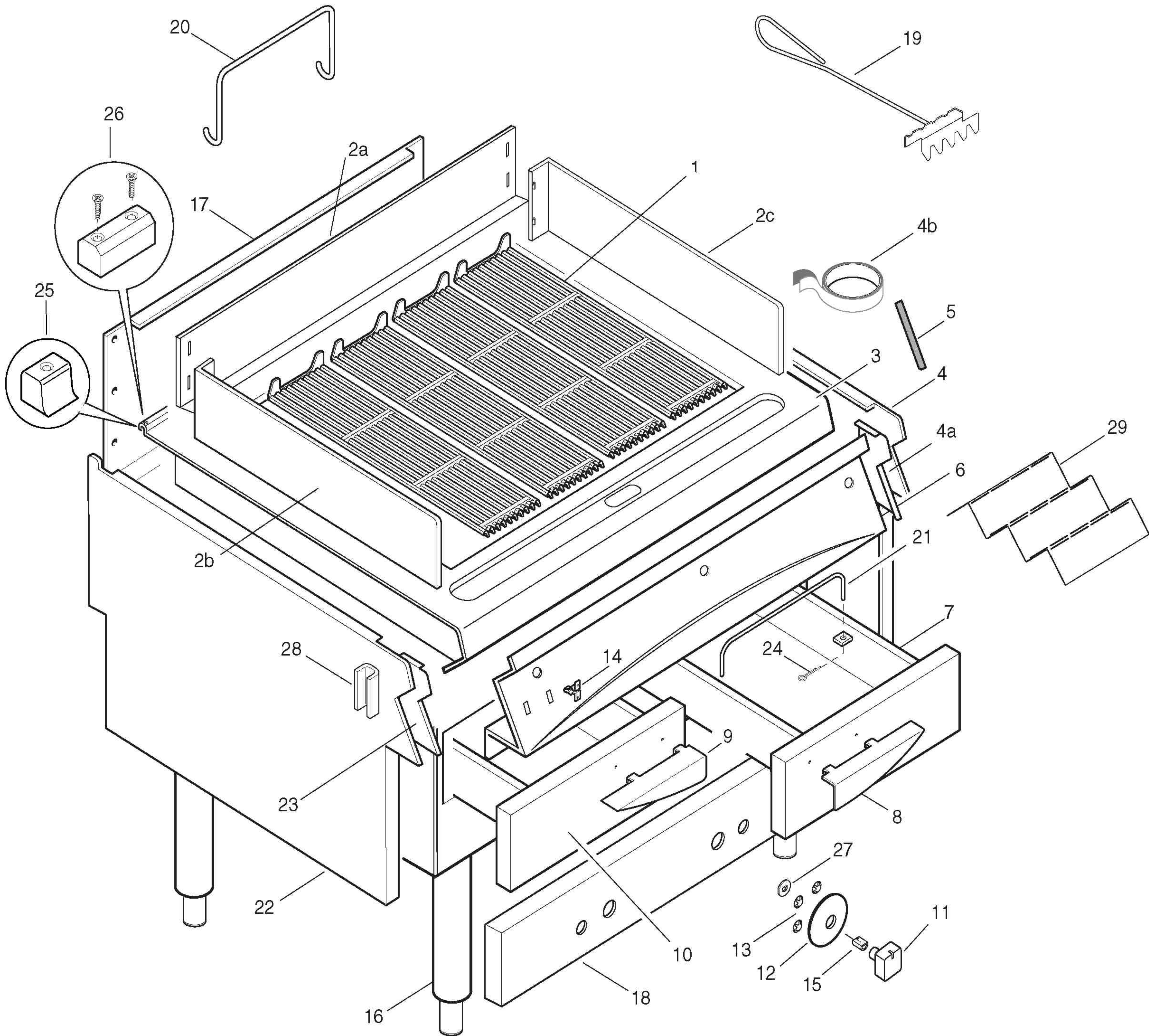
| PNC | Model | Ref. | Page | Notes |
|------------|--------------|-------------|-------------|------------------------|
| 200 241 | KGR/G1 | a | 1 - 6 | Gas grill 400 |
| 200 242 | KGR/G2 | b | 1 - 6 | Gas grill 800 |
| 200 249 | KGR/T1 | c | 1 - 6 | Gas grill Town Gas 400 |
| 200 250 | KGR/T2 | d | 1 - 6 | Gas grill Town Gas 800 |
| 200 243 | KGR/E1 | e | 1 - 6 | Electric grill 400 |
| 200 244 | KGR/E2 | f | 1 - 6 | Electric grill 800 |

Pag. 1 - 2 - 3
Pag. 4 - 5 - 6

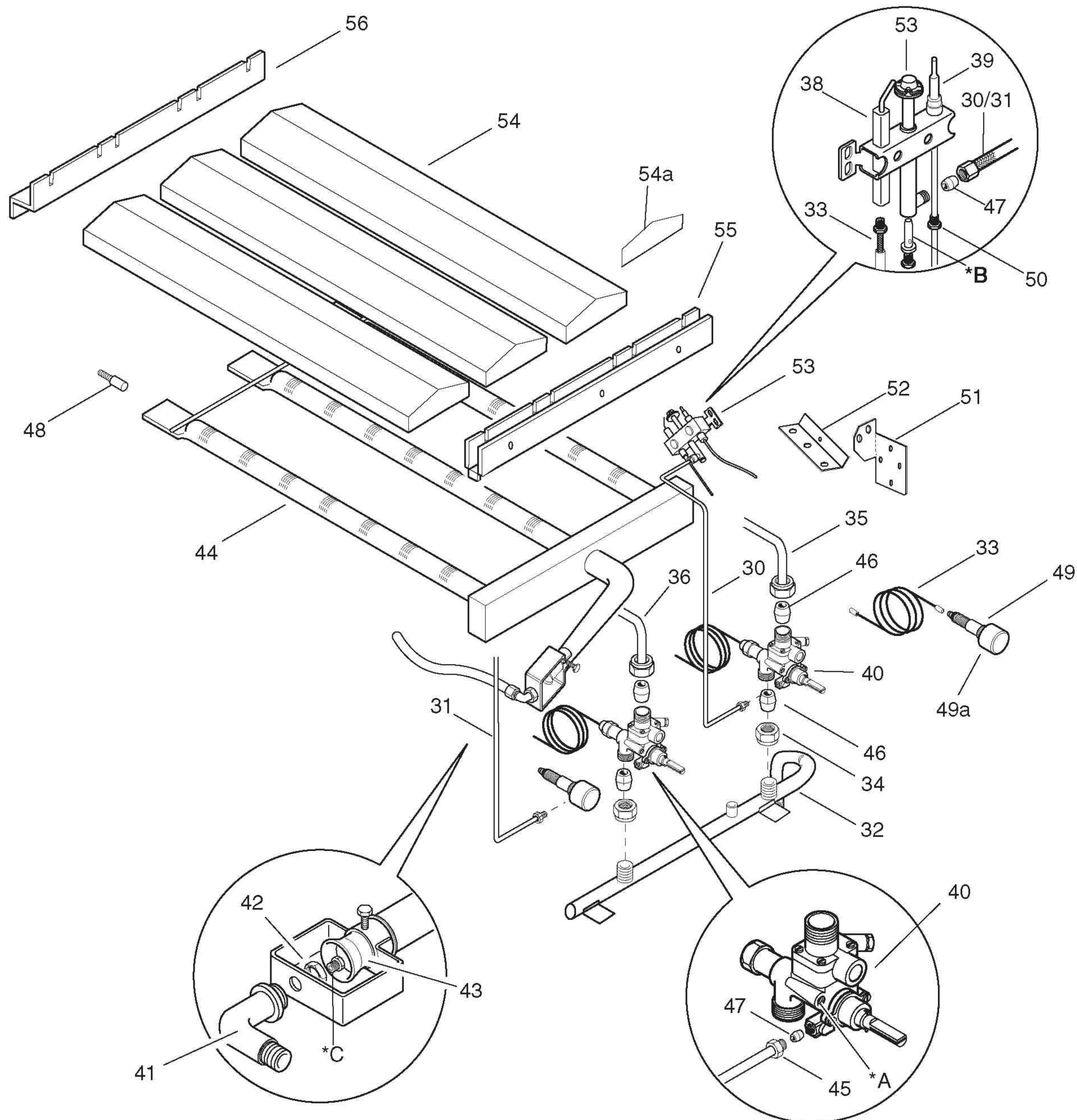
Index
Frame and components
Spare parts list

Indice
Struttura e componenti
Lista ricambi

Brand / Marchio : Zanussi
Factory code: 9PDX



GRIGLIA GAS ED ELETTRICA N900
GAS AND ELECTRIC GRILL N900

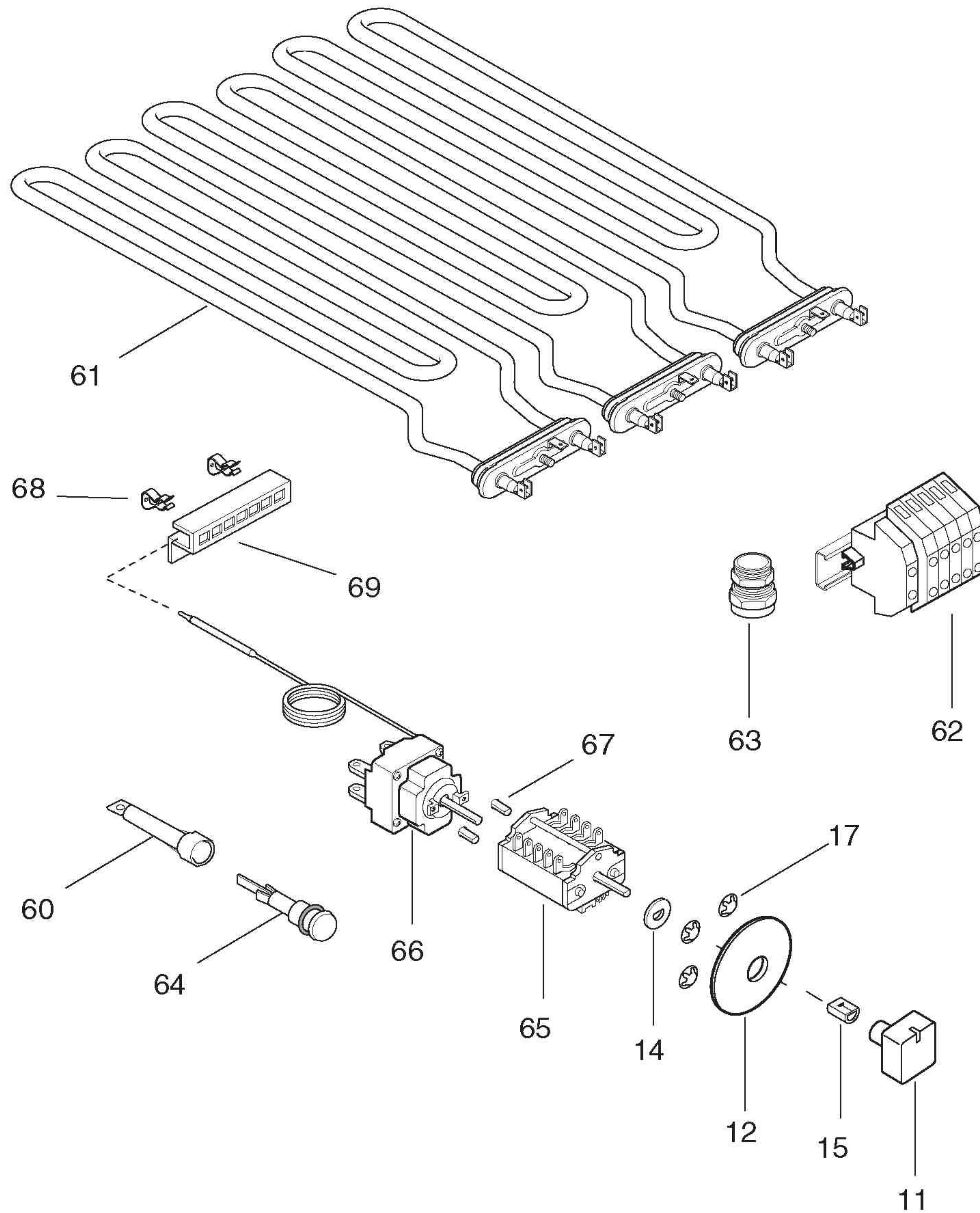


| A - Vite di minimo / Min screw | | |
|--------------------------------|--------------|---------------|
| 6DGT Code | Ref./ Notes | |
| 002993 | n°180 2H/2E+ | G20 20mbar |
| 002993 | n°180 2H | G20 25mbar |
| 002993 | n°180 2ELL | G25 20mbar |
| 002993 | n°180 2L | G25 25mbar |
| 002993 | n°180 2S | G25.1 25mbar |
| 056742 | n°110 3+3B/P | G30/31 30mbar |
| 056742 | n°110 3B/P | G30/31 36mbar |
| 002392 | n°95 3B/P | G30/31 50mbar |
| 002494 | n°220 No CE | G20 10mbar |
| - | adjust | G110 |
| - | adjust | G120 |

| B - Ugello pilota / Pilot nozzle | | |
|----------------------------------|-------------|---------------|
| 6DGT Code | Ref./ Notes | |
| 056656 | n°35 2H/2E+ | G20 20mbar |
| 056656 | n°35 2H | G20 25mbar |
| 056656 | n°35 2ELL | G25 20mbar |
| 056656 | n°35 2L | G25 25mbar |
| 056656 | n°35 2S | G25.1 25mbar |
| 058330 | n°25 3+3B/P | G30/31 30mbar |
| 058330 | n°25 3B/P | G30/31 36mbar |
| 058330 | n°25 3B/P | G30/31 50mbar |
| 056656 | n°35 No CE | G20 10mbar |
| 056798 | n°70 | G110 |
| 056798 | n°70 | G120 |

| C - Ugello bruciatore / Burner nozzle | | |
|---------------------------------------|--------------|---------------|
| 6DGT Code | Ref. / Notes | |
| 059382 | ø2.50 2H/2E+ | G20 20mbar |
| 0A5356 | ø2.35 2H | G20 25mbar |
| 0A2868 | ø2.75 2ELL | G25 20mbar |
| 0A2570 | ø2.60 2L | G25 25mbar |
| 0A2570 | ø2.60 2S | G25.1 25mbar |
| 0A2141 | ø1.65 3+3B/P | G30/31 30mbar |
| 0A2103 | ø1.55 3B/P | G30/31 36mbar |
| 0A2091 | ø1.45 3B/P | G30/31 50mbar |
| 059358 | ø2,85 No CE | G20 10mbar |
| 0C0449 | ø5.40 | G110 |
| 003951 | ø4.70 | G120 |

GRIGLIA GAS N900
GAS GRILL N900



GRIGLIA ELETTRICA N900
ELECTRIC GRILL N900