

**KROMO**

**TABLE  
KI2910**

**REV  
11**

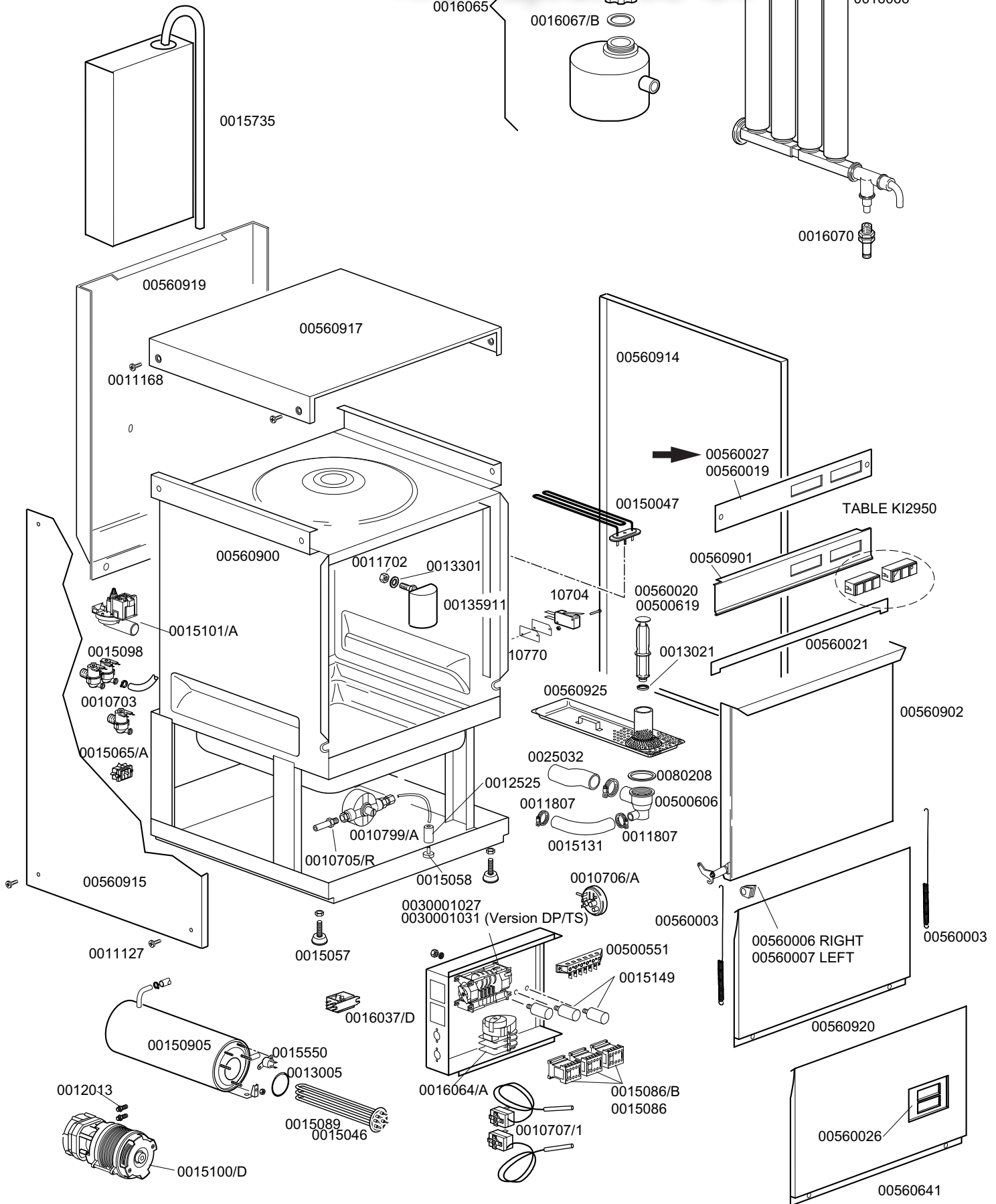
**DISHWASHER K 60**

**From serial Nr.01024354 on**

Зип Общепит

vsezip.ru

+7(812)987-0881



**DISHWASHER K 60**

**Зип Общепит**

**TABLE  
KI2910**

vsezip.ru

+7(812)599-0133

CODE	DESCRIPTION	CODE	DESCRIPTION
0010703	Single solenoid valve	00560901	Control panel
0010704	Door microswitch	00560902	Stainless steel handle door
0010705/R	Fitting for pipe d.8	00560914	Right side panel
0010706/A	Manostat 55-30	00560915	Left side panel
0010707/1	Thermostat 0-90° TR2 without shaft	00560917	External front stainless steel cover
0010770	Isolation for microswitch	00560919	Back panel
0010799/A	3-Way rinser additive measurer	00560920	Under door panel
0011702	M8 stainless steel nut	00560925	Surface filter
0011807	Stainless steel clamp 12-22	0080208	95x75x3 gasket
0012013	3/8 rubber-holder	0011168	M6x12 Stainless steel screw
0012525	Counterweight for small filter	0011127	M6x20 Stainless steel screw
0013005	OR 151 gasket	0015086	230V 50/60 Hz Remote control switch
0013021	DEM 40 gasket	00560027	Silkscreen processed grill ←
0013301	14x8x1,5 gasket		
00135911	Air tarp (gray)		
00150047	Tank resistance 2700W		
0015046	Boiler resistance 3000W		
0015057	Black M10x35 d.50 foot		
0015058	Suction filter		
0015065/A	Cable sheath		
0015086/B	Remote control switch 230V 50Hz		
0015089	Boiler resistance 4500W		
00150905	Boiler		
0015098	Double solenoid valve		
0015100/D	Booster pump		
0015101/A	Drain pump		
0015131	Tube rony-flex 30-450		
0015149	Interference suppressor filter F3		
0015550	Contact safety thermostat		
0015735	Complete stainless steel break tank		
0016037/D	Relay		
0016064/A	Timer 18 min. water conditioning		
0016066	Water softener 4 elements		
0016065	Salt container		
0016067/A	OR Gasket for salt container plug		
0016067/B	Salt container gasket		
0016067/C	Ring nut for salt container		
0016067/D	Salt container plug		
0016070	Check valve		
0016082	Funnel		
0025032	Suction coupling		
0030001027	2-Time timer 120"/180" 230V 50Hz		
0030001031	2 cycles timer 120/180" 230V 50Hz TM+PS		
00500551	6 pole-terminal board FV122		
00500606	Right side drainage trap		
00500619	Overflow		
00560003	Sping door		
00560006	Right gasket for spring		
00560007	Left gasket for spring		
00560009	Gasket for doorstop		
00560019	Silkscreen processed grill		
00560020	Overflow (Drain pump version - from March, 1999)		
00560021	Gasket for doorstop		
00560026	Silkscreen processed grill		
00560641	Under door panel for termomether		
00560900	Stainless steel structure		

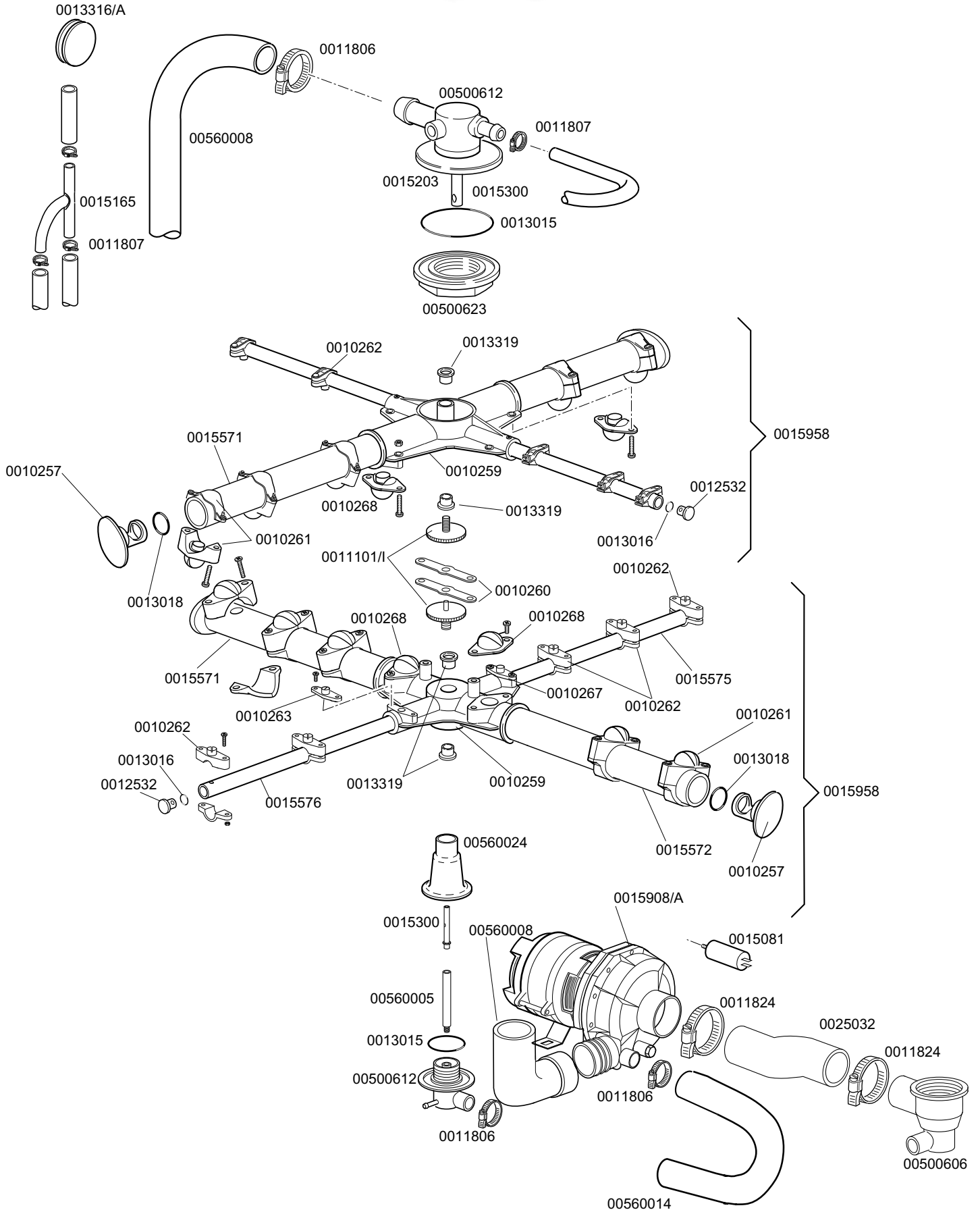
**KROMO****TABLE  
KI2930****REV  
02****DISHWASHER K 60**

From serial Nr.01011009 on

Зип Общепит

vsezip.ru

+7(812)987-08-81



DISHWASHER K60

Зип Общепит

TABLE  
KI2930

vsezip.ru

+7(812)987-08-81

CODE	DESCRIPTION	CODE	DESCRIPTION
0010257	Grey plastic cap		
0010259	4 ways big grey endorser		
0010260	Plate for rotor		
0010261	D.28 open grey nozzle		
0010262	D.10 rinse grey nozzle		
0010263	D.10 grey open level nozzle		
0010267	Closed flat rinse jet D.10 grey		
0010268	D.28 grey open level nozzle		
0011002	Stainless steel screw M4x12 TCB		
0011101/I	Fastening screws for assemblies		
0011806	Stainless steel clamp 25-40		
0011807	Stainless steel clamp 12-22		
0011824	Stainless steel clamp 50-70		
0012532	D.10 grey cap		
0013015	6225 Gasket		
0013016	OR 103 Gasket		
0013018	OR 2087 Gasket		
0013316/A	Blind gasket		
0013319	Sliding washer PTFE+CB H11		
0015081	Micrifarad 12,5 condenser		
<b>0015165</b>	<b>3-Way joint d.13</b>		
0015203	Brass nut for fitting DVGW		
0015300	Rinse axis		
0015571	Right washing pipe		
0015572	Left washing pipe		
0015575	Right rinsing pipe		
0015576	Left rinsing pipe		
0015908/A	Pump 0,75HP 230-240V		
0015958	Rinsing-washing unit 50-80		
0025032	Suction coupling		
00500606	Trap with right side drain		
00500612	Upper turret		
00500623	Turret fixing ring nut		
00560005	Lower rinse axis		
00560008	Upper delivery pipe		
00560014	Delivery pipe		
00560024	Lower coupling		

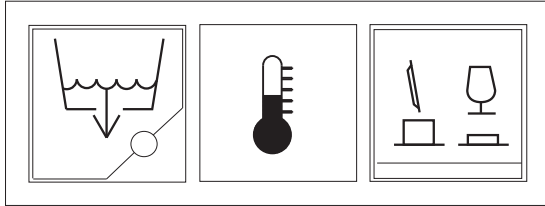
<b>KROMO</b>	TABLE	REV
	KI2950	01
SWITCHES K 60		

Зип Общепит

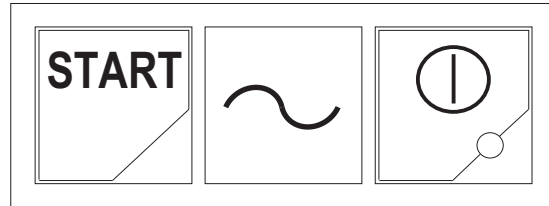
vsezip.ru

+7(812)987-08-81

**SERIES K60 DRAIN PUMP**



15962

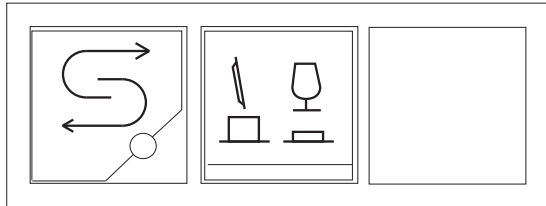


15888

**SERIES K 60 REGENERATION**



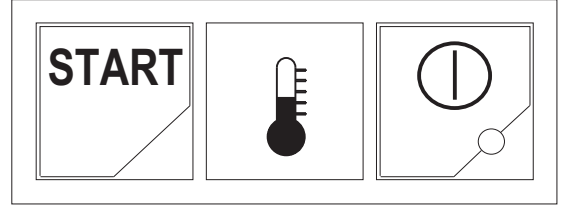
10711/B



15894/A



10711/B

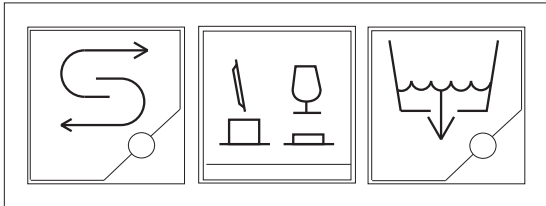


15891/A

**SERIES K 60 REGENERATION-DRAIN PUMP**



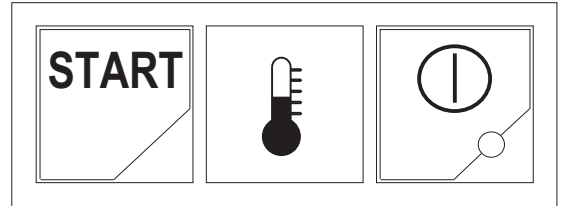
10711/B



15894/B

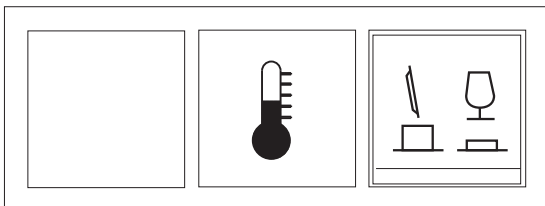


10711/B

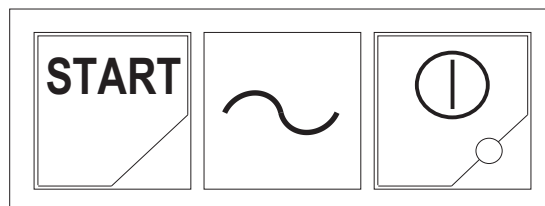


15891/A

**SERIES K60 STANDARD**



15961



15888

