



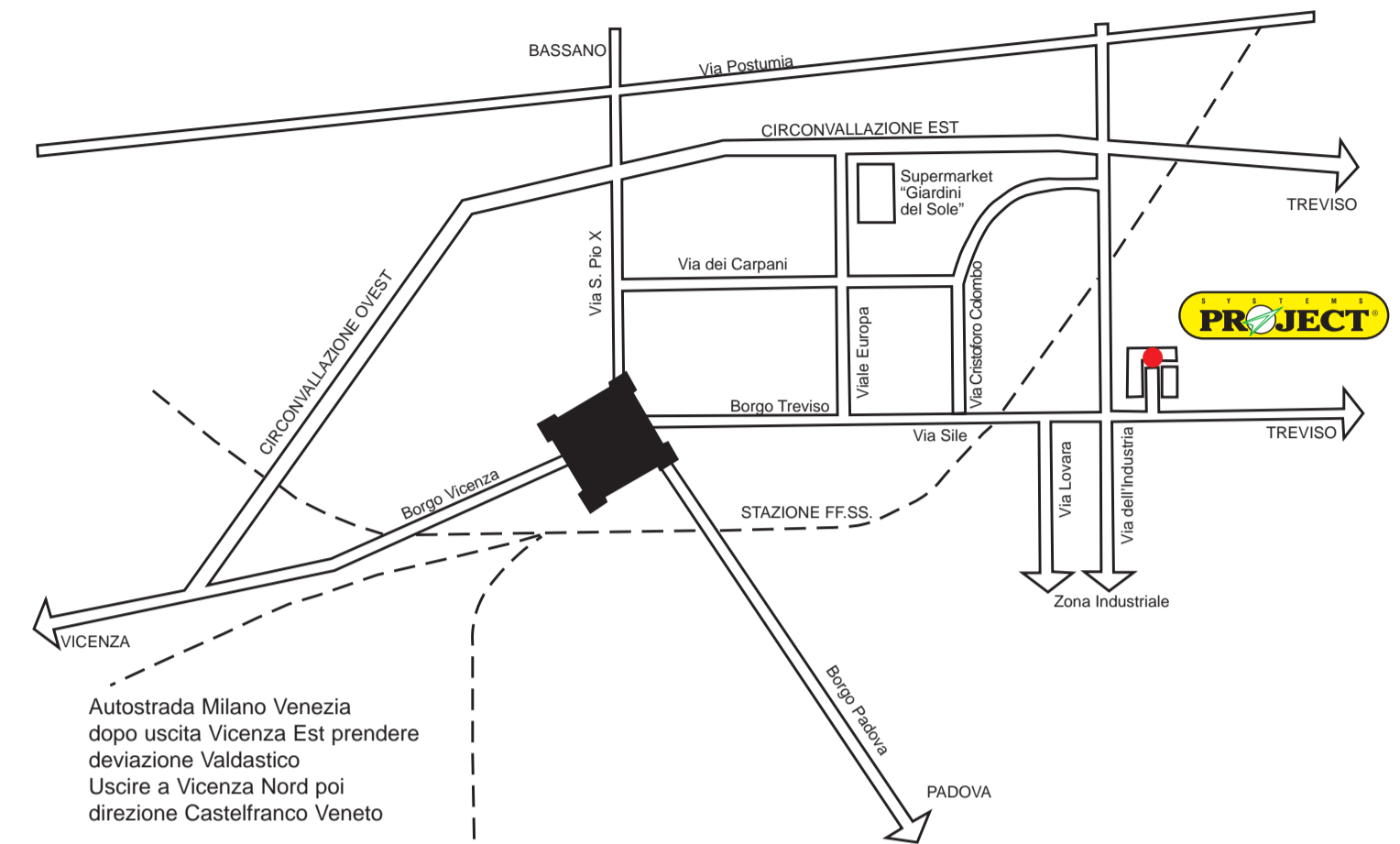
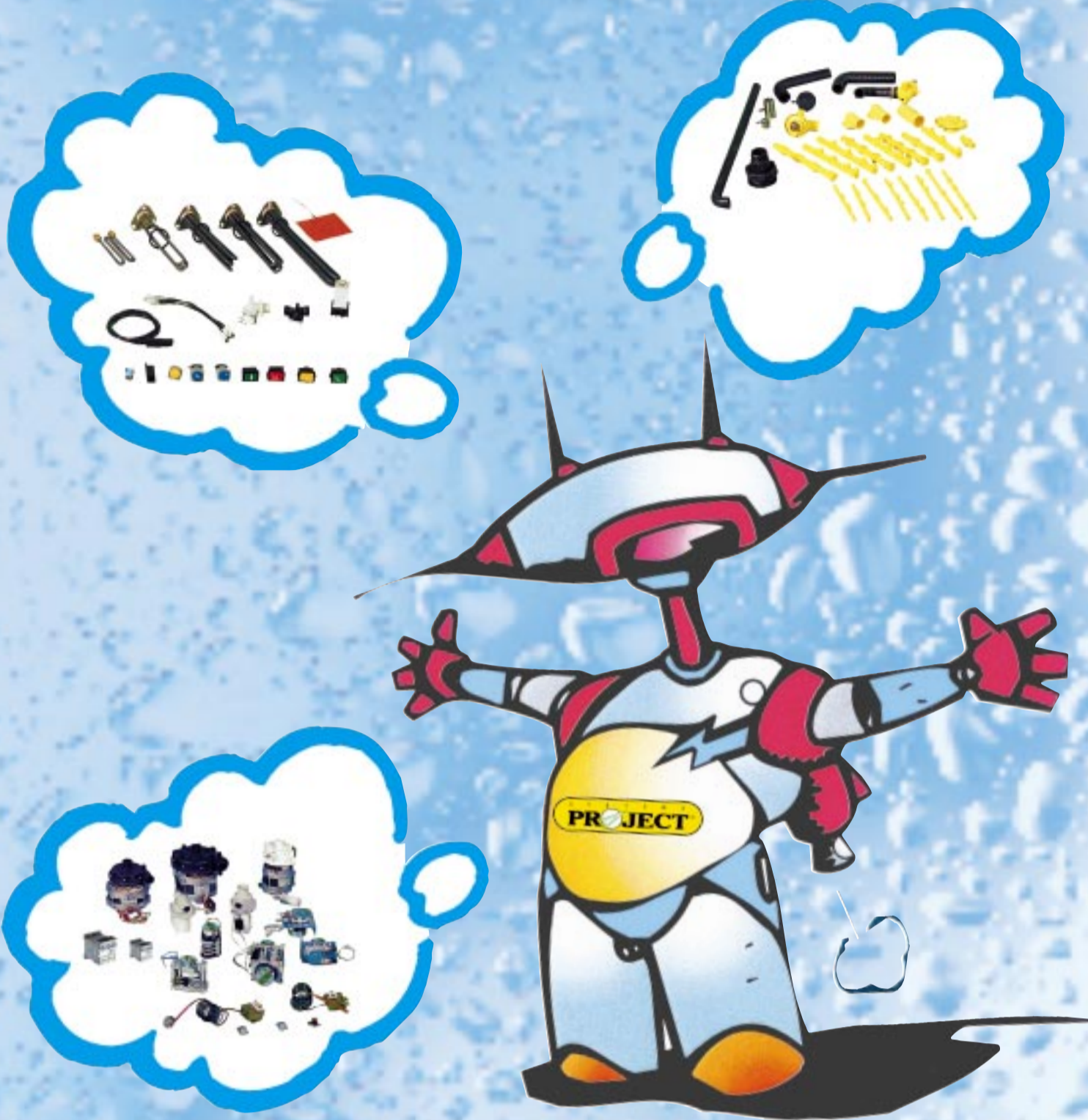
 CAMBIATE IN PROJECT SYSTEMS; È IL VOSTRO MERITO CHE VI MERITATE
 CHANGE INTO PROJECT SYSTEMS; THIS IS THE WAREHOUSE THAT YOU DESERVE
 CHANGEZ EN PROJECT SYSTEMS; C'EST L'ENTREPOT QUE VOUS VOUS MERITEZ
 GEHEN SIE ZUR PROJECT SYSTEMS; SIE HABEN ES DABIER GEMACHT, DAB SIE VERDIENEN
 CAMBIAT A PROJECT SYSTEMS; ESTE ES EL ALMACEN QUE VOS MERECEIS



PROJECT SYSTEMS - via Sile 37 - 31033 CASTELFRANCO VENETO (TV)
 Tel ++39 0423 722714 - ++39 0423 722545 fax ++39 0423 722545
 e-mail project@projectsystems.it - www.projectsystems.it

Come raggiungerci
 How to find us
 Voilà comment nous trouver
 So finden Sie uns
 Aquí tiene las instrucciones para encontrarnos

Per fortuna ci ha pensato Project Systems
 What luck that Project Systems took care of it
 Heureusement Project Systems s'en est occupé
 Ein glück, daß Project Sistems dafür gesorgt hat
 Por suerte Project Systems lo ha pensado



serie T
T 50
T 80

CATALOGO RICAMBI
SPARE PARTS LIST
CATALOGUE PIÉCES DÉTACHÉES
ERSATZTEILE KATALOG
CATALOGO REPUESTOS

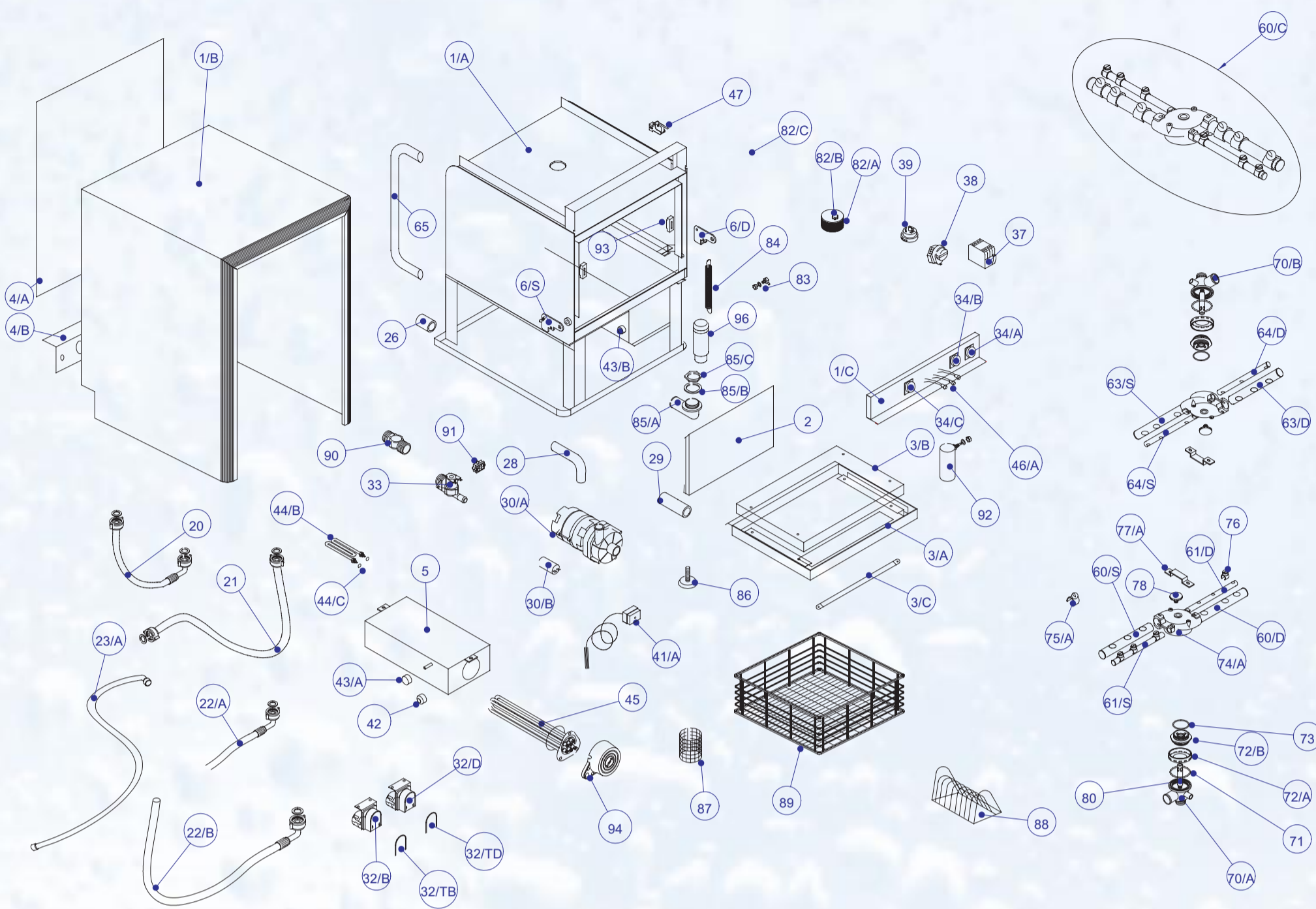
IL VOSTRO MAGAZZINO OGGI??
 YOUR WAREHOUSE TODAY??
 VOTRE ENTREPOT AUJOURD'HUI??
 IHR LAGER HEUTE??
 COMO ES SU ALMACEN ACTUALMENTE



ECCO I VOSTRI RICAMBI PER 6 GAMME DI MACCHINE CON 28 MODELLI BASE ...
HERE ARE YOUR SPARE PARTS FOR 6 RANGES OF MACHINES WITH 28 STANDARD MODELS ...
VOILÀ VOS PIÈCES DÉTACHÉES POUR 6 GAMMES DE MACHINES AVEC 28 MODELES STANDARD ...
HIER SIND IRE ERSATZTEILE FÜR 6 MASCHINEN LINIEN MIT 28 GRUNDMODELLE ...
AQUI TENEIS LOS REPUESTOS PARA 6 GAMAS DE MAQUINAS CON 28 MODELOS BASE ...



serie T 35 - 35/S - 40 - 50 - 80



- **KIT RICAMBI CONSIGLIATI**
- **ADVISE SPARE PARTS KIT**
- **KIT PIÈCES DÉTACHÉES CONSEILLÉES**
- **EMPTOHLNEN SET ERSATZTEILE**
- **KIT RECAMBIOS ACONSEJADOS**

| | | SERIE T | | | | |
|--------|---|----------------|--------------|-------------|-------------|-------------|
| POSIZ. | DESCRIPCIÓN | T 35 CODICE | T 35S CODICE | T 40 CODICE | T 50 CODICE | T 80 CODICE |
| 1/A | MUEBLE COMPLETO | 90000 | 90000-S | 100000 | 110000 | 110000 |
| 1/B | CUERPO DE MUEBLE | 90002 | 90002-S | 100002 | 110002 | 110002 |
| 1/C | PANEL DE MANDOS | 30941 | 30941 | 40940 | 50940 | 50940 |
| 1/D | BASE | | | | | |
| 2 | PANEL BAJO PUERTA | 30004 | 30004-S | 40004 | 50004 | 50004 |
| 3/A | PUERTA | 30130 | 30130-S | 40130 | 50130 | 50130 |
| 3/B | CONTRAPUERTA | 30140 | 30140-S | 40140 | 50140 | 50140 |
| 3/C | TIRADOR | 17230 | 17230 | 17230 | 17230 | 17230 |
| 4/A | PANEL POSTERIOR | 90006 | 90006-S | 100006 | 110006 | 110006 |
| 4/B | CIERRE PANEL POSTERIOR | 90007 | 90007 | 100007 | 110007 | 110007 |
| 4/D | PANEL LATERAL DERECHO | | | | | |
| 4/S | PANEL LATERAL IZQUIERDO | | | | | |
| 5 | CALDERIN | 90930 | 90930 | 90930 | 90930 | 90930 |
| 6 | BISAGRA PUERTA | 17900 DX | 17900 DX | 17900 DX | 17900 DX | 17900 DX |
| 6/D | BISAGRA DERECHA COMPLETA | 17900 DX | 17900 DX | 17900 DX | 17900 DX | 17900 DX |
| 6/S | BISAGRA IZQUIERDA COMPLETA | 17900 SX | 17900 SX | 17900 SX | 17900 SX | 17900 SX |
| 20 | MANGUITO CON VALVULA ANTI-RETORNO | 30762 | 30762 | 30763 | 30764 | 30764 |
| 21 | MANGUITO DE CARGA DE AGUA | 30760 | 30760 | 30760 | 30760 | 30760 |
| 22/A | TUBO ASPIRACION BOMBA DE ACLARADO | 23020 | 23020 | 23020 | 23020 | 23020 |
| 22/B | MANGUITO SUPERIOR DE ACLARADO | 30765 | 30765 | 30766 | 30767 | 30767 |
| 23/A | MANGUITO DE DESAGÜE | 30770 | 30770 | 30770 | 30770 | 30770 |
| 23/B | TUBO BOMBA DESAGÜE | | | | | |
| 24 | MANGUITO RACOR 3/4 LAVADO SUPERIOR | | | | | |
| 25 | RACOR Y LAVADO SUPERIOR | | | | | |
| 26 | TUBO ASPIRACION BOMBA DESAGÜE | | | | | |
| 28 | MANGUITO DE IMPULSION BOMBA DE LAVADO | 23036 | 23036 | 23036 | 23036 | 23036 |
| 29 | MANGUITO ASPIRACION BOMBA DE LAVADO | 23019 | 23019 | 23019 | 23019 | 23019 |
| 30/A | BOMBA LAVADO | 40647 | 40647 | 40647 | 50650 | 40647 |
| 30/B | CONDENSADOR PARA BOMBA LAVADO | 40645 | 40645 | 40645 | 50645 | 50645 |
| 32/B | DOSIFICADOR ABRILLANTADOR | 30683 | 30683 | 30683 | 30683 | 30683 |
| 32/D | DOSIFICADOR DETERGENTE | 30673 | 30673 | 30673 | 30673 | 30673 |
| 32/TB | TUBO DE RECARGA DOSIFICADOR ABRILLANTADOR | 23063 | 23063 | 23063 | 23063 | 23063 |
| 32/TD | TUBO DE RECARGA DOSIFICADOR DETERGENTE | 23062 | 23062 | 23062 | 23062 | 23062 |
| 33 | ELECTROVALVULA | 30600 | 30600 | 30600 | 30600 | 30600 |
| 34/A | PULSADOR MARCHA LAVADO (START) | 30422 | 30422 | 30422 | 30422 | 30422 |
| 34/B | PULSADOR DESAGÜE | | | | | |
| 34/C | INTERRUPTOR ON/OFF | 30423 | 30423 | 30423 | 30423 | 30423 |
| 34/D | INTERRUPTOR LAVADO CONTINUADO | | | | | |
| 35 | ABRAZADERA 12 POLOS | | | | | |
| 36/A | ZOCALO DE OCHO CLEMAS | | | | | |
| 36/B | TIMER 60" | | | | | |
| 37/A | TELERUPTOR 25 A | | | | 30525 | 30525 |
| 37/B | TELERUPTOR 32 A | | | | | |
| 38 | PROGRAMADOR CICLO | 30450 | 30450 | 30450 | 30450 | 30450 |
| 39 | PRESOSTATO | 30530 | 30530 | 30530 | 30530 | 30530 |
| 40 | BOMBA DESAGÜE | | | | | |
| 41/A | TERMOSTATO CON SONDA | 30510 | 30510 | 30510 | 30510 | 30510 |
| 41/C | TERMOSTATO CON PASTILLA | | | | | |
| 42 | TERMOSTATO DE SEGURIDAD | 30517 | 30517 | 30517 | 30517 | 30517 |
| 43/A | TERMOSTATO FIJO 80° | | | | | |
| 43/B | TERMOSTATO FIJO 60° | 30518 | 30518 | 30518 | 30518 | 30518 |
| 44/A | RESISTENCIA CUBA 100W | | | | | |
| 44/B | RESISTENCIA 1500W | 60645 | 60645 | 60645 | 60645 | 60645 |
| 44/C | ANILLO TORICO PARA RESISTENCIA CUBA | 18030 | 18030 | 18030 | 18030 | 18030 |
| 45 | RESISTENCIA CALDERIN 230 V 3 KW | 60640 N | 60640 N | 60640 N | 60640 N | 60640 N |
| | RESISTENCIA CALDERIN 400 V 4 KW TRIFASICO | | | | 50640 | 50640 |
| | RESISTENCIA CALDERIN 400 V 6 KW TRIFASICO | | | | 50640 | 50640 |
| | RESISTENCIA CALDERIN 400 V 8 KW TRIFASICO | | | | 50644 | 50644 |
| 46/A | TESTIGO LUMINOSO VERDE | 30435 | 30435 | 30435 | 30435 | 30435 |
| 46/B | TESTIGO LUMINOSO ROJO | | | | | |
| 47 | MICROINTERRUPTOR PUERTA | 30610 | 30610 | 30610 | 30610 | 30610 |

| | | SERIE T | | | | |
|--------|---------------------------------------|----------------|--------------|-------------|-------------|-------------|
| POSIZ. | DESCRIPCIÓN | T 35 CODICE | T 35S CODICE | T 40 CODICE | T 50 CODICE | T 80 CODICE |
| 49/A | PORTAFUSIBLES TRIPOLAR | | | | | |
| 49/B | FUSIBLE 16 A | | | | | |
| 60/B | GRUPO LAVADO-ACLARADO COMPLETO | 30950P | 30950P | 40950P | 50950P | 50950P |
| 60/C | GRUPO ACLARADO SUPERIOR COMPLETO | | | | | |
| 60/S | TUBO LAVADO INFERIOR IZQUIERDO | 30380 | 30380 | 40380 | 50380 | 50380 |
| 60/D | TUBO LAVADO INFERIOR DERECHO | 30370 | 30370 | 40370 | 50370 | 50370 |
| 61/S | TUBO ACLARADO INFERIOR IZQUIERDO | 30400 | 30400 | 40400 | 50390 | 50390 |
| 61/D | TUBO ACLARADO INFERIOR DERECHO | 30390 | 30390 | 40390 | 50400 | 50400 |
| 62/S | TUBO ACLARADO SUPERIOR IZQUIERDO | | | | | |
| 62/D | TUBO ACLARADO SUPERIOR DERECHO | | | | | |
| 63/S | TUBO LAVADO SUPERIOR IZQUIERDO | 30380 | 30380 | 40380 | 50380 | 50380 |
| 63/D | TUBO LAVADO SUPERIOR DERECHO | 30370 | 30370 | 40370 | 50370 | 50370 |
| 64/S | TUBO ACLARADO SUPERIOR IZQUIERDO | 30400 | 30400 | 40400 | 50390 | 50390 |
| 64/D | TUBO ACLARADO SUPERIOR DERECHO | 30390 | 30390 | 40390 | 50400 | 50400 |
| 65 | TUBO DE IMPULSO LAVADO SUPERIOR | 30120 | 30120 S | 40120 | 50120 | 50120 |
| 66 | RACOR VENTURI PARA DESAGÜE SERIE P | | | | | |
| 70/A | DISTRIBUIDOR LAVADO ACLARADO INF | 20018B | 20018B | 20018B | 20018B | 20018B |
| 70/B | DISTRIBUIDOR LAVADO ACLARADO SUPERIOR | 20018C | 20018C | 20018C | 20018C | 20018C |
| 71 | ANILLO TORICO PARA GRUPO DE LAVADO | 18025 | 18025 | 18025 | 18025 | 18025 |
| 72/A | GUÍA DE FIJACION GRUPO LAVADO | 20135P | 20135P | 20135P | 20135P | 20135P |
| 72/B | GUÍA DE RETENCION GRUPO LAVADO | 20017 | 20017 | 20017 | 20017 | 20017 |
| 73 | ANILLA DE SUJECCION DEL GRUPO LAVADO | 20016 | 20016 | 20016 | 20016 | 20016 |
| 74/A | VOLANTE DE LAVADO 2 VIAS PARALELO | 20015 | 20015 | 20015 | 20015 | 20015 |
| 74/B | VOLANTE DE LAVADO SUPERIOR | | | | | |
| 75/A | DIFUSOR DE LAVADO | 20049 | 20049 | 20049 | 20049 | 20049 |
| 75/B | DIFUSOR DE LAVADO SUPERIOR FIJO | | | | | |
| 76 | DIFUSOR DE ACLARADO | 17025 | 17025 | 17025 | 17025 | 17025 |
| 77/A | OMEGA PARA VOLANTE DE LAVADO | 20014 | 20014 | 20014 | 20014 | 20014 |
| 77/B | OMEGA PARA VOLANTE ACLARADO | 20013 | 20013 | 20013 | 20013 | 20013 |
| 78 | ARANDELA LATON NIQUELADA M8 | 17180 | 17180 | 17180 | 17180 | 17180 |
| 79/A | TORRETA ACLARADO SUPERIOR | | | | | |
| 79/B | ANILLO TORICO 2018 (103) SIL | 18005 | 18005 | 18005 | 18005 | 18005 |
| 79/C | GUARNICION 3/4 AGUA | 19050 | 19050 | 19050 | 19050 | 19050 |
| 80 | ARBOL INOX PARA GRUPO LAVADO | 17045 | 17045 | 17045 | 17045 | 17045 |
| 81 | Y PRESOSTATOS | | | | | |
| 82/A | FILTRO BOMBA COMPLETA | 15905 | 15905 | 15905 | 15910 | 15910 |
| 82/B | TUERCA MARIPOSA PARA FILTRO BOMBA | 120480 | 120480 | 120480 | 120480 | 120480 |
| 82/C | FILTRO CUBA | | | | 80010 | 80010 |
| 82/D | CUBRE RESISTENCIA CUBA | | | | 80011 | 80011 |
| 83 | INYECTOR DETERGENTE | 16920 | 16920 | 16920 | 16920 | 16920 |
| 84 | MUELLE PUERTA | 15080 | 15080 | 15080 | 15080 | 15080 |
| 85/A | CODO ASPIRACION/DESAGÜE | 20090 | 20090 | 20090 | 20090 | 20090 |
| 85/B | GUARNICION CODO DESAGÜE | 19000 | 19000 | 19000 | 19000 | 19000 |
| 85/C | TUERCA SUJECCION CODO DE DESAGÜE | 17060 | 17060 | 17060 | 17060 | 17060 |
| 86 | PIE | 15135 | 15135 | 15135 | 15135 | 15135 |
| 87 | PORTA CUCHARILLAS | 30750 | 30750 | 30750 | 30750 | 30750 |
| 88 | PORTA PLATTOS | 30740 | 30740 | 30740 | 30740 | 30740 |
| 89/A | CESTO VASOS | C0001 | C0001 | C0003 | C0005 | C0005 |
| 89/B | CESTO PLATOS | | | | C0011 | C0011 |
| 90 | VALVULA ANTI RETORNO | 30603 | 30603 | 30603 | 30603 | 30603 |
| 91 | FLUACION CABLE | 60590 | 60590 | 60590 | 60590 | 60590 |
| 92 | JAUJA DE AIRE COMPLETA | 20100 | 20100 | 20100 | 20100 | 20100 |
| 93 | ELEMENTO DE BLOQUEO GUÍA PUERTA | 20150 | 20150 | 20150 | 20150 | 20150 |
| 94 | PROTECCION ENLACES DE LA RESISTENCIA | 20155 | 20155 | 20155 | 20155 | 20155 |
| 95 | RACOR PARA LAVADO SUPERIOR | | | | | |
| 96/A | TAPON TUBO LAVADO | | | | | |
| 96/B | ANILLO TORICO TAPON TUBO DE LAVADO | | | | | |
| 96/C | TAPON TUBO ACLARADO | | | | | |
| 96/D | ANILLO TORICO TAPON TUBO DE DESAGÜE | | | | | |
| 97 | DEMASIADO LLENO | 100790 | 100790 | 100790 | 80790 | 80790 |
| 99 | CIERRE PUERTA COMPLETA | | | | | |



Зип Общепит

vsezip.ru

+7(812)987-08-81

| POSIZ. | DESCRIZIONE |
|--------|--------------------------------------|
| 1/A | CASSONE COMPLETO |
| 1/B | CAMICIA INOX |
| 1/C | PANNELLO DI COMANDO |
| 1/D | BASAMENTO INOX |
| 2 | PANNELLO SOTTOPORTA |
| 3/A | PORTA |
| 3/B | CONTROPORTA |
| 3/C | MANIGLIA PORTA INOX |
| 4/A | PANNELLO POSTERIORE |
| 4/B | CHIUSURA PANN. POST. |
| 4/D | PANNELLO LATERALE DESTRO |
| 4/S | PANNELLO LATERALE SINISTRO |
| 5 | BOILER (SENZA RESISTENZA) |
| 6 | CERNIERA PORTA |
| 6/D | CERNIERA DESTRA COMPLETA |
| 6/S | CERNIERA SINISTRA COMPLETA |
| 20 | CANNA CARICO VALVOLA NON RITORNO |
| 21 | CANNA CARICO ACQUA |
| 22/A | CANNA RISCIACCUO INFERIORE |
| 22/B | CANNA RISCIACCUO SUPERIORE |
| 23/A | CANNA DI SCARICO |
| 23/B | TUBO POMPA SCARICO |
| 24 | CANNA RACCORDO "3/4" LAV. SUP. |
| 25 | RACCORDO Y LAVAGGIO SUP. |
| 26 | TUBO ASPIRAZIONE POMPA SCARICO |
| 28 | MANICOTTO MANDATA LAVAGGIO INFERIORE |
| 29 | MANICOTTO ASPIRAZIONE LAVAGGIO |
| 30/A | POMPA LAVAGGIO |
| 30/B | CONDENSATORE PER POMPA LAV. |
| 32/B | DOSATORE BRILLANTANTE |
| 32/D | DOSATORE DETERSIVO |
| 32/TB | TUBO RIC. DOS. BRILLANTANTE |
| 32/TD | TUBO RIC. DOS. DETERSIVO |
| 33 | ELETTROVALVOLA 90° |
| 34/A | PULSANTE START |
| 34/B | PULSANTE SCARICO |
| 34/C | INTERRUTTORE ON/OFF |
| 34/D | INTERRUTTORE LAV. CONTINUO |
| 35 | MORSETTIERA 12 POLI |
| 36/A | ZOCCOLO OCTAL |
| 36/B | TIMER 60" |
| 37/A | TELERUTTORE 25 A |
| 37/B | TELERUTTORE 32 A |
| 38 | PROGRAMMATORE CICLO |
| 39 | PRESSOSTATO |
| 40 | POMPA SCARICO PROJECT |
| 41/A | TERMOSTATO CON Sonda |
| 41/C | TERMOSTATO CON PASTIGLIA |
| 42 | TERMOSTATO DI SICUREZZA 120 °C |
| 43/A | TERMOSTATO FISSO 80 °C BOILER |
| 43/B | TERMOSTATO FISSO 60 °C VASCA |
| 44/A | RESISTENZA VASCA 100W |
| 44/B | RESISTENZA 1500W |
| 44/C | OR PER RESISTENZA VASCA |
| 45 | RESISTENZA BOILER 230V 3KW MONOFASE |
| | RESISTENZA BOILER 400V 4KW TRIFASE |
| | RESISTENZA BOILER 400V 6KW TRIFASE |
| | RESISTENZA BOILER 400V 8KW TRIFASE |
| 46/A | LAMPADA SPIA VERDE |
| 46/B | LAMPADA SPIA ROSSA |
| 47 | MICROINTERRUTTORE PORTA |



| POSIZ. | DESCRIZIONE |
|--------|---------------------------------------|
| 49/A | PORTAFUSIBILE TRIPOLARE |
| 49/B | FUSIBILE 16A |
| 60/B | GRUPPO LAVAGGIO RISCIACCUO COMPLETO |
| 60/C | GRUPPO RISCIACCUO SUPERIORE COMPLETO |
| 60/S | TUBO LAVAGGIO INFERIORE SINISTRO |
| 60/D | TUBO LAVAGGIO INFERIORE DESTRO |
| 61/S | TUBO RISCIACCUO INFERIORE SINISTRO |
| 61/D | TUBO RISCIACCUO INFERIORE DESTRO |
| 62/S | TUBO RISCIACCUO SUPERIORE SINISTRO |
| 62/D | TUBO RISCIACCUO SUPERIORE DESTRO |
| 63/S | TUBO LAVAGGIO SUPERIORE SINISTRO |
| 63/D | TUBO LAVAGGIO SUPERIORE DESTRO |
| 64/S | TUBO RISCIACCUO SUPERIORE SINISTRO |
| 64/D | TUBO RISCIACCUO SUPERIORE DESTRO |
| 65 | TUBO MANDATA LAVAGGIO SUPERIORE |
| 66 | RACCORDO VENTURI PER SCARICO SERIE P |
| 70/A | DISTRIBUTORE LAVAGGIO RISCIACCUO INF |
| 70/B | DISTRIBUTORE LAVAGGIO RISCIACCUO SUP |
| 71 | OR PER GRUPPO LAVAGGIO |
| 72/A | CUFFIA PARASPRUZZI IN PLASTICA |
| 72/B | GHIERA DI FISSAGGIO GRUPPO LAVAGGIO |
| 73 | ANELLO DI TENUTA GRUPPO LAVAGGIO |
| 74/A | GIRELLO LAVAGGIO 2 VIE PARALLELO |
| 74/B | GIRELLO RISCIACCUO SUPERIORE |
| 75/A | UGELLO LAVAGGIO AD INCASTRO |
| 75/B | UGELLO LAVAGGIO SUP. FISSO |
| 76 | UGELLO RISCIACCUO AD INCASTRO |
| 77/A | OMEGA PER GIRELLO LAVAGGIO |
| 77/B | OMEGA PER GIRELLO RISCIACCUO |
| 78 | RONDELLA OTTONE NICHELATO M8 |
| 79/A | TORRETTA RISCIACCUO SUPERIORE ATTACCO |
| 79/B | OR 2018-(103) SIL |
| 79/C | GUARNIZIONE "3/4" ACQUA |
| 80 | ALBERO INOX PER GRUPPO LAVAGGIO |
| 81 | Y PRESSOSTATI |
| 82/A | FILTRO POMPA COMPLETO |
| 82/B | VOLANTINO A LOBI PER FILTRO POMPA |
| 82/C | FILTRO VASCA |
| 82/D | COPRIRRESISTENZA VASCA |
| 83 | INIETTORE DETERSIVO |
| 84 | MOLLA PORTA |
| 85/A | GOMITO ASPIRAZIONE/SCARICO |
| 85/B | GUARNIZIONE GOMITO SCARICO |
| 85/C | DADO GOMITO (PILETTA) SCARICO |
| 86 | PIEDINO |
| 87 | PORTACUCCHIAINI |
| 88 | PORTAPIATTINI 12 POSTI |
| 89/A | CESTO BICCHIERI |
| 89/B | CESTO PIATTI |
| 90 | VALVOLA NON RITORNO |
| 91 | FISSACAVO |
| 92 | GABBIA D'ARIA COMPLETA |
| 93 | BLOCCETTO PER TIRANTI PORTA |
| 94 | PROTEZIONE COLLEGAMENTI RESISTENZA |
| 95 | RACCORDO PER LAVAGGIO SUPERIORE |
| 96/A | TAPPO TUBO LAVAGGIO |
| 96/B | OR PER TAPPO TUBO LAVAGGIO |
| 96/C | TAPPO TUBO RISCIACCUO |
| 96/D | OR PER TAPPO TUBO RISCIACCUO |
| 97 | TROPPOPIENO |
| 99 | CHIUSURA PORTA COMPLETA |



| POSIZ. | DESCRIPTION |
|--------|--|
| 1/A | COMPLETE CABINET |
| 1/B | INNER JACKET |
| 1/C | SWITCH PANEL |
| 1/D | BASE SUPPORT |
| 2 | UNDER DOOR PANEL |
| 3/A | DOOR |
| 3/B | INNER DOOR |
| 3/C | HANDLE |
| 4/A | BACKSIDE PANEL |
| 4/B | BACKSIDE PANEL GRIPPING |
| 4/D | RIGHT LATERAL PANEL |
| 4/S | LEFT LATERAL PANEL |
| 5 | BOILER |
| 6 | DOOR HINGE |
| 6/D | COMPLETE RIGHT HINGE |
| 6/S | COMPLETE LEFT HINGE |
| 20 | ANTIPOLLUTION DEVICE FILLING PIPE |
| 21 | WATER INLET PIPE |
| 22/A | LOWER RINSING PIPE |
| 22/B | UPPER RINSING PIPE |
| 23/A | DRAIN PIPE |
| 23/B | DRAIN PUMP PIPE |
| 24 | UPPER WASH CONNECTION 3/4 PIPE |
| 25 | UPPER WASH CONNECTOR |
| 26 | DRAIN PUMP SUCTION PIPE |
| 28 | WASH INLET CONNECTOR |
| 29 | WASH SUCTION CONNECTOR |
| 30/A | WASHING PUMP |
| 30/B | WASHING PUMP CONDENSER |
| 32/B | RINSE-AID DOSING PUMP |
| 32/D | DETERGENT DOSING PUMP |
| 32/TB | RINSE-AID DOSING PUMP FILLING PIPE |
| 32/TD | DETERGENT DOSING PUMP FILLING PIPE |
| 33 | SOLENOID |
| 34/A | START PUSH BUTTON |
| 34/B | DRAIN PUSH BUTTON |
| 34/C | ON/OFF SWITCH |
| 34/D | CONTINUOUS WASHING CYCLE SWITCH |
| 35 | 12 POLES TERMINAL BOX |
| 36/A | OCTAL SOCLE |
| 36/B | 60" TIMER |
| 37/A | RELAY 25 A |
| 37/B | RELAY 32 A |
| 38 | CYCLE PROGRAMMER |
| 39 | PRESSURE SWITCH |
| 40 | DRAIN PUMP |
| 41/A | THERMOSTAT WITH FEELER |
| 41/C | THERMOSTAT WITH PELLET PROBE |
| 42 | SAFETY THERMOSTAT |
| 43/A | 80°C FIXED THERMOSTAT |
| 43/B | 60°C FIXED THERMOSTAT |
| 44/A | 100W TANK HEATING ELEMENT |
| 44/B | 1500 W HEATING ELEMENT |
| 44/C | OR FOR TANK HEATING ELEMENT |
| 45 | BOILER 230V 3 KW HEATING ELEMENT |
| | BOILER 400V 4KW THREEPHASE HEATING ELEMENT |
| | BOILER 400V 6KW THREEPHASE HEATING ELEMENT |
| | BOILER 400V 8KW THREEPHASE HEATING ELEMENT |
| 46/A | GREEN PILOT LIGHT |
| 46/B | RED PILOT LIGHT |
| 47 | DOOR MICROSWITCH |



| POSIZ. | DESCRIPTION |
|--------|--|
| 49/A | THREE POLES FUSE BOX |
| 49/B | 16A FUSE |
| 60/B | COMPLETE WASHING AND RINSING GROUP |
| 60/C | COMPLETE UPPER RINSING GROUP |
| 60/S | LEFT LOWER WASHING PIPE |
| 60/D | RIGHT LOWER WASHING PIPE |
| 61/S | LEFT LOWER RINSING PIPE |
| 61/D | RIGHT LOWER RINSING PIPE |
| 62/S | LEFT UPPER RINSING PIPE |
| 62/D | RIGHT UPPER RINSING PIPE |
| 63/S | LEFT UPPER WASHING PIPE |
| 63/D | RIGHT UPPER WASHING PIPE |
| 64/S | LEFT UPPER RINSING PIPE |
| 64/D | RIGHT UPPER RINSING PIPE |
| 65 | UPPER WASHING INLET PIPE |
| 66 | "DRAIN VENTURI CONNECTOR FOR P RANGE |
| 70/A | LOWER WASHING RINSING DISTRIBUTOR |
| 70/B | UPPER WASHING RINSING DISTRIBUTOR |
| 71 | WASHING GROUP OR |
| 72/A | SPLASH GUARD |
| 72/B | WASHING GROUP FIXING NUT |
| 73 | WASHING GROUP SEAL RING |
| 74/A | TWO WAYS PARALLEL WASHING RING |
| 74/B | UPPER RINSING RING |
| 75/A | WASHING NOZZLE |
| 75/B | FIXED UPPER WASHING NOZZLE |
| 76 | RINSING NOZZLE |
| 77/A | WASHING RING OMEGA |
| 77/B | RINSING RING OMEGA |
| 78 | M8 BRASS NICKEL WASHER |
| 79/A | UPPER RINSING TURRET |
| 79/B | OR 2018-(103) SIL |
| 79/C | WATER 3/4 GASKET |
| 80 | WASHING GROUP STAINLESS STEEL SHAFT |
| 81 | PRESSURE SWITCHES Y |
| 82/A | COMPLETE PUMP FILTER |
| 82/B | PUMP FILTER LOBE HAND-WHEEL |
| 82/C | TANK FILTER |
| 82/D | TANK HEATING ELEMENT COVER |
| 83 | DETERGENT INJECTOR |
| 84 | DOOR SPRING |
| 85/A | SUCTION DRAIN ELBOW |
| 85/B | DRAIN ELBOW GASKET |
| 85/C | DRAIN ELBOW NUT |
| 86 | FOOT |
| 87 | SPOON HOLDER |
| 88 | SAUCER HOLDER |
| 89/A | GLASS BASKET |
| 89/B | DISH BASKET |
| 90 | ANTI-POLLUTION DEVICE |
| 91 | CABLE FASTENER |
| 92 | COMPLETE AIR RETAINER |
| 93 | DOOR TIE-ROADS BLOCKS |
| 94 | HEATING ELEMENT CONNECTIONS PROTECTION |
| 95 | UPPER WASHING CONNECTOR |
| 96/A | WASHING PIPE CAP |
| 96/B | WASHING PIPE CAP OR |
| 96/C | RINSING PIPE CAP |
| 96/D | RINSING PIPE CAP OR |
| 97 | OPERFLOW |
| 99 | COMPLETE DOOR CLOSING |



Зип Общепит

vsezip.ru

+7(812)987-08-81

| POSIZ. | DESCRIPTION |
|--------|--|
| 1/A | CABINET COMPLET |
| 1/B | CHEMISE |
| 1/C | PANNEAU DE BORD |
| 1/D | BASEMENT |
| 2 | PANNEAU SOUS-PORTE |
| 3/A | PORTE |
| 3/B | CONTREPORTE |
| 3/C | POIGNEE |
| 4/A | PANNEAU POSTERIEUR |
| 4/B | FERMETURE PANNEAU POSTERIEUR |
| 4/D | PANNEAU LATÉRAL À DROITE |
| 4/S | PANNEAU LATÉRAL À GAUCHE |
| 5 | CHAUDIERE |
| 6 | CHARNIERE PORTE |
| 6/D | CHARNIERE DROITE COMPLETE |
| 6/S | CHARNIERE GAUCHE COMPLETE |
| 20 | TUYAU CHARGEMENT VANNE ANTI-POLLUTION |
| 21 | TUYAU CHARGEMENT EAU |
| 22/A | TUYAU RINÇAGE INFERIEUR |
| 22/B | TUYAU RINÇAGE SUPERIEUR |
| 23/A | TUYAU DE VIDANGE |
| 23/B | TUYAU POMPE DE VIDANGE |
| 24 | TUYAU RACCORDEMENT 3/4 LAVAGE SUPERIEUR |
| 25 | RACCORDEMENT Y LAVAGE SUPERIEUR |
| 26 | TUYAU INSPIRATION POMPE DE VIDANGE |
| 28 | COUDE TUYAU DE LAVAGE |
| 29 | COUDE ASPIRATION LAVAGE |
| 30/A | POMPE DE VIDANGE |
| 30/B | CONDENSATEUR POMPE LAVAGE |
| 32/B | DOSEUR PRODUIT DE RINÇAGE |
| 32/D | DOSEUR PRODUIT DE LAVAGE |
| 32/TB | TUYAU DE RECH. DOSEUR PRODUIT DE RINÇAGE |
| 32/TD | TUYAU DE RECH. DOSEUR PRODUIT DE LAVAGE |
| 33 | ELECTROVANNE |
| 34/A | BOUTON MISE EN MARCHÉ |
| 34/B | BOUTON DE VIDANGE |
| 34/C | INTERRUPTEUR MARCHÉ/ARRÉT |
| 34/D | INTERRUPTEUR LAVAGE CONTINU |
| 35 | BOITE A 12 POLES |
| 36/A | SOCLE OCTAL |
| 36/B | TIMER 60" |
| 37/A | TELERUPTEUR 25 A |
| 37/B | TELERUPTEUR 32 A |
| 38 | PROGRAMMATEUR CYCLE |
| 39 | PRESSOSTAT |
| 40 | POMPE DE VIDANGE |
| 41/A | THERMOSTAT AVEC SONDE |
| 41/C | THERMOSTAT AVEC TABLETTE |
| 42 | THERMOSTAT DE SECURITE |
| 43/A | THERMOSTAT FIXE 80° |
| 43/B | THERMOSTAT FIXE 60° |
| 44/A | RESISTANCE CUVE 100W |
| 44/B | RESISTANCE 1500W |
| 44/C | OR POUR RESISTANCE CUVE |
| 45 | RESISTANCE CHAUDIERE 230V 3KW RESISTANCE CHAUDIERE 400V 4KW 3PH RESISTANCE CHAUDIERE 400V 6KW 3PH RESISTANCE CHAUDIERE 400V 8KW 3PH |
| 46/A | LAMPE TEMOIN VERTE |
| 46/B | LAMPE TEMOIN ROUGE |
| 47 | MICROINTERRUPTEUR PORTE |



| POSIZ. | DESCRIPTION |
|--------|--|
| 49/A | PORTEFUSIBLE TRIPOLAIRE |
| 49/B | FUSIBLE 16 A |
| 60/B | GROUPE LAVAGE RINÇAGE COMPLETE |
| 60/C | GROUPE RINÇAGE SUPERIEUR COMPLETE |
| 60/S | TUYAU LAVAGE INFERIEUR GAUCHE |
| 60/D | TUYAU LAVAGE INFERIEUR DROIT |
| 61/S | TUYAU RINÇAGE INFERIEUR GAUCHE |
| 61/D | TUYAU RINÇAGE INFERIEUR DROIT |
| 62/S | TUYAU RINÇAGE SUPERIEUR GAUCHE |
| 62/D | TUYAU RINÇAGE SUPERIEUR DROIT |
| 63/S | TUYAU LAVAGE SUPERIEUR GAUCHE |
| 63/D | TUYAU LAVAGE SUPERIEUR DROIT |
| 64/S | TUYAU RINÇAGE SUPERIEUR GAUCHE |
| 64/D | TUYAU RINÇAGE SUPERIEUR DROIT |
| 65 | REFOULEMENT LAVAGE SUPERIEUR |
| 66 | "RACCORDEMENT VENTURI VIDANGE SERIE P |
| 70/A | DISTRIBUTEUR LAVAGE RINÇAGE INFERIEUR |
| 70/B | DISTRIBUTEUR LAVAGE RINÇAGE SUPERIEUR |
| 71 | OR POUR GROUPE LAVAGE |
| 72/A | BONNET GARDE-BOUE |
| 72/B | BAGUE DE FIXAGE GROUPE LAVAGE |
| 73 | ANEAU D'ETANCHETE GROUPE LAVAGE |
| 74/A | RONDELLE LAVAGE DEUX VOIES PARALLELE |
| 74/B | RONDELLE RINÇAGE SUPERIEUR |
| 75/A | GICLEUR LAVAGE |
| 75/B | GICLEUR LAVAGE SUPERIEUR FIXE |
| 76 | GICLEUR RINÇAGE |
| 77/A | OMEGA POUR RONDELLE LAVAGE |
| 77/B | OMEGA POUR RONDELLE RINÇAGE |
| 78 | RONDELLE EN LAITON NICKELÉ M 8 |
| 79/A | TOURELLE RINÇAGE SUPERIEUR |
| 79/B | OR 2018-(103) SIL |
| 79/C | JOINT 3/4 EAU |
| 80 | ARBRE INOX POUR GROUPE LAVAGE |
| 81 | Y PRESSOSTATS |
| 82/A | FILTRE POMPE COMPLET |
| 82/B | PETIT VOLANT A LOBES POUR FILTRE POMPE |
| 82/C | FILTRE CUVE |
| 82/D | COUVRE RESISTANCE CUVE |
| 83 | INJECTEUR PRODUIT DE LAVAGE |
| 84 | RESSORT PORTE |
| 85/A | COUDE INSPIRATION VIDANGE |
| 85/B | JOINT COUDE VIDANGE |
| 85/C | ECRU COUDE VIDANGE |
| 86 | PETIT PIED |
| 87 | GODET PORTE COUVERTS |
| 88 | GODET PORTE-SOUSCOUPES |
| 89/A | PANIER A VERRES |
| 89/B | PANIER A VAISSELLE |
| 90 | DISPOSITIF ANTIPOLLUTION |
| 91 | ARRRET-CABLE |
| 92 | CAGE D'AIR COMPLETE |
| 93 | BLOC POUR TIRANTS PORTE |
| 94 | PROTECTION BRANCHEMENT RESISTANCE |
| 95 | RACCORDEMENT POUR LAVAGE SUPERIEUR |
| 96/A | BOUCHON TUYAU LAVAGE |
| 96/B | OR POUR BOUCHON TUYAU LAVAGE |
| 96/C | BOUCHON TUYAU RINÇAGE |
| 96/D | OR POUR BOUCHON TUYAU RINÇAGE |
| 97 | TROP-PLEIN |
| 99 | FERMETURE PORTE COMPLETE |



| POSIZ. | BEZEICHNUNG |
|--------|--|
| 1/A | KOMPLETTER KASTEN |
| 1/B | VERDECK |
| 1/C | SCHALTAFEL |
| 1/D | UNTERBAU |
| 2 | UNTERTÜRWARD |
| 3/A | TÜR |
| 3/B | VORTÜR |
| 3/C | GRIFF |
| 4/A | RÜCKWAND |
| 4/B | HINTENTÜRWARDVERSCHLUß |
| 4/D | REGHTS SEITENWAND |
| 4/S | LINKS SEITENWAND |
| 5 | BOILER |
| 6 | SCHARNIER |
| 6/D | KOMPLETTES SCHARNIER RECHTS |
| 6/S | KOMPLETTES SCHARNIER LINKS |
| 20 | RÜCKSCHLAGVENTIL LADUNGSROHR |
| 21 | WASSER LADUNGSROHR |
| 22/A | HINTENNACHSPÜLENROHR |
| 22/B | OBENNACHSPÜLENROHR |
| 23/A | ABFLUßROHR |
| 23/B | ABFLUßPUMPESCHLAUCH |
| 24 | OBENWASCHVERBINDUNGSROHR 3/4 |
| 25 | OBENWASCHVERBINDUNG Y |
| 26 | ABFLUßPUMPE ABSAUGENROHR |
| 28 | SPÜLENUMDREHUNGSMUFFE |
| 29 | SPÜLENABSAUGENMUFFE |
| 30/A | WASHPUMPE |
| 30/B | KONDENSATOR FÜR WASHPUMPE |
| 32/B | KLARSPÜLMITTELDOSIERERGERÄT |
| 32/D | REINIGUNGSMITTELDOSIERERGERÄT |
| 32/TB | KLARSPÜLMITTELWIEDERAUFLADENSCHLAUCH |
| 32/TD | REINIGUNGSMITTELWIEDERAUFLADENSCHLAUCH |
| 33 | ELEKTROVENTIL |
| 34/A | STARTKNOPF |
| 34/B | ABFLUßKNOPF |
| 34/C | ON/OFF SCHALTER |
| 34/D | FORTGESETZTERSPÜLGANGSCHALTER |
| 35 | ZWÖLFPOLIGERKLEMMLEISTE |
| 36/A | OCTAL SOCKEL |
| 36/B | 60° SCHALTUHR |
| 37/A | FERNSCHALTER 25 A |
| 37/B | FERNSCHALTER 32 A |
| 38 | SPÜLGANGPROGRAMMIER |
| 39 | DRÜCKWÄCHTER |
| 40 | ABFLUßPUMPE |
| 41/A | THERMOSTAT MIT FÜHLER |
| 41/C | THERMOSTAT MIT BELAG |
| 42 | SICHEREITSTHERMOSTAT |
| 43/A | 80° FESTTHERMOSTAT |
| 43/B | 60° FESTTHERMOSTAT |
| 44/A | BECKENWIDERSTAND 100W |
| 44/B | WIDERSTAND 1500W |
| 44/C | OR FÜR DEN BECKENWIDERSTAND |
| 45 | 230V 3 KW BOILER WIDERSTAND 400V 4KW DREIPHÄSIGER BOILER WIDERSTAND 400V 6KW DREIPHÄSIGER BOILER WIDERSTAND 400V 8KW DREIPHÄSIGER BOILER WIDERSTAND |
| 46/A | GRÜNE KONTROLLAMPE |
| 46/B | ROTE KONTROLLAMPE |
| 47 | TÜRMIKROSCHALTER |



| POSIZ. | BEZEICHNUNG |
|--------|---|
| 49/A | DREIPOLIGER SCHMELTZSICHERUNGSOCKEL |
| 49/B | 16A SCHMELZSICHERUNG |
| 60/B | KOMPLETE WASCH-NÄCHSPÜLGRUPPE |
| 60/C | KOMPLETE OBERER NÄCHSPÜLGRUPPE |
| 60/S | UNTERER, LINKER WASCHSCHLAUCH |
| 60/D | UNTERER, RECHTER WASCHSCHLAUCH |
| 61/S | UNTERER, LINKER NACHSPÜLENSCHLAUCH |
| 61/D | UNTERER, RECHTER NACHSPÜLENSCHLAUCH |
| 62/S | OBERER, LINKER NACHSPÜLENSCHLAUCH |
| 62/D | OBERER, RECHTER NACHSPÜLENSCHLAUCH |
| 63/S | OBERER, LINKER WASCHSCHLAUCH |
| 63/D | OBERER, RECHTER WASCHSCHLAUCH |
| 64/S | OBERER, LINKER NACHSPÜLENSCHLAUCH |
| 64/D | OBERER, RECHTER NACHSPÜLENSCHLAUCH |
| 65 | OBERER UMDREHUNG WASCHSCHLAUCH |
| 66 | VENTURI ABFLUßVERBINDUNG FÜR SERIE P |
| 70/A | UNTERER WASCHEN- UND NACHSPÜLENSPENDER |
| 70/B | OBERER WASCHEN- UND NACHSPÜLENSPENDER |
| 71 | OR FÜR WASCHGRUPPE |
| 72/A | SPRITZSCHUTZHAUBE |
| 72/B | WASCHGRUPPEBEFESTIGUNGSSWINGE |
| 73 | WASCHGRUPPEDICHTUNGSRING |
| 74/A | ZWEI WEGE PARALLEL WASCHGRUPPE |
| 74/B | OBERER NACHSPÜL |
| 75/A | WASCHENDÜSE |
| 75/B | OBERE FESTWASCHENDÜSE |
| 76 | NACHSPÜLENDÜSE |
| 77/A | OMEGA FÜR WASCHEN |
| 77/B | OMEGA FÜR NACHSPÜLEN |
| 78 | UNTERLESSCHEIBE AUS VERWICKELTEM MESSING M8 |
| 79/A | OBENNACHSPÜLENDREHKOPF |
| 79/B | OR 2018-(103) SIL |
| 79/C | WASSERDICHTUNG "3/4" |
| 80 | EDELSTAHLWELLE FÜR WASCHGRUPPE |
| 81 | DRÜCKWÄCHTER Y |
| 82/A | KOMPLETTER PUMPEFILTER |
| 82/B | PAßHANDRAD FÜR PUMPEFILTER |
| 82/C | BECKENFILTER |
| 82/D | BECKENHEIZUNGSSCHUTZ |
| 83 | REINIGUNGSMITTELSDÜSE |
| 84 | TÜRSPRUNG |
| 85/A | ABSAUGEN-/ABFLUßKNEIE |
| 85/B | ABFLUßKNEIEDICHTUNG |
| 85/C | ABFLUßKNEIEMUTTER (KNOPFZELLE) |
| 86 | FUß |
| 87 | TEELÖFFELSCHALE |
| 88 | UNTERTASSENSCHALE |
| 89/A | TELLERKORB |
| 89/B | GLÄSERKORB |
| 90 | RÜCKSCHLAG VENTIL |
| 91 | KABELBEFESTIGENDER |
| 92 | KOMPLETTE LUFTFÄDIG |
| 93 | BLOCK FÜR TÜRZUGSTANGE |
| 94 | WIDERSTANDSCHALTUNGSSCHUTZ |
| 95 | OBENWASCHVERBINDUNG |
| 96/A | WASCHSCHLAUCHSTÖPSEL |
| 96/B | OR FÜR WASCHSCHLAUCHSTÖPSEL |
| 96/C | NACHSPÜLSCHLAUCHSTÖPSEL |
| 96/D | OR FÜR NACHSPÜLSCHLAUCHSTÖPSEL |
| 97 | ÜRBERLAUF |
| 99 | KOMPLETTER TÜRVERSCHLUß |