

Зип Общепит

vsezip.ru

+7(812)987-08-81



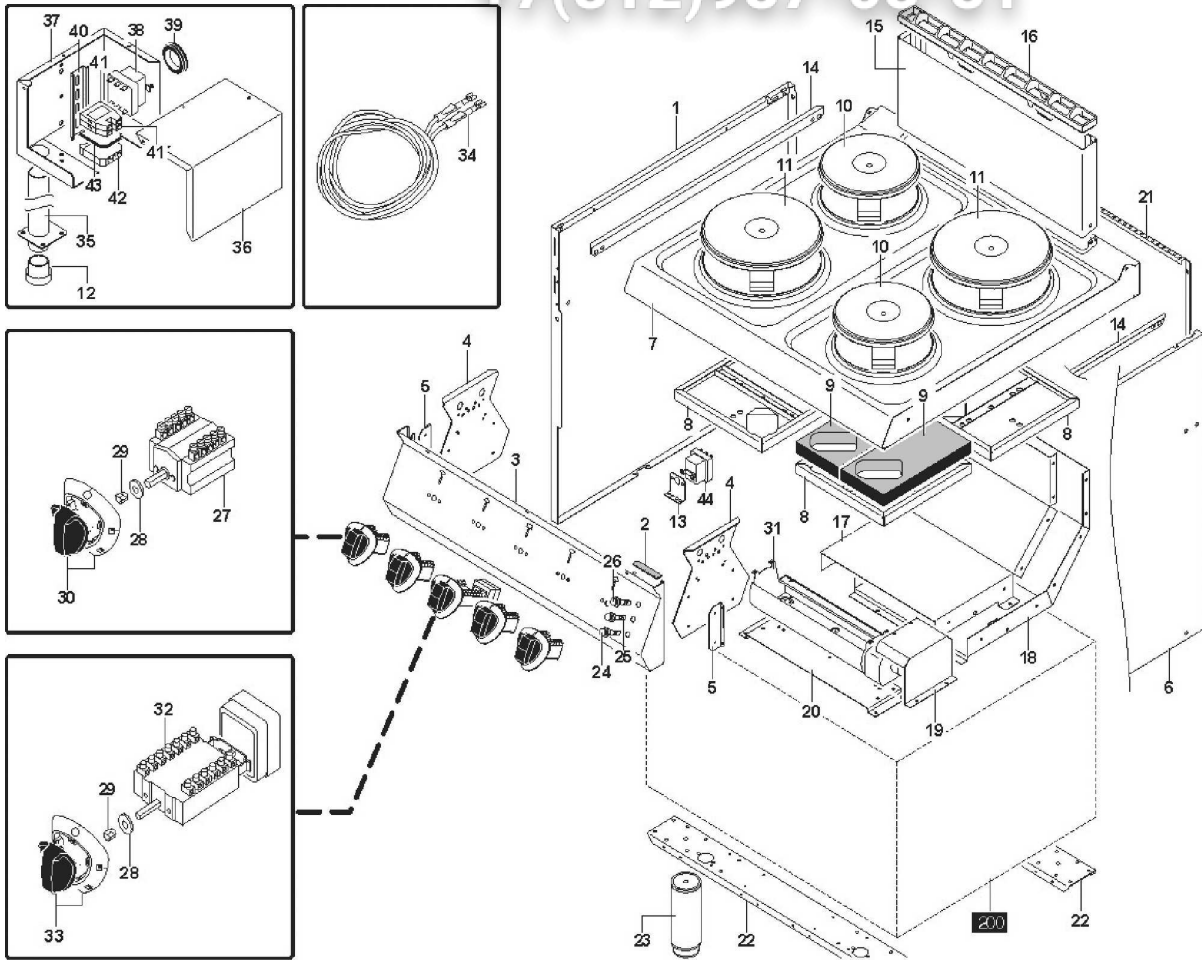
1G1PE1EV

Edition 20120630-

Зип Общепит

vsezip.ru

+7(812)987-08-81

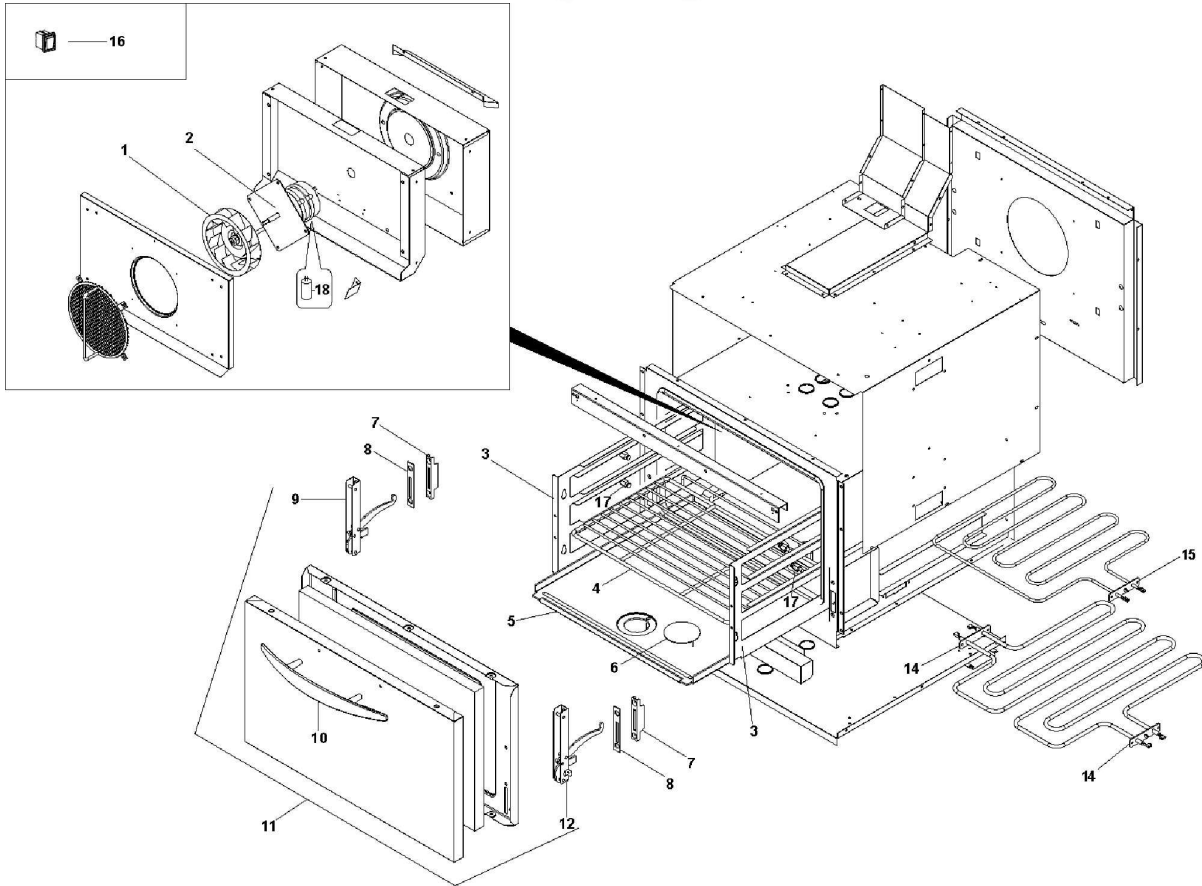


10M- 592-03303

Зип Общепит

vsezip.ru

+7(812)987-08-81



| Page | Pos | Code | Description | Info |
|------|-----|---------|---|-------------|
| 002 | 001 | 35H2290 | LH PANEL | 01/06/2002- |
| 002 | 002 | 137AA04 | GASKET | 01/06/2002- |
| 002 | 003 | 30A5671 | UPPER CONTROL BOARD | 01/06/2002- |
| 002 | 004 | 35E5791 | PARA-SPRINKLES BOARD | 10/03/2006- |
| 002 | 005 | 35P4600 | "SUPPORT ""L"" | 01/06/2002- |
| 002 | 006 | 35H2280 | RH PANEL | 01/06/2002- |
| 002 | 007 | 3000401 | TOP EL. ASS. Y | 01/06/2002- |
| 002 | 008 | 30Q2960 | EL. PLATE PROTECTION | 01/06/2002- |
| 002 | 009 | 37Q4940 | INSULANTING PANEL | 01/06/2002- |
| 002 | 010 | 32G0030 | ELECTRIC PLATE Ø180 - 2000W - 220V/230V | 01/06/2002- |
| 002 | 010 | 32G0290 | ELECTRIC PLATE Ø180 - 2000W - 400V | 01/06/2002- |
| 002 | 010 | 32G1320 | ELECTRIC PLATE Ø180 - 2000W - 415V | 01/06/2002- |
| 002 | 011 | 32G0020 | ELECTRIC PLATE Ø220 - 2600W - 220V/230V | 01/06/2002- |
| 002 | 011 | 32G0300 | ELECTRIC PLATE Ø220 - 2600W - 400V | 01/06/2002- |
| 002 | 011 | 32G1330 | ELECTRIC PLATE Ø220 - 2600W - 415V | 01/06/2002- |
| 002 | 012 | 3036530 | BUSHING | 08/06/2006- |
| 002 | 013 | 35S6361 | L" SHAPED BAR | 01/06/2002- |
| 002 | 014 | 35Y4510 | L BRACKET | 01/06/2002- |
| 002 | 015 | 30Q1780 | EXT FLUE ASS. Y | 01/06/2002- |
| 002 | 016 | 36C4810 | FLUE GUARD | 01/06/2002- |
| 002 | 017 | 3000430 | AIR CONVEYOR | 01/06/2002- |
| 002 | 018 | 3000440 | AIR CONVEYOR | 01/06/2002- |
| 002 | 019 | 3001560 | MOTOR PROTEC. PLATE | 01/06/2002- |
| 002 | 020 | 3000450 | FAN SUPPORT | 01/06/2002- |
| 002 | 021 | 35E1900 | REAR PANEL 700 | 01/06/2002- |
| 002 | 022 | 35U8050 | SECTION 692X75X30 | 01/06/2002- |
| 002 | 023 | 36C5360 | 4 FOOTS ASS.Y | 01/06/2002- |
| 002 | 024 | 3106710 | GREEN LIGHT 230V | 23/05/2007- |
| 002 | 025 | 6300651 | ORANGE LIGHT 400V ASS.Y | 23/05/2007- |
| 002 | 026 | 3106720 | RED LIGHT 230V | 23/05/2007- |
| 002 | 027 | 32W0760 | SWITCH | 01/06/2002- |
| 002 | 028 | 3152240 | THERMOSTAT PROTECT. | 01/06/2002- |
| 002 | 029 | 3170290 | KNOB SPRING | 01/06/2002- |
| 002 | 030 | 3135860 | ELECT. CONTROL KNOB | 01/03/2008- |
| 002 | 031 | 3001330 | TANGENTIAL FAN | 01/06/2002- |
| 002 | 032 | 3223551 | THERMOSTAT 50-300° C | 01/06/2002- |
| 002 | 033 | 3135470 | KNOB Ø6 | 01/03/2008- |
| 002 | 034 | 32Q6330 | CABLE GROUP | 01/06/2002- |
| 002 | 035 | 30Z3561 | EL. CABLES PIPE | 04/05/2005- |
| 002 | 036 | 35Z7490 | EL. BOX PROTECTION | 01/06/2002- |
| 002 | 037 | 35Z7620 | TERM. BLOCK SUPPORT | 01/06/2002- |
| 002 | 038 | 32Z9202 | SAFETY THERMOSTAT | 10/11/2004- |
| 002 | 039 | 32X0130 | GROMMET Ø29-Ø37 | 01/06/2002- |
| 002 | 040 | 35S5420 | ""OMEGA"" BRACKET" | 01/06/2002- |
| 002 | 041 | 32D0950 | LIVE TERMINAL | 01/06/2002- |
| 002 | 042 | 32D0970 | GROUND TERMINAL | 01/06/2002- |
| 002 | 043 | 32D1280 | SCREEN COLOR | 01/06/2002- |
| 002 | 044 | 3001550 | ELECTRIC THERMOSTAT | 01/06/2002- |
| 002 | 200 | M010990 | M. AIRY ELECTRIC | 01/06/2002- |
| 003 | 001 | 32M0370 | FAN | 01/06/2002- |
| 003 | 002 | 32M4301 | MOTOR | 01/06/2002- |

| Page | Pos | Code | Description | Info |
|------|-----|---------|----------------------------|-------------|
| 003 | 003 | 35Y2820 | TRAY RACK ASS. Y | 01/06/2002- |
| 003 | 004 | 3012000 | OVEN GRID 530X325X35 | 01/06/2002- |
| 003 | 005 | 35D4340 | OVEN BOTTOM PLATE | 01/06/2002- |
| 003 | 006 | 30D1260 | OVEN PLATE HOLE COVER | 01/06/2002- |
| 003 | 007 | 36M0270 | HINGE CATCH | 01/06/2002- |
| 003 | 008 | 35U3170 | FLAT BRACKET | 01/06/2002- |
| 003 | 009 | 36M2430 | LEFT HAND HINGE | 01/06/2002- |
| 003 | 012 | 36M2420 | RIGHT-HAND HINGE | 01/06/2002- |
| 003 | 014 | 32G1591 | HEATING EL. | 01/06/2002- |
| 003 | 014 | 32G1621 | HEATING ELEMENT 2600W 400V | 01/06/2002- |
| 003 | 015 | 3003790 | HEATING EL. 2700W. 230V | 01/06/2002- |
| 003 | 015 | 32G3250 | HEATING EL. | 01/06/2002- |
| 003 | 016 | 32W0631 | SWITCH | 01/06/2002- |
| 003 | 017 | 36C3011 | PIN CH14 | 01/06/2002- |
| 003 | 018 | 32Z6660 | CAPACITOR 2MF 450V | 01/06/2002- |